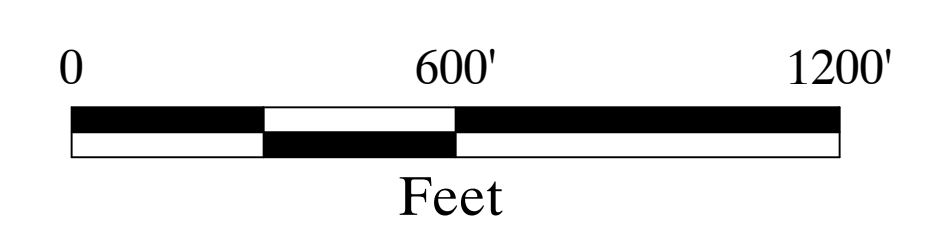
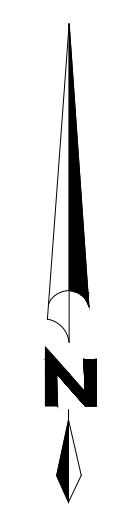
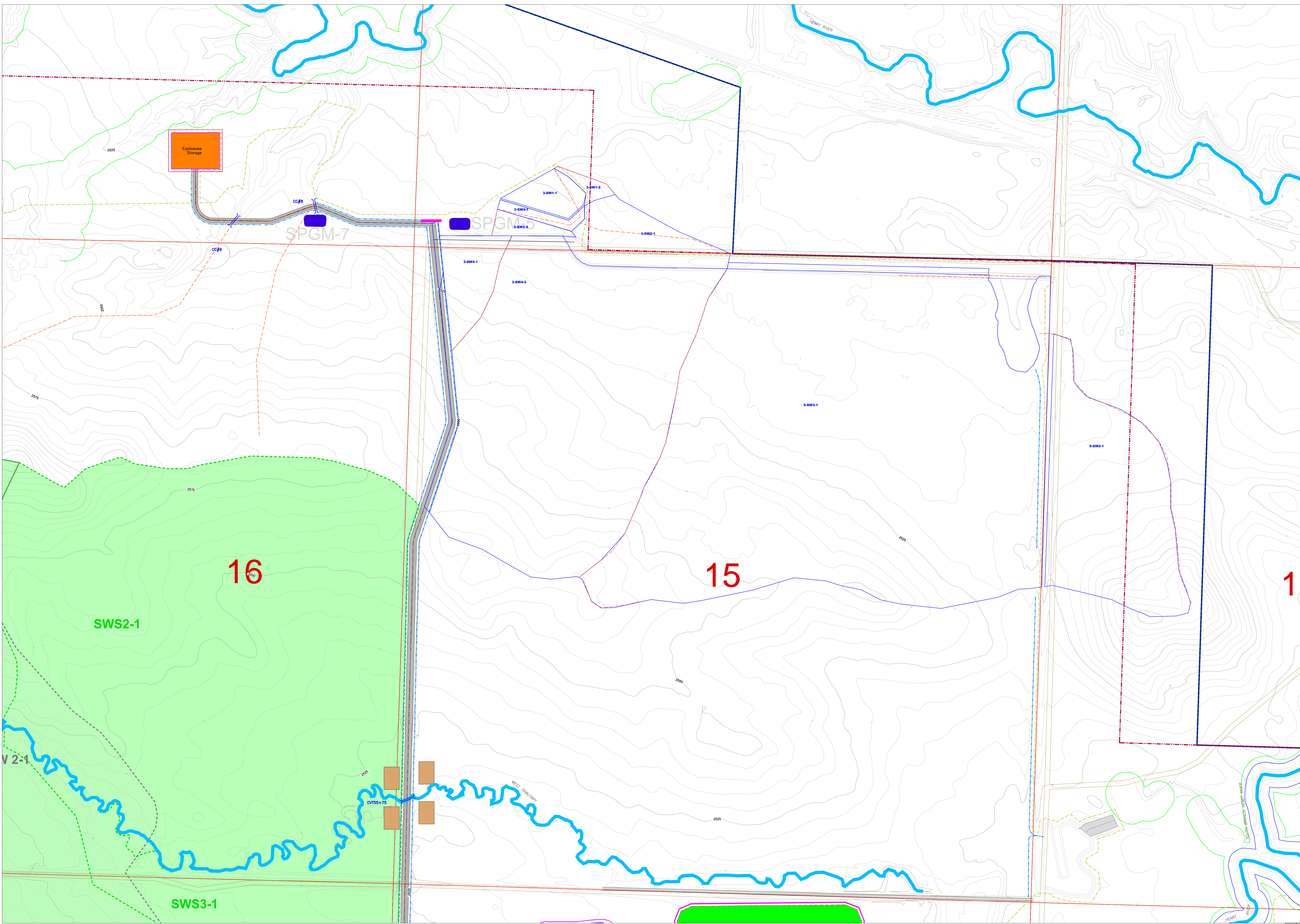


LEGEND

- SEDIMENT POND
- STUDY AREA
- PERMIT BOUNDARY
- DIVERSION
- MINE DITCH
- DISTURBANCE BOUNDARY
- WATERSHED BOUNDARY
- SUB-WATERSHED BOUNDARY FOR CVT 70+51
- SUB-WATERSHED BOUNDARY FOR CVT 55+75
- TIME OF CONCENTRATION
- STREAM CHANNEL
- WETLAND BUFFER
- SPGM STOCKPILE
- OVB STOCKPILE
- SOVB STOCKPILE
- SMALL AREA EXEMPTION BERM
- CULVERT
- HAUL ROAD
- ACCESS ROAD
- ROAD
- STRAW WATTLE BMP
- FACILITY AREA
- SECTION 23
- TOPOGRAPHY (5 FT. INTERVALS)



REFERENCE
T139N R98W
Permit Boundary: IEI, 11/12/2009.
Mine Pit Boundary: Norwest, 01/20/2010.
Township, Range and Section: ND HUB, 6/20/2006.
Drainage Ways: Digitized from aerial photography, 6/19/2007.
Contours: Generated from aerial photography stereo pairs, 6/19/2007.
Projection: StatePlane, North Dakota South, NAD27, Feet.
Contours are set at 5' intervals, unless otherwise specified.

REV	DATE	DES	COMPLETENESS	COMMENT	JLS	CWB	JRH
REV	DATE	DES	REVISION DESCRIPTION	CADD	CHK	REV	

PROJECT: SOUTH HEART COAL LLC
SOUTH HEART LIGNITE MINE
SOUTH HEART, NORTH DAKOTA

TITLE: PERMIT TERM WATER MANAGEMENT PLAN
SHEET 1 OF 2

NORWEST CORPORATION	PROJECT No.	23-428403	FILE No.	Permit & Discharge
	DESIGN	APO 2/15/10	SCALE	AS SHOWN
	CADD	JLS 2/15/10	REVISION	1
	CHECK	JRH 2/15/10	Figure 3.6-2	
	REVIEW	JRH 2/15/10		