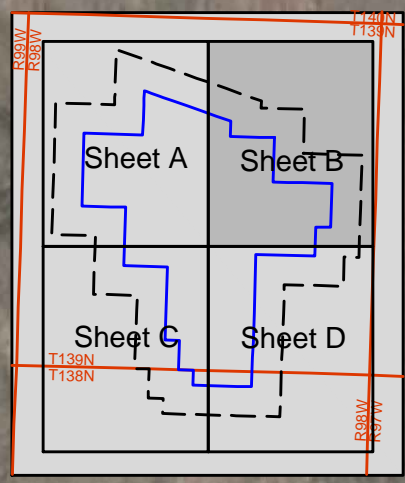


SHEET A
SHEET B



T139N
R96W

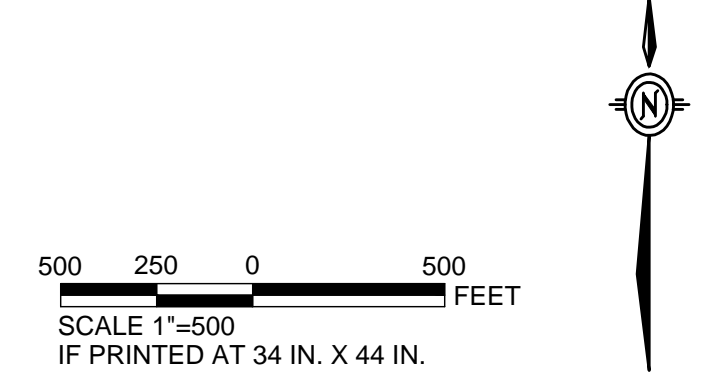


SHEET B
SHEET D

REFERENCES
 Study Area: Golder, 10/18/2007.
 Permit Boundary: IEI, 11/10/2009.
 PLSS: ND HUB, 6/20/2006.
 Aerials: Golder 06/19/2006 & Stark Co. NAIP 2004
 Projection: StatePlane, North Dakota South, NAD27, Feet.

HABITAT LEGEND		HABITAT LEGEND	
MAP UNIT	TYPE	MAP UNIT	TYPE
001	Rock Outcrop	310	Mesic Shrub Drainage
002	Stream/Pond/Impoundment	410	Native Grassland
021	Rural Building Site	413	Riparian Grassland
022	Shelterbelt	510	Alfalfa (hayed)
023	Road/ROW/Utilities	520	Crop
110	Deciduous Streambank	530	Tame Pasture/CRP
222	Silver Sagebrush		

LEGEND	
	Primary Study Area
	Secondary Study Area
	Permit Boundary
	Wildlife Habitat Boundary
	Section



SOUTH HEART COAL LLC SOUTH HEART LIGHTS MINE STARK COUNTY, NORTH DAKOTA	
FISH & WILDLIFE HABITAT MAP SHEET 2 OF 4	
PROJECT: 10/18/2007 DRAWN: 11/10/2009 CHECKED: 11/10/2009 DATE: 11/10/2009	FILE: EX-241.DWG SCALE: 1"=500' SHEET: 2 OF 4 EXHIBIT: 2.9-1B