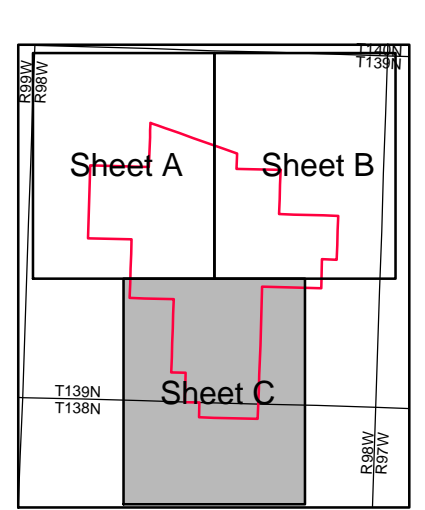


SHEET A
SHEET C

SHEET B
SHEET C



R98W

T139N
T138N

VEGETATION TYPE LEGEND

SERIES	MAP UNIT	TYPE
100	SL-WL-Sb	Saline Lowland-Wet Land- Subirrigated (see 501)
	LyOv-Sp-WL	Loamy Overflow-Subirrigated-Wet Land (see 502)
	WL-WM	Wet Land-Wet Meadow (see 502)
	SwCy	Shallow Clayey
	SwLy	Shallow Loamy
	SwSy	Shallow Sandy
	Cp	Claypan
	Tcp	Thin Claypan
	Sy	Sandy
	Cy	Clayey
	Ly	Loamy
	LyOv	Loamy Overflow
	LyT	Loamy Terrace
LyT (occ. CyT)	Loamy Terrace (occasionally Clayey Terrace)	
200		TAME PASTURELAND
201	Tame Pasture	
300		WOODLAND
	301	Riparian Woodland
	302	Deciduous Tree Woodland
	303	Tall Shrub Woodland
304	Low Shrub Woodland	
400		SHELTERBELTS
401	Shelterbelt	
500		WETLANDS
	501	Saline Lowland (herbaceous)
	502	Herbaceous Wetland
	503	Scrub-Shrub Wetland
504	Forested Wetland	
600		CROPLAND
	611	Cultivated (annual crops)
	612	Grassed Waterway
	621	Mixed Hay
	622	Grass Hay
623	Alfalfa Hay	
631	CRP (Conservation Reserve Program)	
700		MISCELLANEOUS/DISTURBED
	701	Farm Yard/Residential
	702	Road/ROW
	703	Industrial
	704	Historic Mine
	706	Developed Water Resources

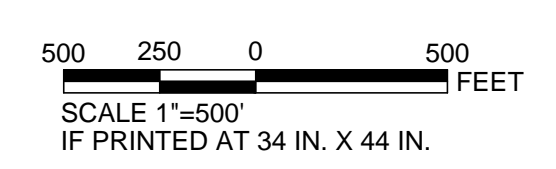
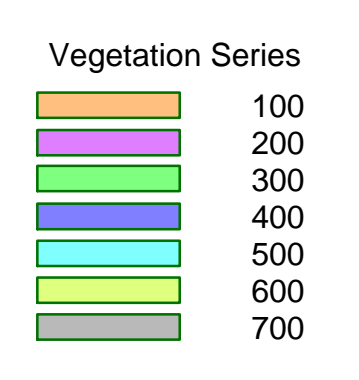
SOILS LEGEND

AD-AB = Arnegard clay loam	LR-B = Lawther silty clay
AR-AB = Amor loam	MG-AB = Manning sandy loam
AR-CD = Amor loam	MNA = Morton loam
CB-AB = Cabba silt loam	MN-BC = Morton loam
CB-C = Cabba silt loam	MU-A = Moreau silty clay loam
CB-DE = Cabba loam	MU-B = Moreau silty clay loam
CHAN = River Channels	PL-BC = Parshall sandy loam
DH-A = Dogtooth silty clay loam	PL-DEF = Parshall sandy loam
DH-B = Dogtooth silty clay loam	RR-B = Reeder loam
DM-AB = Daglum silty clay loam	RS-A = Rhoades silty clay
EHA = Etric Haplustolls-silt loams and silty clay loams	RS-B = Rhoades silty clay
EHA s/s = Etric Haplustolls (s/s)	RT-AB = Regent silty clay loam
FR-BC = Flasher sandy loam	RT-CD = Regent silty clay loam
FR-DE = Flasher sandy loam	SE-A = Savage silty clay loam
FV-A = Fluvents-silt loams and silty clay loams	SE-B = Savage silty clay loam
FV-A s/s = Fluvents (s/s)	SN-AB = Sen silt loam
GL-A = Grail silty clay loam	SO-A s/s = Shambo loam (s/s)
HL-A = Havrelon silt loam	SO-ABC = Shambo loam
HL-A s/s = Havrelon (s/s)	TY-ABC = Tally sandy loam
HL-A ch = Havrelon (ch)	VR-ABC = Vebur loam
JG-AB = Janesburg silty clay	Wet Saline = Saline silty clay loam
LE-A = Lattie silty clay	WN-A = Wayden silty clay
LR-A = Lawther silty clay	WN-B = Wayden silty clay
	WN-CDE = Wayden silty clay

Modifiers: A,B,C,D,E,F = slope classes
ch = channelled
s/s = saline sodic substratum

LEGEND

- Study Area
- Permit Boundary
- Vegetation Type Boundary
- Vegetation Sample Site
- Soil Type Boundary
- Ecological Site Boundary (100)
- Township and Range
- Section



REFERENCES
Study Area: Golder, 10/18/2007.
Permit Boundary: IEI, 11/12/2009.
Soils: Catena, 11/06/2007.
Township, Range and Section: ND HUB, 6/20/2006.
Projection: StatePlane, North Dakota South, NAD27, Feet.

WESTECH Environmental Consulting

SOUTH HEART COAL LLC
SOUTH HEART LIGHT MINE
STARK COUNTY, NORTH DAKOTA

VEGETATION MAP
SHEET 3 OF 3

DATE: 11/12/2009
SCALE: 1"=500'
IF PRINTED AT 34 IN. X 44 IN.

Ex 27.2-1C