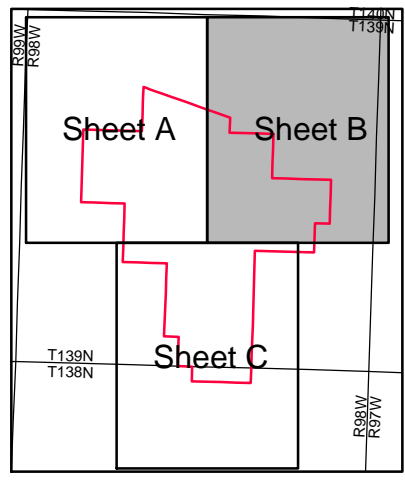


SHEET A
SHEET B



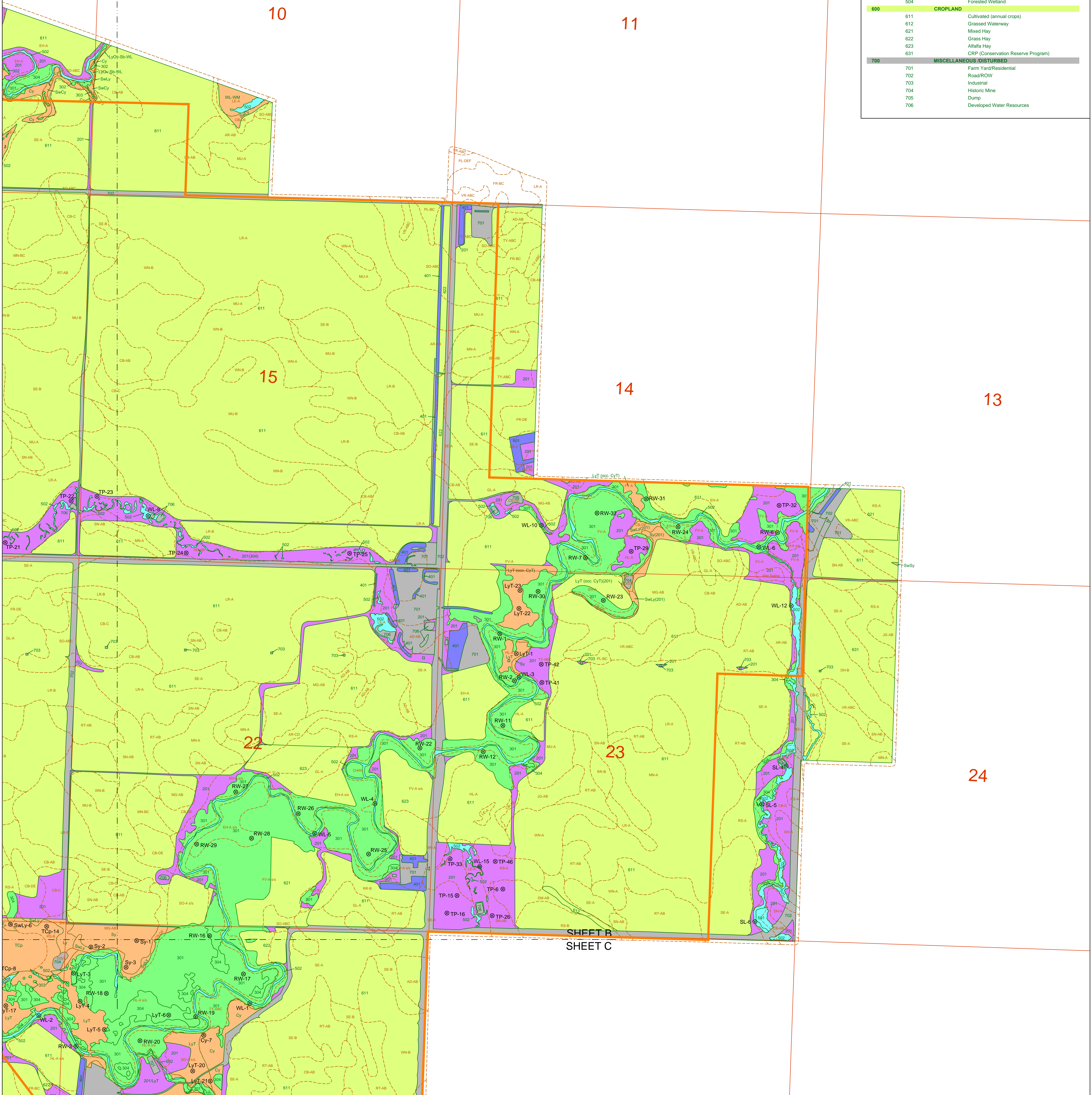
SOILS LEGEND

AD-AB = Argand clay loam	LR-B = Lawther silty clay
AR-AB = Amer loam	MG-AB = Manning sandy loam
AR-CD = Amor loam	MN-A = Morton loam
CB-AB = Cabba silt loam	MN-BC = Morton loam
CB-C = Cabba silt loam	MU-B = Moreau silty clay loam
CB-DE = Cabba loam	MU-BC = Moreau silty clay loam
CHAN = River Channels	PL-BC = Parshall sandy loam
DH-A = Dogtooth silty clay loam	PL-DEF = Parshall sandy loam
DH-B = Dogtooth silty clay loam	RR-B = Reeder loam
DM-AB = Dajlum silty clay loam	RS-A = Rhoades silty clay
EHA = Entic Haplustolls-silt loams and silty clay loams	RS-B = Rhoades silty clay
EHA s/s = Entic Haplustolls (s/s)	RT-AB = Regent silty clay loam
FR-BC = Flasher sandy loam	RT-CD = Regent silty clay loam
FR-DE = Flasher sandy loam	SE-A = Savage silty clay loam
FVA = Fluvents-silt loams and silty clay loams	SE-B = Savage silty clay loam
FVA s/s = Fluvents (s/s)	SN-AB = Sen silt loam
GL-A = Grail silty clay loam	SO-A s/s = Shambo loam (s/s)
HL-A = Havrelon silt loam	SO-ABC = Shambo loam
HL-A s/s = Havrelon (s/s)	TY-ABC = Tally sandy loam
HL-A ch = Havrelon (ch)	VR-ABC = Vebar loam
JG-AB = Janesburg silty clay	WN-A = Wayden silty clay
LE-A = Lallie silty clay	WN-B = Wayden silty clay
LRA = Lawther silty clay	WN-CDE = Wayden silty clay

Modifiers: A,B,C,D,E,F = slope classes
ch = channelled
s/s = saline sodic substratum

VEGETATION TYPE LEGEND

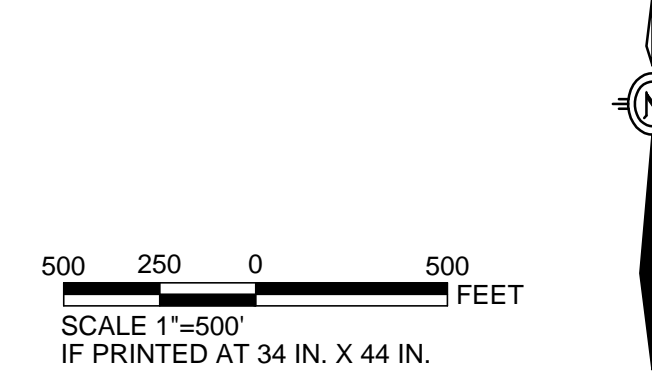
SERIES	MAP UNIT	TYPE
100	NATIVE GRASSLAND ECOLOGICAL SITES	
	SL-WL-Sb	Saline Lowland-Wet Land- Subirrigated (see 501)
	LyOv-Sb-WL	Loamy Overflow-Subirrigated-Wet Land (see 502)
	WL-WM	Wet Land-Wet Meadow (see 502)
	SwCy	Shallow Clayey
	SwLy	Shallow Loamy
	SwSy	Shallow Sandy
	Cp	Claypan
	Tcp	Thin Claypan
	Sy	Sandy
200	TAME PASTURELAND	
	Cy	Clayey
	Ly	Loamy
	LyOv	Loamy Overflow
300	WOODLAND	
	LyT	Loamy Terrace (occasionally Clayey Terrace)
400	SHELTERBELTS	
	401	Shelterbelt
	WETLANDS	
	501	Saline Lowland (herbaceous)
502	Herbaceous Wetland	
503	Scrub-Shrub Wetland	
504	Forested Wetland	
600	CROPLAND	
	611	Cultivated (annual crops)
	612	Grassed Waterway
	621	Mixed Hay
	622	Grass Hay
	623	Alfalfa Hay
631	CRP (Conservation Reserve Program)	
700	MISCELLANEOUS/DISTURBED	
	701	Farm Yard/Residential
	702	Road/ROW
	703	Industrial
	704	Historic Mine
	705	Dump
706	Developed Water Resources	



REFERENCES
 Study Area: Golder, 10/18/2007.
 Permit Boundary: IEI, 11/12/2009.
 Soils: Catena, 11/06/2007.
 Township, Range and Section: ND HUB, 6/20/2006.
 Projection: StatePlane, North Dakota South, NAD27, Feet.

LEGEND

	Study Area		Vegetation Series
	Permit Boundary		100
	Vegetation Type Boundary		200
	Vegetation Sample Site		300
	Soil Type Boundary		400
	Ecological Site Boundary (100)		500
	Township and Range		600
	Section		700



WESTECH Environmental Consulting

SOUTH HEART COAL LLC
 SOUTH HEART LIGHT MINE
 STARK COUNTY, NORTH DAKOTA

VEGETATION MAP
 SHEET 2 OF 3

DATE: 11/12/2009
 DRAWN BY: [Name]
 CHECKED BY: [Name]
 PROJECT NO: [Number]

WESTECH
 Environmental Consulting
 Ex 2.7.2-1B