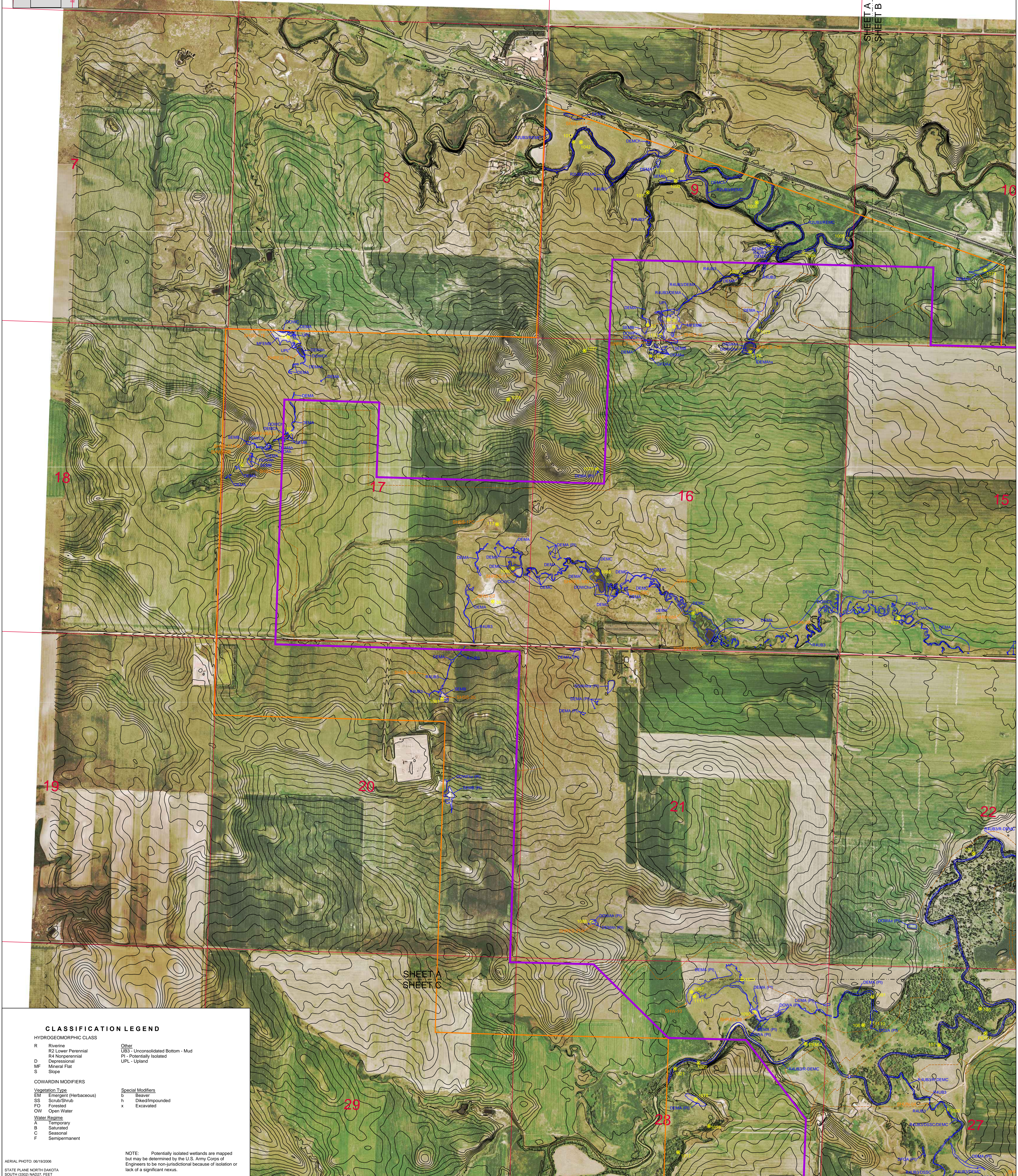


SHEET A
SHEET B



CLASSIFICATION LEGEND

HYDROGEOMORPHIC CLASS	
R	Riverine
R2	Lower Perennial
R4	Nonperennial
D	Depressional
MF	Mineral Flat
S	Slope
COWARDIN MODIFIERS	
Vegetation Type	
EM	Emergent (Herbaceous)
SS	Scrub/Shrub
FO	Forested
OW	Open Water
Water Regime	
A	Temporary
B	Saturated
C	Seasonal
F	Semipermanent
Special Modifiers	
b	Beaver
h	Diked/Impounded
x	Excavated
Other	UB3 - Unconsolidated Bottom - Mud
PI	Potentially Isolated
UPL	Upland

NOTE: Potentially isolated wetlands are mapped but may be determined by the U.S. Army Corps of Engineers to be non-jurisdictional because of isolation or lack of a significant nexus.

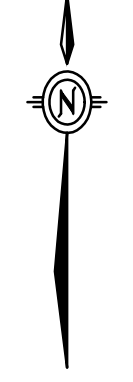
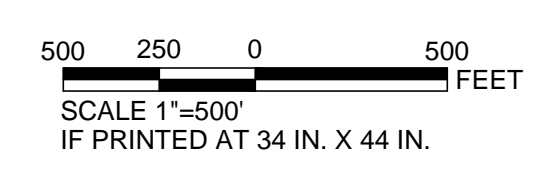
AERIAL PHOTO: 06/19/2006
STATE PLANE NORTH DAKOTA
SOUTH (3300) NAD27, FEET

REFERENCES

Study Area: Golder, 10/18/2007.
Permit Boundary: IEI, 11/12/2009.
Disturbance Boundary: Norwest, 9/16/2010.
Township, Range and Section: ND HUB, 6/20/2006.
Projection: StatePlane, North Dakota South, NAD27, Feet.

LEGEND

- Study Area
- Permit Boundary
- Disturbance Boundary
- Wetland plot
- SHSS-17 Water Quality Sampling Location (approximate)
- Wetland Boundary
- Township and Range
- Section
- Index Contour - 5 ft Interval
- Contour - 20 ft Interval



DATE	REVISIONS	BY	APP'D
06/19/2006			
06/19/2006	1	WESTECH	WESTECH
06/19/2006	2	WESTECH	WESTECH
06/19/2006	3	WESTECH	WESTECH
06/19/2006	4	WESTECH	WESTECH
06/19/2006	5	WESTECH	WESTECH
06/19/2006	6	WESTECH	WESTECH
06/19/2006	7	WESTECH	WESTECH
06/19/2006	8	WESTECH	WESTECH
06/19/2006	9	WESTECH	WESTECH
06/19/2006	10	WESTECH	WESTECH
06/19/2006	11	WESTECH	WESTECH
06/19/2006	12	WESTECH	WESTECH
06/19/2006	13	WESTECH	WESTECH
06/19/2006	14	WESTECH	WESTECH
06/19/2006	15	WESTECH	WESTECH
06/19/2006	16	WESTECH	WESTECH
06/19/2006	17	WESTECH	WESTECH
06/19/2006	18	WESTECH	WESTECH
06/19/2006	19	WESTECH	WESTECH
06/19/2006	20	WESTECH	WESTECH
06/19/2006	21	WESTECH	WESTECH
06/19/2006	22	WESTECH	WESTECH
06/19/2006	23	WESTECH	WESTECH
06/19/2006	24	WESTECH	WESTECH
06/19/2006	25	WESTECH	WESTECH
06/19/2006	26	WESTECH	WESTECH
06/19/2006	27	WESTECH	WESTECH
06/19/2006	28	WESTECH	WESTECH
06/19/2006	29	WESTECH	WESTECH
06/19/2006	30	WESTECH	WESTECH
06/19/2006	31	WESTECH	WESTECH
06/19/2006	32	WESTECH	WESTECH
06/19/2006	33	WESTECH	WESTECH
06/19/2006	34	WESTECH	WESTECH
06/19/2006	35	WESTECH	WESTECH
06/19/2006	36	WESTECH	WESTECH
06/19/2006	37	WESTECH	WESTECH
06/19/2006	38	WESTECH	WESTECH
06/19/2006	39	WESTECH	WESTECH
06/19/2006	40	WESTECH	WESTECH
06/19/2006	41	WESTECH	WESTECH
06/19/2006	42	WESTECH	WESTECH
06/19/2006	43	WESTECH	WESTECH
06/19/2006	44	WESTECH	WESTECH
06/19/2006	45	WESTECH	WESTECH
06/19/2006	46	WESTECH	WESTECH
06/19/2006	47	WESTECH	WESTECH
06/19/2006	48	WESTECH	WESTECH
06/19/2006	49	WESTECH	WESTECH
06/19/2006	50	WESTECH	WESTECH

PROJECT: SOUTH HEART COAL LLC
SOUTH HEART LIGHTS MINE
STARK COUNTY, NORTH DAKOTA

WESTECH Environmental Services

WETLAND MAP
SHEET 1 OF 3

EXHIBIT 1A