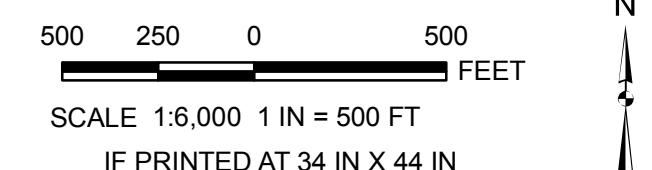


- LEGEND**
- Baseline Seep or Spring
 - ▲ Baseline Surface Water Monitoring Location
 - Baseline Gaging Station
 - South Heart Meteorological Station
 - Baseline Groundwater Monitoring Well
 - Baseline Staff Gage
 - Baseline Wetland Water Quality Sampling Location
 - Structure on or Within One-Half Mile of the Permit Area and Extended Mine Plan Boundary
 - Shallow Overburden Sampling Location
 - Baseline Overburden Sampling Location
 - Wetland
 - Study Area
 - Permit Boundary
 - Mine Pit Boundary
 - Township and Range
 - Section
 - 230 kV Transmission Line
 - 345 kV Transmission Line
 - 41.6 kV Transmission Line
 - Natural Gas Pipeline
 - Railroad
 - Public Road
 - Private Road
 - Drainage Way
 - Index Contour - 20 Ft Interval
 - Contours - 5 Ft Interval

REFERENCE

Baseline Study Locations: See appropriate sections.
 Study Area: Golder, 10/18/2007.
 Permit Boundary: IEL, 11/12/2009.
 Mine Pits: Norwest, 1/20/2010.
 Transmission Lines, Natural Gas Pipeline: Assorted, 10/15/2007.
 Township, Range and Sections: ND HUB, 6/20/2006.
 Roads, Railroad, Drainage Ways: Digitized from aerial photography, 6/19/2006.
 Contours: Generated from aerial photography stereo pairs, 6/19/2006.
 Projection: StatePlane, North Dakota South, NAD27, Feet.



GENERAL SITE MAP SHEET 1 OF 3

SOUTH HEART COAL LLC
 SOUTH HEART LIGNITE MINE
 SOUTH HEART, NORTH DAKOTA

FIG 2.0A