

-5,000

15,000

6700

6750

6800

6800

6700

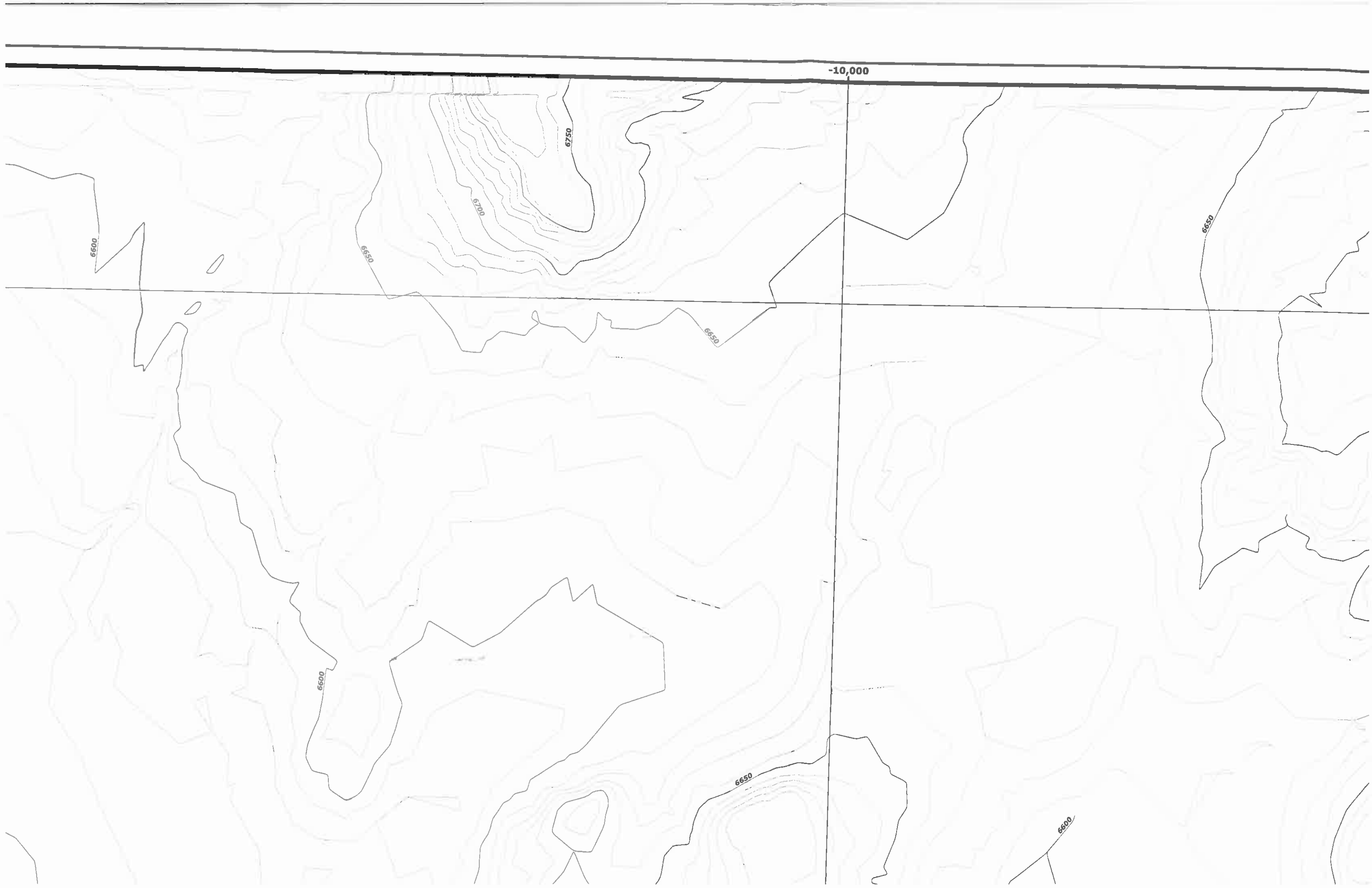
6850

6900

6750

6850

6850



-15,000

15,000

6500

6500

6550

6600

6550

6700

6550

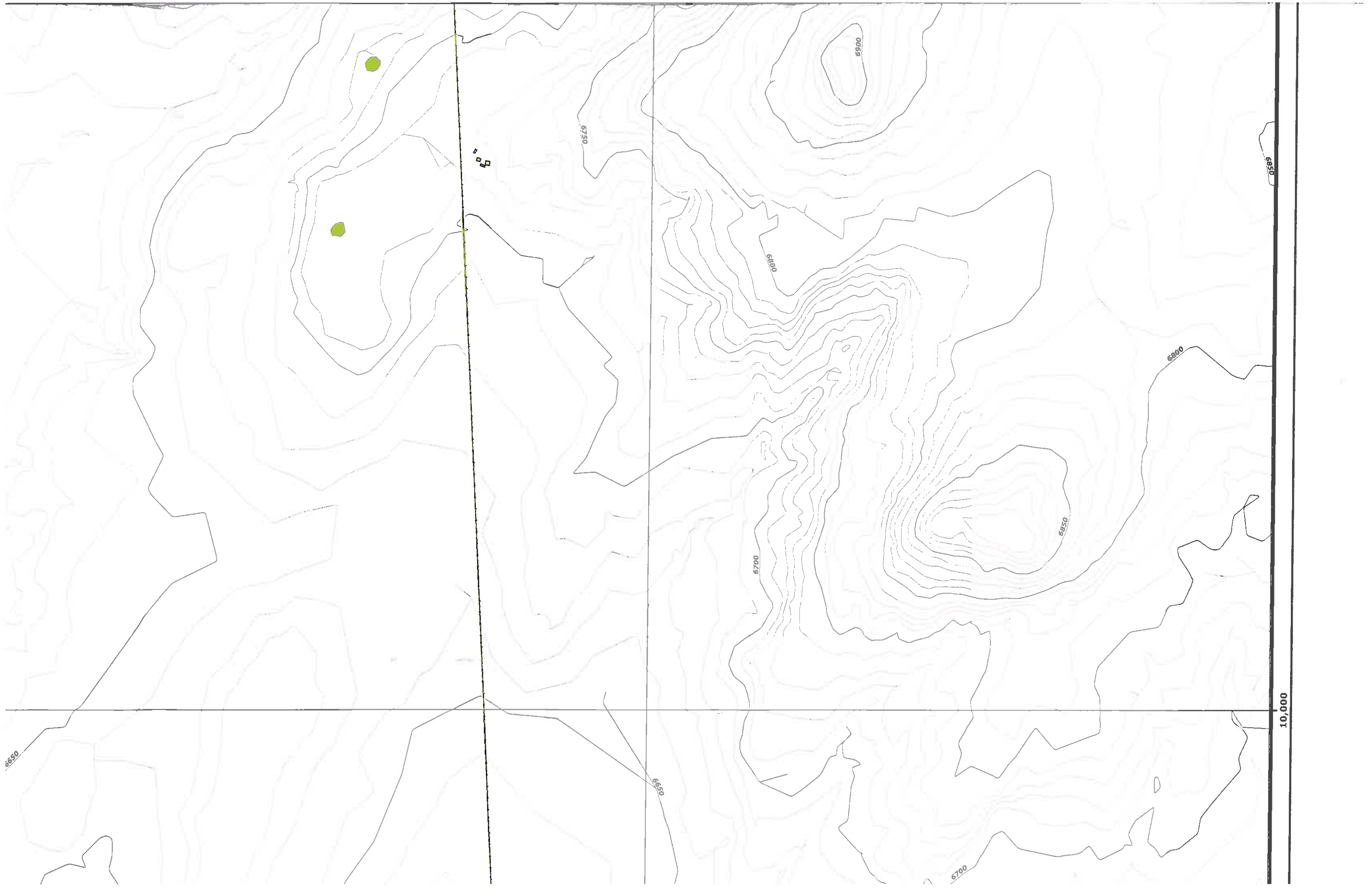
6500

6550

6550

6600







10,000

6550

6500

6550

6550

6600

6600





10,000

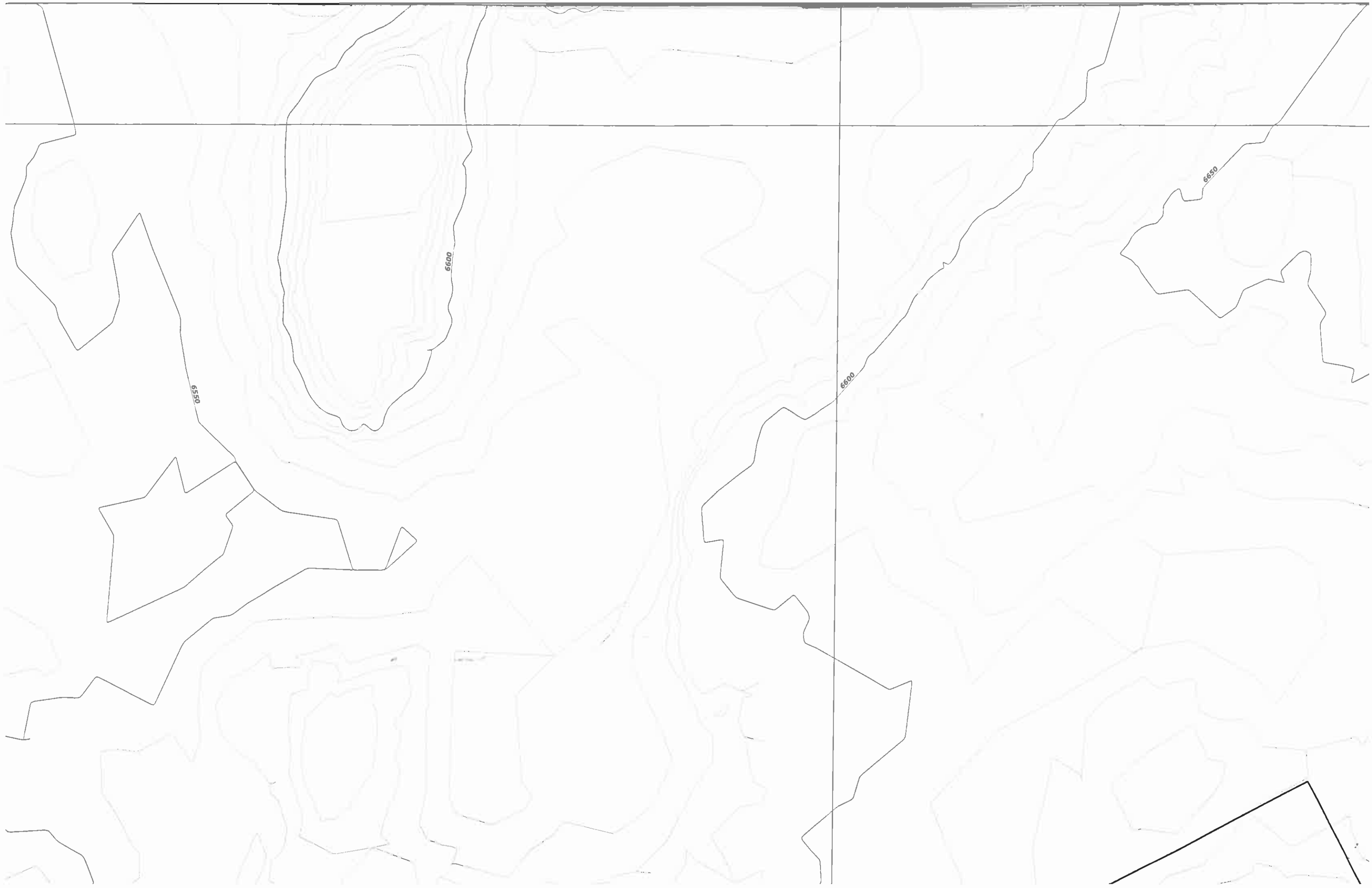
State Route 564

6650

6700

6650

6650



10,000

6500

6550

6550

6600



ENGINEER'S CERTIFICATION

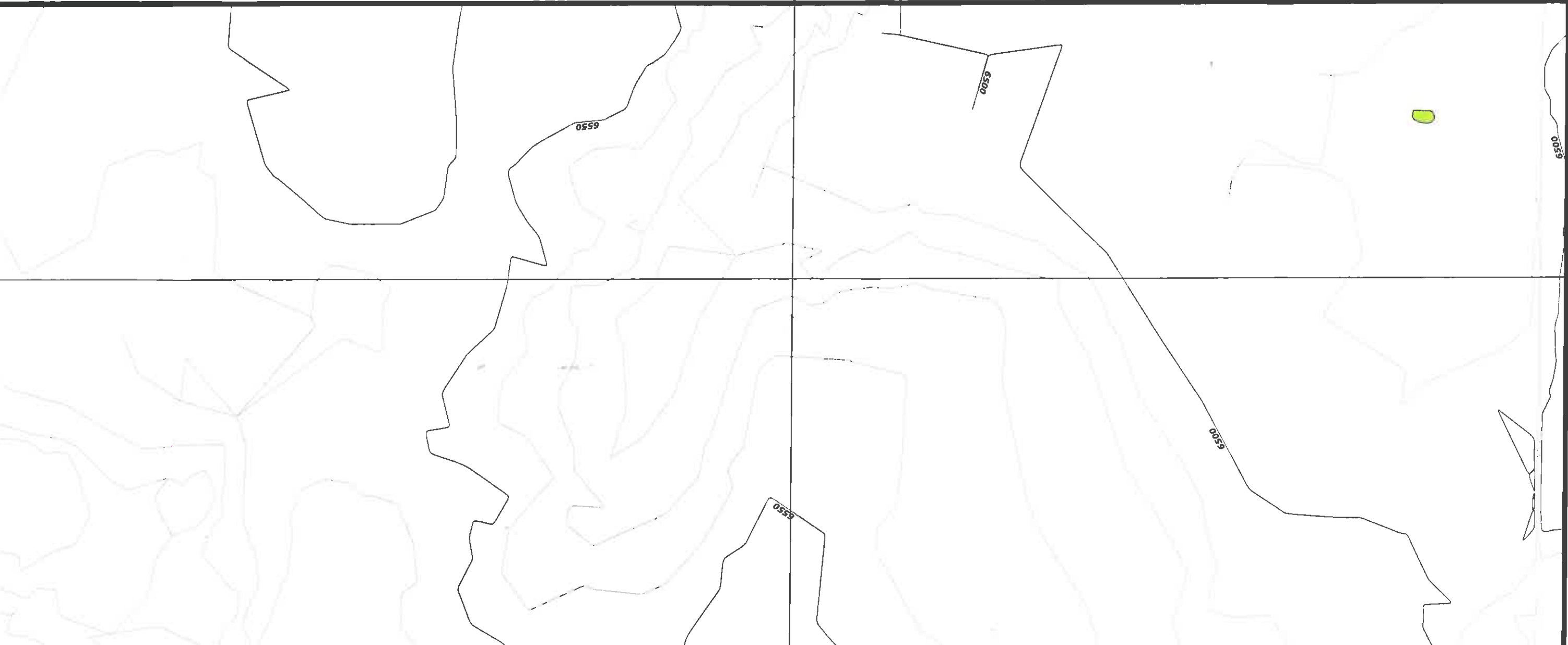
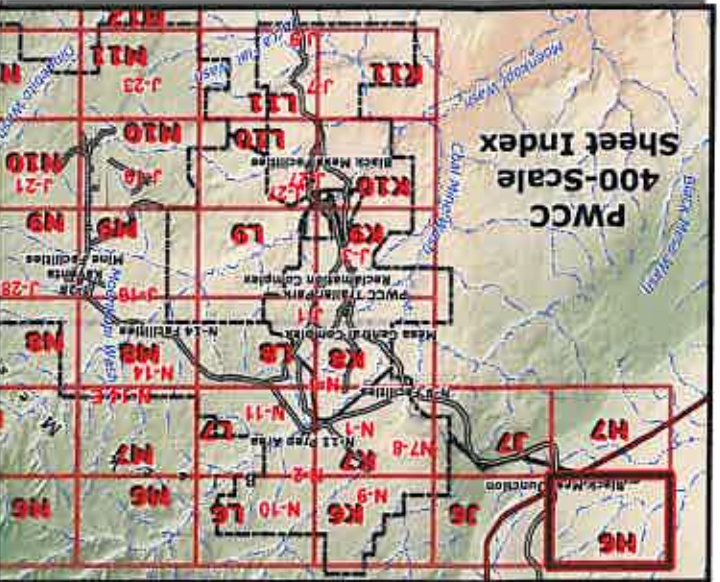
James G. Schlenvogt
 Engineering Manager
 Peabody Western Coal Company

Date SEP 25 2008

MAP REVISIONS

CHK'D	DATE	DESCRIPTION
JGS	Jan 14, 2005	N09 5 Year Mineplan Rev
JGS	Jun 15, 2005	N09 Facilities Revision
JGS	Sep 30, 2009	N09 & N06 Facilities Revision
JGS	Dec 15, 2005	N09 Sequence Revision
JGS	Jan 20, 2006	OSM Response
JGS	Feb 4, 2006	N06 Road As-Built Response
JGS	Feb 24, 2006	N09 Facilities Revision
GW	Apr 12, 2006	TCPs and Roads Revision
JGS	May 9, 2006	N09 Road As-Built
JGS	Jul 12, 2006	Airport Rd / WW6 Waterline Revision
JGS	Aug 30, 2006	Road Alignment Revision
JGS	Dec 21, 2007	Software Upgrade / Mine-wide feature updates
JGS	Apr 25, 2008	Airport Revision
JGS	Jun 17, 2008	OSM Response

- 85400 NOTES:
1. SEE DRAWING NO. 85360 FOR THE MINING AFFECTED LANDS.
 2. SEE DRAWING NO. 85405 FOR THE GENERAL LOCATION OF THESE STRUCTURES.
 3. SEE DRAWING NO. 85460-85490 FOR THE MINE SUPPORT FACILITIES MAP.
 4. SEE DRAWING NO. 93500 FOR THE LOCATION OF THE ENVIRONMENTAL MONITORING SITES.
 5. SEE CHAPTERS 6-7 AND 20-26 FOR INFORMATION ON THE FACILITIES AND RECLAMATION PLAN.
- "DRAINAGE DIRECTION ON FILL EMBANKMENTS ONLY APPLY WHEN MSHA SAFETY BERM EXISTS."
- "PRIMARY ROADS HAVE BEEN CONSTRUCTED OR RECONSTRUCTED AS DESIGNED AND IN ACCORDANCE WITH THE APPROVED PLAN."



-15,000

5,000



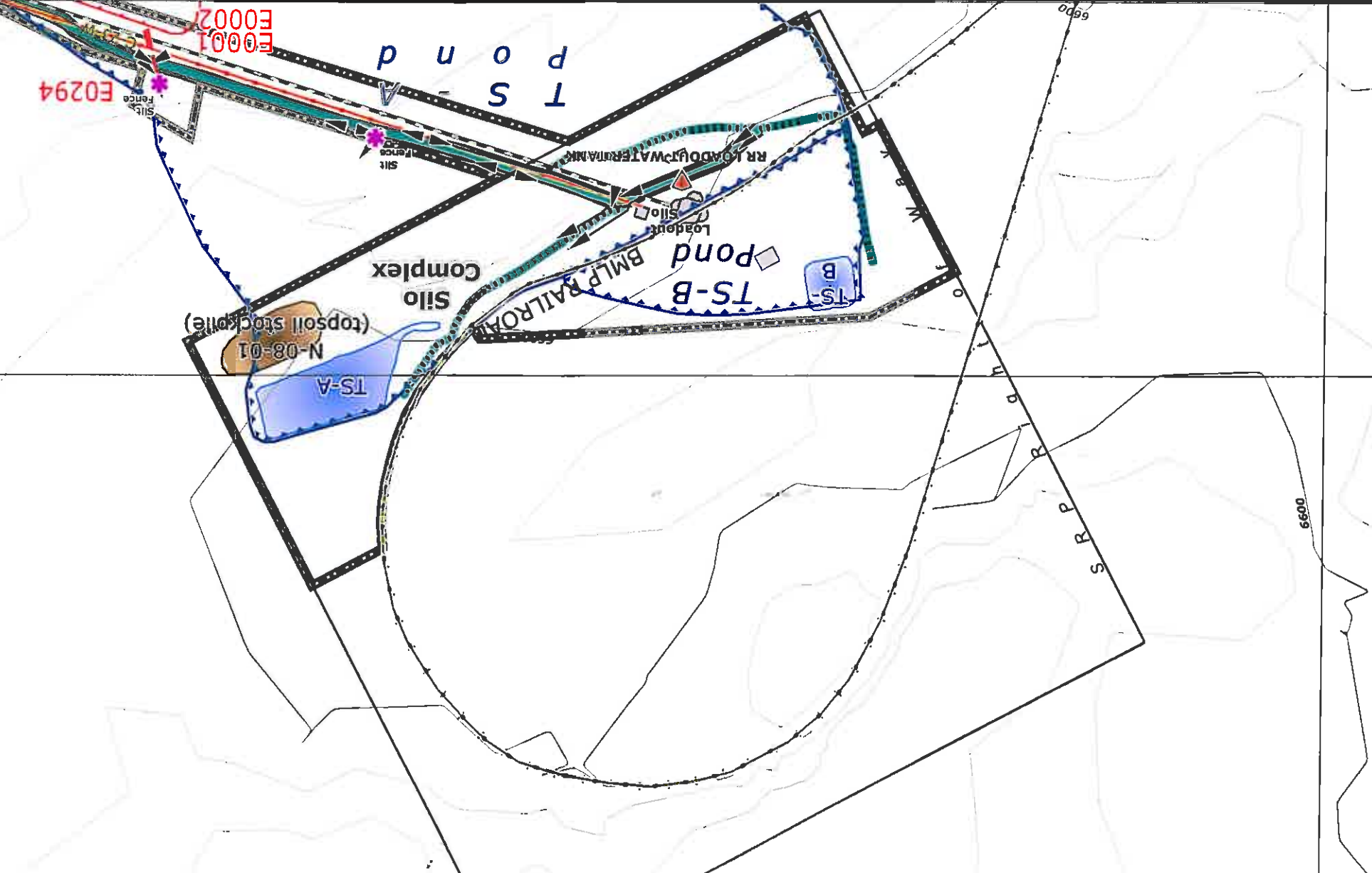
- Water Impoundment Features**
- Existing Impoundment/SAE Watershed Boundary
 - Proposed Reclaimed
 - Proposed Existing
 - Impoundment/SAE Watershed Boundary
- Mine Area Facilities and Structures**
- PWCC Buildings and Structures
 - Coal Stockpile
 - Scoria Pit
 - PWCC Powerline
 - Non-PWCC Powerline
 - Explosives Storage Facility
 - Non-PWCC Buildings / Residences

- Culvert Features**
- Existing
 - Proposed
 - Culvert Watershed Boundary
- Mining Status Data**
- Future Mining Areas
 - Mined-Out Areas
 - Highwall (7/6/1990)

- Drainages and Diversions**
- Major Drainage
 - Road Drainage Direction
 - Diversions
- Other Water Features**
- PWCC Water Line
 - Navajo Water Well
 - Sewage Facility / Lagoon
- Administrative Boundaries**
- 01 Permit Line
 - PWCC Lease Line
 - Pre-Law Areas
 - Navajo-Hopi Partition Line

- Transport**
- PWCC
 - SRP/
 - PWCC Permit 01

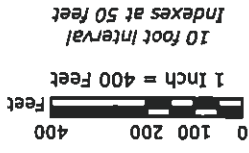
-10,000



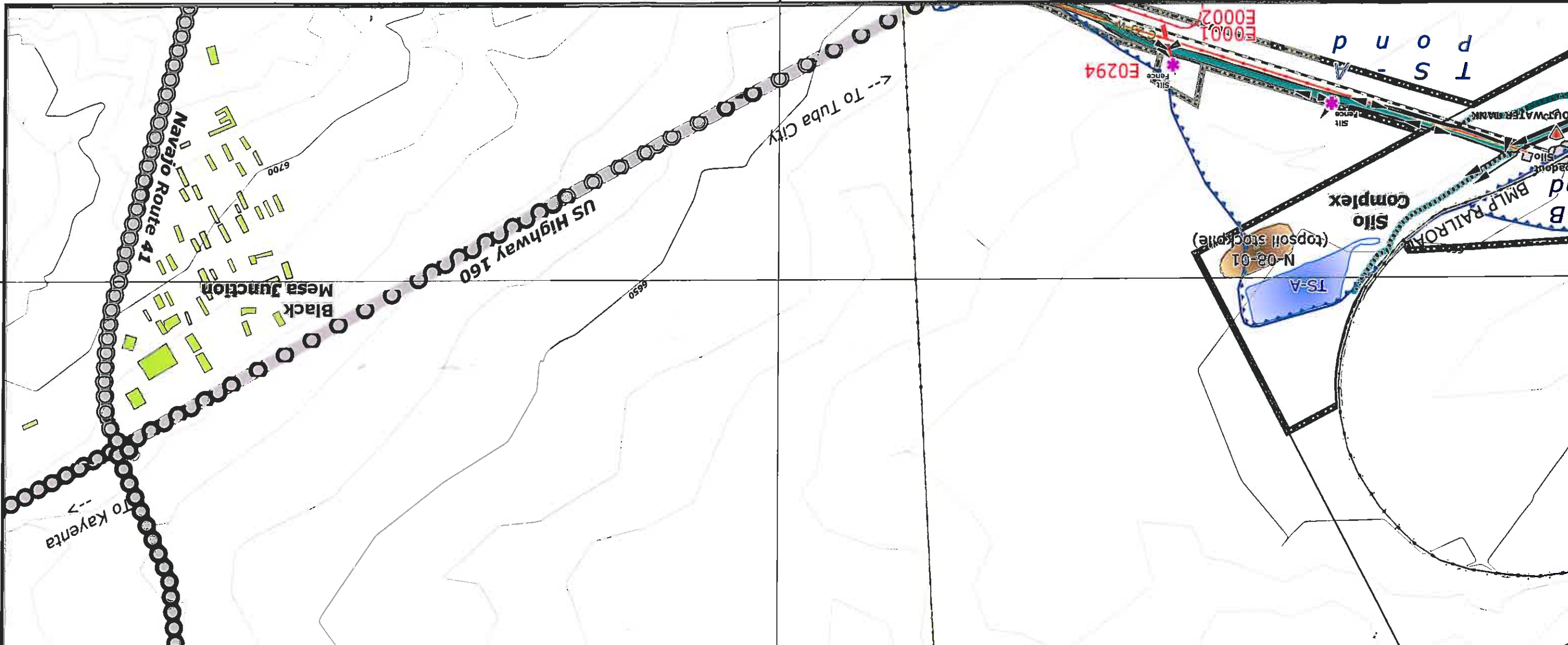
Drainage Area and Facilities Map Drawing #85400 Sheet H6

PEABODY WESTERN
Black Mesa Complex
PO Box 650
Kayenta, Arizona 86033

Produced by PWCC GIS
Sep 25, 2008



- | | | | |
|-----------------------|-----------------------------|------------------------------|----------------------------------|
| BTCA Features | Transport Features | Other Water Features | Administrative Boundaries |
| Riprap Rock * | PWCC Conveyor ~~~~~ | PWCC Water Line ~~~~~ | 01 Permit Line [] |
| Rock Checkdam * | SRP/NGS Railroad —+— | Navajo Water Well [] | Pre-Law Areas [] |
| Silt Fence * | | Sewage Facility / Lagoon [] | Navajo-Hopi Partition Line [] |
| Straw Bales * | PWCC Features | | |
| Revegetated Areas [] | PWCC Permit 01 [] | | |
| | PWCC Permit 1D [] | | |
| | Primary Road [] | | |
| | Pit Ramp [] | | |
| | Ancillary Road [] | | |
| | Non-Mining Related Road [] | | |
| | Non-Mining Highway [] | | |



5,000

-5,000