

(SHEET 1 OF 1)

| |
|----------------------------|
| VISIONS |
| DESCRIPTION |
| VE YEAR PERMIT REVISION |
| Q. SITES REVISION |
| O.V. RESPONSE |
| VE YEAR PERMIT REVISION |
| H1 POND REVISION |
| VE YEAR MINE PLAN REVISION |
| YEAR MINE PLAN REV. |
| |
| |
| |

DRAINAGE AREA AND FACILITIES MAP

DRAWING NO. 85400

**Kayenta Mine, Black Mesa Complex
PO Box 650, Kayenta, Arizona 86033**

| | | | |
|---|-----------|-------------------|------------------|
| Produced For: | PWCC | Map By: | J. Hamilton |
| Map Scale: | 1" = 400' | Contour Interval: | 10 FT. |
| Photo Date: | N/A | Photo Resolution: | N/A |
| c:\pblm_data_data_r85400\pblm\pblm2.dwg | | Plot Date: | January 21, 2004 |



VISIONS

| DESCRIPTION |
|----------------------------|
| VE YEAR PERMIT REVISION |
| Q. BITES REVISION |
| O.V. RESPONSE |
| VE YEAR PERMIT REVISION |
| H POND REVISION |
| VE YEAR MINE PLAN REVISION |
| YEAR MINE PLAN REV. |

(SHEET N8)

DRAINAGE AREA AND FACILITIES MAP

DRAWING NO. 85400

**Kayenta Mine, Black Mesa Complex
PO Box 650, Kayenta, Arizona 86033**

Produced For:

PWCC

Map By:

J. Hamilton

Map Scale:

1" = 400'

Contour Interval:

10 FT.

75000

13

24

24

25



| REV | CHKD | DATE | DE |
|-----|------|----------|----|
| | JGS | 09/01/95 | EV |
| | JGS | 10/18/95 | EA |
| | JGS | 04/24/96 | N |
| | JGS | 12/02/96 | ET |
| | JGS | 02/13/98 | J2 |
| | JGS | 12/07/01 | FT |
| | JGS | 01/20/04 | 5 |

NOTES:

- SEE DRAWING NO. 85380 FOR THE MINING AFFECTED LANDS.
- SEE DRAWING NO. 85405 FOR THE GENERAL LOCATION OF THESE STRUCTURES.
- SEE DRAWING NO. 85600 FOR THE LOCATION OF THE ENVIRONMENTAL MONITORING SITES.
- SEE CHAPTERS 6-7 AND 20-28 FOR INFORMATION ON THE FACILITIES AND RECLAMATION PLAN.

TRAFFIC DIRECTION ON ALL EMBANKMENTS ONLY APPLY WHEN ASHA SAFETY BERM EXIST.

PRIMARY ROADS HAVE BEEN CONSTRUCTED OR RECONSTRUCTED AS DESIGNED AND IN ACCORDANCE WITH THE APPROVED PLAN.

| | | | | | |
|----|----|-----|-----|-----|-----|
| H6 | J6 | K6 | L6 | M6 | N6 |
| H7 | J7 | K7 | L7 | M7 | N7 |
| | | K8 | L8 | M8 | N8 |
| | | K9 | L9 | M9 | N9 |
| | | K10 | L10 | M10 | N10 |

Legend:

- Major Drainage
- Waterline
- PWOC Storage Facilities
- Highwall (7'-6-00')
- PWOC Powerline
- Non-PWOC Powerline
- PWOC Conveyor
- Railroad
- Nevado Water Wall
- SPCC Basin

Legend:

- Nevejo-Hopi Partition Line
- PWOC Lease Line
- Pre-Leak Line
- Existing AZ-0001D Permit Line
- Dykes/dike
- BTCA Sites - Slurry Bases
- BTCA Sites - Road Checkdam
- BTCA Sites - Salt Fences
- BTCA Sites - Ramp
- BTCA Sites - Revegetation



JJA TRACT #2 LEASE BOUNDARY

J-28

23 24

25 26

25 26

| | | |
|----------------------|-------------------------|-------------------------------|
| Red Boundary | Major Drainage | Mineral-Hop Partition Line |
| Black PI | Waterline | Poco Lease Line |
| Impound Storage | PWCC Storage Facilities | Pre-Lease Line |
| PWCC Buildings | Highwell (7-4-00) | Existing A2-0001D Permit Line |
| Short Waterline Line | PWCC Powerline | Directions |
| | Non-PWCC Powerline | STCA Sites - Straw Bales |



- NOTES:
1. SEE DRAWING NO. 65300 FOR THE MINING AFFECTED LANDS.
 2. SEE DRAWING NO. 65400 FOR THE GENERAL LOCATION OF THESE STRUCTURES.
 3. SEE DRAWING NO. 65500 FOR THE LOCATION OF THE ENVIRONMENTAL MONITORING SITES.

| CHK'D | DATE | REVISION |
|-------|----------|----------|
| JGS | 03/01/85 | F |
| JGS | 10/18/85 | E |
| JGS | 04/24/86 | N |
| JGS | 12/02/88 | F |
| JGS | 02/13/88 | J |

70000'

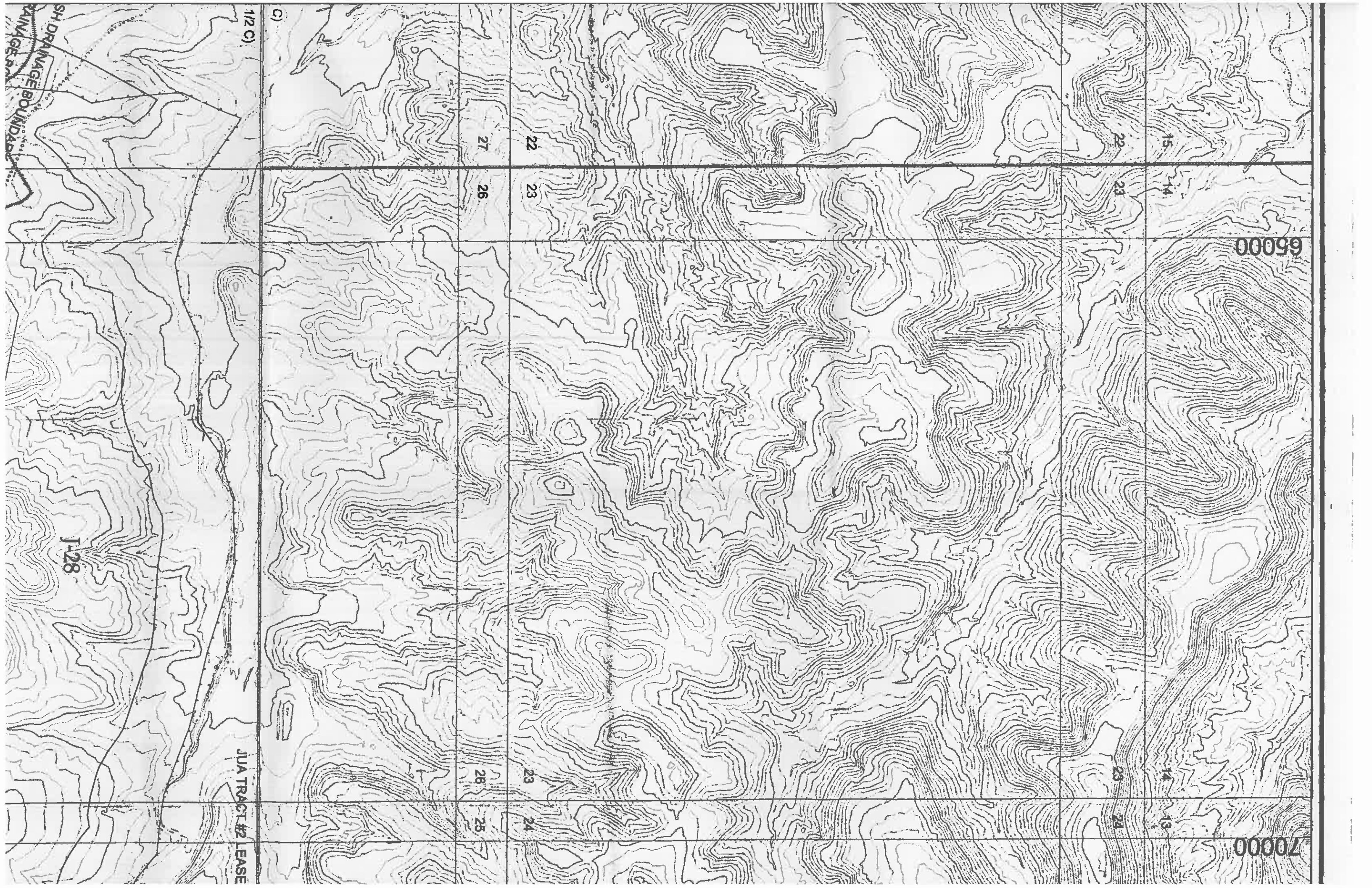
14 19

23 24

23 24

26 25

JUA TRACT #2 LEASE BOUNDARY



SH DRAINAGE BOUNDARY

1/2 C)

C)

65000

70000

JUA TRACT #2 LEASE

1-28

27

26

26

25

22

23

23

24

15

14

14

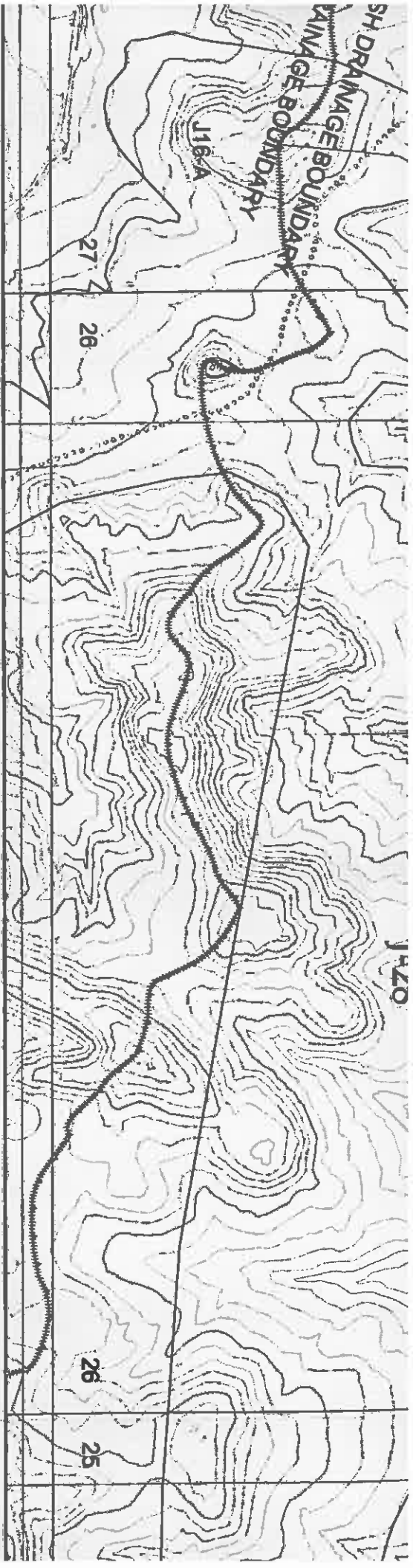
13

22

23

23

24



ATTENTION

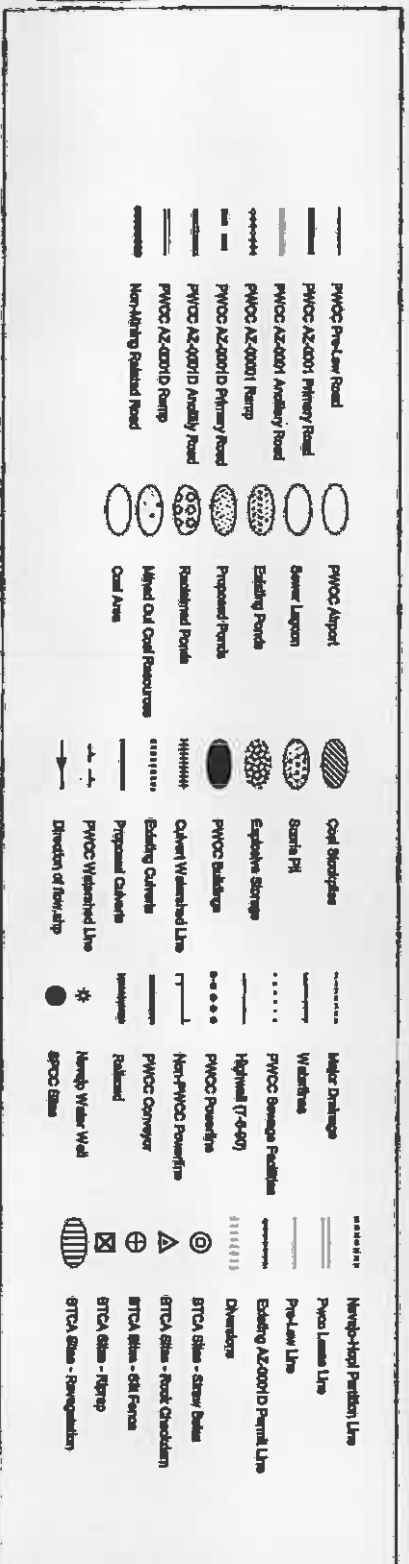
DATE: 15-2003



| | | | | | | | |
|--|----------------------------|--|------------------------|--|-------------------------|--|------------------------------|
| | PWOC Pre-Law Road | | Coal Stockpiles | | Major Drainage | | Non-Proprietary Parcel Line |
| | PWOC AZ-0001 Primary Road | | Scrub PI | | Wetlands | | Proprietary Line |
| | PWOC AZ-0001 Access Road | | Explosive Storage | | PWOC Storage Facilities | | Existing AZ-0001 Parcel Line |
| | PWOC AZ-0001 Ramp | | PWOC Buildings | | Highwall (7-4-07) | | Checkers |
| | PWOC AZ-0010 Primary Road | | Coal Washed Lim | | Non-PWOC Powerline | | STCA Sites - Stow Bales |
| | PWOC AZ-0010 Access Road | | Building Calverts | | PWOC Conveyor | | STCA Sites - Root Choker |
| | PWOC AZ-0010 Ramp | | PWOC Washed Lim | | Railroad | | STCA Sites - 081 Pines |
| | Non-Proprietary Road | | Direction of flow ship | | Heavy Water Wall | | STCA Sites - RSTP |
| | PWOC Airport | | Proposed Calverts | | gRPC Sites | | STCA Sites - Reclamation |
| | Seaw Lagoon | | Proposed Calverts | | | | |
| | Existing Ponds | | | | | | |
| | Proposed Ponds | | | | | | |
| | Reclaimed Ponds | | | | | | |
| | Up and Out Coal Reservoirs | | | | | | |
| | Coal Area | | | | | | |

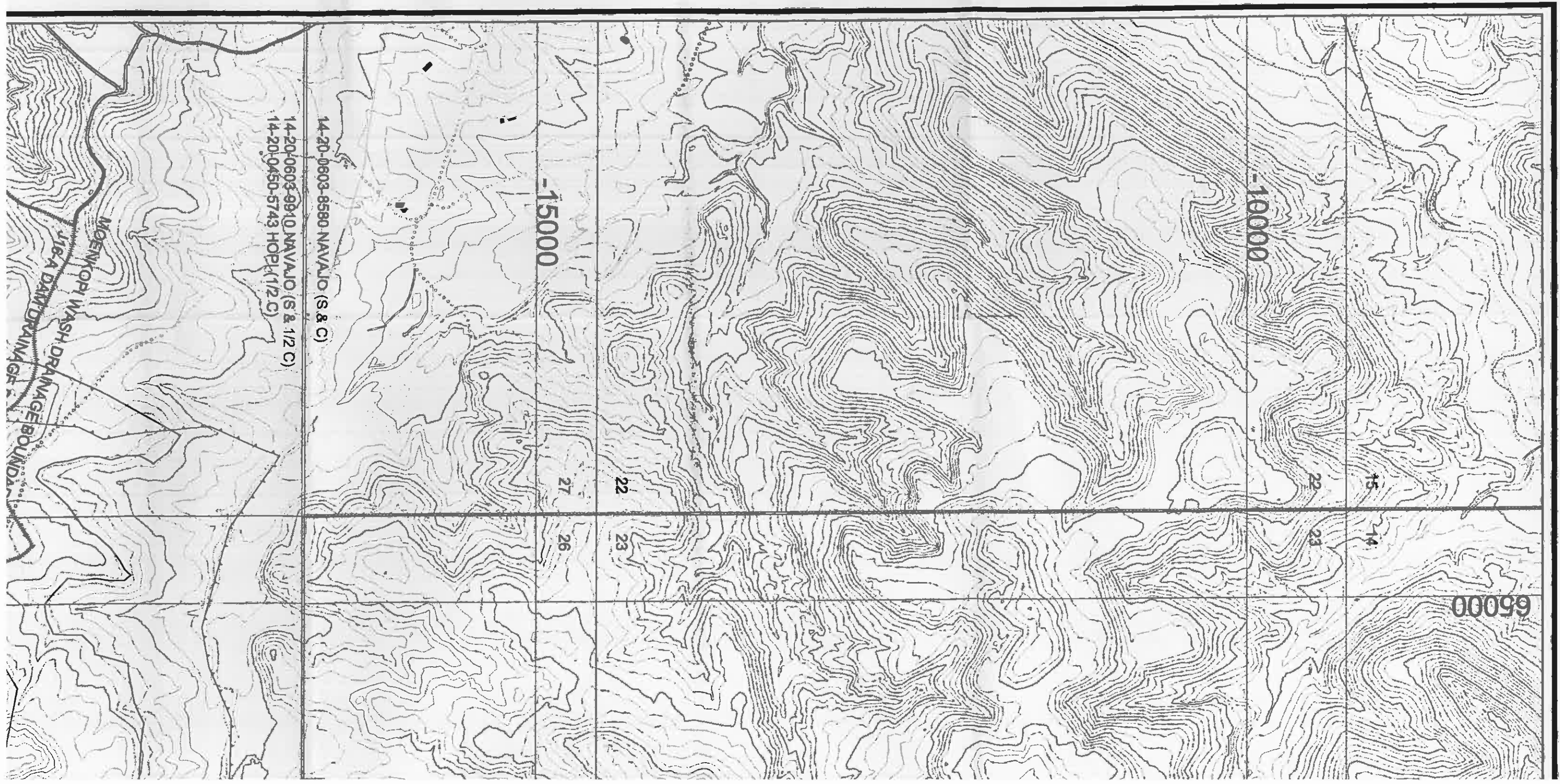
DEC 15 2003

800



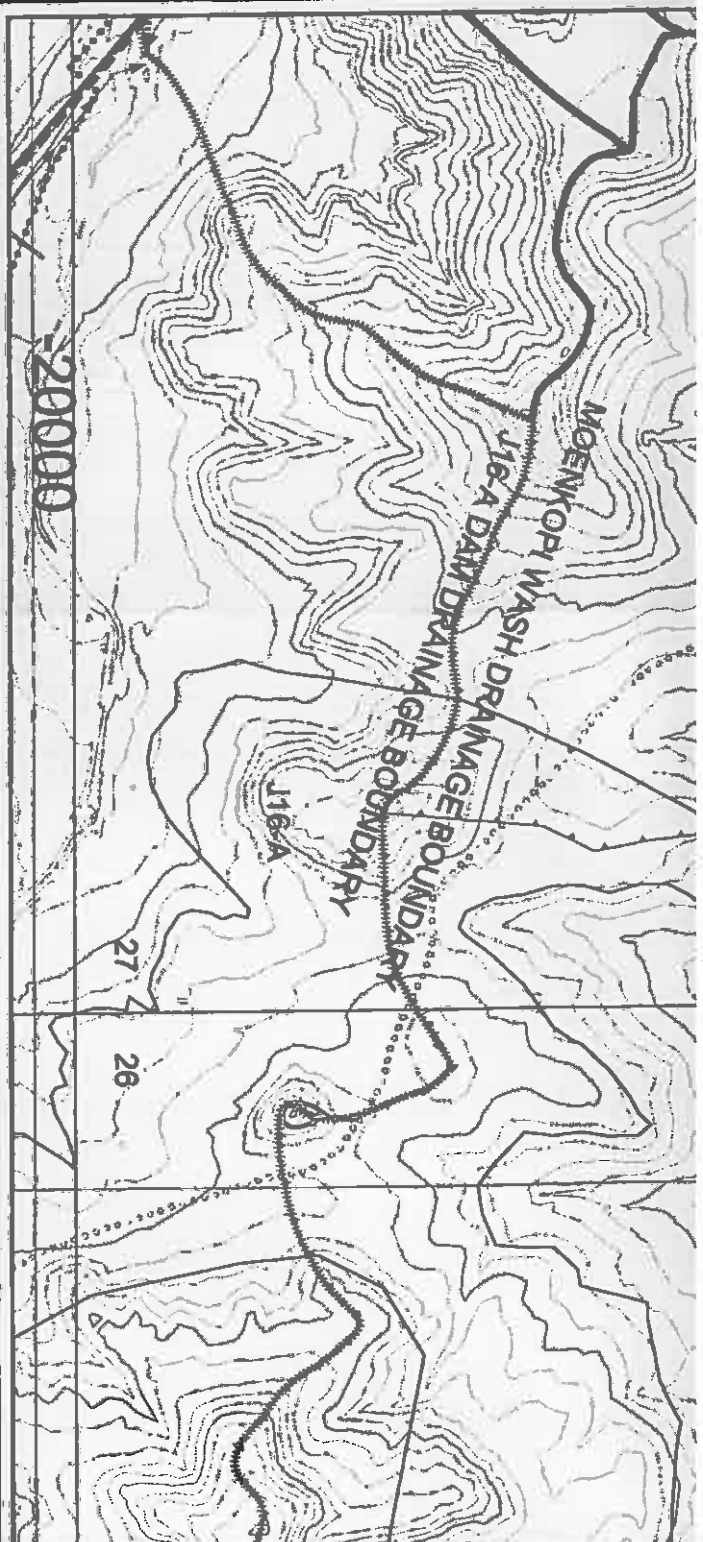
| | | | | | | | |
|--|-----------------------------|--|-----------------------|--|-------------------------|--|------------------------------|
| | PWOC Pre-Law Road | | Coal Structures | | Major Drainage | | Neighborhood Partition Line |
| | PWOC AZ2001 Primary Road | | Scoria Pit | | Wasteline | | PWOC Lane Line |
| | PWOC AZ2001 Auxiliary Road | | Explosive Storage | | PWOC Storage Facilities | | Pop-Lam Line |
| | PWOC AZ2001 Ramp | | PWOC Buildings | | Highwall (7-9-ft) | | Existing AZ2001D Permit Line |
| | PWOC AZ2001D Primary Road | | Quarry Wastebank Line | | PWOC Powerline | | Divergence |
| | PWOC AZ2001D Auxiliary Road | | Building Outcrops | | Non-PWOC Powerline | | BTCA Sites - Street Belms |
| | PWOC AZ2001D Ramp | | Proposed Outcrops | | PWOC Conveyor | | BTCA Sites - Rock Checkdam |
| | Non-Mining Related Road | | Proposed Outcrops | | Railroad | | BTCA Sites - Old Paved |
| | | | PWOC Identified Line | | Neighb. Water Wall | | BTCA Sites - Rightof |
| | | | Direction of flow/dip | | SPCC Sites | | BTCA Sites - Reevaluation |





14-20-0603-8580 NAVAJO (S & C)

14-20-0603-9910 NAVAJO (S & 1/2 C)
14-20-0450-5743 HOPI (1/2 C)



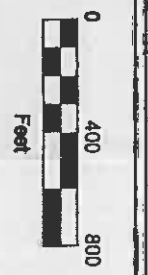
ENGINEER'S CERTIFICATION

JAMES G. SCHLIMMVOGEL

Engineering & Reclamation
Peabody Western Coal Company



DATE 15-2003



- | | | | |
|----|-----------------------------|---|----|
| —— | PMCC Pre-Low Road | ○ | PM |
| —— | PMCC AZ-0001 Primary Road | ○ | Ba |
| —— | PMCC AZ-0001 Auxiliary Road | ○ | Ed |
| —— | PMCC AZ-0001 Ramp | ○ | Pr |
| —— | PMCC AZ-0010 Primary Road | ○ | Ra |
| —— | PMCC AZ-0010 Auxiliary Road | ○ | Ma |
| —— | PMCC AZ-0010 Ramp | ○ | Ca |
| —— | Non-Mining Related Road | ○ | |

ENGINEER'S CERTIFICATION

DATE 15 2003

JAMES G. SCHLEIBVOG
Professional Engineer
No. 10000
State of Utah



Engineering & Reclamation
Peabody Western Coal Company



- | | | | |
|---|-----------------------------|---|-----|
| — | PWCC Pre-Low Road | ○ | PIN |
| — | PWCC AZ-0011 Primary Road | ○ | Ben |
| — | PWCC AZ-0011 Auxiliary Road | ○ | Eda |
| — | PWCC AZ-0011 Ramp | ○ | Pin |
| — | PWCC AZ-0010 Primary Road | ○ | Pin |
| — | PWCC AZ-0010 Auxiliary Road | ○ | Pin |
| — | PWCC AZ-0010 Ramp | ○ | Pin |
| — | Non-Mining Related Road | ○ | On |