

741

685

75000

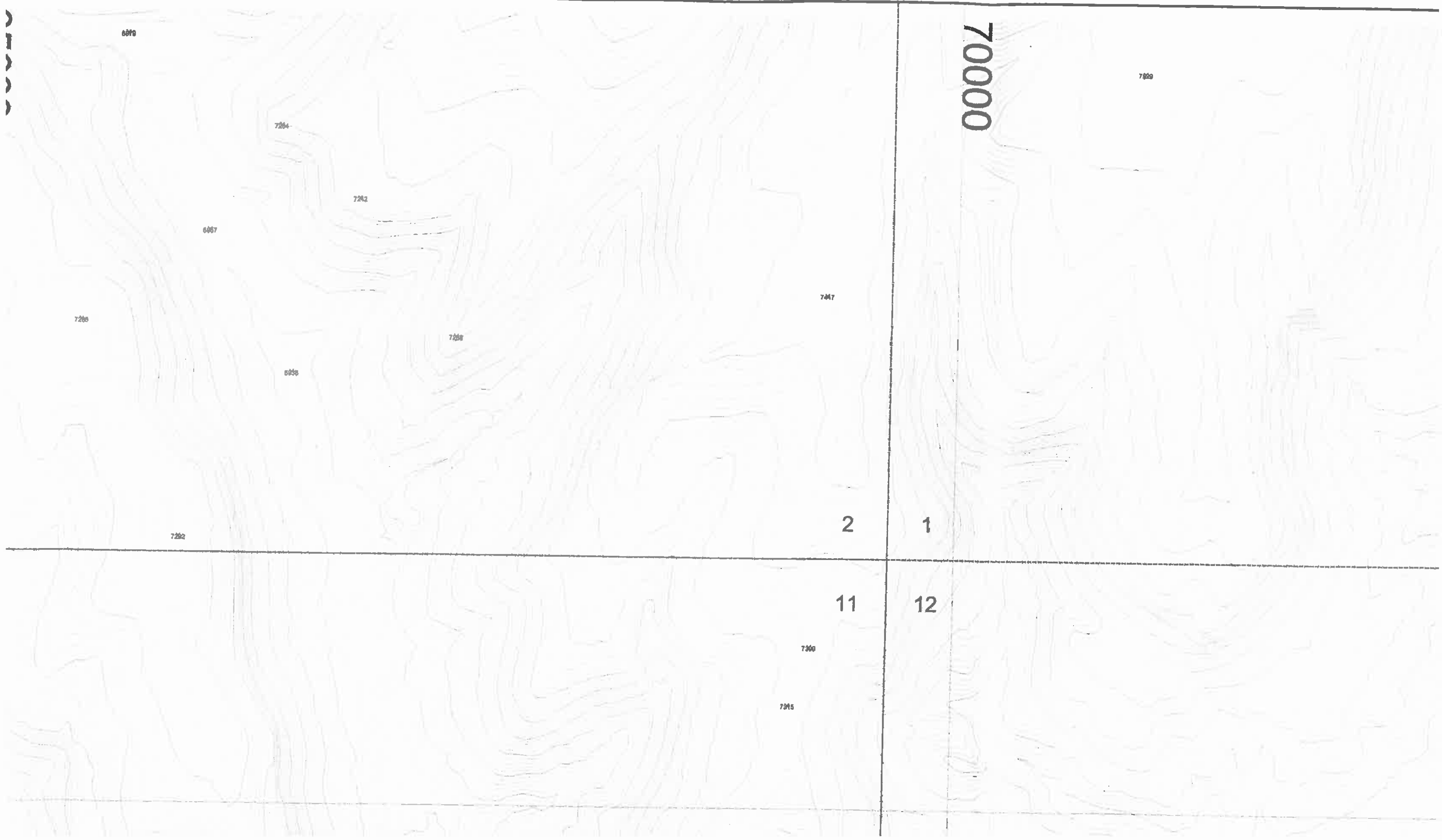
680

7850

7880

1

12



6070

7204

7202

6067

7200

5050

7050

7417

7000

70000

7202

2

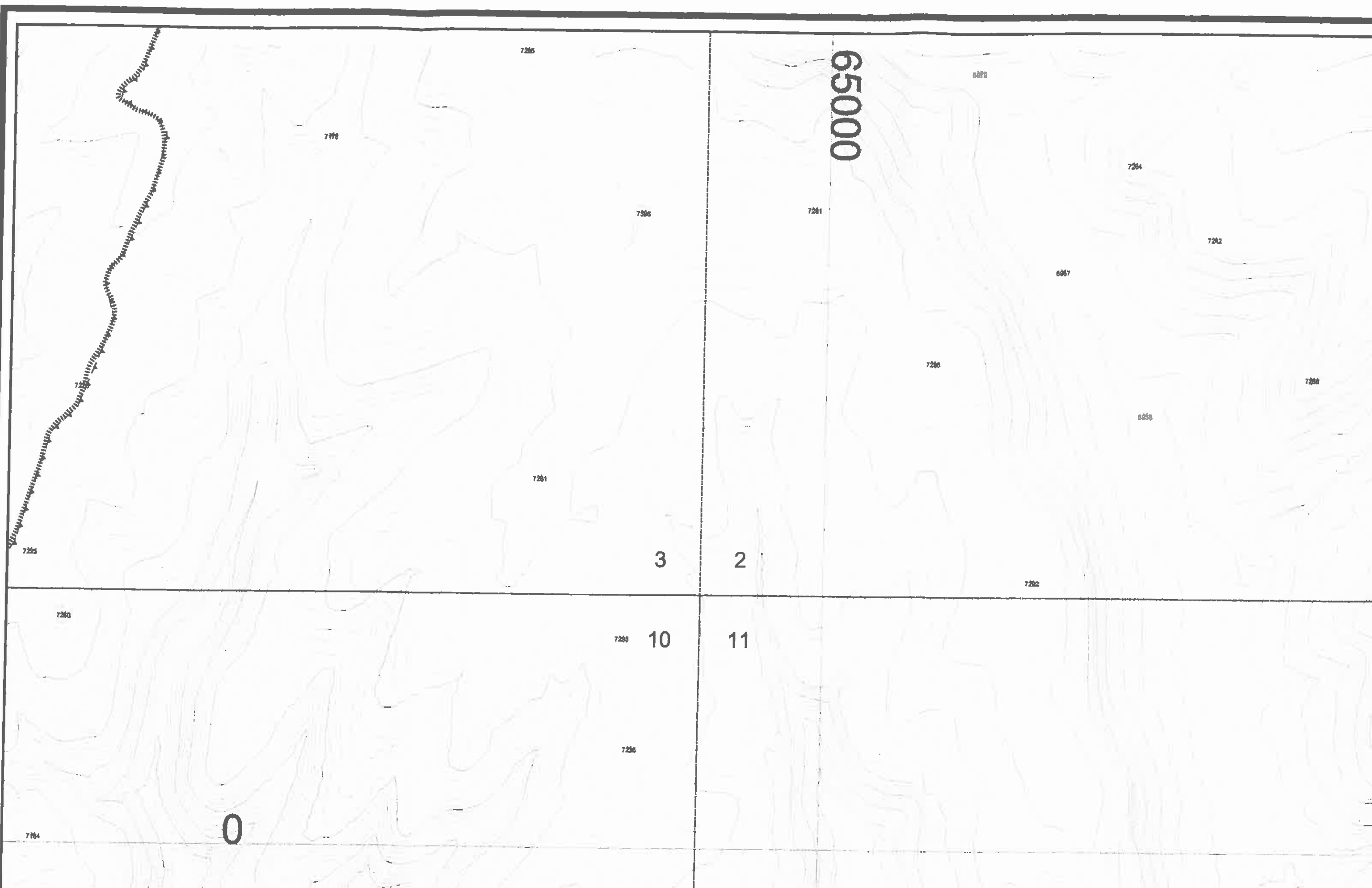
1

11

12

7300

7305



65000

7285

7178

7306

7281

6870

7264

7282

6867

7286

7288

6858

7261

3

2

7282

7225

7260

7285

10

11

7285

0

7184



7285

7341

7427

7689

7653

7450

7507

7616

7386

7347

7389

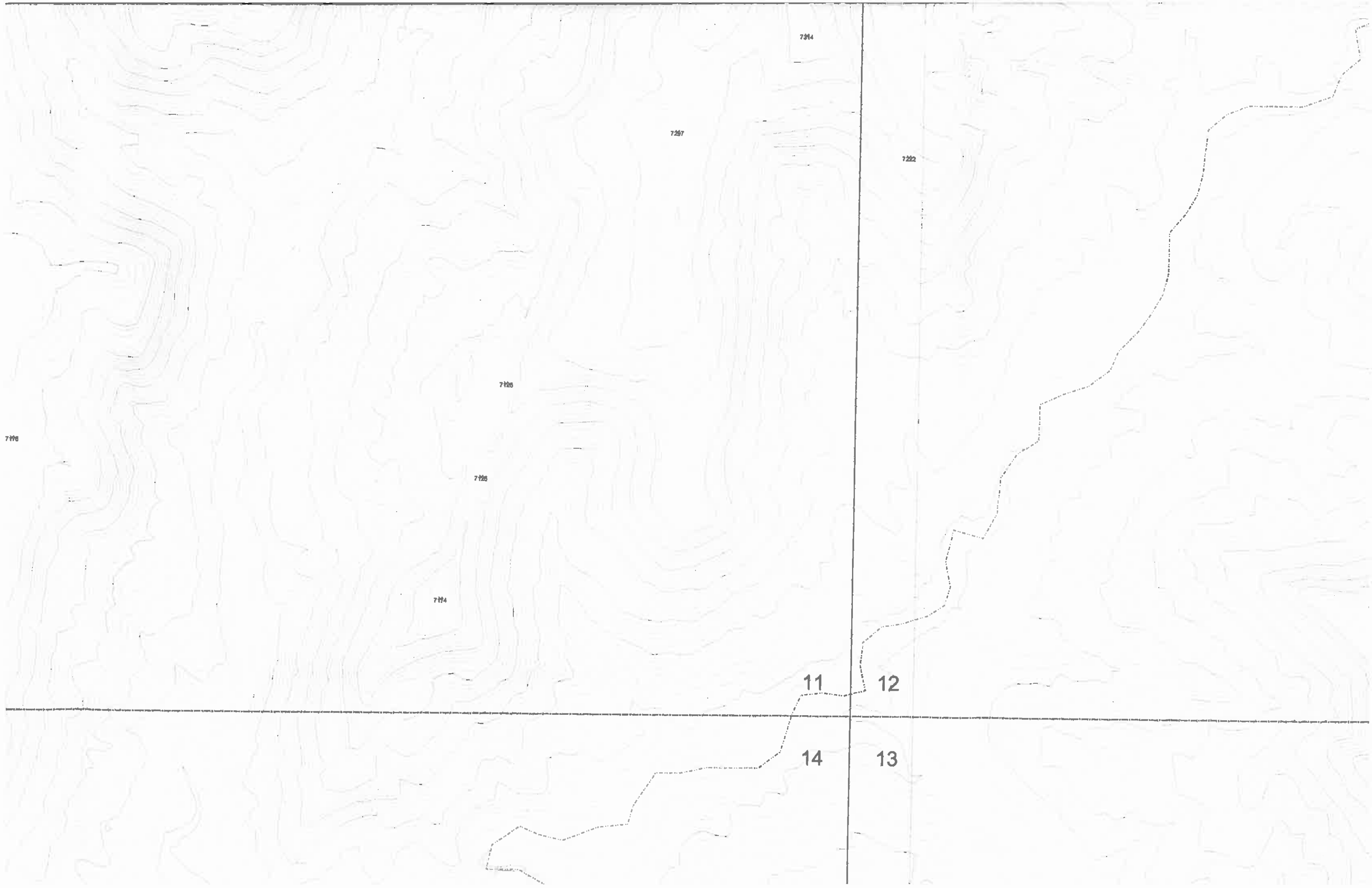
12

13

7601

7486

7805



794

787

782

780

770

764

11

12

14

13

700

7184

7280

7180

7187

7150

7150

7160

7157

7093

7165

10

11

15

14

7045

-5000

7182

7210

7191

7221

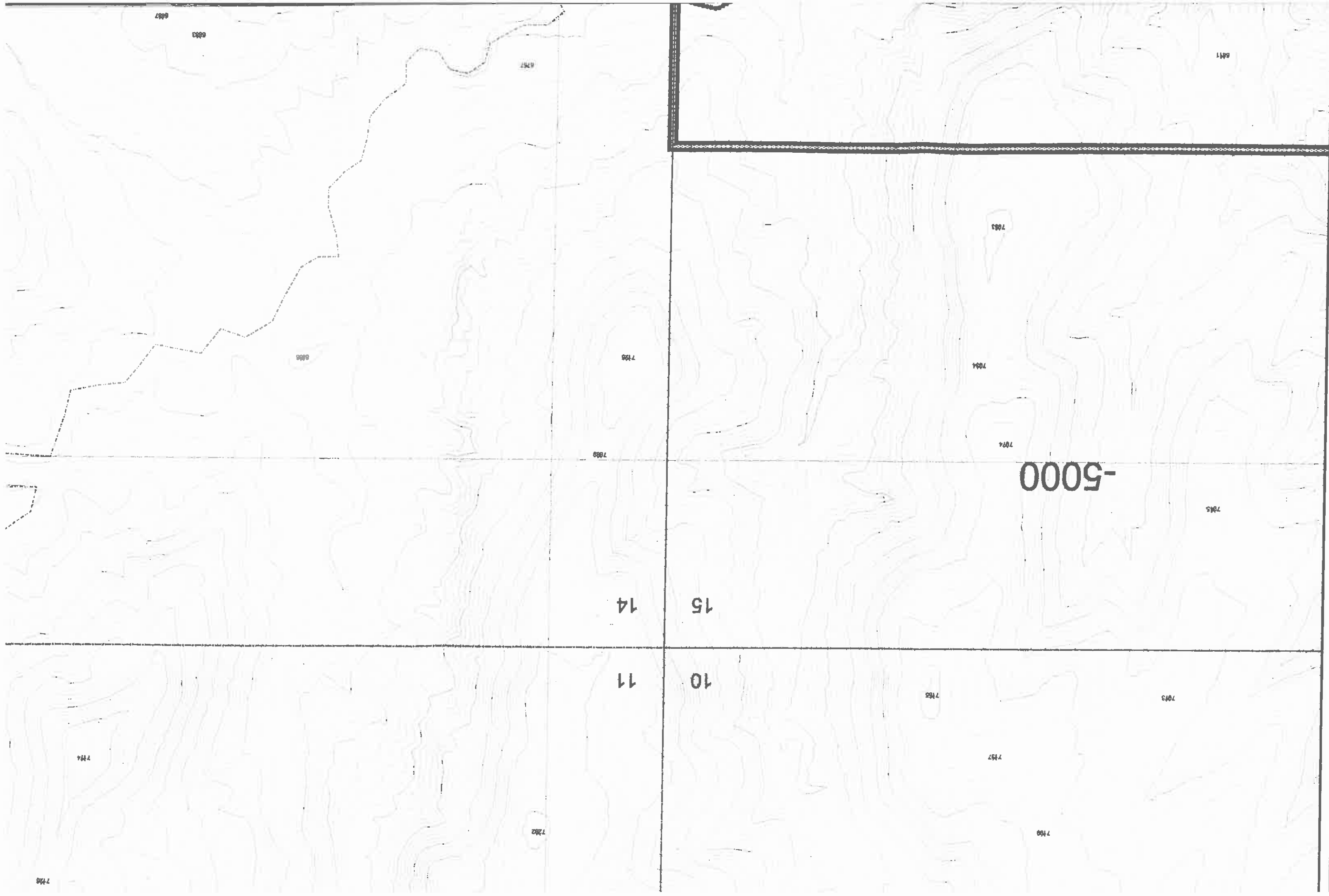
7198

7282

7185

7186

7174







9252621202930



13

12

7940

7997

7485

7691

7665

7250

7265

7268

7263

7220

7897

7881

7889

7347

7366

7459



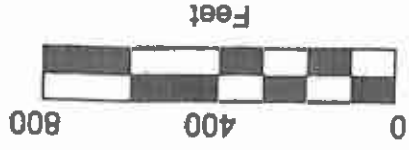
Engineering/Reclamation Manager  
Peabody Western Coal Company

*James G. Schlenvogt*  
JAMES G. SCHLENVOGT



# ENGINEER'S CERTIFICATION

DEC 07 2001  
DATE



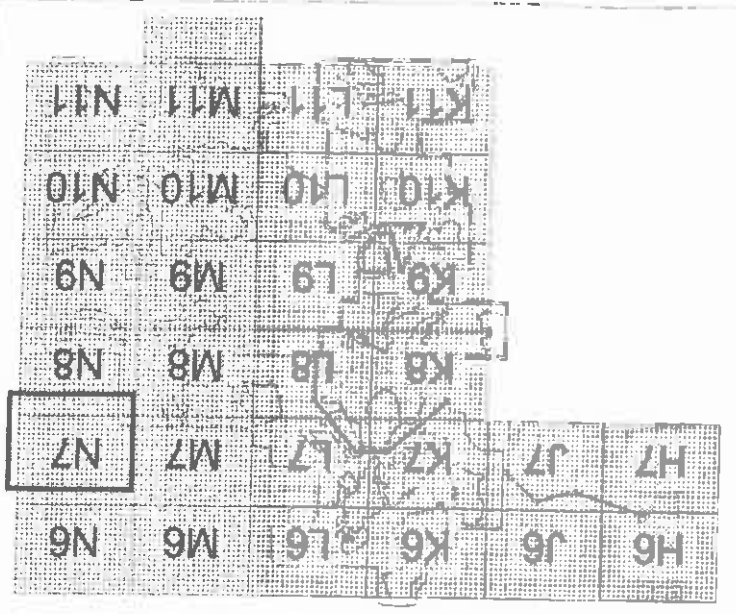
- PWCC Pre-Law Road
- PWCC AZ-0001 Primary Road
- PWCC AZ-0001 Andillary Road
- PWCC AZ-0001 Ramp
- PWCC AZ-0001D Primary Road
- PWCC AZ-0001D Andillary Road
- PWCC AZ-0001D Ramp
- Non-Mining Related Road

- PWCC Airport
- Sewer Lagoon
- Existing Ponds
- Proposed Ponds
- Reclaimed Ponds
- Mined Out Coal Resources
- Coal Area

- ▨ Coal Stockpiles
- Scoria Pit
- Explosive Storage
- PWCC Buildings
- ||||| Culvert Watershed Line
- ||||| Existing Culverts
- ||||| Proposed Culverts
- ▲ PWCC Watershed Line
- ▲ Direction of flow, smp
- May
- Wet
- PM
- Hght
- Non
- PWK
- Rail



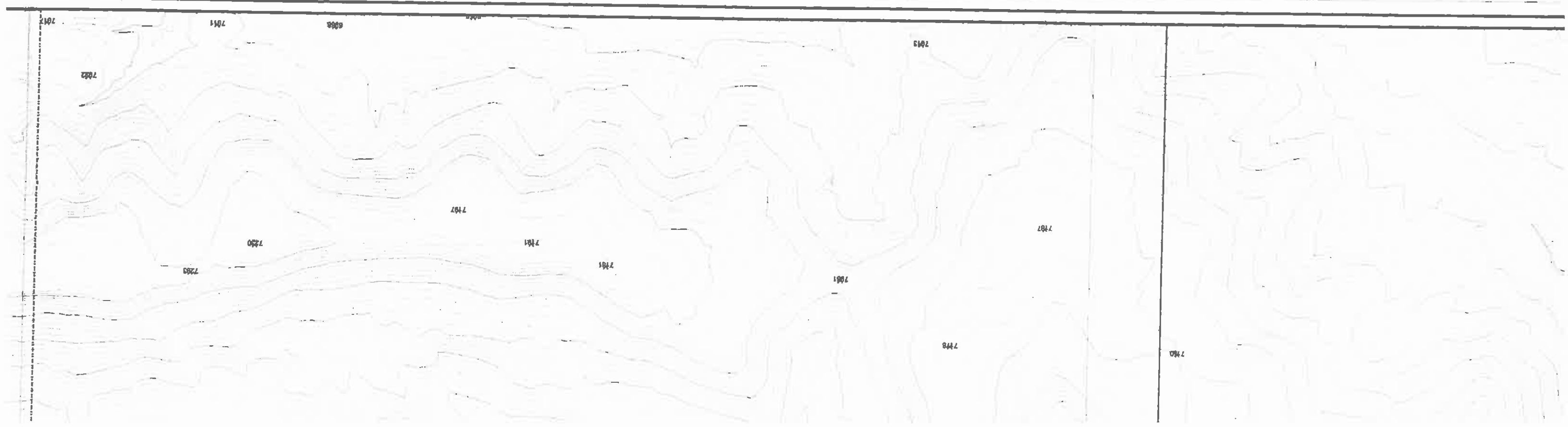
- Major Drainage
- Waterlines
- PWCC Sewage Facilities
- Highwall (7-8-90)
- PWCC Powerline
- Non-PWCC Powerline
- PWCC Conveyor
- Railroad
- Navajo-Hopi Partition Line
- Pwcc Lease Line
- Pre-Law Line
- Existing AZ-0001 Permit Line
- Existing AZ-0001D Permit Line
- Diversions
- SPCC Sites
- Navajo Water Well



- NOTES:**
1. SEE DRAWING NO. 85360 FOR THE MINING AFFECTED LANDS.
  2. SEE DRAWING NO. 85405 FOR THE GENERAL LOCATION OF THESE STRUCTURES.
  3. SEE DRAWING NO. 85460-85490 FOR THE MINE SUPPORT FACILITIES MAP.
  4. SEE DRAWING NO. 83500 FOR THE LOCATION OF THE ENVIRONMENTAL MONITORING SITES.
  5. SEE CHAPTERS 6-7 AND 20-28 FOR INFORMATION ON THE FACILITIES AND RECLAMATION PLAN.
  6. DRAINAGE DIRECTION ON FILL EMBANKMENTS ONLY APPLY WHEN MSHA SAFETY BERM EXIST.

CHK'D	DATE	DESCRIPTION
JGS	03/01/95	FIVE YEAR PERMIT REVISION
JGS	10/18/95	E.Q. SITES REVISION
JGS	04/24/96	N.O.V. RESPONSE
JGS	12/02/96	FIVE YEAR PERMIT REVISION
JGS	02/13/98	J21 POND REVISION
JGS	12/07/01	FIVE YEAR MINE PLAN REVIS

**REVISIONS**



Plot Date:	Friday, December 07, 2001	Check By:	Jim Schlenvogt
Photo Resolution:	N/A	Map Scale:	1" = 400'
Contour Interval:	10 FT.	Produced For:	PWCC
Map By:	PWCC-KM/ERD		

**DRAINAGE AREA AND FACILITIES MAP**  
 DRAWING NO. 85400  
 Kayenta Mine, Black Mesa Complex  
 PO Box 650, Kayenta, Arizona 86033

(SHEET N7)

CHKD	DATE	DESCRIPTION
JGS	03/01/95	FIVE YEAR PERMIT REVISION
JGS	10/18/95	E.O. SITES REVISION
JGS	04/24/96	N.O.V. RESPONSE
JGS	12/02/96	FIVE YEAR PERMIT REVISION
JGS	02/13/98	J21 POND REVISION
JGS	12/07/01	FIVE YEAR MINE PLAN REVISION

**NOTES:**

1. 85360 FOR THE MINING AFFECTED LANDS

2. 85405 FOR THE GENERAL LOCATION OF THESE

3. 85460-85490 FOR THE MINE SUPPORT FACILITIES MAP.

4. 85500 FOR THE LOCATION OF THE ENVIRONMENTAL

5. 20-26 FOR INFORMATION ON THE FACILITIES

6. PLAN

7. ON FILL EMBANKMENTS ONLY APPLY WHEN

8. EXIST.

