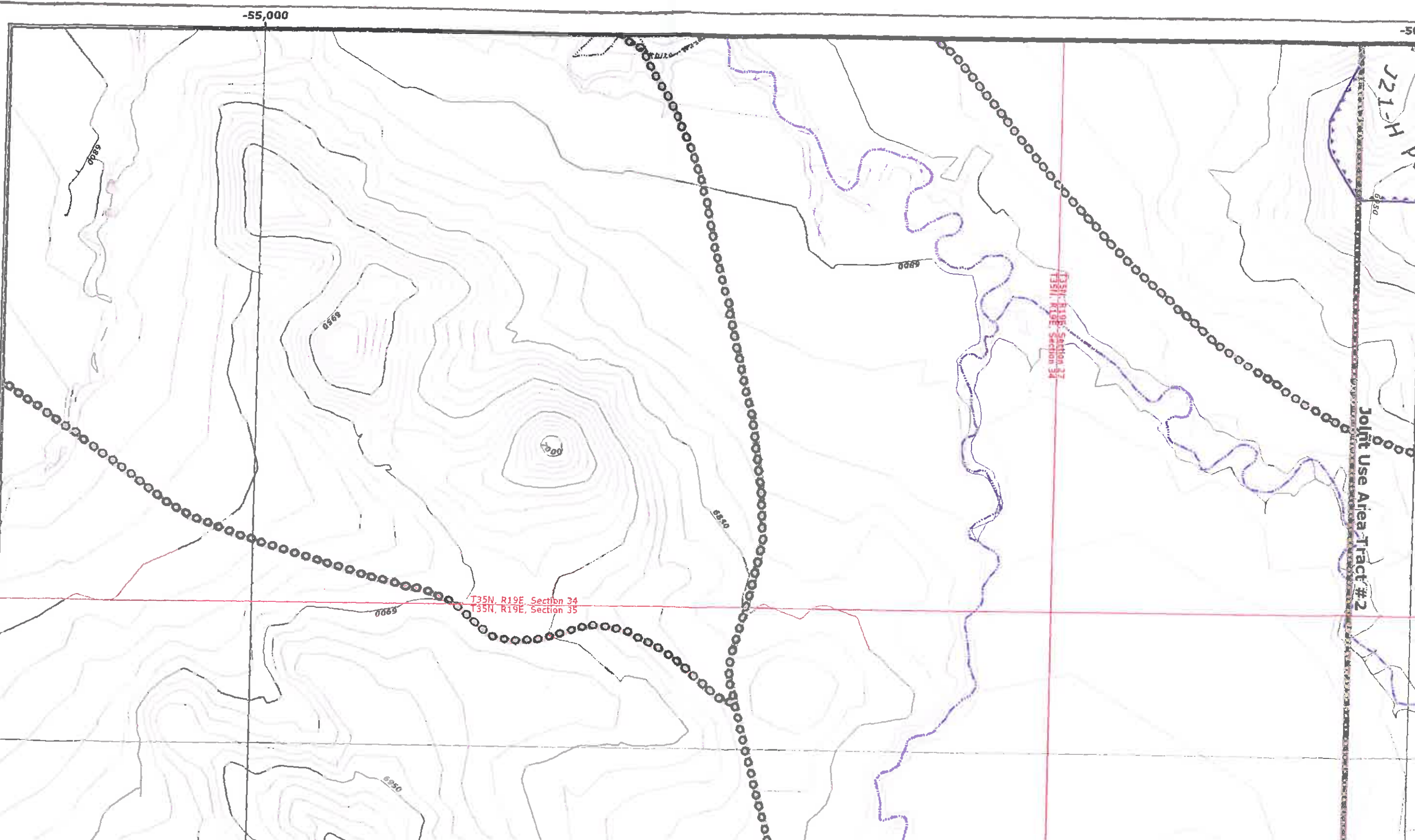


J21-H P

Joint Use Area Tract #2



### ENGINEER'S CERTIFICATION



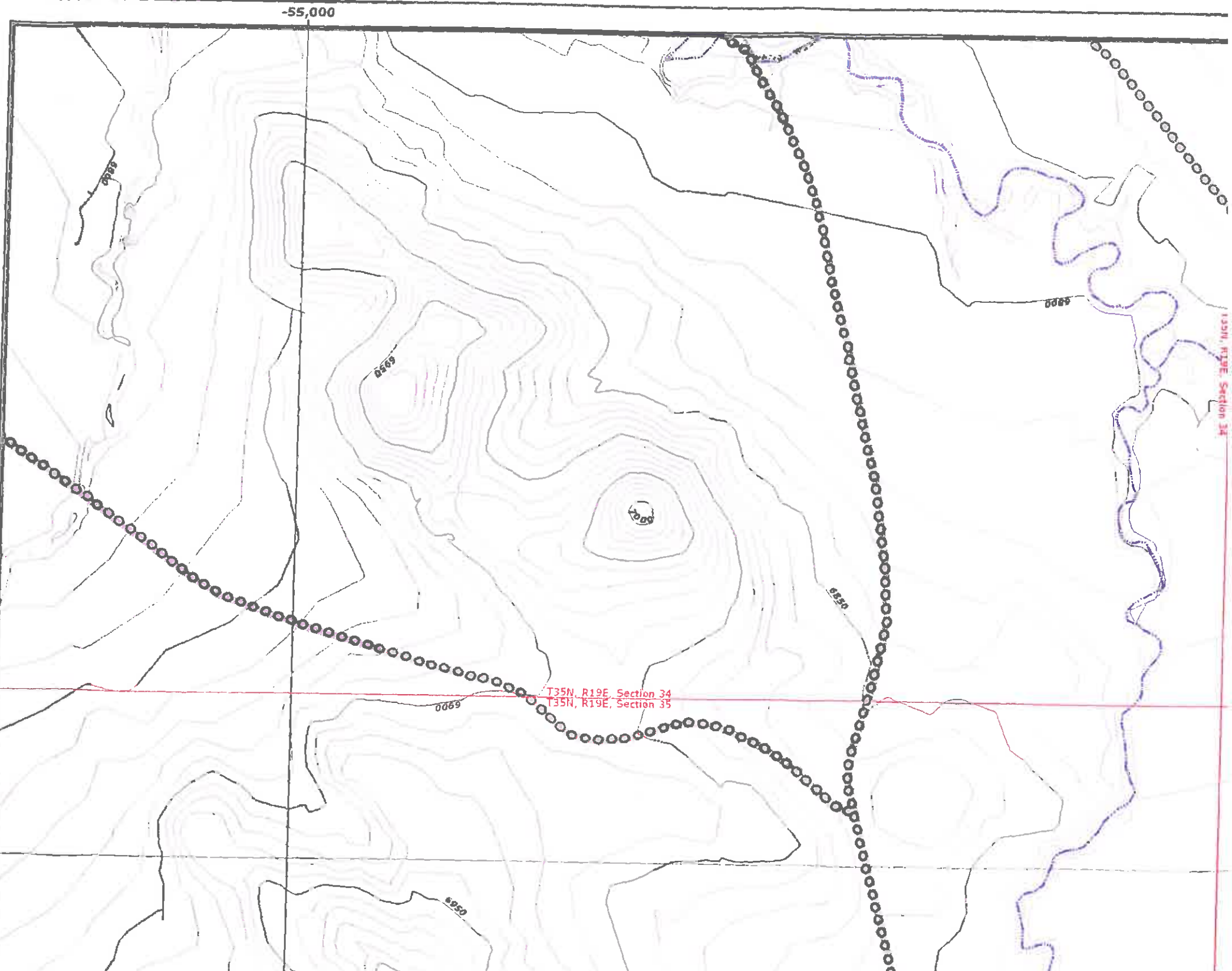
### MAP REVISIONS

CHK'D	DATE	DESCRIPTION
JGS	Aug 15, 2004	DSM Response
JGS	Jan 14, 2005	NOI 5 Year Mitigation Plan
JGS	Jun 15, 2005	NOI Facilities Review
JGS	Sep 10, 2005	NOI & NOI Facilities Revision
JGS	Dec 15, 2005	NOI Sequence Revision
JGS	Jan 20, 2006	OSM Response
JGS	Feb 4, 2006	NOI Road As-Built Response
JGS	Feb 24, 2006	NOI Facilities Revision
GW	Apr 12, 2006	TCPE and Roads Revision

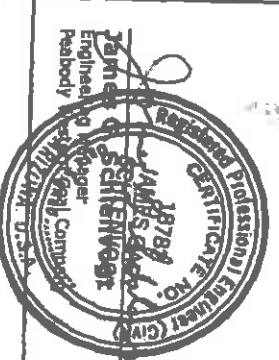
65,000

### 85400 NOTES:

1. SEE DRAWING NO. 85
2. SEE DRAWING NO. 85 OF THESE STRUCTURE
3. SEE DRAWING NO. 85
4. SEE DRAWING NO. 93 MONITORING SITES.
5. SEE CHAPTERS 6-7 AND RECLAMATION PL



**ENGINEER'S CERTIFICATION**

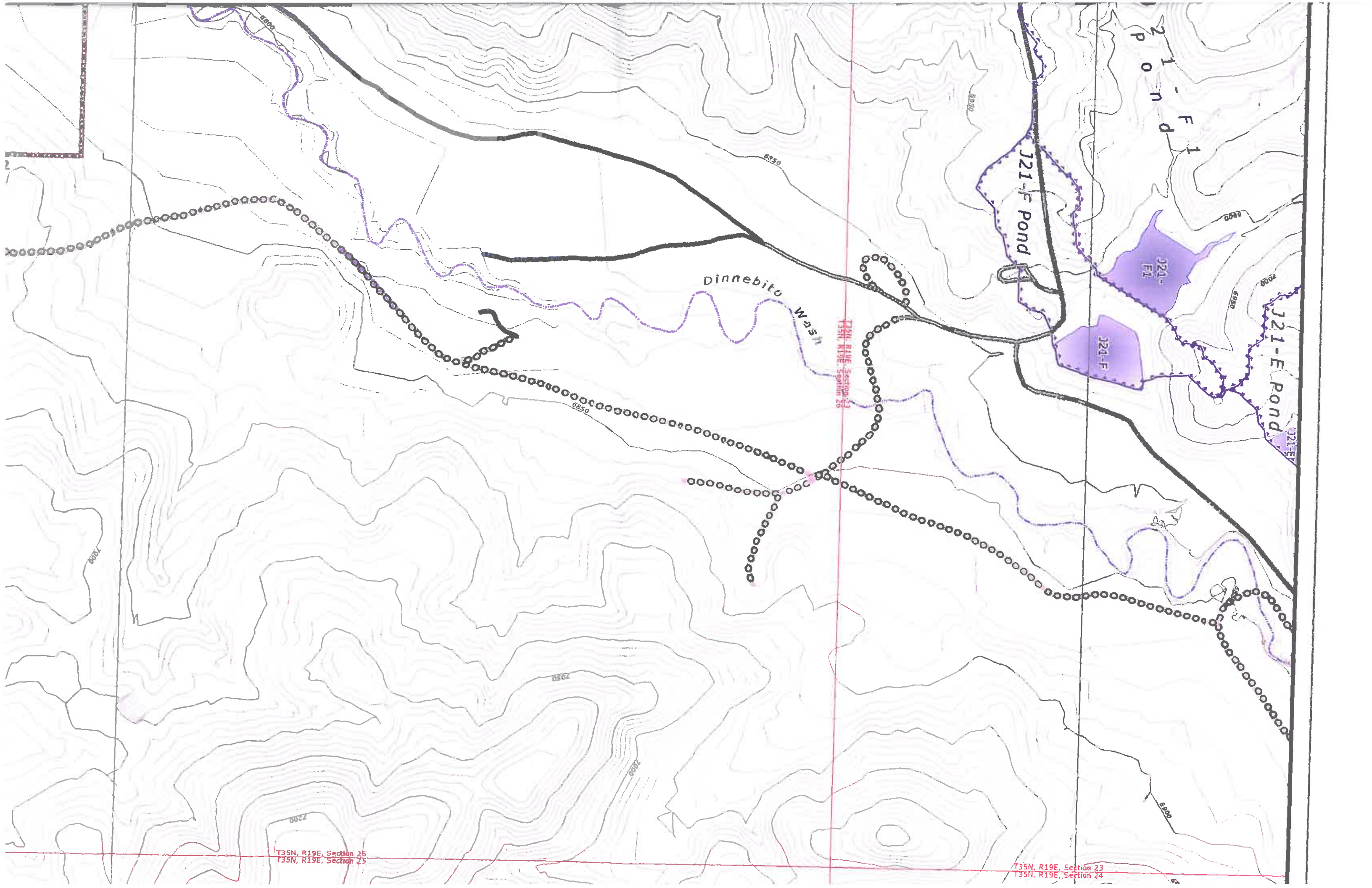


**JAN 14 2008**  
Date

CHK'D	DATE	DESCRIPTION
JGS	Aug 15, 2004	OSM Response
JGS	Jan 14, 2005	NO9 5 Year Milespahn Rev
JGS	Jun 15, 2005	NO9 Facilities Revision
JGS	Sep 30, 2005	NO9 A, NO8 Facilities Revision
JGS	Dec 15, 2005	NO9 Sequence Revision
JGS	Jan 20, 2006	OSM Response
JGS	Feb 4, 2006	NO8 Road Ac-Build Response
JGS	Feb 24, 2006	NO9 Facilities Revision
GW	Apr 12, 2006	TCPs and Roads Revision
JGS	May 9, 2006	NO9 Road Ac-Build
JGS	Jul 12, 2006	Airport Rd / WW 6 Waterline Revision
JGS	Aug 30, 2006	Road Alignment Revision
JGS	Dec 21, 2007	Subarea Symbols / Mile-wide Buffer Symbols

**65,000**

- 65400 NOTES:**
1. SEE DRAWING NO. 85
  2. SEE DRAWING NO. 85 OF THESE STRUCTURE
  3. SEE DRAWING NO. 85.
  4. SEE DRAWING NO. 93: MONITORING SITES.
  5. SEE CHAPTERS 6-7 AN AND RECLAMATION PL.
- \*DRAINAGE DIRECTION C MSHA SAFETY BERM EXT. \*PRIMARY ROADS HAVE E AS DESIGNED AND IN AC**



J21-F1 Pond

J21-F Pond

J21-E Pond

Dinnebita Wash

T35N, R19E, Section 26

T35N, R19E, Section 26  
T35N, R19E, Section 25

T35N, R19E, Section 23  
T35N, R19E, Section 24

7000

6800

6850

6950

6900

7000

6950

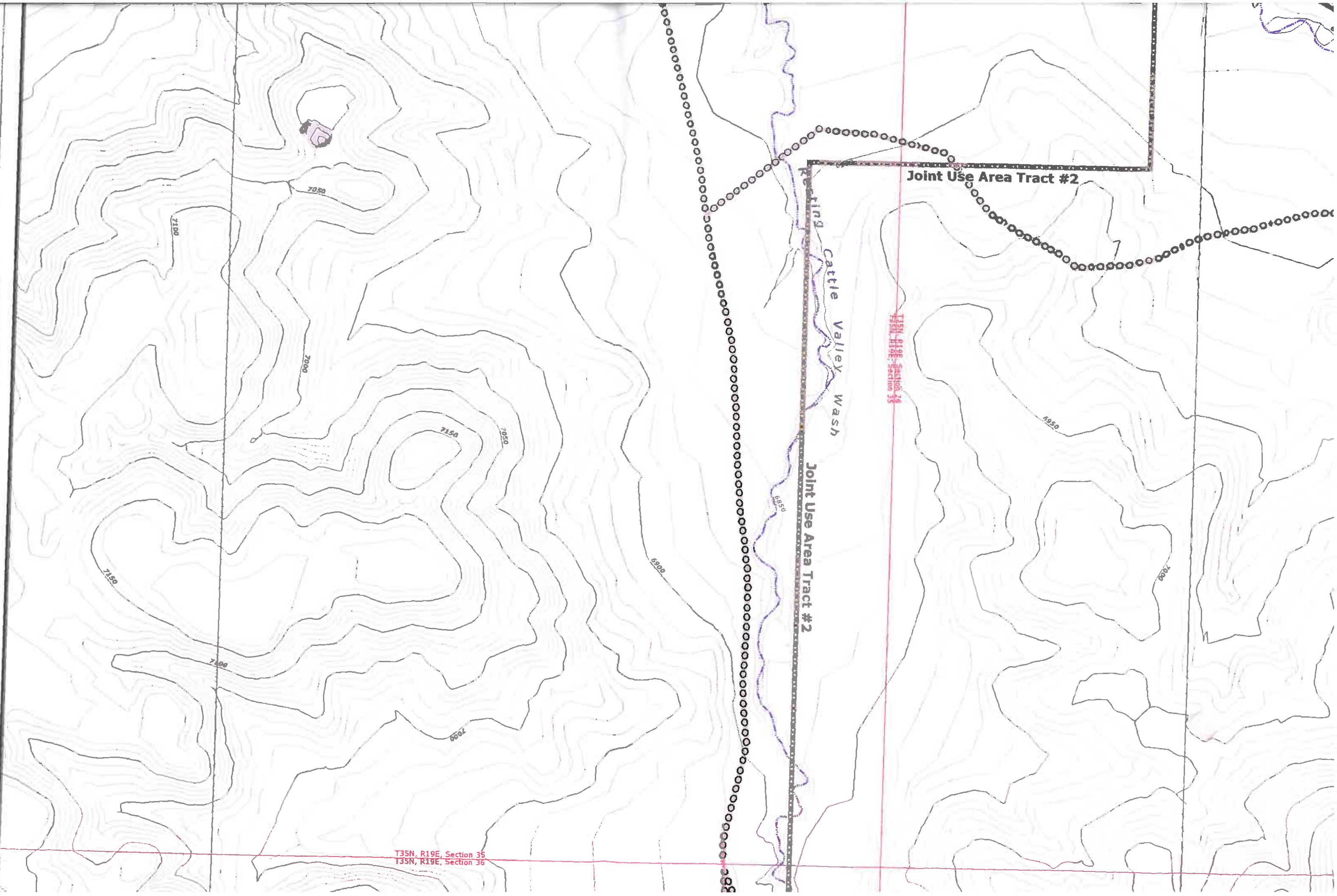
6850

7050

7000

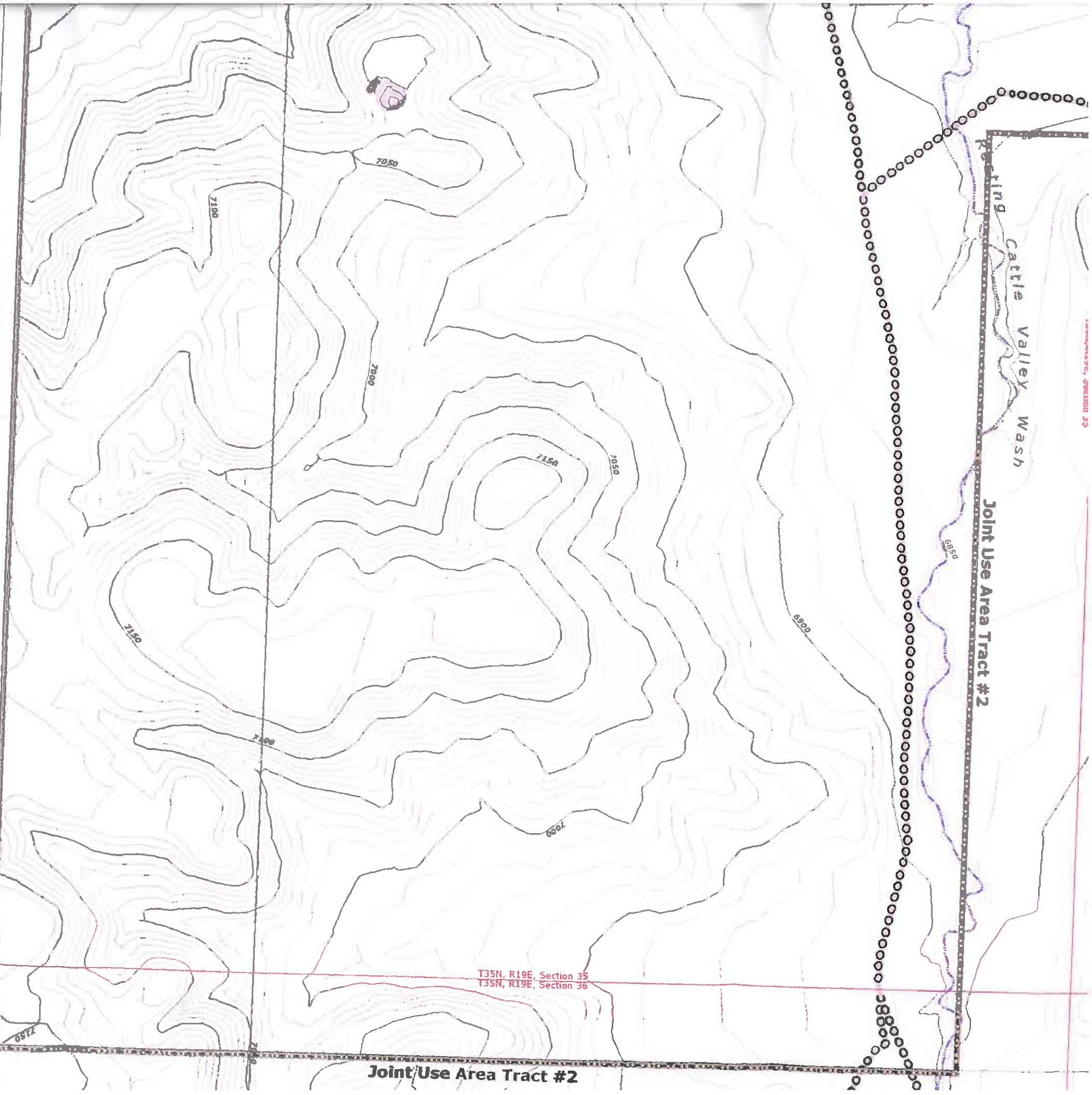
7200

6900



T35N, R19E, Section 29  
T35N, R19E, Section 35

T35N, R19E, Section 35  
T35N, R19E, Section 36



Resting Cattle Valley Wash

Joint Use Area Tract #2

6950

6900

7050

7000

7050

7000

7100

7150

T35N, R19E, Section 35  
T35N, R19E, Section 36

Joint Use Area Tract #2

70,000

THE MINING AFFECTED LANDS,  
THE GENERAL LOCATION  
FOR THE MINE SUPPORT FACILITIES MAP,  
THE LOCATION OF THE ENVIRONMENTAL  
FOR INFORMATION ON THE FACILITIES  
EMBANKMENTS ONLY APPLY WHEN  
CONSTRUCTED OR RECONSTRUCTED  
WITH THE APPROVED PLAN.

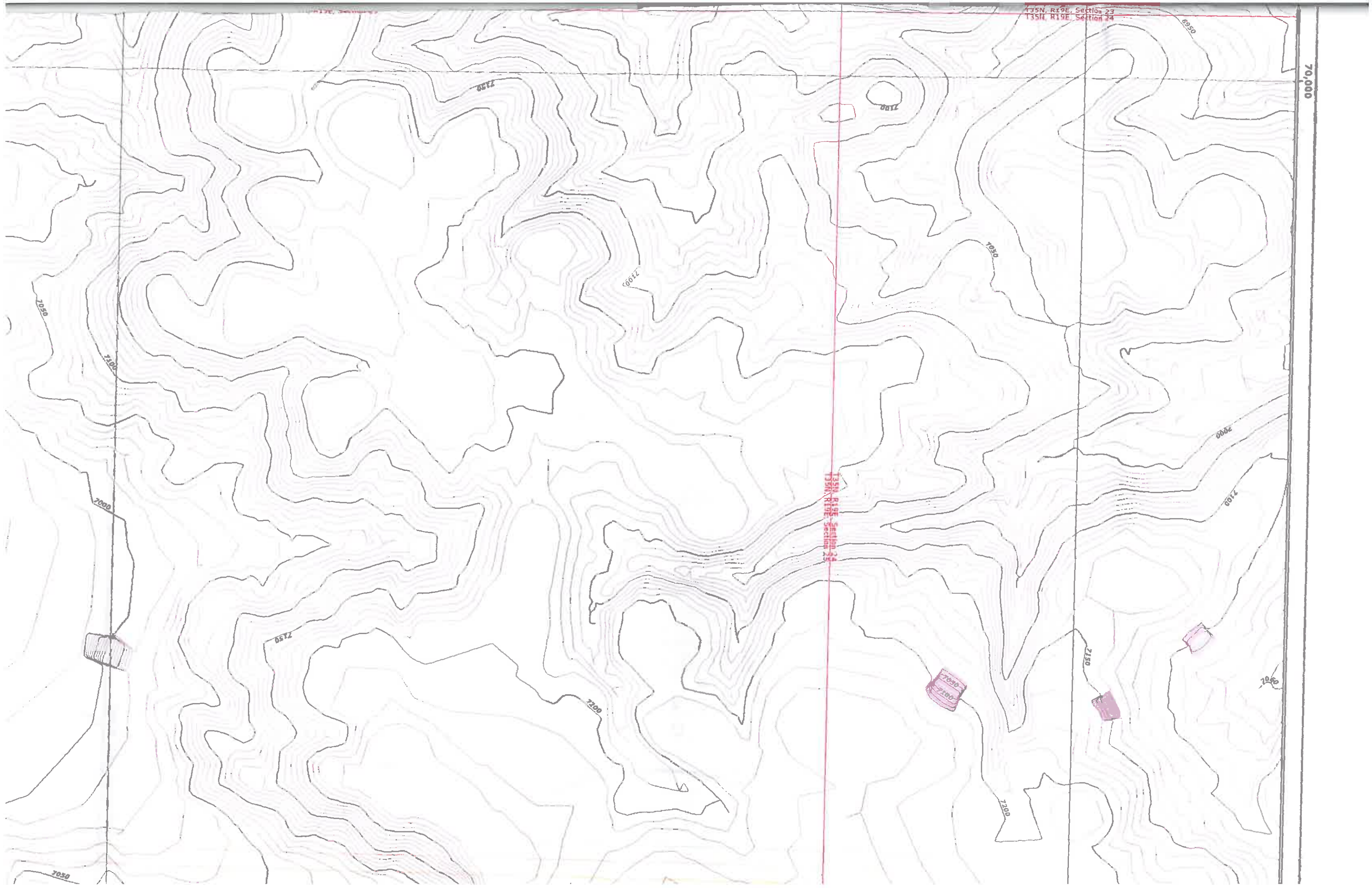


**Water Impoundment Features**

- Existing
- Proposed
- Reclaimed
- Impoundment/SAE Watershed Boundary

**Mine Area Facilities and Structures**

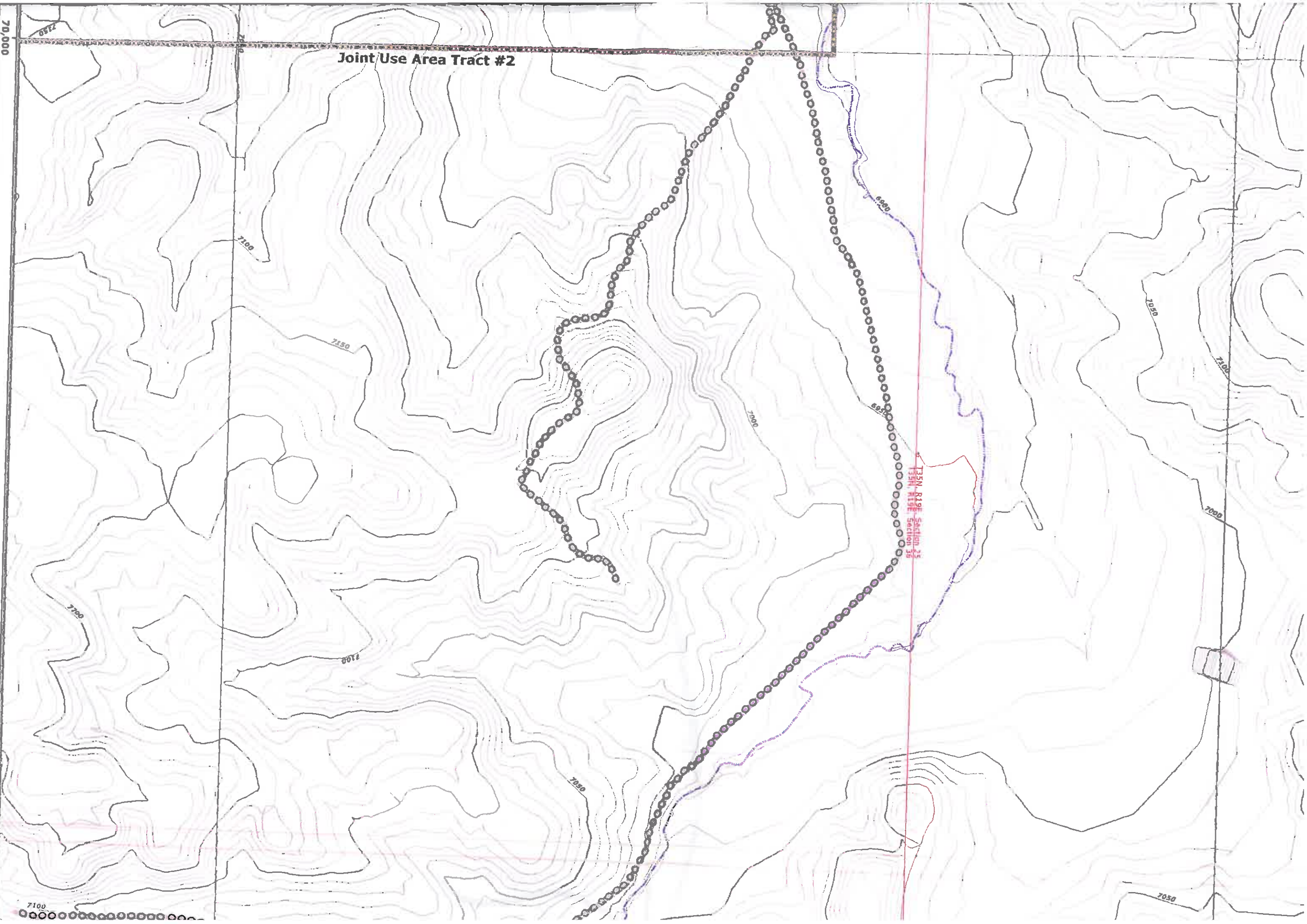
- PWCC Powerline
- Non-PWCC Powerline
- Coal Stockpile
- Scoria Pit
- Explosives Storage
- PWCC Buildings and Structures
- Non-PWCC Buildings and Structures



Joint Use Area Tract #2

70,000

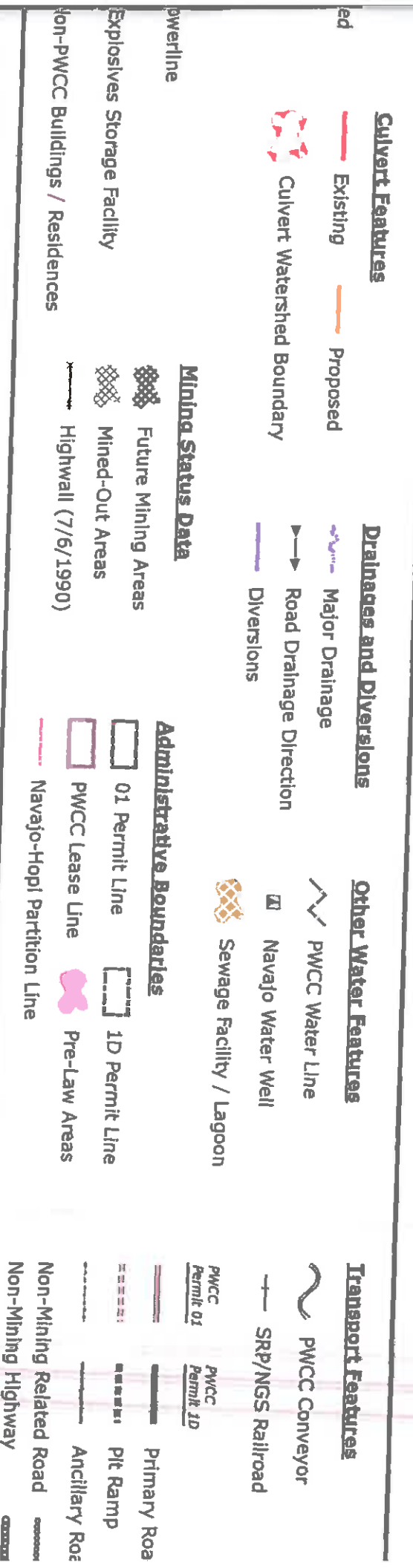
- Culvert Features**
  - Existing
  - Proposed
  - Culvert Watershed Boundary
- Drainages and Diversions**
  - Major Drainage
  - Road Drainage Direction
  - Diversions
- Other Water Features**
  - PWCC Water Line
  - Navajo Water Well
- Transport Features**
  - PWCC Conveyor
  - SRP/NGS Railroad

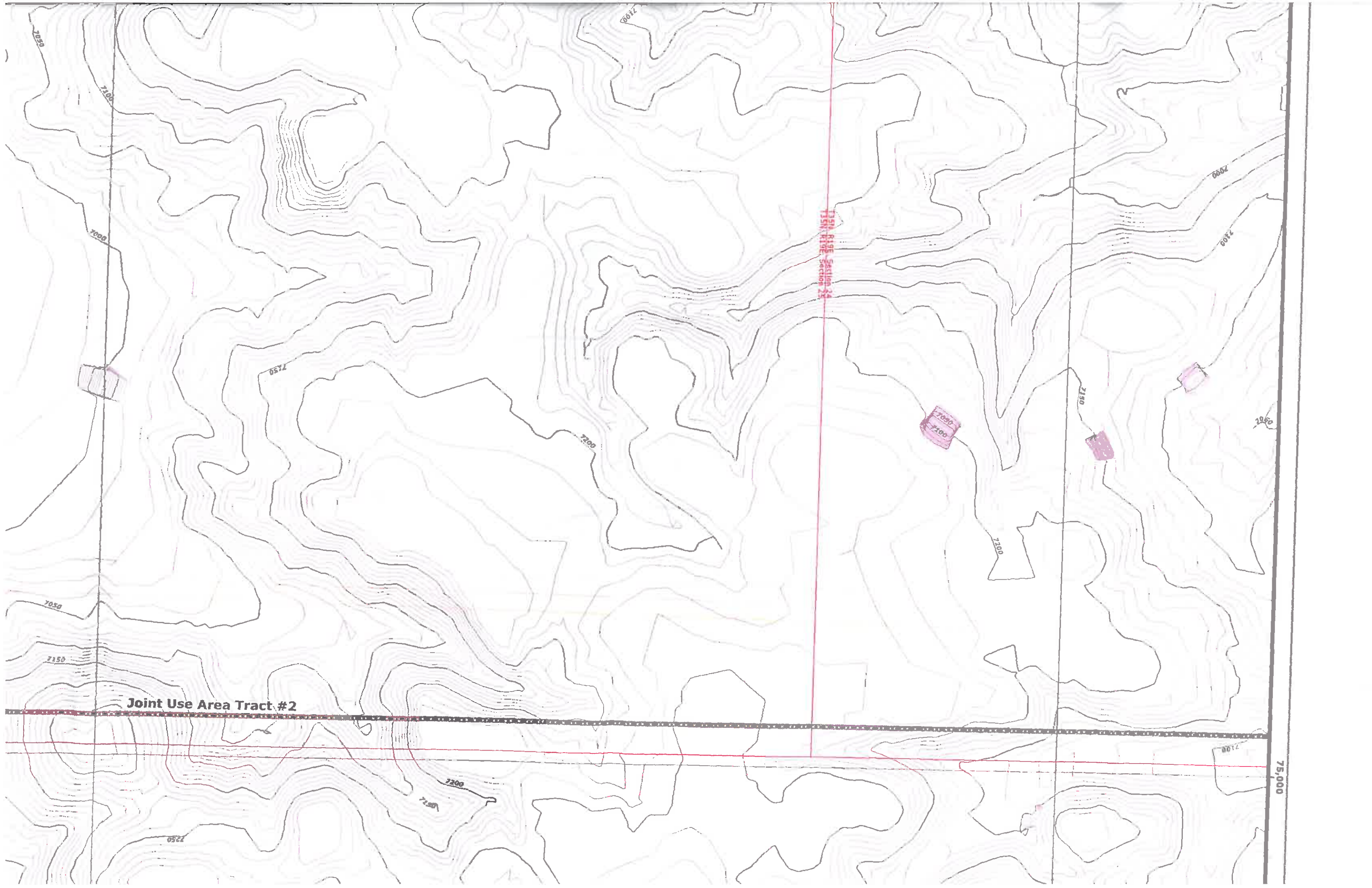


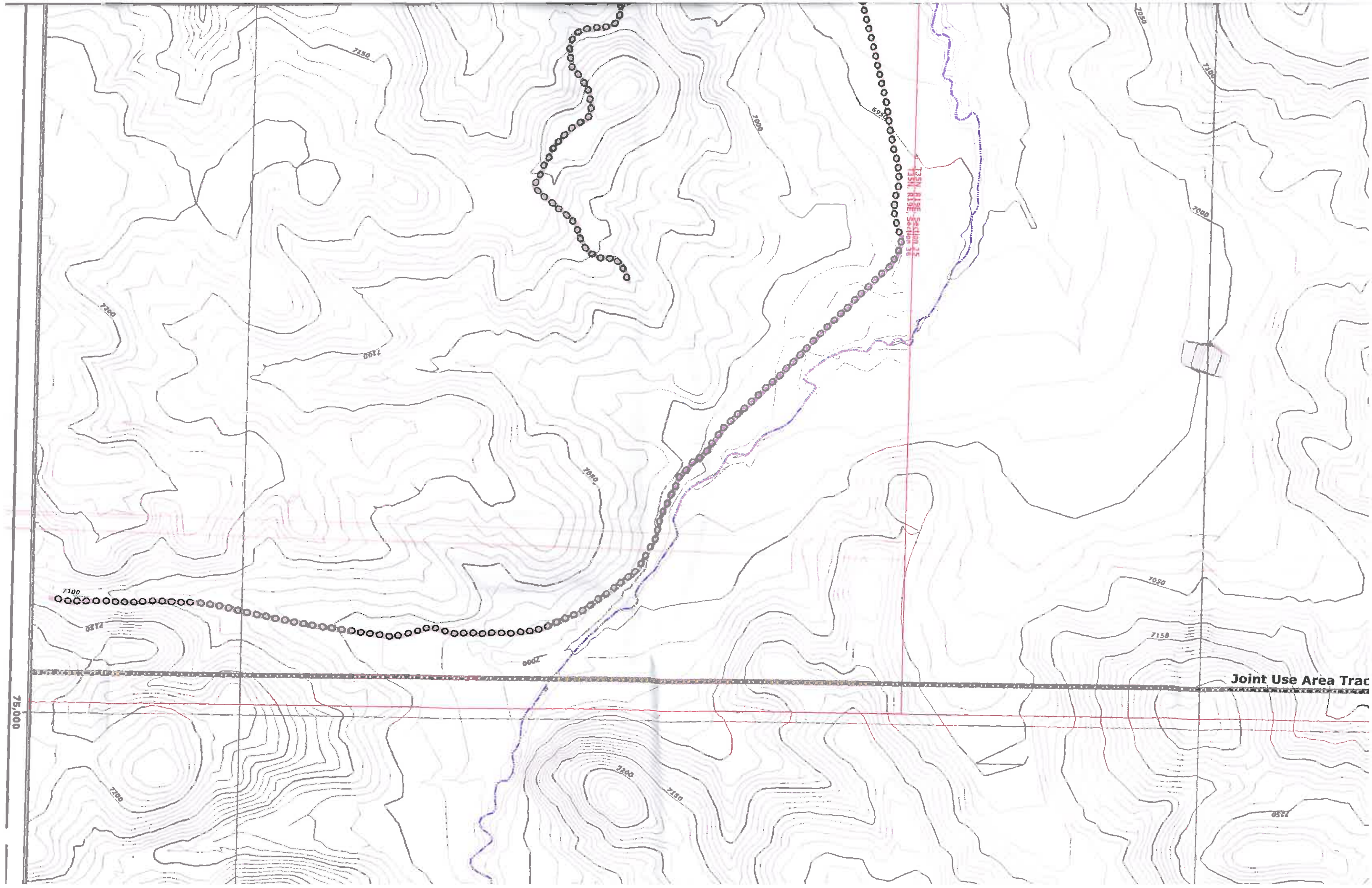




135W RIPE Section 35  
135W RIPE Section 36







135N, R19E, Section 25  
135N, R19E, Section 36

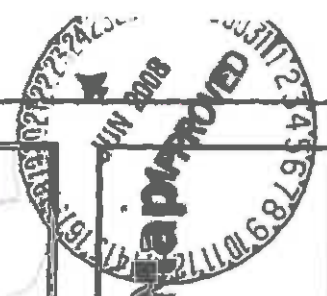
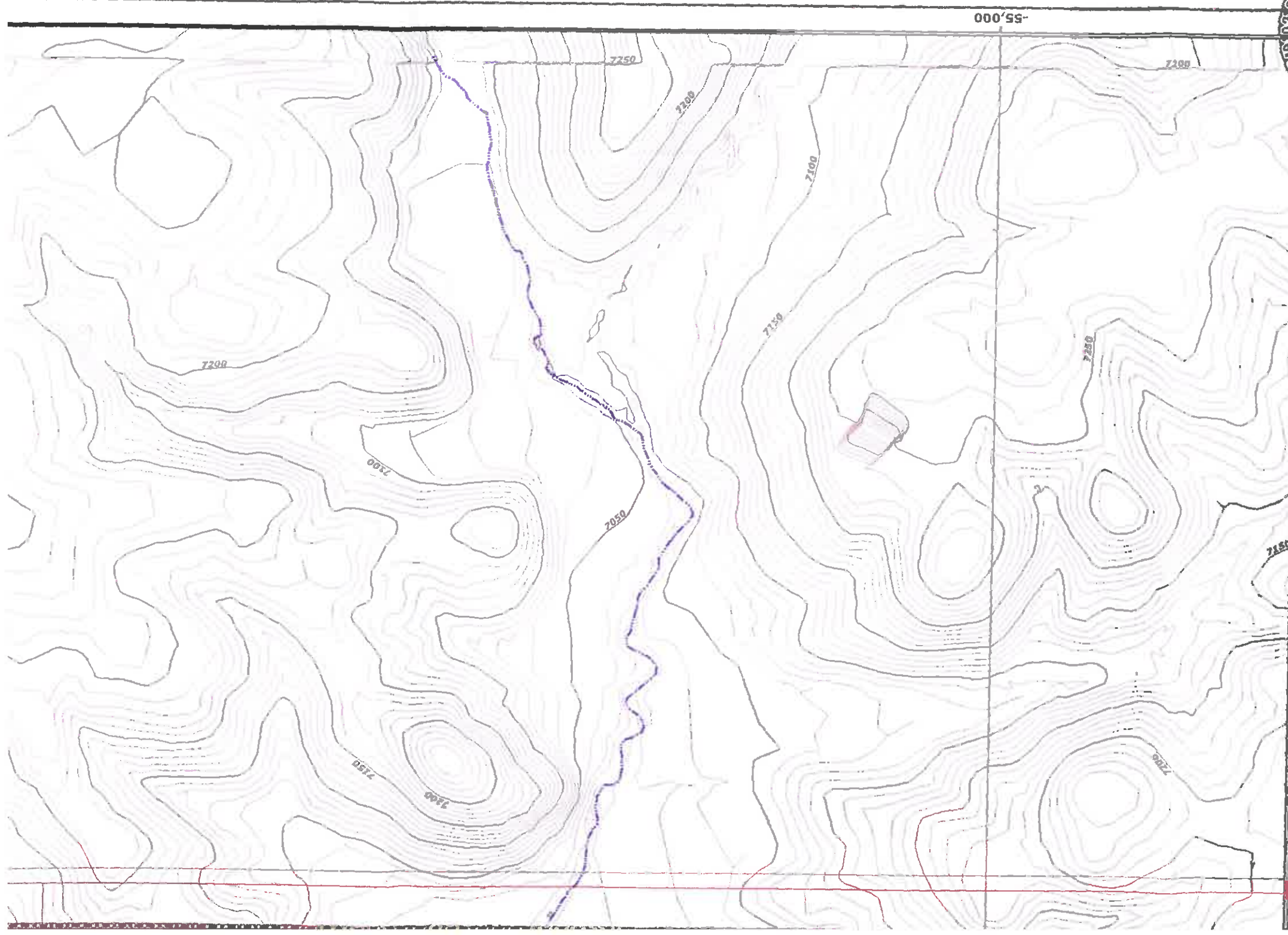
Joint Use Area Trac

75,000



<b>Drainages and Diversions</b>		<b>Other Water Features</b>		<b>Transport Features</b>		<b>BTCA Features</b>	
Major Drainage	Road Drainage Direction	PWCC Water Line	Navajo Water Well	PWCC Conveyor	SRP/NGS Railroad	Riprap Rock	Rock Checkdam
Diversions	Sewage Facility / Lagoon	PWCC Permit 01	PWCC Permit 1D	Primary Road	Pit Ramp	Silt Fence	Straw Bales
<b>Administrative Boundaries</b>		<b>Administrative Boundaries</b>		<b>Administrative Boundaries</b>		<b>Revegetated Areas</b>	
Mining Areas	PWCC Lease Line	01 Permit Line	1D Permit Line	Non-Mining Related Road	Ancillary Road	Revegetated Areas	SPCC Point Feature
In-Out Areas	Navajo-Hopi Partition Line			Non-Mining Highway			
Call (7/6/1990)							





# Drainage Area and Facilities Map

## Drawing #85400

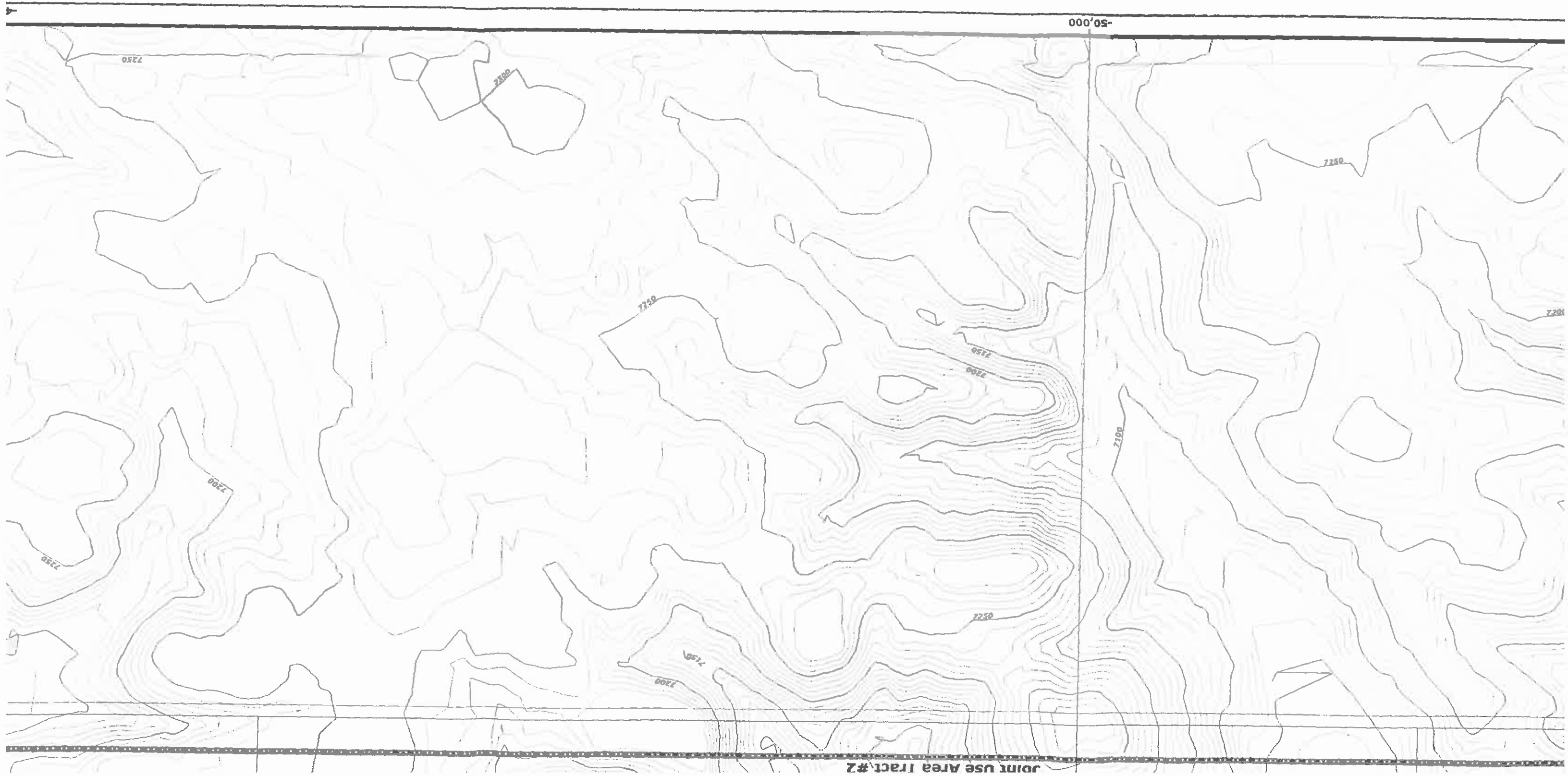
### Sheet N11

Produced by PWCC GIS  
 Jan 10, 2008

0 100 200 400 Feet  
 1 Inch = 400 Feet  
 10 foot Interval  
 Indexes at 50 feet

**PEABODY WESTERN**  
 Black Mesa Complex  
 PO Box 450  
 Kayenta, Arizona 86033

- BICA Features**
- Riprap Rock
  - Rock Checkdam
  - Silt Fence
  - Straw Bales
- Revegetated Areas**
- ▼ SPCC Point Feature



JOINT USE AREA TRACT #2

