

-35,000

J19-RB

J19-RB
Pond

T35N, R19E, Section 10
T35N, R19E, Section 15

T35N, R19E, Section 10
T35N, R19E, Section 14

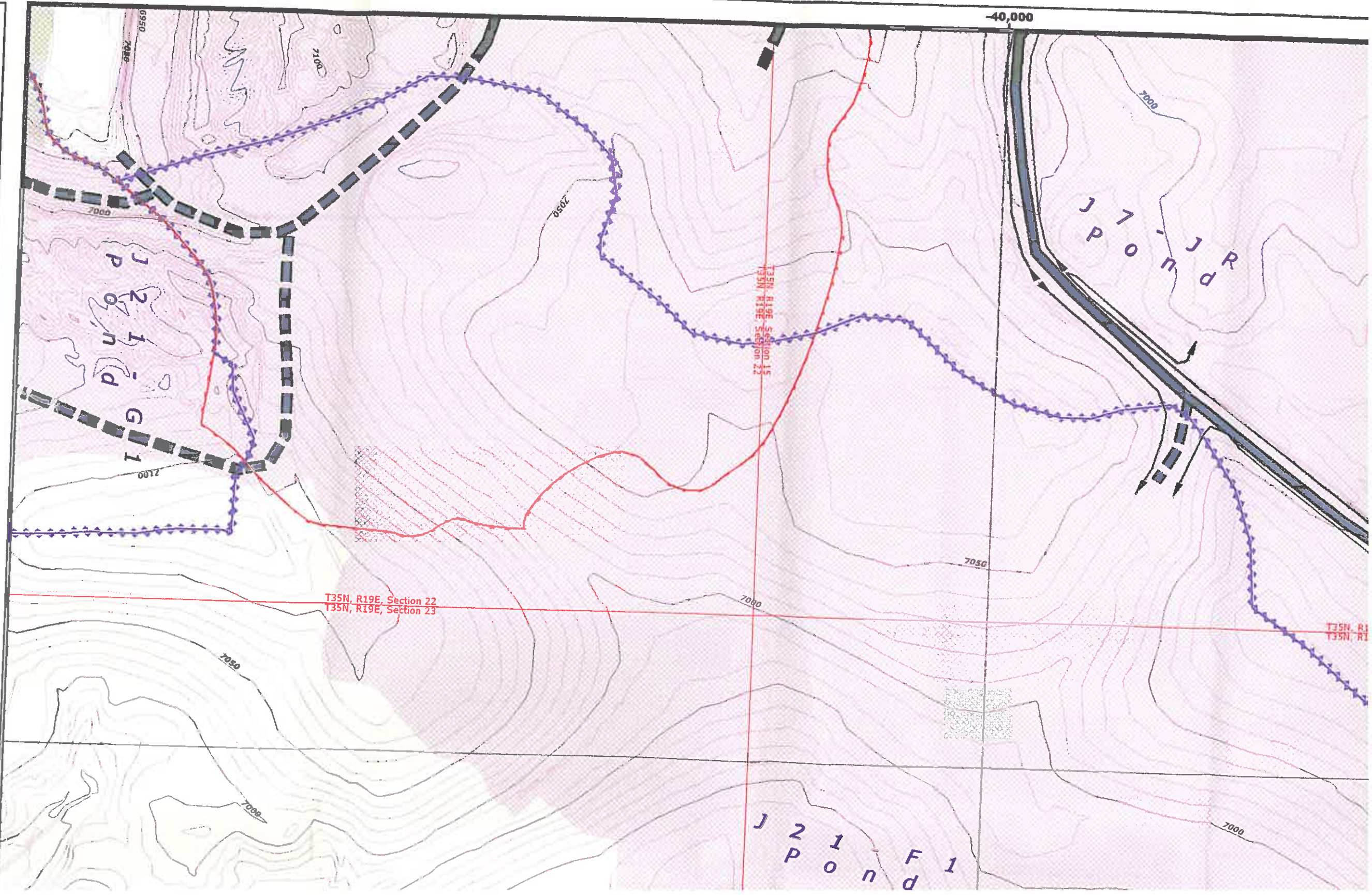
T35N, R19E, Section 15
T35N, R19E, Section 14

Highway (7-6-90)
7000

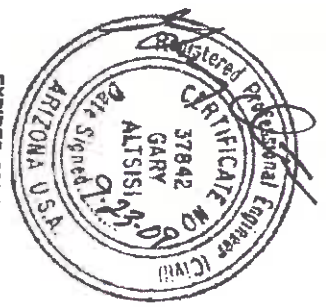
Highway (7-6-90)
7000

J19-RB
Pond

65,000



ENGINEER'S CERTIFICATION



Gary Altsisl P.E.
 Reclamation Supervisor
 Peabody Western Coal Company

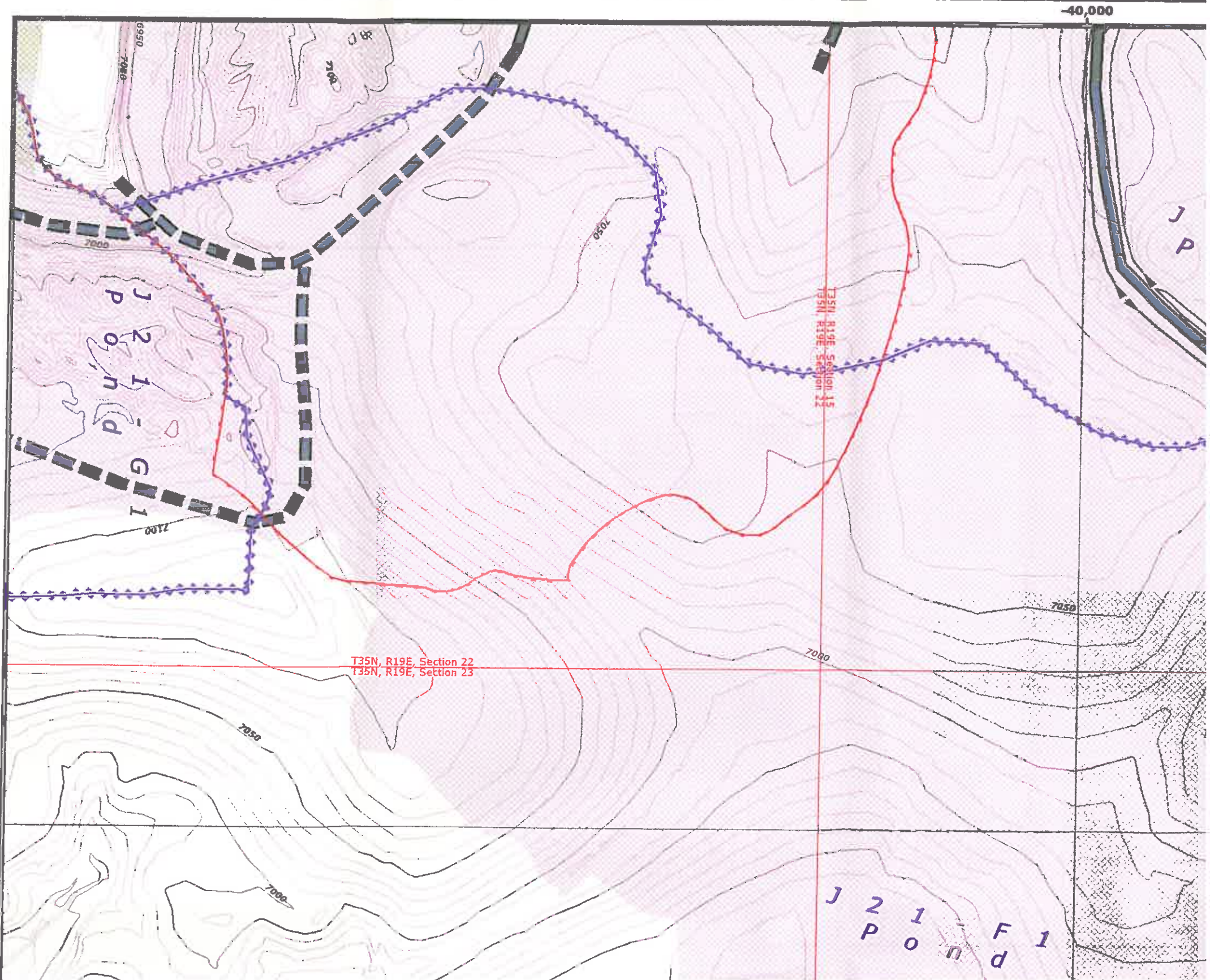
EXPIRES: 09/20/11

85400 NOTES:

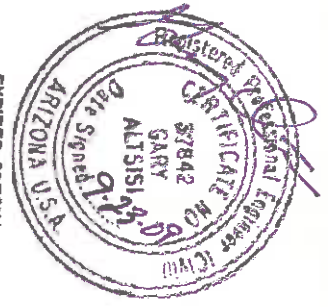
1. SEE DRAWING NO. 85360 FOR THE MINING AFFECTED LANDS.
2. SEE DRAWING NO. 85405 FOR THE GENERAL LOCATION OF THESE STRUCTURES.
3. SEE DRAWING NO. 85460-85490 FOR THE MINE SUPPORT FACILITIES MAP.
4. SEE DRAWING NO. 93500 FOR THE LOCATION OF THE ENVIRONMENTAL MONITORING SITES.
5. SEE CHAPTERS 6-7 AND 20-26 FOR INFORMATION ON THE FACILITIES AND RECLAMATION PLAN.

65,000

"DRAINAGE DIRECTION ON FILL EMBANKMENTS ONLY APPLY WHEN MSHA SAFETY BERM EXISTS".
 "PRIMARY ROADS HAVE BEEN CONSTRUCTED OR RECONSTRUCTED AS DESIGNED AND IN ACCORDANCE WITH THE APPROVED PLAN."



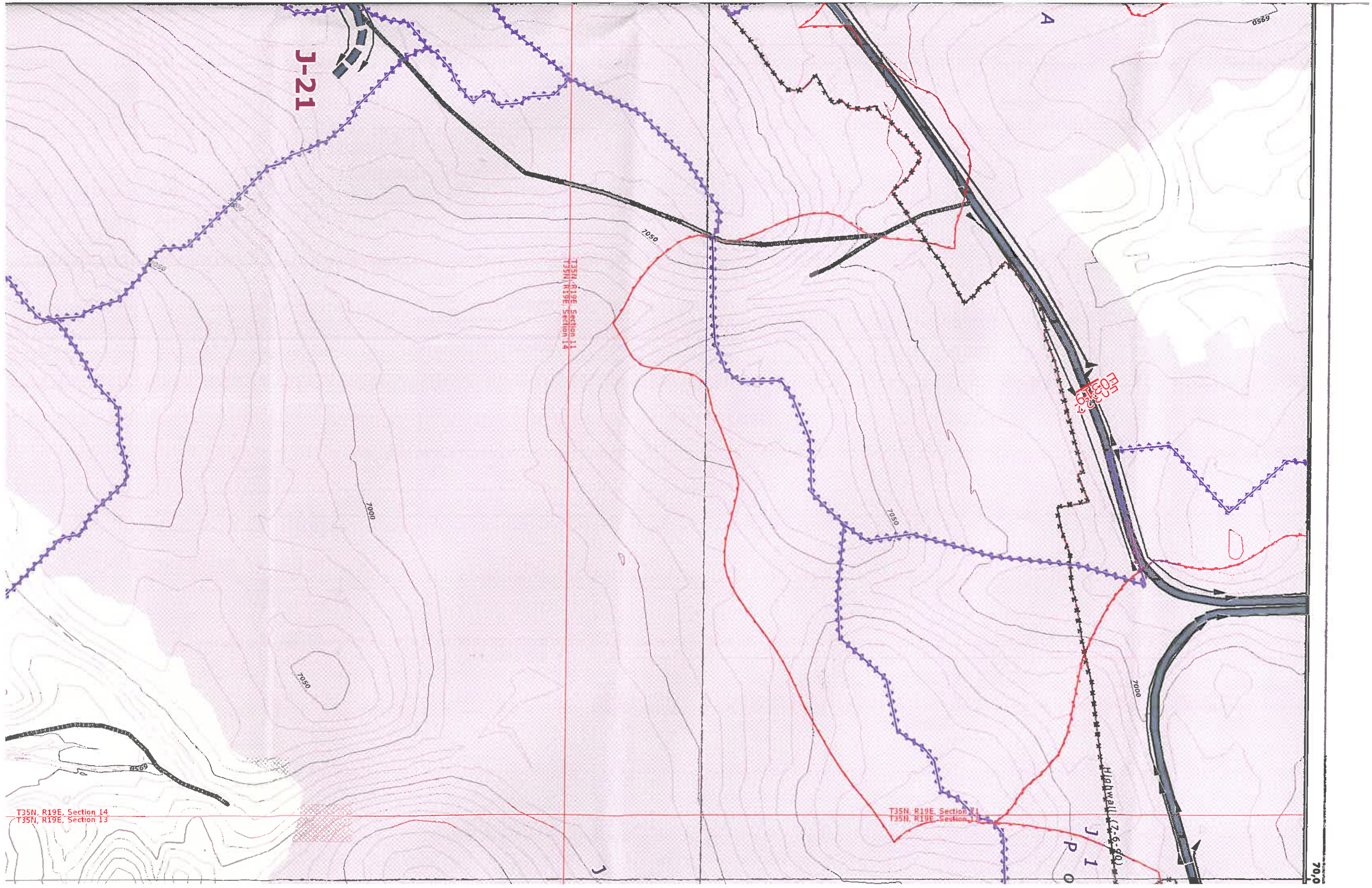
ENGINEER'S CERTIFICATION



EXPIRES: 09/30/11

Gary Altsiel P.E.
 Reclamation Supervisor
 Peabody Western Coal Company

- 85400 NOTES:**
1. SEE DRAWING NO. 85360 FOR THE MINING AFFECTED LANDS.
 2. SEE DRAWING NO. 85405 FOR THE GENERAL LOCATION OF THESE STRUCTURES.
 3. SEE DRAWING NO. 85460-85490 FOR THE MINE SUPPORT FACILITIES MAP.
 4. SEE DRAWING NO. 93500 FOR THE LOCATION OF THE ENVIRONMENTAL MONITORING SITES.
 5. SEE CHAPTERS 6-7 AND 20-26 FOR INFORMATION ON THE FACILITIES AND RECLAMATION PLAN.
- "DRAINAGE DIRECTION ON FILL EMBANKMENTS ONLY APPLY WHEN MSHA SAFETY BERM EXIST".
- "PRIMARY ROADS HAVE BEEN CONSTRUCTED OR RECONSTRUCTED AS DESIGNED AND IN ACCORDANCE WITH THE APPROVED PLAN."



J-21

T35N, R19E, Section 11
T35N, R19E, Section 14

A

E03319

T35N, R19E, Section 11
T35N, R19E, Section 13

Highway (2.5-6.00)

J
P
O

T35N, R19E, Section 14
T35N, R19E, Section 13

7050

7000

7050

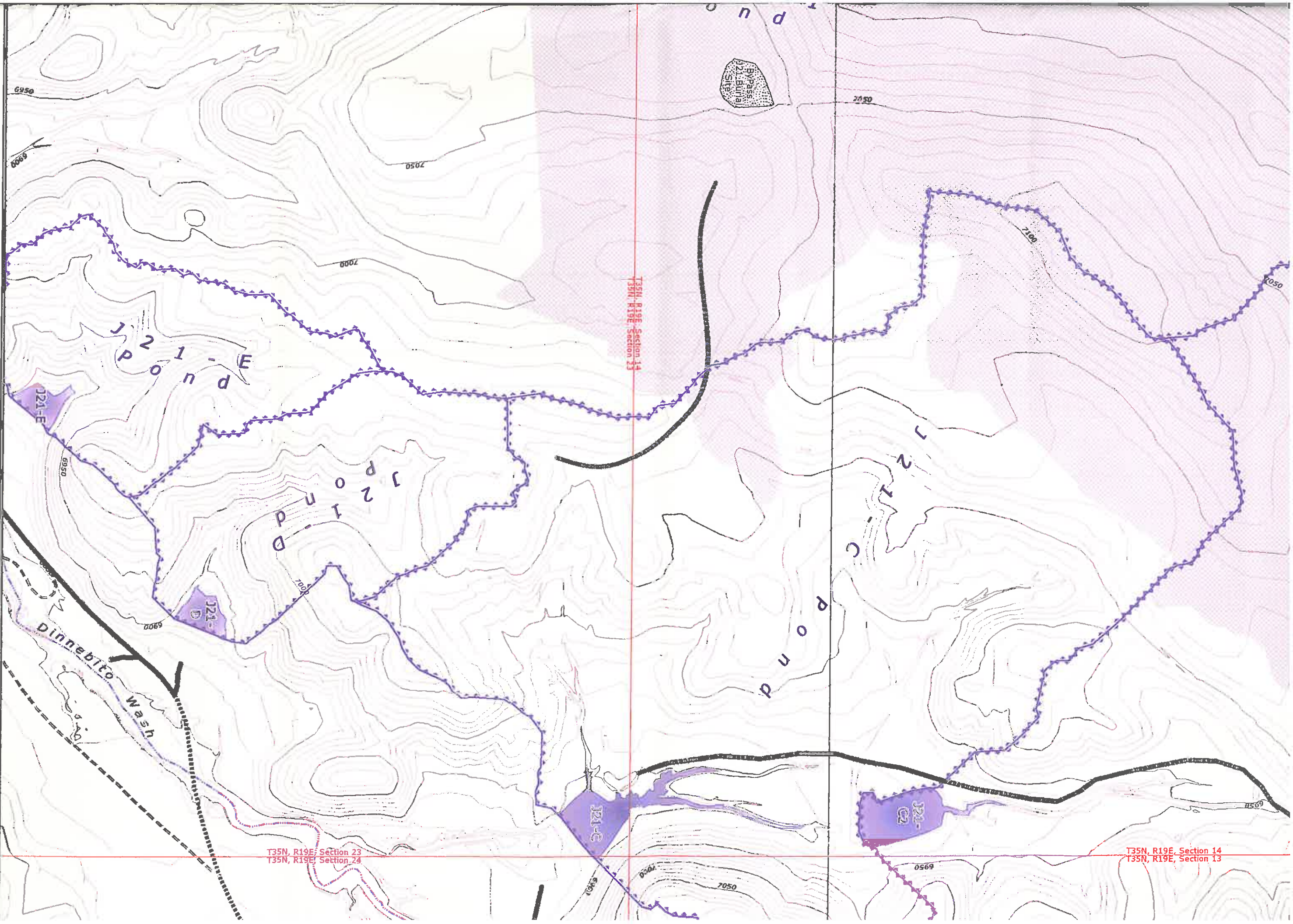
7050

7000

7000

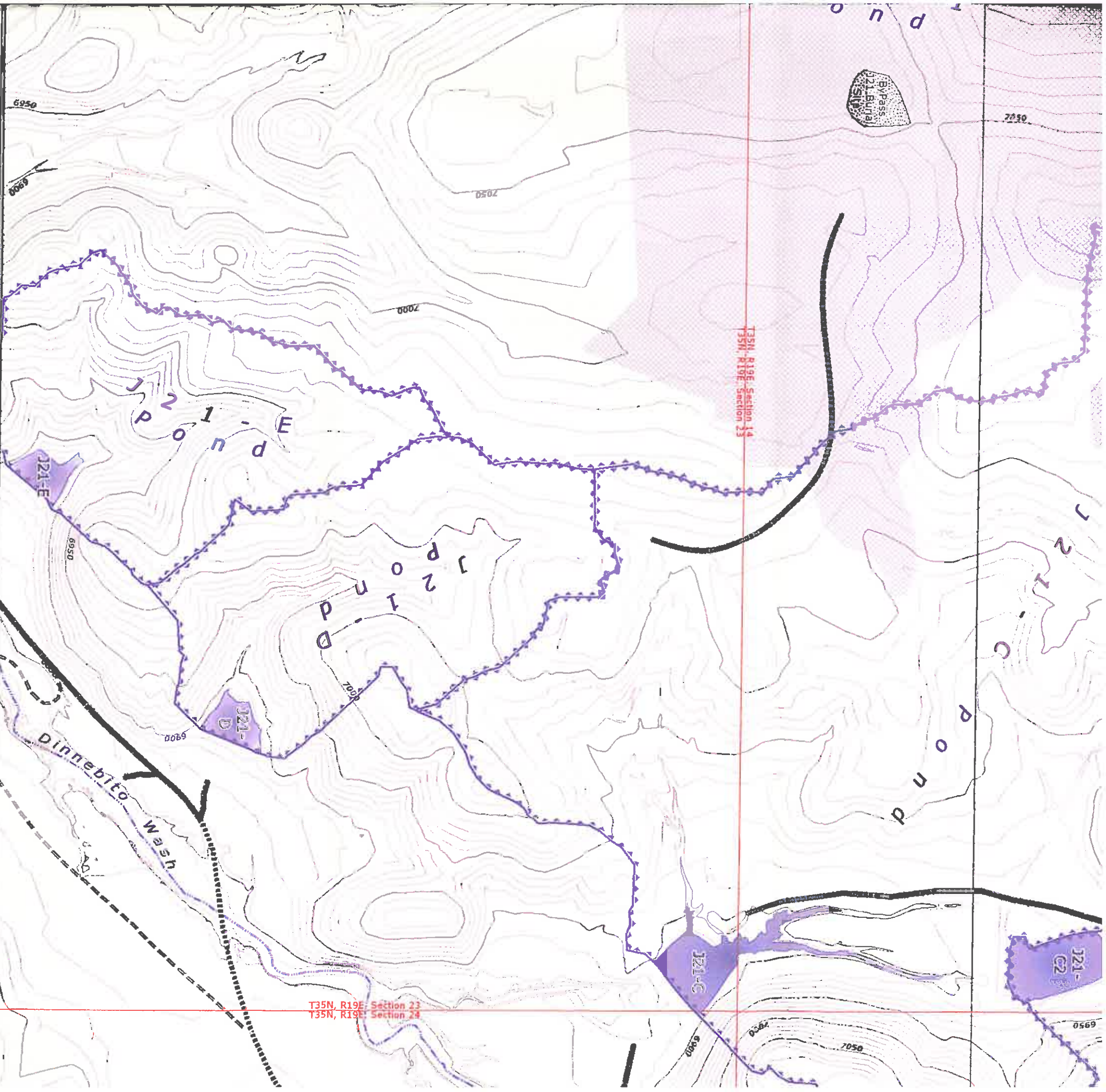
6950

- Water Impoundment Features**
 - Existing
 - Proposed
 - Reclaimed
- Culvert Features**
 - Existing
 - Proposed
- Drainages and Diversions**
 - Major Drainage
 - Road Drainage Direction
 - Diversions
- Other Water F**
 - PWCC W
 - Navajo W
 - Sawana I
- Impoundment/SAE Watershed Boundary**
- Culvert Watershed Boundary**

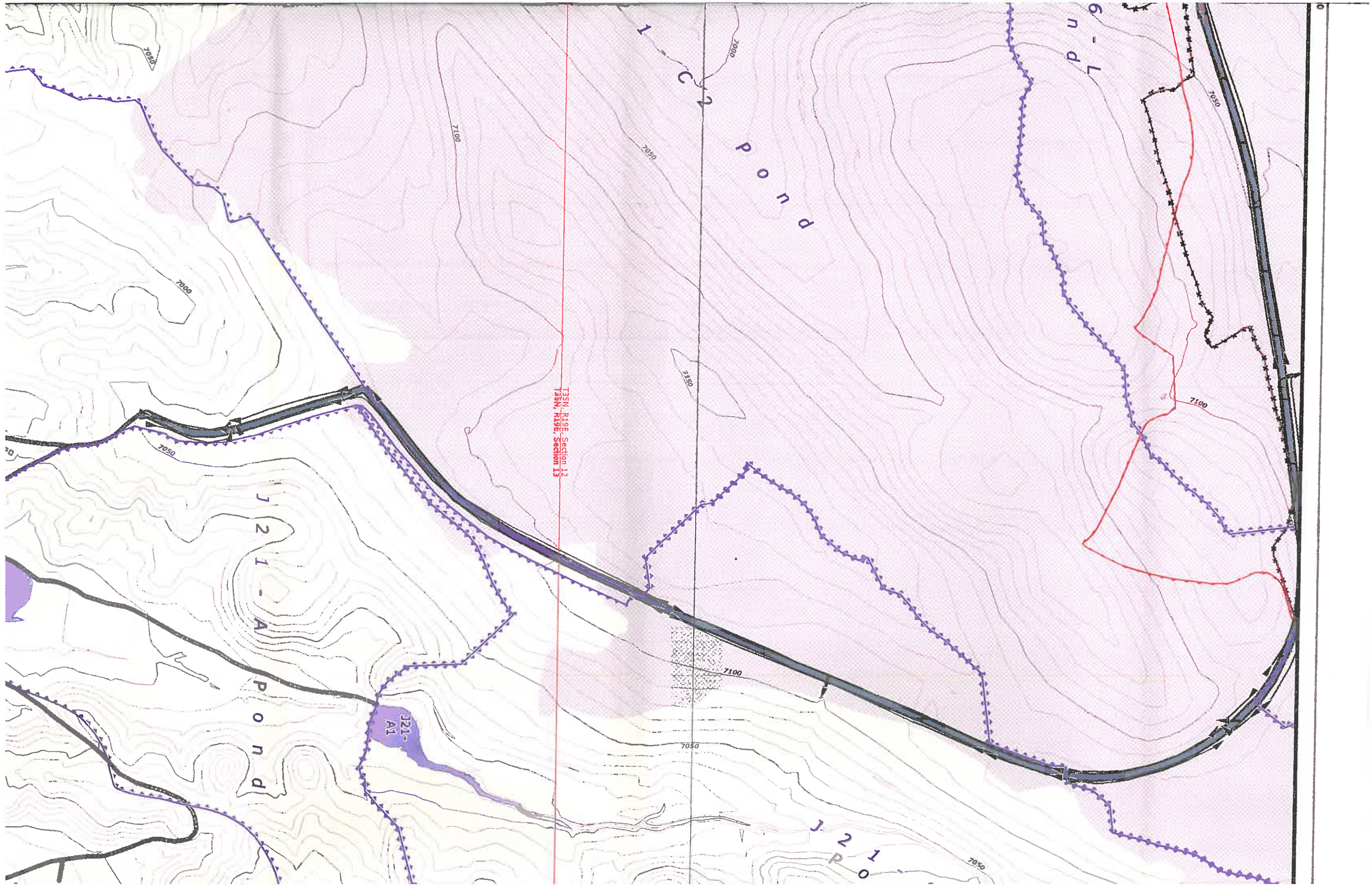


T35N, R19E, Section 14
T35N, R19E, Section 13

T35N, R19E, Section 23
T35N, R19E, Section 24



- | | | | | | | | |
|--|------------------------------------|-----------------------------------|---------------------------------|---------------------------------|-------------------------|----------------------------------|----------------------------|
| Water Impoundment Features | | Culvert Features | | Drainages and Diversions | | Other Water Features | |
| | Existing | | Proposed | | Major Drainage | | PWCC Well |
| | Reclaimed | | Existing | | Road Drainage Direction | | Navajo Well |
| | Impoundment/SAE Watershed Boundary | | Proposed | | Diversions | | Sewage Facility |
| Mine Area Facilities and Structures | | Culvert Watershed Boundary | | Drainage and Diversions | | Administrative Boundaries | |
| | PWCC Powerline | | Existing | | Future Mining Areas | | 01 Permit Line |
| | Non-PWCC Powerline | | Proposed | | Mined-Out Areas | | PWCC Lease Line |
| | Coal Stockpile | | Culvert Watershed Boundary | | Highwall (7/6/1990) | | Navajo-Hopi Partition Line |
| | Scoria Pit | | Explosives Storage Facility | | | | |
| | PWCC Buildings and Structures | | Non-PWCC Buildings / Residences | | | | |
| | | | Non-PWCC Buildings / Residences | | | | |



T35N, R19E, Section 12
T35N, R19E, Section 13

J21-A1

Pond

Pond

Pond

Pond

Pond

7000

7000

7050

7100

7050

7150

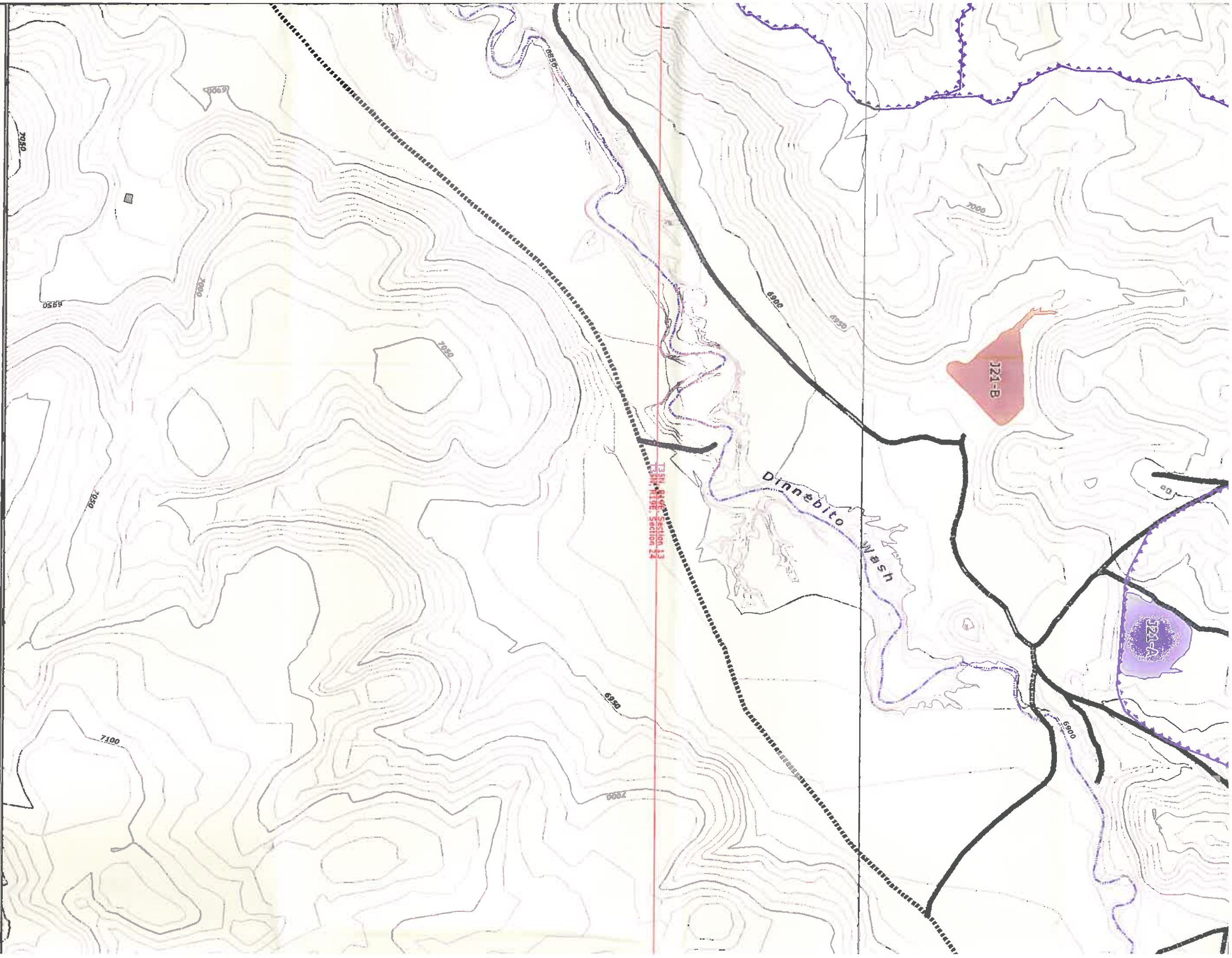
7100

7050

7050

7100

7050



Mine Transport Features

- PWCC Conveyor
- SRP/NGS Railroad
- PWCC Permit 01
- PWCC Permit 1D
- Primary Road
- Pit Ramp
- Ancillary Road

BTCA Features

- Riprap Rock
- Rock Checkdam
- Silt Fence
- Straw Bales
- Berm/Sump
- Revegetated Areas
- SPCC Point Feature

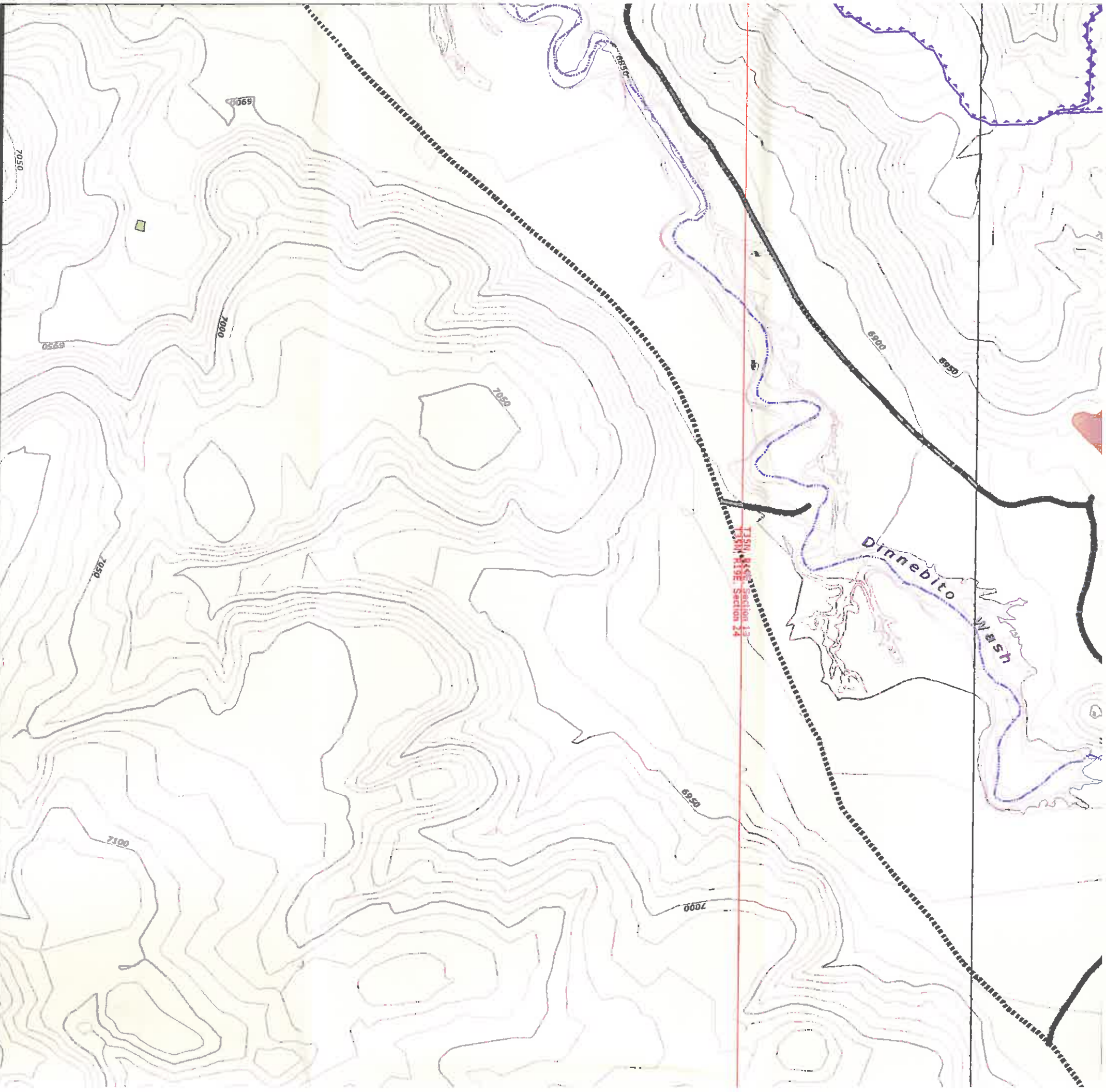
Other Features

- Line
- Well
- Utility / Lagoon
- Permit Line
- e-Law Areas

Non-mining Related Roads

- US/State Highway
- Primary Local Route
- Backfactual Road





Lines

- Line
- Per Well
- ility / Lagoon
- Permit Line
- e-Law Areas

Mine Transport Features

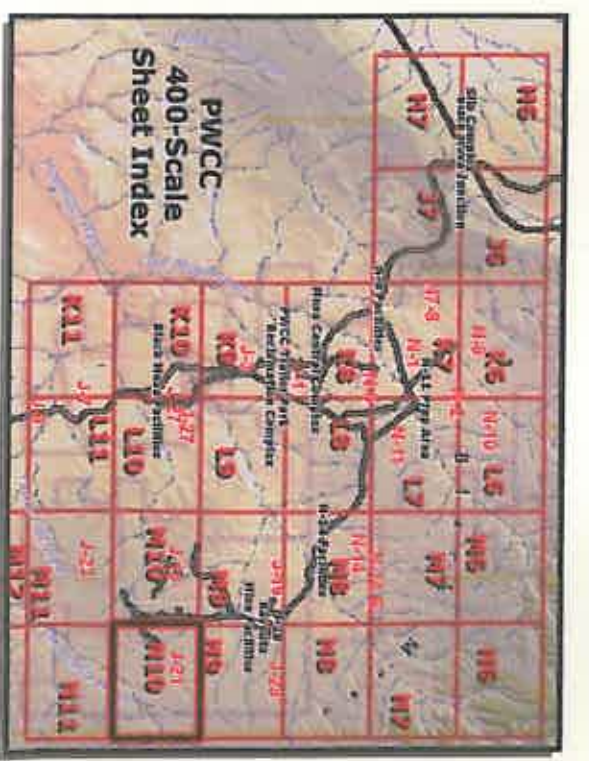
- PWCC Conveyor
- SRP/NGS Railroad
- PWCC Permit 01
- PWCC Permit 1D
- Primary Road
- Pit Ramp
- Ancillary Road

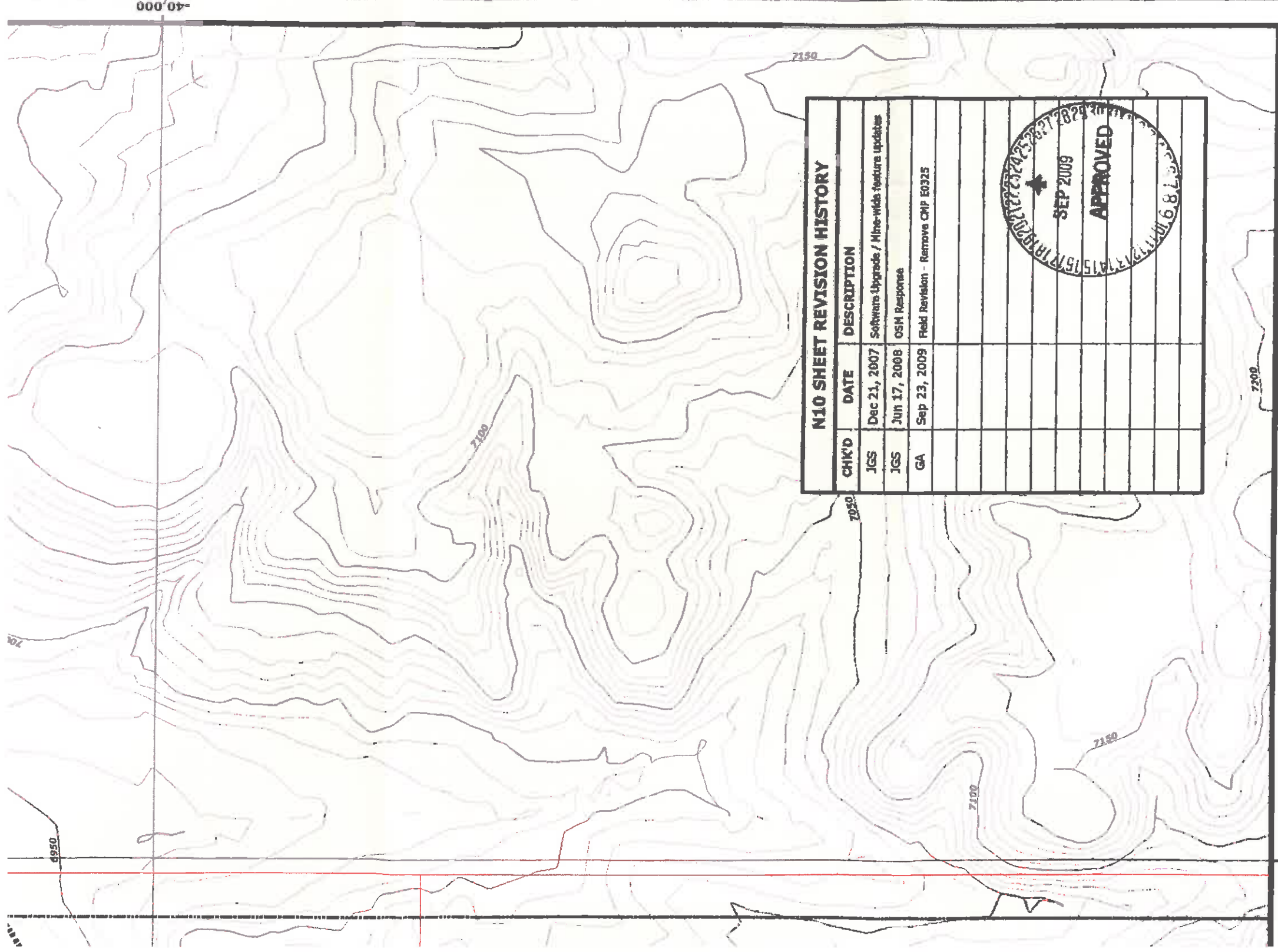
BTCA Features

- Riprap Rock
- Rock Checkdam
- Silt Fence
- Straw Bales
- Berm/Sump
- Revegetated Areas
- SPCC Point Feature

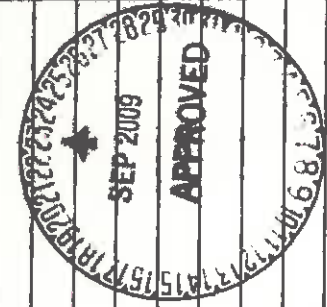
Non-mine Related Roads

- US/State Highway
- Navajo Route 41
- Primary Local Route
- Residential Road
- Track





N10 SHEET REVISION HISTORY		
CHK'D	DATE	DESCRIPTION
JGS	Dec 21, 2007	Software Upgrade / Mine-wide feature updates
JGS	Jun 17, 2008	OSM Response
GA	Sep 23, 2009	Field Revision - Remove CHIP E0325



Drainage Area and Facilities Map Drawing #85400

Sheet N10

Produced by PWCC GIS

Sep 23, 2009



1 Inch = 400 Feet

10 foot interval
Indices at 50 feet

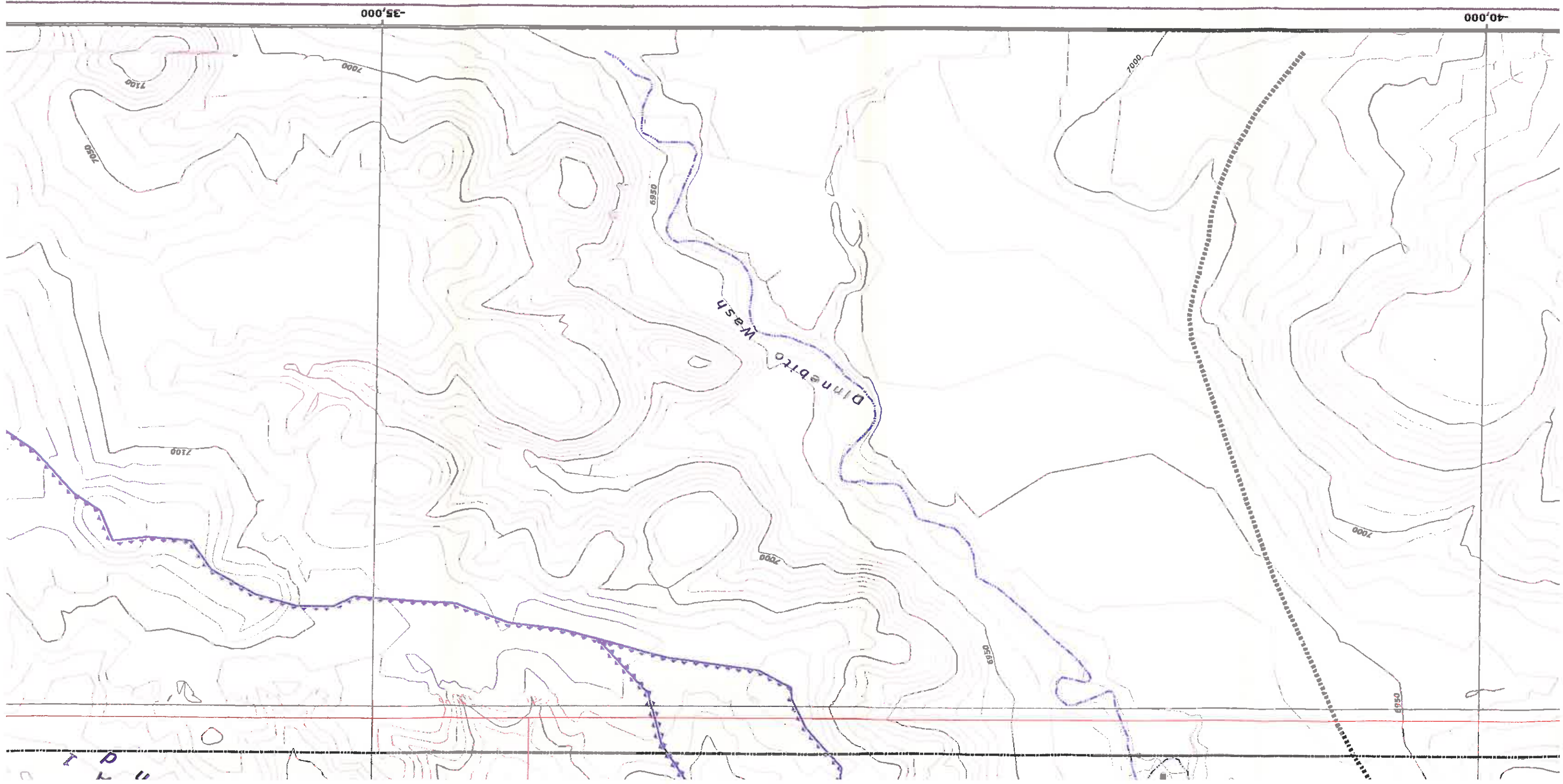


Black Mesa Complex
PO Box 850
Kayenta, Arizona 86033

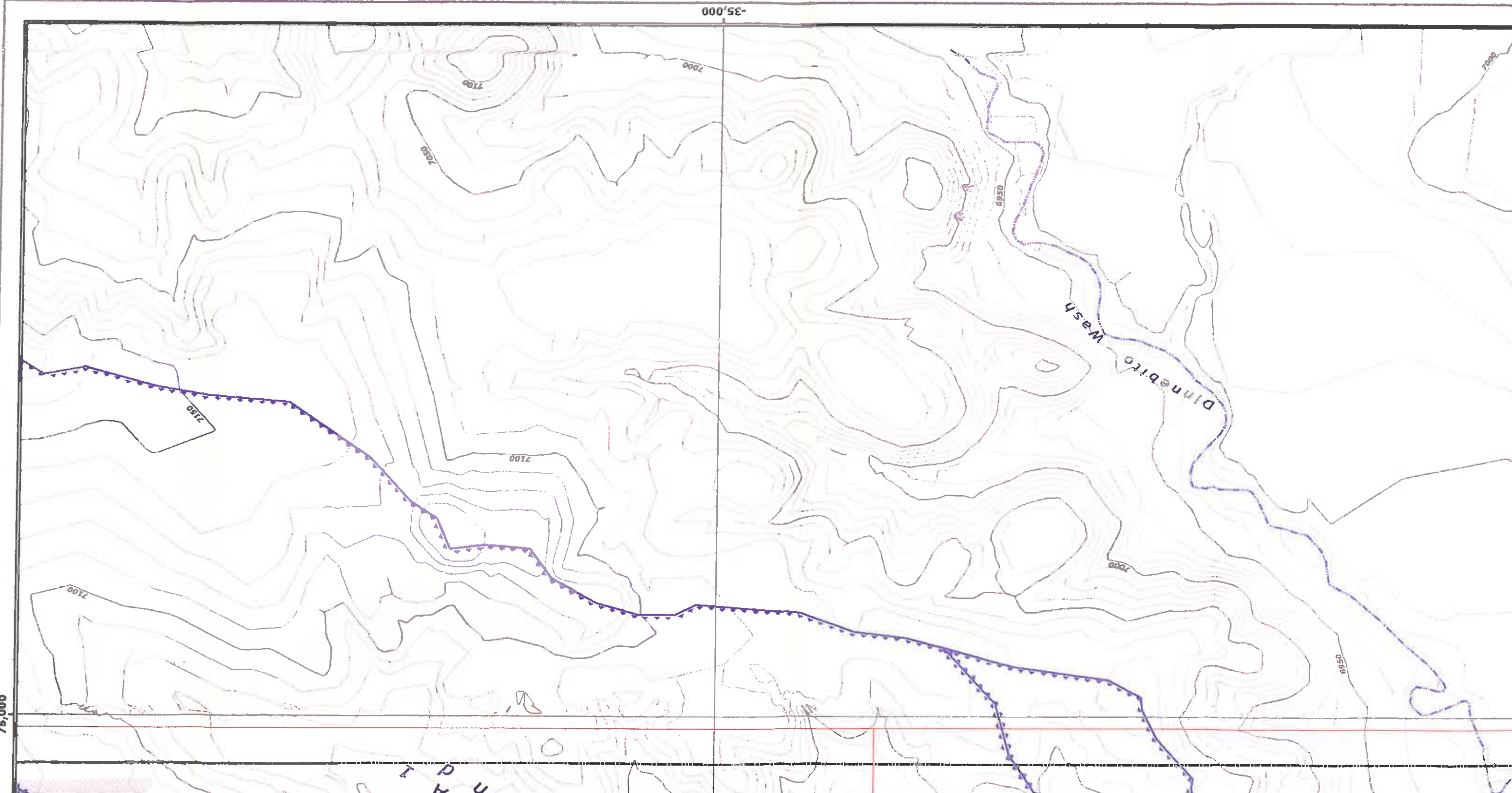


75,000

-40,000



-35,000



75,000

U
A
T
U