

85400 NOTES:

1. SEE DRAWING NO. 85360 FOR THE MINING AFFECTED LANDS.
2. SEE DRAWING NO. 85405 FOR THE GENERAL LOCATION OF THESE STRUCTURES.
3. SEE DRAWING NO. 85460-85490 FOR THE MINE SUPPORT FACILITIES MAP.
4. SEE DRAWING NO. 93500 FOR THE LOCATION OF THE ENVIRONMENTAL MONITORING SITES.
5. SEE CHAPTERS 6-7 AND 20-26 FOR INFORMATION ON THE FACILITIES AND RECLAMATION PLAN.

DRAINAGE DIRECTION ON FILL EMBANKMENTS ONLY APPLY WHEN MSHA SAFETY BERM EXISTS.

PRIMARY ROADS HAVE BEEN CONSTRUCTED OR RECONSTRUCTED AS DESIGNED AND IN ACCORDANCE WITH THE APPROVED PLAN.

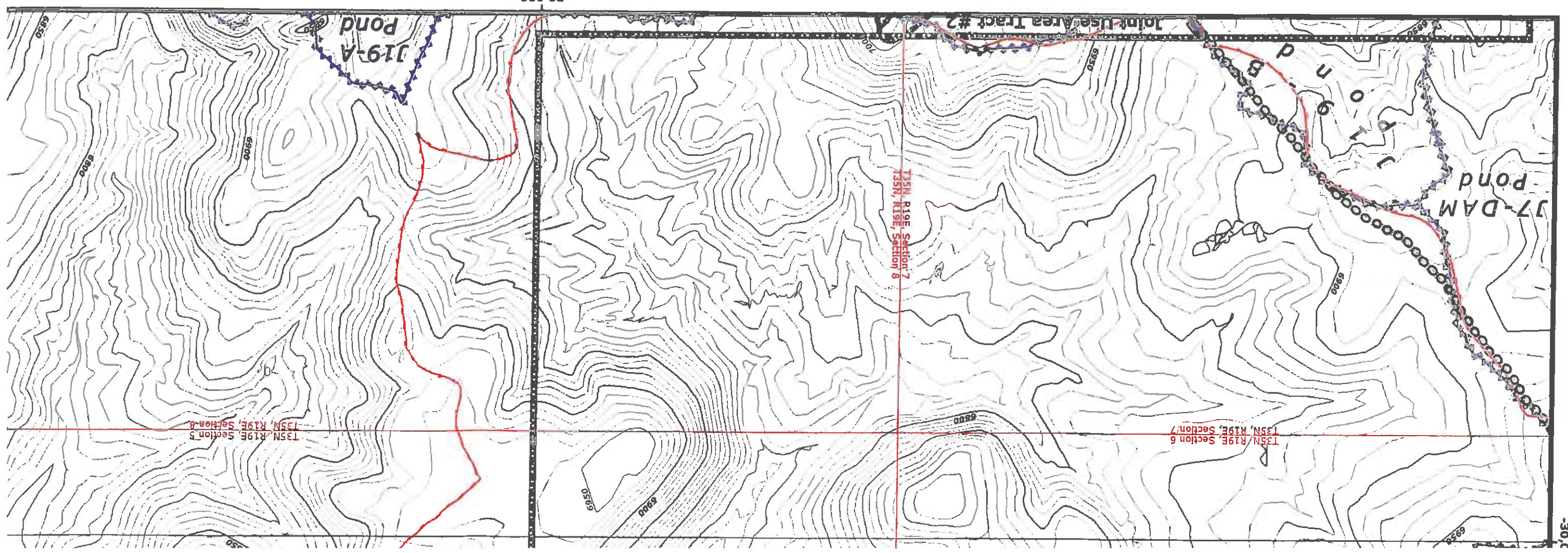
MAP REVISIONS

CHK'D	DATE	DESCRIPTION
JGS	Aug 15, 2004	OSM Response
JGS	Jan 14, 2005	N08 5 Year Mineplan Rev
JGS	Jun 15, 2005	N09 Facilities Revision
JGS	Sep 30, 2005	N09 & N08 Facilities Revision
JGS	Dec 15, 2005	N09 Sequence Revision
JGS	Jan 20, 2006	OSM Response
JGS	Feb 4, 2006	N06 Road As-Built Response
JGS	Feb 24, 2006	N09 Facilities Revision
GW	Apr 12, 2006	TCPs and Roads Revision
JGS	May 9, 2006	N09 Road As-Built
JGS	Jul 12, 2006	Airport Rd / WWS Waterline Revision
JGS	Aug 30, 2006	Road Alignment Revision
JGS	Dec 21, 2007	Software Upgrade / Mine-wide feature updates

ENGINEER'S CERTIFICATION

Date JAN 04 2008

James L. Schenck
 Registered Professional Engineer
 State of Arizona, License No. 10000
 James L. Schenck Engineering, Inc.
 1000 North Central Expressway, Suite 100
 Phoenix, Arizona 85004



50,000



Water Impoundment Features

- Existing
- Proposed
- Reclaimed
- Impoundment/SAE Watershed Boundary

Mine Area Facilities and Structures

- PWCC Powerline
- Non-PWCC Powerline
- Coal Stockpile
- Scoria Pit
- Explosives Storage Facility
- Non-PWCC Buildings / Residences
- PWCC Buildings and Structures

Culvert Features

- Existing
- Proposed
- Culvert Watershed Boundary

Mining Status Data

- Future Mining Areas
- Mined-Out Areas
- Highwall (7/6/1990)

Drainages and Diversions

- Major Drainage
- Road Drainage Direction
- Diversions

Other Water Features

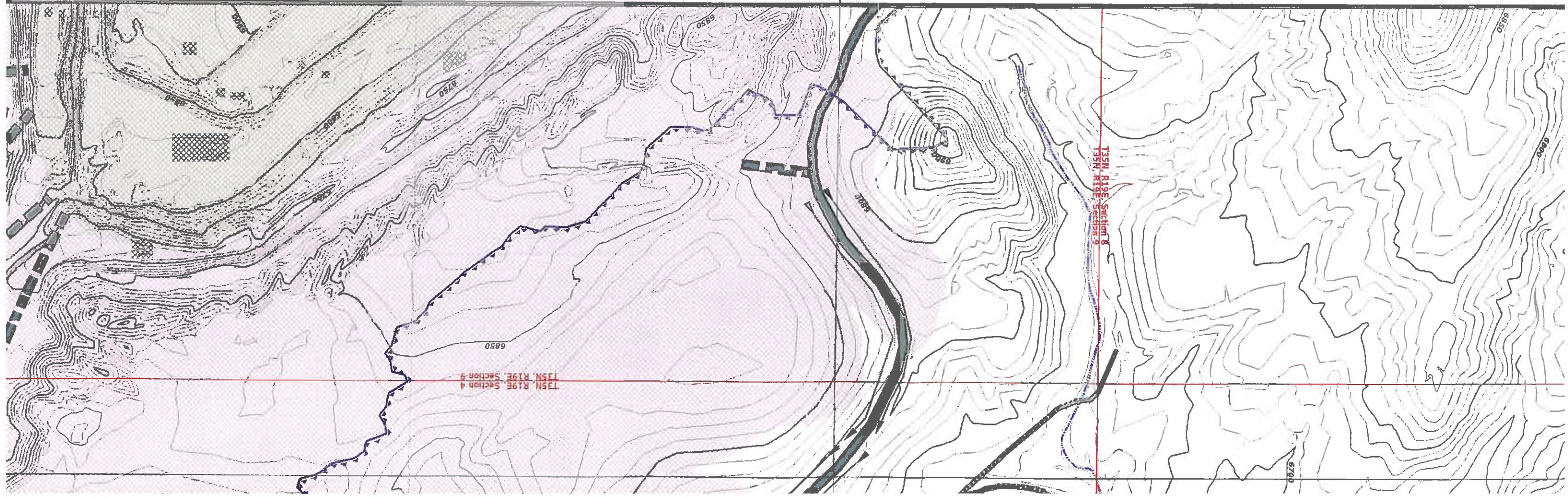
- PWCC Water Line
- Navajo Water Well
- Sewage Facility / Lagoon

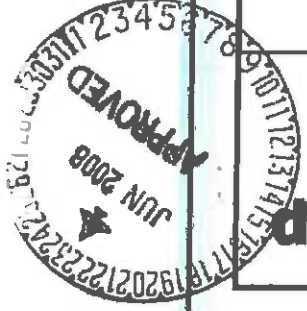
Administrative Boundaries

- 01 Permit Line
- 1D Permit Line
- PWCC Lease Line
- Pre-Law Areas
- Navajo-Hopi Partition Line

Transport Features

- PWCC Conveyor
- SRP/NGS Railroad
- PWCC Permit 01
- PWCC Permit 1D
- Primary Road
- Pit Ramp
- Ancillary Road
- Non-Mining Related Road
- Non-Mining Highway






Drainage Area and Facilities Map

Drawing #85400


Sheet M9

Produced by PWCC GIS


Jan 09, 2008



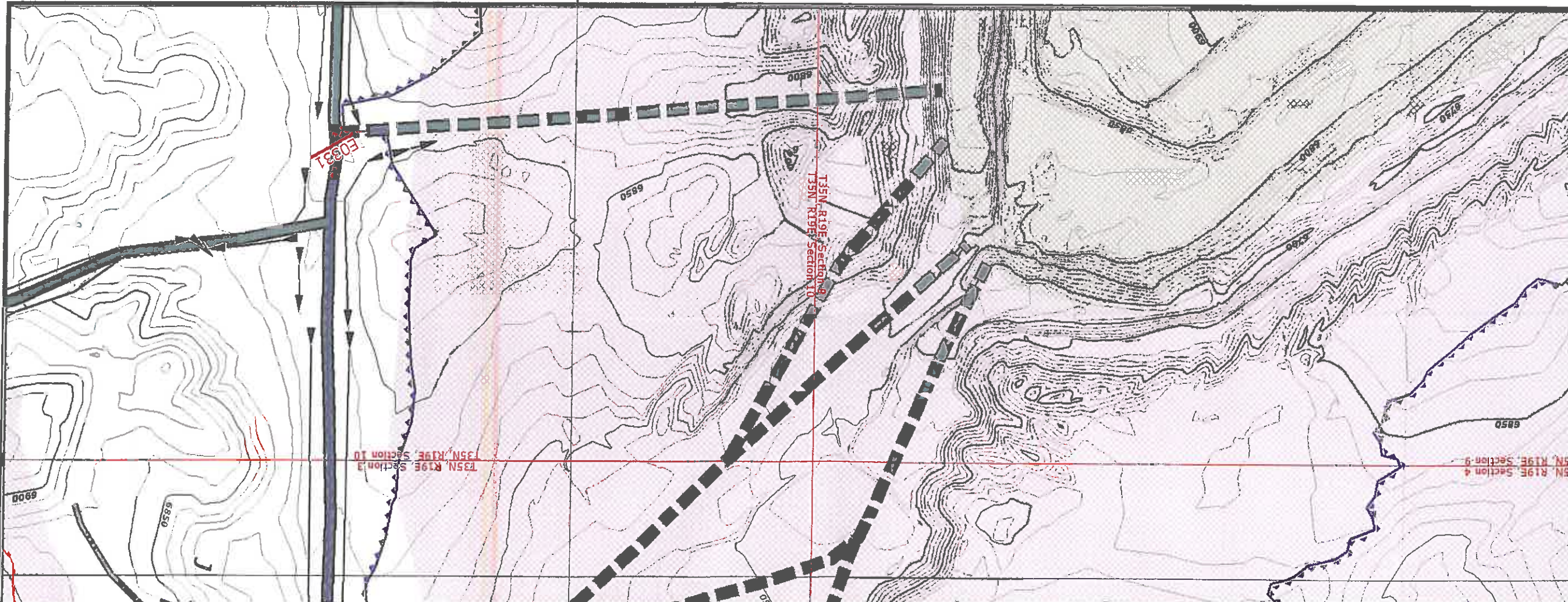
10 foot Interval
Indexes at 50 feet



0 100 200 400 Feet

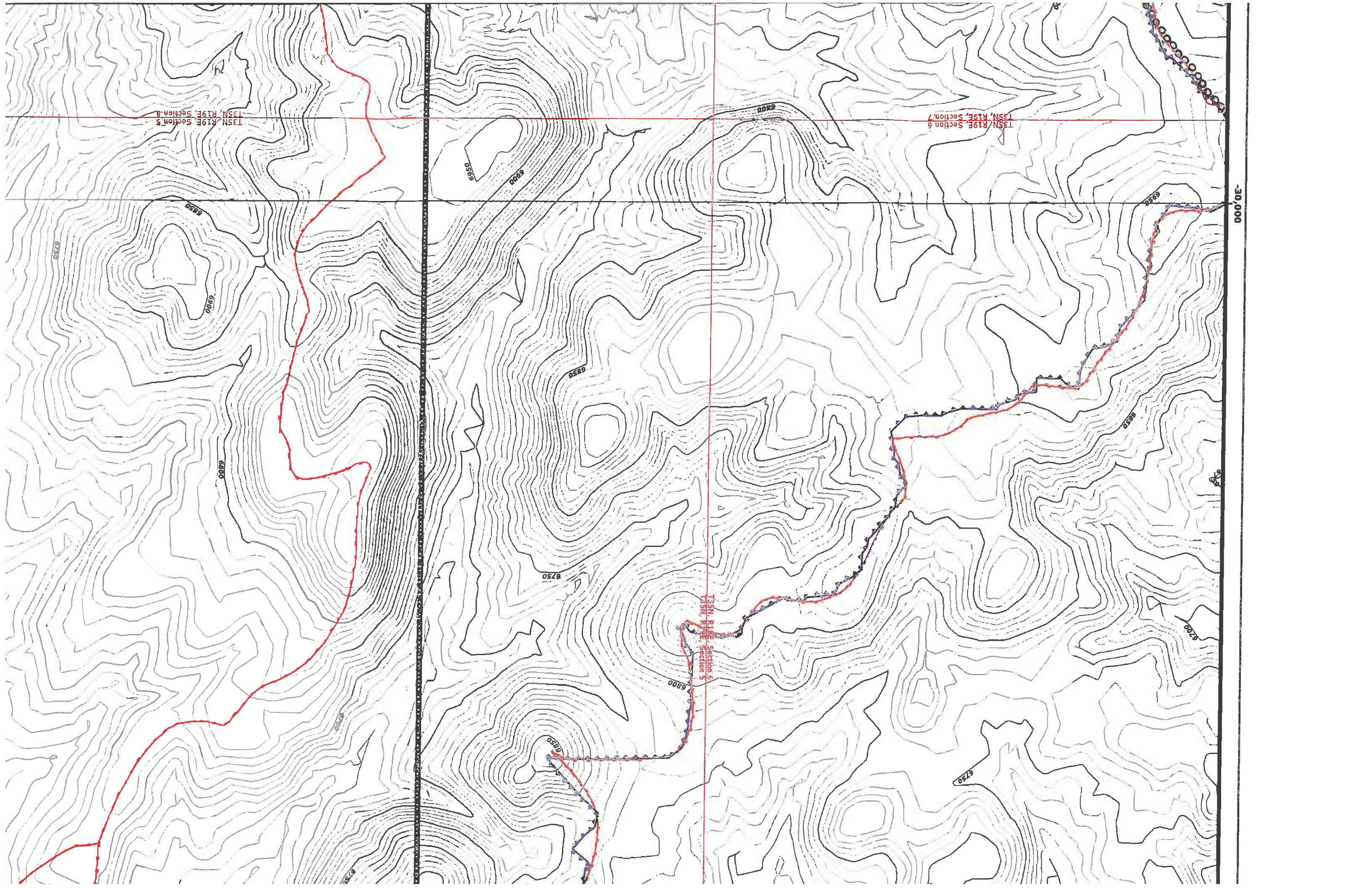


Black Mesa Complex
PO Box 850
Kayenta, Arizona 86033



- Other Water Features
 - PWCC Water Line
 - Navajo Water Well
 - Sewage Facility / Lagoon
- Divide Boundaries
 - 1D Permit Line
 - Lease Line
 - Pre-Law Areas
 - o-Hopi Partition Line

- Transport Features
 - PWCC Conveyor
 - SRP/NGS Railroad
 - PWCC Permit 01
 - PWCC Permit 1D
 - Primary Road
 - Pit Ramp
 - Non-Mining Related Road
 - Non-Mining Highway
- BICA Features
 - Riprap Rock
 - Rock Checkdam
 - Silt Fence
 - Straw Bales
 - Revegetated Areas
 - SPCC Point Feature



135N, R19E, Section 5
135N, R19E, Section 8

135N, R19E, Section 6
135N, R19E, Section 7

135N, R19E, Section 5
135N, R19E, Section 5

30,000

6800

6850

6750

6650

6550

6500

6600

6600

6700

6800

6750

6750

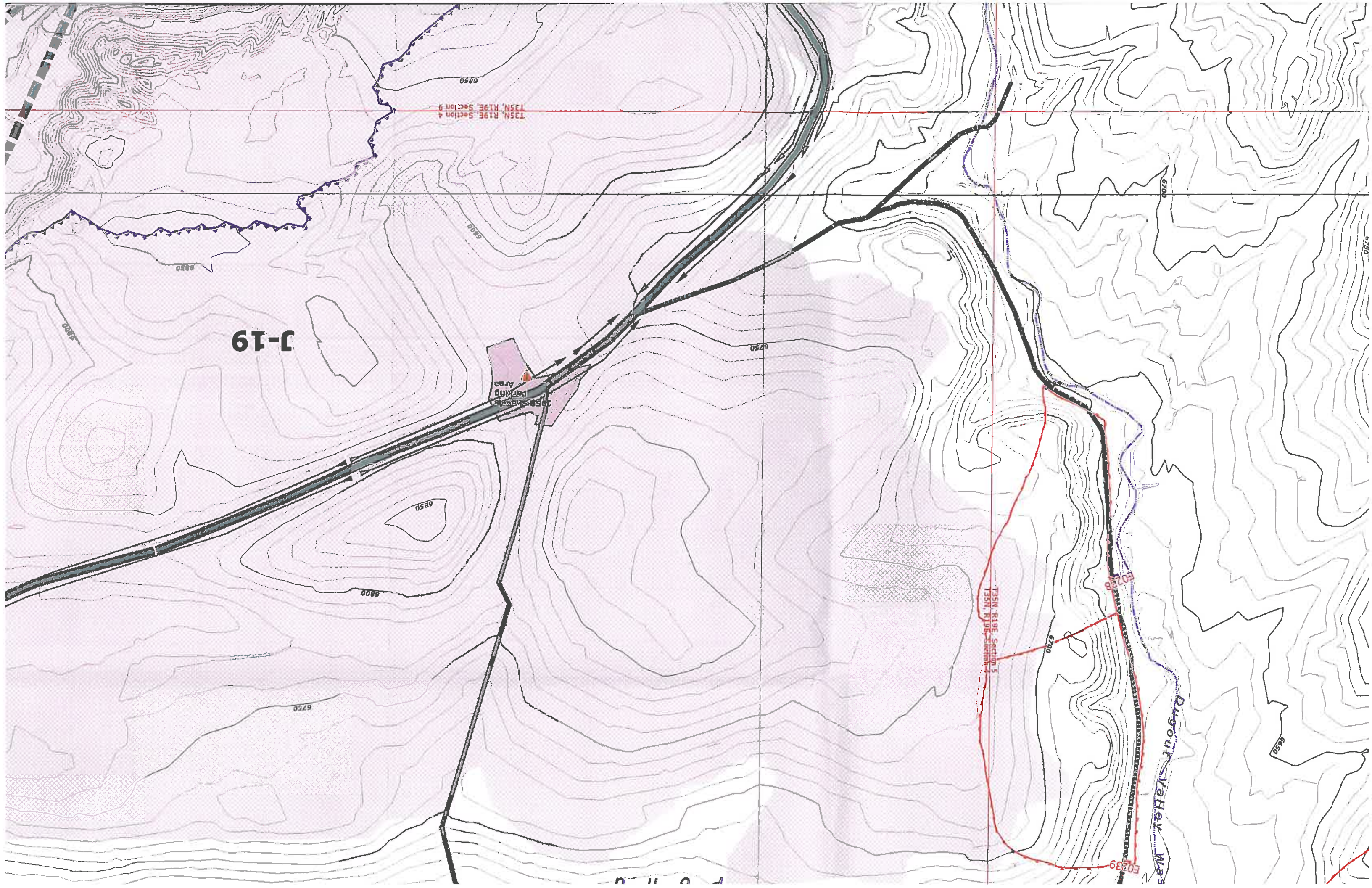
6750

6650

6550

6700

6400



6T-19

2958's parking Area

T35N, R19E, Section 4
T35N, R19E, Section 5

Dugout Valley Mas

T35N, R19E, Section 4

E02338

E02339

S

6850

6850

6800

6850

6800

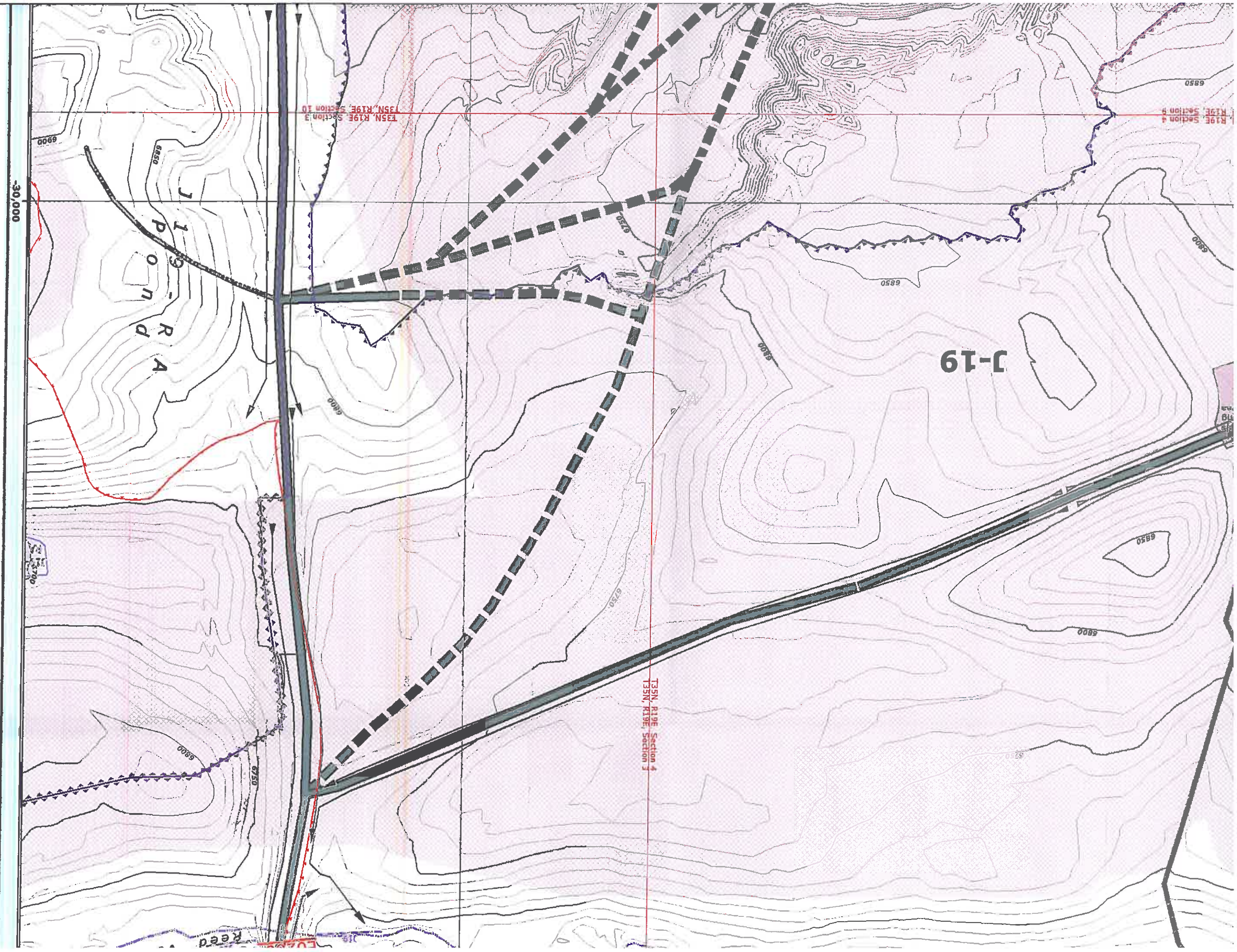
6750

6750

6700

6700

6650



-30,000

J 19 -
POND
ROAD

6T-C

T35N, R19E, Section 3

T35N, R19E, Section 4

T35N, R19E, Section 4

6700

6800

6750

6800

6750

6750

6800

6850

6800

6850

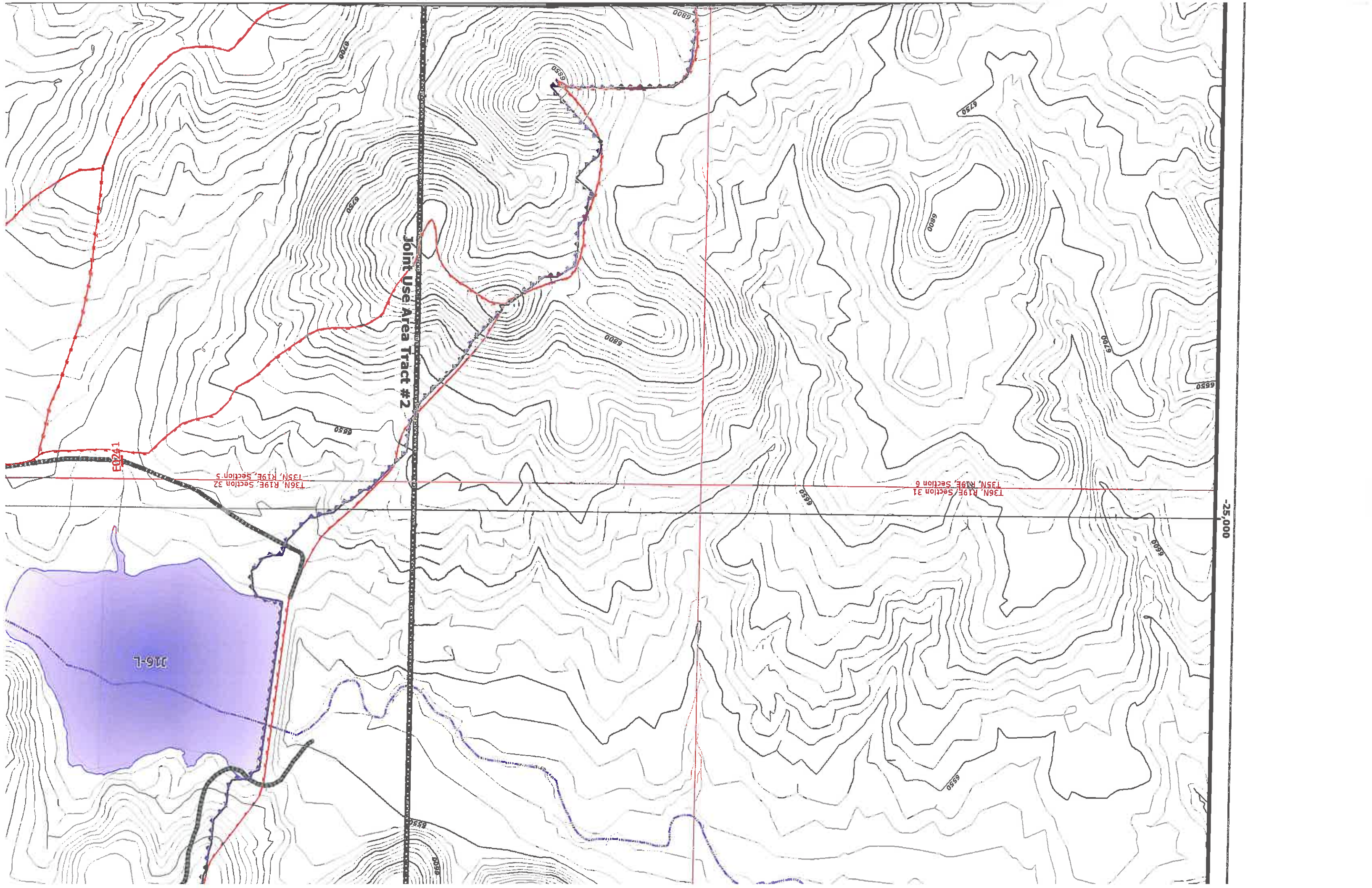
6850

6900

Reed

J19

BL



Joint Use Area Tract #2

E0241

136N, R19E, Section 32
135N, R19E, Section 5

136N, R19E, Section 31

116-1

25,000

6850

6800

6800

6750

6800

6850

6850

6900

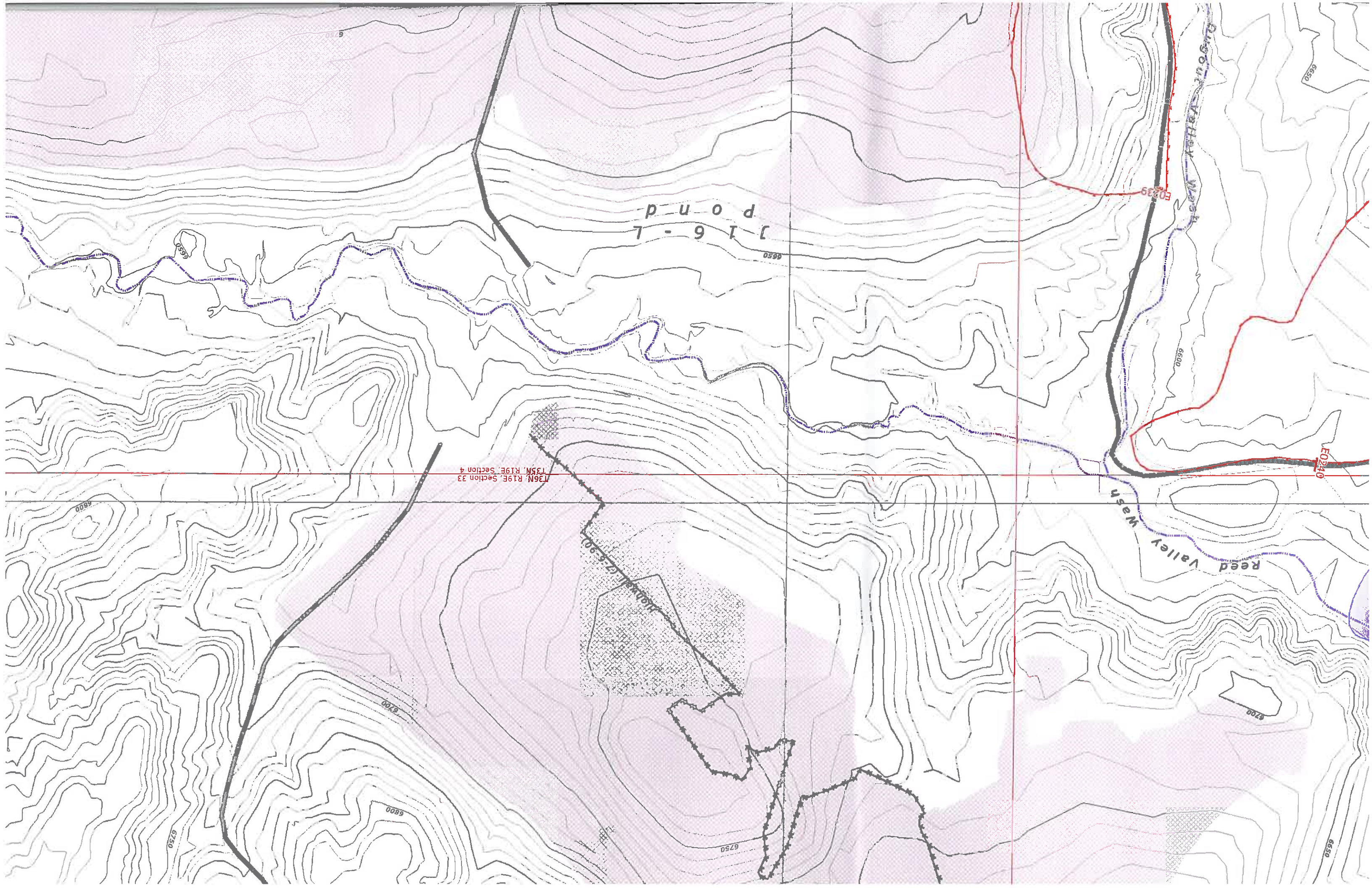
6850

6900

6850

6950

6990



J L 6 - 1 p o n d

T36N, R19E, Section 33
T35N, R19E, Section 4

Johnson (2-5-90)

Reed Valley Wash

Reed Valley Wash

F0240

F0239

6800

6750

6800

6700

6750

6700

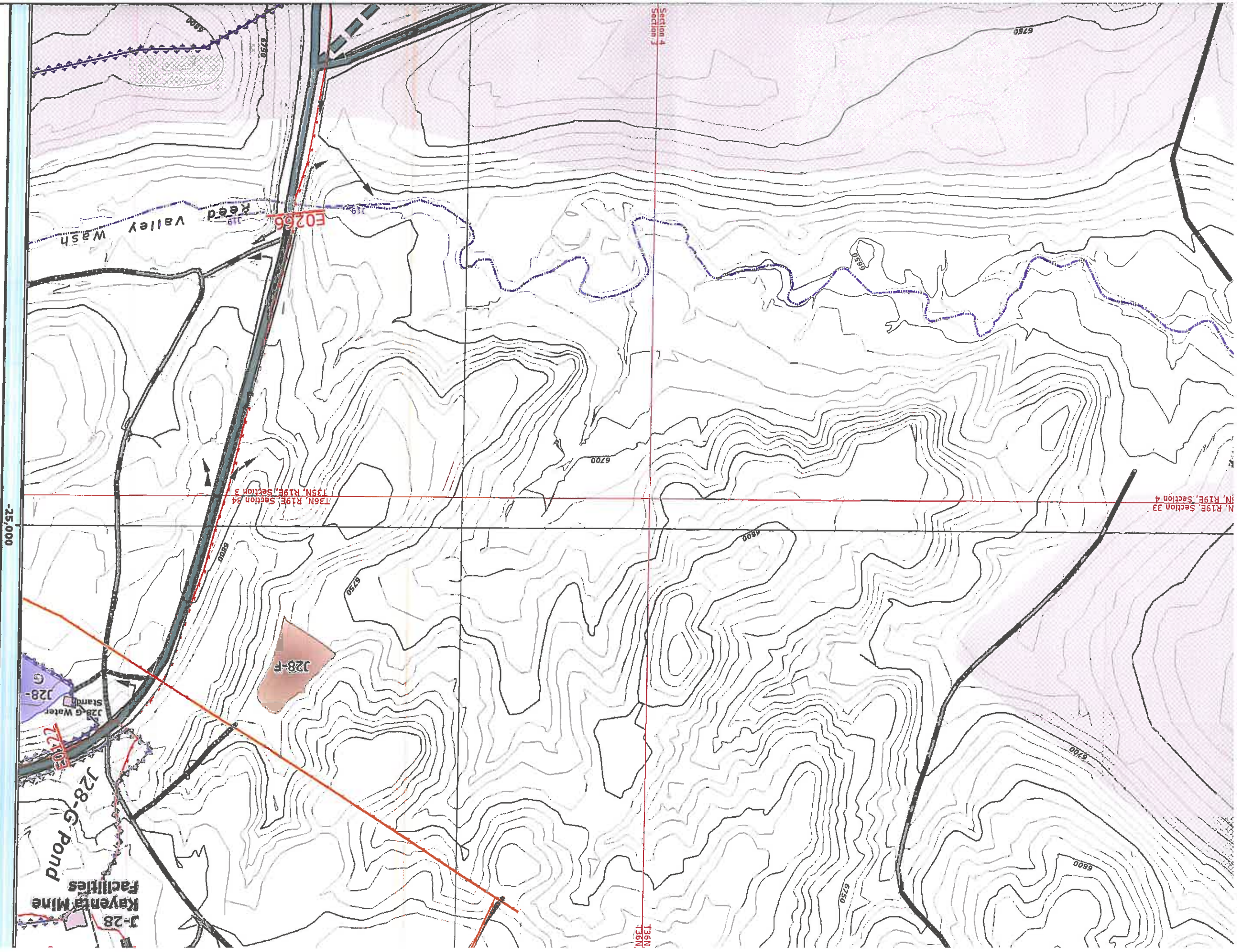
6650

6600

6550

6550

6550



60,000

20,000

Highwall (7-6-90)

J28-E

J 1 6 - A P o n d

J28-SL

J28-SL

J28-SL

J28-SL

J-28 BUCKET Repair Shop

J16 Equipment and Material Storage Yard

J16 Land Farm

T36N, R19E, Section 33
T36N, R19E, Section 34

J-28 Kayenta Mine Facilities

J28-G Pond

E0066

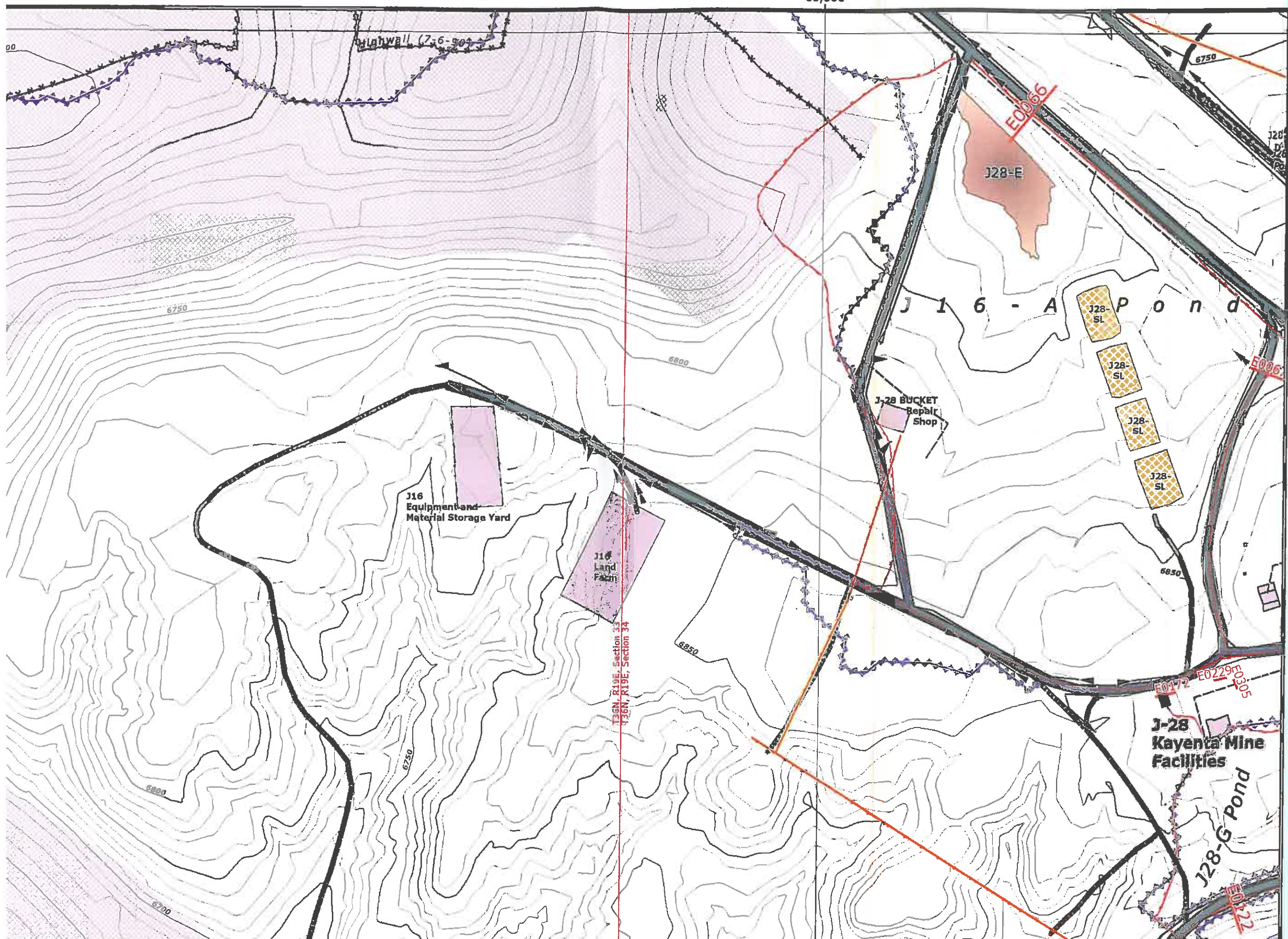
E0066

E0172

E0229

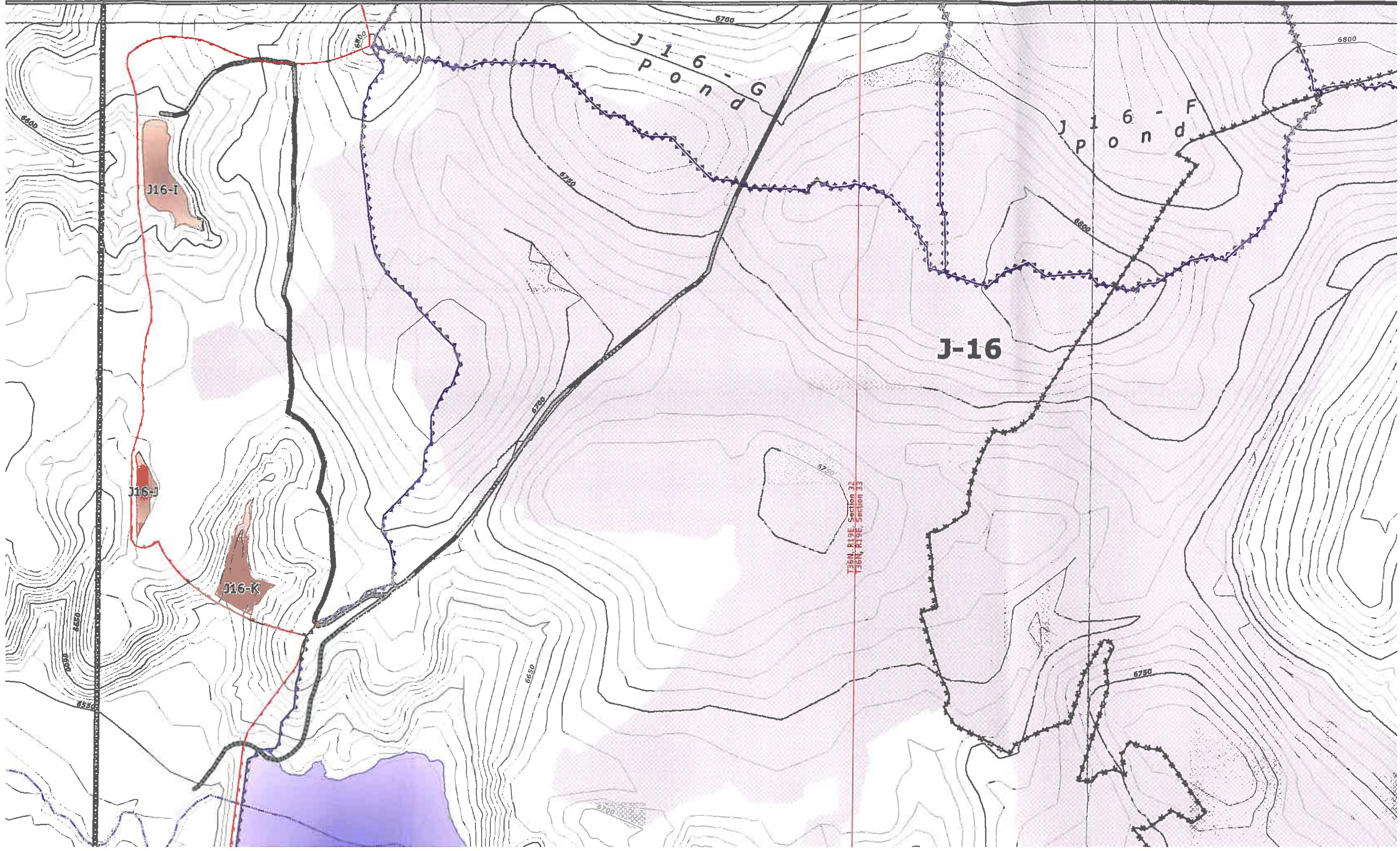
E0305

E0122



50,000

55,000



J16-I

J16-I

J16-K

J 1 6 - G
P o n d

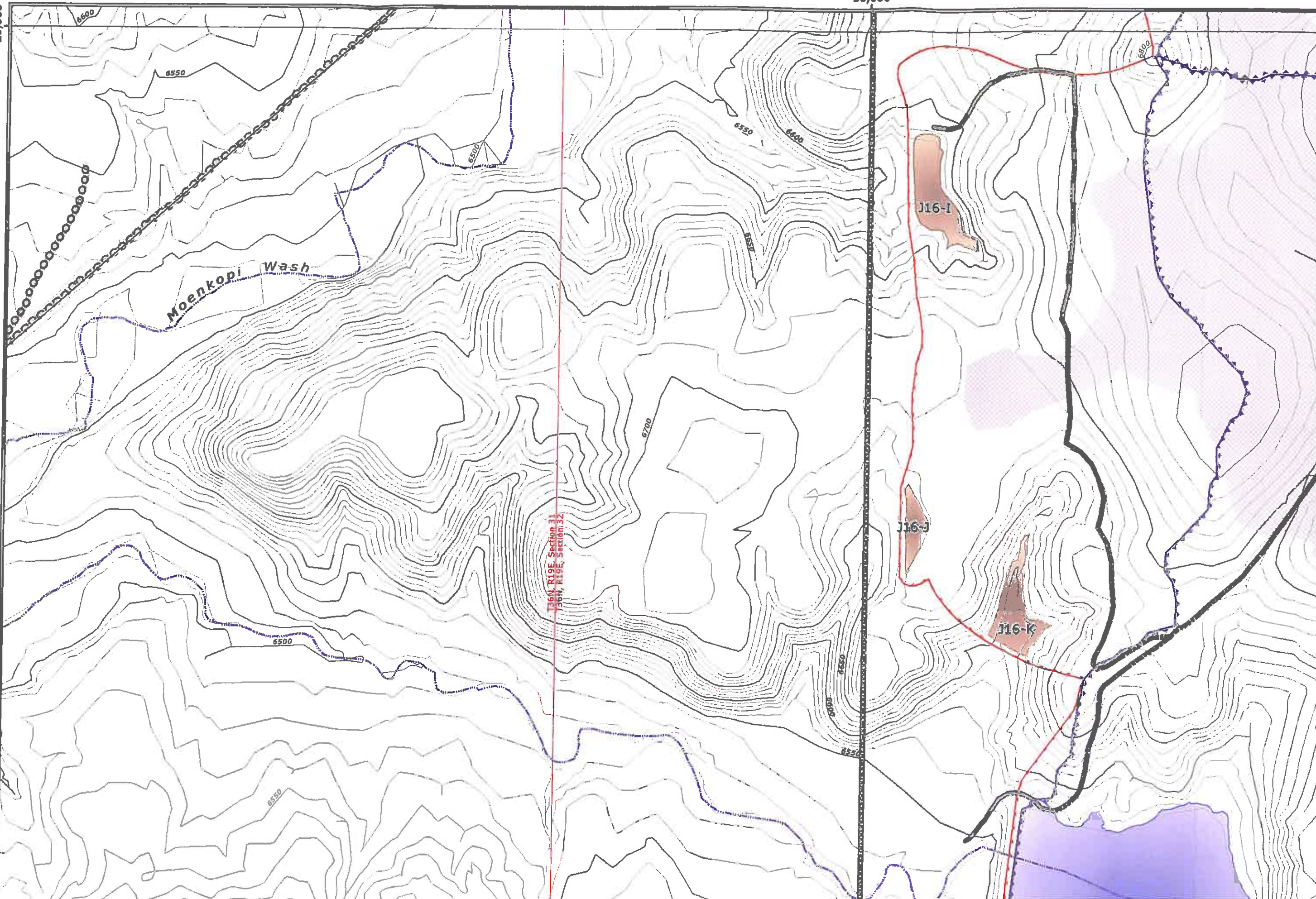
J 1 6 - F
P o n d

J-16

T36N, R19E, Section 32
T36N, R19E, Section 33

-20,000

50,000



Moenkopi Wash

T36N, R19E, Section 31
T36N, R19E, Section 32

J16-I

J16-J

J16-K