

Drainage Area and Facilities Map

Drawing #85400

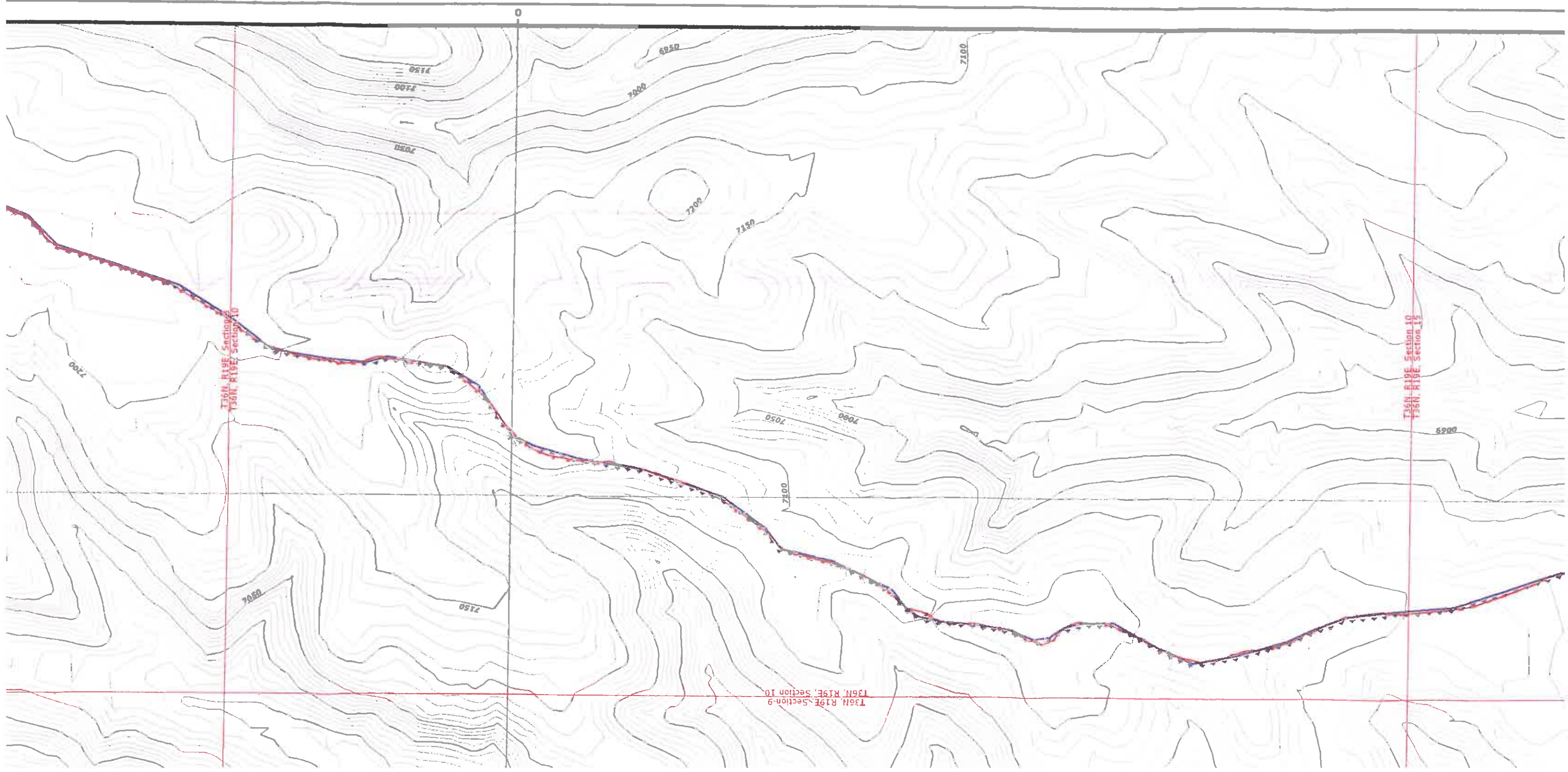
Sheet M7

Produced by PWCC GIS
 Jan 09, 2008

0 100 200 400 Feet
 1 Inch = 400 Feet
 10 foot interval
 Indexes at 50 feet

PEABODY WESTERN
 Black Mesa Complex
 PO Box 650
 Kayenta, Arizona 86033

- ICA Features**
- ▶ Riprap Rock
 - ▶ Rock Checkdam
 - ▶ Silt Fence
 - ▶ Straw Bales
 - ▶ Revegetated Areas
 - ▶ SPCC Point Feature



T36N, R19E, Section 9
T36N, R19E, Section 10

T36N, R19E, Section 9
T36N, R19E, Section 10

T36N, R19E, Section 10
T36N, R19E, Section 15

0

7000

7050

7150

7050

7000

7000

7050

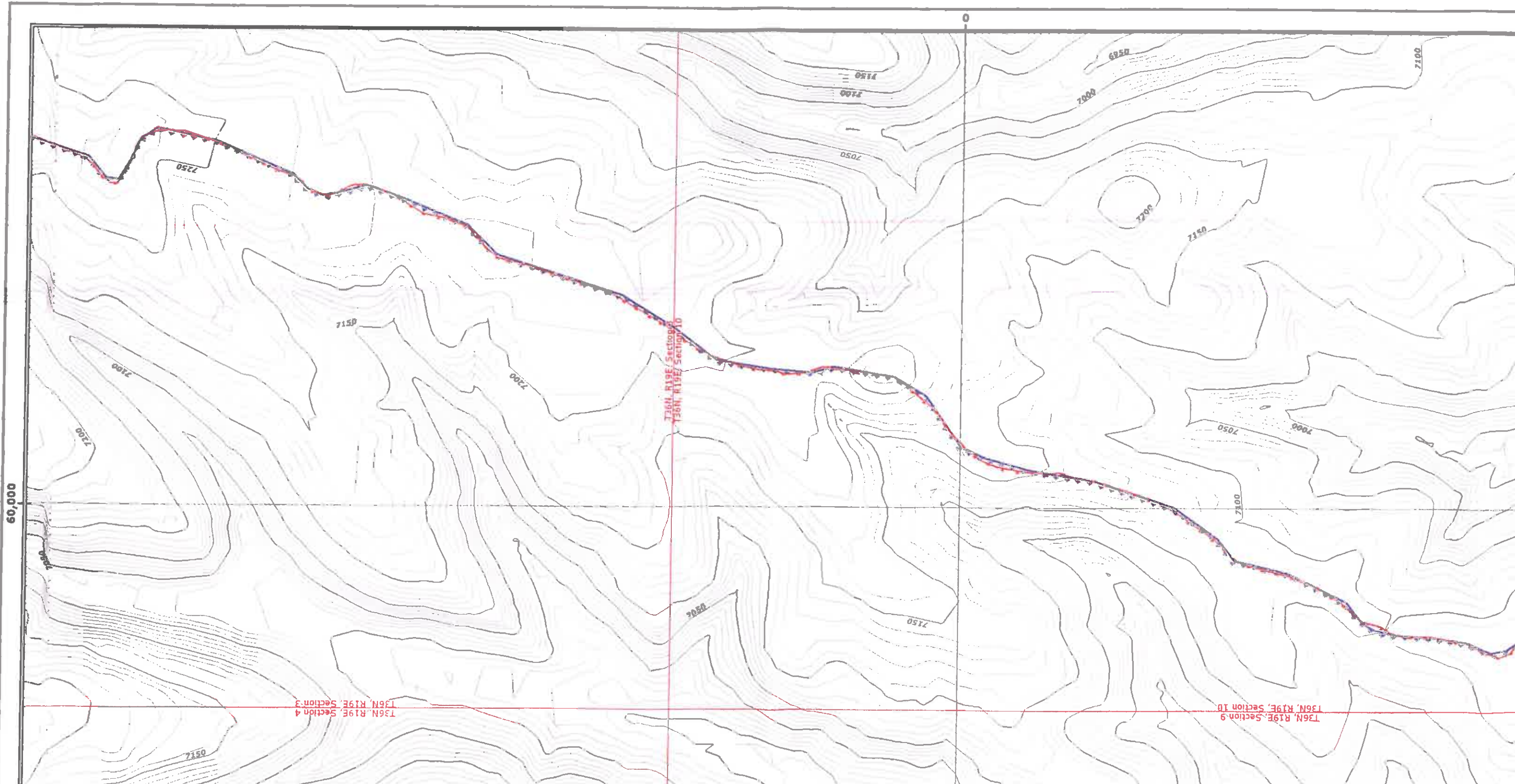
7100

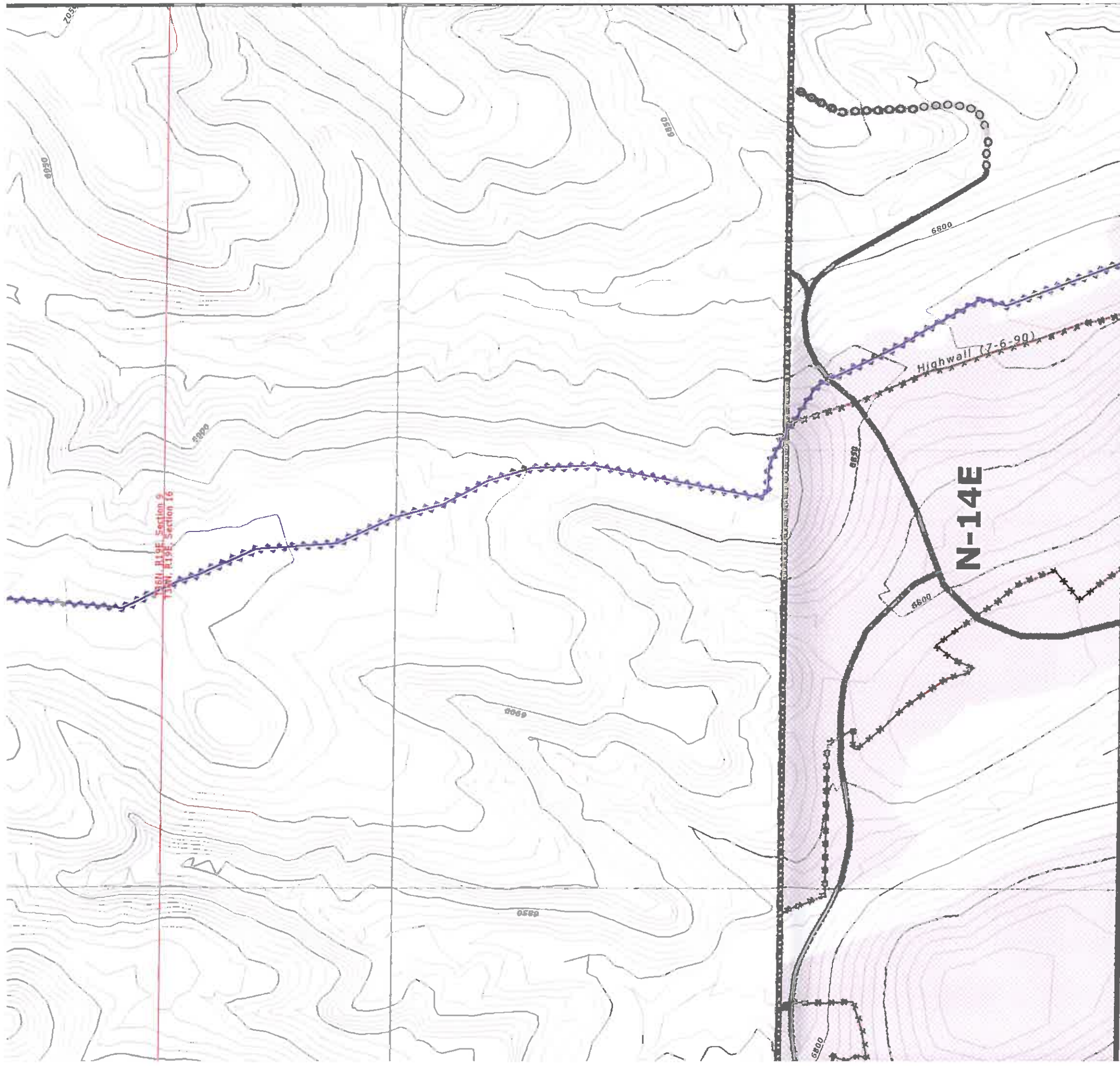
7050

7000

7100

6900





55,000

Vertical Features

- Existing
- Proposed
- Culvert Watershed Boundary

Drainages and Diversions

- Major Drainage
- Road Drainage Direction
- Diversions

Mining Status Data

- Future Mining Areas
- Mined-Out Areas
- Highwall (7/6/1990)
- Age Facility
- Buildings / Residences

Other Water Features

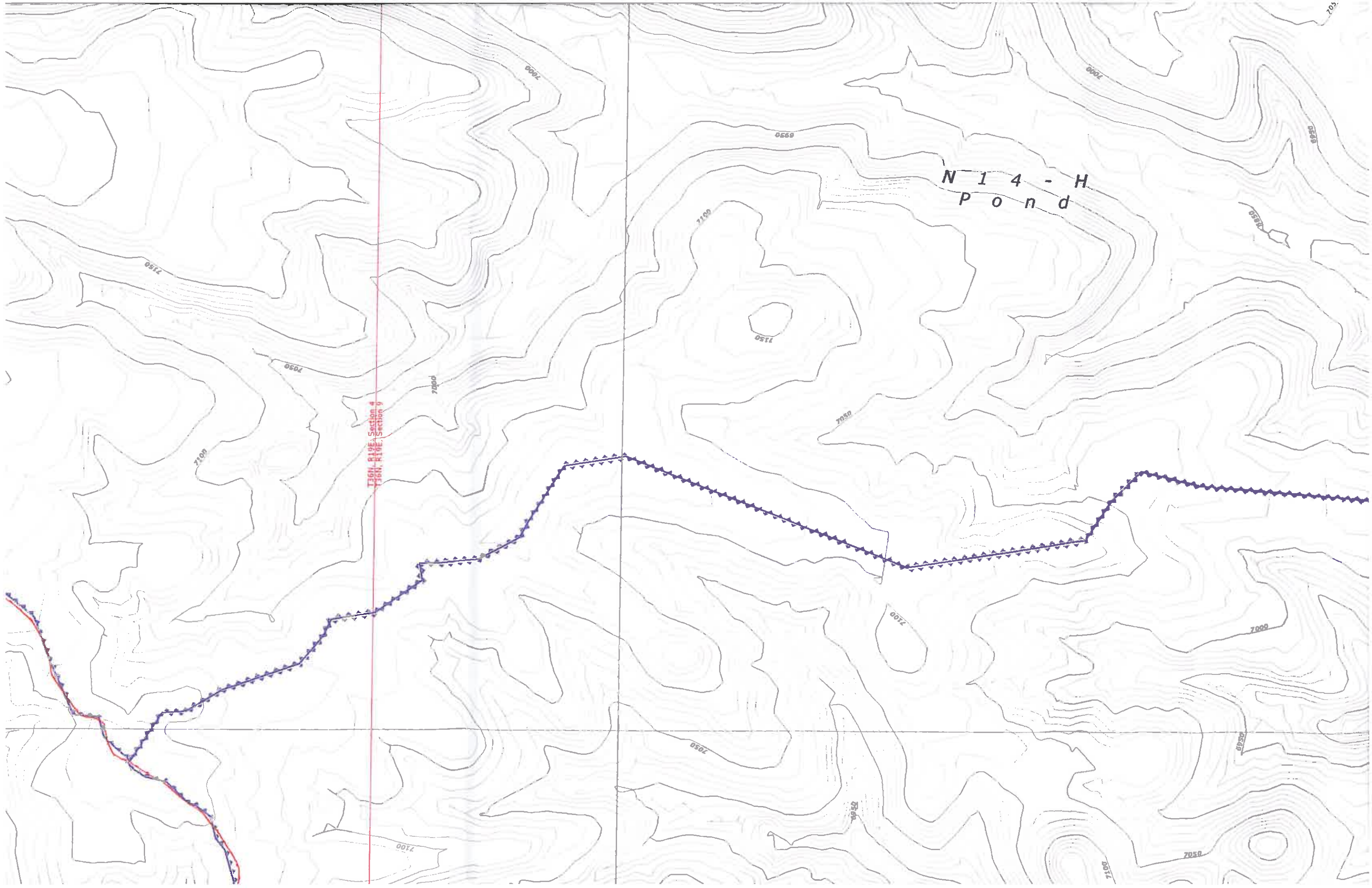
- PWCC Water Line
- Navajo Water Well
- Sewage Facility / Lagoon

Administrative Boundaries

- 01 Permit Line
- PWCC Lease Line
- Navajo-Hopi Partition Line
- 1D Permit Line
- Pre-Law Areas

Transport Features

- PWCC Conveyor
- SRP/NGS Railroad
- PWCC Permit 01
- PWCC Permit 1D
- Primary Road
- Pit Ramp
- Ancillary Road
- Non-Mining Related Road
- Non-Mining Highway



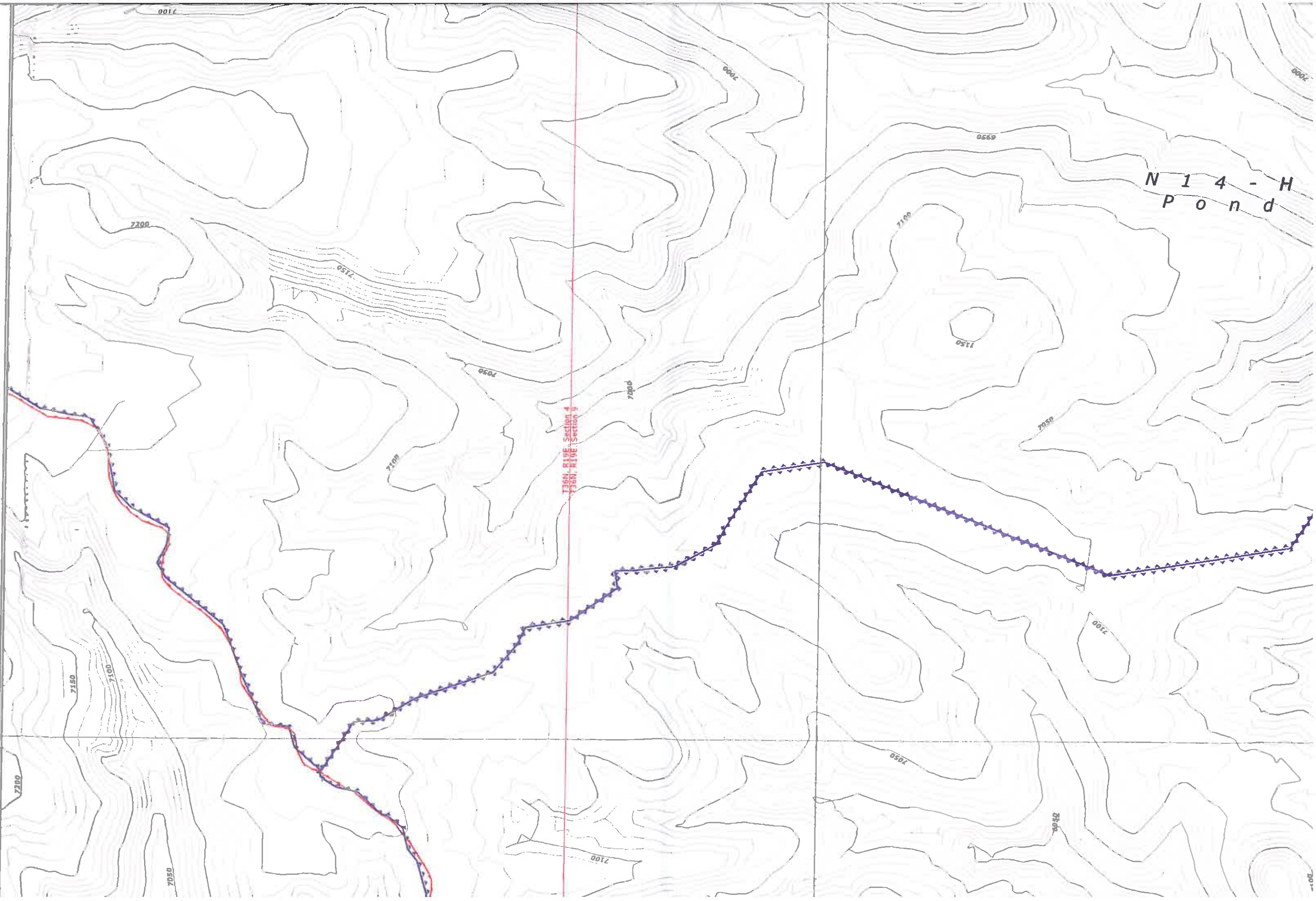
136N. R19E, Section 4
136N. R19E, Section 9

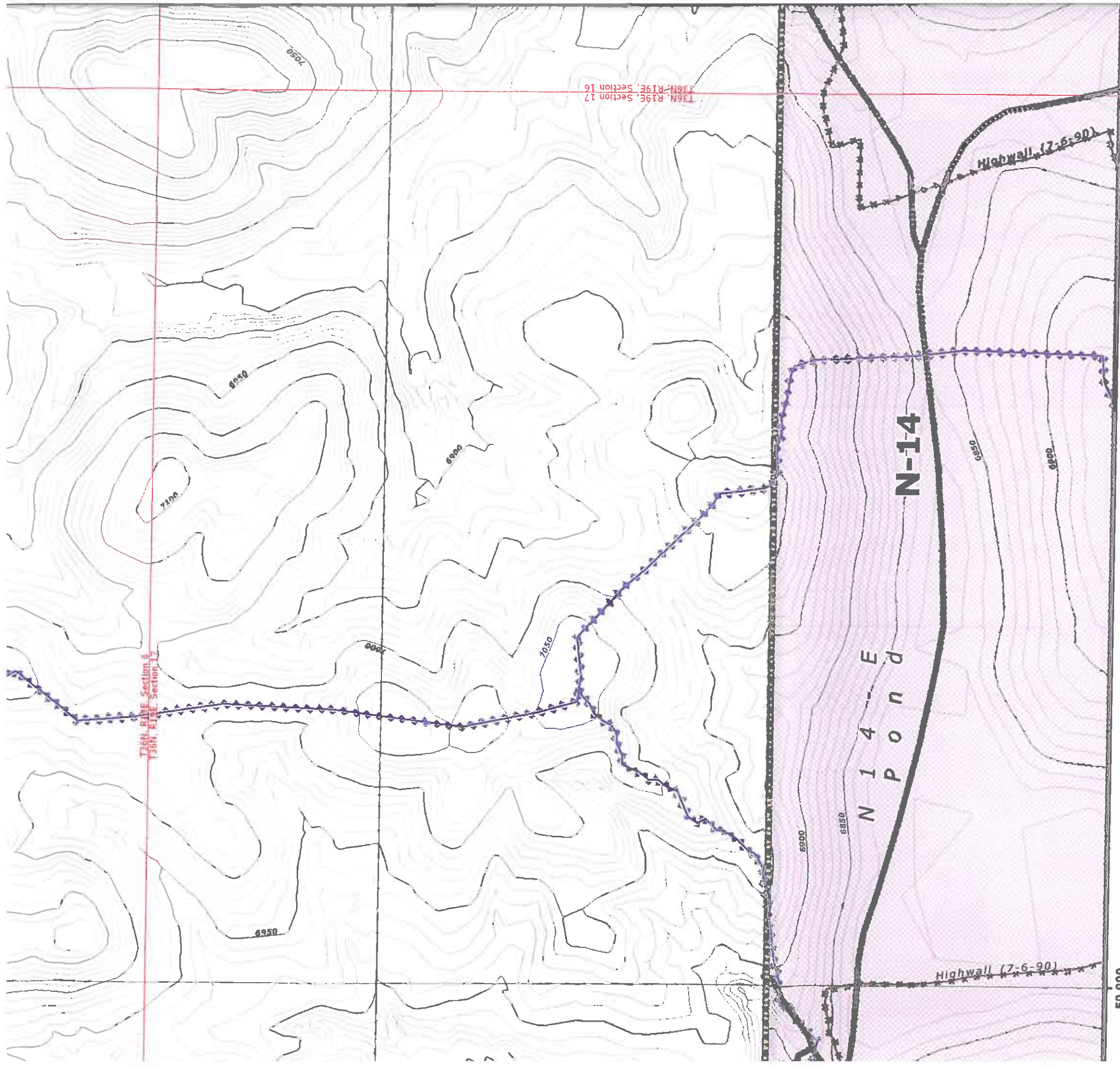
N 1 4 - H
P o n d

T36N, R19E, Section 4
T36N, R19E, Section 9

N 1 4 - H
P o n d

55,000





50,000

■ MINING AFFECTED LANDS.
 ■ GENERAL LOCATION
 ■ OR THE MINE SUPPORT FACILITIES MAP.
 ■ LOCATION OF THE ENVIRONMENTAL
 ■ INFORMATION ON THE FACILITIES
 ■ ANKMENTS ONLY APPLY WHEN
 ■ RUCTED OR RECONSTRUCTED
 ■ WITH THE APPROVED PLAN."

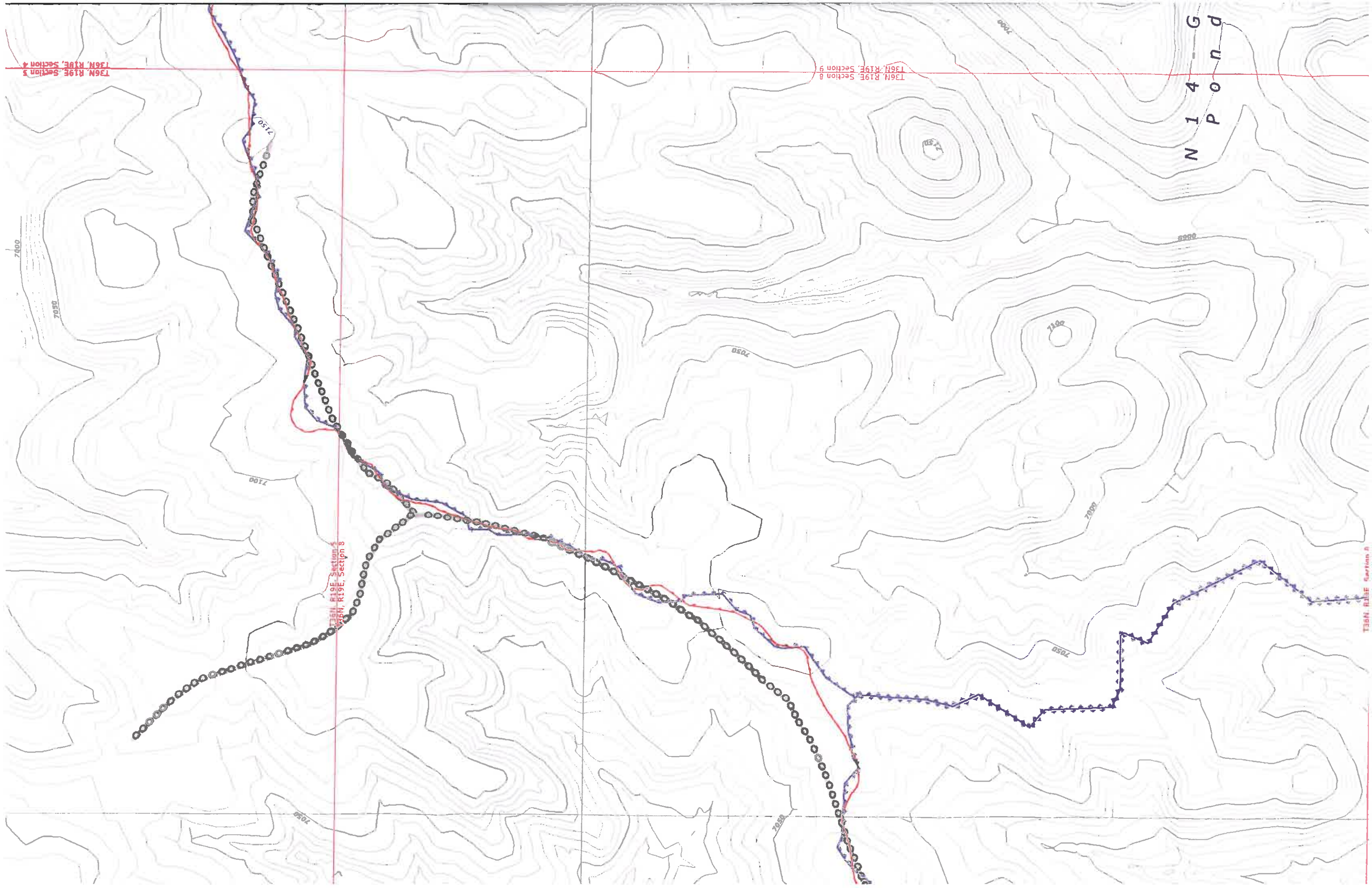


Water Impoundment Features

- Existing
- Proposed
- Reclaimed
- Impoundment/SAE Watershed Boundary

Mine Area Facilities and Structures

- PWCC Powerline
- Non-PWCC Powerline
- Coal Stockpile
- Scoria Pit
- PWCC Buildings and Structures
- Non-PWCC Buildings and Structures
- Explosives Storage

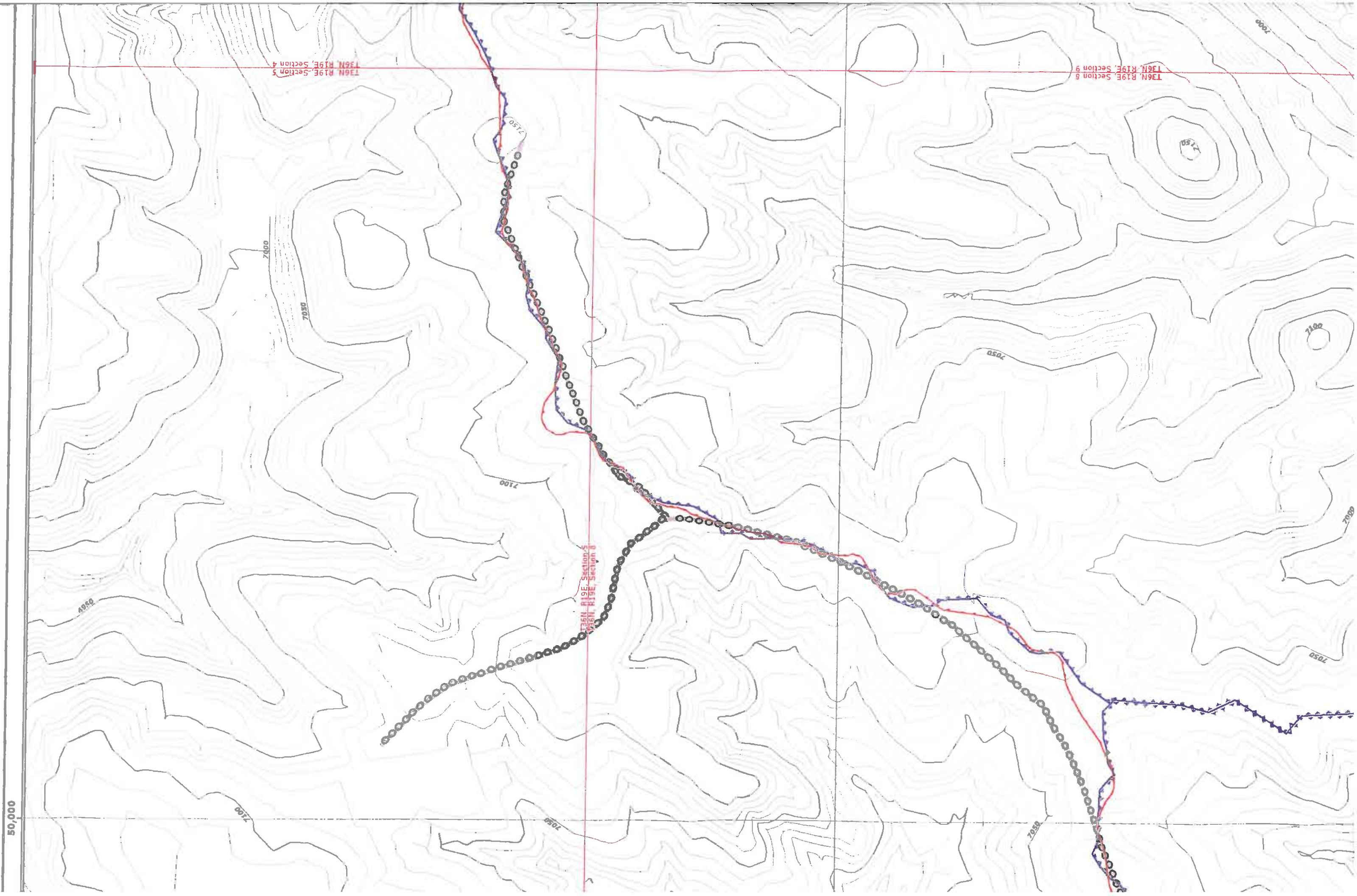


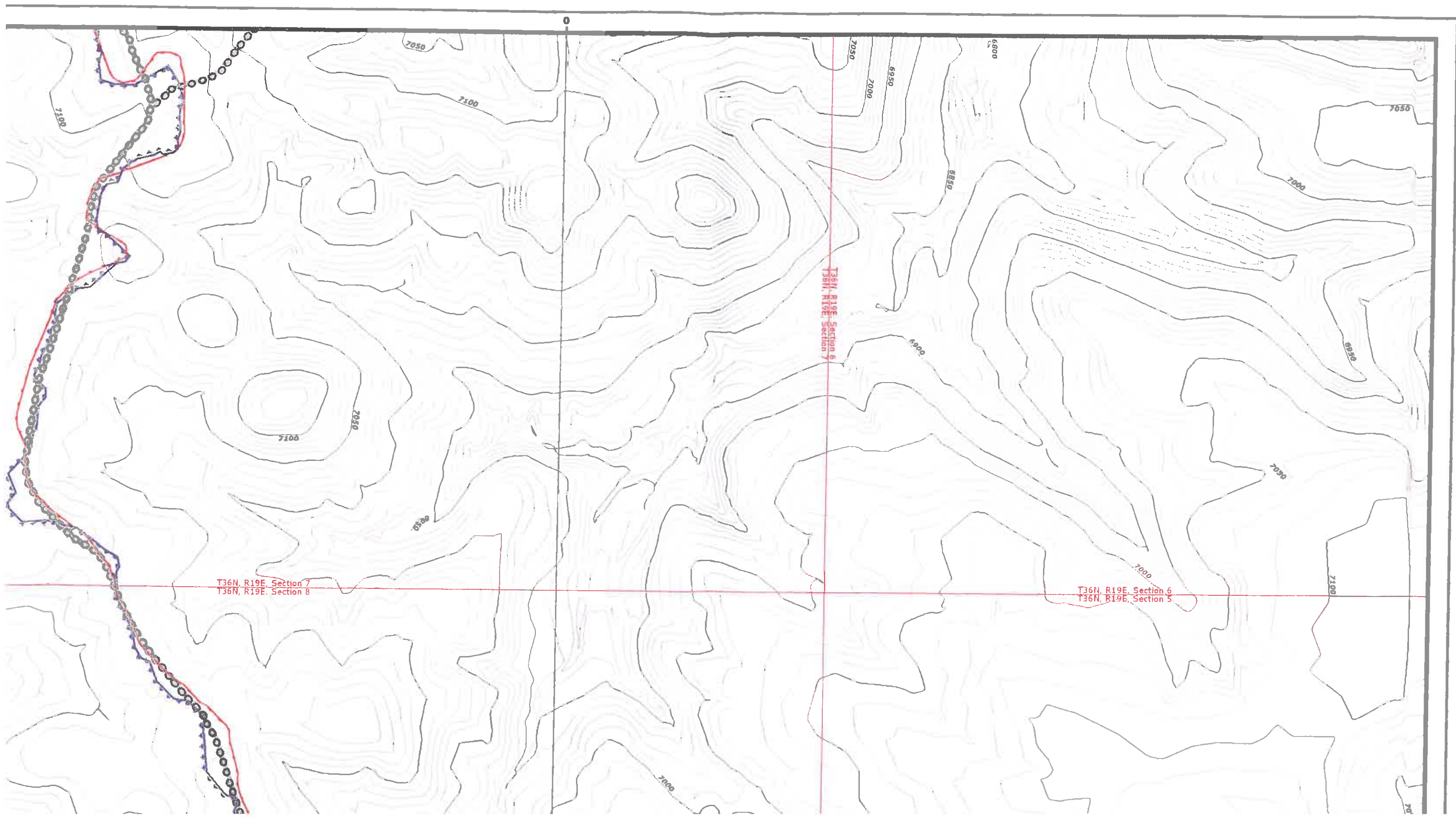
50,000

T36N, R19E, Section 4
T36N, R19E, Section 5

T36N, R19E, Section 8
T36N, R19E, Section 9

T36N, R19E, Section 5
T36N, R19E, Section 6





7050

7100

7050

6950

7000

6900

6850

7050

7000

6950

7050

7100

6900

7000

7050

7000

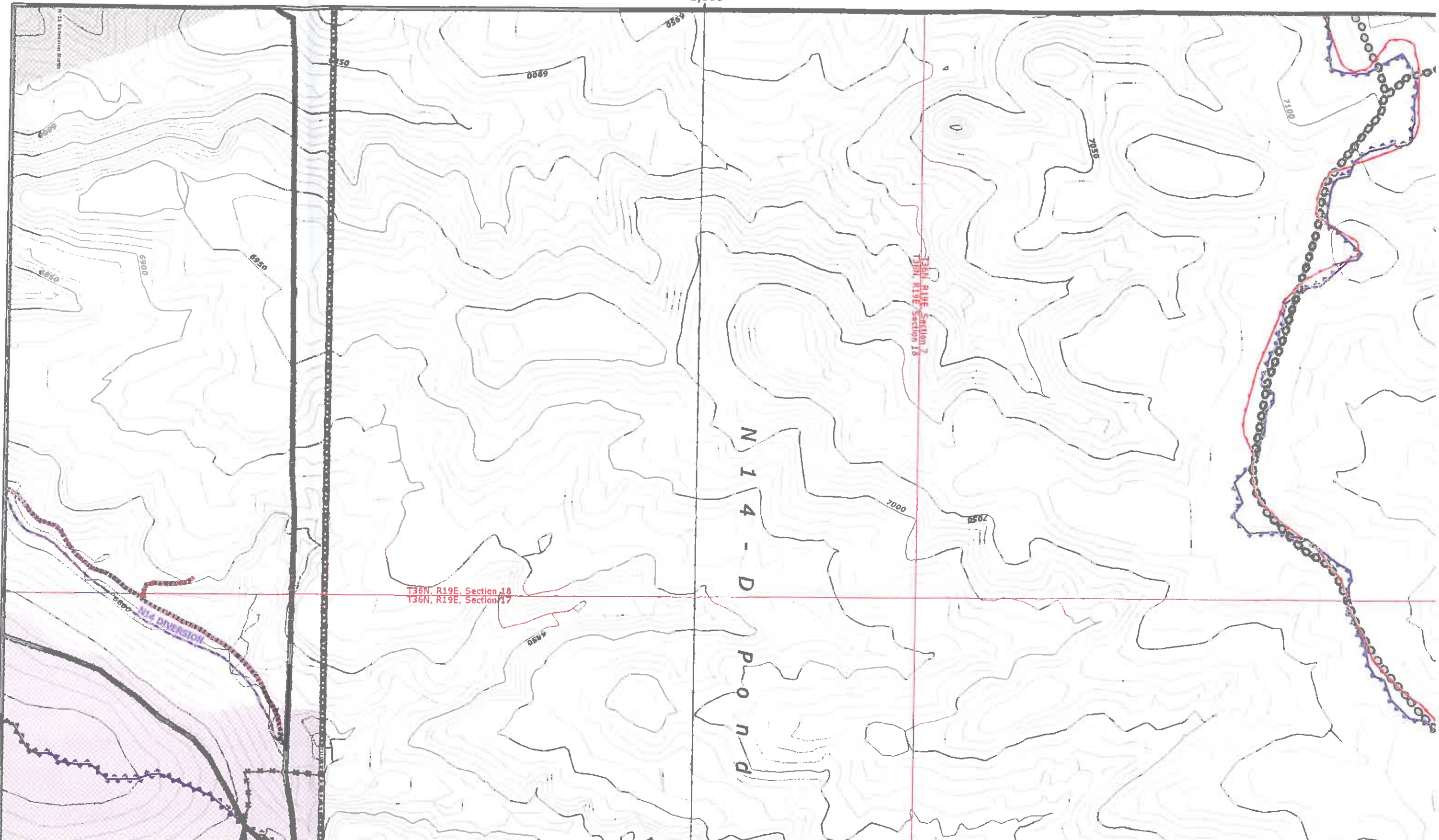
7100

T36N, R19E, Section 7
T36N, R19E, Section 8

T36N, R19E, Section 6
T36N, R19E, Section 5

7000

700

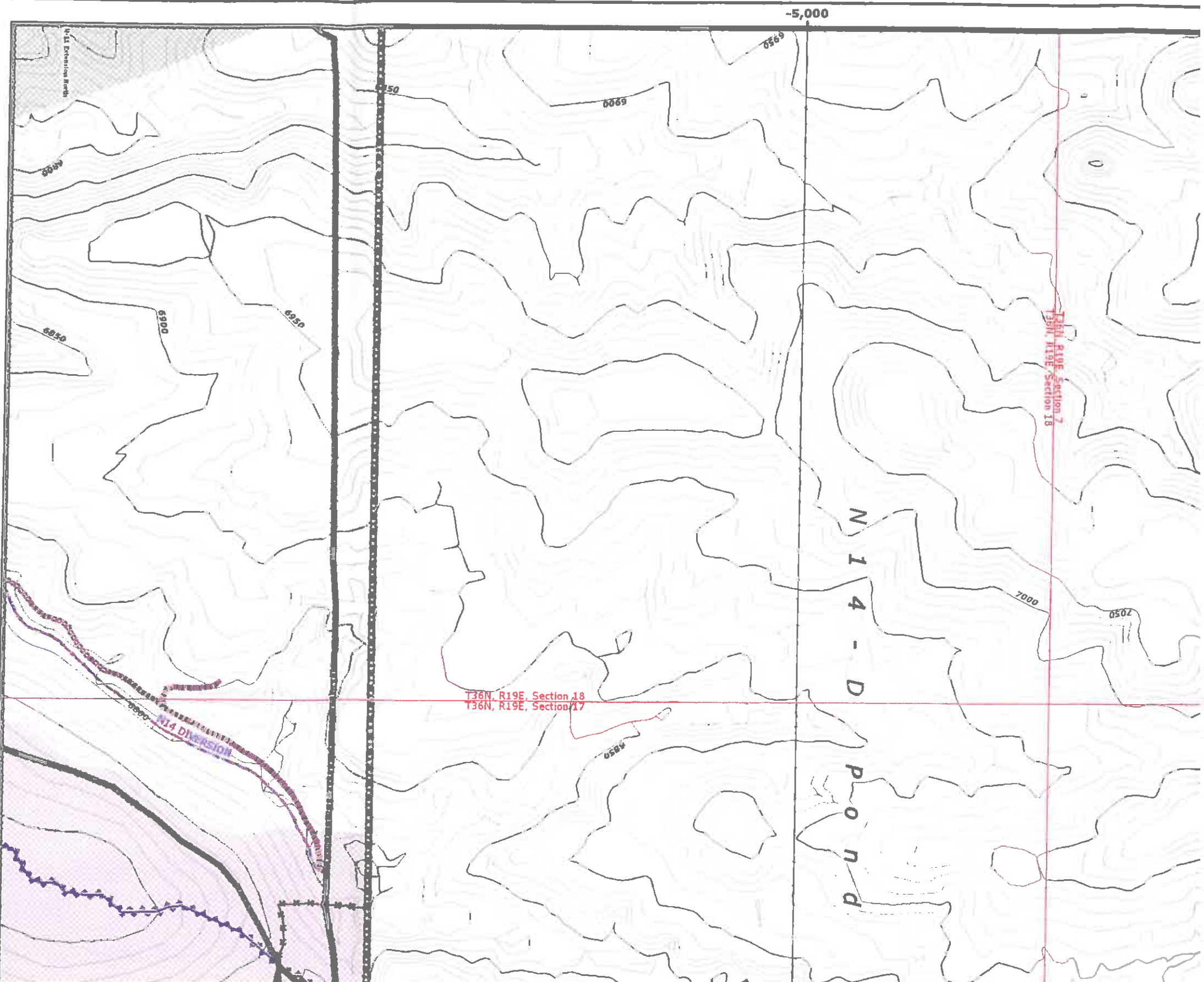


ENGINEER'S CERTIFICATION

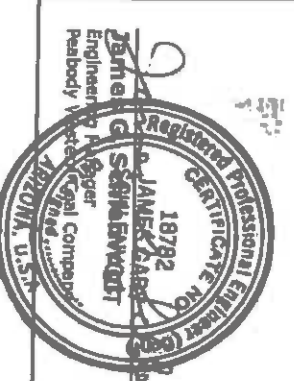
MAP REVISIONS

CHK'D	DATE	DESCRIPTION
JGS	Aug 15, 2004	OSM Response
JGS	Jan 14, 2005	NO9 5 Year Minneapin Rev
JGS	Jun 15, 2005	NO9 Facilities Revision
JGS	Sep 30, 2005	NO9 & NO6 Facilities Revision

- 85400 NOTES:**
1. SEE DRAWING NO. 85360 FOR TI
 2. SEE DRAWING NO. 85405 FOR TI OF THESE STRUCTURES.
 3. SEE DRAWING NO. 85460-85490



ENGINEER'S CERTIFICATION



James G. Schmeckert
 Engineer in Charge
 Peabody Vertical Construction
 Peabody, Wisconsin
 Date **JAN 04 2008**

MAP REVISIONS

CHKD	DATE	DESCRIPTION
JGS	Aug 15, 2004	OSM Response
JGS	Jan 14, 2005	NO5 5 Year Mileplan Rev
JGS	Jun 15, 2005	NO5 Facilities Revision
JGS	Sep 30, 2005	NO9 & NO6 Facilities Revision
JGS	Dec 15, 2005	NO9 Sequence Revision
JGS	Jan 20, 2006	OSM Response
JGS	Feb 4, 2006	NO6 Road As-Built Response
JGS	Feb 24, 2006	NO9 Facilities Revision
GW	Apr 12, 2006	TCPs and Roads Revision
JGS	May 9, 2006	NO9 Road As-Built
JGS	Jul 12, 2006	Airport Rd / WW6 Waterline Revision
JGS	Aug 30, 2006	Road Alignment Revision
JGS	Dec 21, 2007	Antenna Upgrade / Microwave Antenna updates

85400 NOTES:

1. SEE DRAWING NO. 85360 FOR TI
2. SEE DRAWING NO. 85405 FOR TI OF THESE STRUCTURES.
3. SEE DRAWING NO. 85460-85490
4. SEE DRAWING NO. 93500 FOR TI MONITORING SITES.
5. SEE CHAPTERS 6-7 AND 20-26 F AND RECLAMATION PLAN.

"DRAINAGE DIRECTION ON FILL EM MSHA SAFETY BERM EXIST".
 "PRIMARY ROADS HAVE BEEN CONG AS DESIGNED AND IN ACCORDANC.