

Major Water	-----	Coal Stockpiles	
PWCC	.....	Scoria Pit	
Highway	-----	Explosive Storage	
PWCC	.....	PWCC Buildings	
Non-PV	-----	Culvert Watershed Line	+++++
PWCC	=====	Existing Culverts	.....
Railroad	=====	Proposed Culverts	.....
Develop	*****	PWCC Watershed Line	-----
SPCC S	●	Direction of flow/ship	----->
		PWCC Airport	
		Sewer Lagoon	
		Existing Ponds	
		Proposed Ponds	
		Reclaimed Ponds	
		Mined Out Coal Resources	
		Coal Area	
		PWCC Pre-Law Road	=====
		PWCC AZ-0001 Primary Road	=====
		PWCC AZ-0001 Ancillary Road	=====
		PWCC AZ-0001 Ramp	=====
		PWCC AZ-0001D Primary Road	=====
		PWCC AZ-0001D Ancillary Road	=====
		PWCC AZ-0001D Ramp	=====
		Non-Mining Related Road	=====

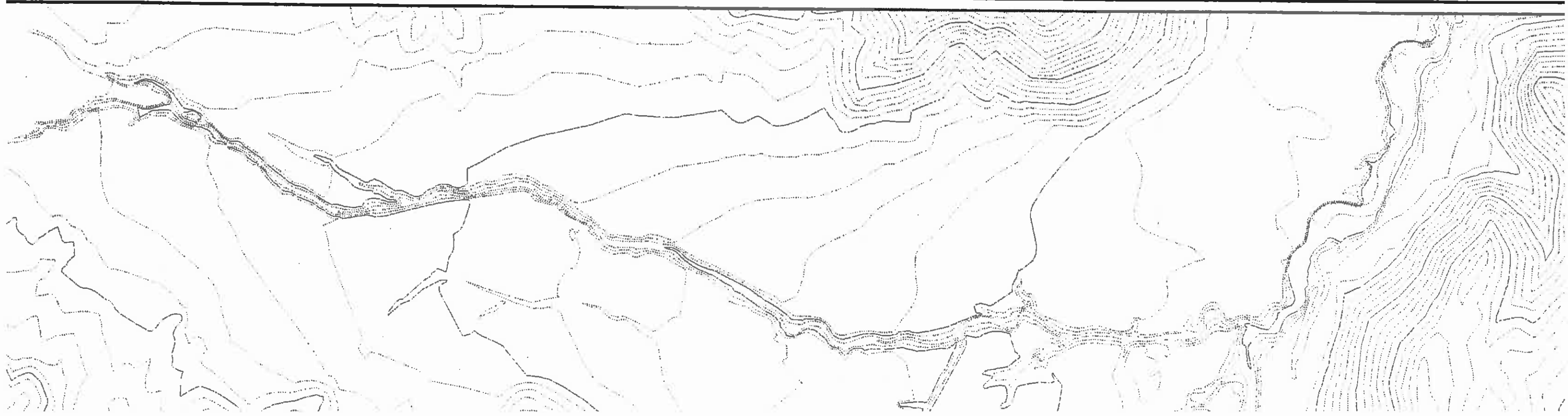
**ENGINEER'S CERTIFICATION**

JAMES G. SCHLENNVOGT  
 Engineering & Reclamation Manager  
 Peabody Western Coal Company

DATE DEC 15 2003

Feet

**PEABODY WESTERN**



- Major Drainage
  - Waterlines
  - WCC Sewage Facilities
  - Highwall (7-8-90)
  - WCC Powerline
  - Non-PWCC Powerline
  - WCC Conveyor
  - Railroad
  - WCC Water Well
  - PCC Sites
- 
- Navajo-Hopi Partition Line
  - Pwcc Lease Line
  - Pre-Law Line
  - Existing AZ-001D Permit Line
  - Diversions
  - BTCA Sites - Straw Bales
  - BTCA Sites - Rock Checkdam
  - BTCA Sites - Silt Fence
  - BTCA Sites - Riprap
  - BTCA Sites - Revegetation

H6	J6	K6	L6	M6	N6
H7	J7	K7	L7	M7	N7
K8	L8	M8	N8		
K9	L9	M9	N9		
K10	L10	M10	N10		
K11	L11	M11	N11		
				M12	

**NOTES:**

1. SEE DRAWING NO. 85380 FOR THE MINING AFFECTED LANDS.
2. SEE DRAWING NO. 85405 FOR THE GENERAL LOCATION OF THESE STRUCTURES.
3. SEE DRAWING NO. 85460-85490 FOR THE MINE SUPPORT FACILITIES MAP.
4. SEE DRAWING NO. 83500 FOR THE LOCATION OF THE ENVIRONMENTAL MONITORING SITES.
5. SEE CHAPTERS 6-7 AND 20-26 FOR INFORMATION ON THE FACILITIES AND RECLAMATION PLAN.

"DRAINAGE DIRECTION ON FILL EMBANKMENTS ONLY APPLY WHEN MSHA SAFETY BERM EXISTS".

"PRIMARY ROADS HAVE BEEN CONSTRUCTED OR RECONSTRUCTED AS DESIGNED AND IN ACCORDANCE WITH THE APPROVED PLAN."

CHKD	DATE	DESCRIPTION
JGS	03/01/95	FIVE YEAR PERMIT REVISION
JGS	10/18/95	E.O. SITES REVISION
JGS	04/24/96	N.O.V. RESPONSE
JGS	12/02/86	FIVE YEAR PERMIT REVISION
JGS	02/13/88	J21 POND REVISION
JGS	12/07/01	FIVE YEAR MINE PLAN REVISION
JGS	01/20/04	5 YEAR MINE PLAN REV.



# DRAINAGE AREA AND FACILITIES MAP

DRAWING NO. 85400

**Kayenta Mine, Black Mesa Complex  
PO Box 650, Kayenta, Arizona 86033**



(SHEET M12)

<b>Produced For:</b> PWCC	<b>Map By:</b> Map By: [Name]
<b>Map Scale:</b> 1' = 400'	<b>Contour Interval:</b> 10 FT.
<b>Photo Date:</b> N/A	<b>Photo Resolution:</b> N/A
<b>Plot Date:</b> January 21, 2004	<b>Plot Date:</b> January 21, 2004

REVISIONS		
CHK'D	DATE	DESCRIPTION
JGS	03/01/95	FIVE YEAR PERMIT REVISION
JGS	10/18/95	E.Q. SITES REVISION
JGS	04/24/98	N.O.V. RESPONSE
JGS	12/02/98	FIVE YEAR PERMIT REVISION
JGS	02/13/98	J21 POND REVISION
JGS	12/07/01	FIVE YEAR MINE PLAN REVISION
JGS	01/20/04	5 YEAR MINE PLAN REV.

**NOTES:**

85360 FOR THE MINING AFFECTED LANDS.

85405 FOR THE GENERAL LOCATION OF THESE

85460-85490 FOR THE MINE SUPPORT FACILITIES MAP

93500 FOR THE LOCATION OF THE ENVIRONMENTAL

AND 20-28 FOR INFORMATION ON THE FACILITIES

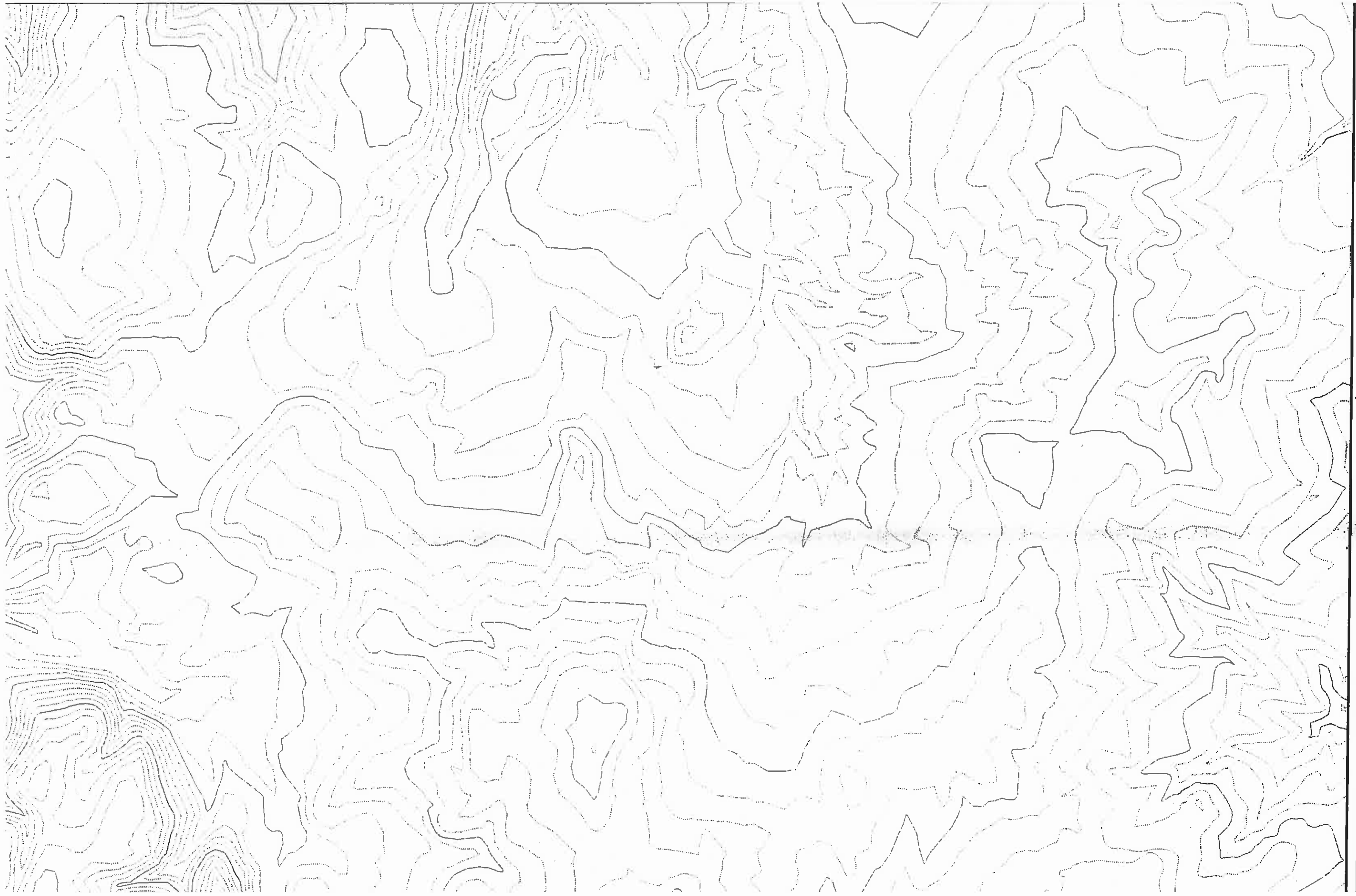
PLAN.

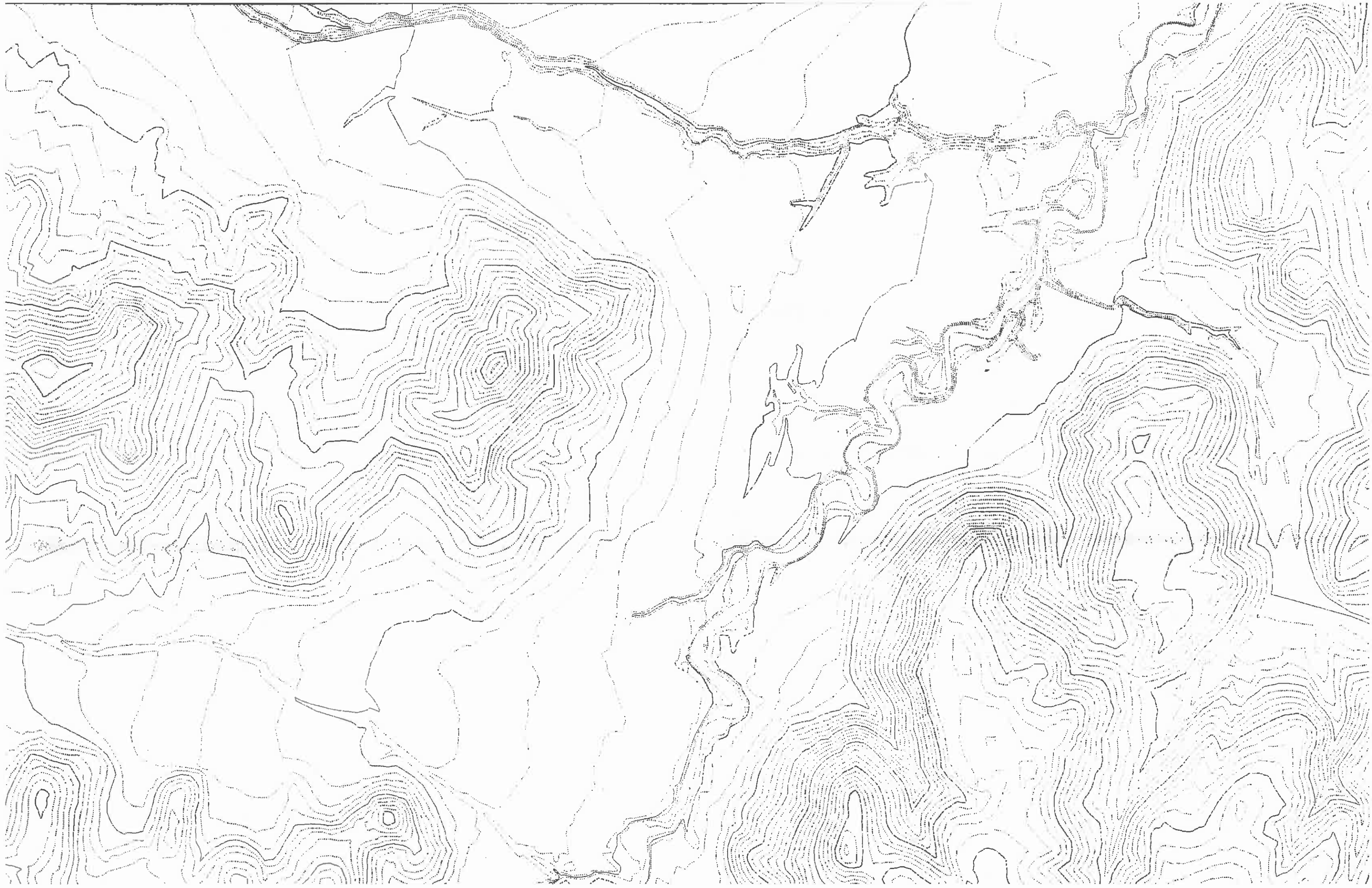
ON FILL EMBANKMENTS ONLY APPLY WHEN

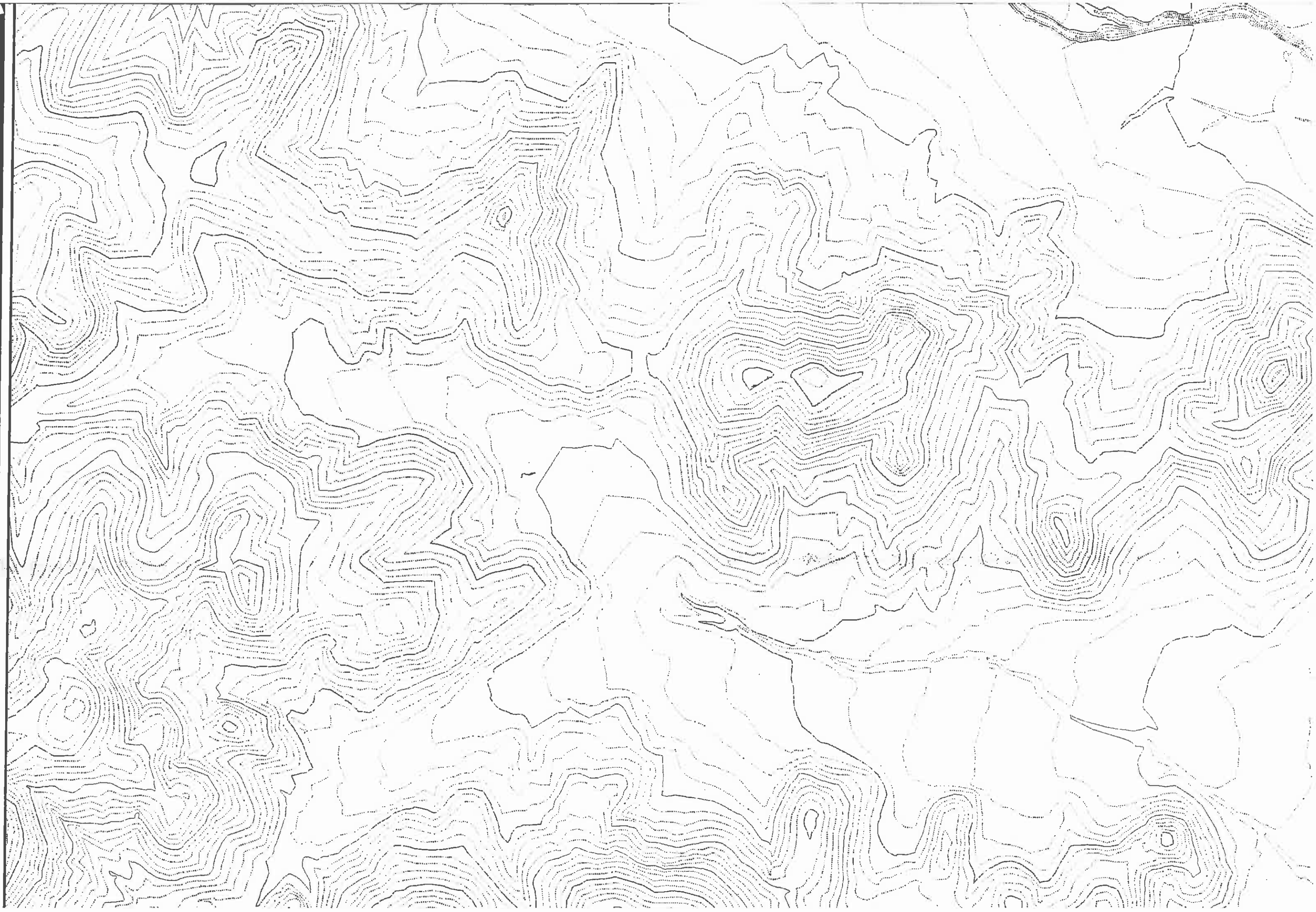
EXIST.

VE BEEN CONSTRUCTED OR RECONSTRUCTED

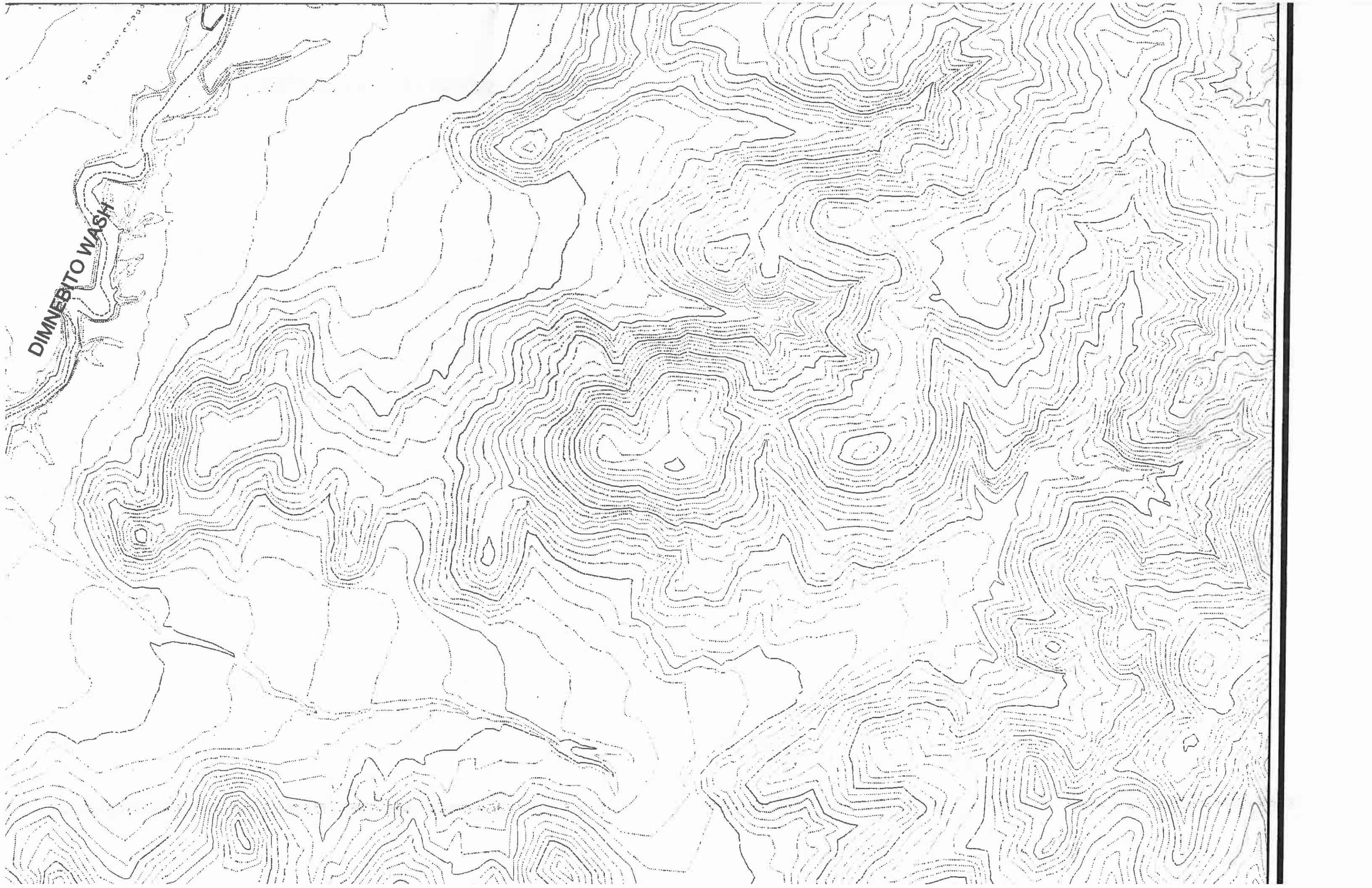
ACCORDANCE WITH THE APPROVED PLAN.

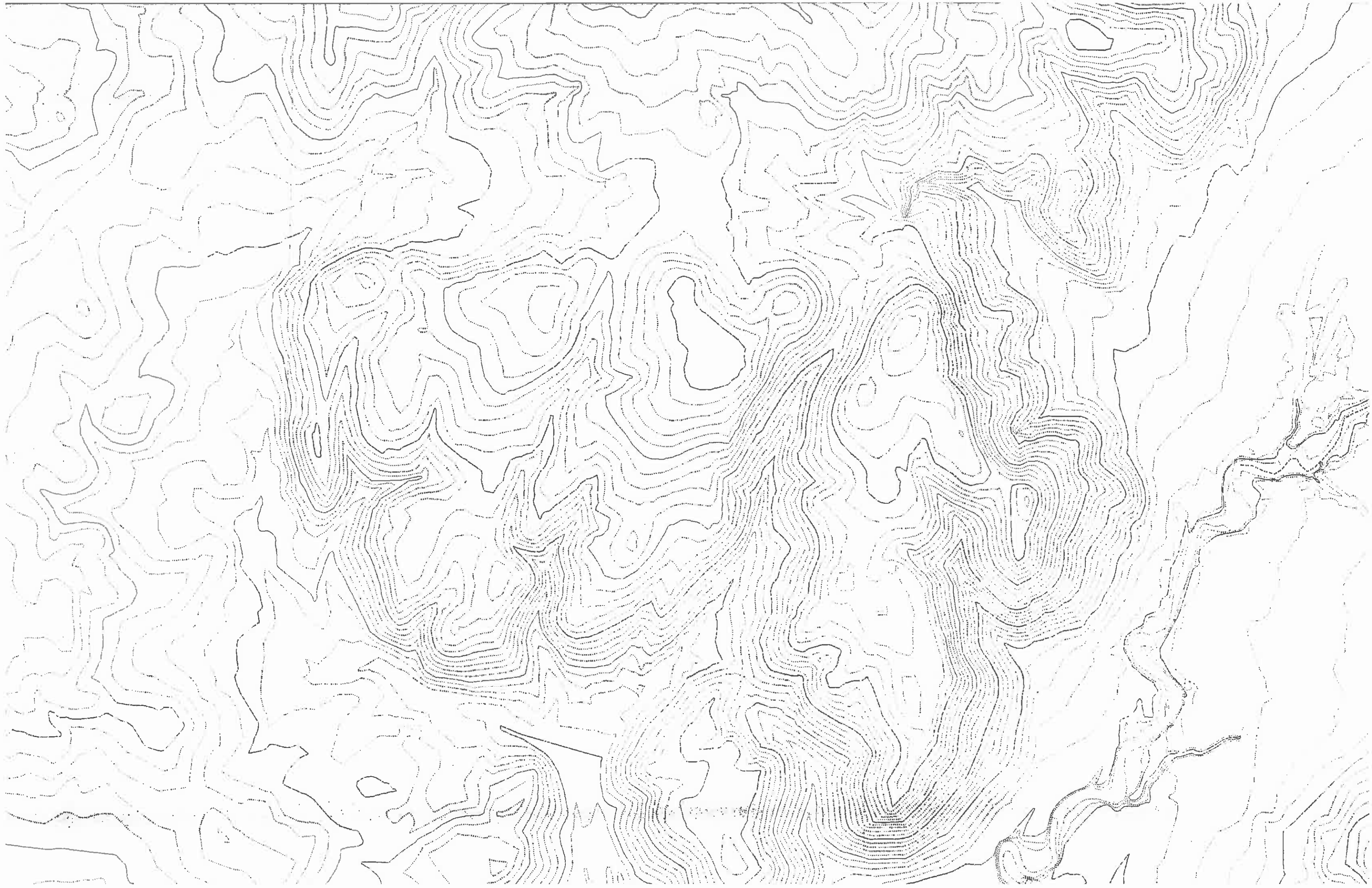




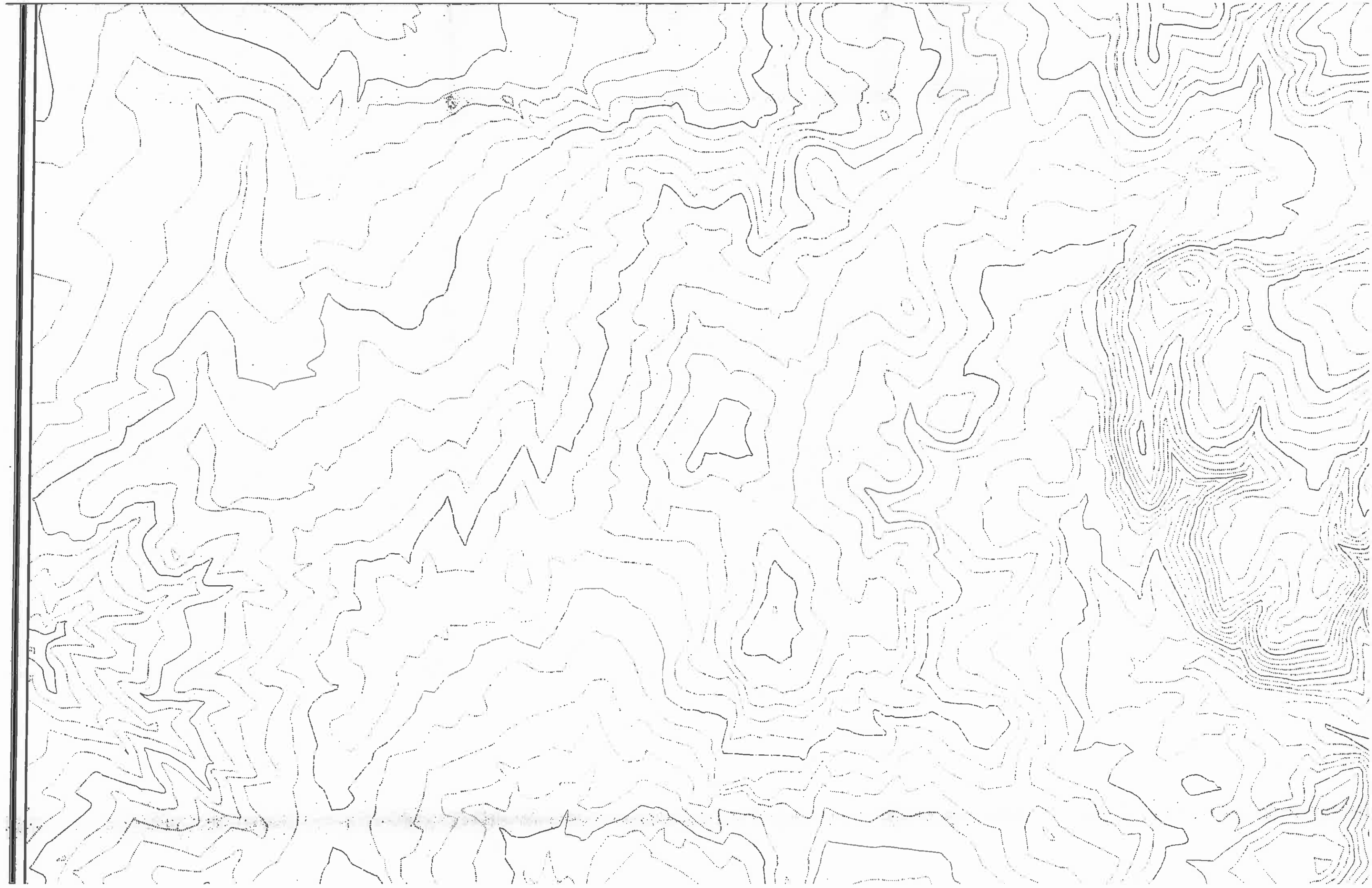


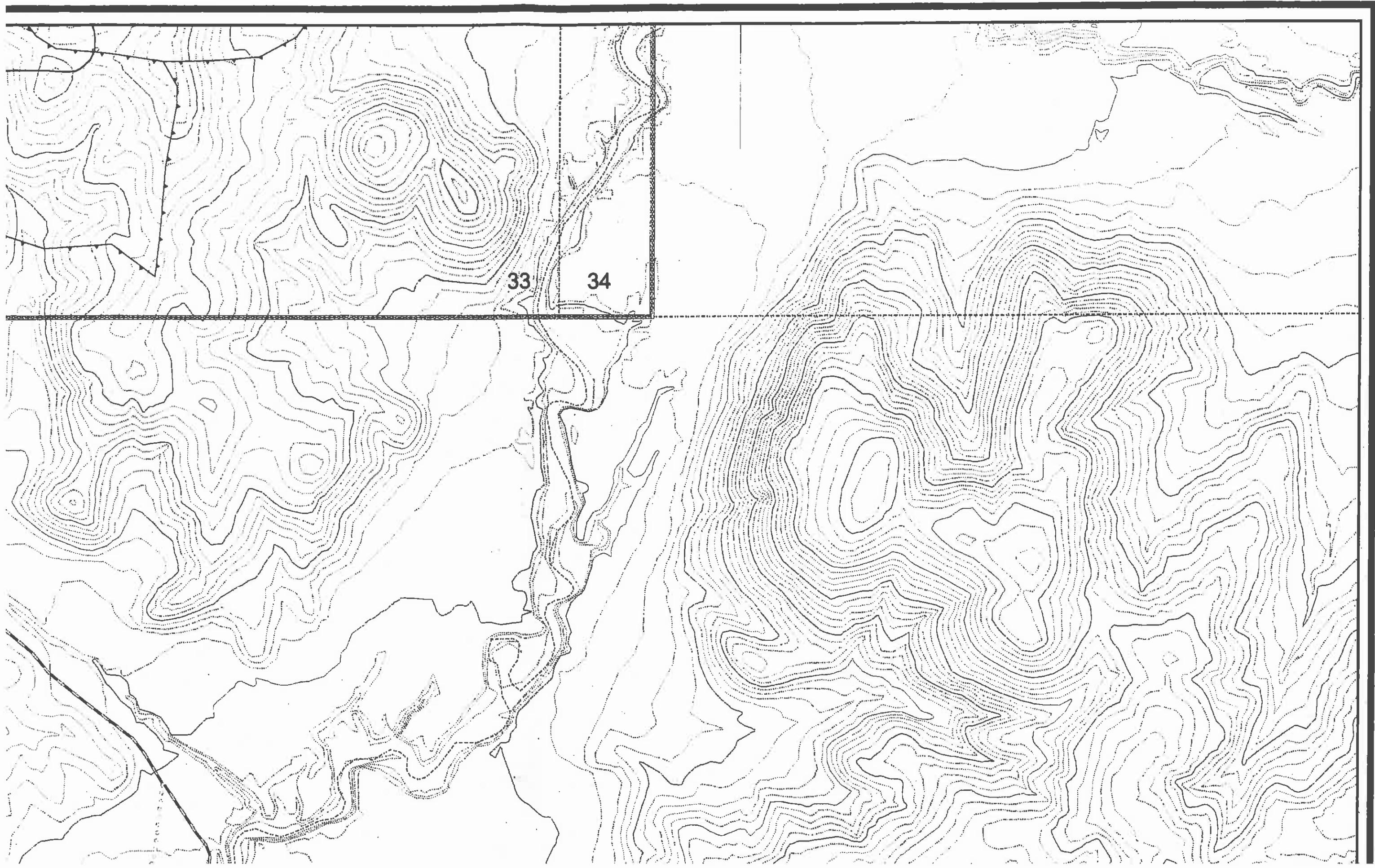
DIMNEBITO WASH





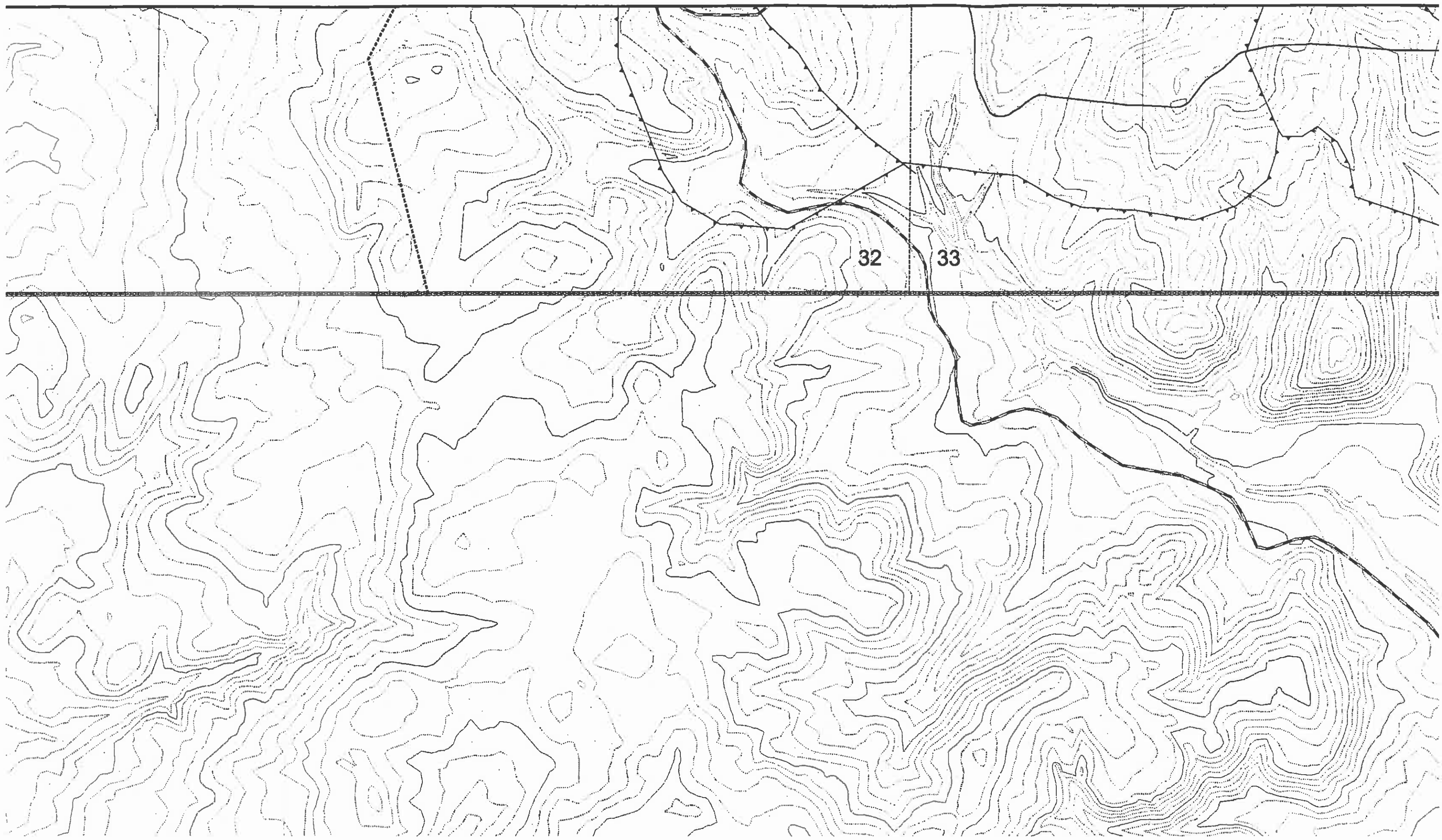


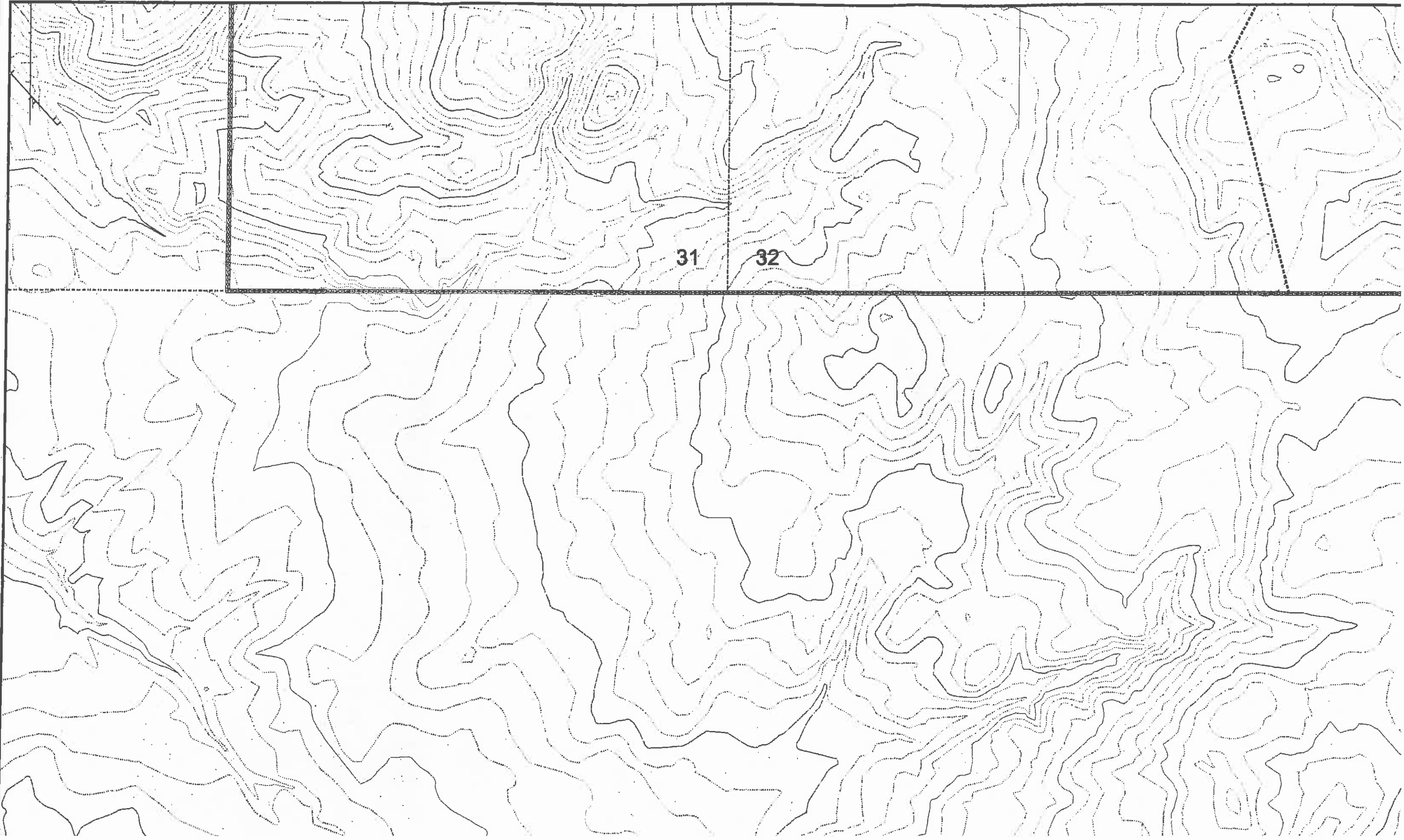




33

34





31

32