

Major Drainage	-----	Coal Stockpiles		PWCC Airport		PWCC Pre-Law Road	
Waterlines	-----	Scoria Pit		Sewer Lagoon		PWCC AZ-0001 Primary Road	
PWCC Sewage Fan	Explosive Storage		Existing Ponds		PWCC AZ-0001 Ancillary Road	
Highwall (7-8-90)	-----	PWCC Buildings		Proposed Ponds		PWCC AZ-0001D Ramp	
PWCC Powerline	o-o-o-o	Culvert Waterhed Lines		Reclaimed Ponds		PWCC AZ-0001D Primary Road	
Non-PWCC Powerline	-----	Existing Culverts		Mined Out Coal Resources		PWCC AZ-0001D Ancillary Road	
PWCC Conveyor	=====	Proposed Culverts		Coal Area		PWCC AZ-0001D Ramp	
Railroad	=====	PWCC Waterhed Line	-----			Non-Mining Related Road	
Navajo Water Well	☼	Direction of flow/shp	----->				
SPCC Sites	●						

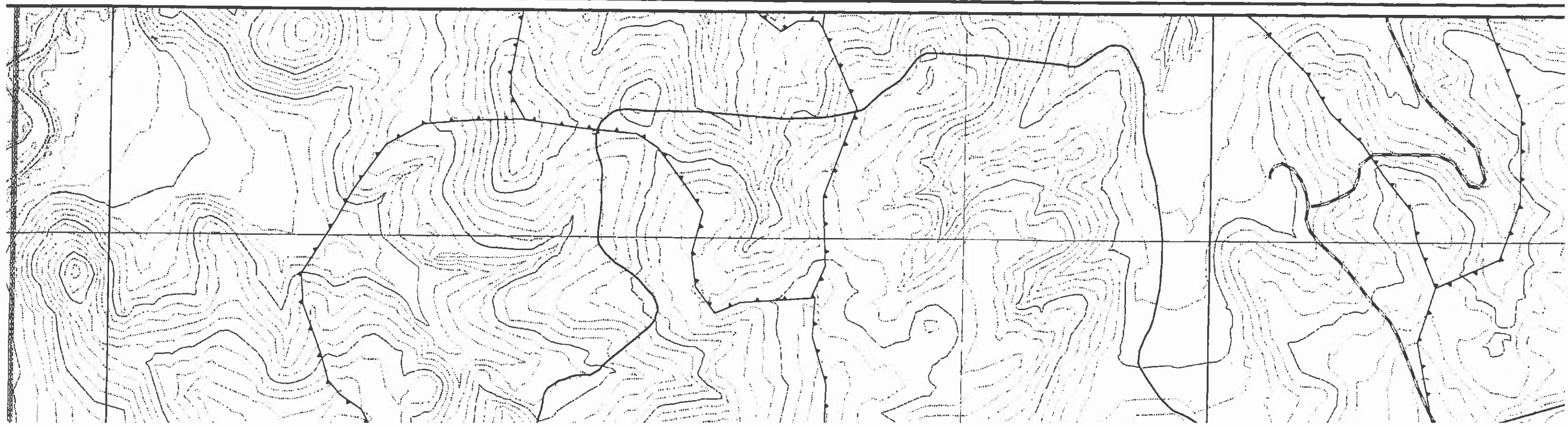
ENGINEER'S CERTIFICATION

JAMES G. SCHLEMOVGT
 Engineering & Reclamation Manager
 Peabody Western Coal Company

DATE DEC 15 2003

Feet





- Navajo- Hopi Partition Line
- Pwcc Lease Line
- Pre-Law Line
- Existing AZ-0001D Permit Line
- Diversions
- BTCA Sites - Straw Bales
- BTCA Sites - Rock Checkdam
- BTCA Sites - Silt Fence
- BTCA Sites - Riprap
- BTCA Sites - Revegetation

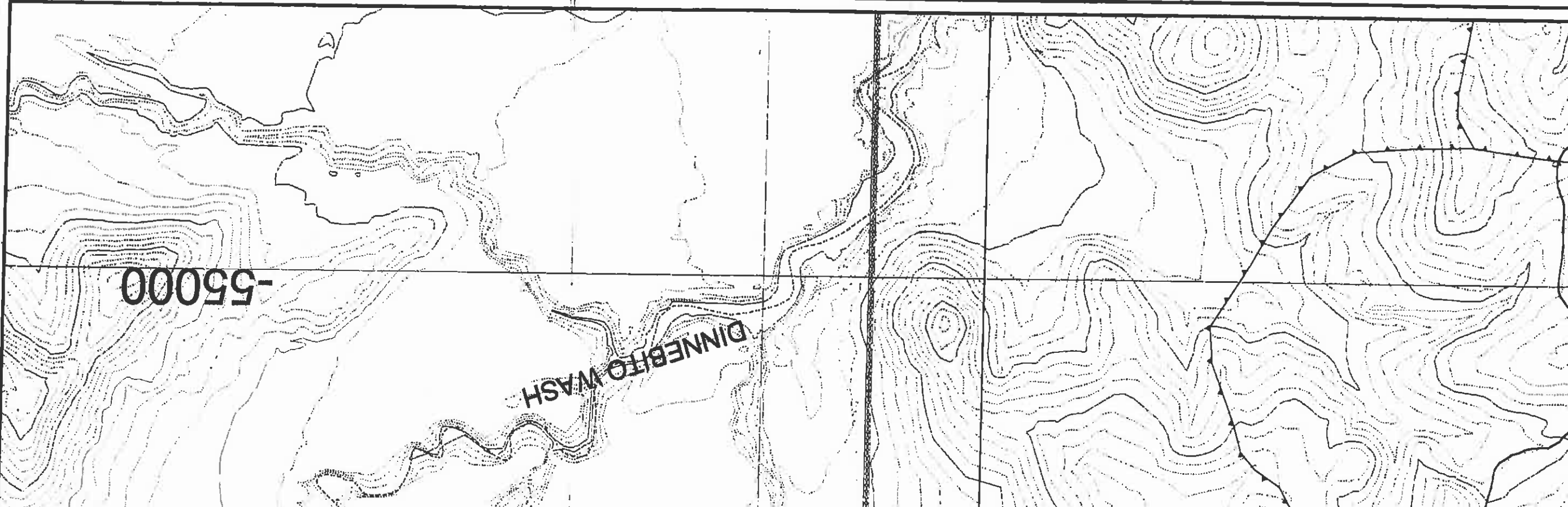
H6	J6	K6	L6	M6	N6
H7	J7	K7	L7	M7	N7
H8	J8	K8	L8	M8	N8
H9	J9	K9	L9	M9	N9
H10	J10	K10	L10	M10	N10
H11	J11	K11	L11	M11	N11
H12	J12	K12	L12	M12	N12

NOTES:

1. SEE DRAWING NO. 85380 FOR THE MINING AFFECTED LANDS.
2. SEE DRAWING NO. 86405 FOR THE GENERAL LOCATION OF THESE STRUCTURES.
4. SEE DRAWING NO. 83500 FOR THE LOCATION OF THE ENVIRONMENTAL MONITORING SITES.
5. SEE CHAPTERS 6-7 AND 20-28 FOR INFORMATION ON THE FACILITIES AND RECLAMATION PLAN.
- "DRAINAGE DIRECTION ON FILL EMBANKMENTS ONLY APPLY WHEN MSHA SAFETY BERM EXIST."
- "PRIMARY ROADS HAVE BEEN CONSTRUCTED OR RECONSTRUCTED AS DESIGNED AND IN ACCORDANCE WITH THE APPROVED PLAN."

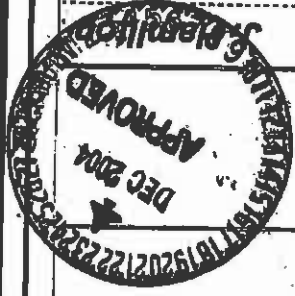
CHKD	DATE	DESCRIPTION
JGS	03/01/95	FIVE YEAR PERMIT REVISION
JGS	10/18/95	E.G. SITES REVISION
JGS	04/24/96	N.O.V. RESPONSE
JGS	12/02/96	FIVE YEAR PERMIT REVISION
JGS	02/13/98	J21 POND REVISION
JGS	12/07/01	FIVE YEAR MINE PLAN REVISION
JGS	08/01/02	OSM RESPONSE
JGS	01/20/04	5 YEAR MINE PLAN REV.

Prod Map Photo



DRAINAGE AREA AND FACILITIES MAP
 DRAWING NO. 85400
 (SHEET M11)

Kayenta Mine, Black Mesa Complex
PO Box 650, Kayenta, Arizona 86033



Produced For: PWCC	Map By:
Map Scale: 1' = 400'	Contour Interval: 10 FT.
Photo Date: N/A	Photo Resolution: N/A
Plot Date: January 21, 2004	

s:\gilelm_data_n88\projects\85400_n89rev2.epr

CHKD	DATE	DESCRIPTION
JGS	03/01/95	FIVE YEAR PERMIT REVISION
JGS	10/18/95	E.G. SITES REVISION
JGS	04/24/96	N.O.V. RESPONSE
JGS	12/02/96	FIVE YEAR PERMIT REVISION
JGS	02/13/98	J21 POND REVISION
JGS	12/07/01	FIVE YEAR MINE PLAN REVISION
JGS	08/01/02	OSM RESPONSE
JGS	01/20/04	5 YEAR MINE PLAN REV.

MINING AFFECTED LANDS.
 GENERAL LOCATION OF THESE
 LOCATION OF THE ENVIRONMENTAL
 INFORMATION ON THE FACILITIES
 COMMENTS ONLY APPLY WHEN
 RUCTED OR RECONSTRUCTED
 WITH THE APPROVED PLAN.

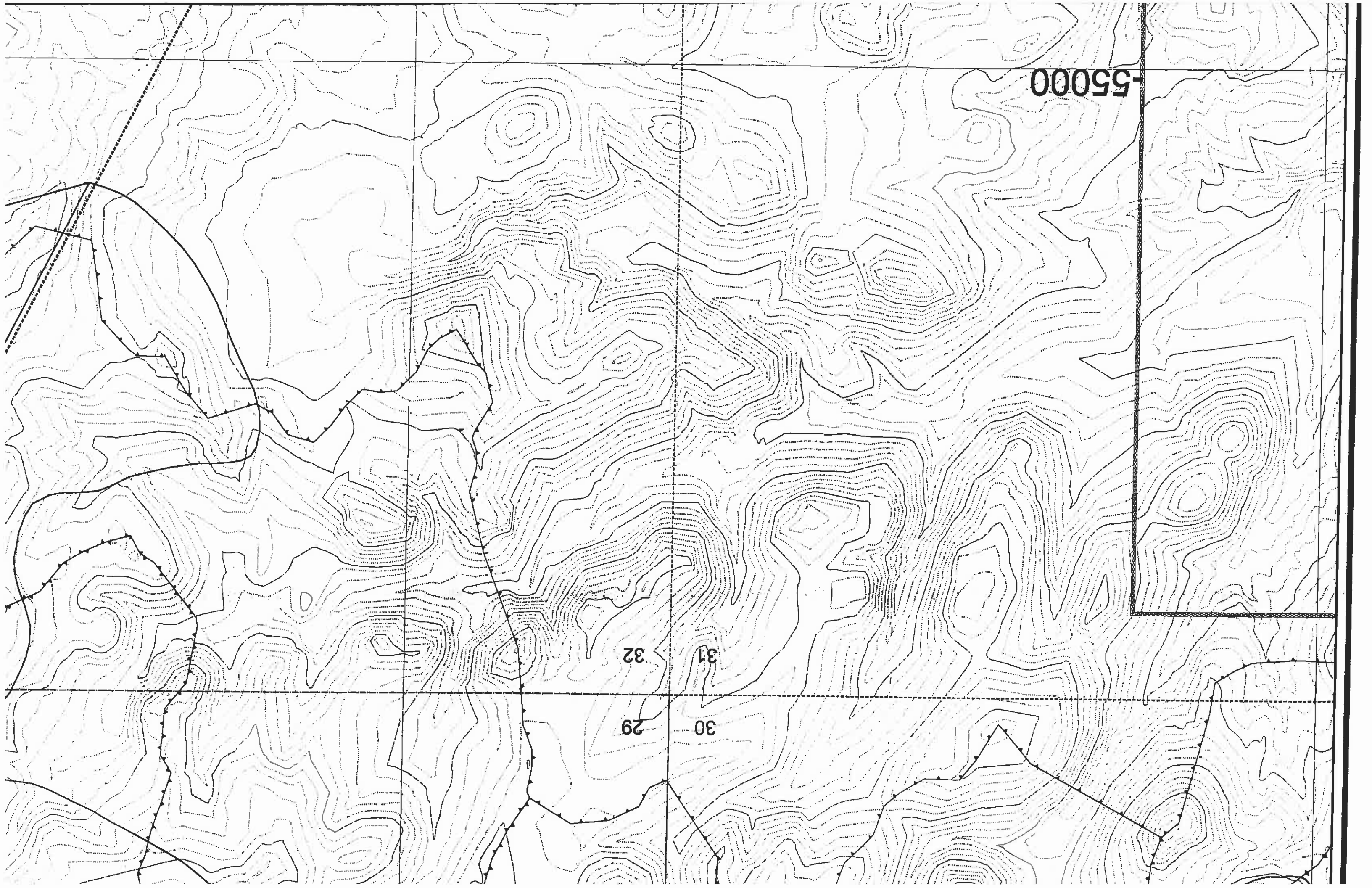
55000-

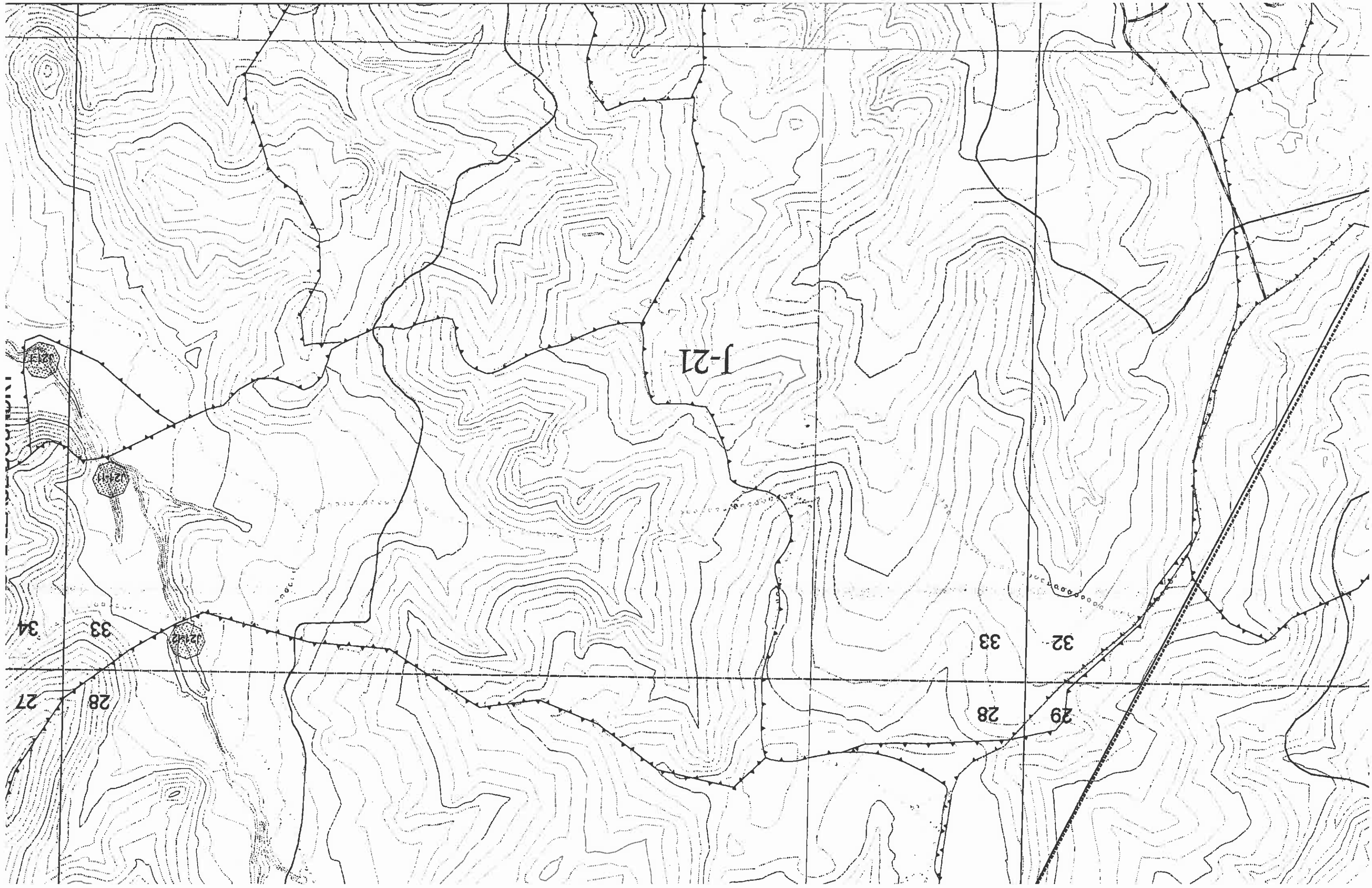
32

31

29

30





J-21

34

33

27

28

33

32

28

29

-55000

DINNEBITO WASH

JUA TRACT 2 LEASE BOUNDARY

12111

12111

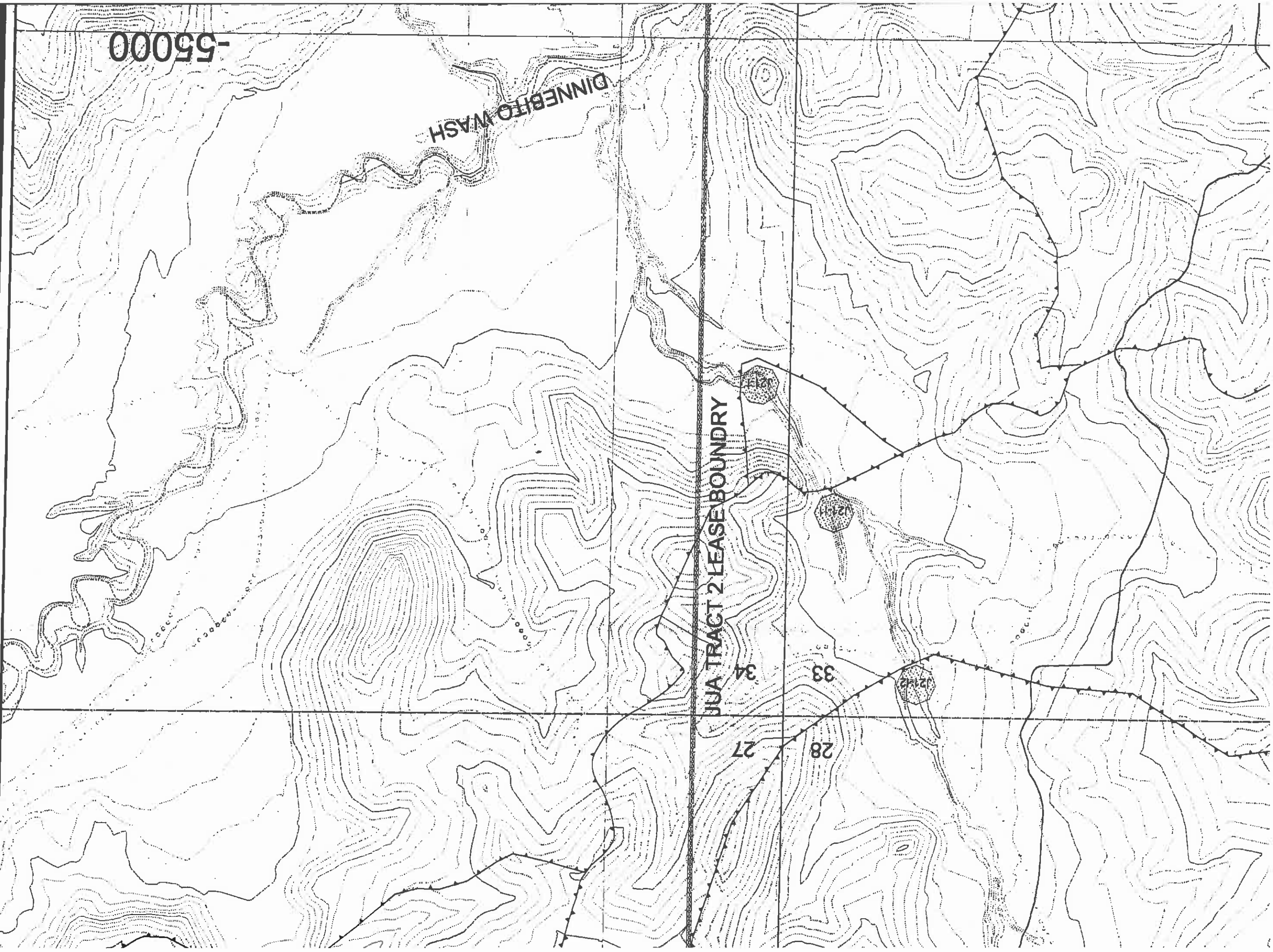
12112

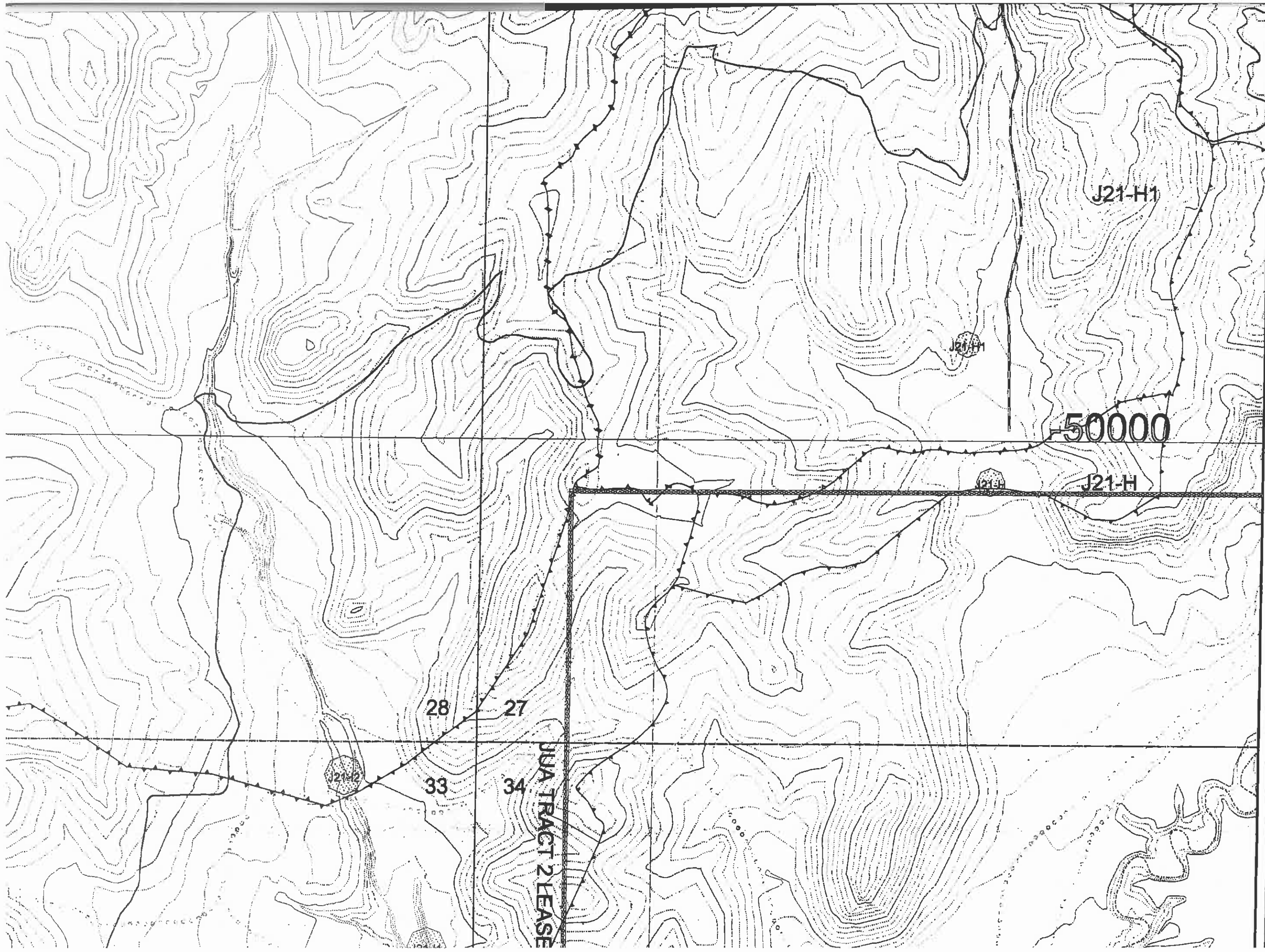
34

33

27

28





J-23

DRAINAGE BOUNDARY
DRAINAGE BOUNDARY

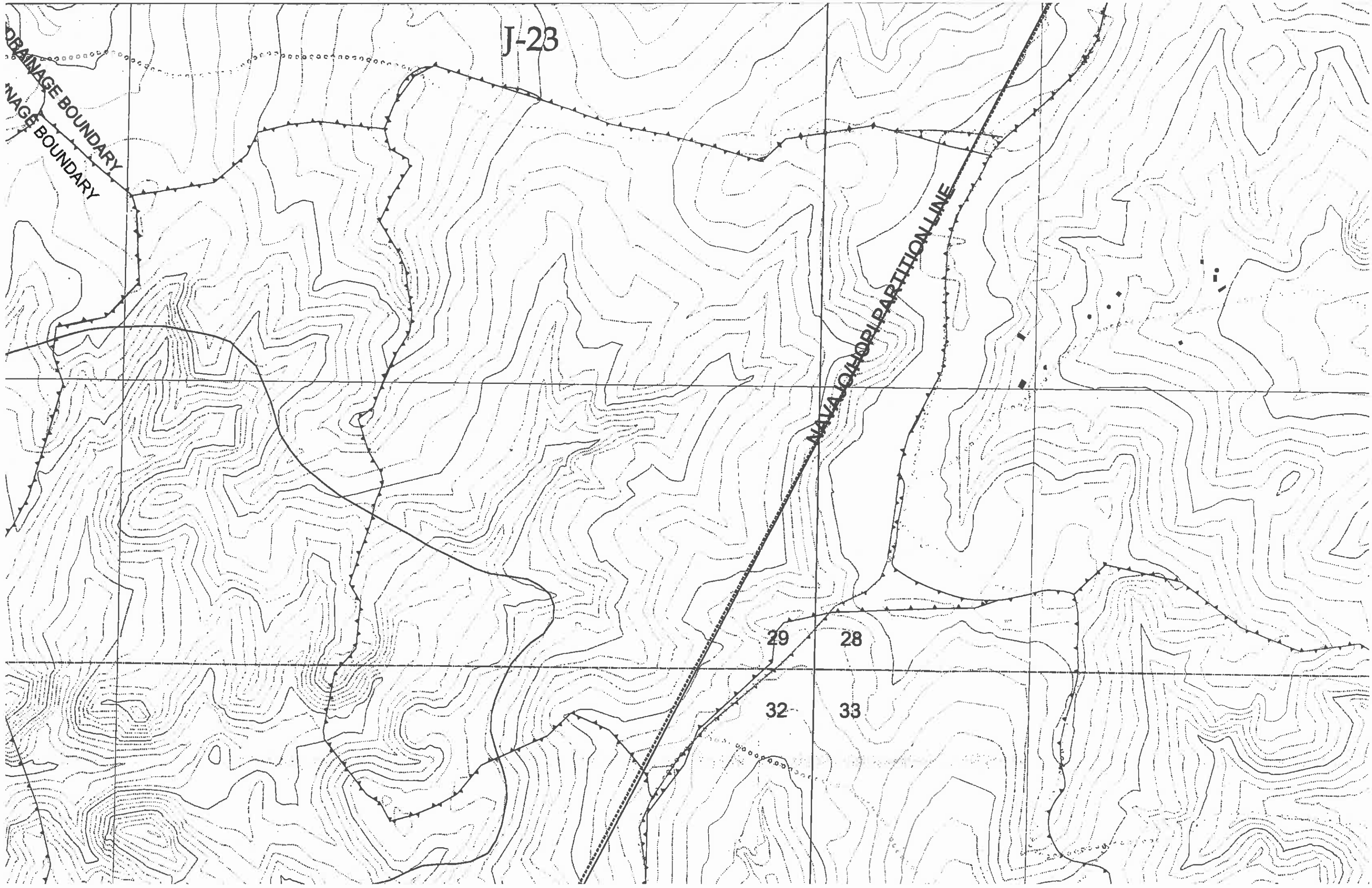
NAVIGATIONAL PARTITION LINE

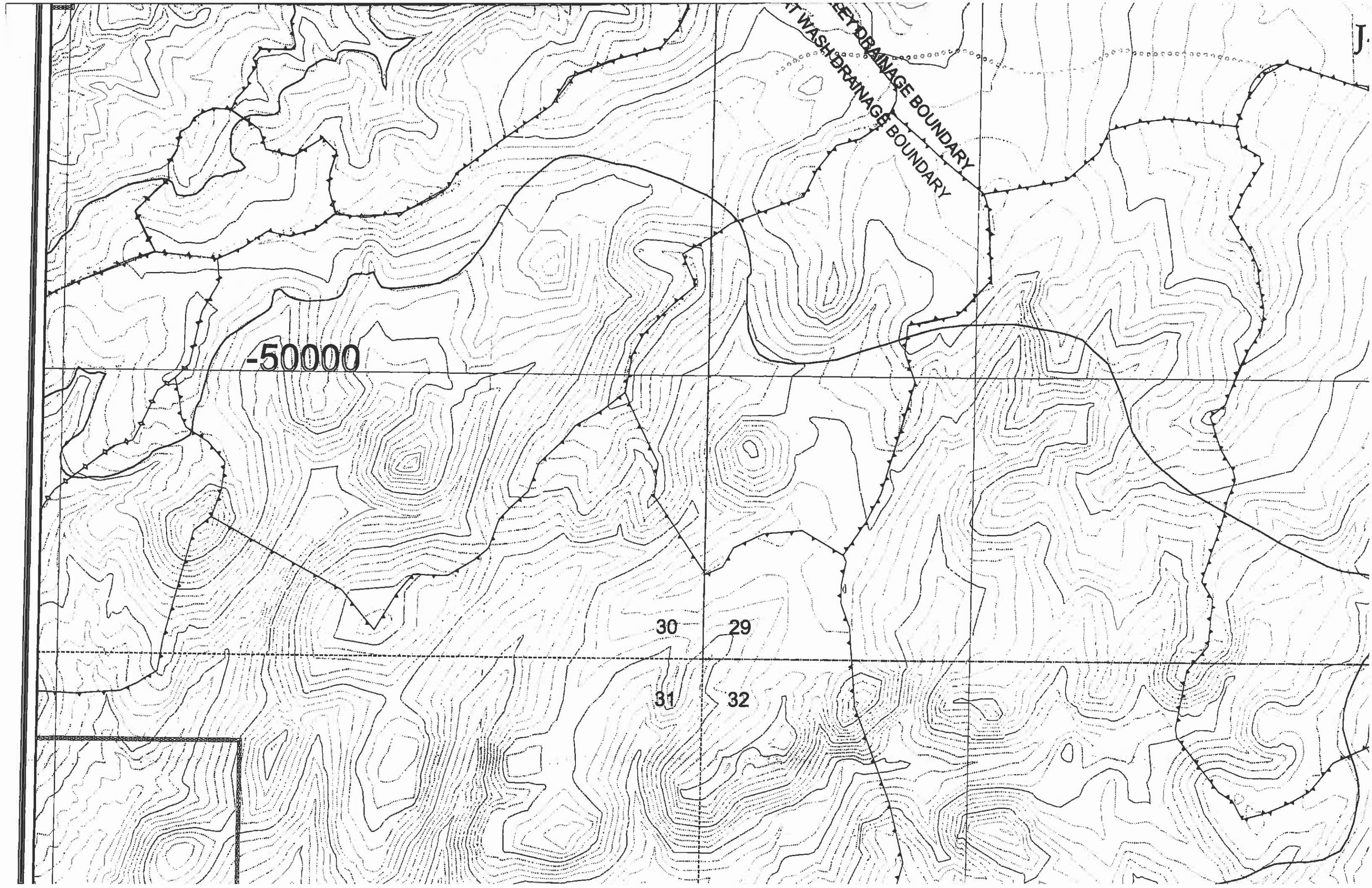
29

28

32

33





50000

30

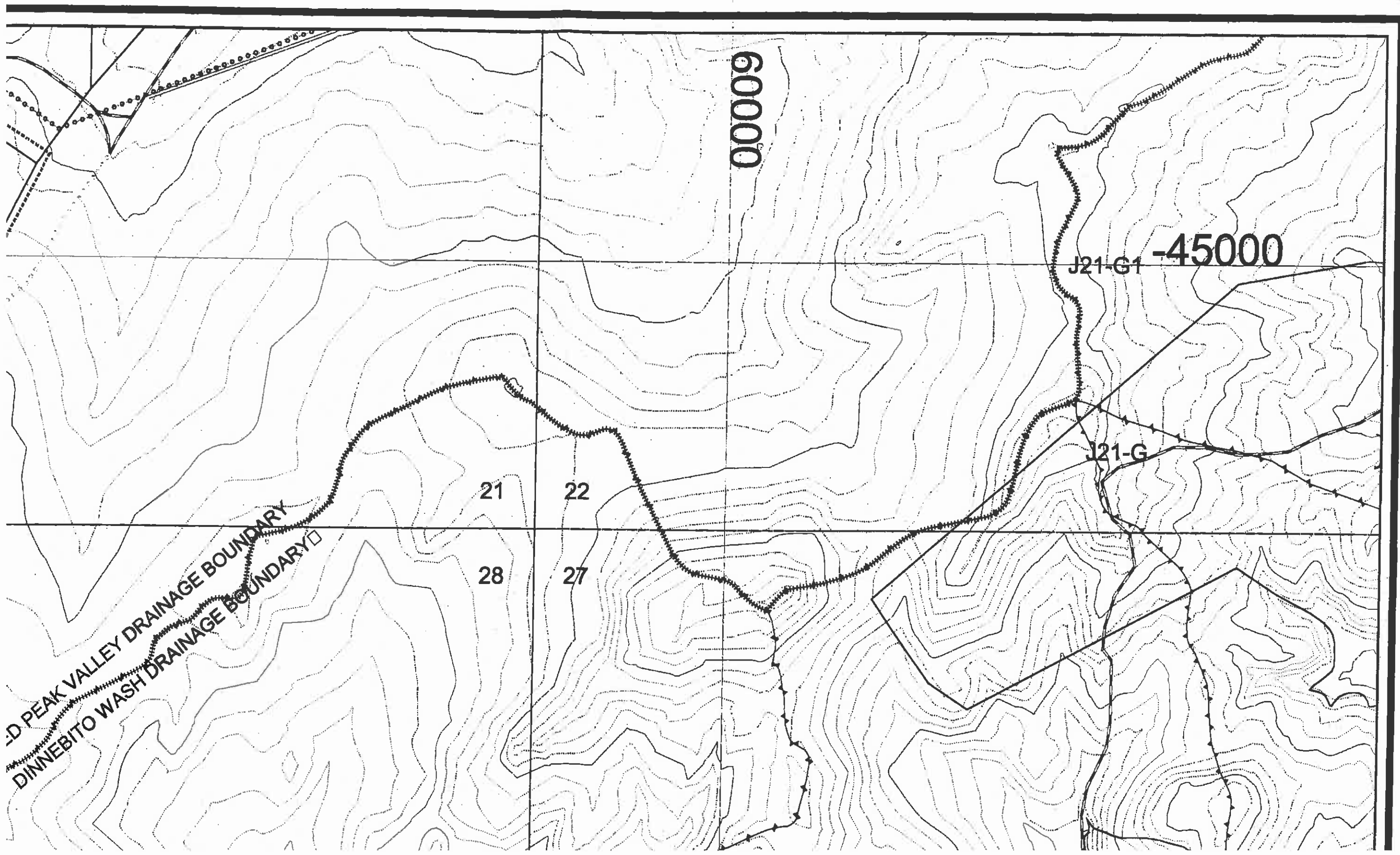
29

31

32

KEY DRAINAGE BOUNDARY
WASH DRAINAGE BOUNDARY

J.



60000

J21-G1 -45000

J21-G

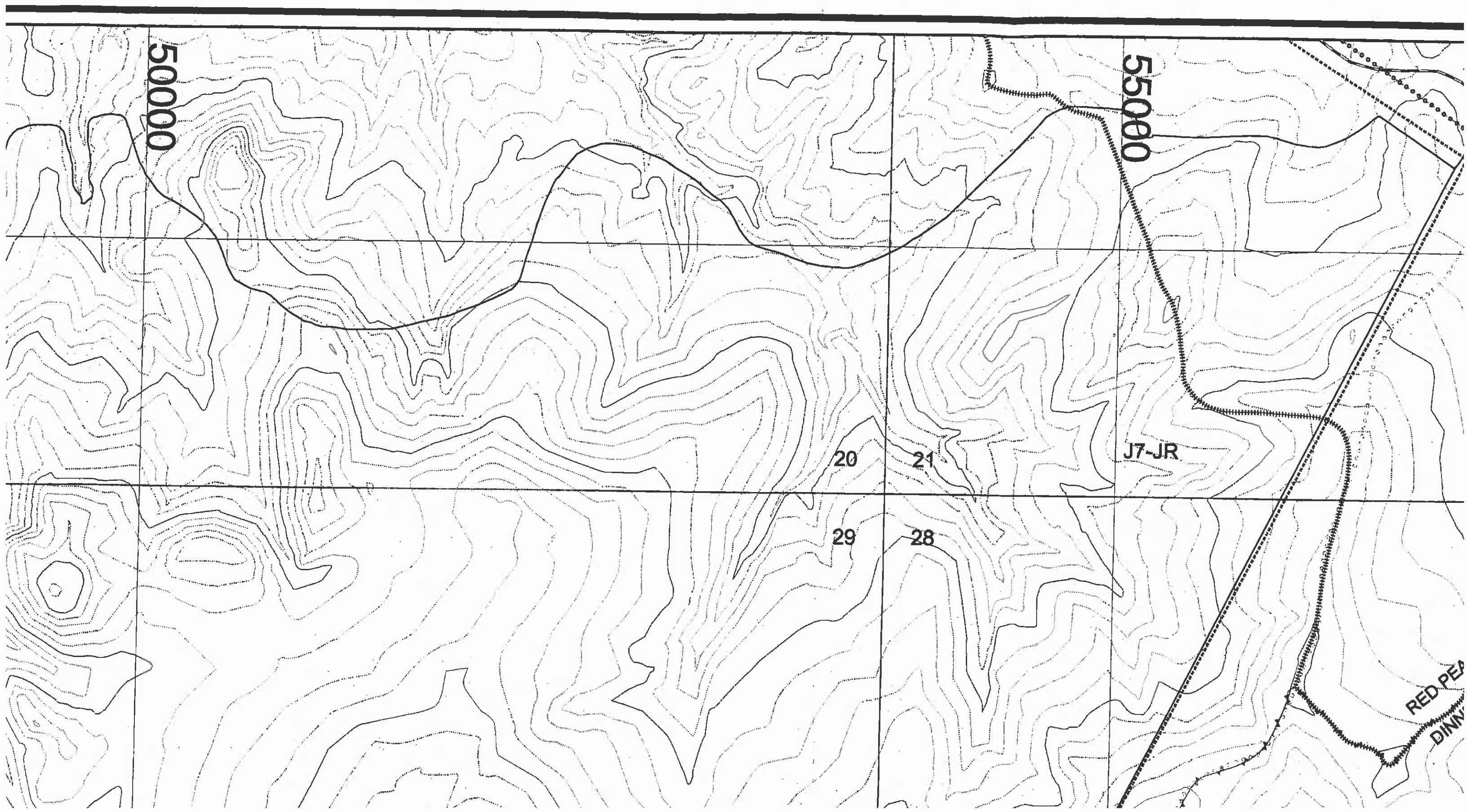
21

22

28

27

D PEAK VALLEY DRAINAGE BOUNDARY
DINNEBITO WASH DRAINAGE BOUNDARY



50000

55000

20

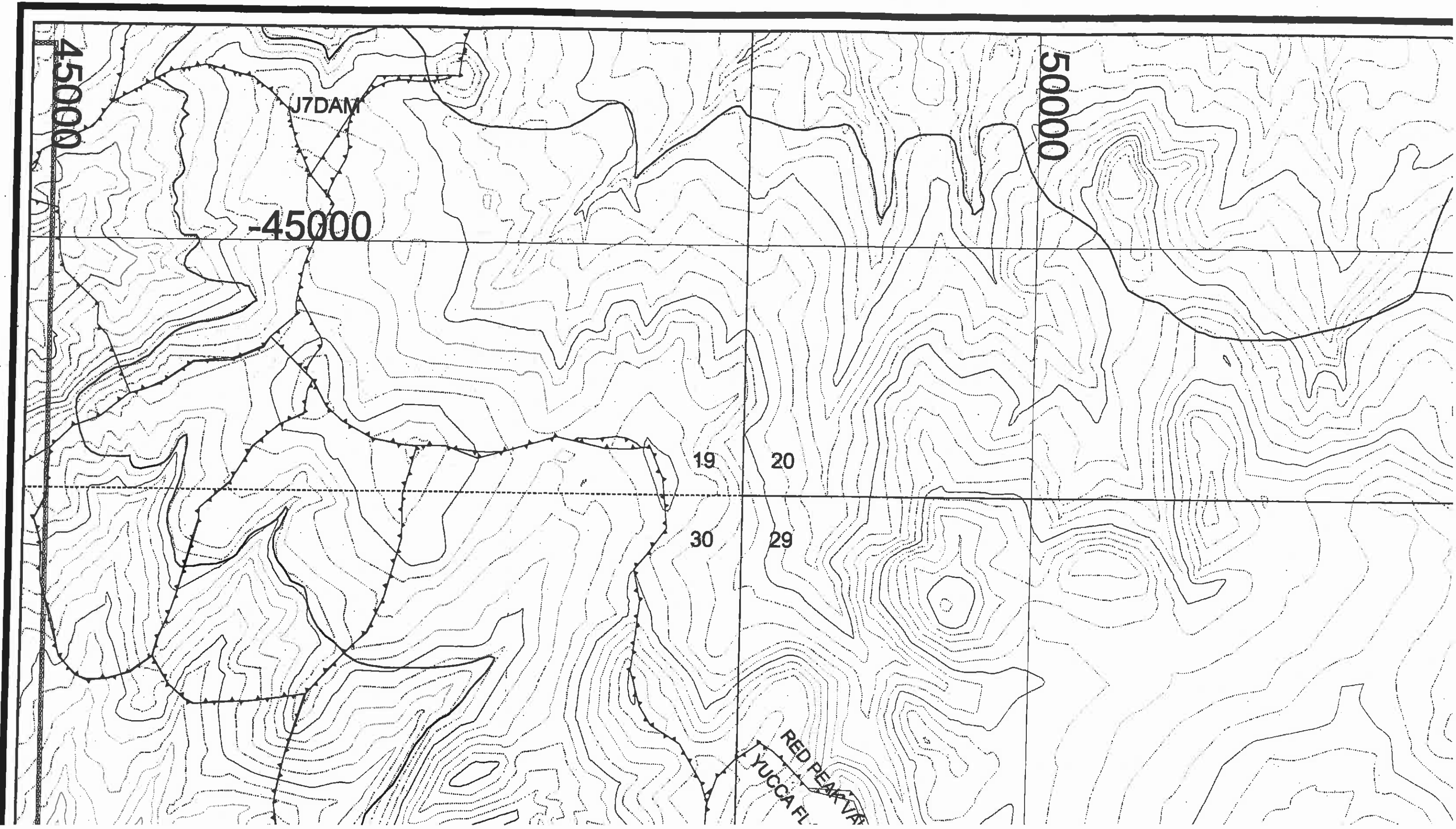
21

J7-JR

29

28

RED PEAK
DINW



45000

50000

-45000

J7DAM

19

20

30

29

RED PEAK V
YUCCA FL