

ENGINEER'S CERTIFICATION



Gary Altsisi P.E.
Reclamation Supervisor
Peabody Western Coal Company

EXPIRES: 09/30/11

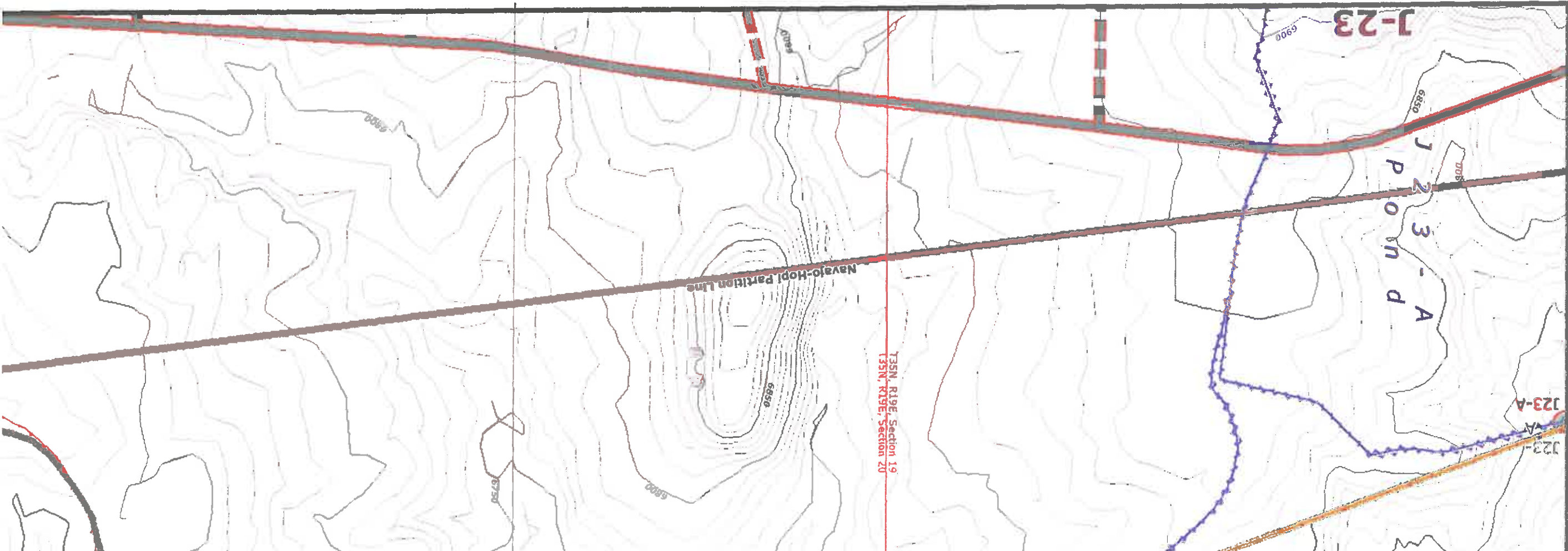
| CHK'D | DATE | DESCRIPTION |
|-------|--------------|---|
| JGS | Dec 15, 2005 | N09 Sequence Revision |
| JGS | Jan 20, 2006 | QSM Response |
| JGS | Feb 4, 2006 | N06 Road As-Built Response |
| JGS | Feb 24, 2006 | N09 Facilities Revision |
| GW | Apr 12, 2006 | TCPs and Roads Revision |
| JGS | May 9, 2006 | N09 Road As-Built |
| JGS | Jul 12, 2006 | Alport Rd / WWS Watering Revision |
| JGS | Aug 30, 2006 | Road Alignment Revision |
| JGS | Dec 21, 2007 | Software Update / Non-wide feature update |
| JGS | Apr 25, 2008 | Alport Revision |
| JGS | Jun 17, 2008 | QSM Response |
| GW | Oct 1, 2008 | J-19 Diversion As-Built, N09 Road Keying Area |
| GA | Mar 27, 2009 | N-9-02 RTCA |
| GW | Jun 25, 2009 | J-19 Diversion As-Built |

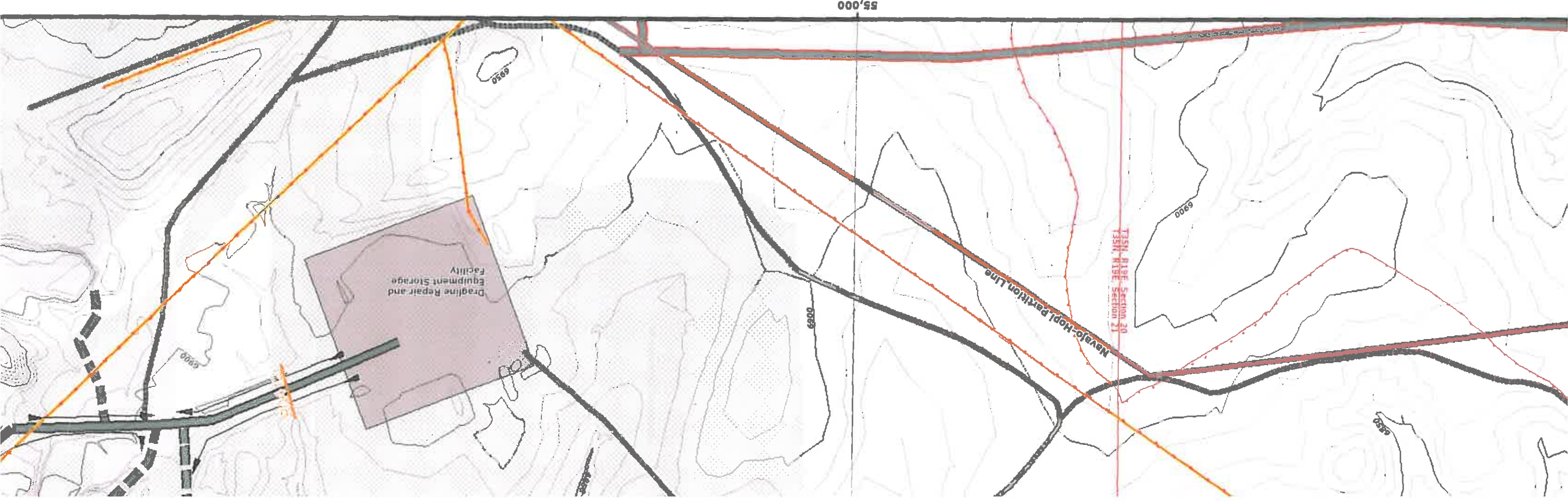
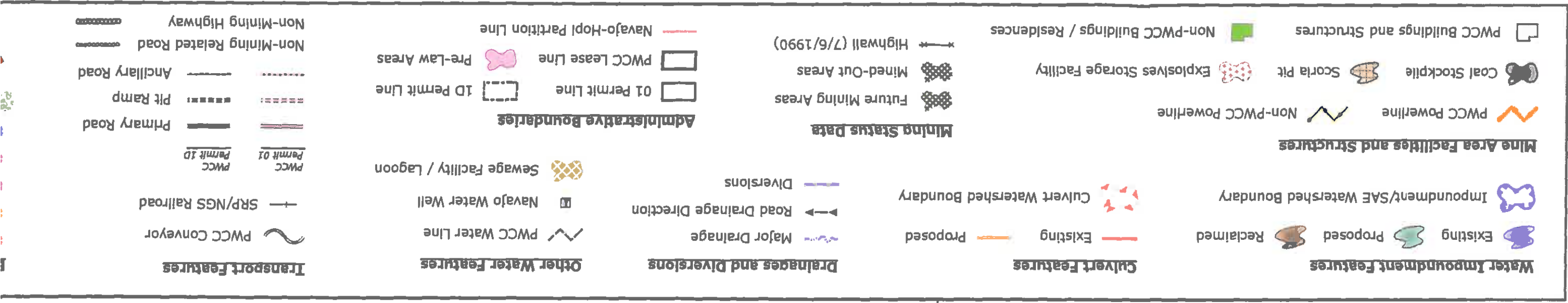
MAP REVISIONS

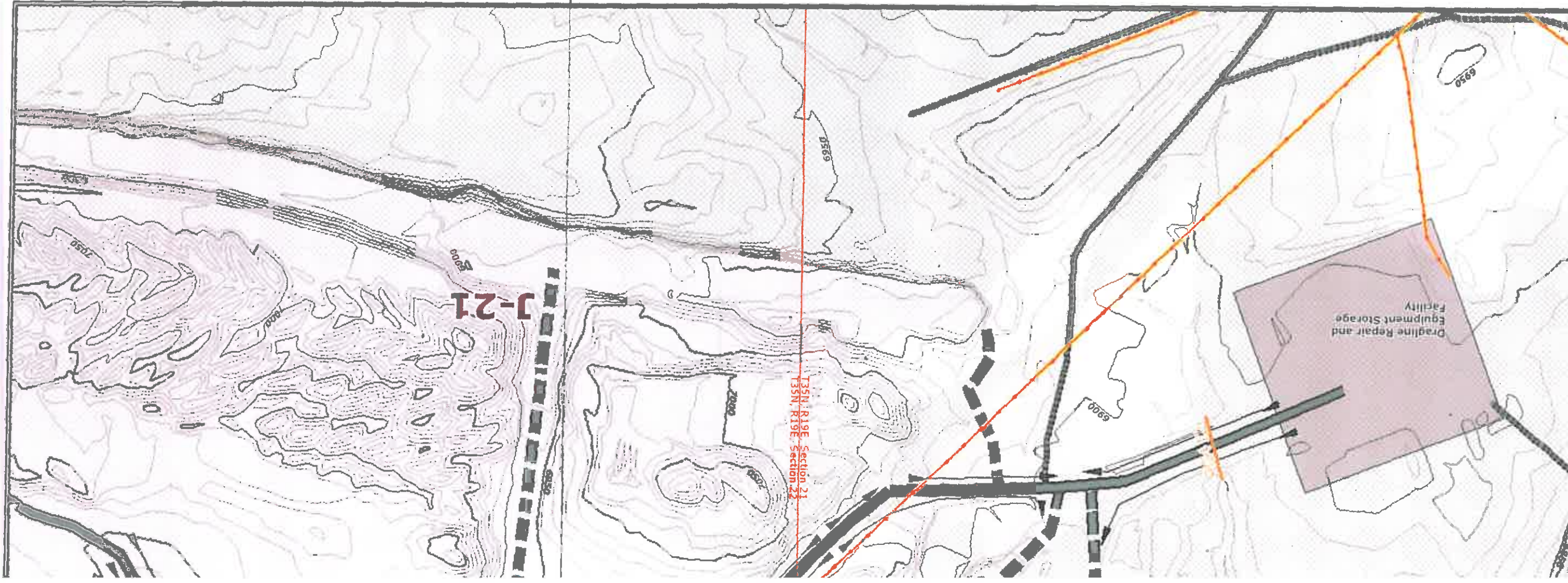
- 85400 NOTES:**
1. SEE DRAWING NO. 85360 FOR THE MINING AFFECTED LANDS.
 2. SEE DRAWING NO. 85405 FOR THE GENERAL LOCATION OF THESE STRUCTURES.
 3. SEE DRAWING NO. 85460-85490 FOR THE MINE SUPPORT FACILITIES MAP.
 4. SEE DRAWING NO. 93500 FOR THE LOCATION OF THE ENVIRONMENTAL MONITORING SITES.
 5. SEE CHAPTERS 6-7 AND 20-26 FOR INFORMATION ON THE FACILITIES AND RECLAMATION PLAN.
- DRAINAGE DIRECTION ON FILL EMBANKMENTS ONLY APPLY WHEN MSHA SAFETY BERM EXISTS.**
- *PRIMARY ROADS HAVE BEEN CONSTRUCTED OR RECONSTRUCTED AS DESIGNED AND IN ACCORDANCE WITH THE APPROVED PLAN.***

50,000

**PWCC
400-Scale
Sheet Index**







Drainage Area and Facilities Map

Drawing #85400

Sheet M10

Produced by PWCC GIS
Jun 24, 2009

APPROVED
JUN 24 2009

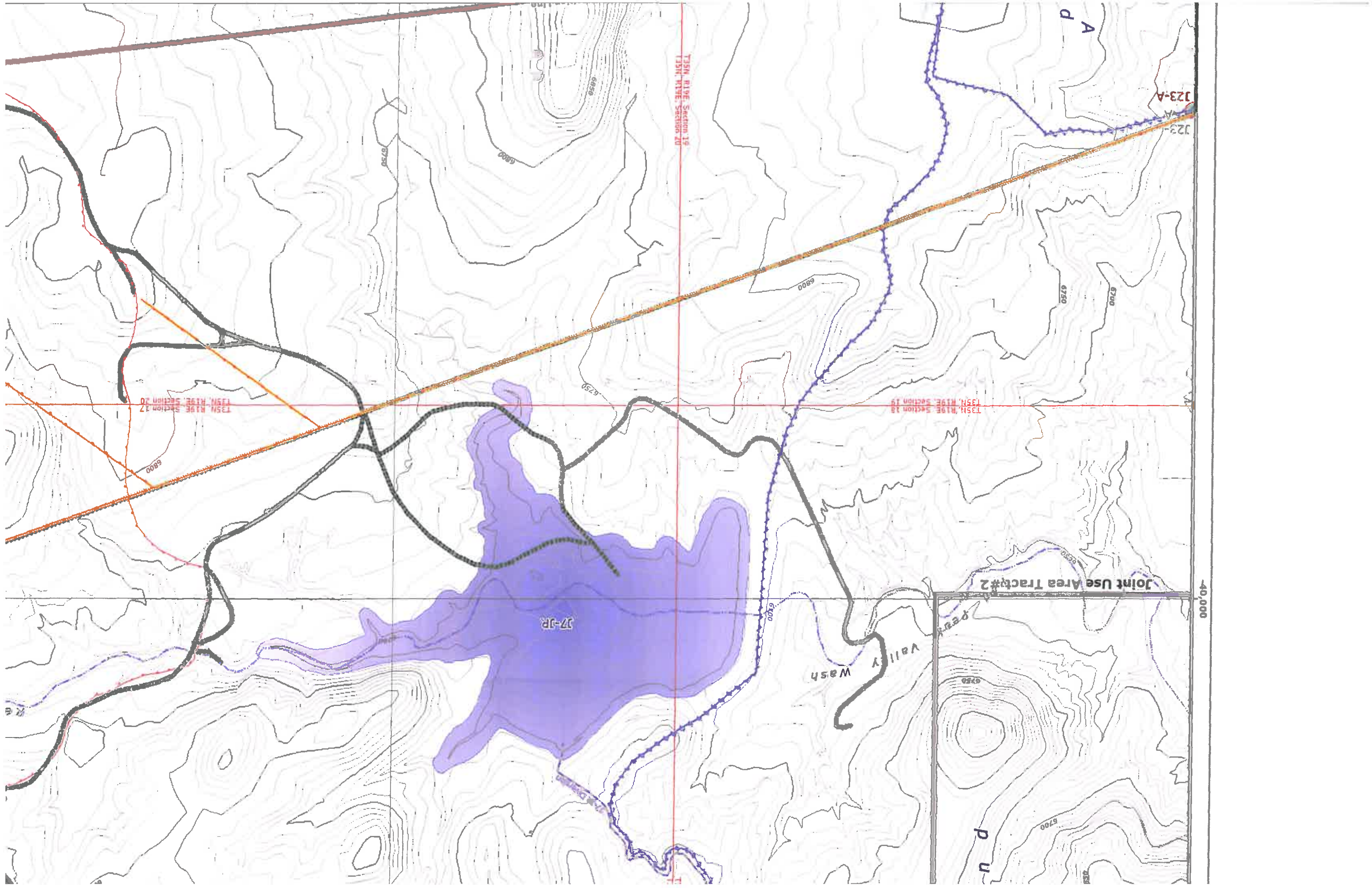
1 Inch = 400 Feet
10 foot Interval
Indexes at 50 feet

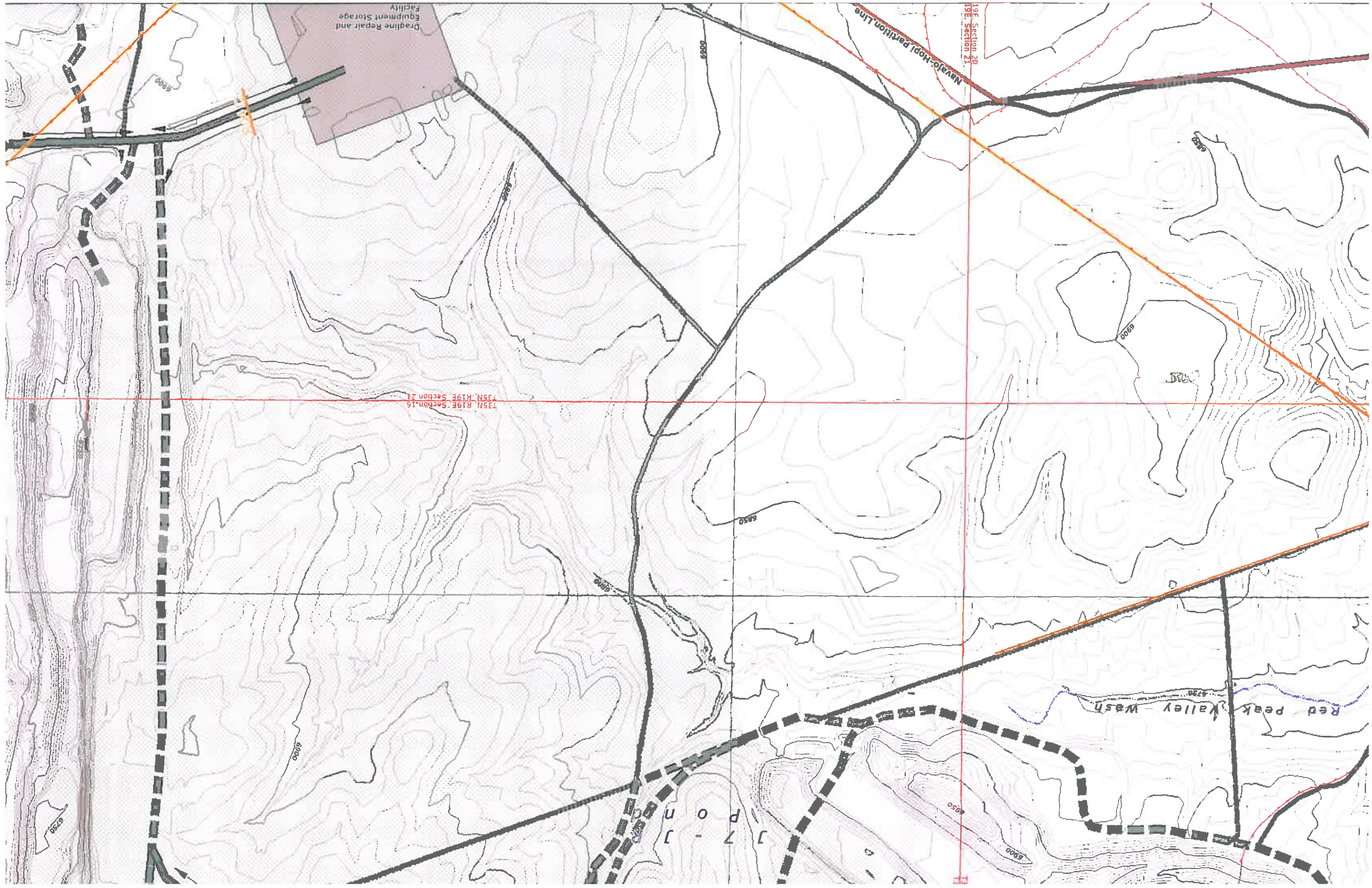
0 100 200 400 Feet

Black Mesa Complex
PO Box 650
Kayenta, Arizona 86033

| | | | | | | |
|--------------------|-------------------------|----------------|--------------------|----------------|--------------------------|----------------------------|
| BICA Features | PWCC Conveyor | PWCC Permit 01 | PWCC Permit 1D | 1D Permit Line | WCC Lease Line | Navajo-Hopi Partition Line |
| Riprap Rock | SRP/NGS Railroad | Primary Road | Ancillary Road | Pre-Law Areas | Sewage Facility / Lagoon | Navajo Water Well |
| Rock Checkdam | Non-Mining Related Road | Pit Ramp | Non-Mining Highway | 1D Permit Line | PWCC Water Line | PWCC Water Line |
| Silt Fence | Primary Road | Primary Road | Primary Road | 1D Permit Line | PWCC Water Line | PWCC Water Line |
| Straw Bales | Primary Road | Primary Road | Primary Road | 1D Permit Line | PWCC Water Line | PWCC Water Line |
| Berm/Sump | Primary Road | Primary Road | Primary Road | 1D Permit Line | PWCC Water Line | PWCC Water Line |
| Revegetated Areas | Primary Road | Primary Road | Primary Road | 1D Permit Line | PWCC Water Line | PWCC Water Line |
| SPCC Point Feature | Primary Road | Primary Road | Primary Road | 1D Permit Line | PWCC Water Line | PWCC Water Line |

60,000





Dragline Repair and
Equipment Storage
Facility

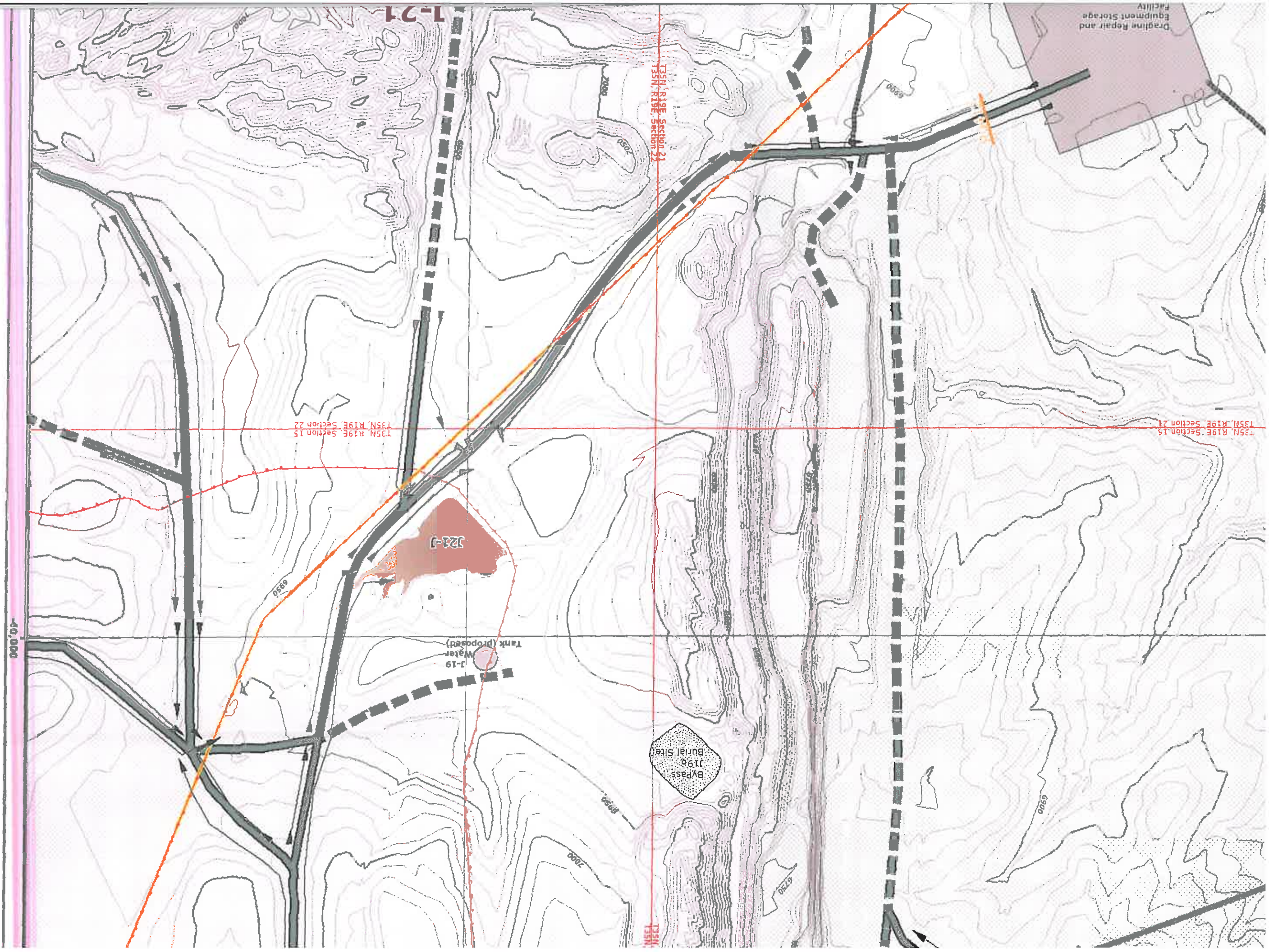
Navajo-Hopi Partition Line

19E Section 20
19E Section 21

135N, R19E, Section 19
135N, R19E, Section 21

Red Peak Valley - Wash

J 7 - J
J P O - J



Dragline Repair and
Equipment Storage
Facility

T35N, R19E, Section 15

T35N, R19E, Section 21
T35N, R19E, Section 22

T35N, R19E, Section 15
T35N, R19E, Section 22

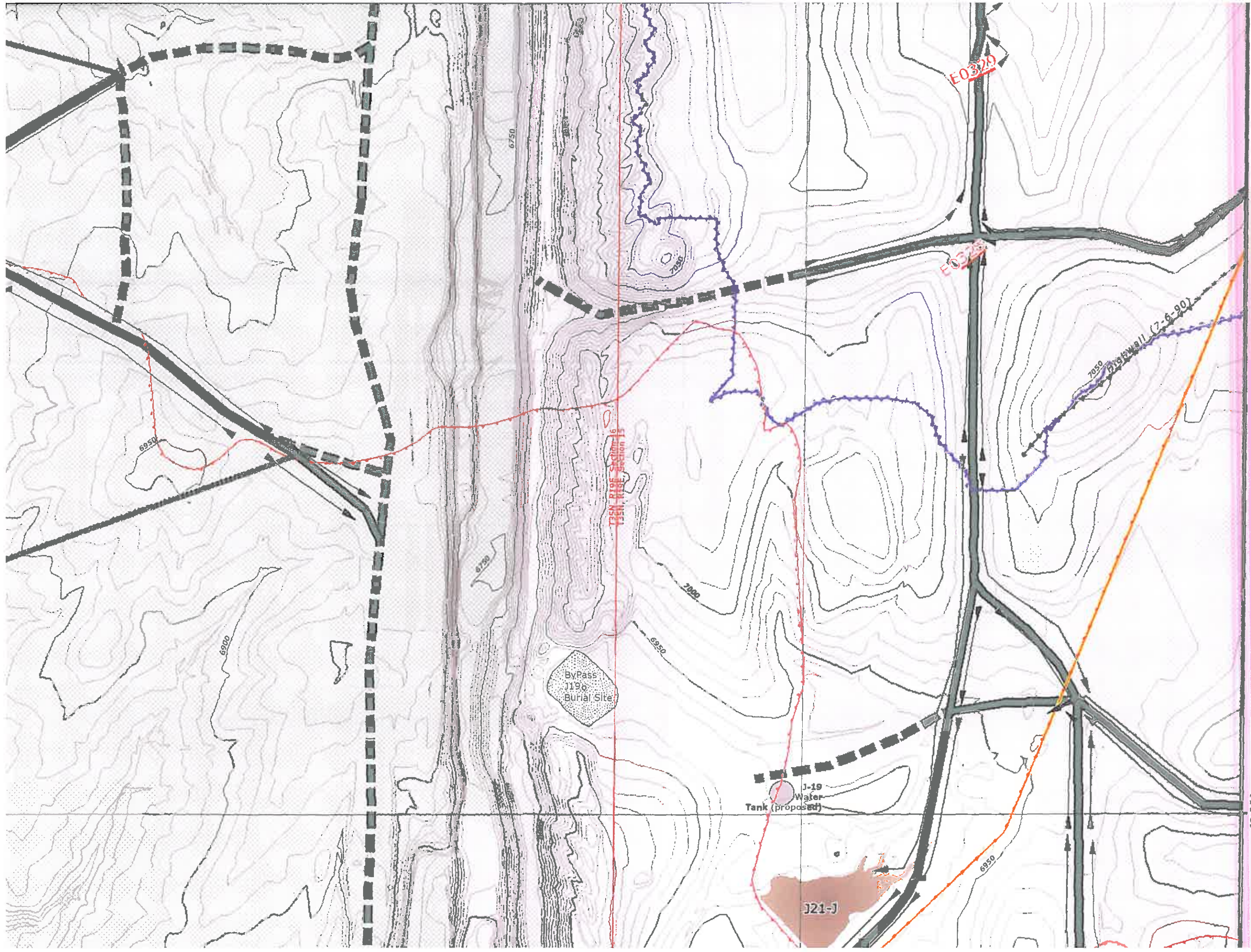
J21-1

J-19
Water
Tank (Proposed)

Bypass
Burial Site
J190

40,000

1-21



E0329

E0328

T35N, R10E, Section 16

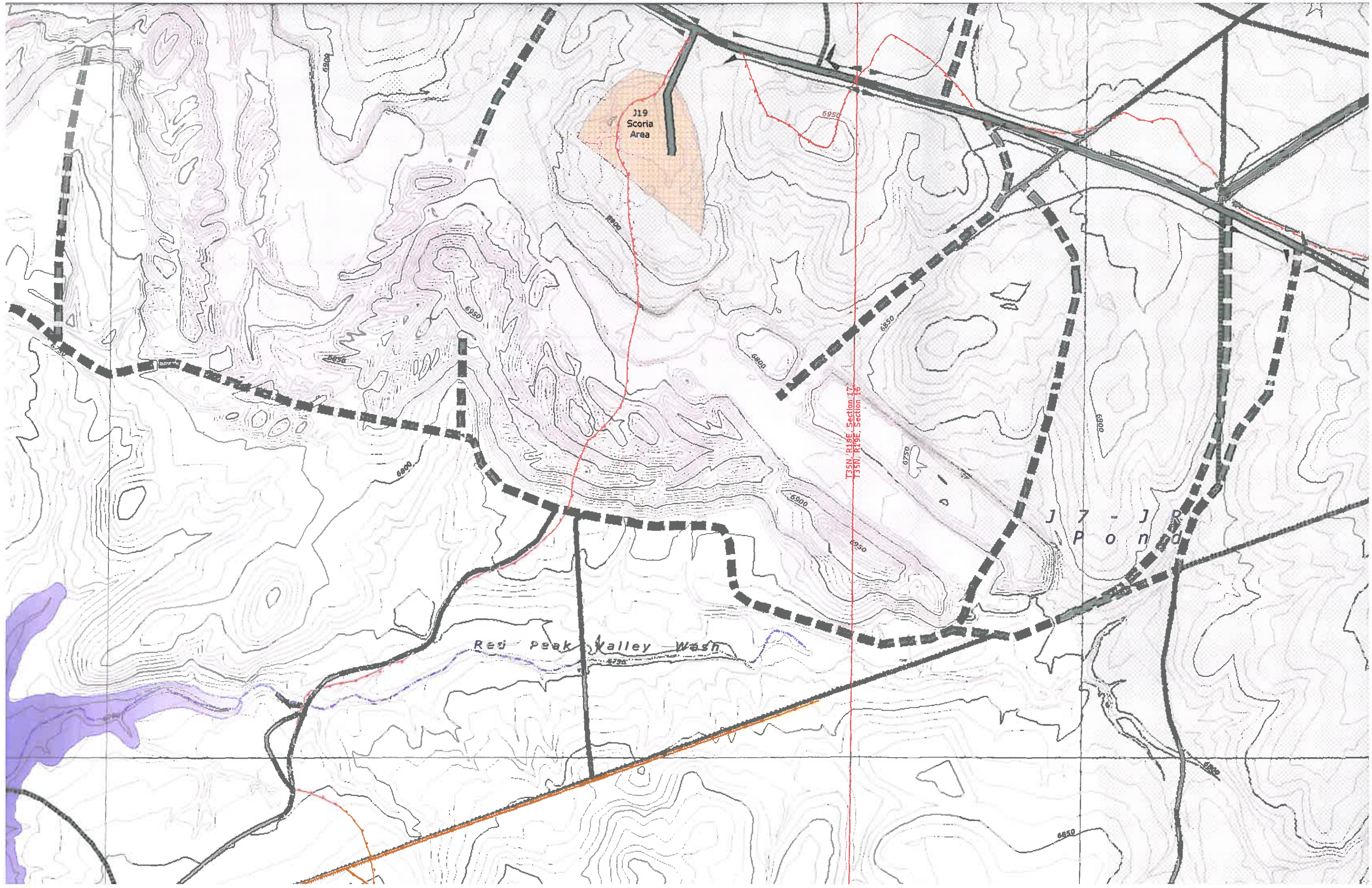
Bypass #11 (7-6-90)

ByPass
J19e
Burial Site

J-19
Water
Tank (proposed)

J21-J

40,000



J19
Scoria
Area

T35N, R19E, Section 17
T35N, R19E, Section 16

Res Peak Valley Wash

J 7 P o n R d

-40,000

Joint Use Area Tract #2

J7-DAM POND

Valley Wash

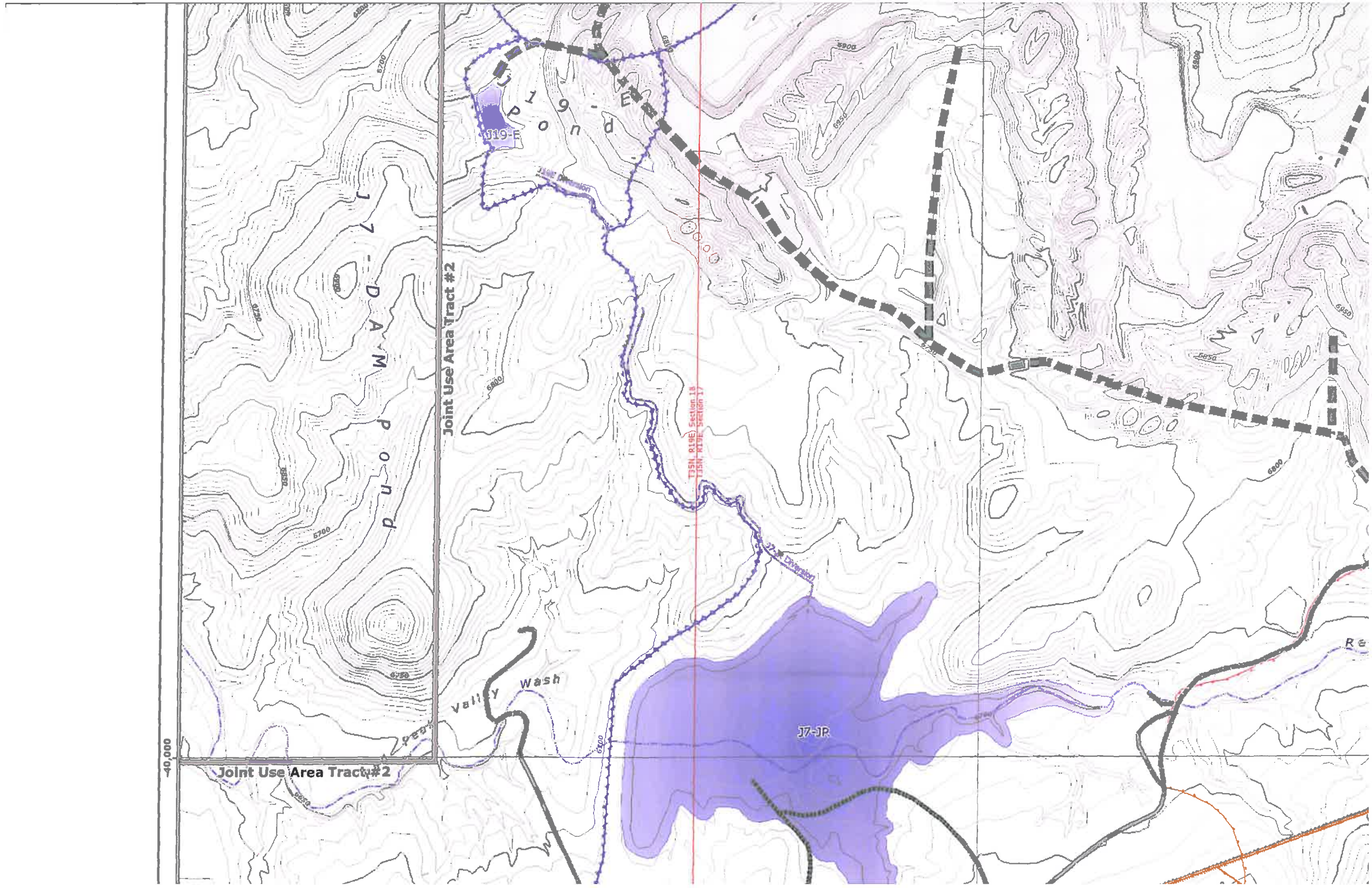
Joint Use Area Tract #2

019-E

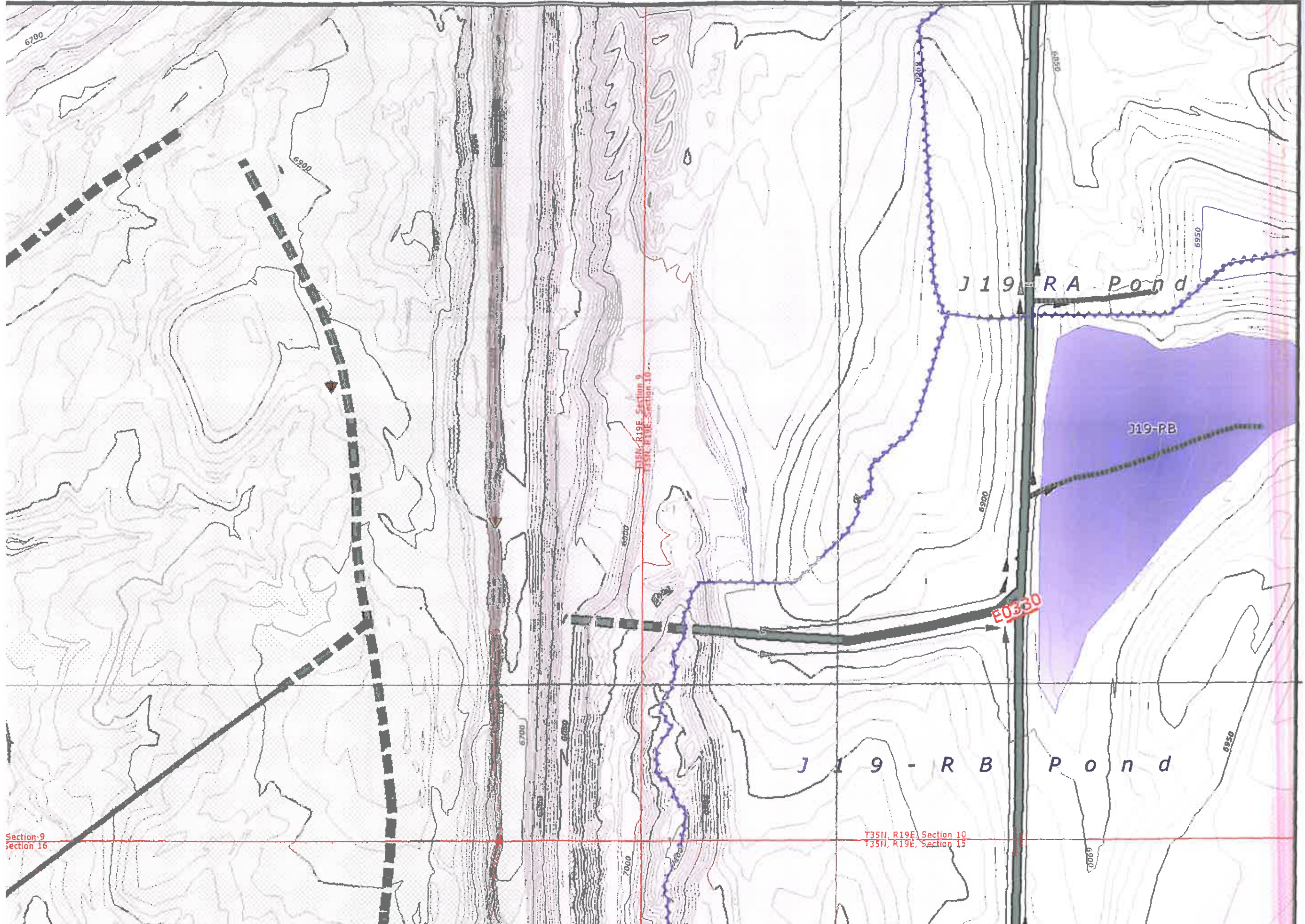
Upland

J7-JP

T15N, R19E, Section 18
T15N, R19E, Section 17



60,000



J19-RA Pond

J19-RB

J19-RB Pond

T35K, R19E, Section 9
T35H, R19E, Section 10

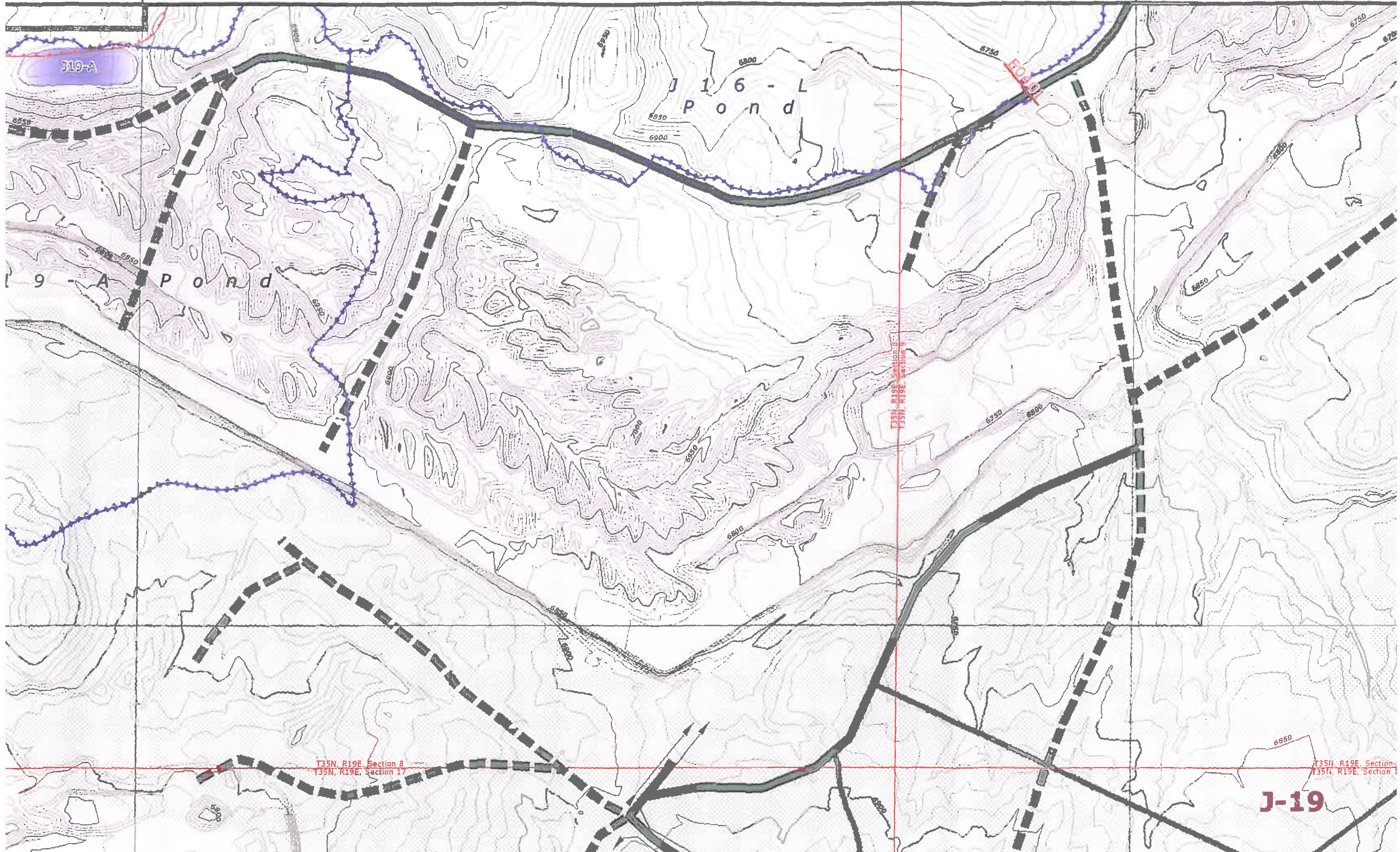
T35H, R19E, Section 10
T35H, R19E, Section 15

Section 9
Section 16

-35,000

50,000

55,000



J19-A

J16-L
Pond

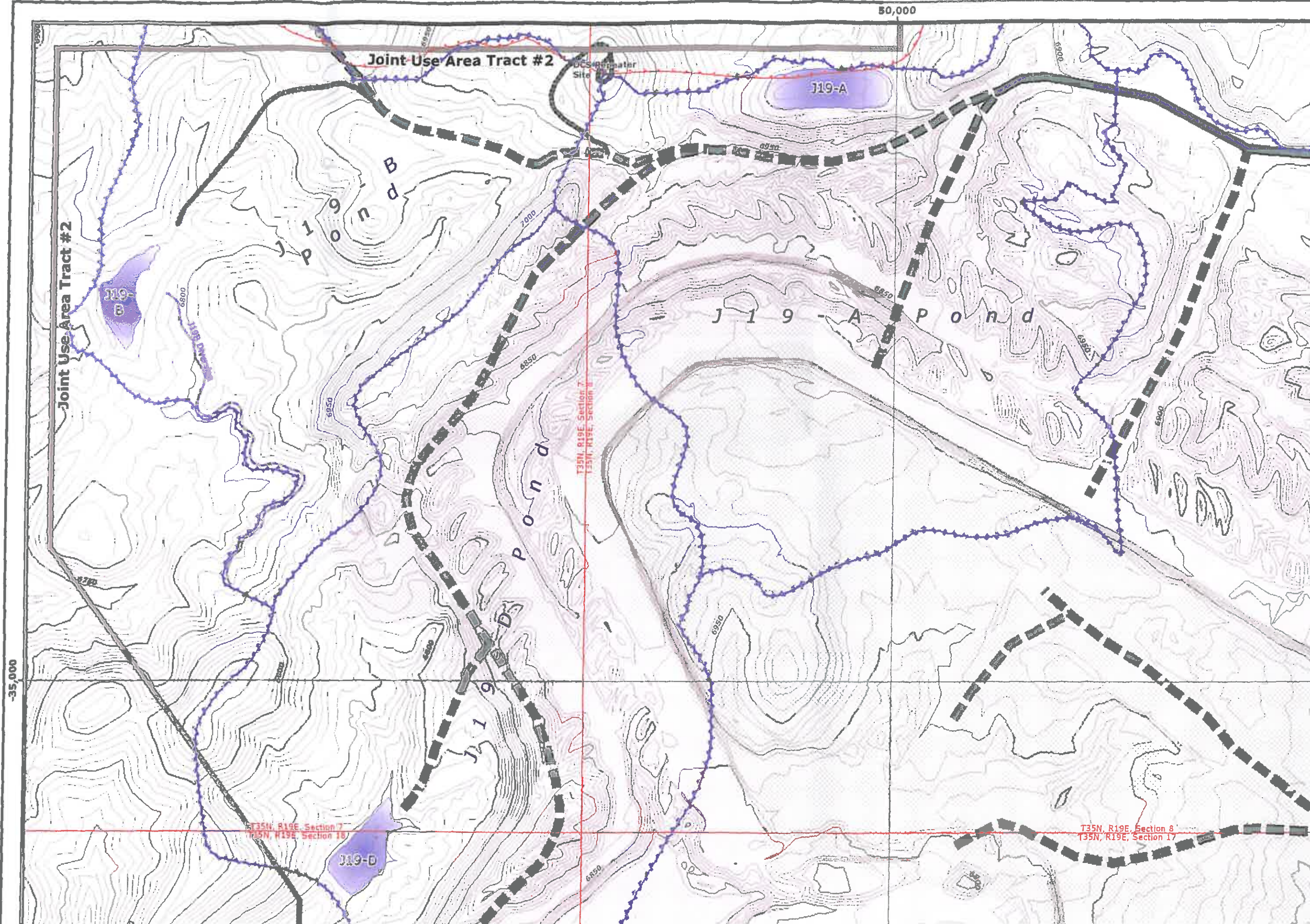
9-A
Pond

T35N, R19E, Section 8
T35N, R19E, Section 17

T35N, R19E, Section 8
T35N, R19E, Section 17

T35N, R19E, Section 8
T35N, R19E, Section 17

J-19



50,000

-35,000

Joint Use Area Tract #2

Joint Use Area Tract #2

J19-A

J19-B

J19-C

J19-A Pond

J19-D Pond

T35N, R19E, Section 7
T35N, R19E, Section 8

T35N, R19E, Section 8
T35N, R19E, Section 17

J19-D

Water Site