

40,000

Culvert Features

- Existing
- Proposed
- Culvert Watershed Boundary

Mining Status Data

- Future Mining Areas
- Mined-Out Areas
- Highwall (7/6/1990)
- Storage Facility
- Buildings / Residences

Drainages and Diversions

- Major Drainage
- Road Drainage Direction
- Diversions

Administrative Boundaries

- 01 Permit Line
- PWCC Lease Line
- Navajo-Hopi Partition Line
- 1D Permit Line
- Pre-Law Areas

Other Water Features

- PWCC Water Line
- Navajo Water Well
- Sewage Facility / Lagoon

Transport Features

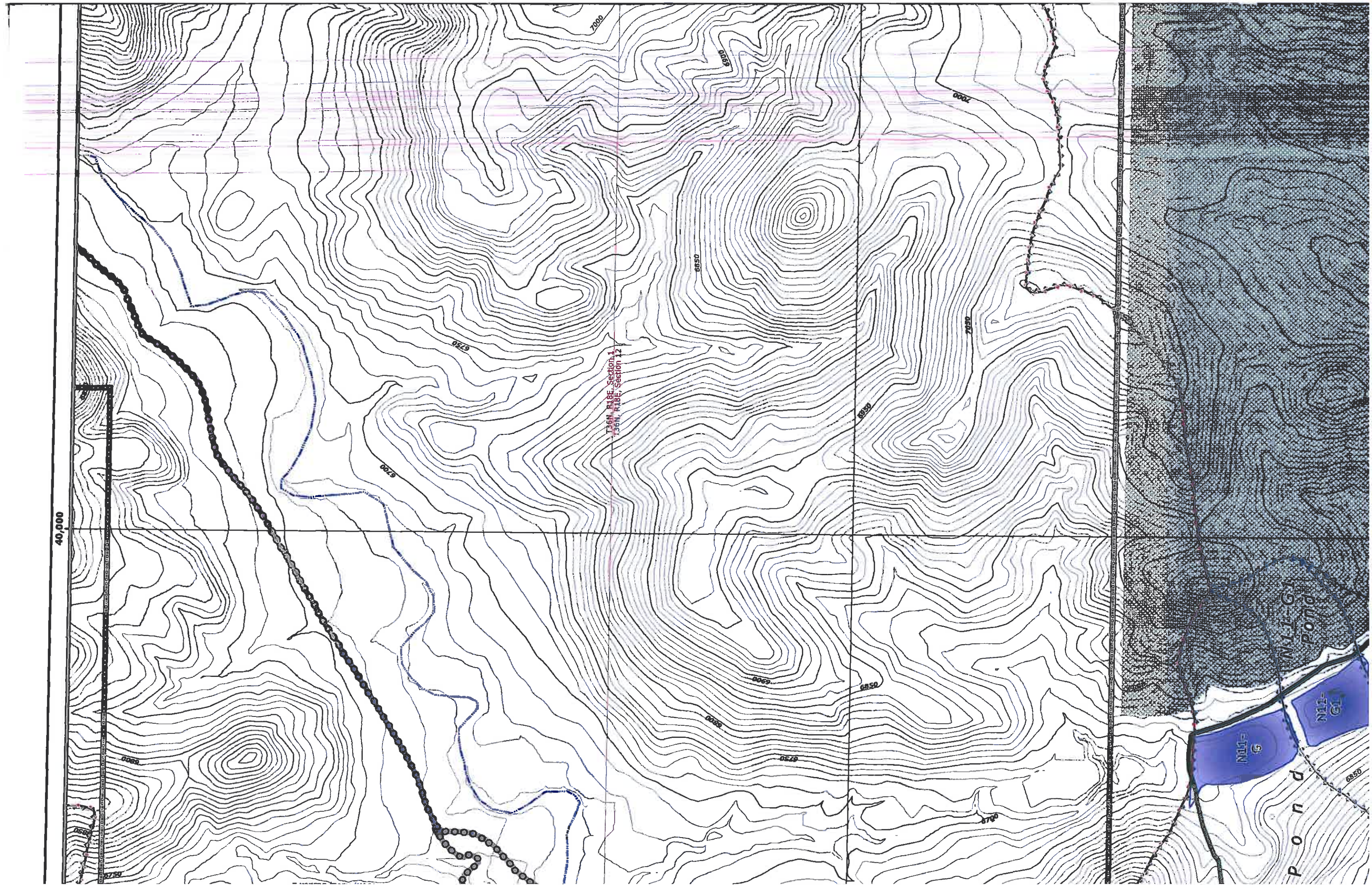
- PWCC Conveyor
- SRP/NGS Railroad
- PWCC Permit 01
- PWCC Permit 1D
- Primary Road
- Pit Ramp
- Ancillary Road
- Non-Mining Related Road
- Non-Mining Highway

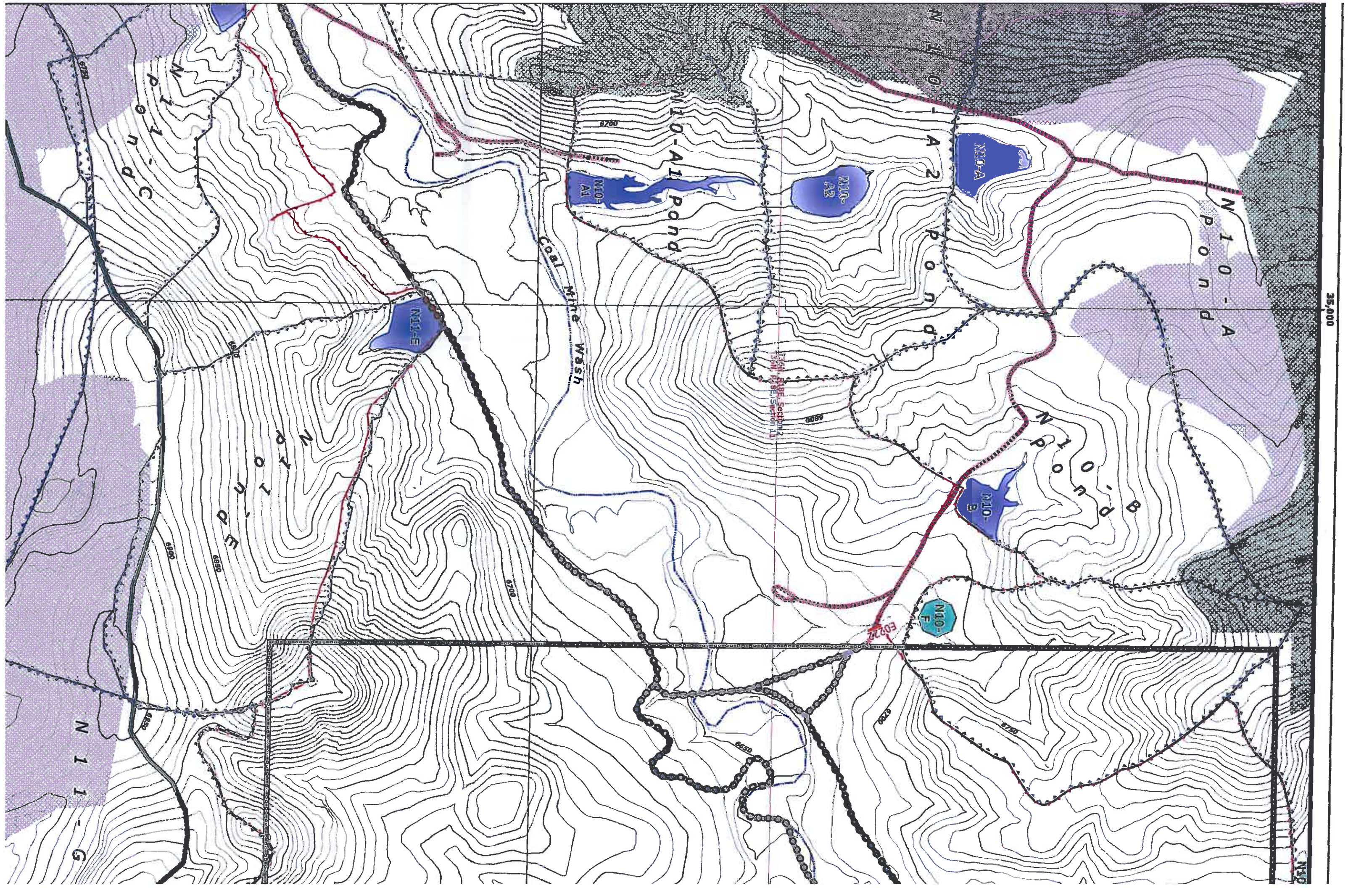
40,000

7000

T36N, R18E, Section 11
T36N, R18E, Section 12

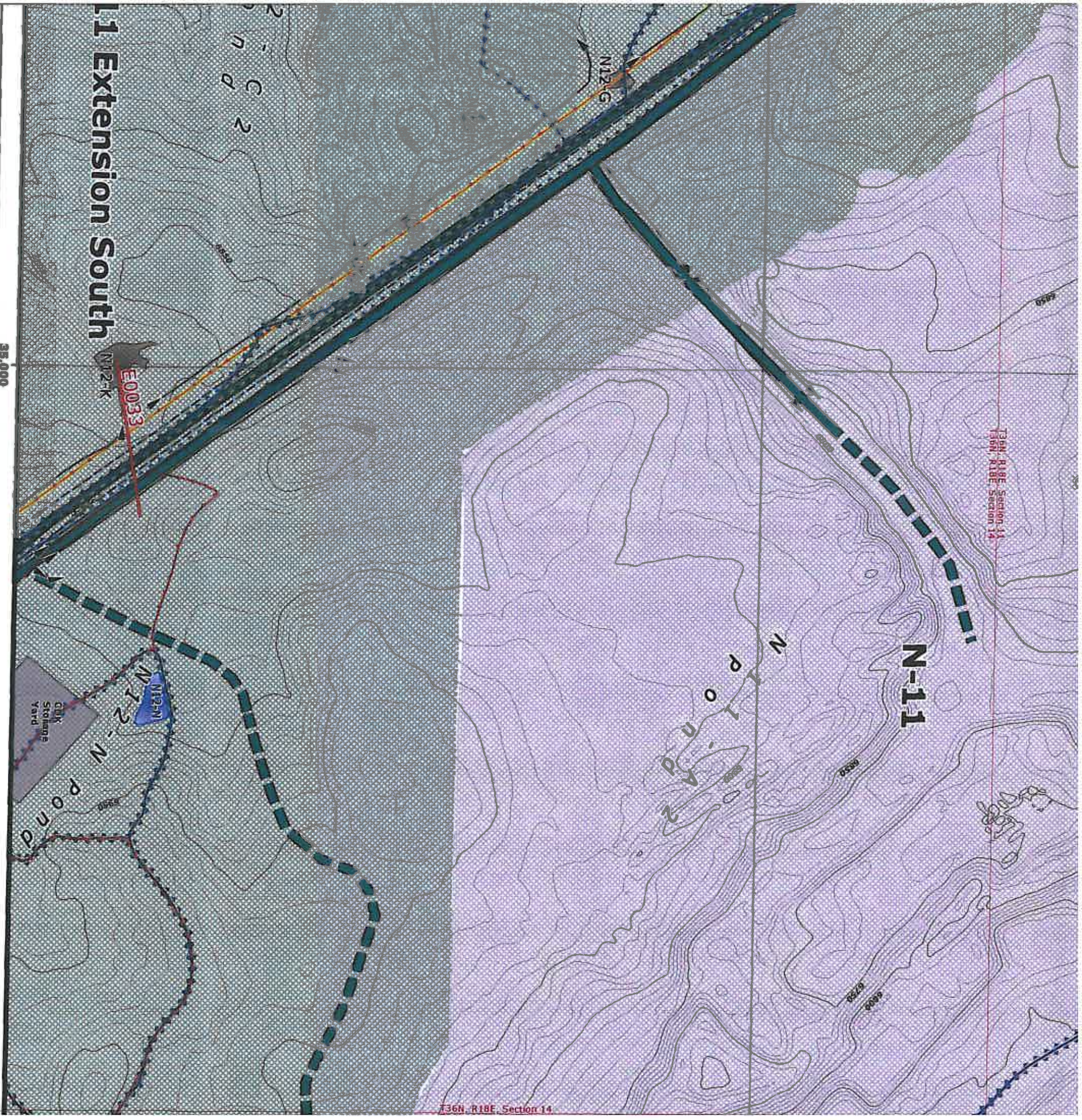
N11-G1
Pond
N11-G1
Pond
N11-G1
Pond





35,000

N10



0 FOR THE MINING AFFECTED LANDS.
 5 FOR THE GENERAL LOCATION
 0-05490 FOR THE MINE SUPPORT FACILITIES MAP.
 0 FOR THE LOCATION OF THE ENVIRONMENTAL
 20-26 FOR INFORMATION ON THE FACILITIES

FILL EMBANKMENTS ONLY APPLY WHEN
 EN CONSTRUCTED OR RECONSTRUCTED
 ORDINANCE WITH THE APPROVED PLAN.*

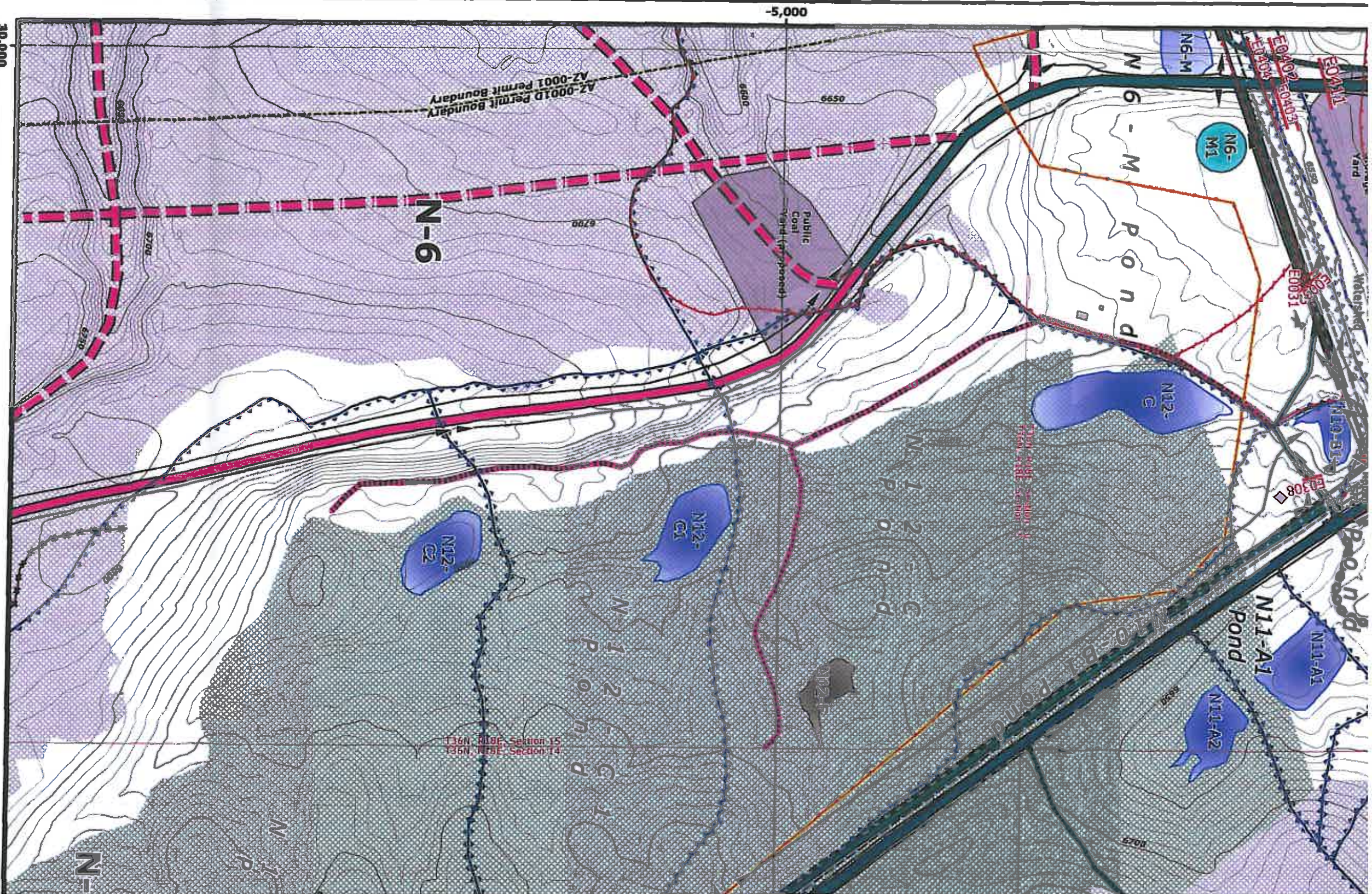


Water Impoundment Features

- Existing
- Proposed
- Reclaimed
- Impoundment/SAE Watershed Boundary

Mine Area Facilities and Structures

- PWCC Powerline
- Non-PWCC Powerline
- Coal Stockpile
- Scorfa Pit
- Explosives
- PWCC Buildings and Structures
- Non-PWCC



ENGINEER'S CERTIFICATION

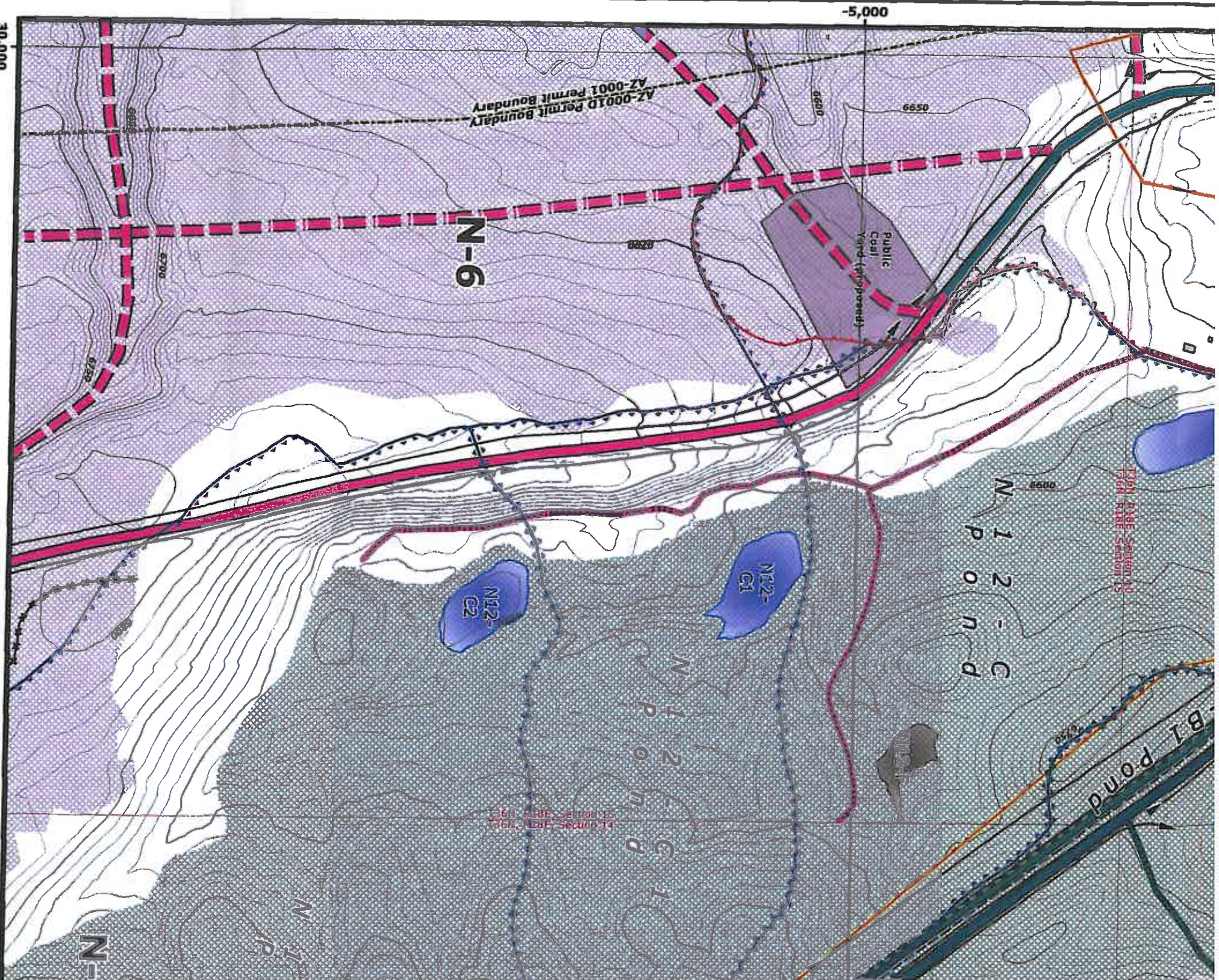
Registered Professional Engineer (Civil)
 18782
JAMES GARY SCHLIEWEGT
 Engineer, Mechanical
 Peabody West, ARIZONA, U.S.A.
 Date **JAN 04 2008**

MAP REVISIONS

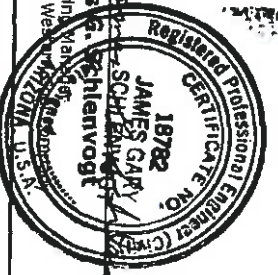
CHK'D	DATE	DESCRIPTION
JGS	Aug 15, 2004	OSM Response
JGS	Jan 14, 2005	N09 5 Year Milespan Rev
JGS	Jun 15, 2005	N09 Facilities Revision
JGS	Sep 30, 2005	N09 & N06 Facilities Revision
JGS	Dec 15, 2005	N09 Sequence Revision
JGS	Jan 20, 2006	OSM Response
JGS	Feb 4, 2006	N06 Road As-Built Response
JGS	Feb 24, 2006	N09 Facilities Revision
GW	Apr 12, 2006	TCPs and Roads Revision
JGS	May 9, 2006	N09 Road As-Built
JGS	Jul 12, 2006	Airport Rd / W196 Written Revision
JGS	Aug 30, 2006	Road Alignment Revision
JGS	Nov 6, 2007	software upgrade / re-visit feature updates

85400 NOTES:

1. SEE DRAWING NO. 85
 2. SEE DRAWING NO. 85 OF THESE STRUCTURE
 3. SEE DRAWING NO. 85 MONITORING SITES.
 4. SEE CHAPTERS 6-7 AND RECLAMATION PL
 5. SEE CHAPTERS 6-7 AND RECLAMATION PL
- "DRAINAGE DIRECTION (MSHA SAFETY BEAM EXI
 "PRIMARY ROADS HAVE 1 AS DESIGNED AND IN AC



ENGINEER'S CERTIFICATION



 James G. Schlenker

 Registered Professional Engineer (Civil)

 State of Arizona, U.S.A.

 Date **JAN 04 2008**

MAP REVISIONS

CHG'D	DATE	DESCRIPTION
JCS	Aug 15, 2004	OSM Response
JCS	Jan 14, 2005	N09 5 Year Mileuphan Rev
JCS	Jun 15, 2005	N09 Facilities Revision
JCS	Aug 30, 2005	N09 R. N06 Facilities Revision
JCS	Dec 15, 2005	N09 Sanquon Revision
JCS	Jan 20, 2006	OSM Response
JCS	Feb 4, 2006	N08 Road As-Built Response
JCS	Feb 24, 2006	N09 Facilities Revision
GW	Apr 12, 2006	TC's and Roads Revision
JCS	May 9, 2006	N09 Road As-Built
JCS	Jul 12, 2006	Airport Rd / W/16 W/ventilation Revision
JCS	Aug 30, 2006	Road Alignment Revision
JCS	Nov 5, 2007	Software Upgrade / Mile-wide feature updates

85400 NOTES:

1. SEE DRAWING NO. 85
 2. SEE DRAWING NO. 85 OF THESE STRUCTURE
 3. SEE DRAWING NO. 85
 4. SEE DRAWING NO. 93 MONITORING SITES.
 5. SEE CHAPTERS 6-7 AN AND RECLAMATION PL
- *DRAINAGE DIRECTION (MSHA SAFETY BENCH EXT)

 *PRIMARY ROADS HAVE L AND RECLAMATION PL