


ENGINEER'S CERTIFICATION



 Registered Professional Engineer (Civil)

 JAMES G. SCHINDLER

 No. 18782

 State of Arizona

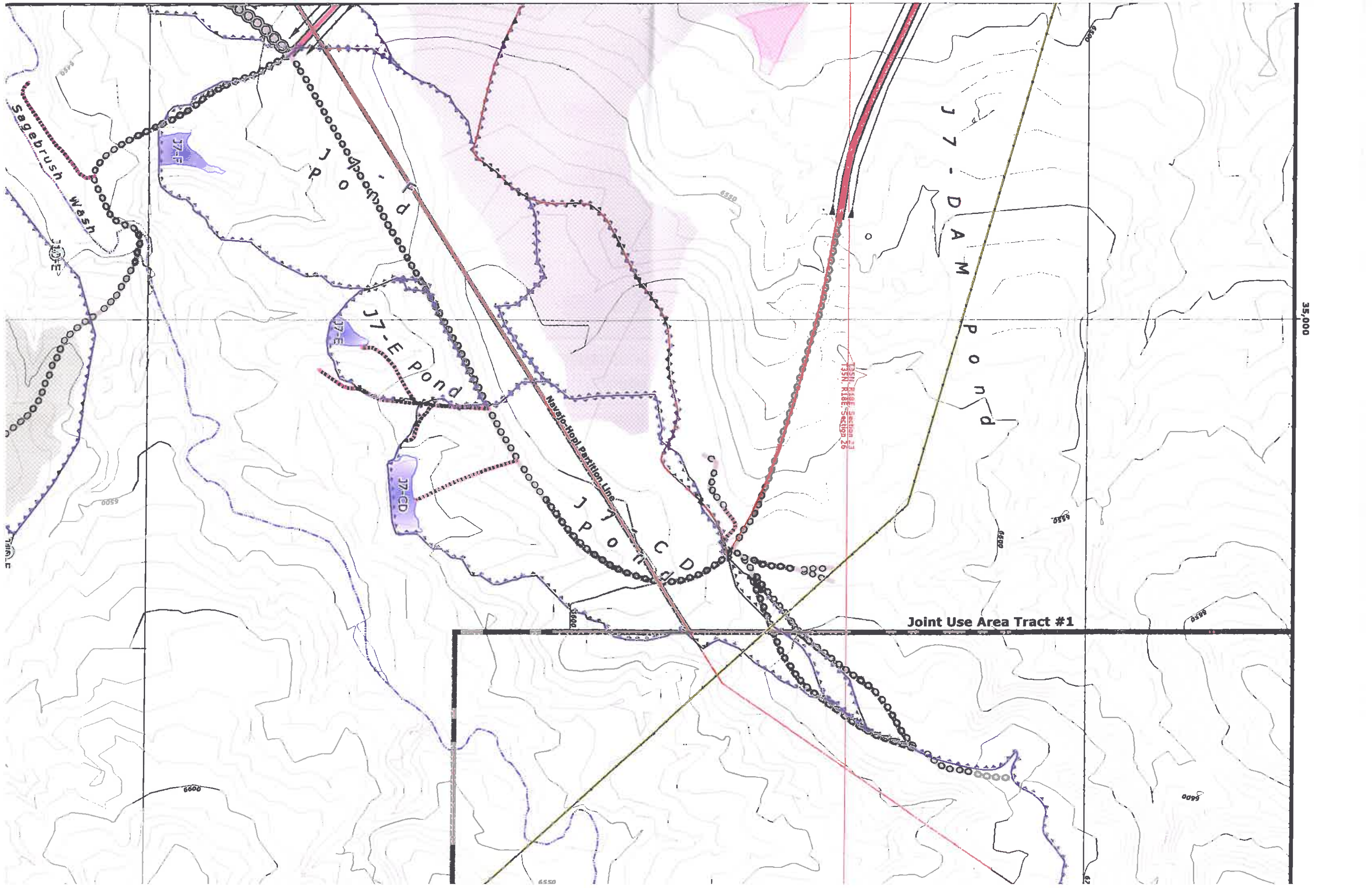
 Date **JAN 04 2008**

MAP REVISIONS

CHK'D	DATE	DESCRIPTION
JGS	Aug 15, 2004	OSM Response
JGS	Jan 14, 2005	NO5 5 Year Mileplan Rev
JGS	Jun 15, 2005	NO5 Facilities Revision
JGS	Sep 30, 2005	NO5 & NO6 Facilities Revision
JGS	Dec 15, 2005	NO5 Sequence Revision
JGS	Jan 20, 2006	OSM Response
JGS	Feb 4, 2006	NO6 Reed Av-Built Response
JGS	Feb 24, 2006	NO9 Facilities Revision
GW	Apr 12, 2006	TCPs and Reader Revision
JGS	May 9, 2006	NO9 Reed Av-Built
JGS	Jun 12, 2006	Airport Rd / W/S Waterline Revision
JGS	Aug 30, 2006	Road Alignment Revision
JGS	Dec 21, 2007	Reference Update / Minor data updates

85400 NOTES:

1. SEE DRAWING
 2. SEE DRAWING OF THESE STR
 3. SEE DRAWING
 4. SEE DRAWING MONITORING
 5. SEE CHAPTERS AND RECLAMA
- DRAINAGE DIRE
 NSHA SAFETY BI
 PRIMARY ROADS
 AS DESIGNED AN



35,000

Joint Use Area Tract #1

J7-DAM Pond

J7-E Pond

J7-CD Pond

J7-F Pond

Sagebrush Wash

Nevada Hoop Partition Line

135N, R18E, Section 26

6600

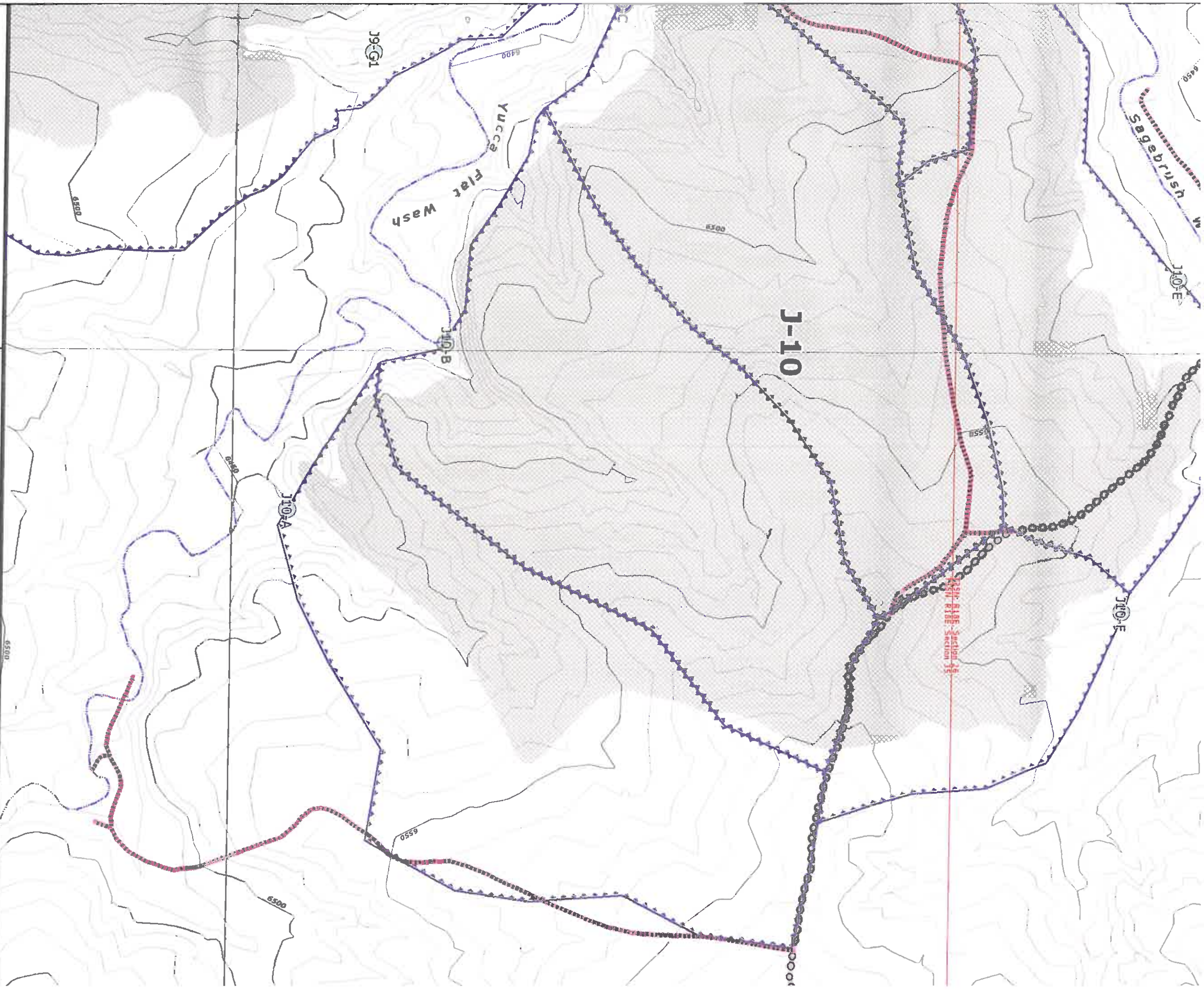
6550

6550

6500

6550

6600



Water Impoundment Features

- Existing
- Proposed
- Reclaimed
- Impoundment/SAE Watershed Boundary

Mine Area Facilities and Structures

- PWCC Powerline
- Non-PWCC Powerline
- Coal Stockpile
- Scoria Pit
- Explosive
- Non-PW
- PWCC Buildings and Structures



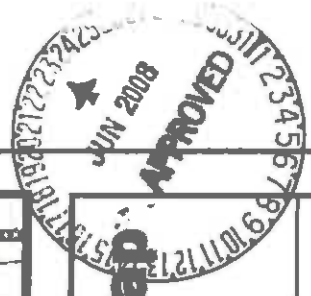
D. 85360 FOR THE MINING AFFECTED LANDS.
 D. 85405 FOR THE GENERAL LOCATION
 FEATURES.
 D. 85460-85490 FOR THE MINE SUPPORT FACILITIES MAP.
 D. 93500 FOR THE LOCATION OF THE ENVIRONMENTAL
 FEES.
 17 AND 20-26 FOR INFORMATION ON THE FACILITIES
 ON PLAN.
 NON ON FILL EMBANKMENTS ONLY APPLY WHEN
 M EXIST.
 HAVE BEEN CONSTRUCTED OR RECONSTRUCTED
 IN ACCORDANCE WITH THE APPROVED PLAN."



Drainage Area and Facilities Map

Drawing #85400

Sheet L11



CA Features

- Riprap Rock
- Rock Checkdam
- Silt Fence
- Straw Bales
- Revegetated Areas
- SPCC Point Feature

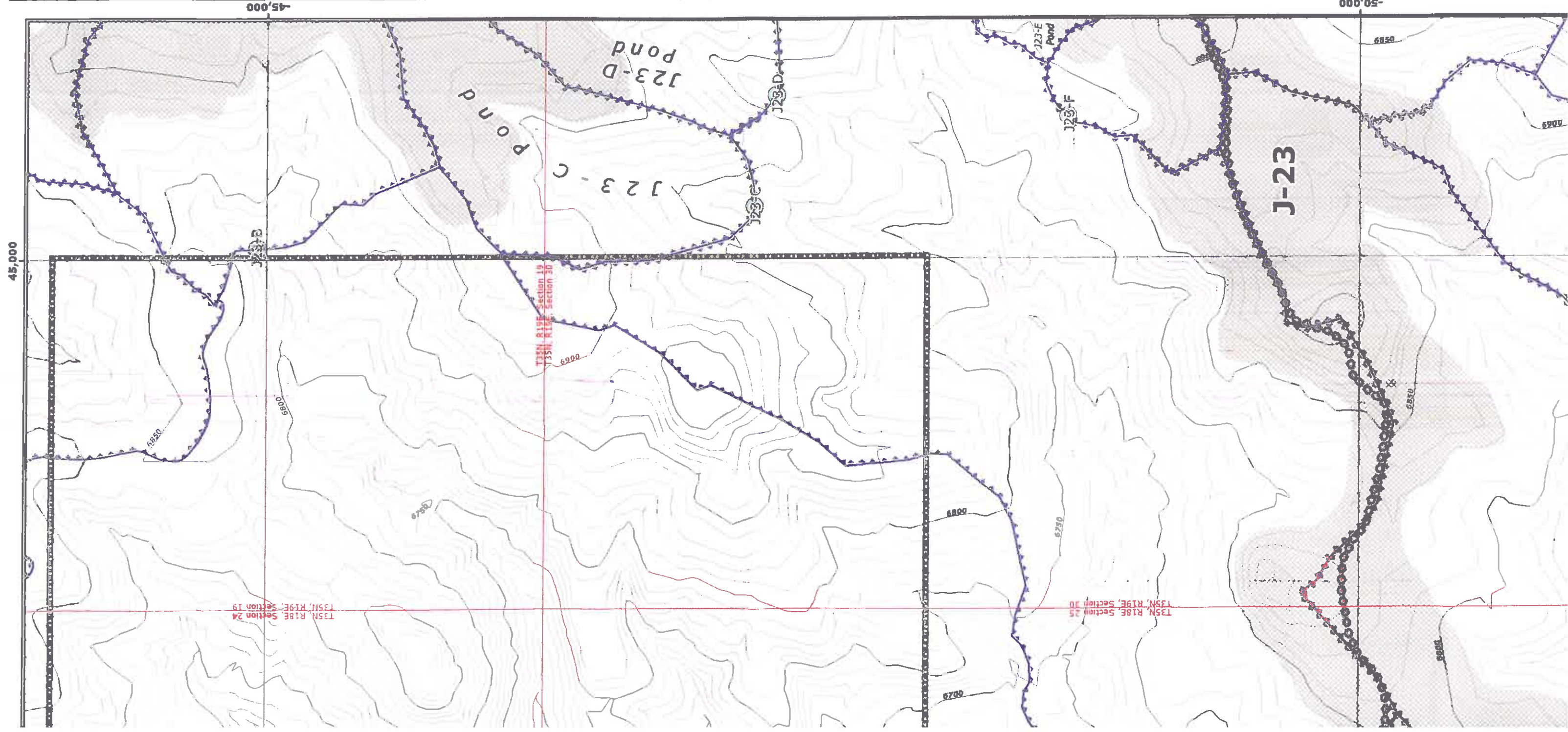
Produced by PWCC GIS

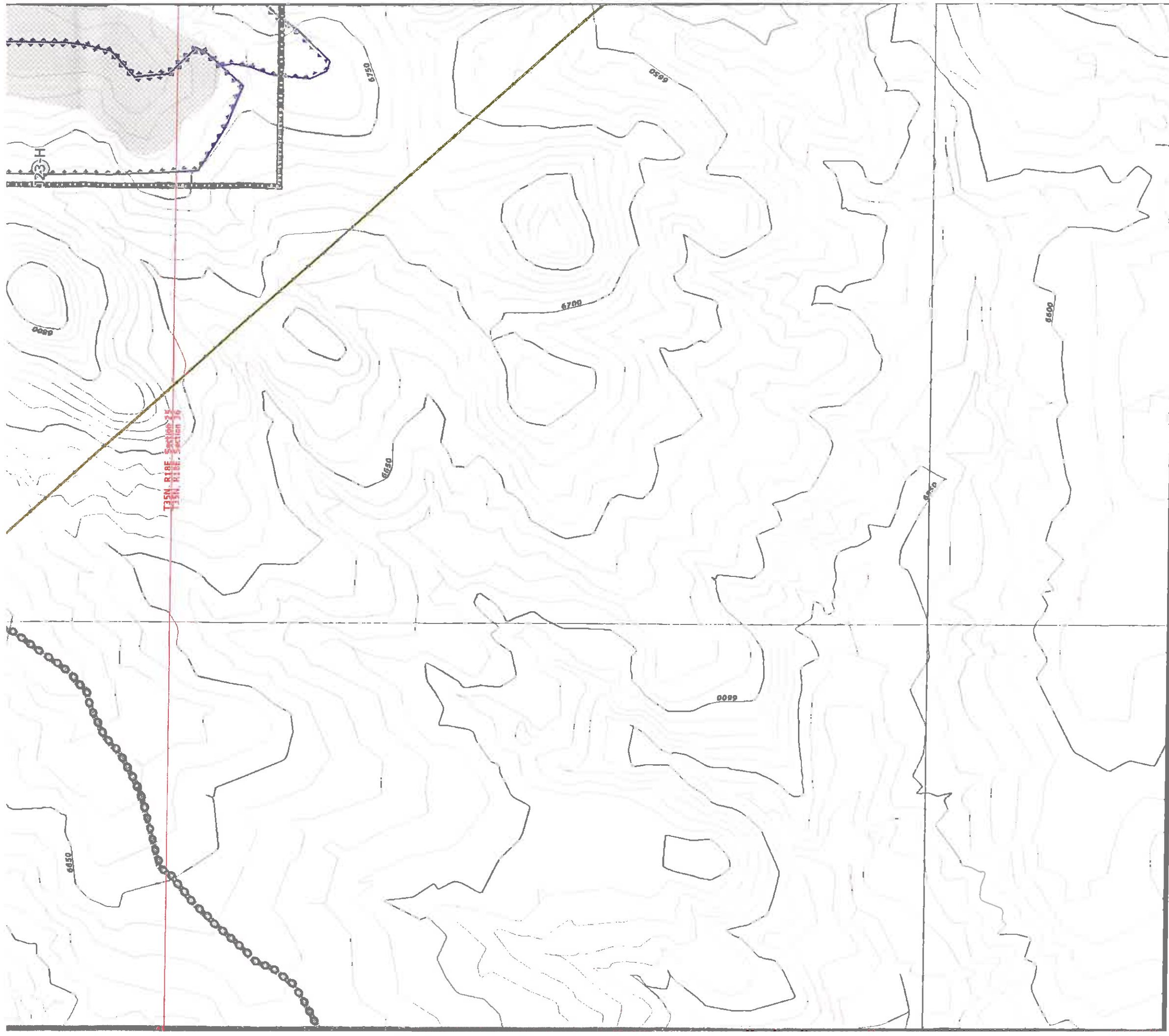
Jan 09, 2008

0 100 200 400 Feet
 1 Inch = 400 Feet
 10 foot Interval
 Indexes at 50 feet



PEABODY WESTERN
 Black Mesa Complex
 PO Box 650
 Kayenta, Arizona 86033





40,000

Culvert Features

- Existing
- Proposed
- Culvert Watershed Boundary

Mining Status Data

- Future Mining Areas
- Mined-Out Areas
- Highwall (7/6/1990)
- Storage Facility
- Buildings / Residences

Drainages and Diversions

- Major Drainage
- Road Drainage Direction
- Diversions

Other Water Features

- PWCC Water Line
- Navajo Water Well
- Sewage Facility / Lagoon

Transport Features

- PWCC Conveyer
- SRP/NGS Railroad
- PWCC Permit 01
- PWCC Permit 10
- Primary Road
- Pit Ramp
- Ancillary Road
- Non-Mining Related Road
- Non-Mining Highway

Administrative Boundaries

- 01 Permit Line
- PWCC Lease Line
- Navajo-Hopi Partition Line
- 1D Permit Line
- Pre-Law Areas

