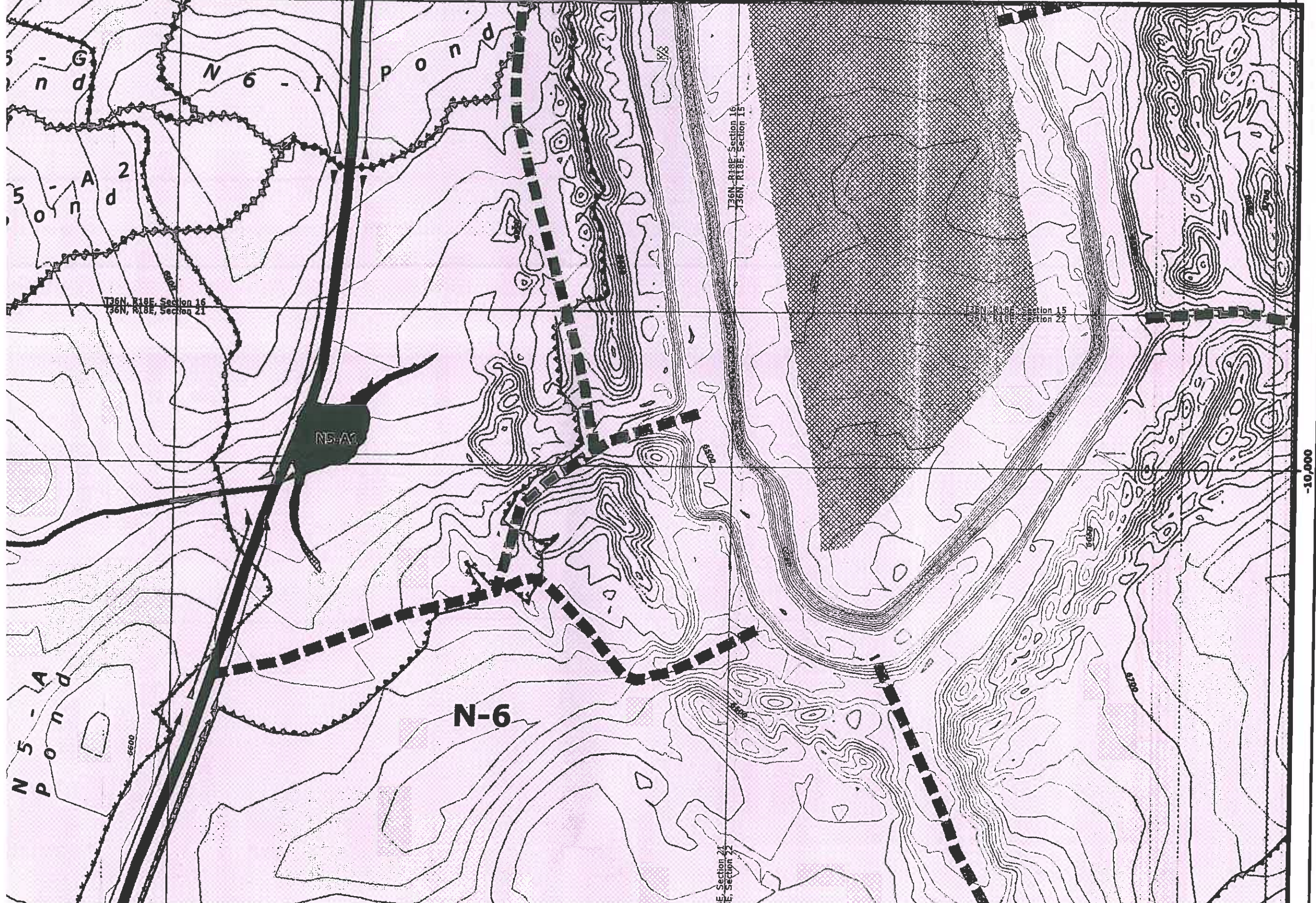
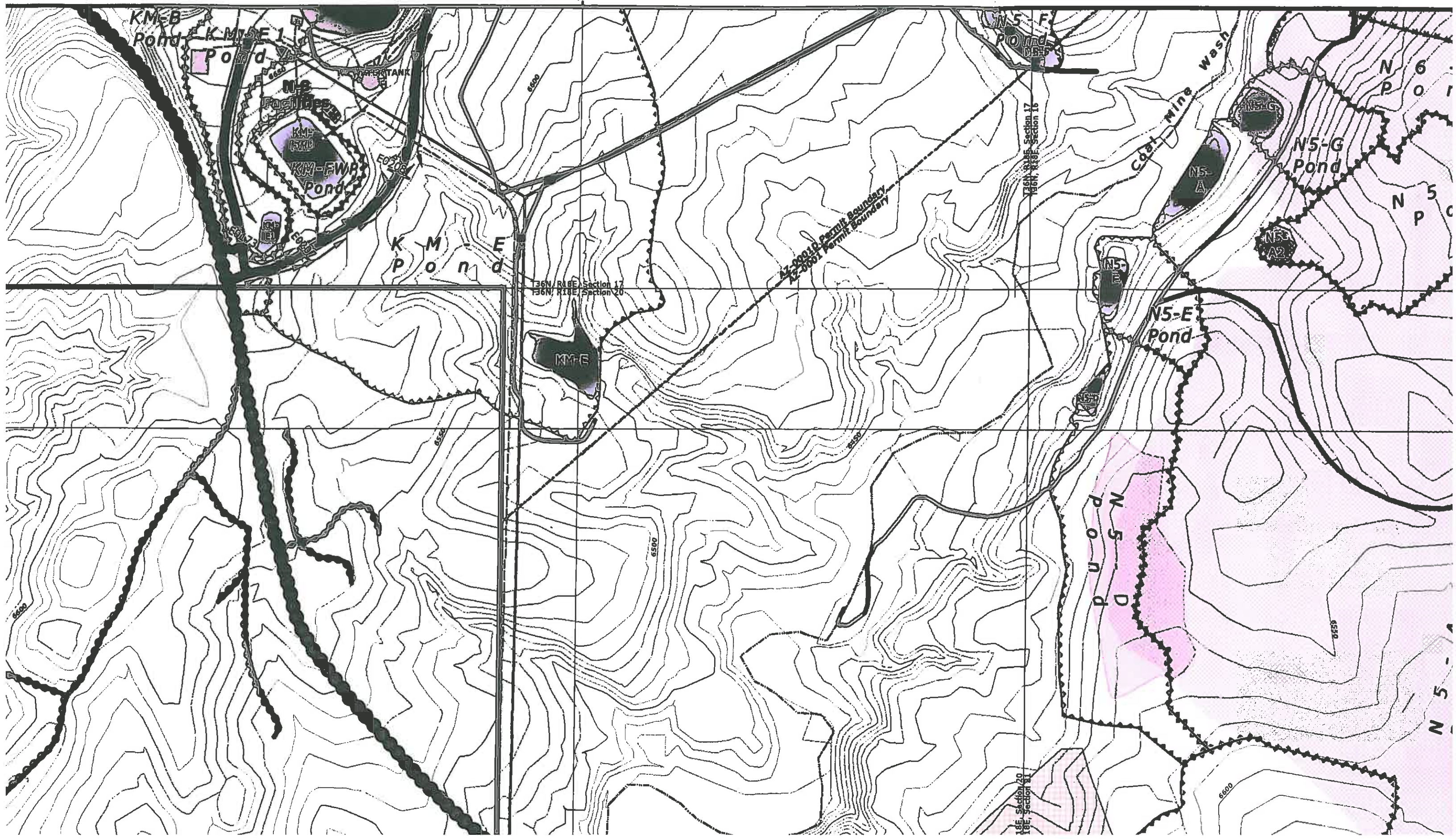


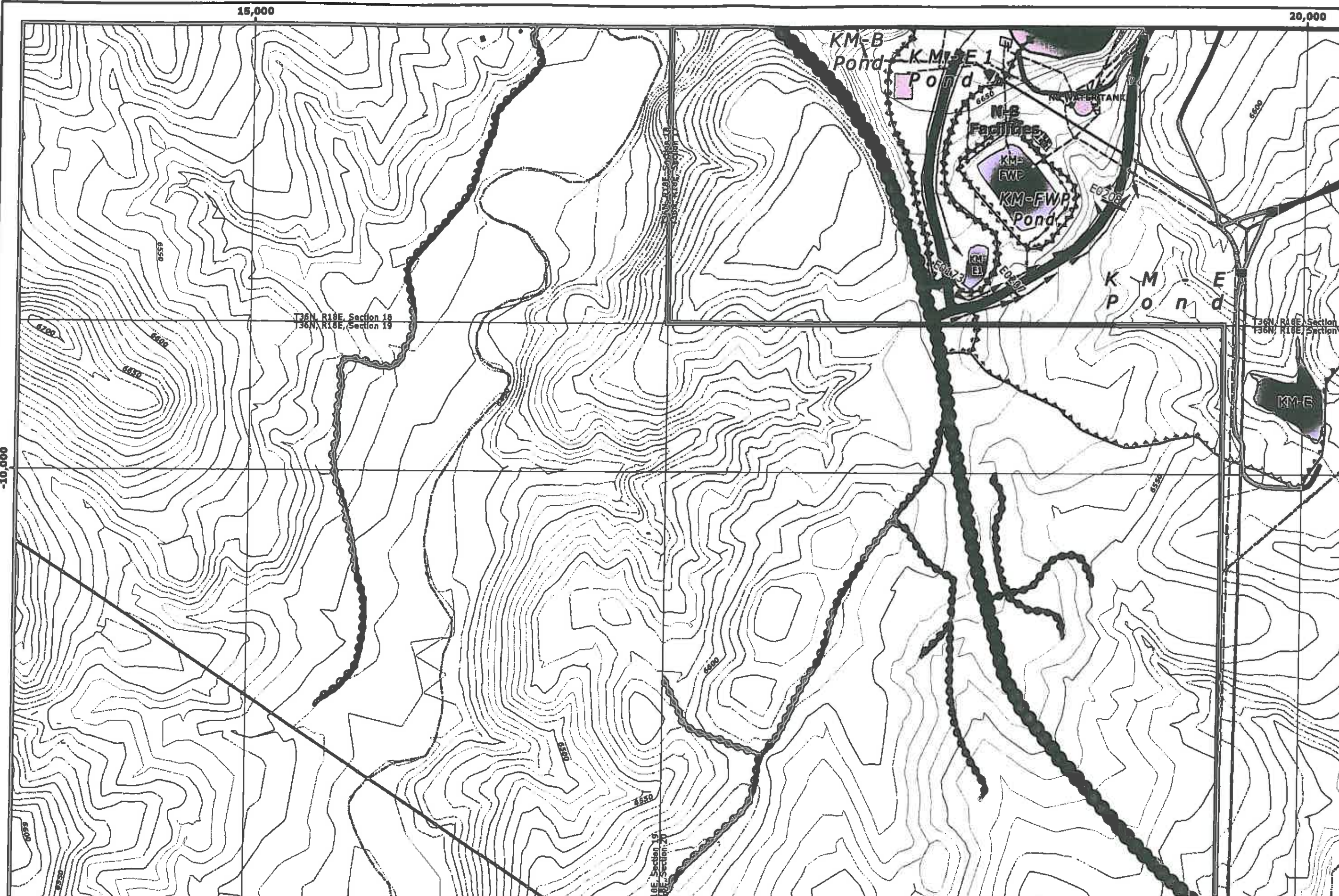
25,000 30,000



-10,000

20,000





15,000

20,000

-10,000

KM-B Pond

KM-E 1 Pond

N-S Facilities

KM-FWP Pond

K M E Pond

KM-E

T36N, R18E, Section 18
T36N, R18E, Section 19

T36N, R18E, Section 18
T36N, R18E, Section 19

T18E, Section 9
T18E, Section 10

6050

6550

6200

6600

6450

6050

6550

6600

6550

6600

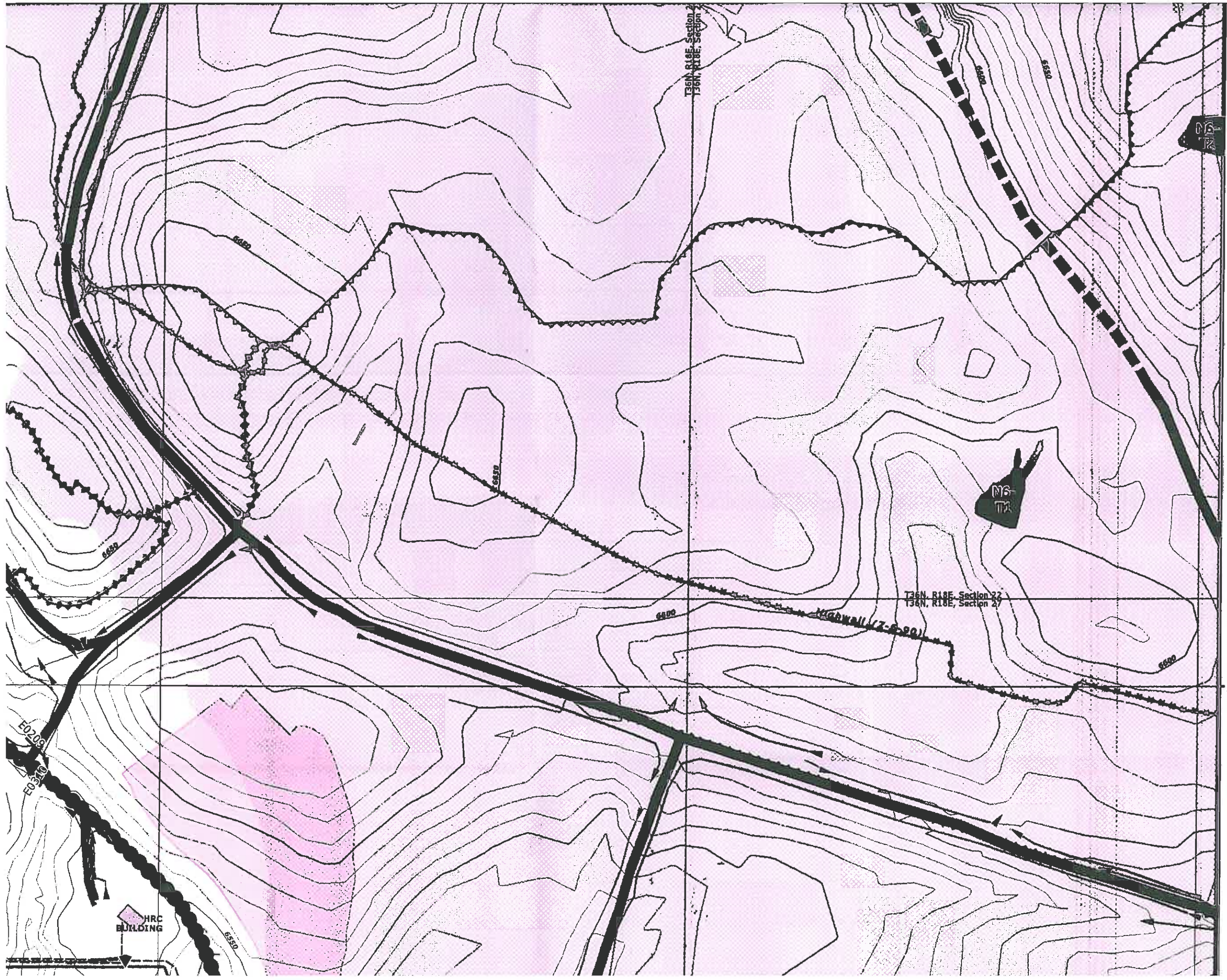
6650

E0206

E0207

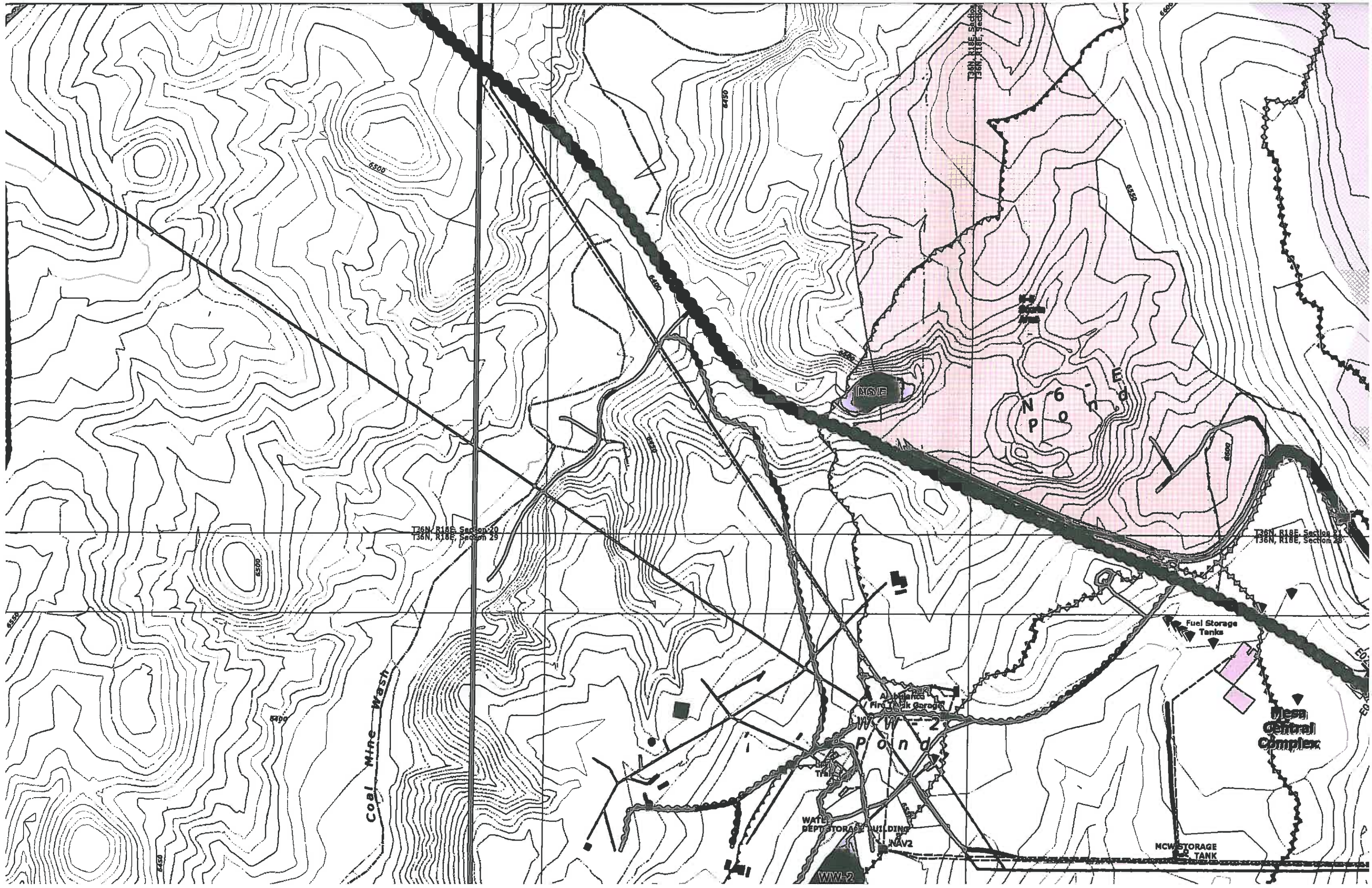
E0208

NO WATER TANK



-15,000

HRC
BUILDING



T36N, R18E, Section 20
T36N, R18E, Section 29

T36N, R18E, Section 21
T36N, R18E, Section 28

Coal Mine Wash

Abandoned
Fire Truck Garage

Pond

Fuel Storage
Tanks

Mesa
Central
Complex

WATER DEPT STORAGE BUILDING

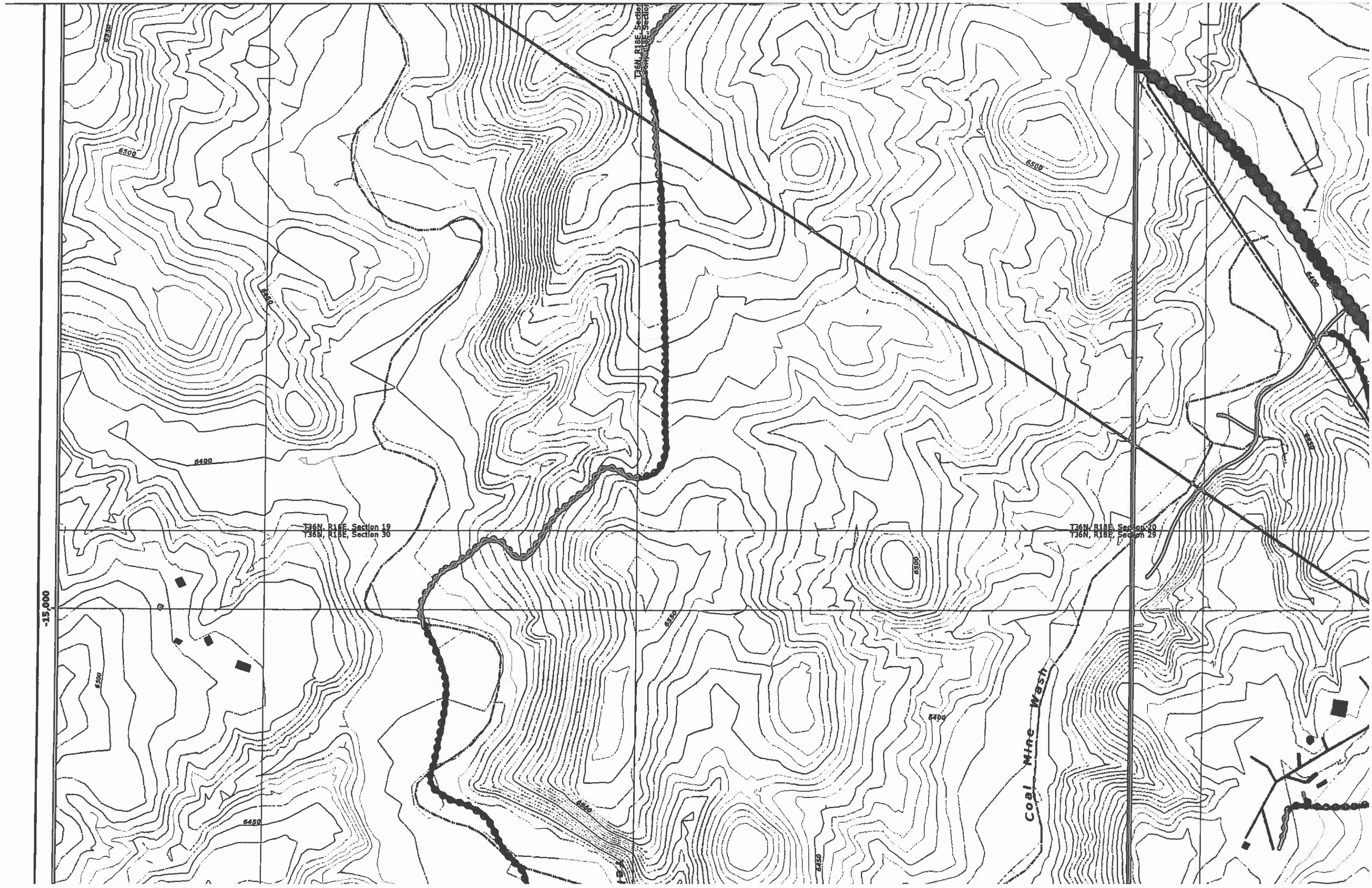
NCW STORAGE
TANK

WW-2

NAV2

NSIE

N
P
6
2
G
M



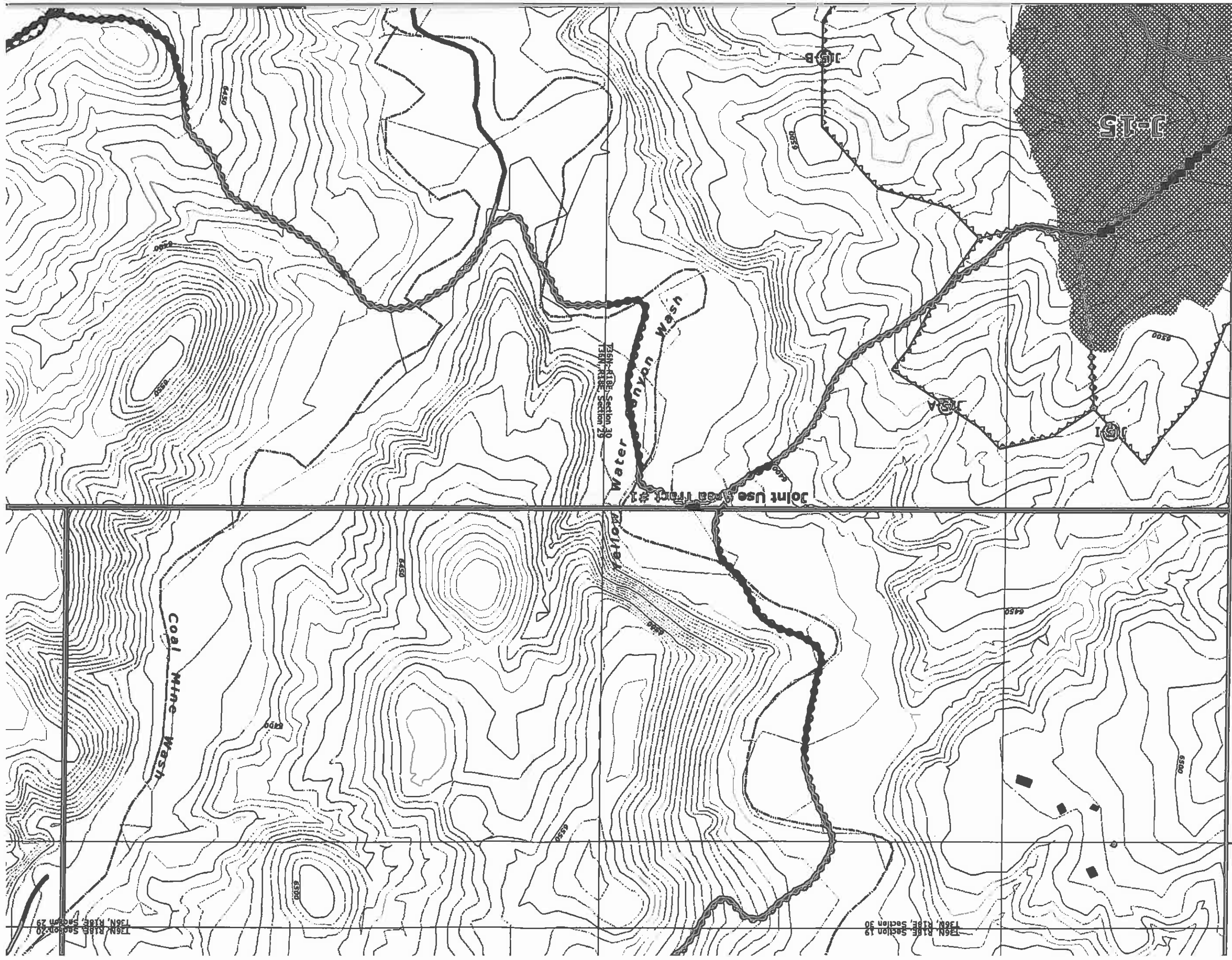
T36N, R18E, Section 19

T36N, R18E, Section 19
T36N, R18E, Section 30

T36N, R18E, Section 20
T36N, R18E, Section 29

Coal Mine Wash

-15,000

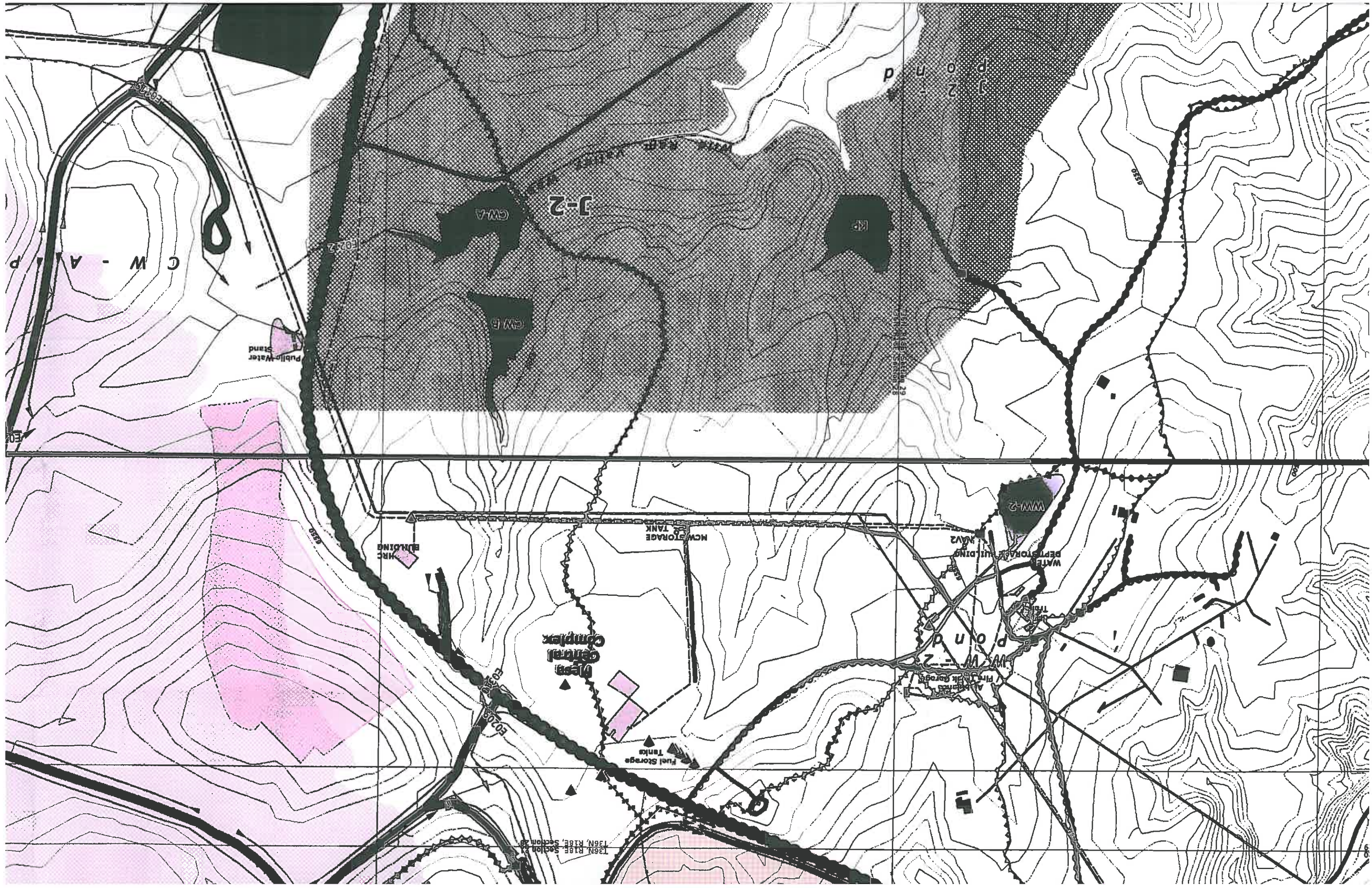


-15,000

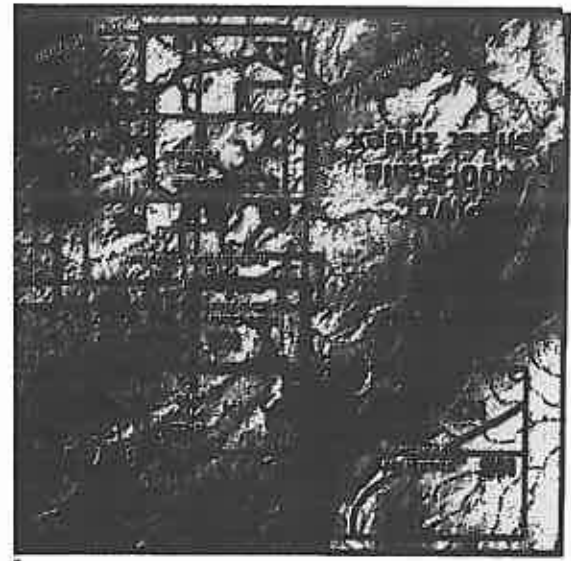
136N, R18E, Section 29

136N, R18E, Section 30

136N, R18E, Section 19







85400 NOTES:

1. SEE DRAWING NO. 85360 FOR THE MINING AFFECTED LANDS.
2. SEE DRAWING NO. 85405 FOR THE GENERAL LOCATION OF THESE STRUCTURES.
3. SEE DRAWING NO. 85460-85490 FOR THE MINE SUPPORT FACILITIES MAP.
4. SEE DRAWING NO. 93500 FOR THE LOCATION OF THE ENVIRONMENTAL MONITORING SITES.
5. SEE CHAPTERS 6-7 AND 20-26 FOR INFORMATION ON THE FACILITIES AND RECLAMATION PLAN.

'DRAINAGE DIRECTION ON FILL EMBANKMENTS ONLY APPLY WHEN MSHA SAFETY BERM EXIST.'

'PRIMARY ROADS HAVE BEEN CONSTRUCTED OR RECONSTRUCTED AS DESIGNED AND IN ACCORDANCE WITH THE APPROVED PLAN.'

MAP REVISIONS

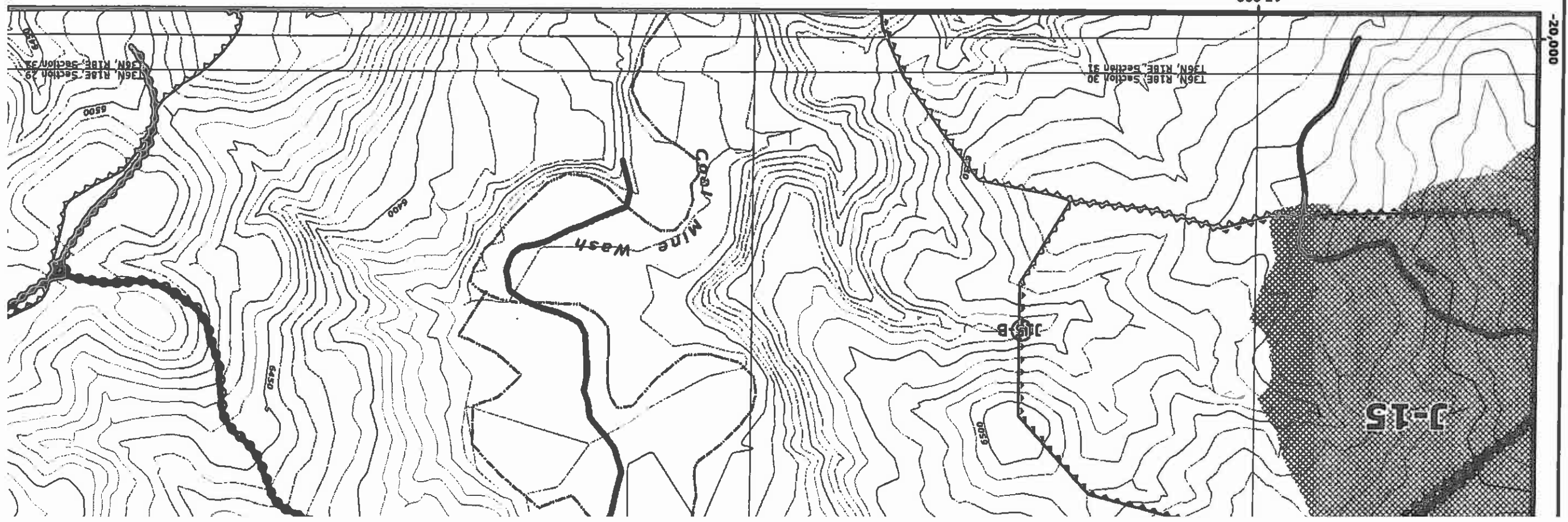
CHK'D	DATE	DESCRIPTION
JES	Aug 15, 2004	OSM Response
JES	Jan 14, 2005	NOI 5 Year Mineplan Rev
JES	Jun 13, 2005	NOI Facilities Revision
JES	Sep 10, 2005	NOI 8, NOI Facilities Revision
JES	Dec 15, 2005	NOI Sequence Revision
JES	Jan 20, 2006	OSM Response
JES	Feb 4, 2006	NOI Road As-Built Response
JES	Feb 24, 2006	NOI Facilities Revision
GW	Apr 12, 2006	TCRs and Roads Revision
JES	May 9, 2006	NOI Road As-Built
JES	Jan 12, 2008	Airport Rd / WVA Waterlines Revision
JES	Aug 30, 2008	Road Alignment Revision
JES	Dec 21, 2007	Software Update / Mine-wide feature updates

ENGINEER'S CERTIFICATION

Date **JAN 04 2008**

James G. Schlemmer

Professional Engineer
 18782
 JAMES G. SCHLEMMER
 ENGINEER REG. NO. 18782
 ENGINEERING BOARD OF PROFESSIONAL ENGINEERS
 STATE OF MONTANA, U.S.A.





20,000

25,000

Water Impoundment Features

- Existing Impoundment/SAE Watershed Boundary
- Proposed Impoundment/SAE Watershed Boundary
- Reclaimed

Mine Area Facilities and Structures

- PWCC Powerline
- Non-PWCC Powerline
- Coal Stockpile
- Scoria Pit
- Explosives Storage Facility
- PWCC Buildings and Structures
- Non-PWCC Buildings / Residences

Culvert Features

- Existing Culvert Watershed Boundary
- Proposed Culvert Watershed Boundary

Mining Status Data

- Future Mining Areas
- Mined-Out Areas
- Highwall (7/6/1990)

Drainages and Diversions

- Major Drainage
- Road Drainage Direction
- Diversions

Other Water Features

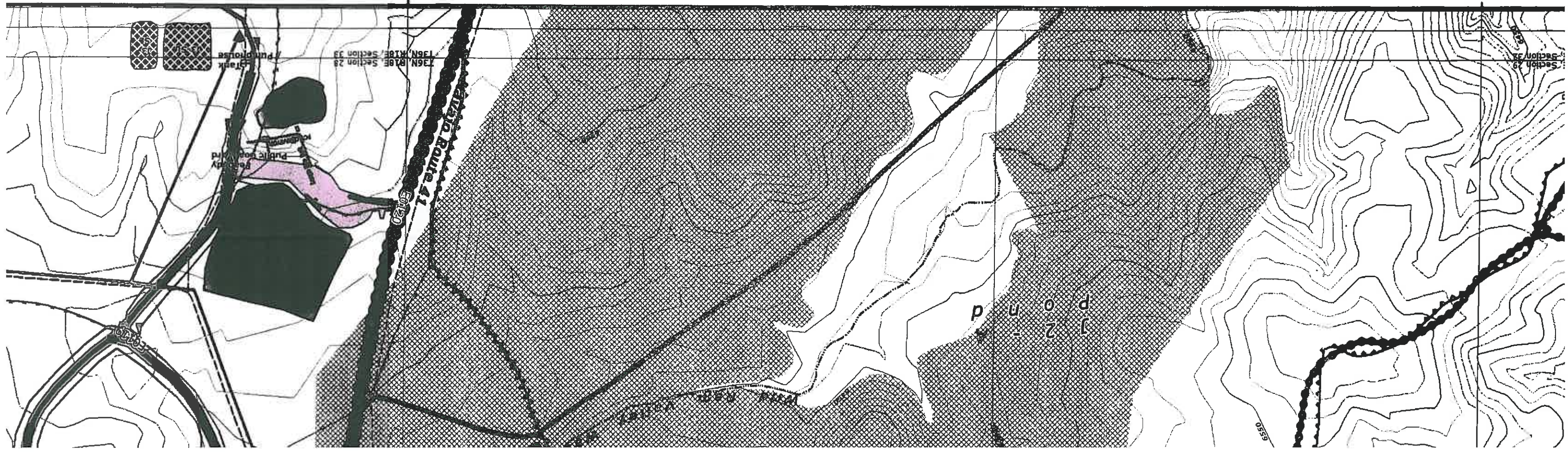
- PWCC Water Line
- Navajo Water Well
- Sewage Facility / Lagoon

Administrative Boundaries

- 01 Permit Line
- 1D Permit Line
- PWCC Lease Line
- Pre-Law Areas
- Navajo-Hopi Partition Line

Transport Features

- PWCC Conveyor
- SRP/NGS Railroad
- PWCC Permit 01
- PWCC Permit 1D
- Primary Road
- Pit Ramp
- Ancillary Road
- Non-Mining Related Road
- Non-Mining Highway



B1

Drainage Area and Facilities Map

Drawing #85400

Sheet K8

Produced by PWCC GIS
 Jan 09, 2008
 1 Inch = 400 Feet
 10 Foot Interval
 Indices at 50 Feet

PEABODY WESTERN
 Black Mesa Complex
 PO Box 650
 Kayenta, Arizona 86033



RTCA Features	Transport Features	Other Water Features	Administrative Boundaries
<ul style="list-style-type: none"> ▲ SPCC Point Feature ☼ Riprap Rock ☼ Rock Checkdam ☼ Silt Fence ☼ Straw Bales ☼ Revegetated Areas 	<ul style="list-style-type: none"> ~ PWCC Conveyor — SRP/NGS Railroad — Primary Road — Pit Ramp — Ancillary Road — Non-Mining Related Road — Non-Mining Highway 	<ul style="list-style-type: none"> ▣ Navajo Water Well ▣ Sewage Facility / Lagoon ▣ Navajo Water Line ▣ PWCC Water Line ▣ Navajo Water Well 	<ul style="list-style-type: none"> ▣ 01 Permit Line ▣ PWCC Lease Line ▣ Pre-Law Areas ▣ 1D Permit Line ▣ Navajo-Hopi Partition Line

