

**ENGINEER'S CERTIFICATION**

Date JAN 04 2008

James G. Stollenwerk  
Professional Engineer  
License No. 18782  
State of Nevada

**MAP REVISIONS**

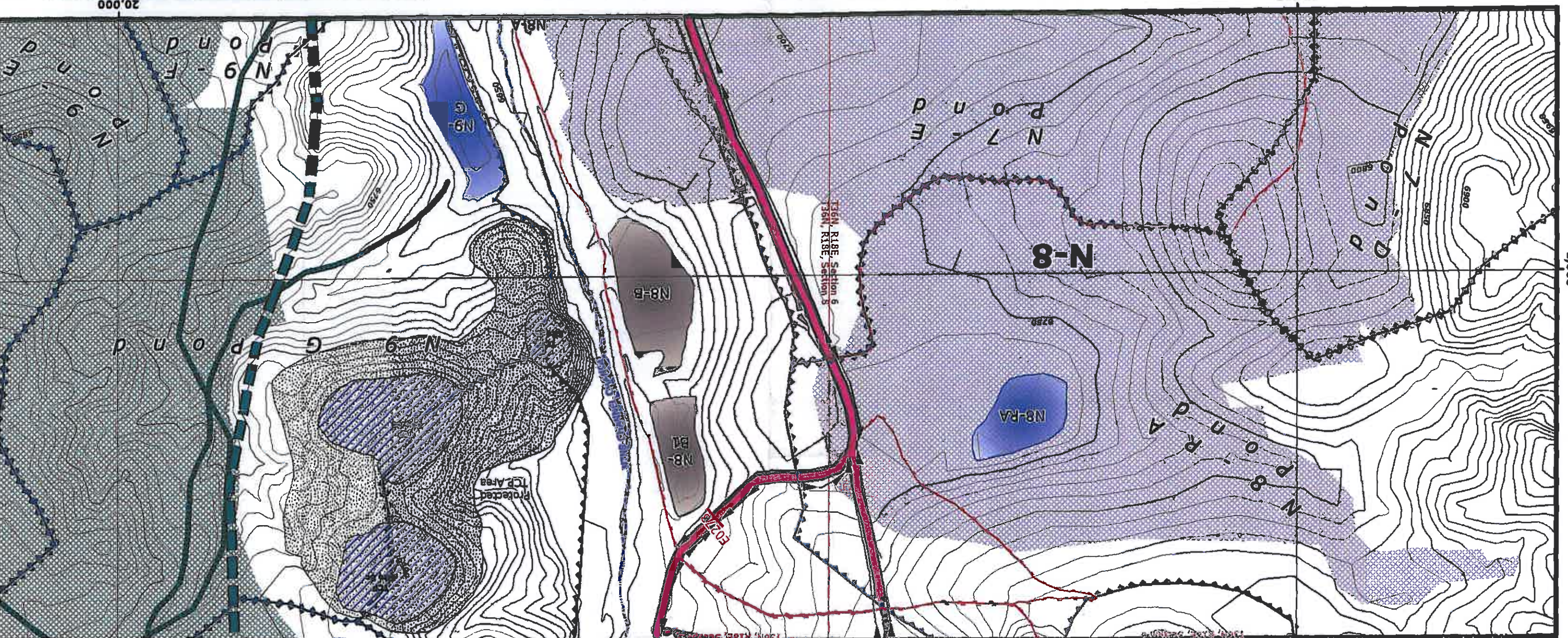
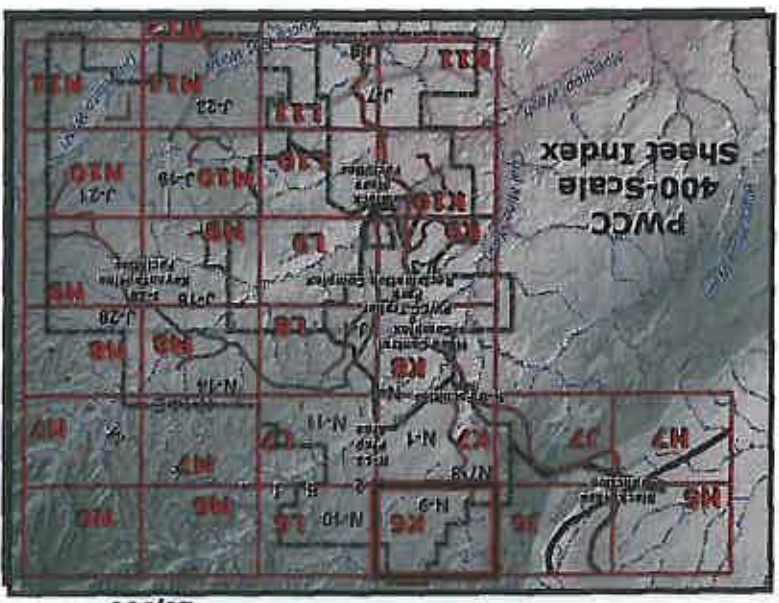
CHK'D	DATE	DESCRIPTION
JGS	Aug 13, 2004	OSM Response
JGS	Jan 14, 2005	NO9 3 Year Mineplan Rev
JGS	Jan 18, 2005	NO9 Facilities Revision
JGS	Sep 30, 2005	NO9 & NO8 Facilities Revision
JGS	Dec 15, 2005	NO9 Sequence Revision
JGS	Jan 20, 2006	OSM Response
JGS	Feb 4, 2006	NO8 Road As-Built Response
JGS	Feb 24, 2006	NO9 Facilities Revision
GW	Apr 12, 2006	TCPs and Roads Revision
JGS	May 9, 2006	NO9 Road As-Built
JGS	Jul 12, 2006	Airport Rd / WWS Waterline Revision
JGS	Aug 30, 2006	Road Alignment Revision
JGS	Dec 21, 2007	Software Update / Mine-wide feature updates

**85400 NOTES:**

1. SEE DRAWING NO. 85360 FOR THE MINING AFFECTED LANDS.
2. SEE DRAWING NO. 85405 FOR THE GENERAL LOCATION OF THESE STRUCTURES.
3. SEE DRAWING NO. 85460-85490 FOR THE MINE SUPPORT FACILITIES MAP.
4. SEE DRAWING NO. 83500 FOR THE LOCATION OF THE ENVIRONMENTAL MONITORING SITES.
5. SEE CHAPTERS 6-7 AND 20-26 FOR INFORMATION ON THE FACILITIES AND RECLAMATION PLAN.

"DRAINAGE DIRECTION ON FILL EMBANKMENTS ONLY APPLY WHEN MSHA SAFETY BEAM EXIST."

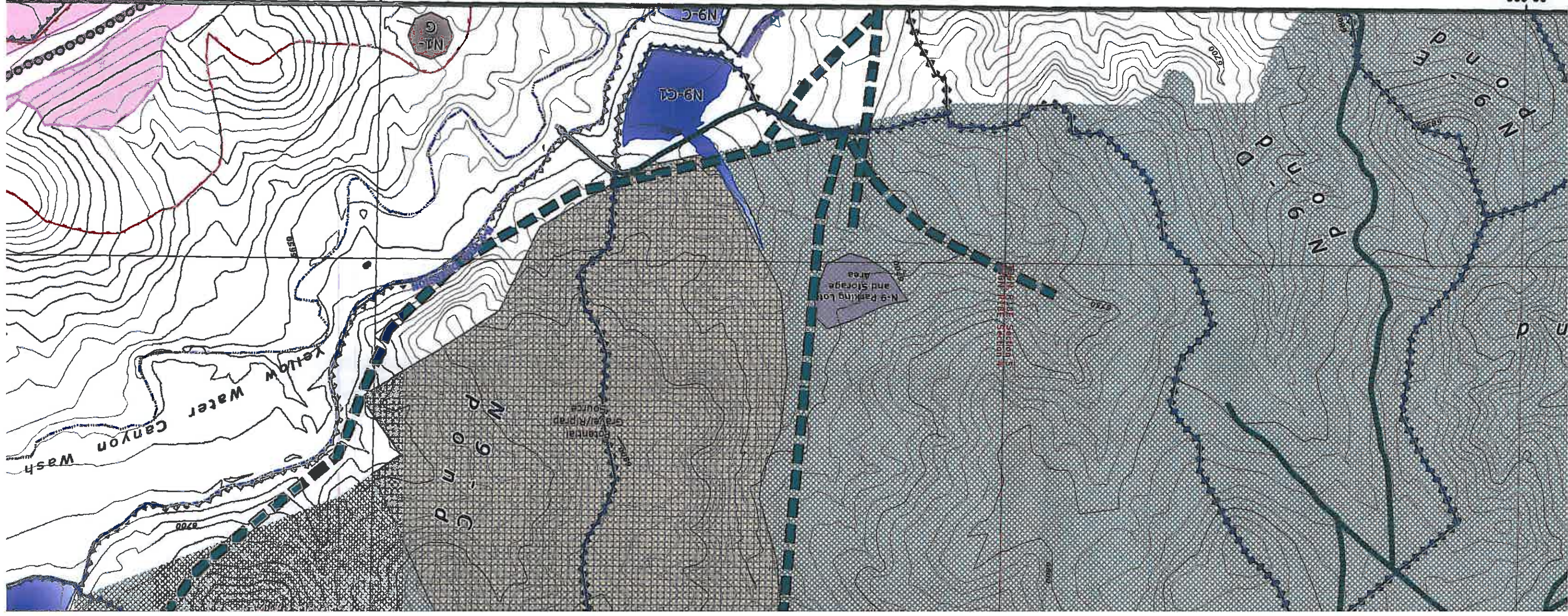
"PRIMARY ROADS HAVE BEEN CONSTRUCTED OR RECONSTRUCTED AS DESIGNED AND IN ACCORDANCE WITH THE APPROVED PLAN."





20,000

25,000



### Water Impoundment Features

- Existing (Blue outline)
- Proposed (Light Blue outline)
- Reclaimed (Dark Blue outline)
- Impoundment/SAE Watershed Boundary (Blue outline)

### Mine Area Facilities and Structures

- PWCC Powerline (Yellow line)
- Non-PWCC Powerline (Green line)
- Coal Stockpile (Black outline)
- Scoria Pit (Black outline)
- Explosives Storage Facility (Black outline)
- Non-PWCC Buildings / Structures (Green square)

### Culvert Features

- Existing (Red line)
- Proposed (Orange line)
- Culvert Watershed Boundary (Black outline)

### Mining Status Data

- Future Mining Areas (Dotted pattern)
- Mined-Out Areas (Cross-hatched pattern)
- Highwall (7/6/1990) (Black arrow)

### Drainages and Diversions

- Major Drainage (Blue line)
- Road Drainage Direction (Black arrow)
- Diversions (Black line)

### Other Water Features

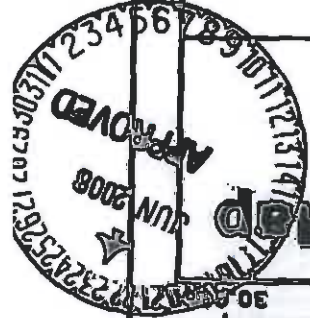
- PWCC Water Line (Blue line)
- Navajo Water Well (Black square)
- Sewage Facility / Lagoon (Cross-hatched area)

### Administrative Boundaries

- 01 Permit Line (Black outline)
- 1D Permit Line (Black outline)
- PWCC Lease Line (Pink outline)
- Navajo-Hopi Partition Line (Red dashed line)

### Transport Features

- PWCC Conveyor (Wavy line)
- SRP/NGS Railroad (Black line with cross-ticks)
- PWCC Permit 01 (Black line)
- PWCC Permit 1D (Black line)
- Primary Road (Black line)
- Pit Ramp (Black line with cross-ticks)
- Ancillary Road (Black line)
- Non-Mining Related Road (Black line)
- Non-Mining Highway (Black line)

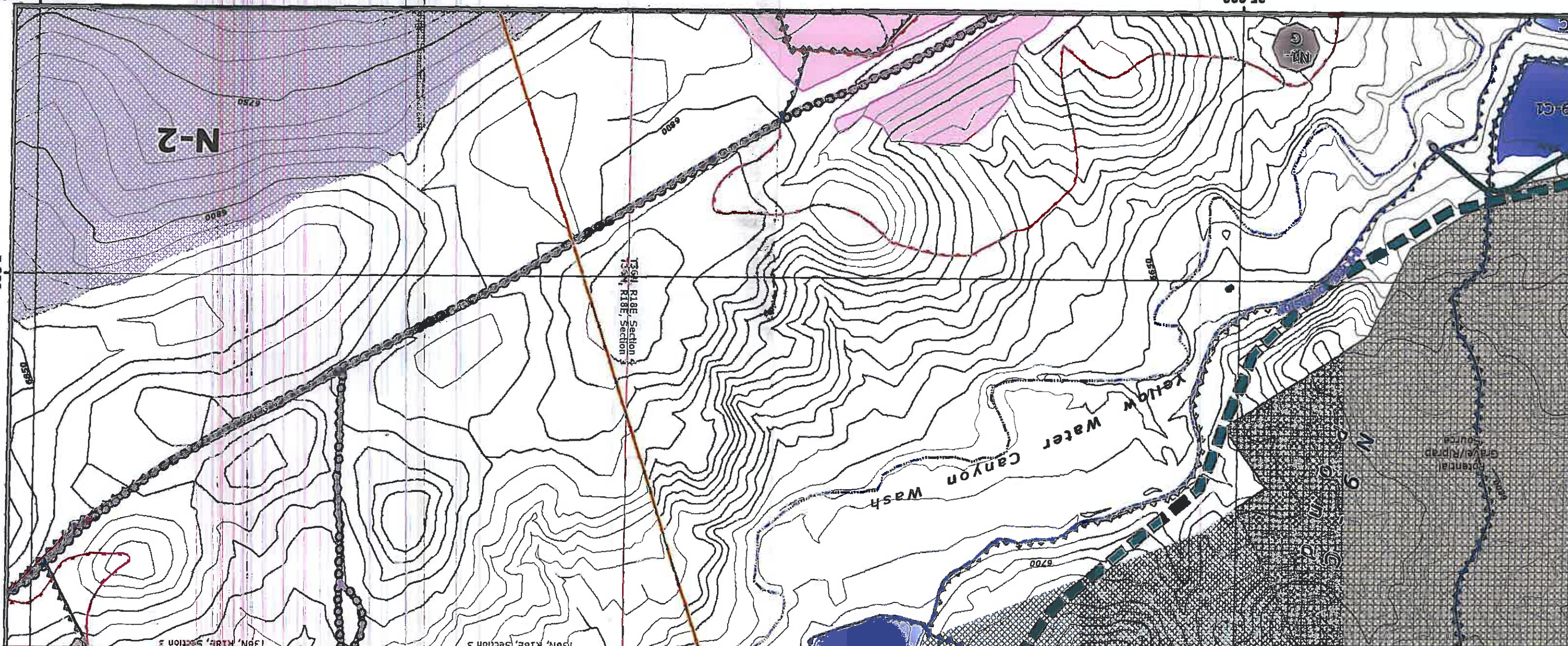


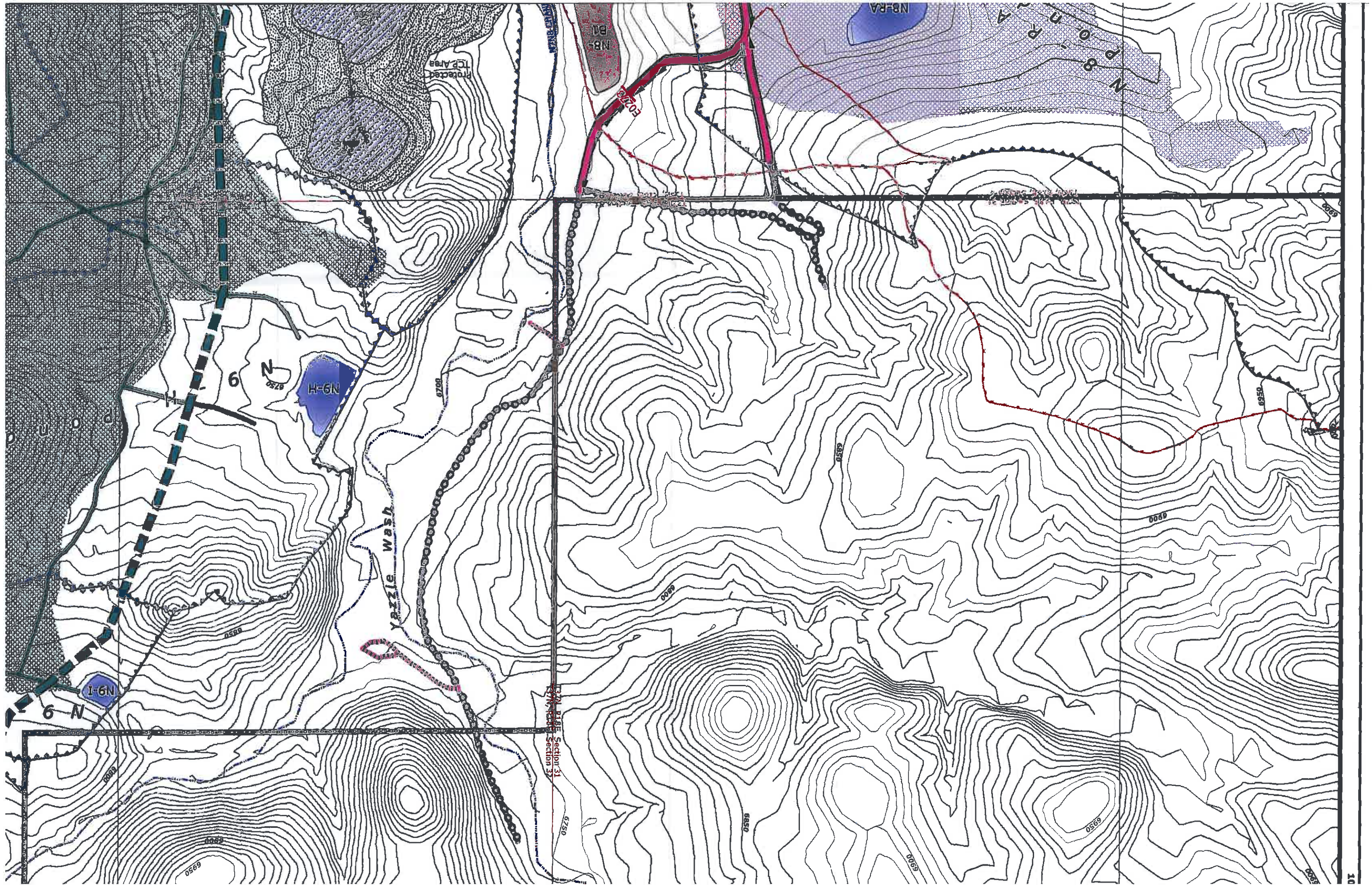
**PEABODY WESTERN**  
 Black Mesa Complex  
 PO Box 850  
 Kayenta, Arizona 86033

Produced by PWCC GIS  
 Jan 09, 2008  
 1 Inch = 400 Feet  
 10 foot Interval  
 Indices at 50 feet

**Drainage Area and Facilities Map**  
**Drawing #85400**  
**Sheet K6**

RTCA Features	Riprap Rock	Rock Checkdam	Silt Fence	Straw Bales	Revegetated Areas	SPCC Point Feature
PWCC Conveyor	SRP/NGS Railroad	PWCC Permit 01	PWCC Permit 1D	Primary Road	Pit Ramp	Ancillary Road
PWCC Water Line	Navajo Water Well	Sewage Facility / Lagoon	Pre-Law Areas	01 Permit Line	1D Permit Line	PWCC Lease Line
Other Water Features	Navajo-Hopi Partition Line	Administrative Boundaries	Non-Mining Highway	Non-Mining Related Road	Non-Mining Highway	





Protected  
TCP Area

Section 31  
Section 32

Yazlie Wash

H-6N

I-6N

6

N

6

N

6750

6850

6950

6950

6900

6850

6950

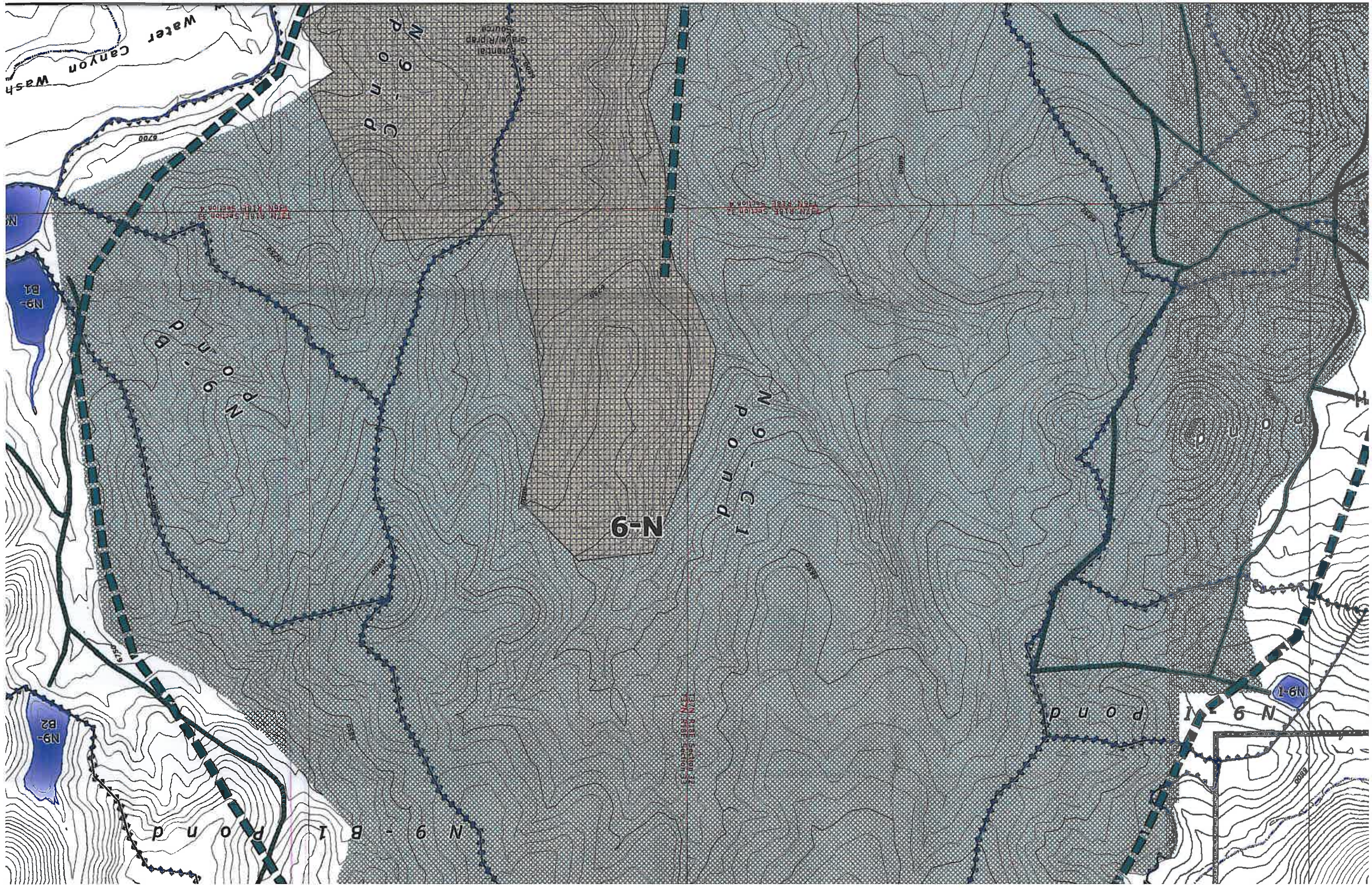
6950

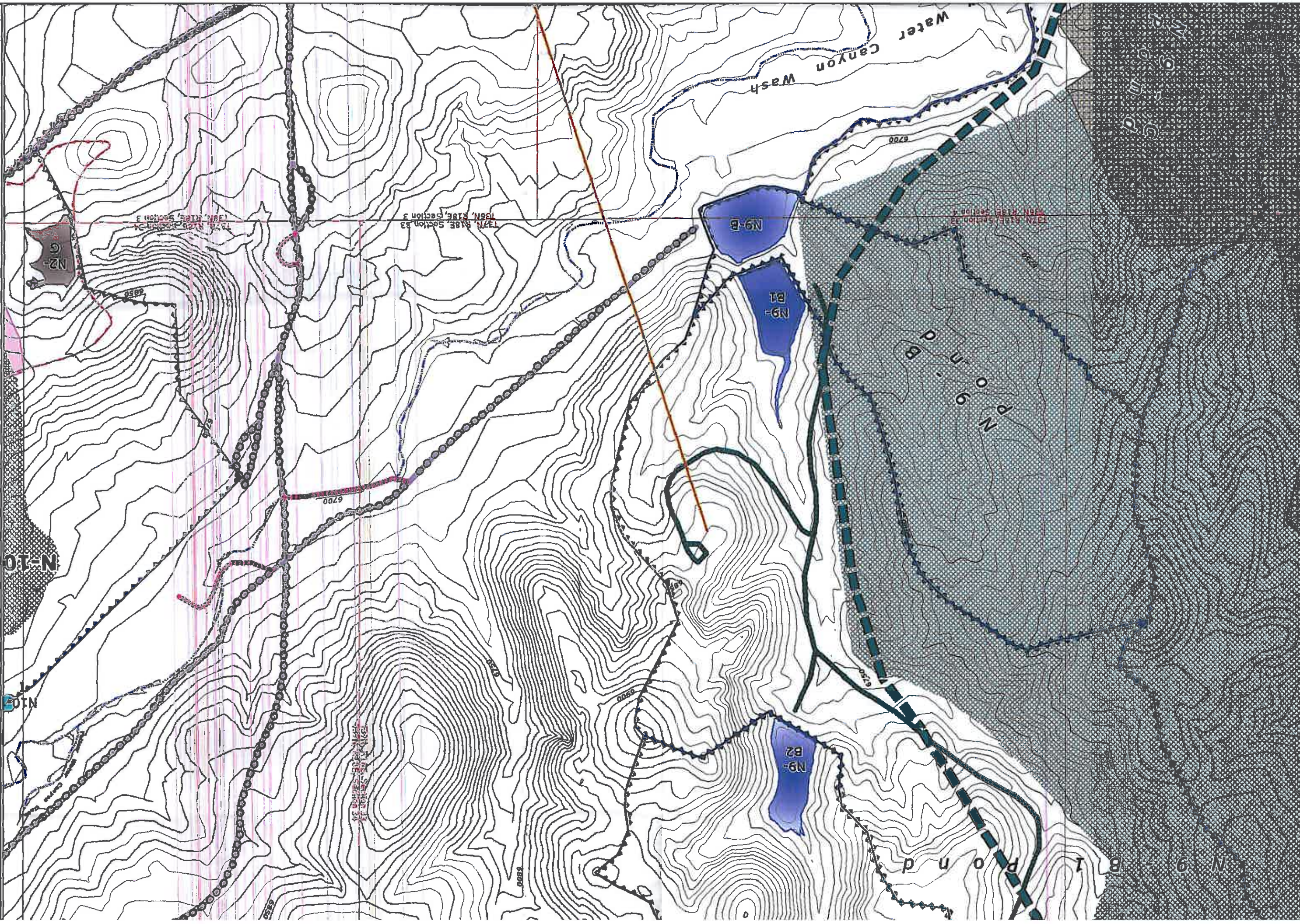
NB-RA  
B1

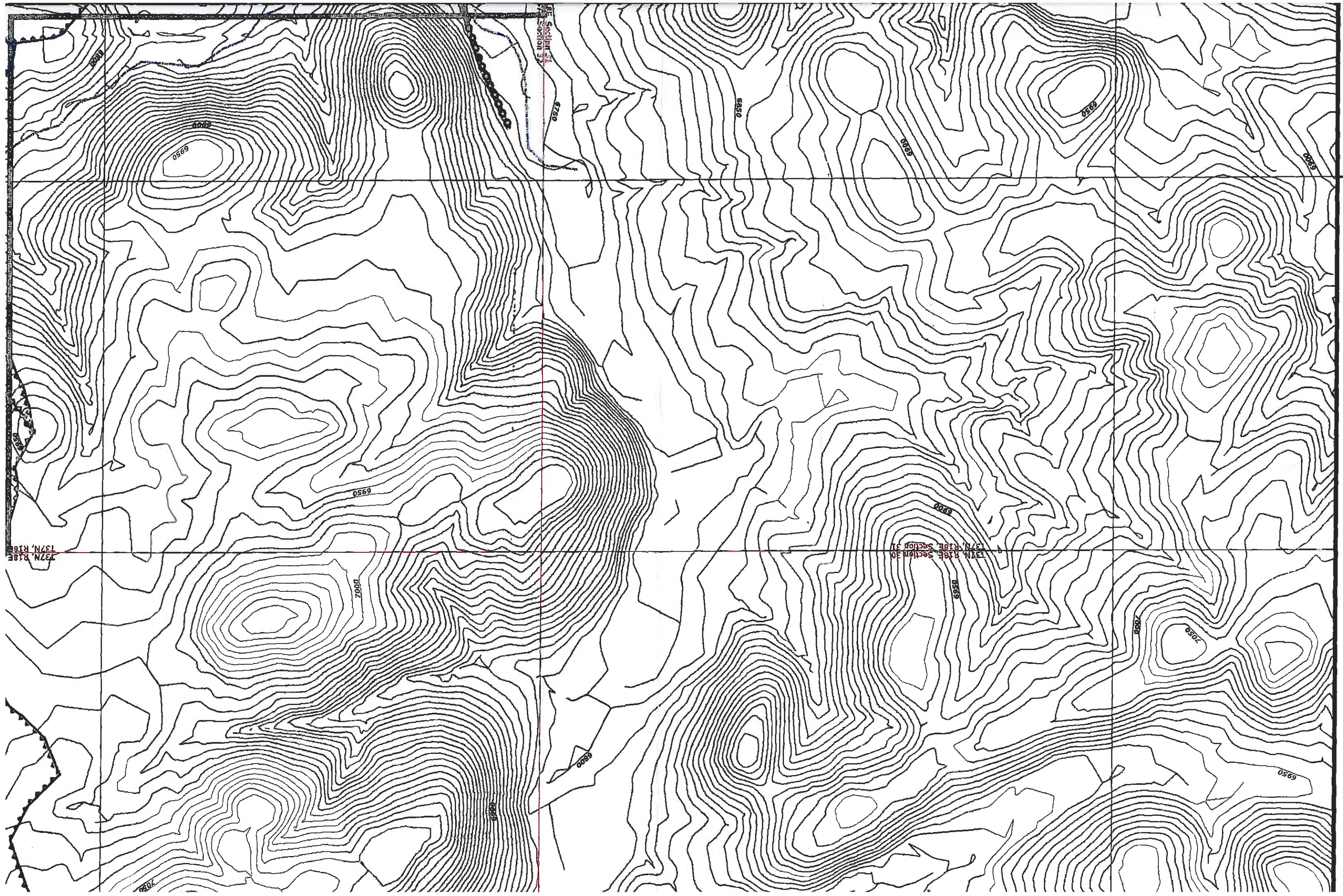
E0200

NB-RA

N  
P  
O  
P  
A







10,000

6950

7050

6968

6900

6850

6720

6550

6600

6550

6662

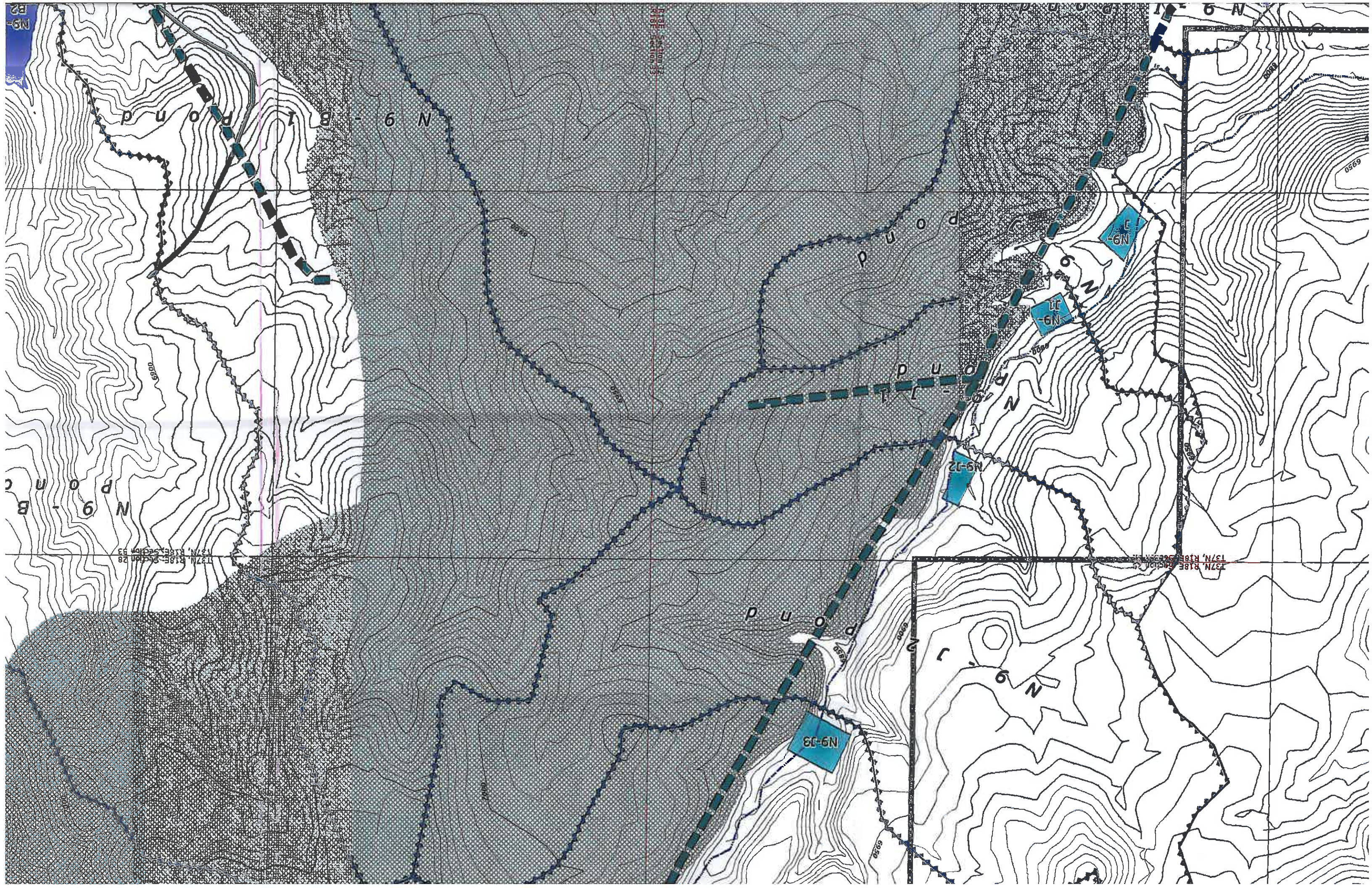
137N, R18E

137N, R18E, Section 30

137N, R18E, Section 31

7050

6800





10,000

R188 Section 33  
R188 Section 34

N9-B2

N 9 - B 1  
P o n d

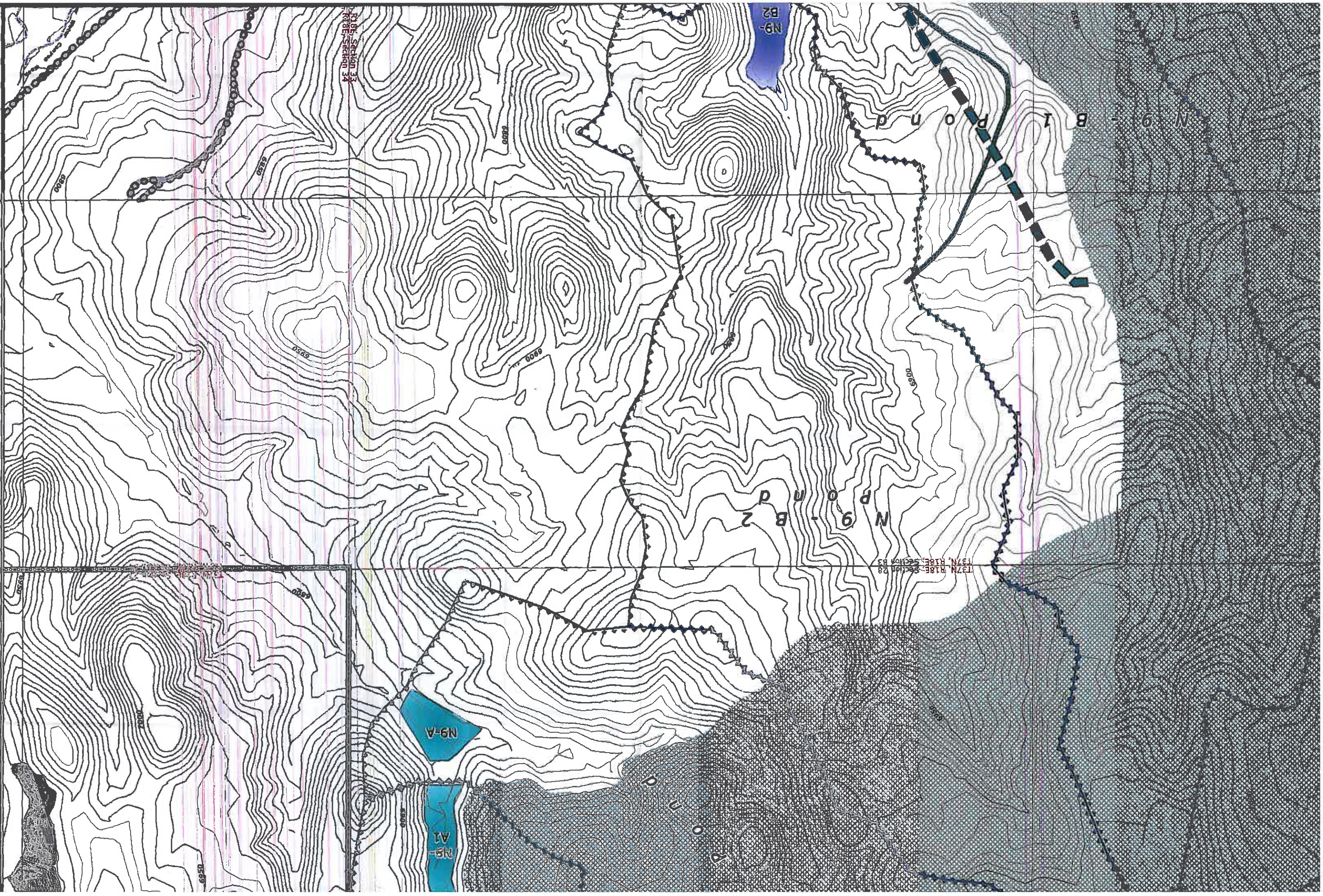
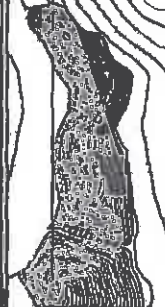
N 9 - B 2  
P o n d

R187 Section 28  
R187 Section 29

N9-A

N9-A1

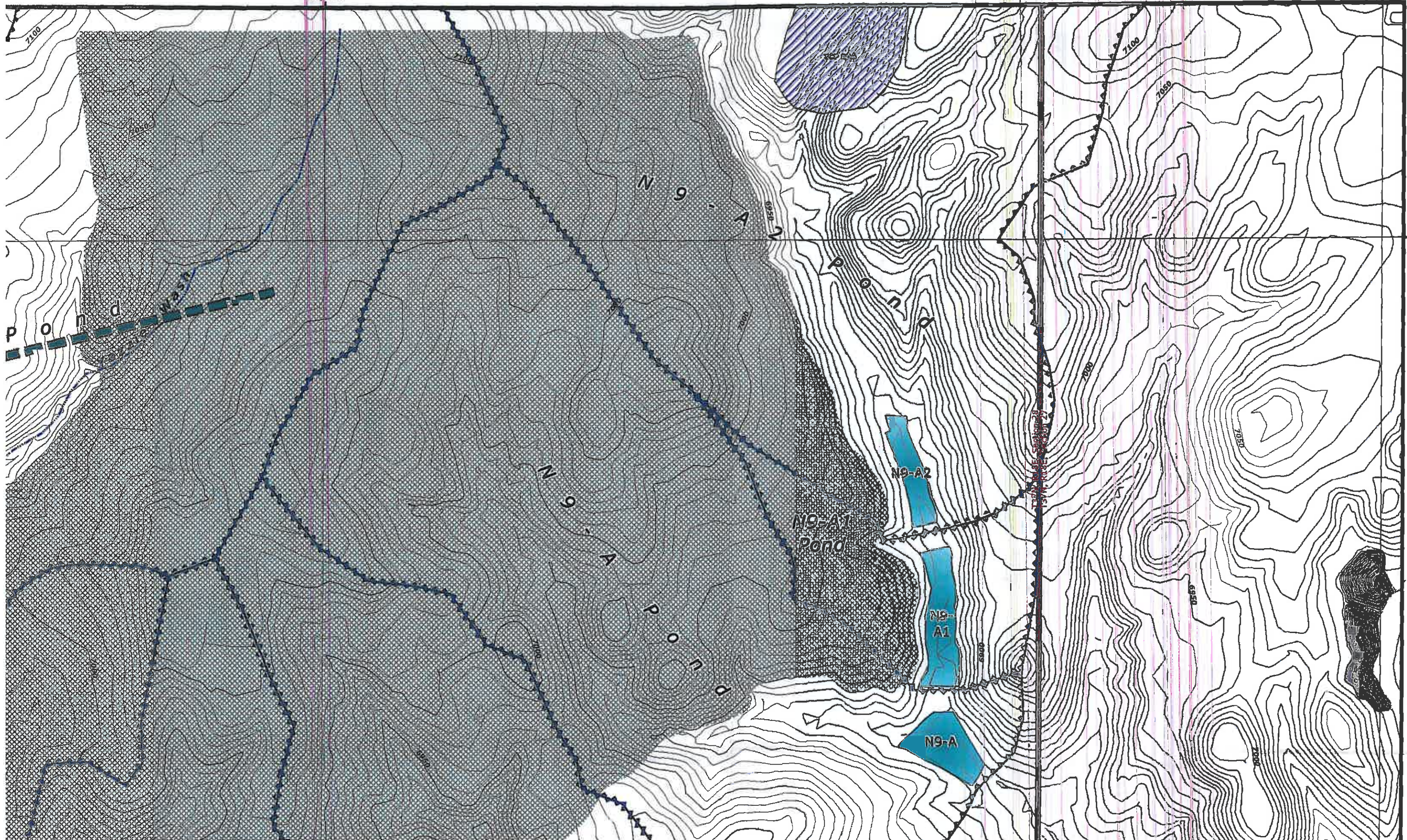
N 9 - B 2  
P o n d



25,000

30,000

15,000



20,000

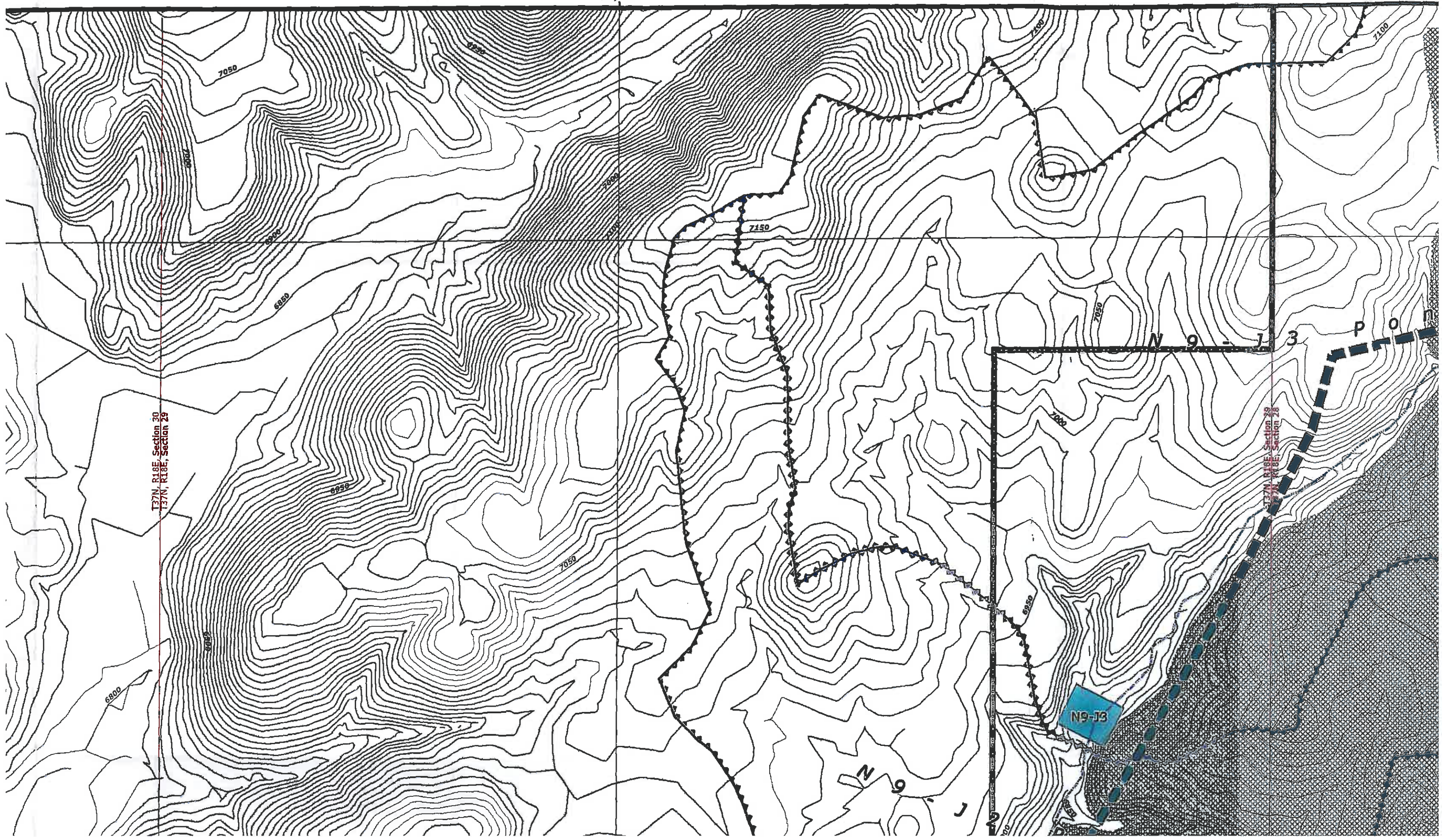
T37N, R18E, Section 30  
T37N, R18E, Section 29

T37N, R18E, Section 29  
T37N, R18E, Section 28

N9-J3

N 9 - J 3 P O N

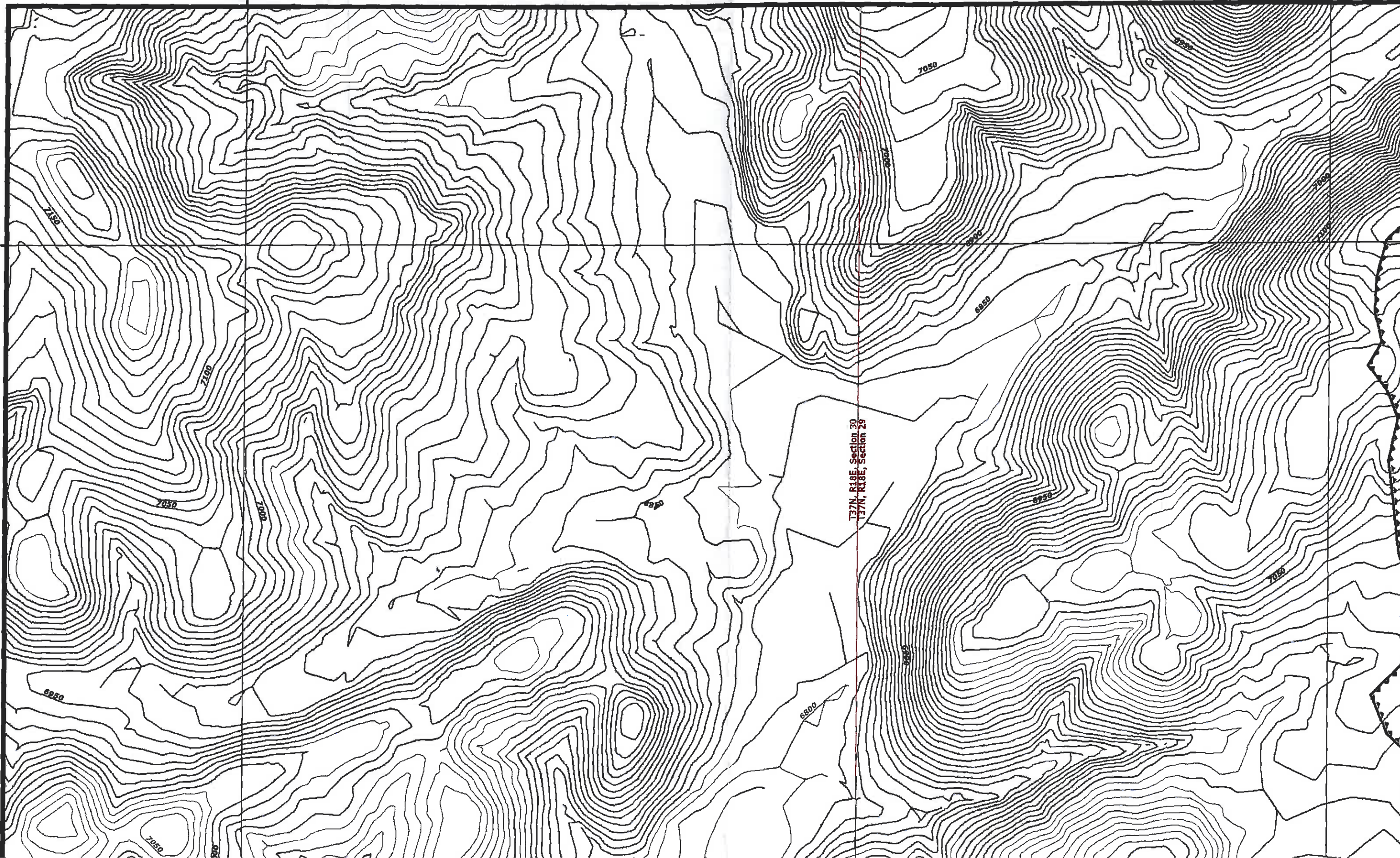
N 9 - J 3



15,000

20,000

15,000



137N, R18E, Section 30  
137N, R18E, Section 29

7050

6900

6850

6950

7050

7050

7000

7200

7150

6950

7050

800

6800

6850

6900

7000

7050

7250