

20,000

25,000

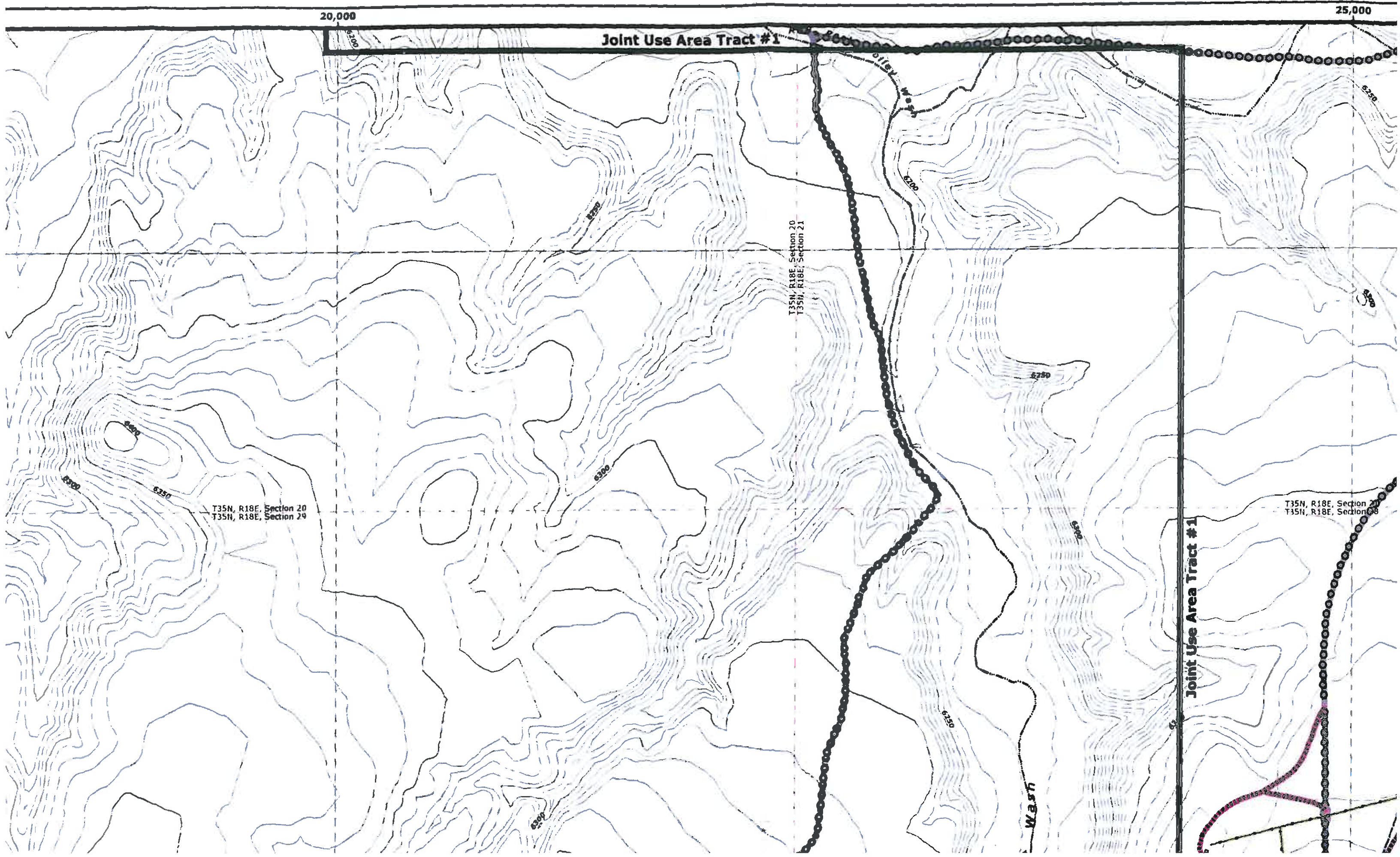
Joint Use Area Tract #1

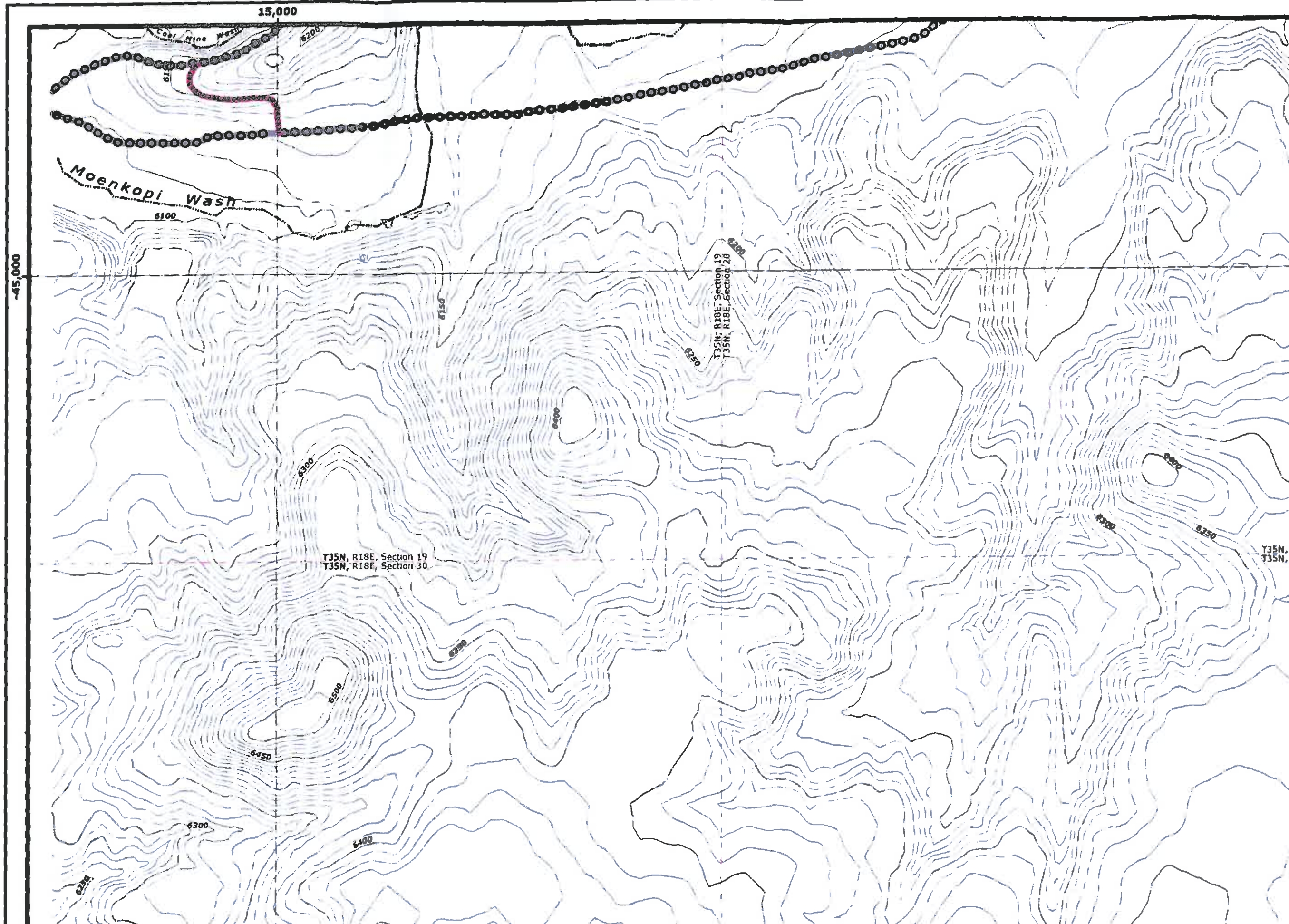
Joint Use Area Tract #1

T35N, R18E, Section 20
T35N, R18E, Section 29

T35N, R18E, Section 20
T35N, R18E, Section 21

T35N, R18E, Section 20
T35N, R18E, Section 28





15,000

45,000

Moenkopi Wash

6100

6300

T35N, R18E, Section 19
T35N, R18E, Section 30

6500

6300

6400

6200

T35N, R18E, Section 19
T35N, R18E, Section 20

T35N, R18E, Section 19
T35N, R18E, Section 20

Coal Mine Wash

6200

6100

6300

6400

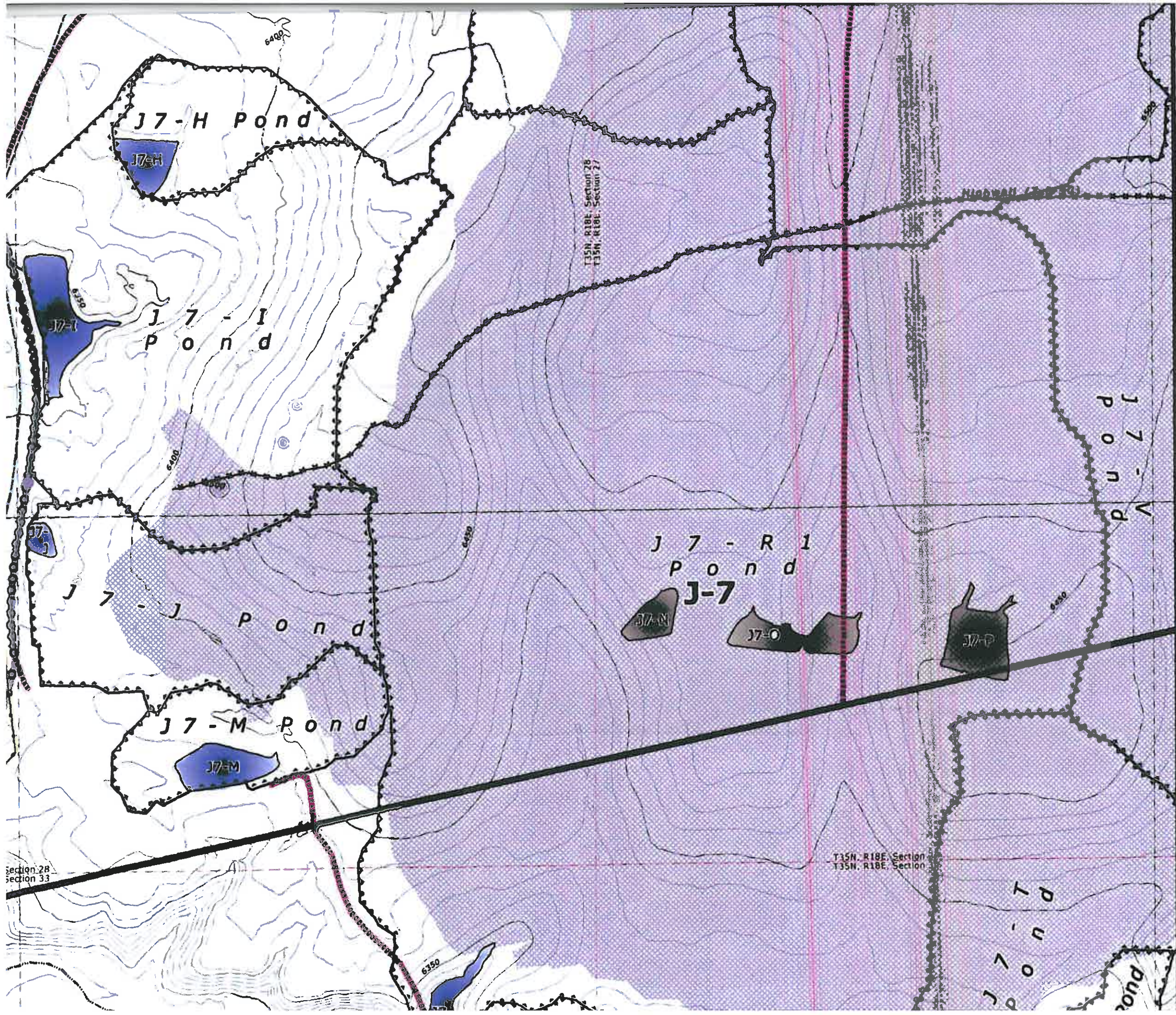
6250

6500

6700

6250

6250



J7-H Pond

J7-H

J7-I Pond

J7-I

J7-J Pond

J7-J

J7-M Pond

J7-M

J7-R1 Pond

J7-N

J7-O

J7-P

J7-V Pond

J7-T Pond

Pond

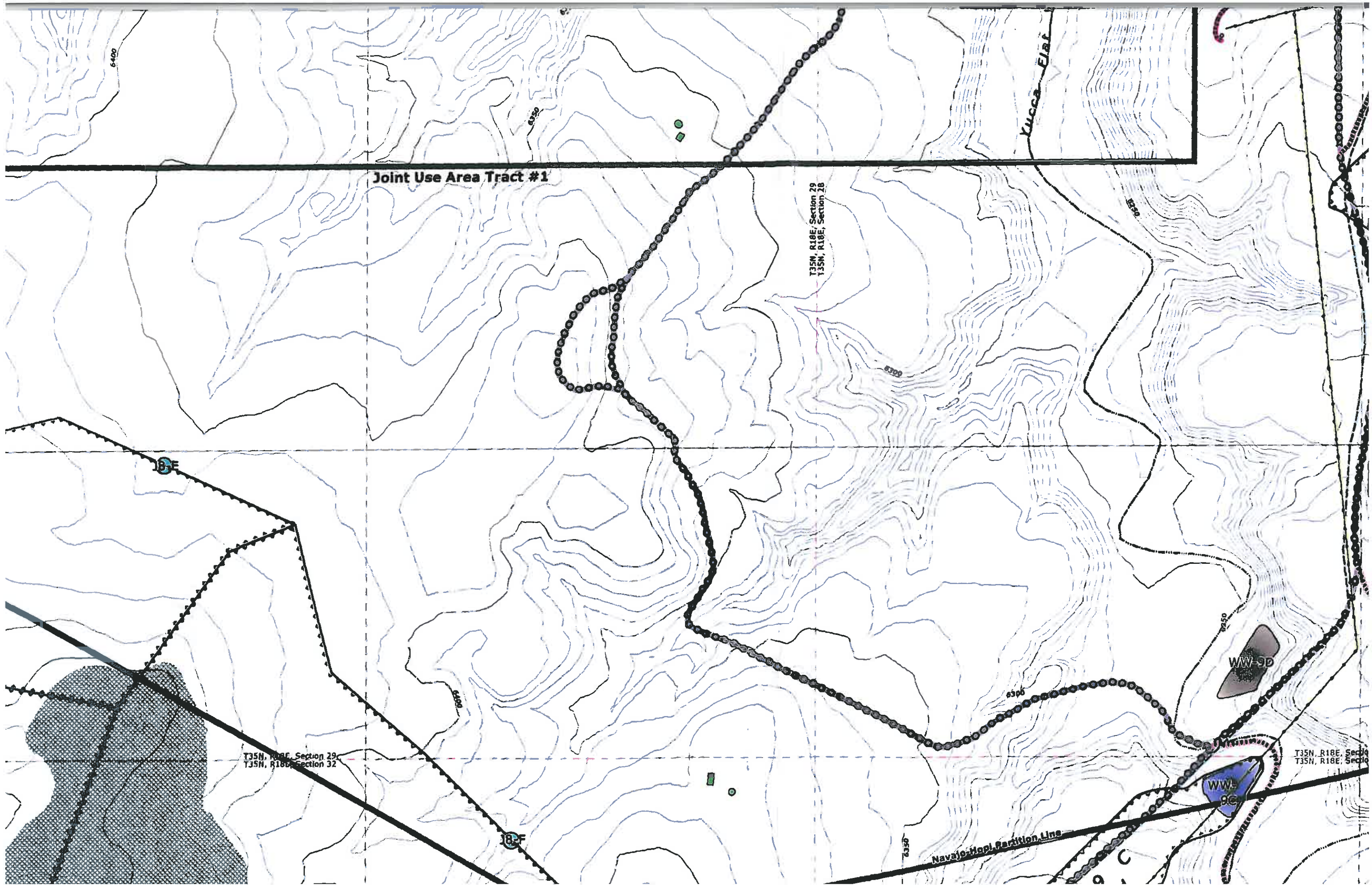
T35N, R18E, Section 28
T35N, R18E, Section 27

HIGWAY 73 (R)

T35N, R18E, Section 28
T35N, R18E, Section 27

Section 28
Section 33

-50,000



Joint Use Area Tract #1

T35N, R18E, Section 29
T35N, R18E, Section 28

T35N, R18E, Section 29
T35N, R18E, Section 32

T35N, R18E, Section 29
T35N, R18E, Section 30

Yucca Flat

Navajo-Hopi Partition Line

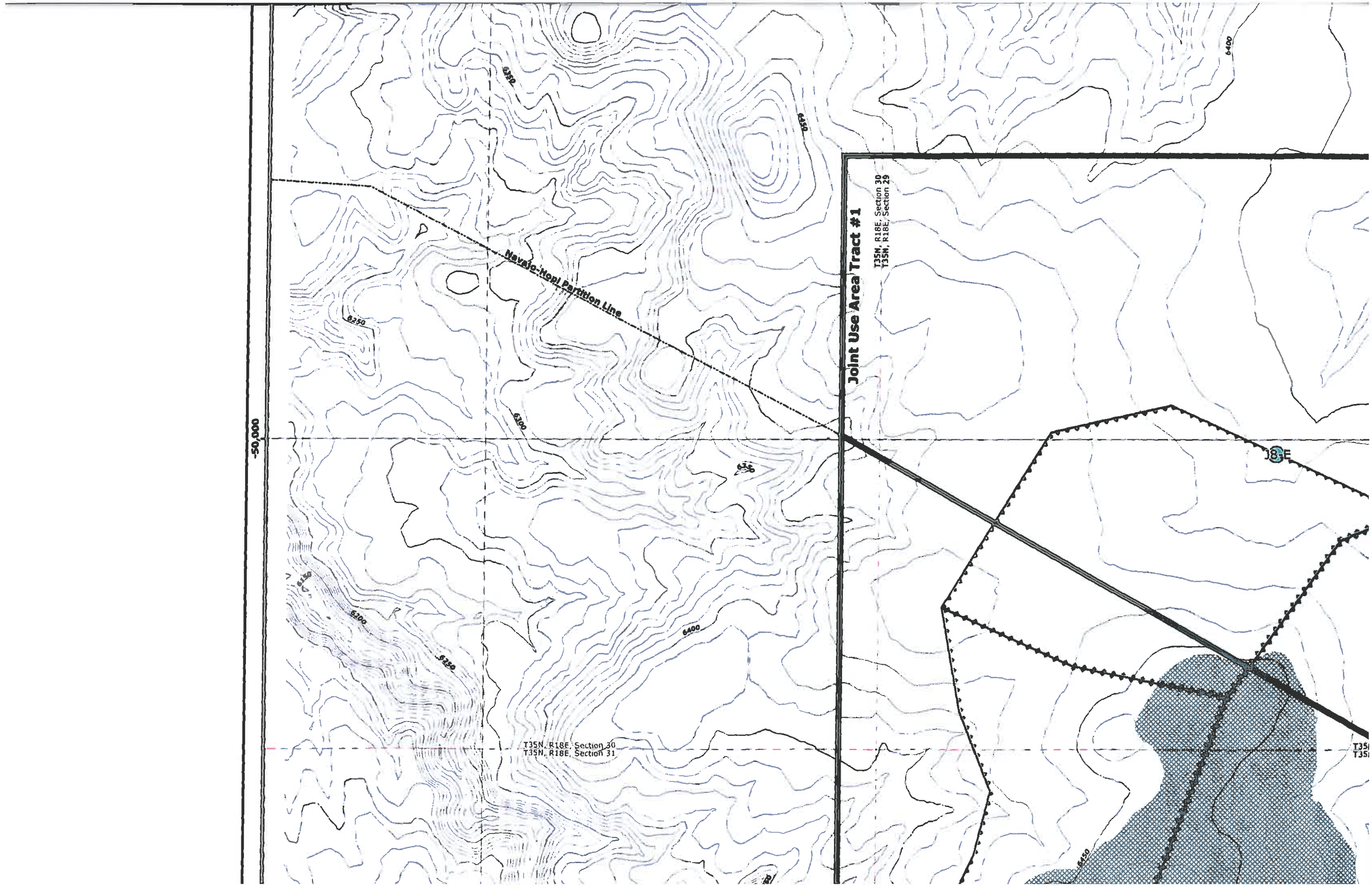
WW-9D

WW-9C

16E

16E

16C



-50,000

Navajo-Hopi Partition Line

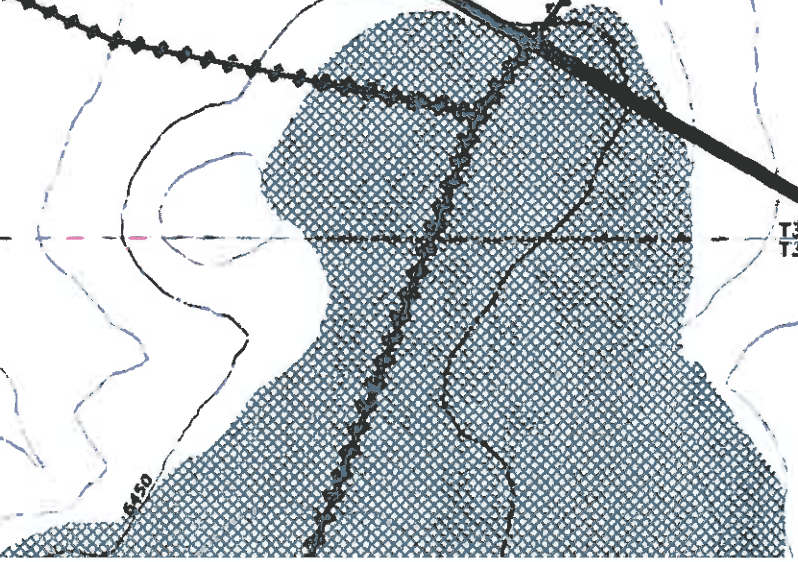
Joint Use Area Tract #1

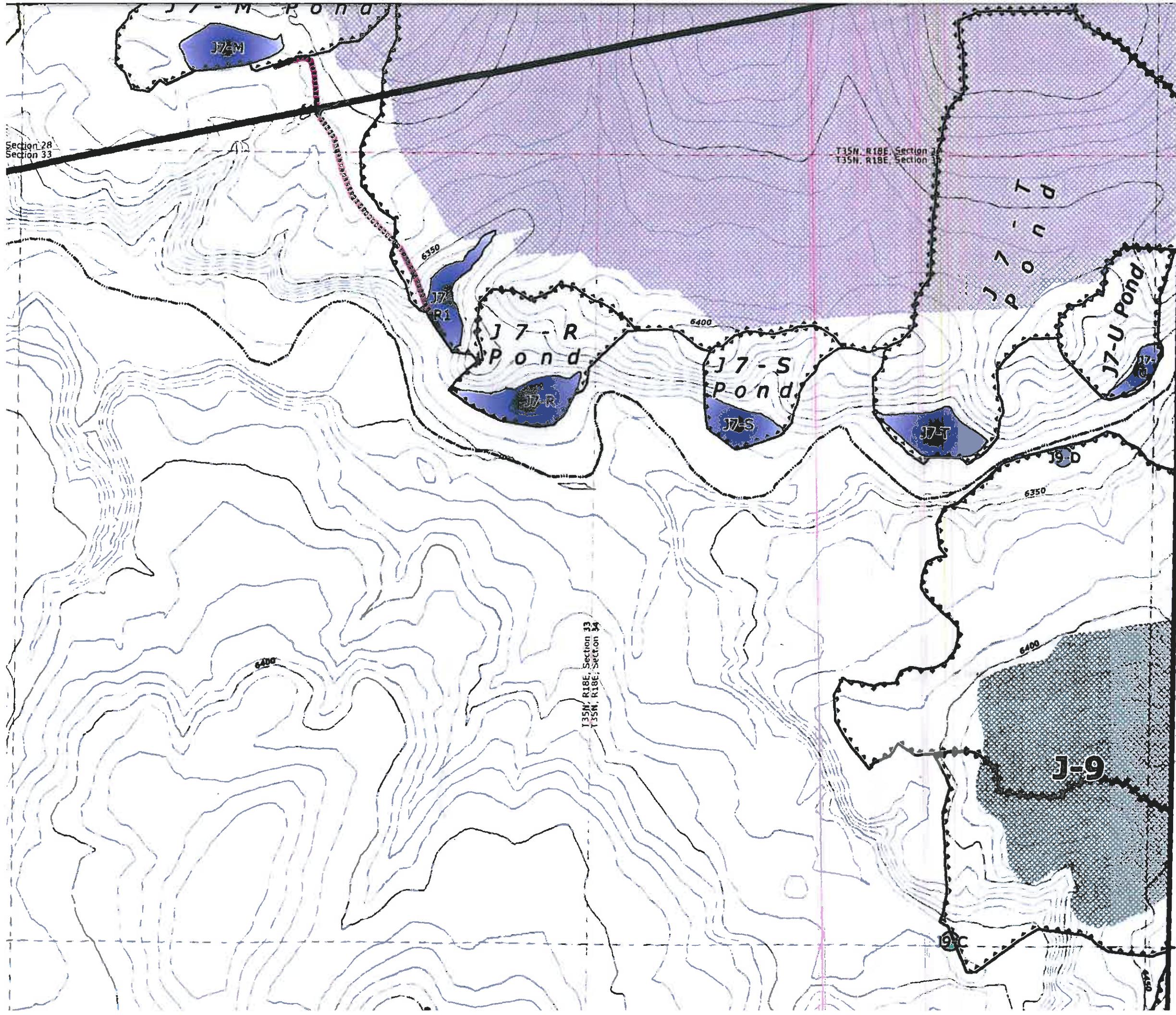
T35N, R18E, Section 30
T35N, R18E, Section 29

T35N, R18E, Section 30
T35N, R18E, Section 31

18E

T35N
T35E



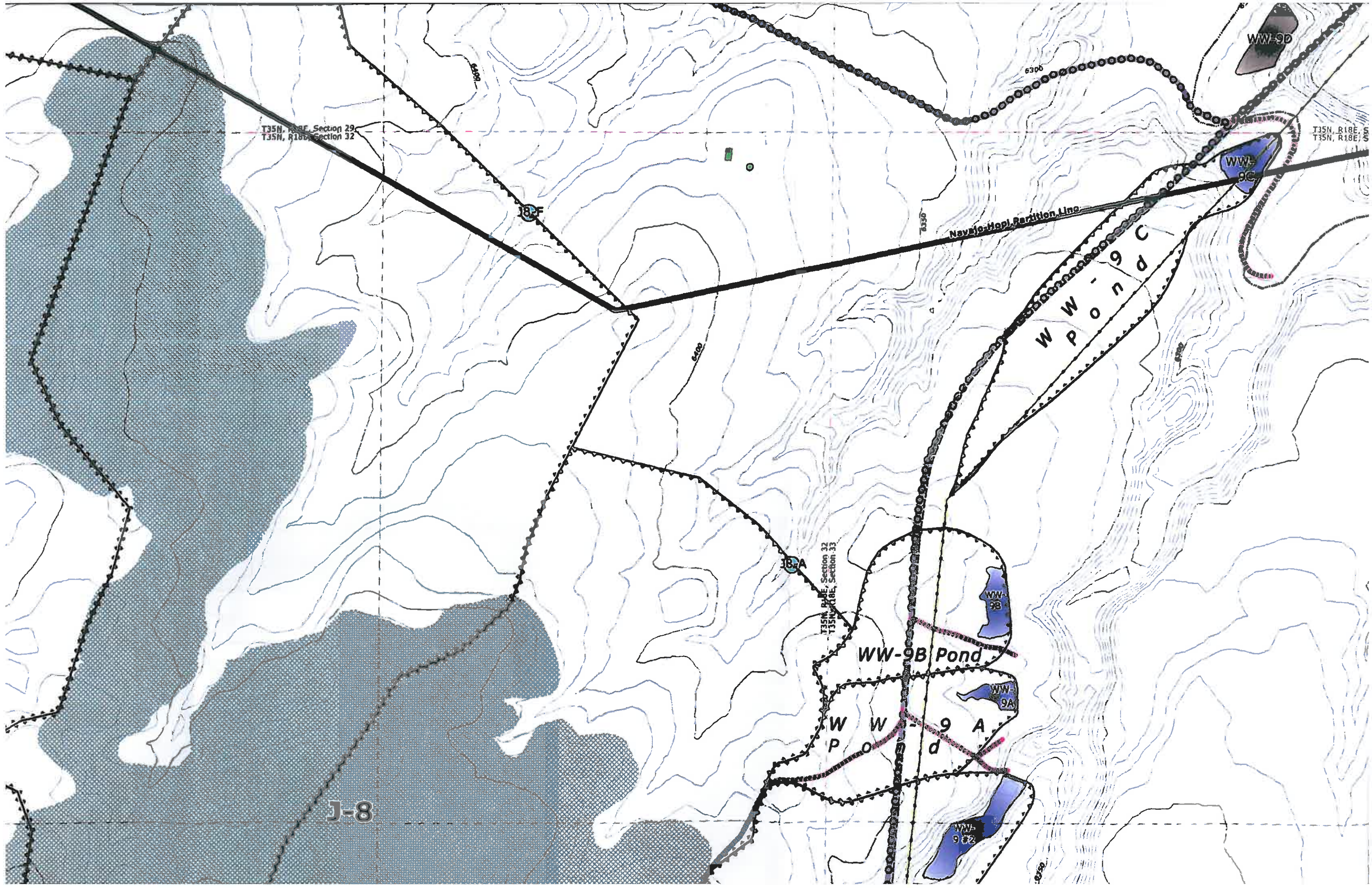


Section 28
Section 33

T35N, R18E, Section 34
T35N, R18E, Section 35

T35N, R18E, Section 33
T35N, R18E, Section 34

-55,000



T35N, R18E, Section 29
T35N, R18E, Section 32

T35N, R18E, Section 33
T35N, R18E, Section 34

Navajo-Hopi Partition Line

WW-9C
P O N D

WW-9B Pond

WW-9A
P O N D

J-8

WW-9D

WW-9E

WW-9B

WW-9A

WW-9C

B

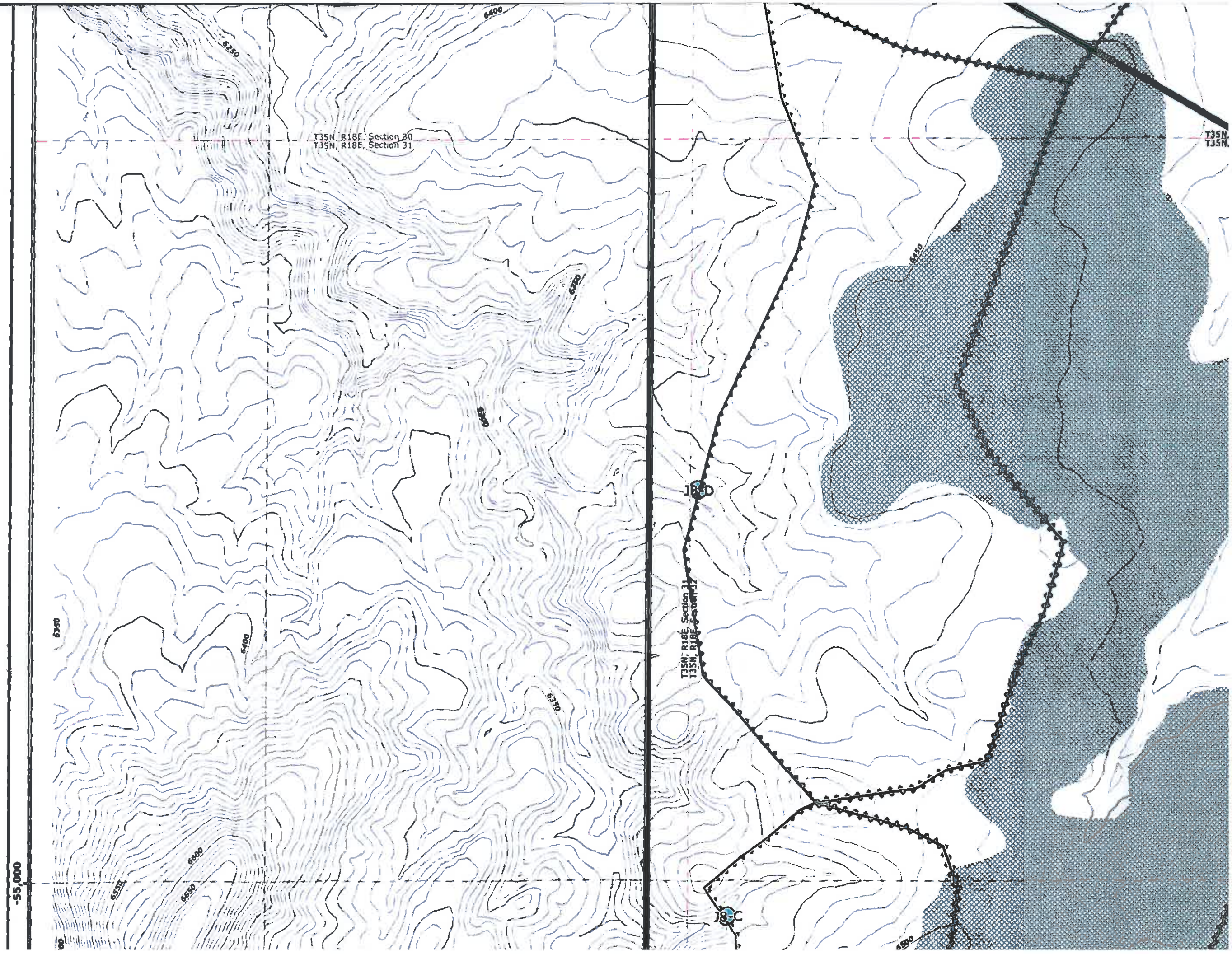
A

C

6500

6450

6450



T35N, R18E, Section 30
T35N, R18E, Section 31

T35N,
T35N

JB D

T35N, R18E, Section 31
T35N, R18E, Section 32

JB C

-55,000

ENGINEER'S CERTIFICATION

Date JAN 04 2008

James G. Gienovog
Professional Engineer
License No. 18782
State of Montana, U.S.A.

Engineering and Surveying
Peabody West

MAP REVISIONS

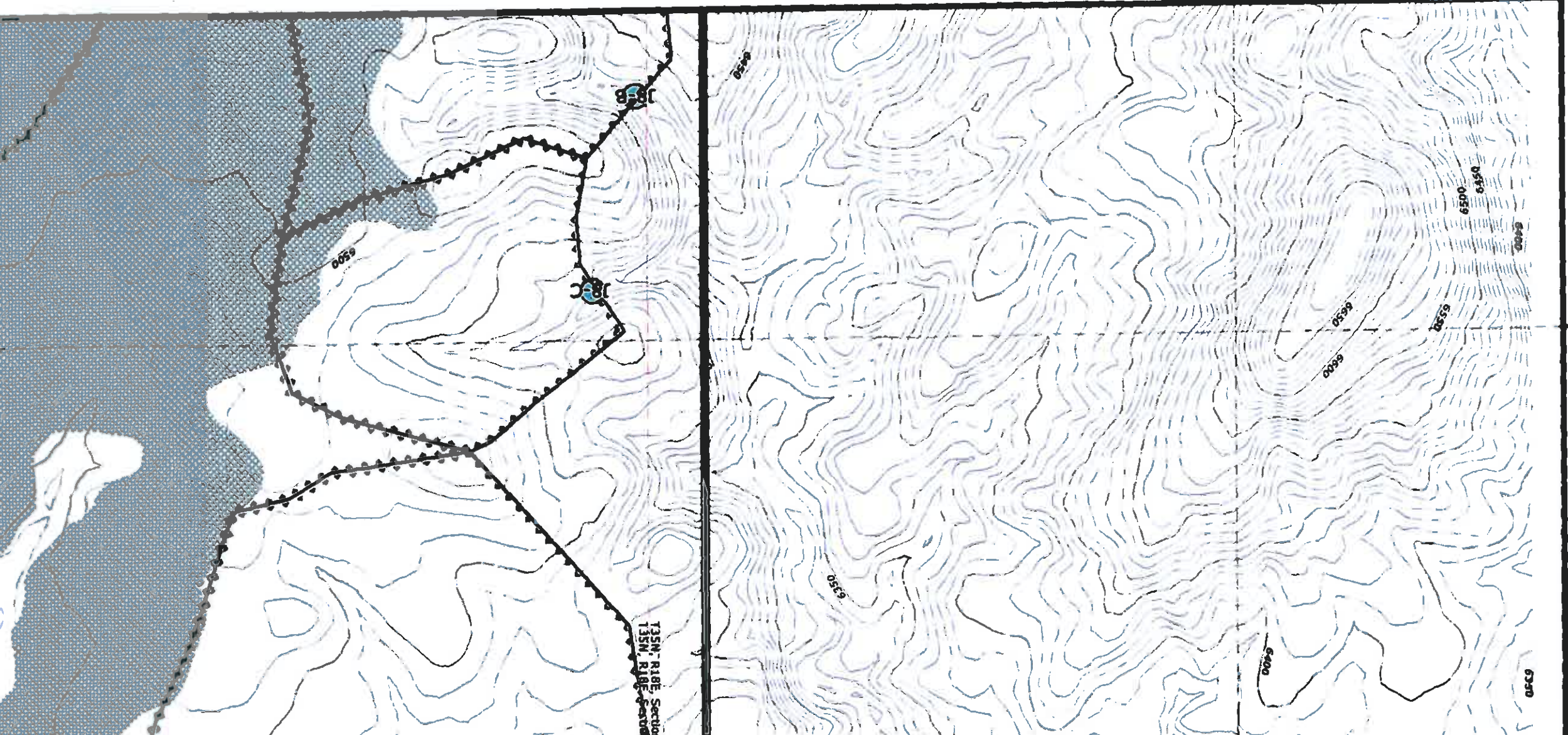
CHK'D	DATE	DESCRIPTION
JGS	Aug 15, 2004	OSM Response
JGS	Jan 14, 2005	N09 5 Year Mineplan Rev
JGS	Jun 15, 2005	N09 Facilities Revision
JGS	Sep 30, 2005	N09 & N08 Facilities Revision
JGS	Dec 15, 2005	N09 Sequence Revision
JGS	Jun 20, 2006	OSM Response
JGS	Feb 4, 2006	N08 Road As-Built Response
JGS	Feb 24, 2006	N09 Facilities Revision
GW	Apr 12, 2006	TCPe and Roads Revision
JGS	May 9, 2006	N09 Road As-Built
JGS	Jul 12, 2006	Airport Rd / WWS Wetlands Revision
JGS	Aug 30, 2006	Road Alignment Revision
JGS	Nov 6, 2007	Survey Upgrade / Mine-site feature update

85400 NOTES:

1. SEE DRAWING NO. 85360 FOR THE MINING AFFECTED LANDS.
2. SEE DRAWING NO. 85405 FOR THE GENERAL LOCATION OF THESE STRUCTURES.
3. SEE DRAWING NO. 85460-85490 FOR THE MINE SUPPORT FACILITIES MAP.
4. SEE DRAWING NO. 93500 FOR THE LOCATION OF THE ENVIRONMENTAL MONITORING SITES.
5. SEE CHAPTERS 6-7 AND 20-26 FOR INFORMATION ON THE FACILITIES AND RECLAMATION PLAN.

"DRAINAGE DIRECTION ON FILL EMBANKMENTS ONLY APPLY WHEN MSHA SAFETY BERM EXISTS."

"PRIMARY ROADS HAVE BEEN CONSTRUCTED OR RECONSTRUCTED AS DESIGNED AND IN ACCORDANCE WITH THE APPROVED PLAN."

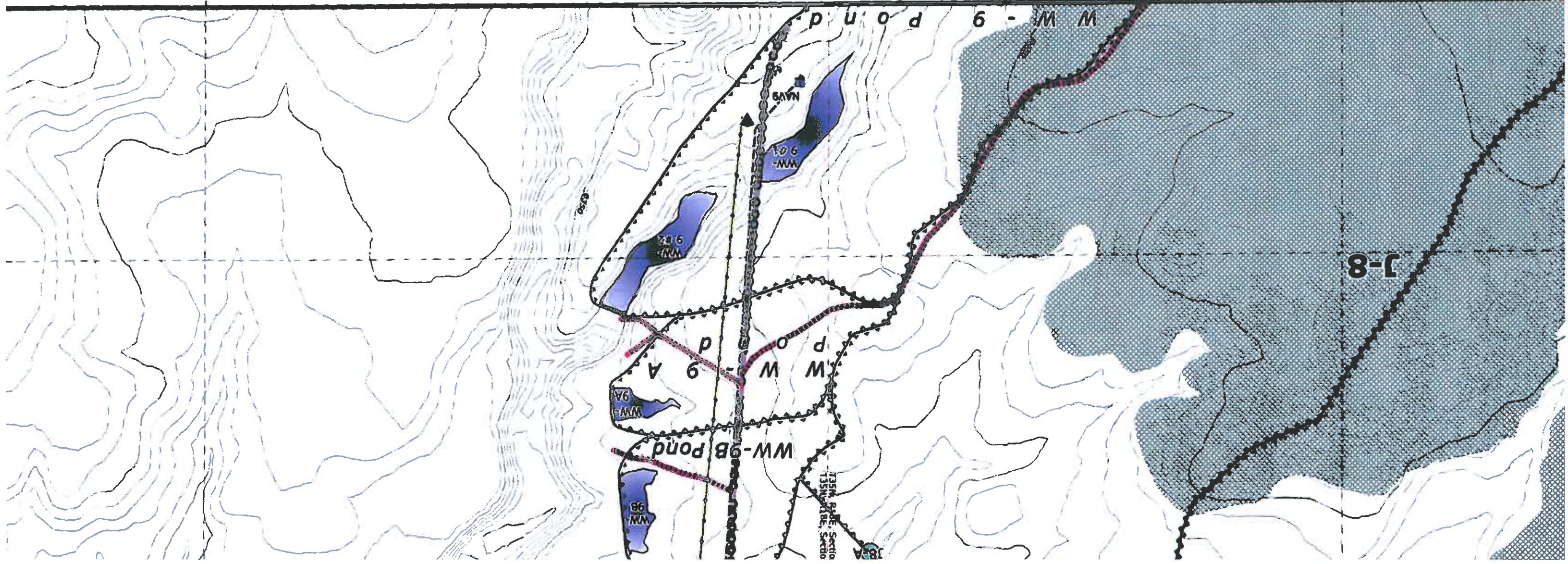


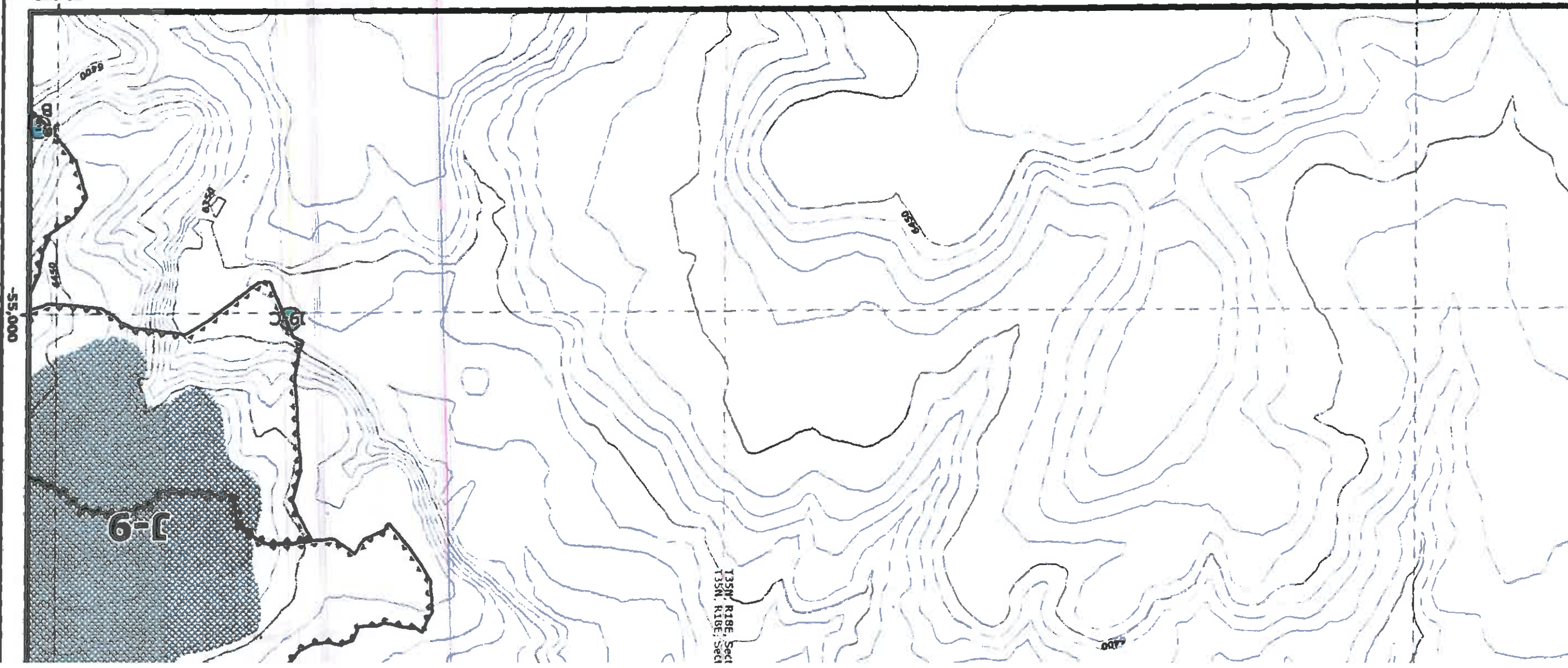


20,000

Water Impoundment Features		Culvert Features		Mine Area Facilities and Structures		Administrative Boundaries	
	Existing		Proposed		PWCC Powerline		PWCC Lease Line
	Reclaimed		Culvert Watershed Boundary		Non-PWCC Powerline		01 Permit Line
	Impoundment/SAE Watershed Boundary		Highwall (7/6/1990)		Coal Stockpile		Pre-Law Areas
	PWCC Buildings and Structures		Mined-Out Areas		Explosives Storage Facility		Navajo-Hopi Partition Line
	Non-PWCC Buildings / Residences		Future Mining Areas		PWCC Buildings and Structures		PWCC Permit Line
Drainages and Diversions		Other Water Features		Transport		Non-Mining	
	Major Drainage		PWCC Water Line		PWCC Permit 01		Non-Mining
	Road Drainage Direction		Navajo Water Well		SRP		Non-Mining
	Diversions		Sewage Facility / Lagoon		PWCC Permit 01		Non-Mining

25,000



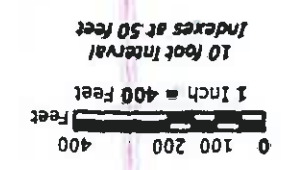


Drainage Area and Facilities Map

Sheet K11

Drawing #85400

Produced by PWCC GIS
 Nov 19, 2007



10 foot Interval
 Indexes at 50 Feet

PEABODY WESTERN
 Black Mesa Complex
 PO Box 650
 Kayenta, Arizona 86033

BGA Features		Transport Features		Other Water Features		Boundaries		Miscellaneous	
▲	SPPC Point Feature	~	PWCC Conveyor	~	PWCC Water Line	~	1D Permit Line	~	Pre-Law Areas
✱	Revegetated Areas	—	SRP/NGS Railroad	☐	Navajo Water Well	☒	Pi Partition Line	☒	Sewage Facility / Lagoon
✱	Straw Bales	—	PWCC Permit 01	☒	Navajo Water Well	☒	Pi Partition Line	☒	Sewage Facility / Lagoon
✱	Silt Fence	—	PWCC Permit 1D	☒	Navajo Water Well	☒	Pi Partition Line	☒	Sewage Facility / Lagoon
✱	Rock Checkdam	—	Primary Road	☒	Navajo Water Well	☒	Pi Partition Line	☒	Sewage Facility / Lagoon
✱	Riprap Rock	—	Pit Ramp	☒	Navajo Water Well	☒	Pi Partition Line	☒	Sewage Facility / Lagoon
✱	SPCC Point Feature	—	Ancillary Road	☒	Navajo Water Well	☒	Pi Partition Line	☒	Sewage Facility / Lagoon
		—	Non-Mining Related Road	☒	Navajo Water Well	☒	Pi Partition Line	☒	Sewage Facility / Lagoon
		—	Non-Mining Highway	☒	Navajo Water Well	☒	Pi Partition Line	☒	Sewage Facility / Lagoon