

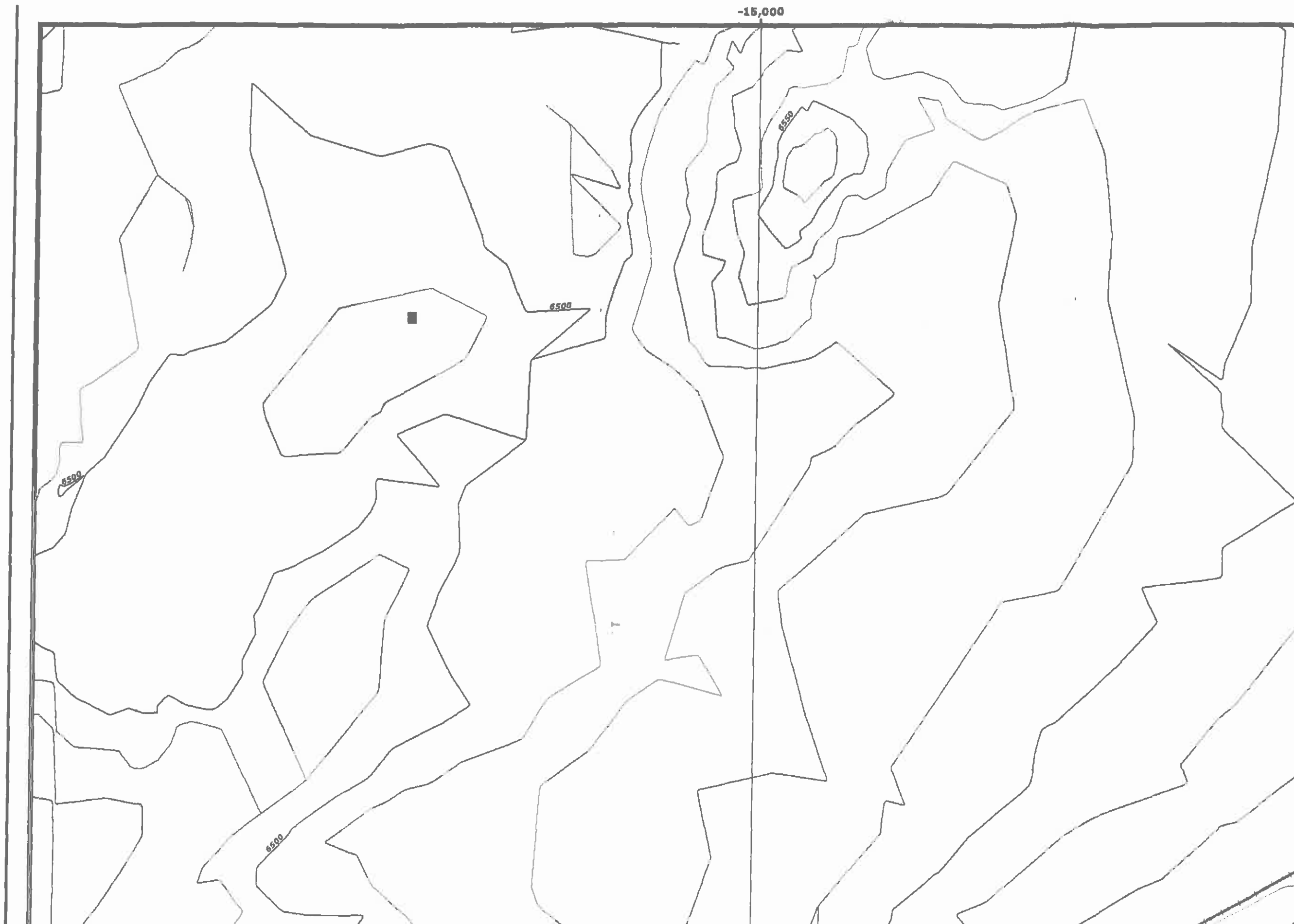
-10,000

BMLP
RAILROAD

US Highway 160

6500

6650





s h e d

Watershed

Navajo Route 41

SAE TI Watershed

Santo Wash Drainage

6700

6750

6750

6800

7000

7050

6850

7050



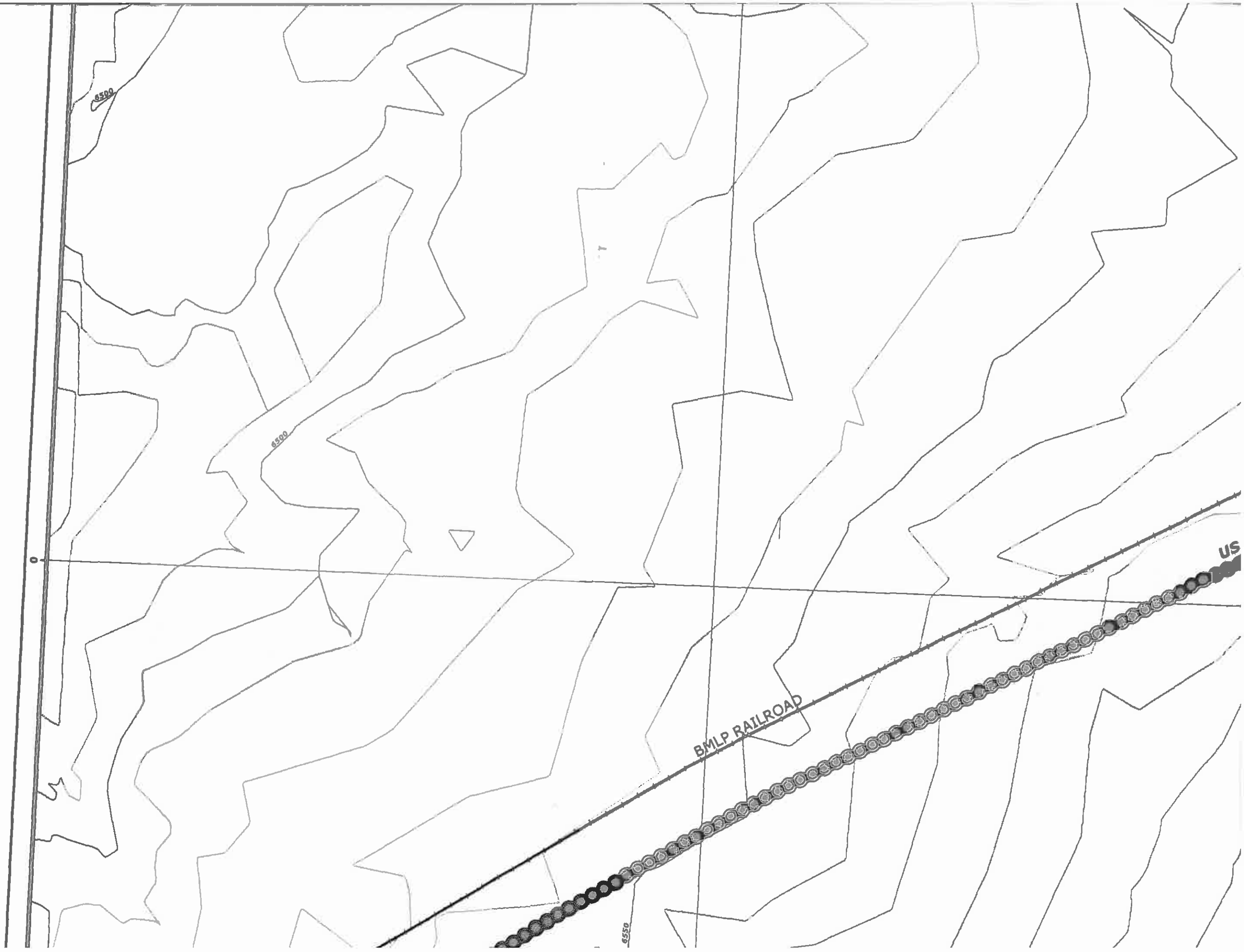
US Highway 160

6500

6550

6720

6820



6500

6500

BMLP RAILROAD

US

6550



Kletha Valley / Shonto Wash Drainage
Yellow Water Canyon Wash Drainage

6850

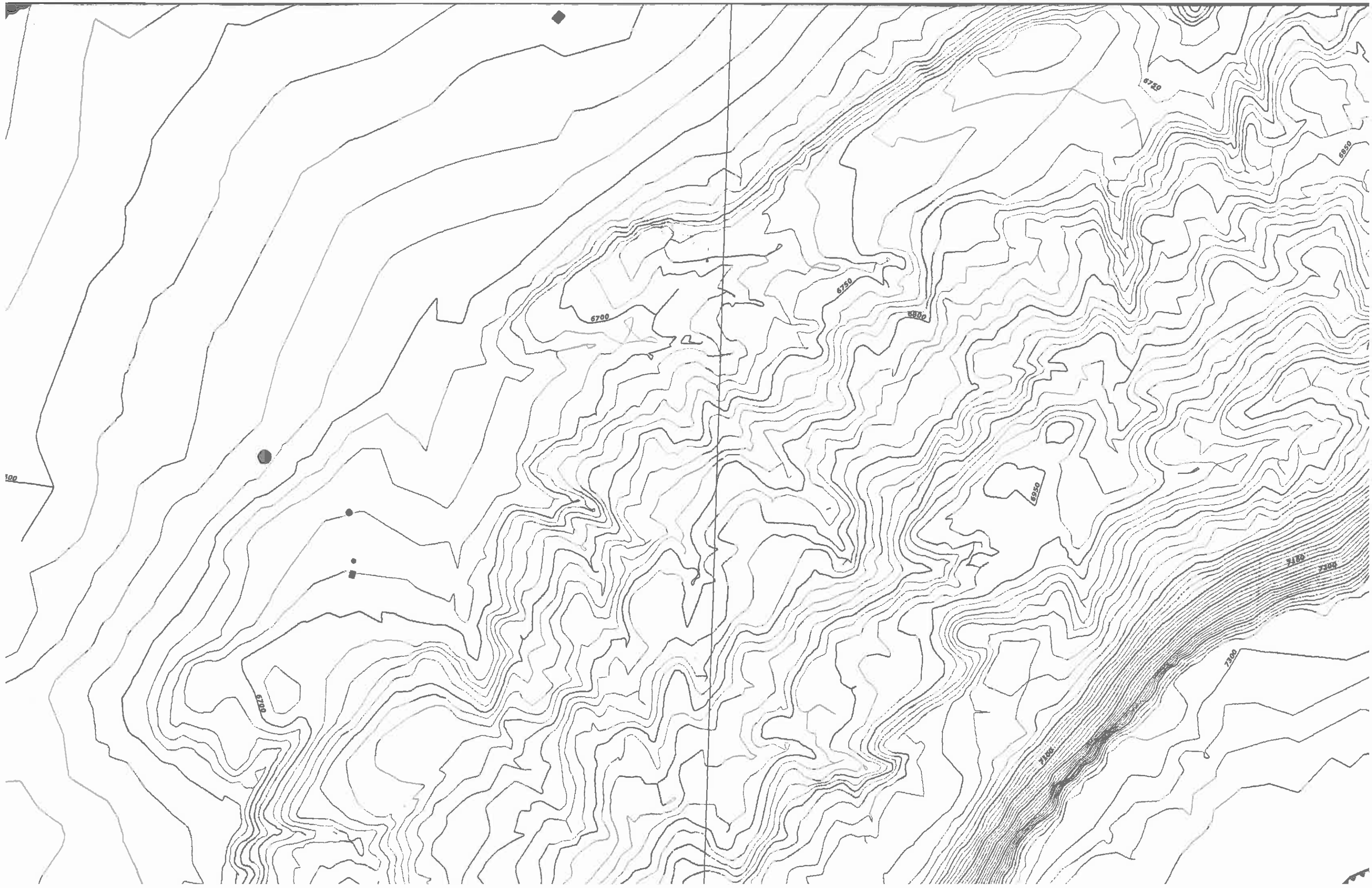
6950

7000

7050

7300







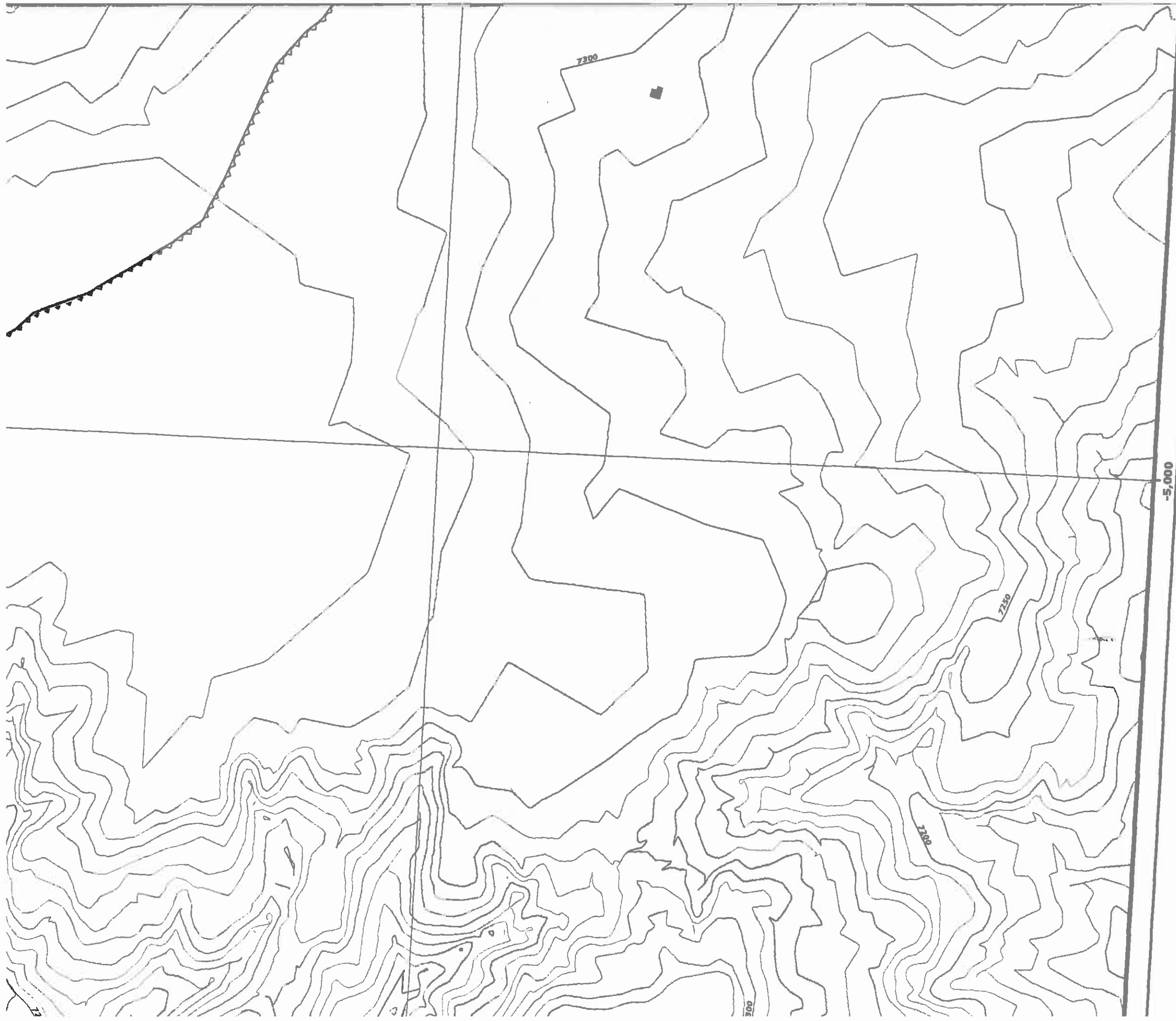
BMLP RAILROAD

To Tuba City

6500

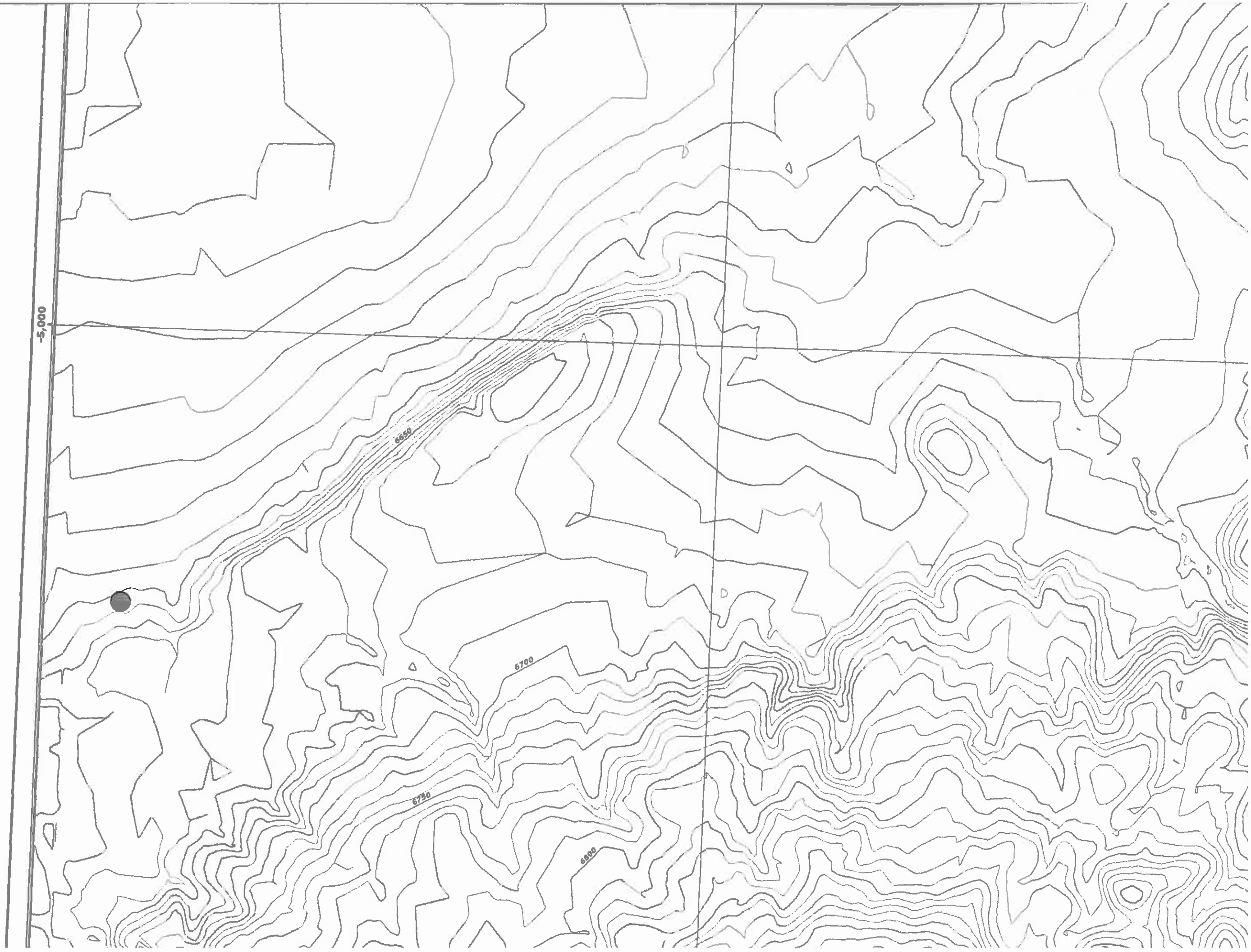
6550

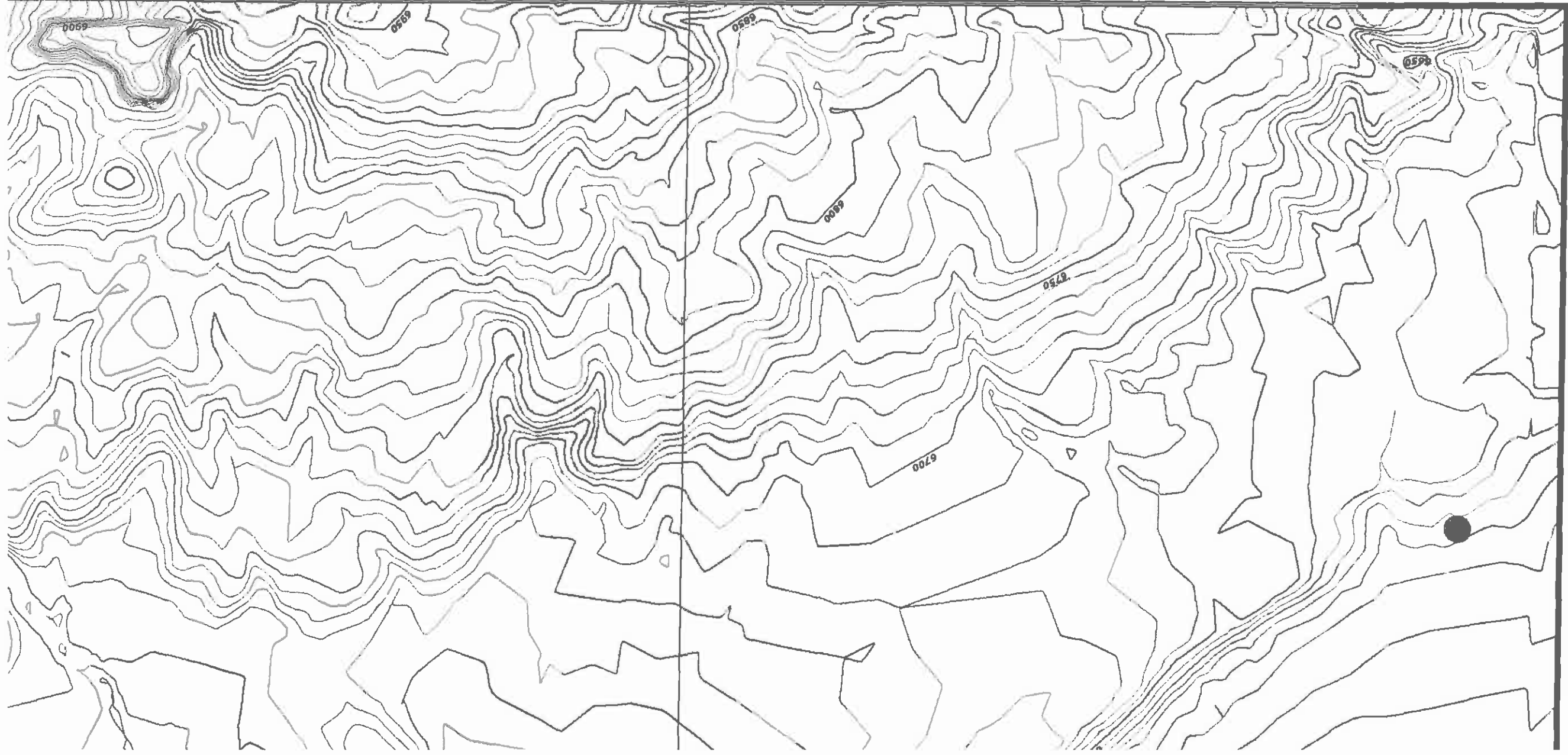
6600



-5,000



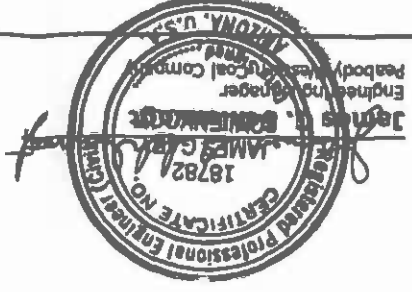




-15,000

ENGINEER'S CERTIFICATION

JAN 04 2008
Date



CHK'D	DATE	DESCRIPTION
JGS	Aug 15, 2004	OSH Response
JGS	Jan 14, 2005	N09 8 Year Mineplan Rev
JGS	Jun 15, 2005	N09 Facilities Revision
JGS	Sep 30, 2005	N09 & N06 Facilities Revision
JGS	Dec 15, 2005	N09 Sequence Revision
JGS	Jan 20, 2006	OSH Response
JGS	Feb 4, 2006	N06 Road As-Built Response
JGS	Feb 24, 2006	N09 Facilities Revision
GW	Apr 12, 2006	TCPs and Roads Revision
JGS	May 9, 2006	N09 Road As-Built
JGS	Jul 12, 2006	Airport Rd / WVE Waterline Revision
JGS	Aug 30, 2006	Road Alignment Revision
JGS	Dec 23, 2007	Between Upgrade / Mine-Plan Update

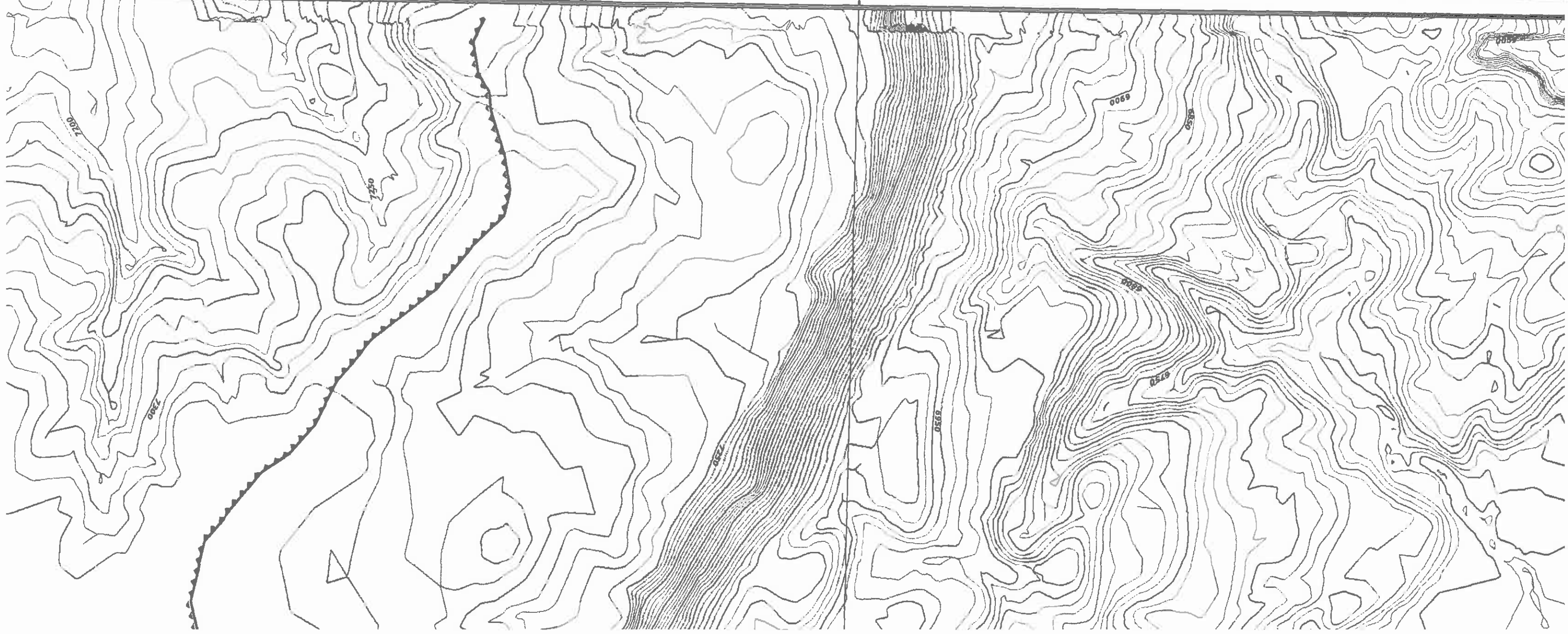
MAP REVISIONS

- 85400 NOTES:
1. SEE DRAWING NO. 85360 FOR THE MINING AFFECTED LANDS.
 2. SEE DRAWING NO. 85405 FOR THE GENERAL LOCATION OF THESE STRUCTURES.
 3. SEE DRAWING NO. 85460-85490 FOR THE MINE SUPPORT FACILITIES MAP.
 4. SEE DRAWING NO. 93500 FOR THE LOCATION OF THE ENVIRONMENTAL MONITORING SITES.
 5. SEE CHAPTERS 6-7 AND 20-26 FOR INFORMATION ON THE FACILITIES AND RECLAMATION PLAN.
- DRAINAGE DIRECTION ON FILL EMBANKMENTS ONLY APPLY WHEN MSHA SAFETY BERM EXISTS.
- "PRIMARY ROADS HAVE BEEN CONSTRUCTED OR RECONSTRUCTED AS DESIGNED AND IN ACCORDANCE WITH THE APPROVED PLAN."



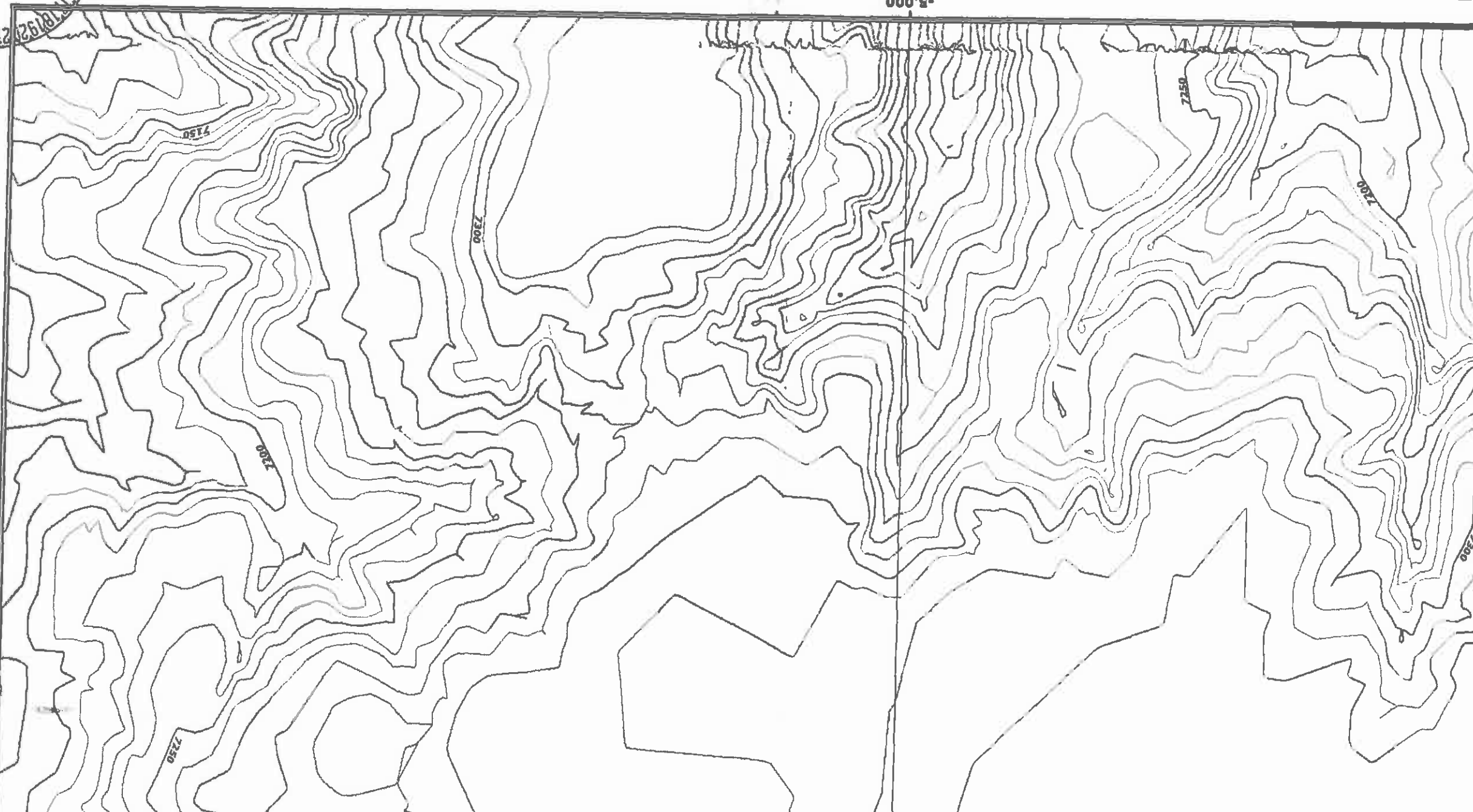


-10,000



PWCC Buildings and Structures	Non-PWCC Buildings / Residences
Coal Stockpile	Explosives Storage Facility
Scoria Pit	Non-PWCC Powerline
PWCC Powerline	
Mine Area Facilities and Structures	
Impoundment/SAE Watershed Boundary	
Existing Reclaimed	
Proposed Reclaimed	
Water Impoundment Features	
Existing	
Proposed	
Reclaimed	
Culvert Features	
Existing	
Proposed	
Culvert Watershed Boundary	
Drainages and Diversions	
Major Drainage	
Road Drainage Direction	
Diversions	
Mining Status Data	
Future Mining Areas	
Mined-Out Areas	
Highwall (7/6/1990)	
Administrative Boundaries	
01 Permit Line	
1D Permit Line	
PWCC Lease Line	
Pre-Law Areas	
Navajo-Hopi Partition Line	
Other Water Features	
PWCC Water Line	
Navajo Water Well	
Sewage Facility / Lagoon	

Non-PWCC Permit
PWCC Permit
Non-PWCC
Non-PWCC



Drainage Area and Facilities Map
Drawing #85400
Sheet H7

Produced by PWCC GIS
 Jan 09, 2008

1 Inch = 400 Feet
 10 foot interval
 Indexes at 50 Feet

PEABODY WESTERN
 Black Mesa Complex
 PO Box 650
 Kayenta, Arizona 86033

BICA Features

- Riprap Rock
- Rock Checkdam
- Silt Fence
- Straw Bales
- Revegetated Areas
- ▲ SPCC Point Feature

Transport Features

- ~ PWCC Conveyor
- + SRP/NGS Railroad
- PWCC Permit 01
- PWCC Permit 10
- Primary Road
- Pit Ramp
- Ancillary Road
- Non-Mining Related Road
- Non-Mining Highway

