



85400 NOTES:

1. SEE DRAWING NO. 85360 FOR THE MINING AFFECTED LANDS.
2. SEE DRAWING NO. 85405 FOR THE GENERAL LOCATION OF THESE STRUCTURES.
3. SEE DRAWING NO. 85460-85490 FOR THE MINE SUPPORT FACILITIES MAP.
4. SEE DRAWING NO. 93500 FOR THE LOCATION OF THE ENVIRONMENTAL MONITORING SITES.
5. SEE CHAPTERS 6-7 AND 20-26 FOR INFORMATION ON THE FACILITIES AND RECLAMATION PLAN.

"DRAINAGE DIRECTION ON FILL EMBANKMENTS ONLY APPLY WHEN MSHA SAFETY BERM EXISTS."

"PRIMARY ROADS HAVE BEEN CONSTRUCTED OR RECONSTRUCTED AS DESIGNED AND IN ACCORDANCE WITH THE APPROVED PLAN."

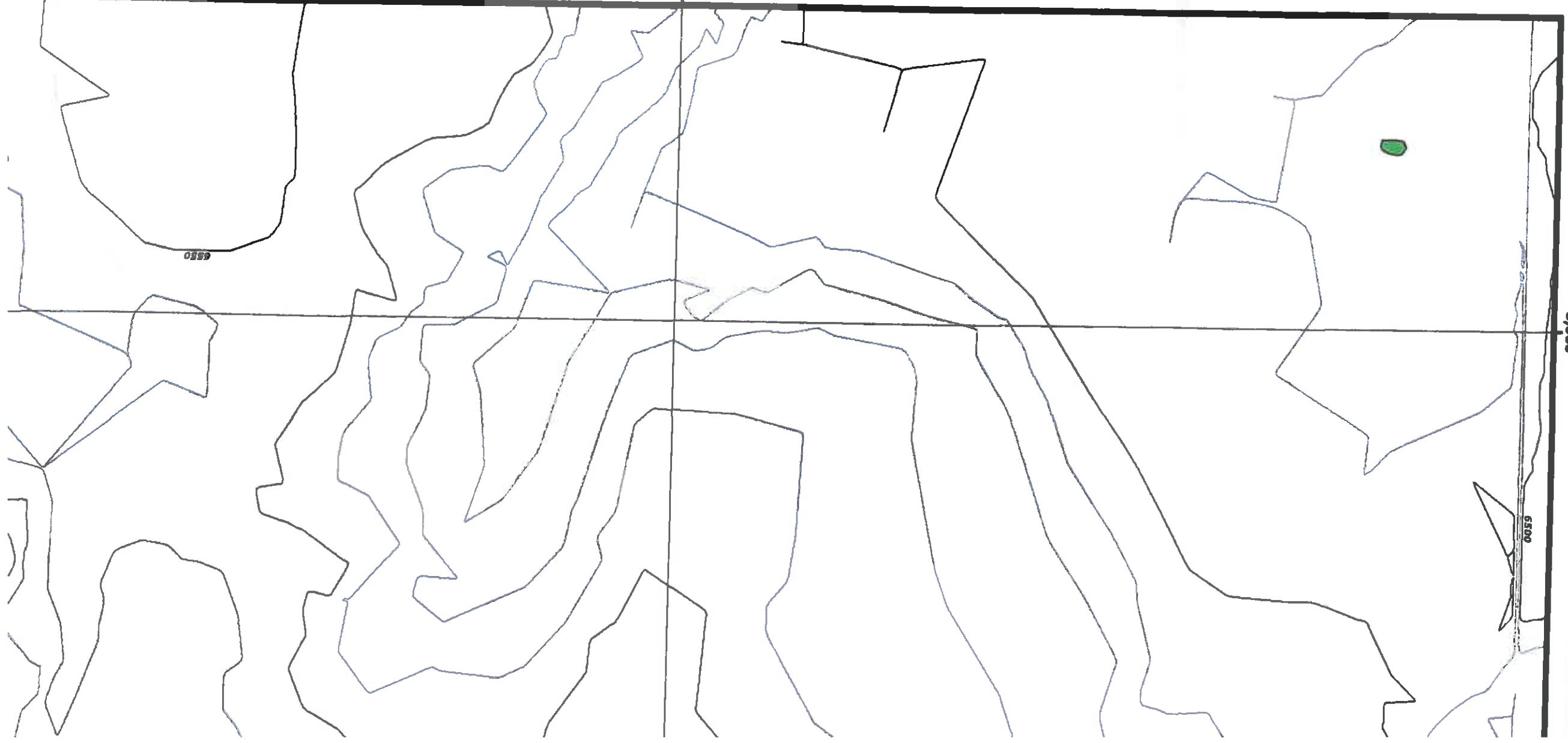
MAP REVISIONS

CHK'D	DATE	DESCRIPTION
JGS	Aug 13, 2004	OSM Response
JGS	Jan 14, 2005	NO5 5 Year Mineplan Rev
JGS	Jan 15, 2005	NO5 Facilities Revision
JGS	Sep 30, 2005	NO5 & NO6 Facilities Revision
JGS	Dec 15, 2005	NO5 Sequence Revision
JGS	Jan 20, 2006	OSM Response
JGS	Feb 4, 2006	NO6 Road As-Built Response
JGS	Feb 24, 2006	NO5 Facilities Revision
GW	Apr 12, 2006	TCPs and Roads Revision
JGS	May 9, 2006	NO5 Road As-Built
JGS	Jul 12, 2006	Asphalt Rd / WWS Waterline Revision
JGS	Aug 30, 2006	Road Alignment Revision
JGS	Dec 21, 2007	Outcrop Upgrade / Mine-wide future updates

ENGINEER'S CERTIFICATION

Date: **JAN 04 2008**

James Gary Schmitt
Professional Engineer
State of North Carolina
License No. 18782



-15,000



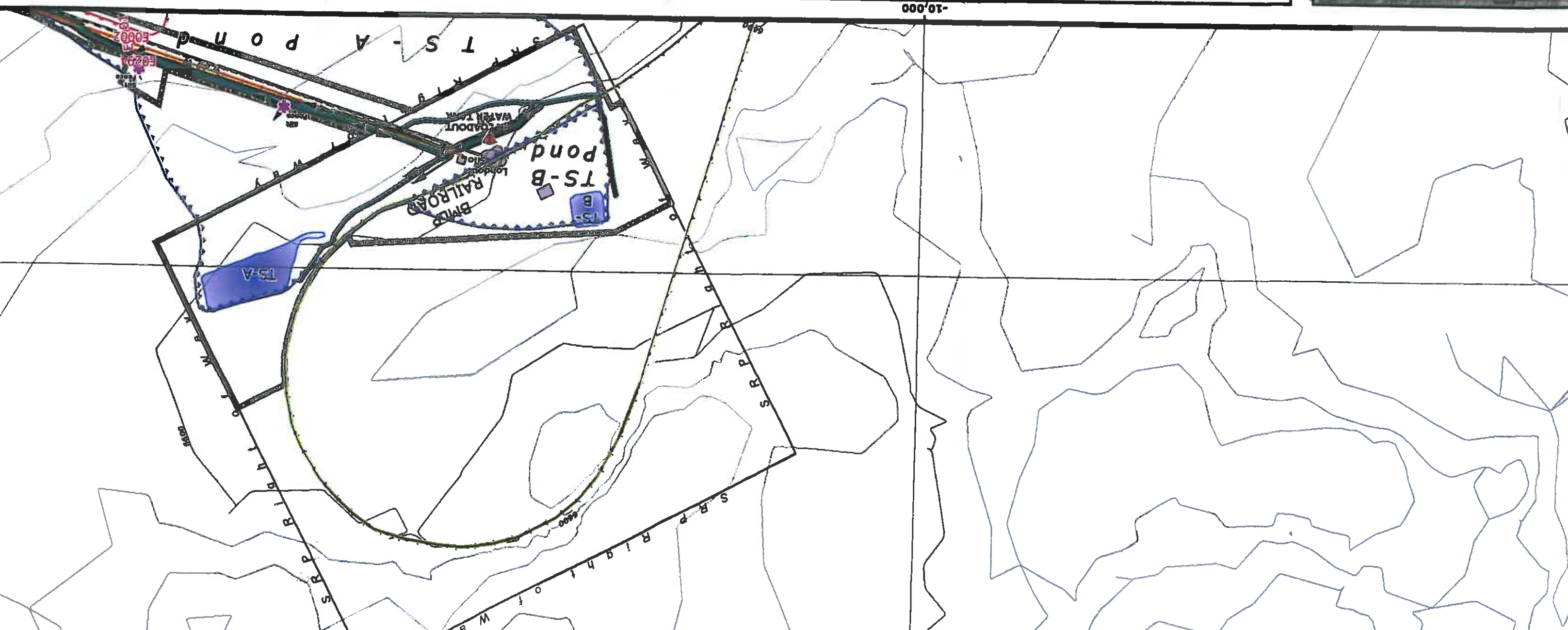
- Water Impoundment Features**
- Existing (Blue fill)
 - Proposed (Light Blue fill)
 - Reclaimed (Dark Blue fill)
 - Impoundment/SAE Watershed Boundary (Blue outline)
- Mine Area Facilities and Structures**
- PWCC Buildings and Structures (Purple square)
 - Coal Stockpile (Black and white hatched)
 - Scoria Pit (Black and white hatched)
 - PWCC Powerline (Orange zigzag)
 - Non-PWCC Powerline (Yellow zigzag)
 - Explosives Storage Facility (Black and white hatched)
 - Non-PWCC Buildings / Structures (Green square)

- Culvert Features**
- Existing (Red line)
 - Proposed (Pink line)
 - Culvert Watershed Boundary (Pink outline)
- Drainages and Diversions**
- Major Drainage (Blue wavy line)
 - Road Drainage Direction (Black arrow)
 - Diversions (Blue line)

- Other Water Features**
- PWCC Water Line (Black wavy line)
 - Navajo Water Well (Black square)
 - Sewage Facility / Lagoon (Black and white hatched)
- Administrative Boundaries**
- 01 Permit Line (Black outline)
 - ID Permit Line (Dashed black outline)
 - PWCC Lease Line (Pink outline)
 - Pre-Law Areas (Pink hatched)
 - Navajo-Hopi Partition Line (Red line)
- Mining Status Data**
- Future Mining Areas (Black and white hatched)
 - Mined-Out Areas (Black and white hatched)
 - Highwall (7/6/1990) (Black arrow)

- Transport Features**
- PWCC Co (Black wavy line)
 - SRP/NGS (Black arrow)
 - PWCC (Black wavy line)
 - Permit 01 (Black wavy line)
 - Permit 11 (Black wavy line)
- Non-Mining Related**
- Non-Mining High (Black wavy line)

-10,000



Drainage Area and Facilities Map

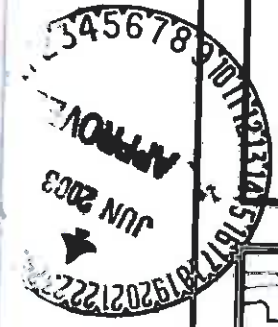
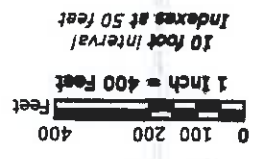
Drawing #85400

Sheet H6

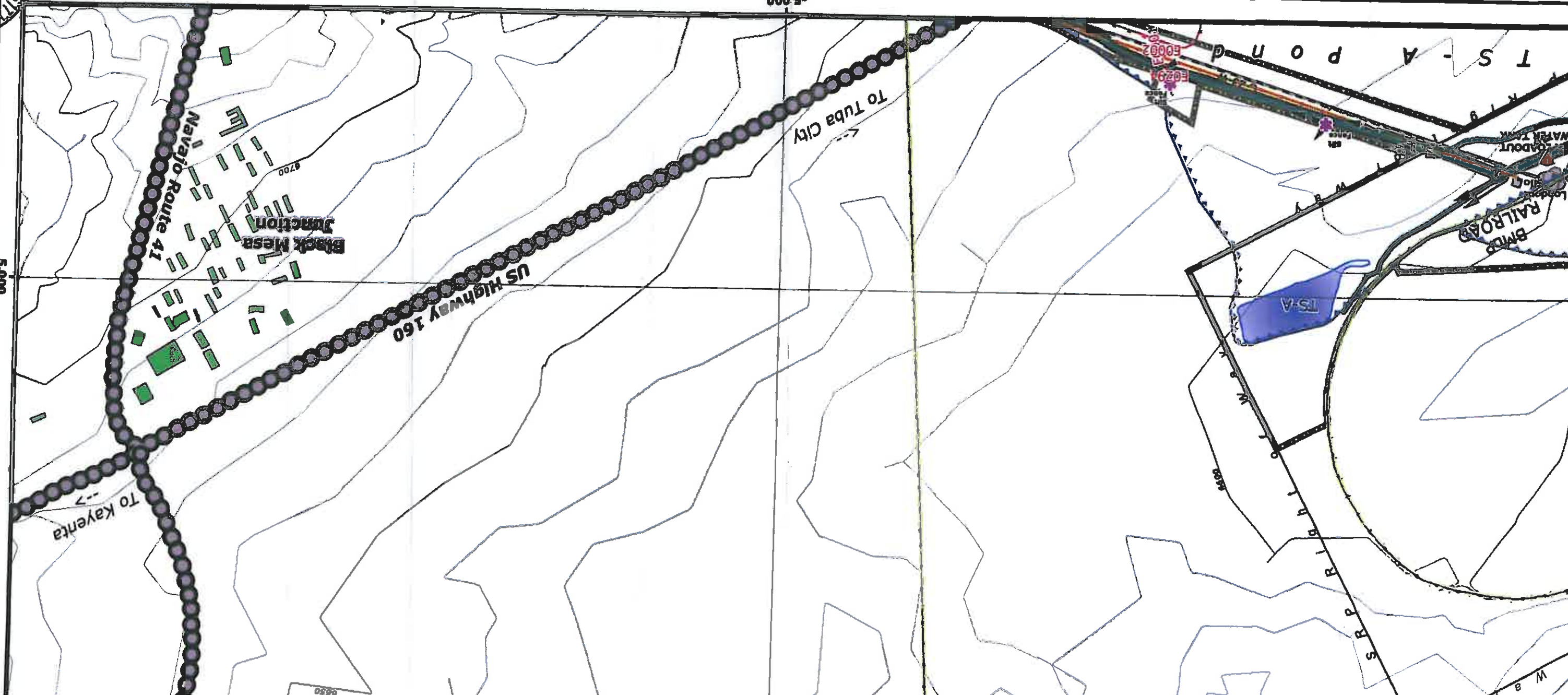
Produced by PWCC GIS
 Jan 09, 2008



Black Mesa Complex
 PO Box 650
 Kayenta, Arizona 86033



Other Water Features	PWCC Water Line	Navajo Water Well	Sewage Facility / Lagoon
Diversions	Drainage Direction		
Administrative Boundaries	01 Permit Line	PWCC Lease Line	Navajo-Hopi Partition Line
Transport Features	PWCC Conveyor	SRP/NGS Railroad	PWCC Permit 01
BICA Features	Riprap Rock	Rock Checkdam	Silt Fence
	Straw Bales	Revegetated Areas	SPCC Point Feature
	Primary Road	Ancillary Road	Non-Mining Related Road
	PWCC Permit 10	Non-Mining Highway	



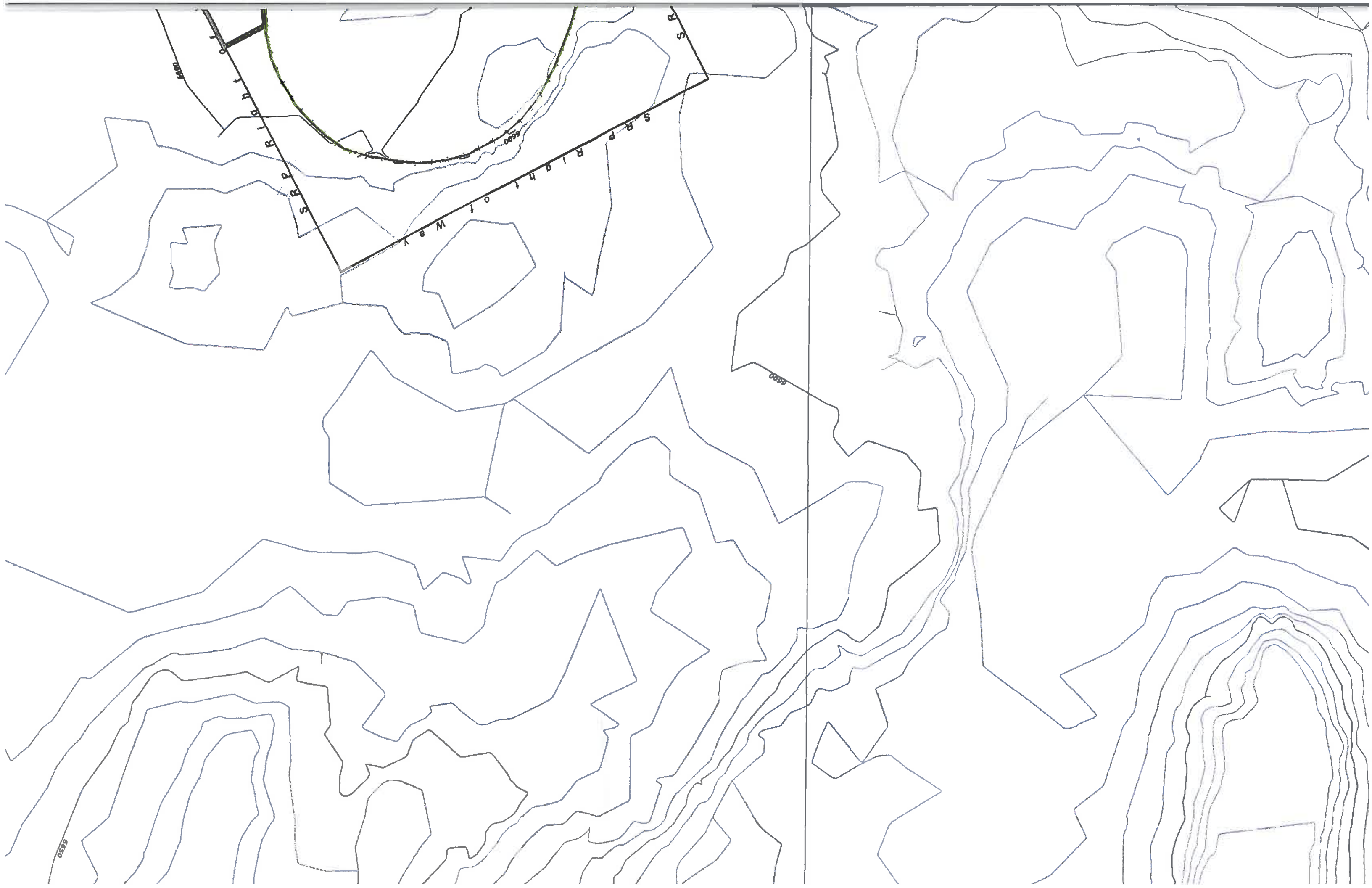


6500

6530

6500

6550



6600

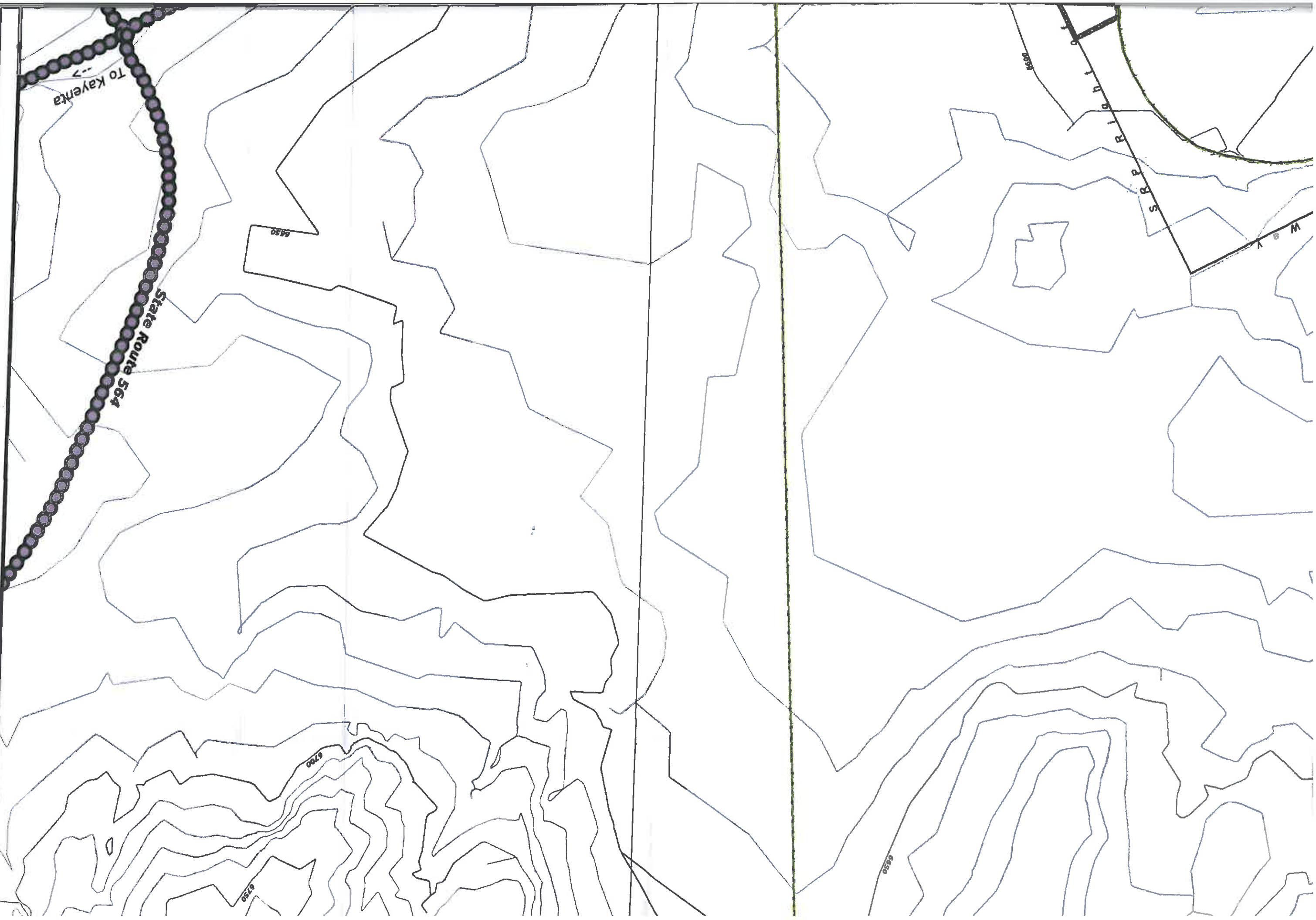
S R P R I G H T O F W A Y

6500

S R P

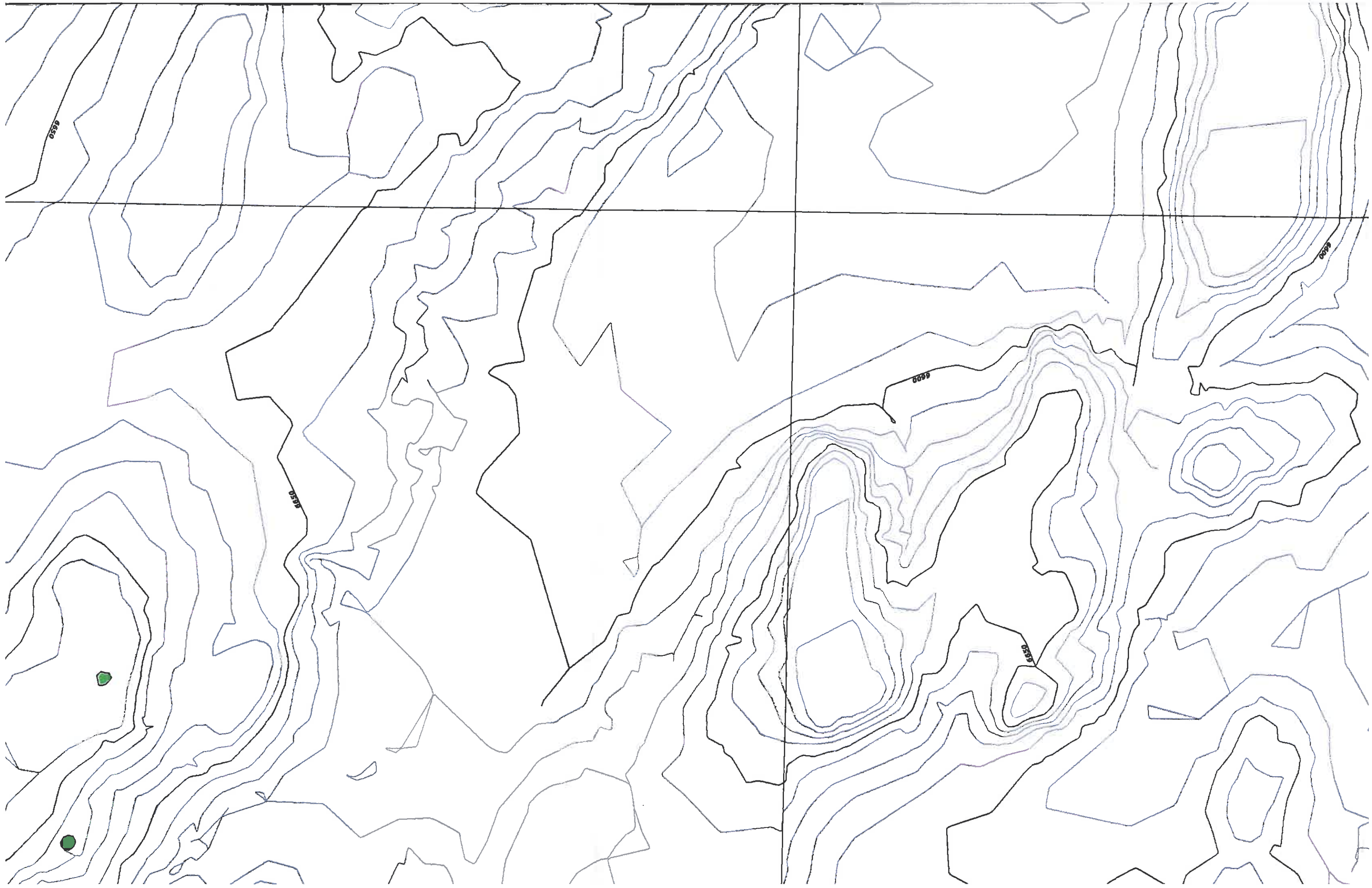
6600

6500

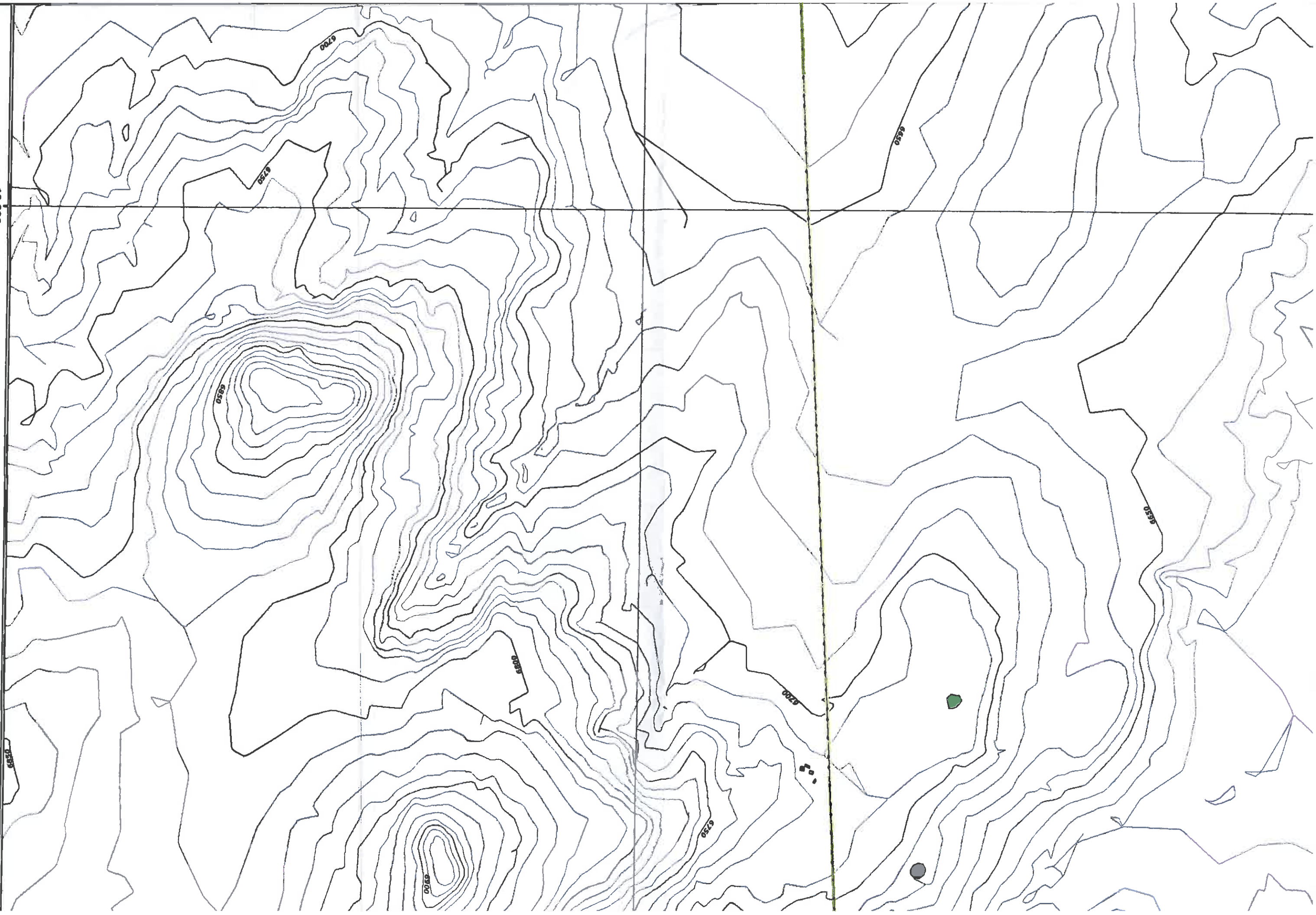


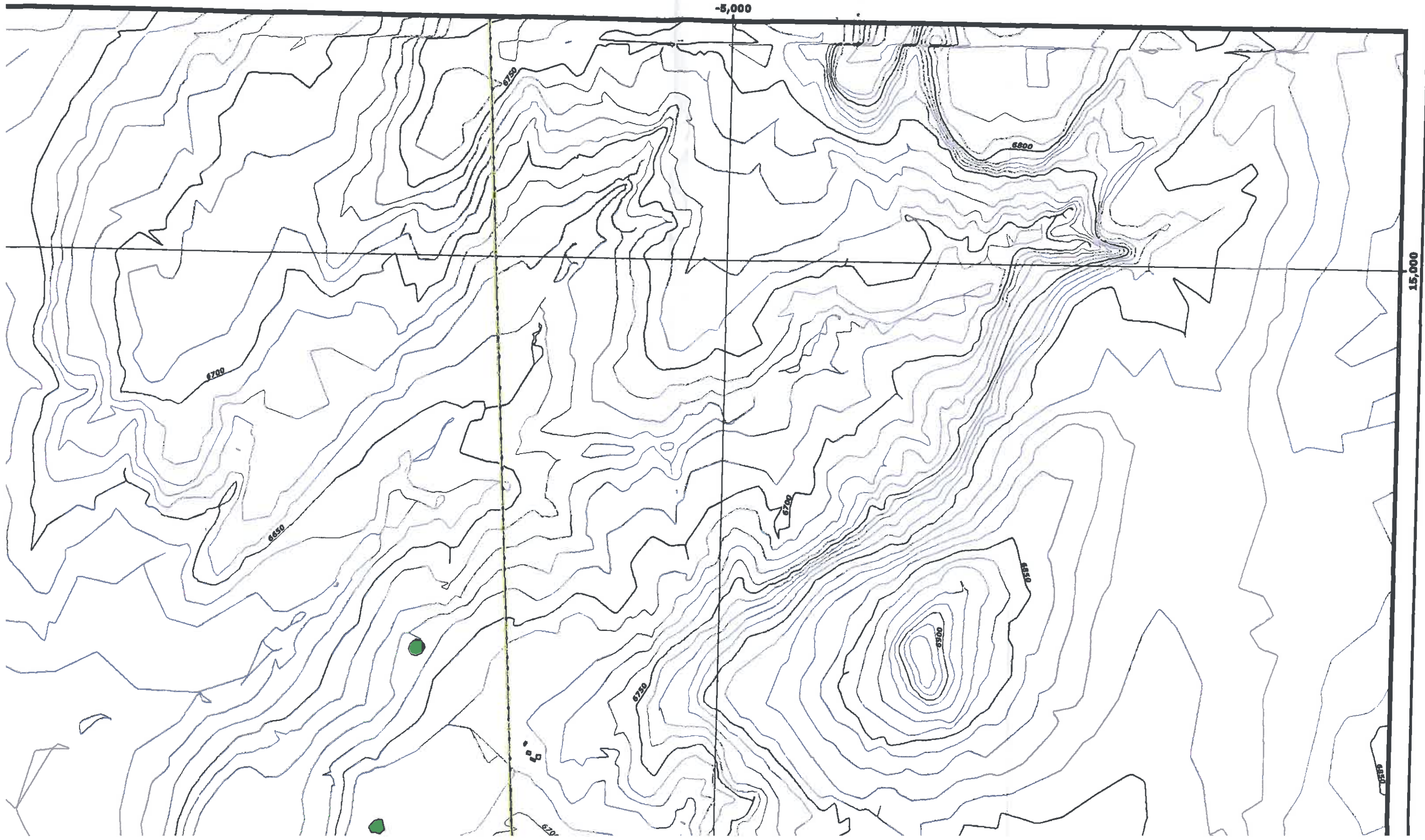


10,000



10,000





0

-10,000

