

SHEET INDEX

M-7	N-7
M-8	N-8
M-9	N-9
M-10	N-10
M-11	N-11

REVISIONS

CHK'D	DATE	DESCRIPTION
JGS	12/2/96	5 YR. MINE PLAN REV.
JGS	10/10/97	J-7 REV. & DSM RESPONSE
JGS	2/13/98	J-27 PERMIT REV.
JGS	2/13/98	J-21 PERMIT REV.
JGS	2/21/00	DSM PERMIT REV.
JGS	12/07/01	5-YR. MINE PLAN REV.
JGS	01/20/04	5 YR. MINE PLAN REV.
JGS	12/23/04	N-9 & 5 YR. MINE PLAN
JGS	12/15/05	N-9 & 5 YR. MINE PLAN
JGS	06/27/08	LDM MINE PLAN REV.

DRAWING# 85405  
 (Sheet 2 of 2)  
 SEDIMENT & WATER CONTROL  
 STRUCTURES MAP  
 KAYENTA AND BLACK MESA MINES  
 PEABODY WESTERN P.O. BOX 650 KAYENTA AZ, 86033  
 DESIGNED BY:PWCC SCALE:1"=2000'  
 DRAWN BY:PWCC DRAWING DATE:12-09-04  
 CHECKED BY:JGS PHOTO DATE:11-19-84  
 CONTOUR INTERVAL:40'

7

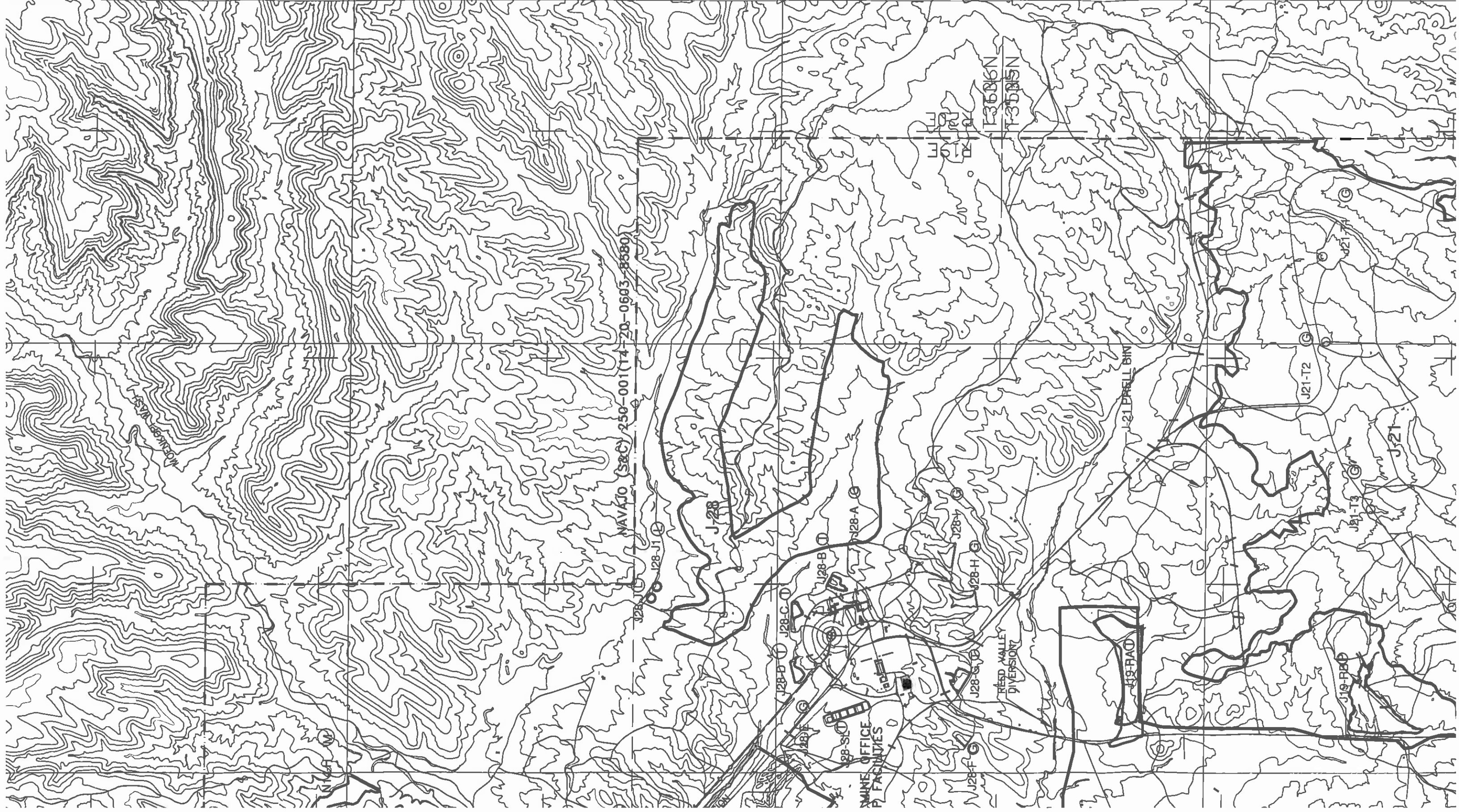
10000 S

8

20000 S

9

30000 S



NAVATO (S&C) 250-001 (14-20-0603-8580)

J28

J28-A

J28-B

J28-C

J28-D

J28-E

J28-F

J28-G

J28-H

RED VALLEY DIVERSION

J21 PAELL BIN

J21-T2

J19-RED

J21-T3

J21

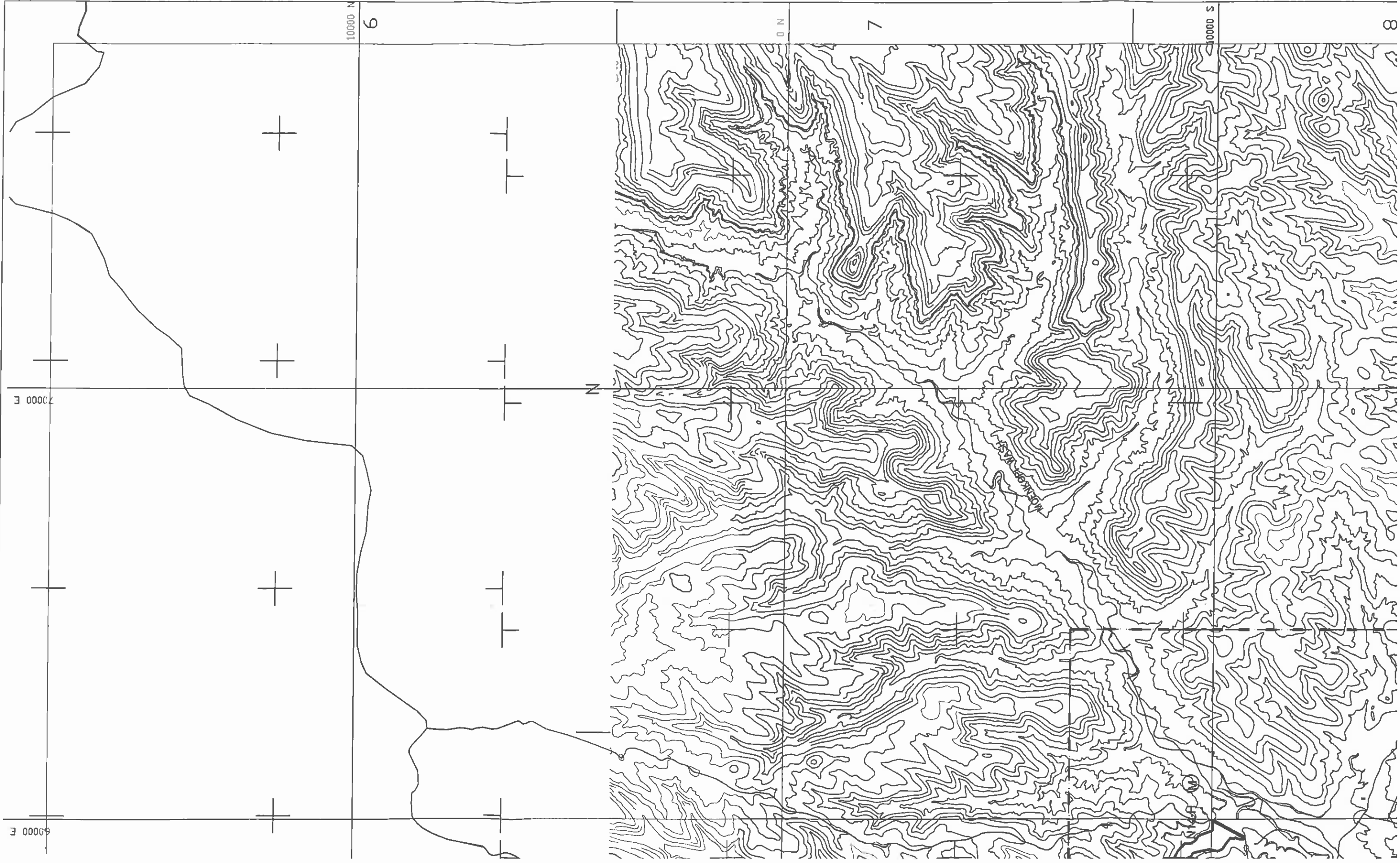
J21-T1

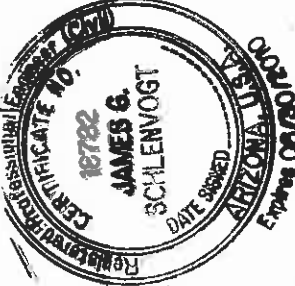
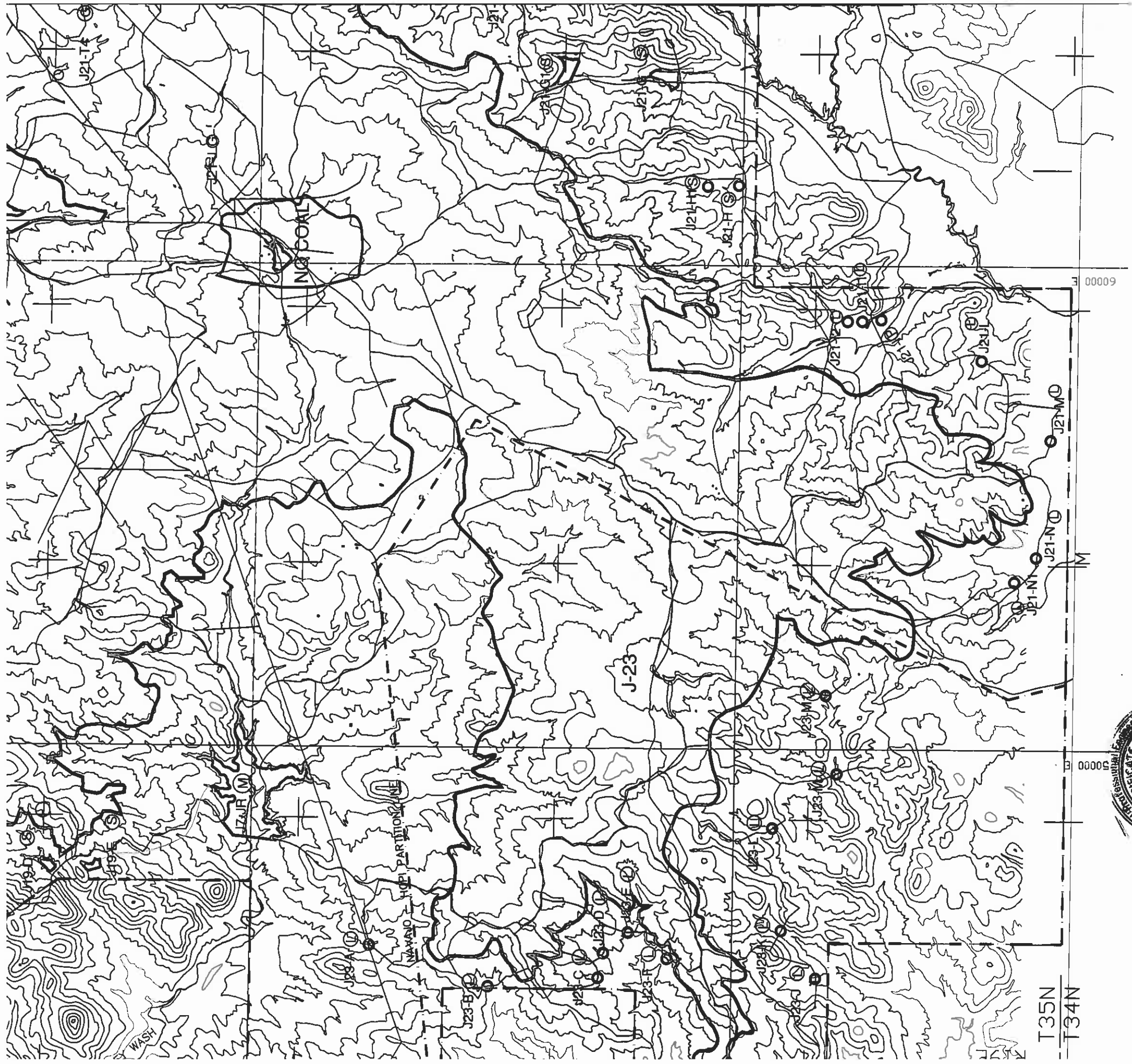
RAISE RISE

F3606N

F3605N

MOKING MOUNTAIN



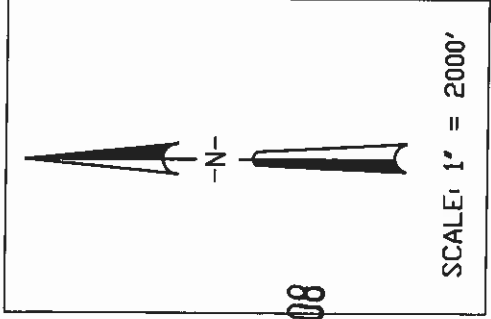


ENGINEER'S CERTIFICATION

me 1, Chapter 6,  
y Plan" and

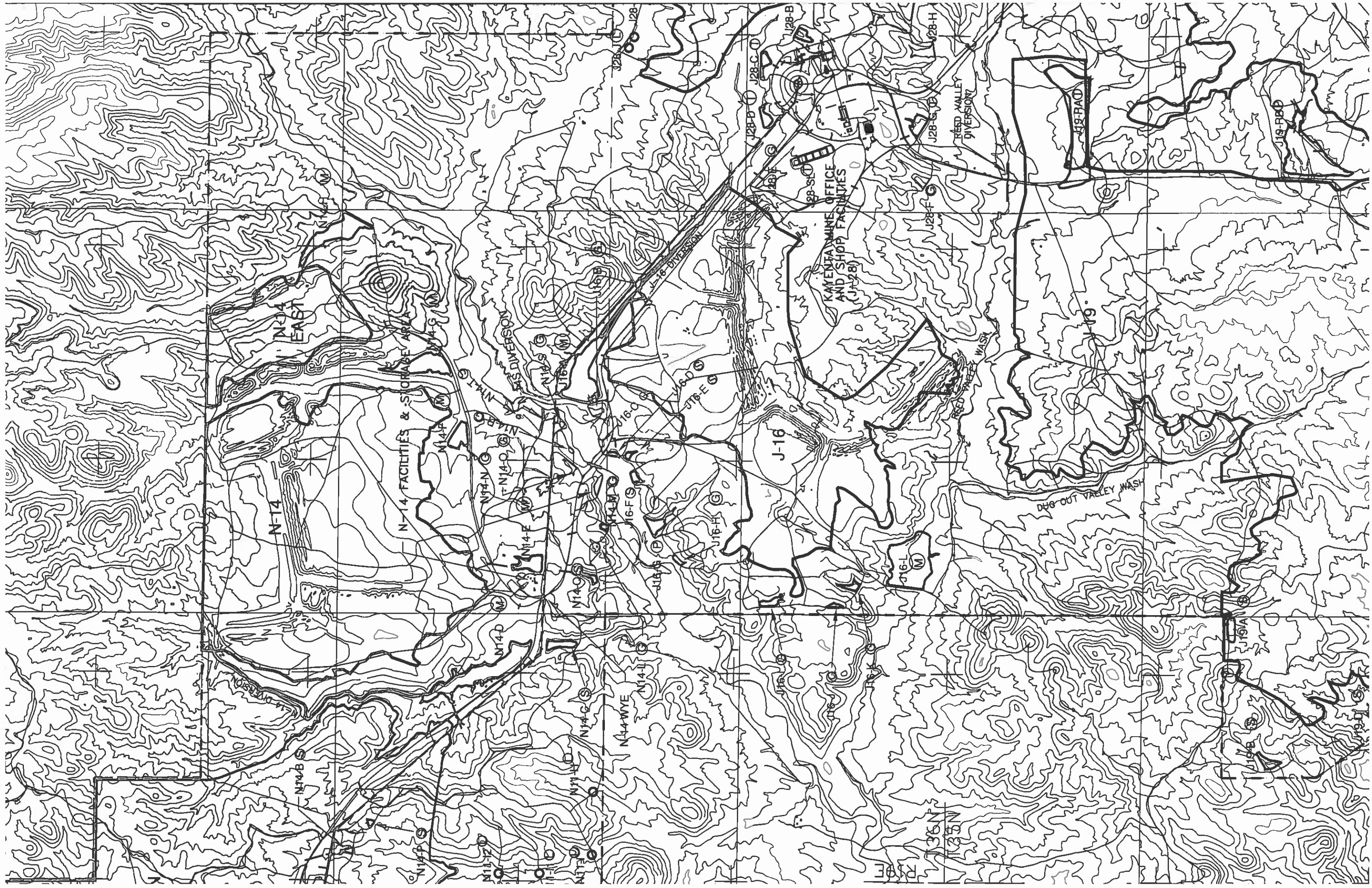
*James G. Schlenvogt*  
ENGINEER

**JUN 27 2008**  
DATE



SHEET INDEX	
K-6	L-6
K-7	L-7
K-8	L-8
K-9	L-9
K-10	L-10
K-11	L-11
M-7	N-7
M-8	N-8
M-9	N-9
M-10	N-10
M-11	N-11

CHK'D	DATE
JGS	12/2/96
JGS	10/10/97
JGS	2/13/98
JGS	2/13/98
JGS	2/21/00
JGS	12/07/01
JGS	01/20/04
JGS	12/23/04
JGS	12/15/05
JGS	06/27/08



N-14

N-14 EAST

N-14 FACILITIES & STORAGE AREA

J-16

KAYENTA MINE OFFICE AND SHOP FACILITIES (J-28)

RED VALLEY DIVERSION

DUG OUT VALLEY WASH

N-14 WYE

J-19

J-19 ROAD

N-14

N-14 EAST

N-14 FACILITIES & STORAGE AREA

J-16

KAYENTA MINE OFFICE AND SHOP FACILITIES (J-28)

RED VALLEY DIVERSION

DUG OUT VALLEY WASH

N-14 WYE

J-19

J-19 ROAD

N-14 B

N-14 C

N-14 D

N-14 E

N-14 F

N-14 G

N-14 H

N-14 I

N-14 J

N-14 K

N-14 L

N-14 M

N-14 N

N-14 O

N-14 P

N-14 Q

N-14 R

N-14 S

N-14 T

N-14 U

N-14 V

N-14 W

N-14 X

N-14 Y

N-14 Z

N-14 AA

N-14 AB

N-14 AC

N-14 AD

N-14 AE

N-14 AF

N-14 AG

N-14 AH

N-14 AI

N-14 AJ

N-14 AK

N-14 AL

N-14 AM

N-14 AN

N-14 AO

N-14 AP

N-14

N-14 EAST

N-14 FACILITIES & STORAGE AREA

J-16

KAYENTA MINE OFFICE AND SHOP FACILITIES (J-28)

RED VALLEY DIVERSION

DUG OUT VALLEY WASH

N-14 WYE

J-19

J-19 ROAD

N-14 B

N-14 C

N-14 D

N-14 E

N-14 F

N-14 G

N-14 H

N-14 I

N-14 J

N-14 K

N-14 L

N-14 M

N-14 N

N-14 O

N-14 P

N-14 Q

N-14 R

N-14 S

N-14 T

N-14 U

N-14 V

N-14 W

N-14 X

N-14 Y

N-14 Z

N-14 AA

N-14 AB

N-14 AC

N-14 AD

N-14 AE

N-14 AF

N-14 AG

N-14 AH

N-14 AI

N-14 AJ

N-14 AK

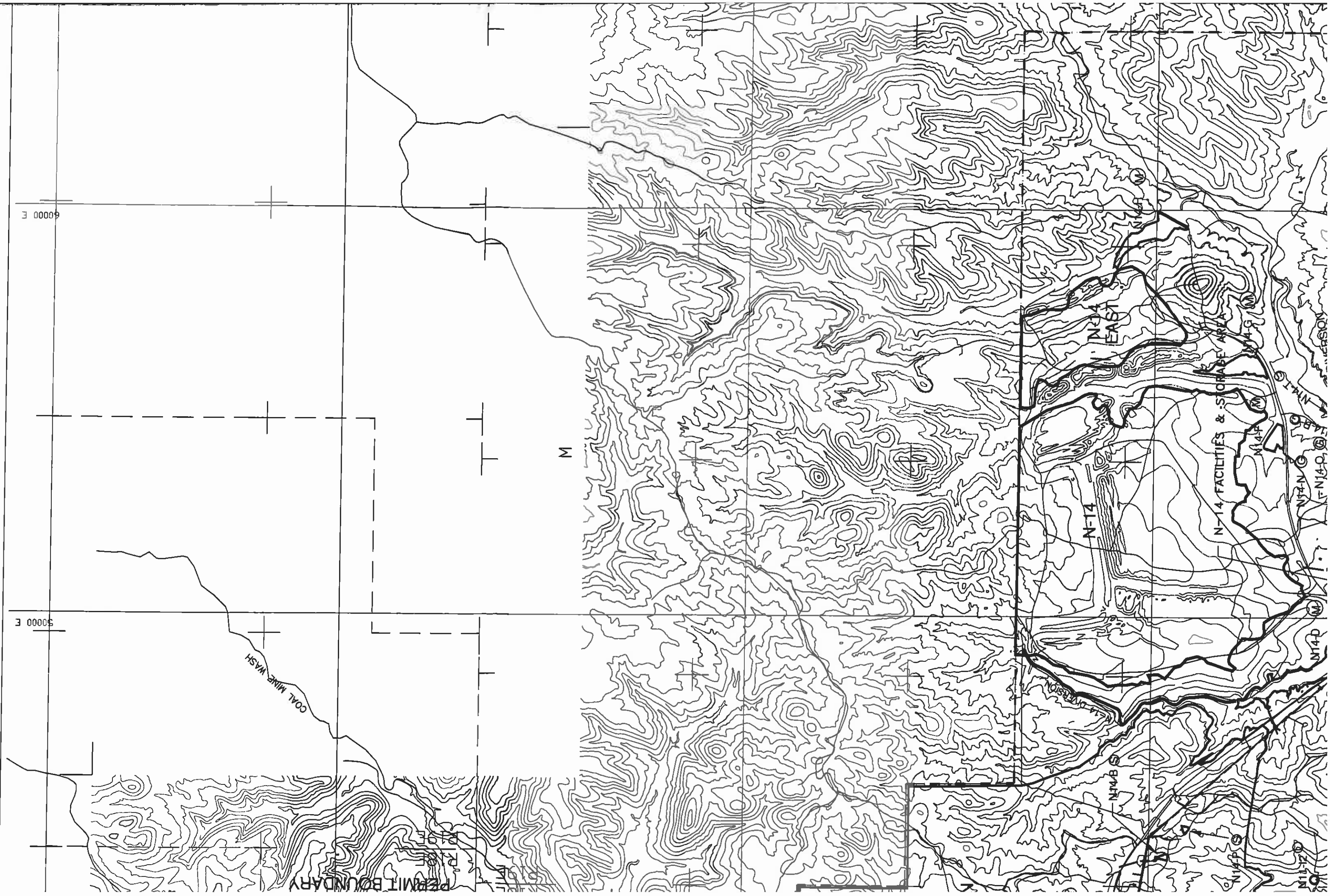
N-14 AL

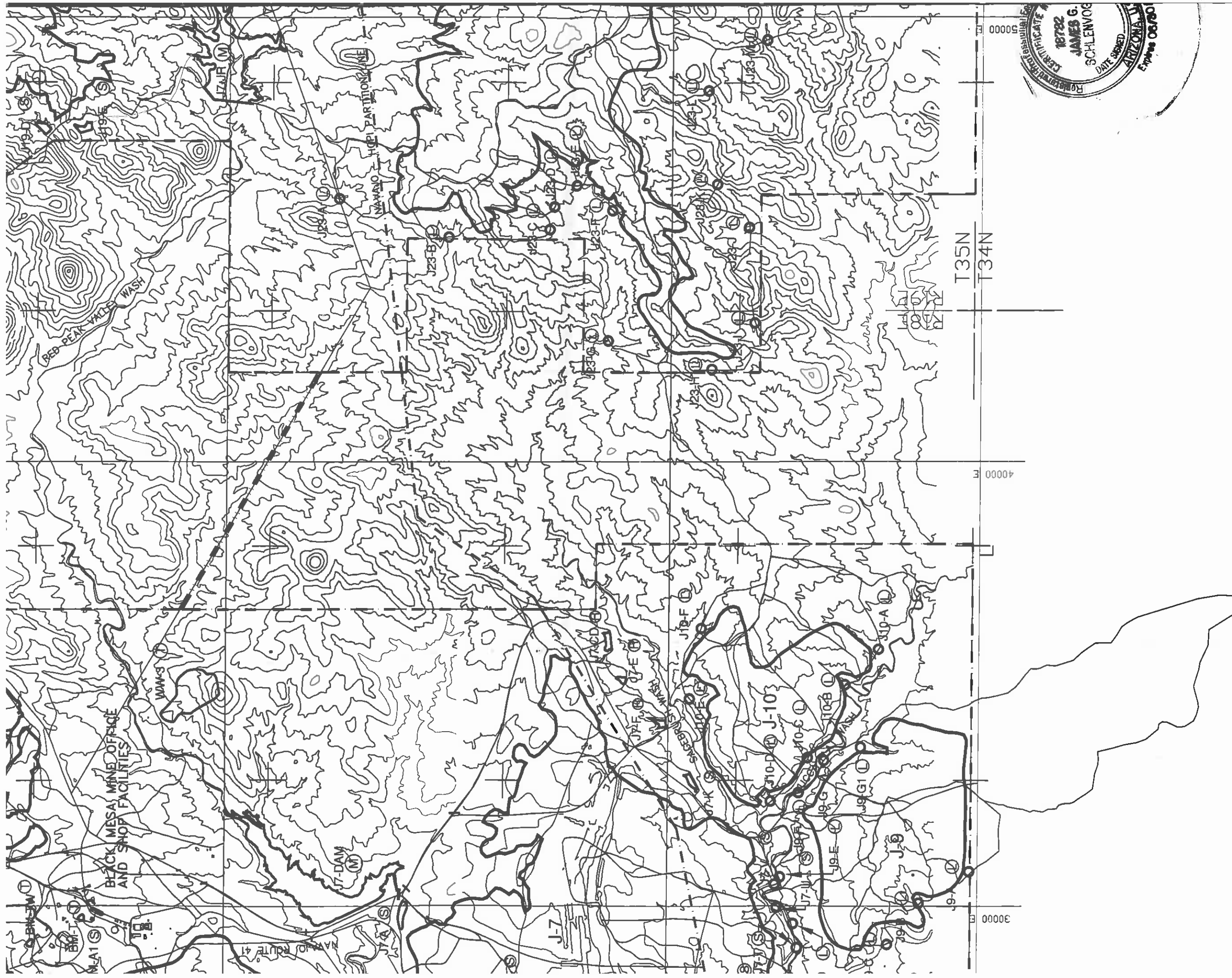
N-14 AM

N-14 AN

N-14 AO

N-14 AP





**NOTES:**

- 1. FOR THE FIVE YEAR TERM (2008-2013)
  - 2. FOR THE REMAINING LIFE-OF-MINE (2014-2025)
1. For additional information, see Volume 1, Chapter 6, 'Sediment and Water Control Facility Plan' and Drawing No. 85400

ENGINEER'S CER

<01-01-08>  
 01-01-08  
 )  
 3)

*James G. Schlenog*  
 ENGINEER





50000 E

40000 E

30000 E

COAL MINE WASH

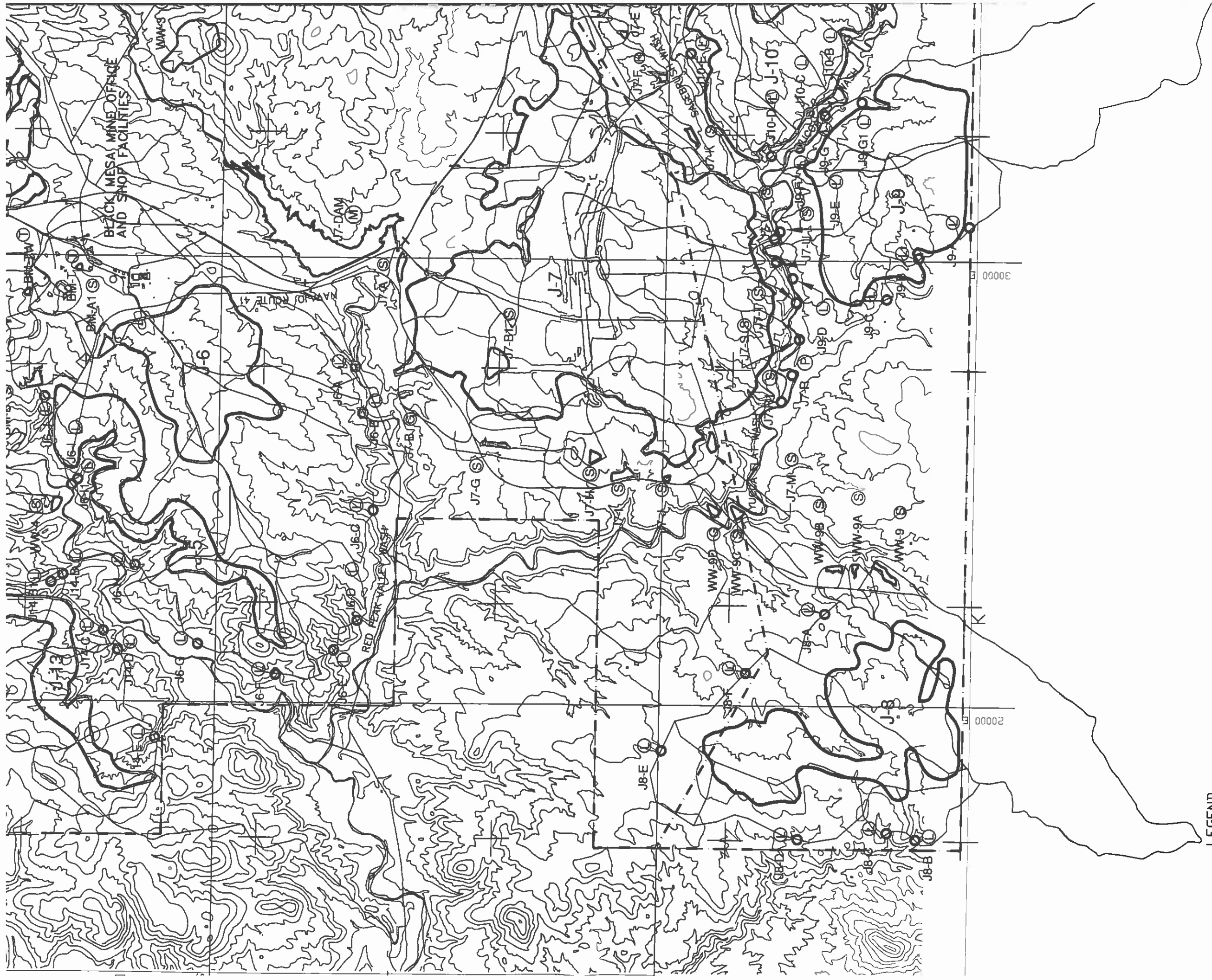
AZ-06010

PERMIT BOUNDARY

N11 EXTENSION

N11 EXTENSION



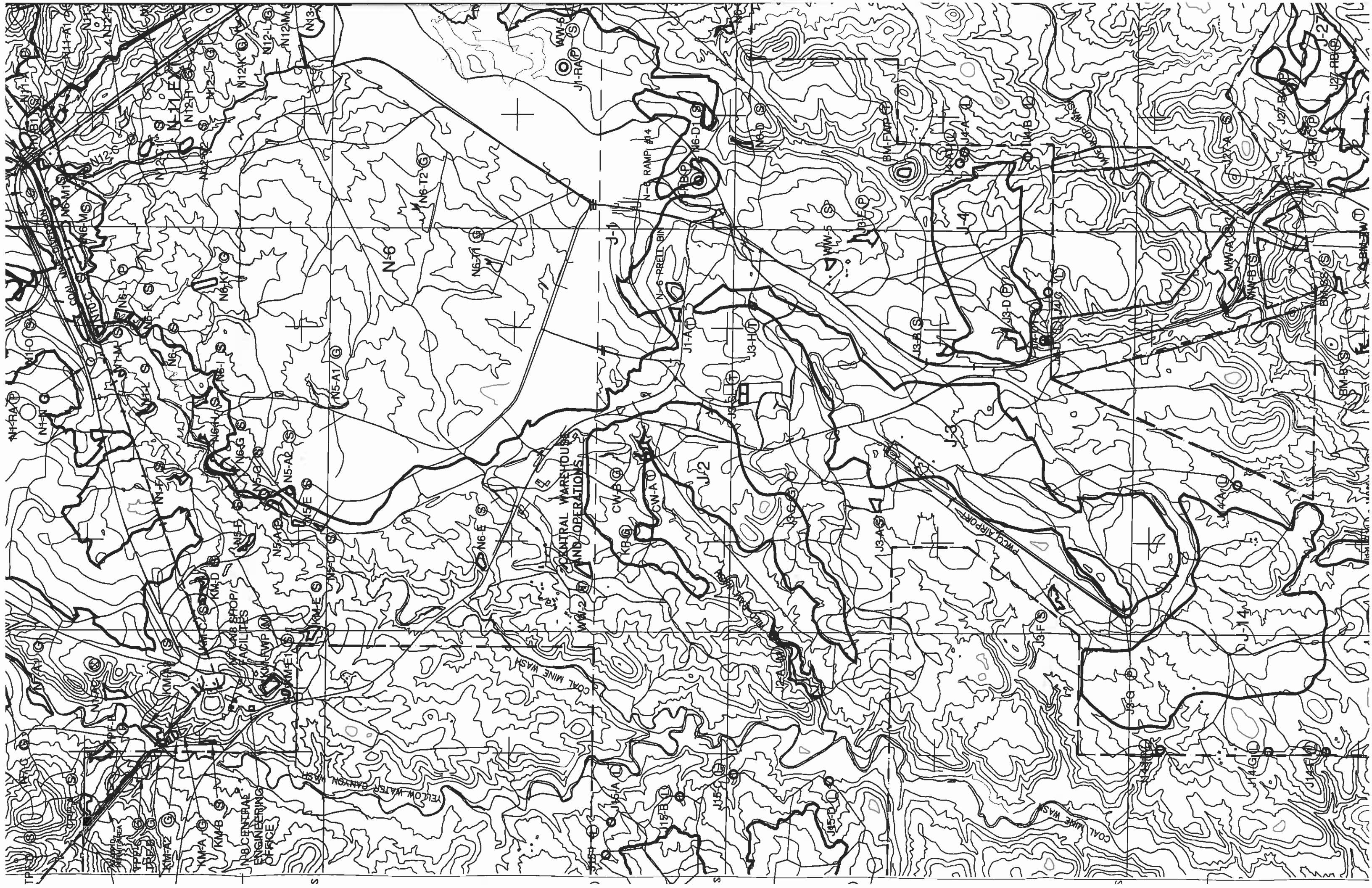


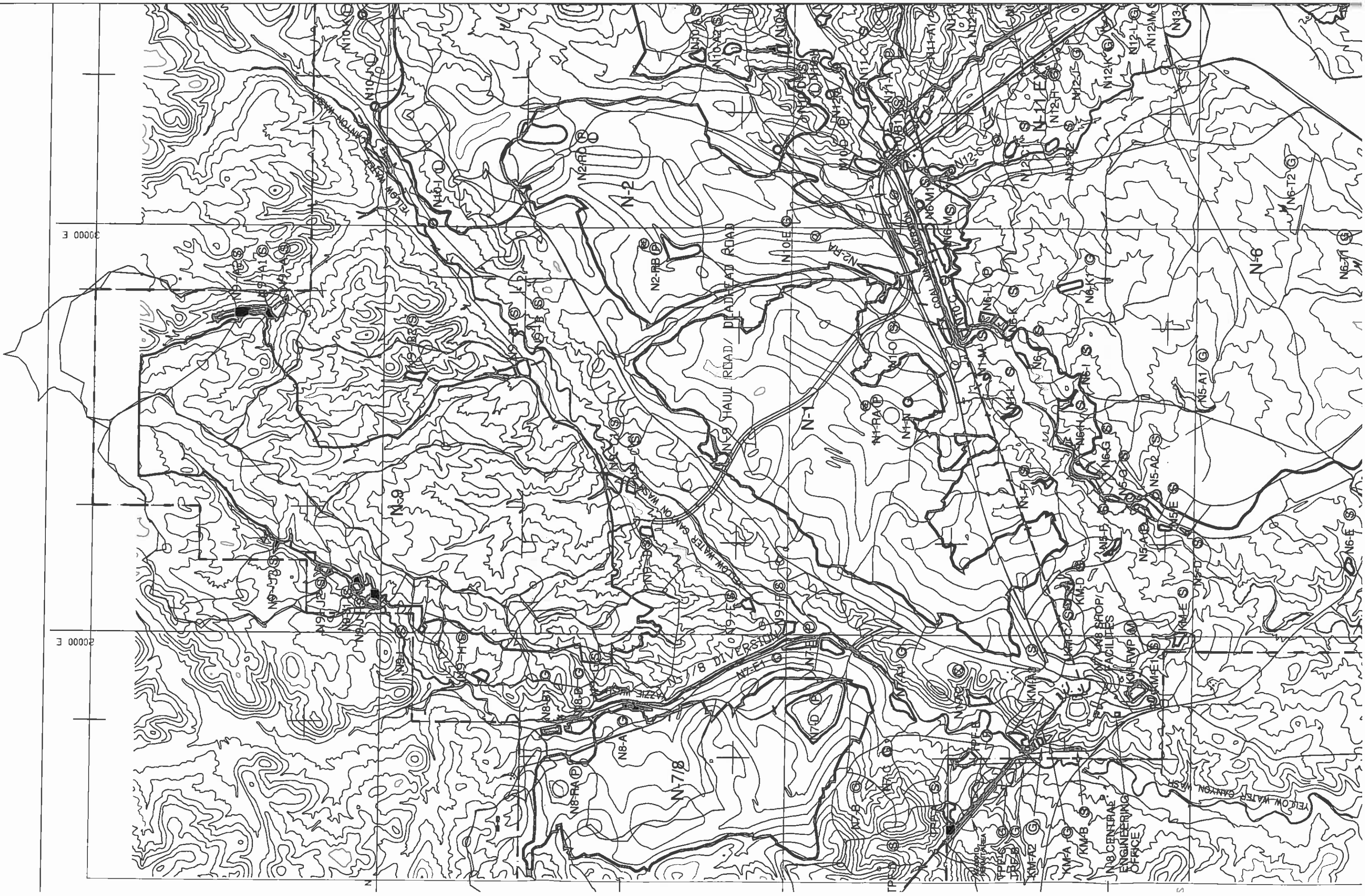
LEGEND

- AZ-0001/AZ-0001D PERMIT BOUNDARY
- LEASE BOUNDARY
- NAVAJO-HOPI PARTITION
- COAL RECOVERY LINE
- PRE-LAW AREA (12-16-77)
- WATERSHED BOUNDARY
- EXISTING IMPOUNDMENT
- PROPOSED IMPOUNDMENT
- --- CULVERTS

- TEMPORARY SEDIMENT POND FOR THE FIVE YEAR TERM (2008-2013)
- TEMPORARY SEDIMENT POND FOR THE REMAINING LIFE-OF-MINE (2014-2014-2)
- MSHA-SIZE DAM
- TEMPORARY IMPOUNDMENT
- PERMANENT IMPOUNDMENT (01-01-08)
- PONDS TO BE RECLAIMED (01-01-08)
- PONDS RELEASED (01-01-08)
- PONDS RECLAIMED (01-01-08)
- DIVERSIONS
- SECTION CORNER

AZ-0001/AZ-0001D PERMIT BOUNDARY  
 LEASE BOUNDARY  
 NAVAJO-HOPI PARTITION  
 COAL RECOVERY LINE  
 PRE-LAW AREA (12-16-77)  
 WATERSHED BOUNDARY  
 EXISTING IMPOUNDMENT  
 PROPOSED IMPOUNDMENT  
 CULVERTS  
 TEMPORARY SEDIMENT POND FOR THE FIVE YEAR TERM (2008-2013)  
 TEMPORARY SEDIMENT POND FOR THE REMAINING LIFE-OF-MINE (2014-2014-2)  
 MSHA-SIZE DAM  
 TEMPORARY IMPOUNDMENT  
 PERMANENT IMPOUNDMENT (01-01-08)  
 PONDS TO BE RECLAIMED (01-01-08)  
 PONDS RELEASED (01-01-08)  
 PONDS RECLAIMED (01-01-08)  
 DIVERSIONS  
 SECTION CORNER





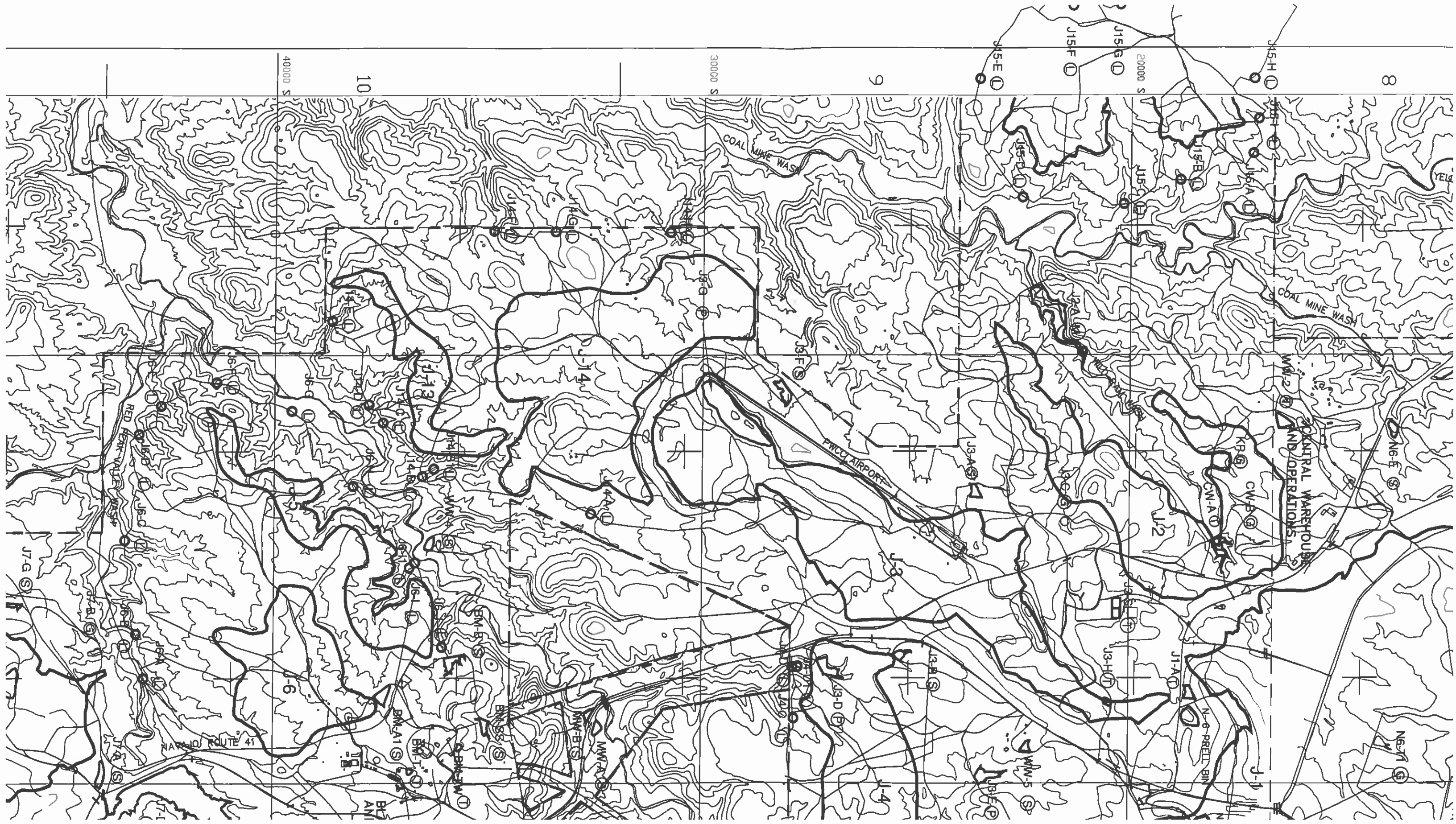
30000 E

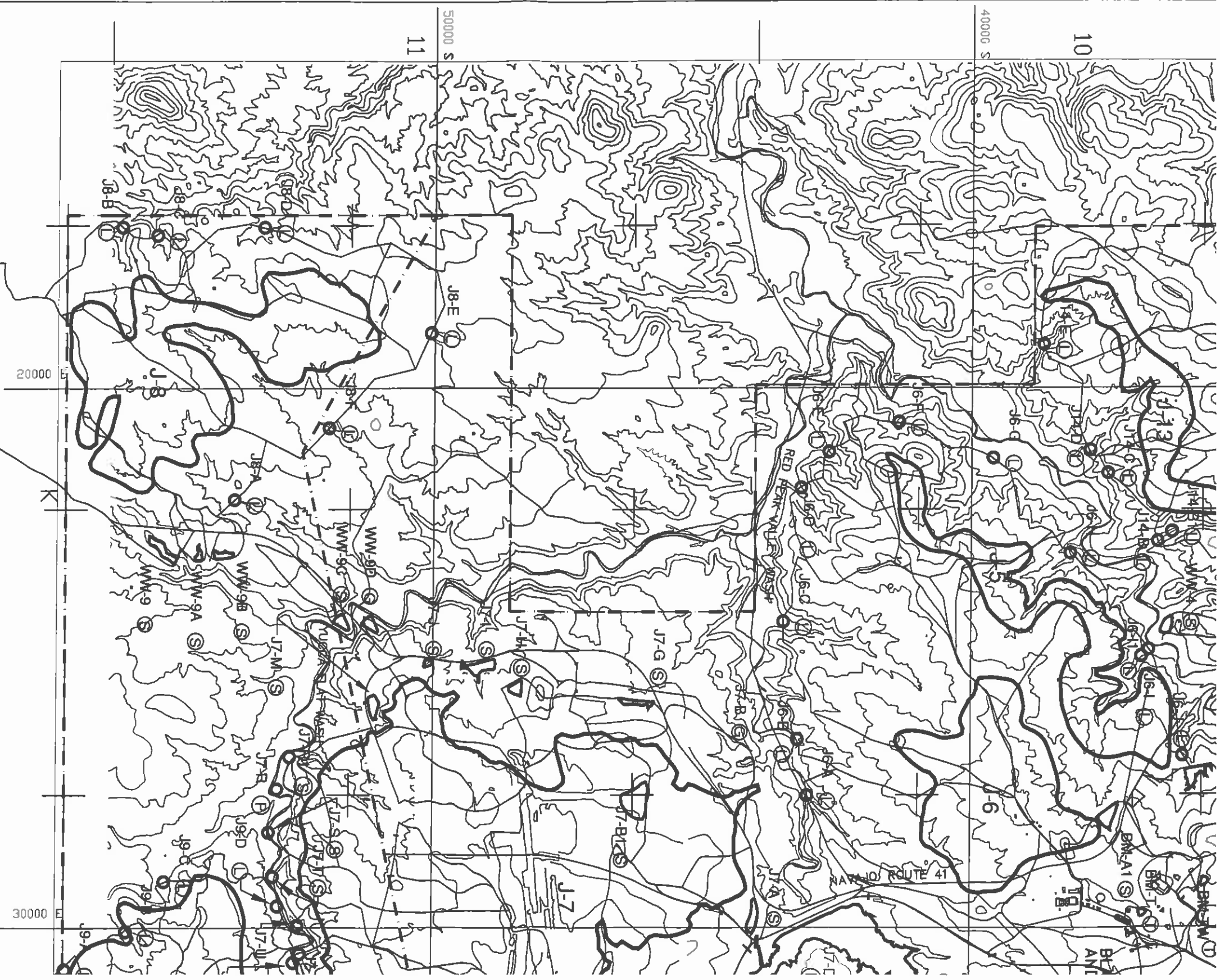
20000 E

N-8 CENTRAL  
ENGINEERING  
OFFICE

YELLOW WATER CANYON







LEGEND

- AZ-0001/AZ-0001D PERMIT BOUNDARY
- LEASE BOUNDARY
- NAVAJO-HUPI PARTION
- COAL RECOVERY LINE
- PRE-LAW AREA (12-16-77)
- WATERSHED BOUNDARY
- EXISTING IMPOUNDMENT
- PROPOSED IMPOUNDMENT
- CULVERTS

- ⊙ TEMPORARY SEDIMENT POND FOR THE FIV
- ⊙ TEMPORARY SEDIMENT POND FOR THE REN
- ⊙ MSHA-SIZE DAM
- ⊙ TEMPORARY IMPOUNDMENT
- ⊙ PERMANENT IMPOUNDMENT (01-01-08)
- ⊙ PONDS TO BE RECLAIMED (01-01-08)
- ⊙ PONDS RELEASED (01-01-08)
- ⊙ PONDS RECLAIMED (01-01-08)
- ⊙ DIVERSIONS
- + SECTION CORNER