

Mine Plan - Drawing #85210

Southwest Sheet



Black Mesa Complex
PO Box 650
Kayenta, Arizona 86033

Produced by PWCC GIS

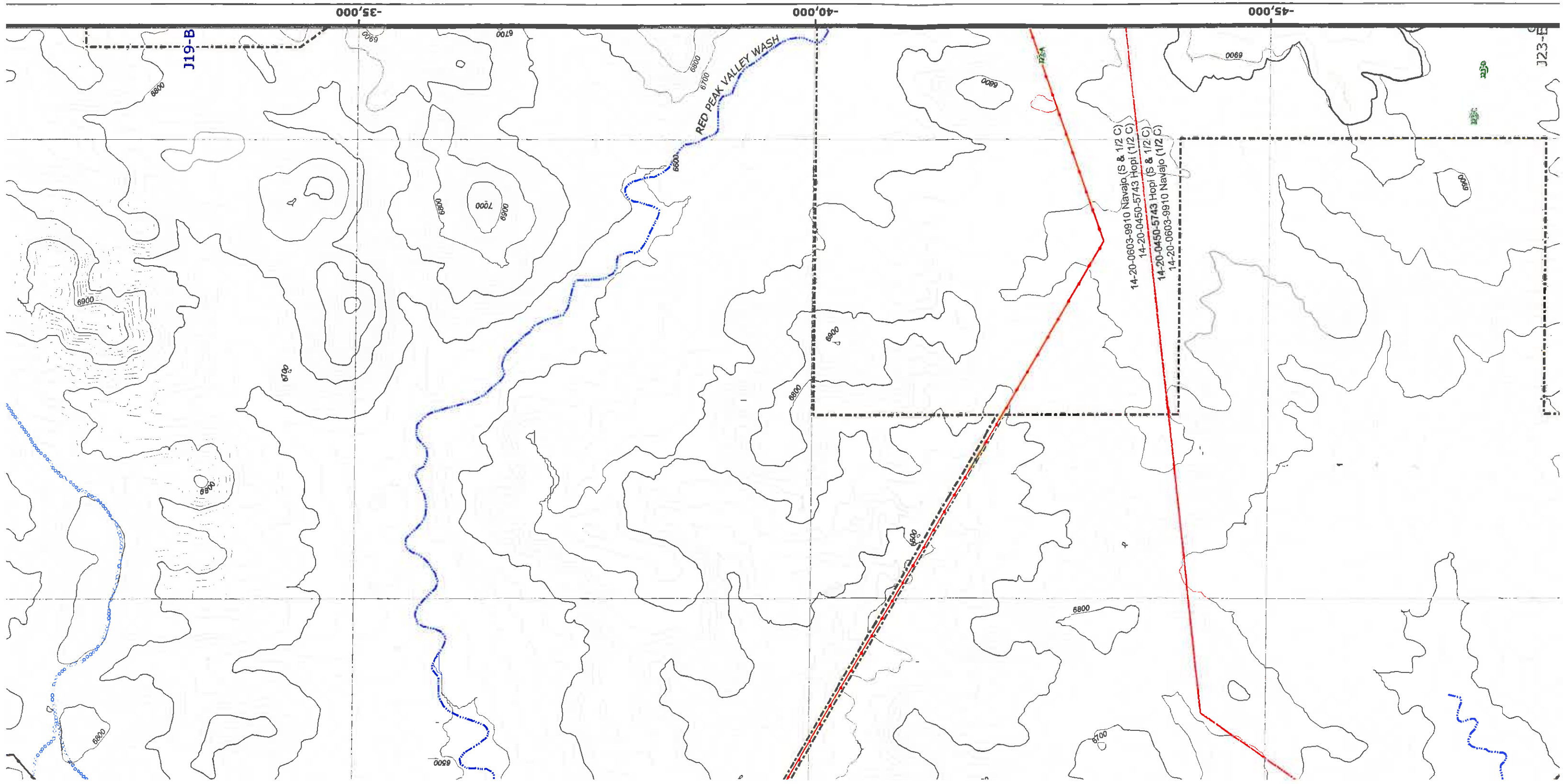
Mar 23, 2007

T:\Projects\Mineplan 85210\Maps\Mineplan 1000.mxd

1 Inch = 1000 Feet

2006 Contours
20 foot Interval
Indexes at 100 feet





-35,000

-40,000

-45,000

J19-B

J23-E

RED PEAK VALLEY WASH

14-20-0603-9910 Navajo (S & 1/2 C)
14-20-0450-5743 Hopi (1/2 C)
14-20-0450-5743 Hopi (S & 1/2 C)
14-20-0603-9910 Navajo (1/2 C)

6500

6900

6800

7000

6800

6700

6800

6700

6800

6700

6800

6800

6900

6800

6700

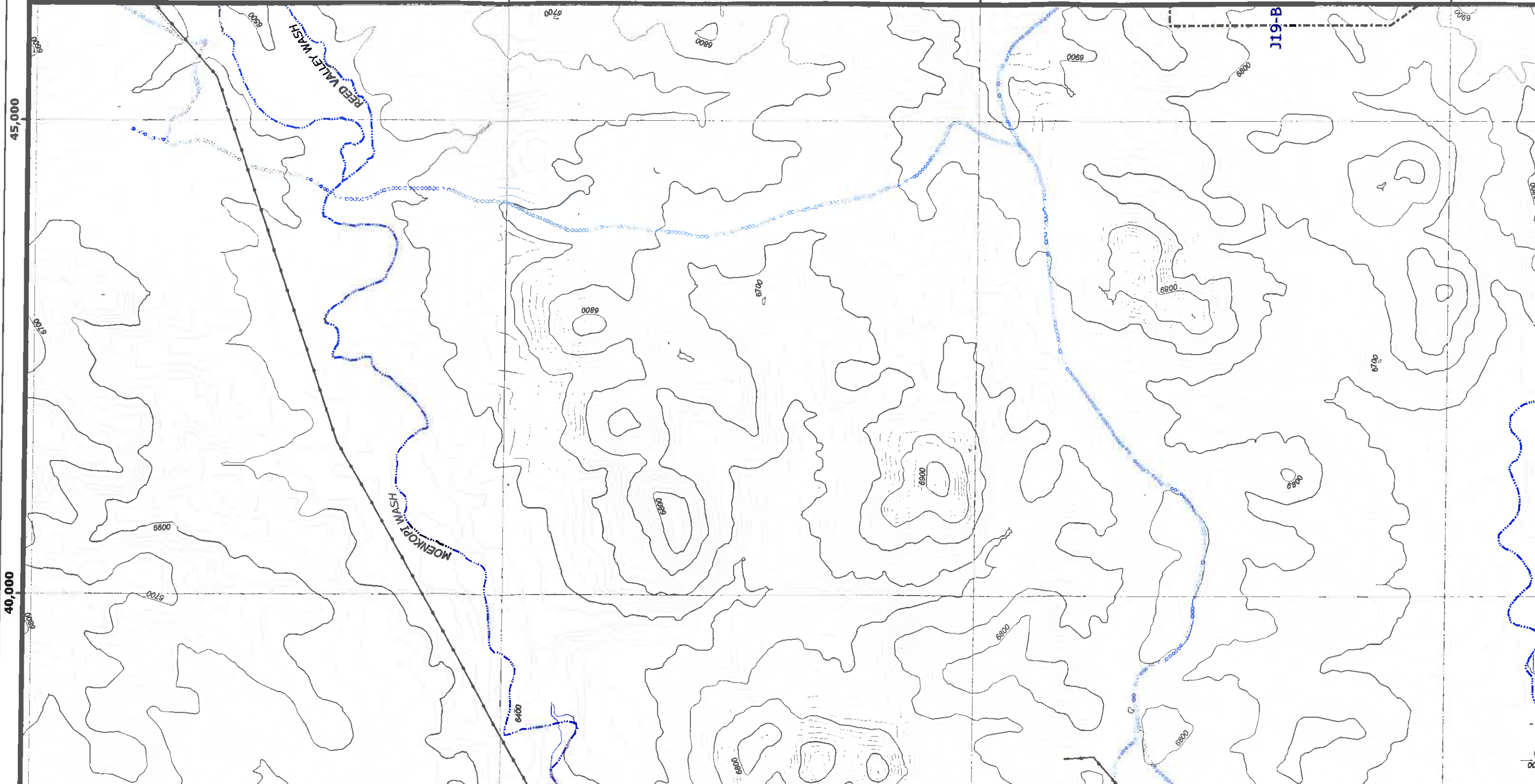
6900

6800

6750

6750

40,000 -20,000 -25,000 -30,000 -35,000



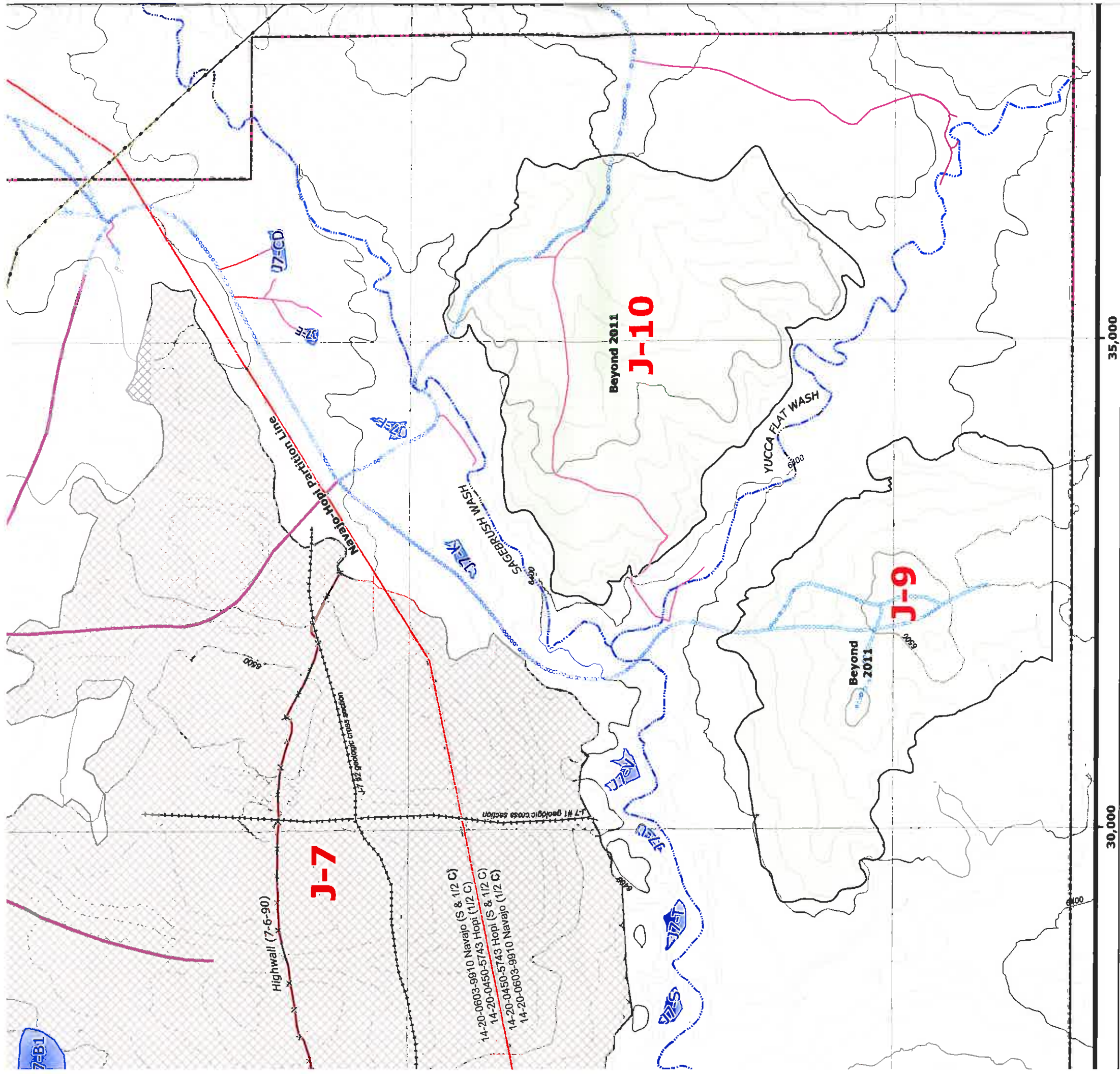
45,000

40,000

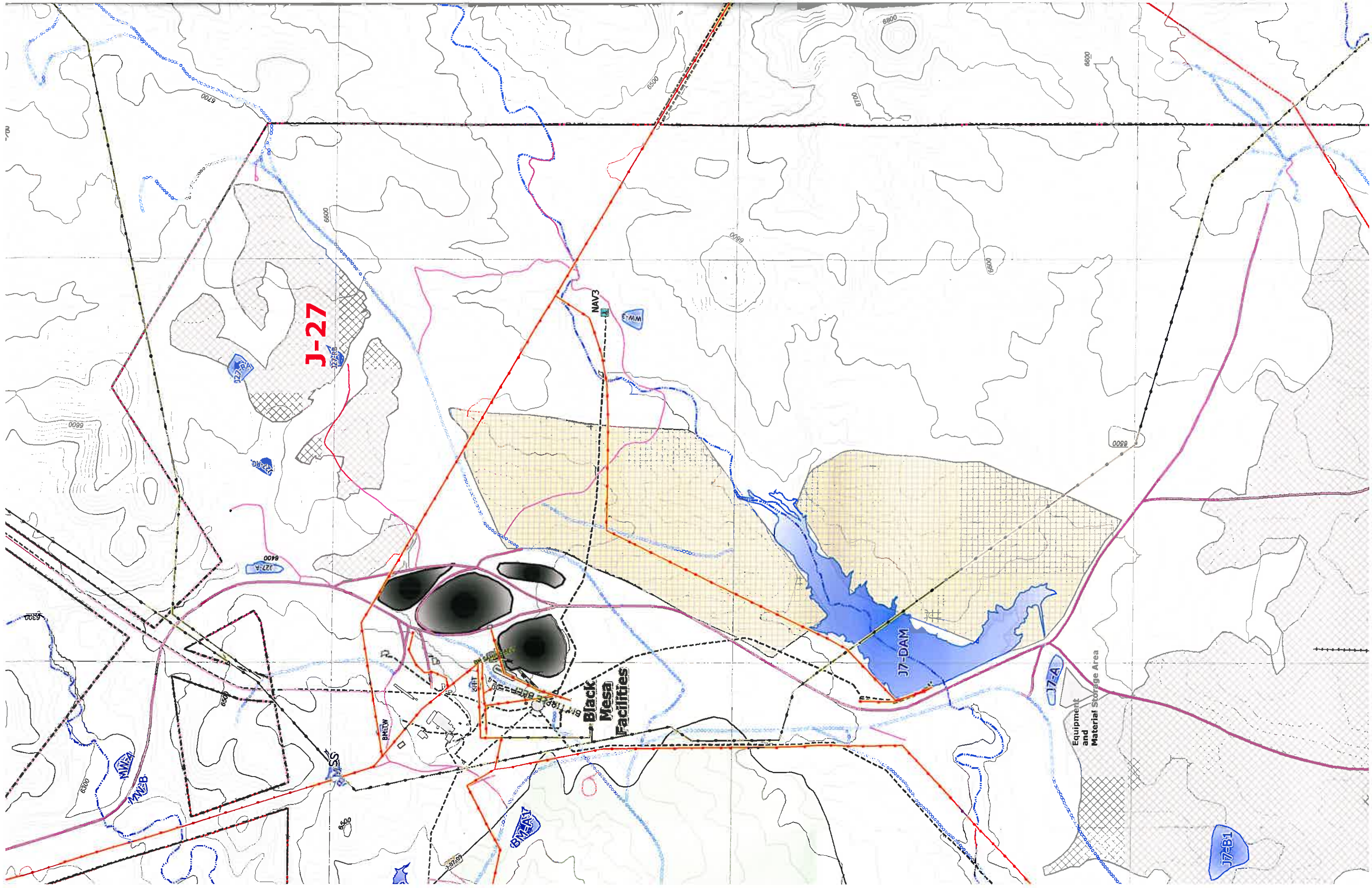
J19-B

REED VALLEY WASH

MOENKOP WASH



| | | | |
|--|--|---|--|
| <p>Mine Plan and Pit Data</p> <ul style="list-style-type: none"> Mine Plan Block (2007-2011) Future Coal Resource Area (2011 and beyond) Mined-Out Area Highwall (7/6/1990) 319 Pit Buffer Geologic Cross-section | <p>Water Features</p> <ul style="list-style-type: none"> Existing Water Impoundment Proposed Water Impoundment Sewage Facility PWCC Water Line Navajo Water Well Major Drainage | <p>Roads</p> <ul style="list-style-type: none"> PWCC Permit 01 Primary PWCC Permit 01 Ramp PWCC Permit 01 Ancillary Non-Mining Road PWCC Permit 1D | <p>Powerlines</p> <ul style="list-style-type: none"> PWCC Non-PWCC |
| <p>Protected Areas</p> <ul style="list-style-type: none"> TCP Site Protected Area | <p>Stockpiles and Scoria Pits</p> <ul style="list-style-type: none"> Topsoil Stockpile On Spill Coal Stockpile Scoria Pit | <p>Administrative Boundaries</p> <ul style="list-style-type: none"> 01 Permit Line 1D Permit Line Navajo-Hopi Partition Line PWCC Lease Line | <p>Coal Transport and Mine Facilities</p> <ul style="list-style-type: none"> PWCC Conveyor SRP/NGS Railroad PWCC Buildings and Structures Explosives Storage Facility |



J-27

Black Mesa Facilities

J7-DAM

Equipment and Material Storage Area

J7-B1

35,000

N6-C

30,000

Ramp 14 Readyline and Storage Area

J-10-F

N06 Storage and Support Facility Yard

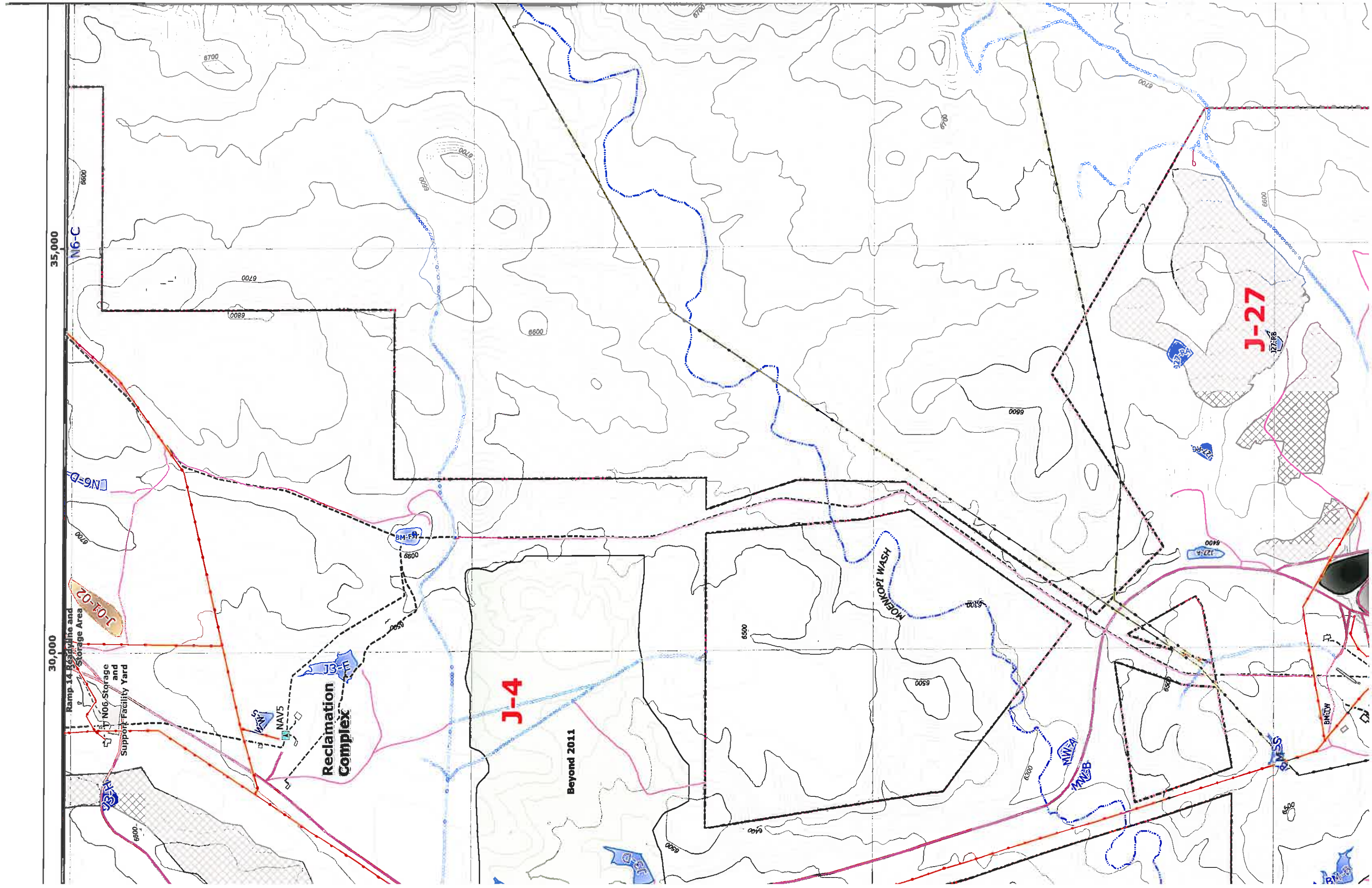
Reclamation Complex

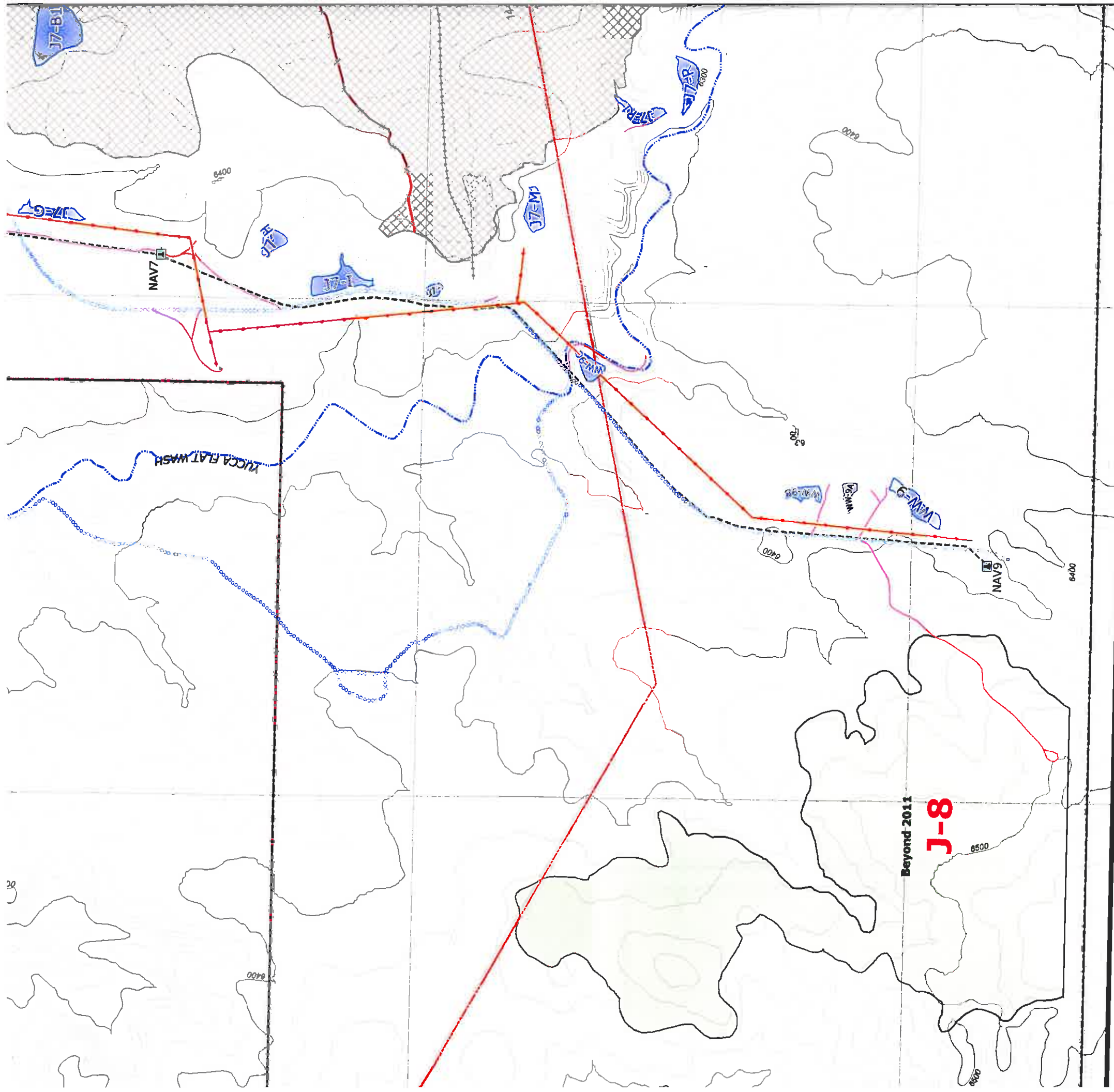
J-4

Beyond 2011

MOENKOPI WASH

J-27

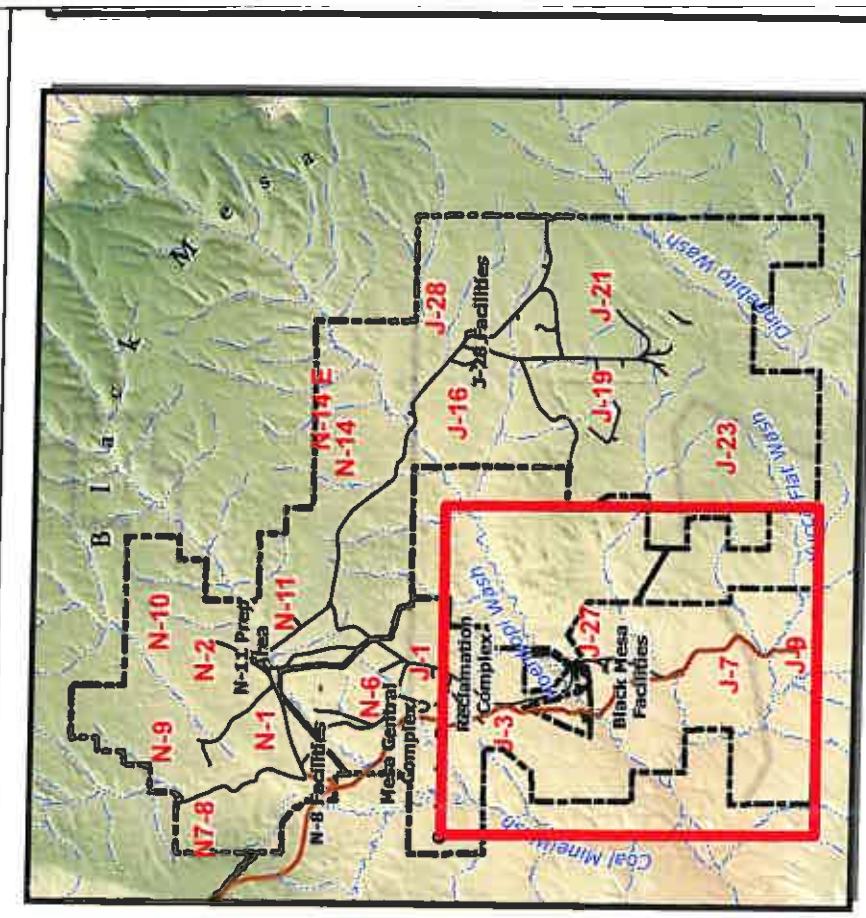


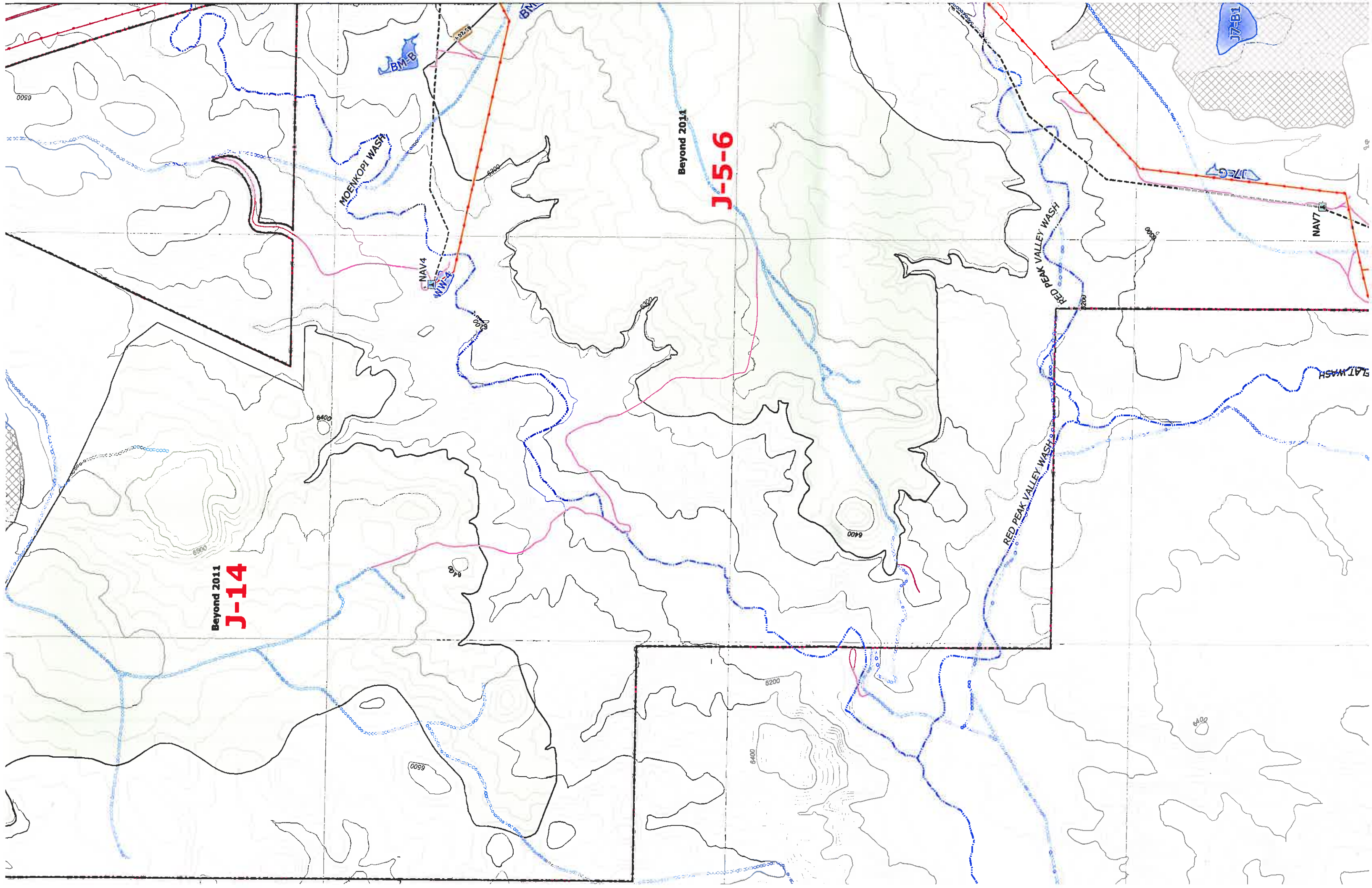


ATTENTION

12 MAR 23 2007
Date

| MAP REVISIONS | |
|---------------|---|
| CHK'D | DATE DESCRIPTION |
| JGS | 01-20-2004 5 Yr. Mineplan Rev. |
| JGS | 06-05-2004 Powerline Rev. |
| JGS | 01-14-2005 N-9 5 Yr. Mineplan Rev. |
| JGS | 02-25-2005 Permit Renewal |
| JGS | 06-15-2005 N-9 Facilities Rev. |
| JGS | 06-15-2005 N-09 & N-06 Facilities Rev. |
| JGS | 12-15-2005 N-09 Sequence Rev. |
| JGS | 01-20-2006 OSM Response |
| GW | 04-12-2006 Roads and TCP Revisions |
| JGS | 07-12-2006 Support Facility Revisions |
| JGS/GW | 03-21-2007 Feature Revisions / Software Upgrade |
| | |
| | |
| | |





Beyond 2011
J-14

Beyond 2011

J-5-6

MOEINKOPT WASH

RED PEAK VALLEY WASH

RED PEAK VALLEY WASH

FLAT WASH

NAV4

NAV7

BM-B

J7-B1

6500

6300

6200

6400

6400

6400

6200

6400

6400

6500

20,000

25,000

WILD RANVALEY WASH

J-2

Beyond 2011

Contractor Park

J2-A

05-05

J3-A

J-3 Airport

J-3

J3-G

J3-B

6400

6500

6500

6500

6500

6500

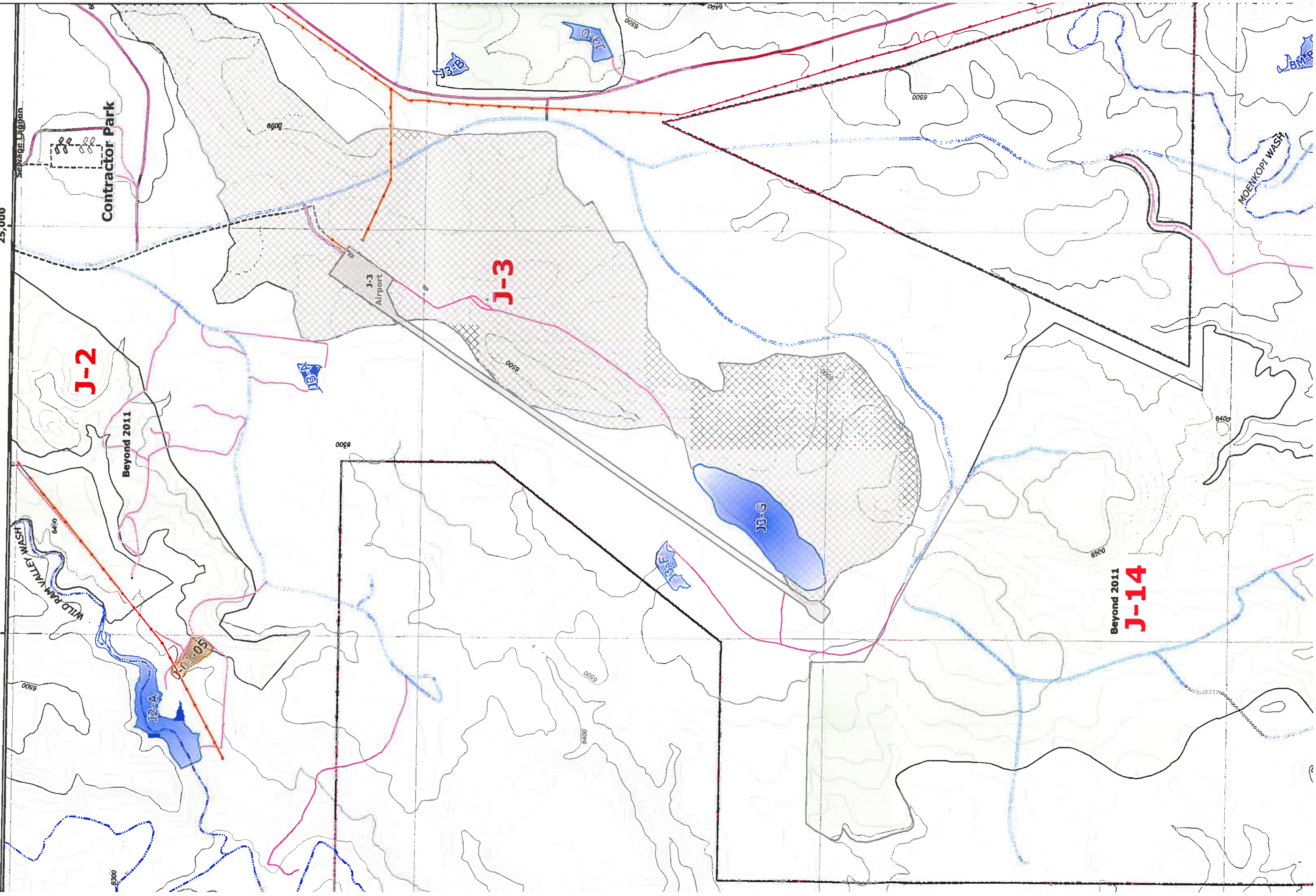
6400

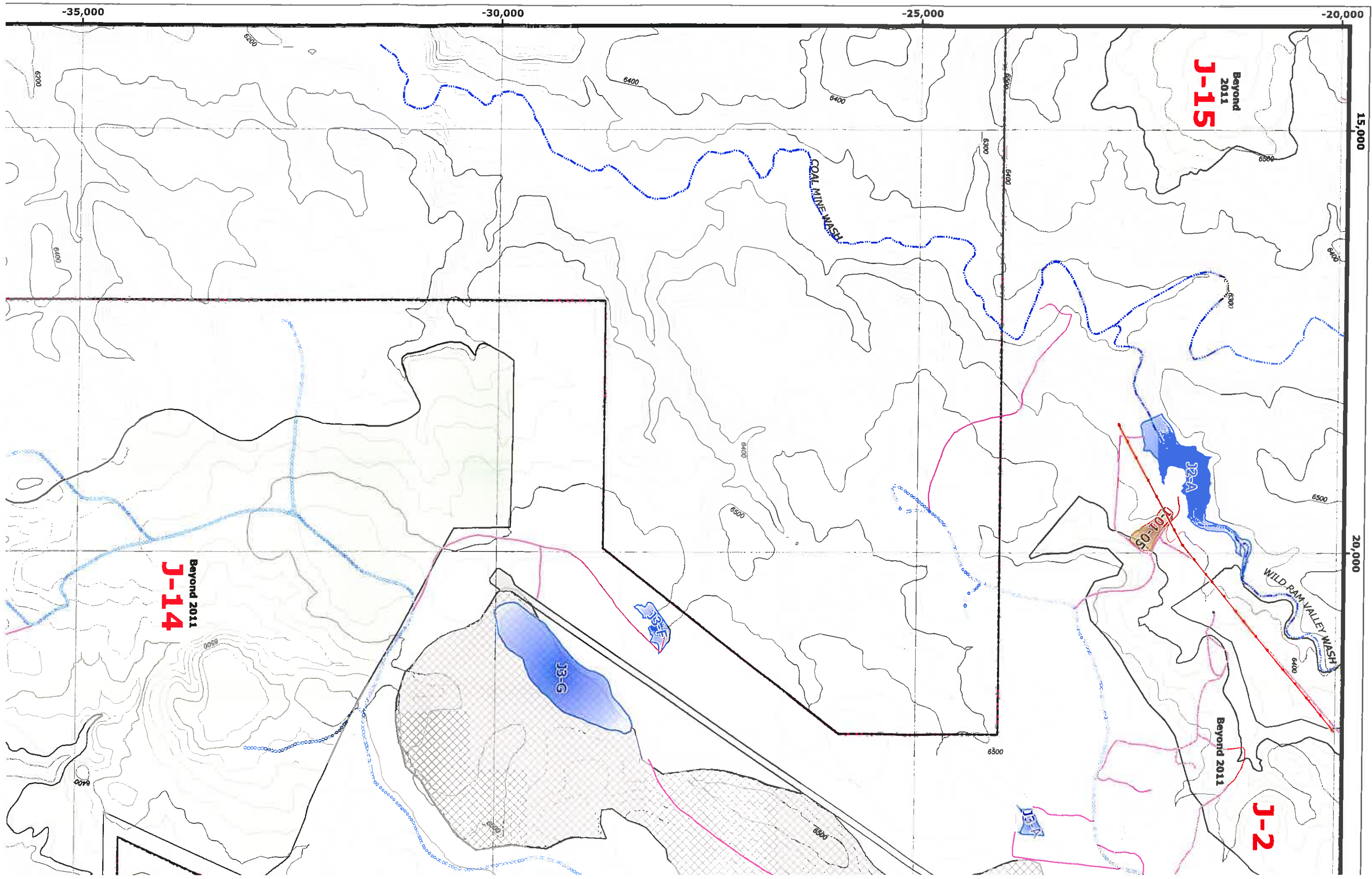
Beyond 2011

J-14

MOENKOPI WASH

J3-C



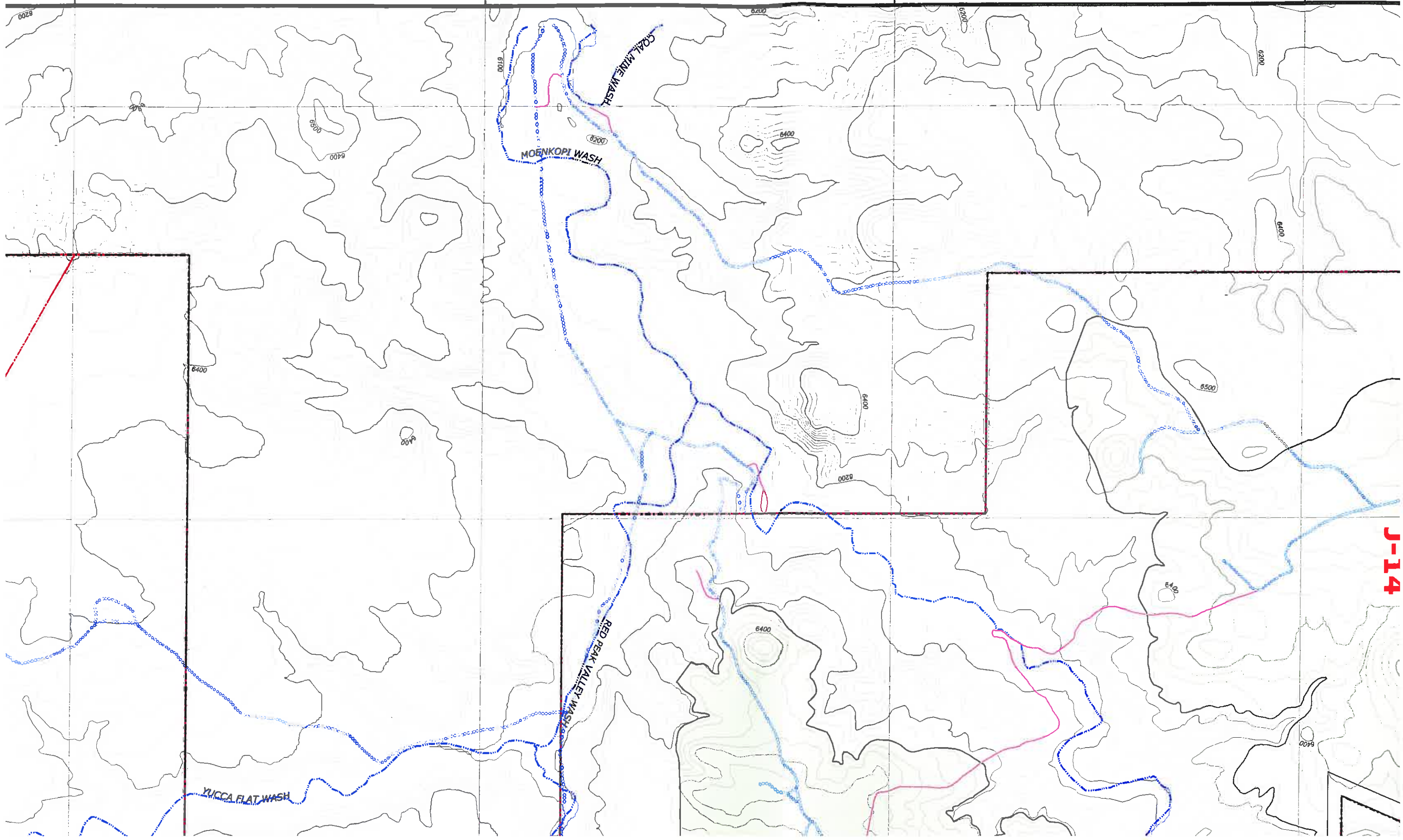


-50,000

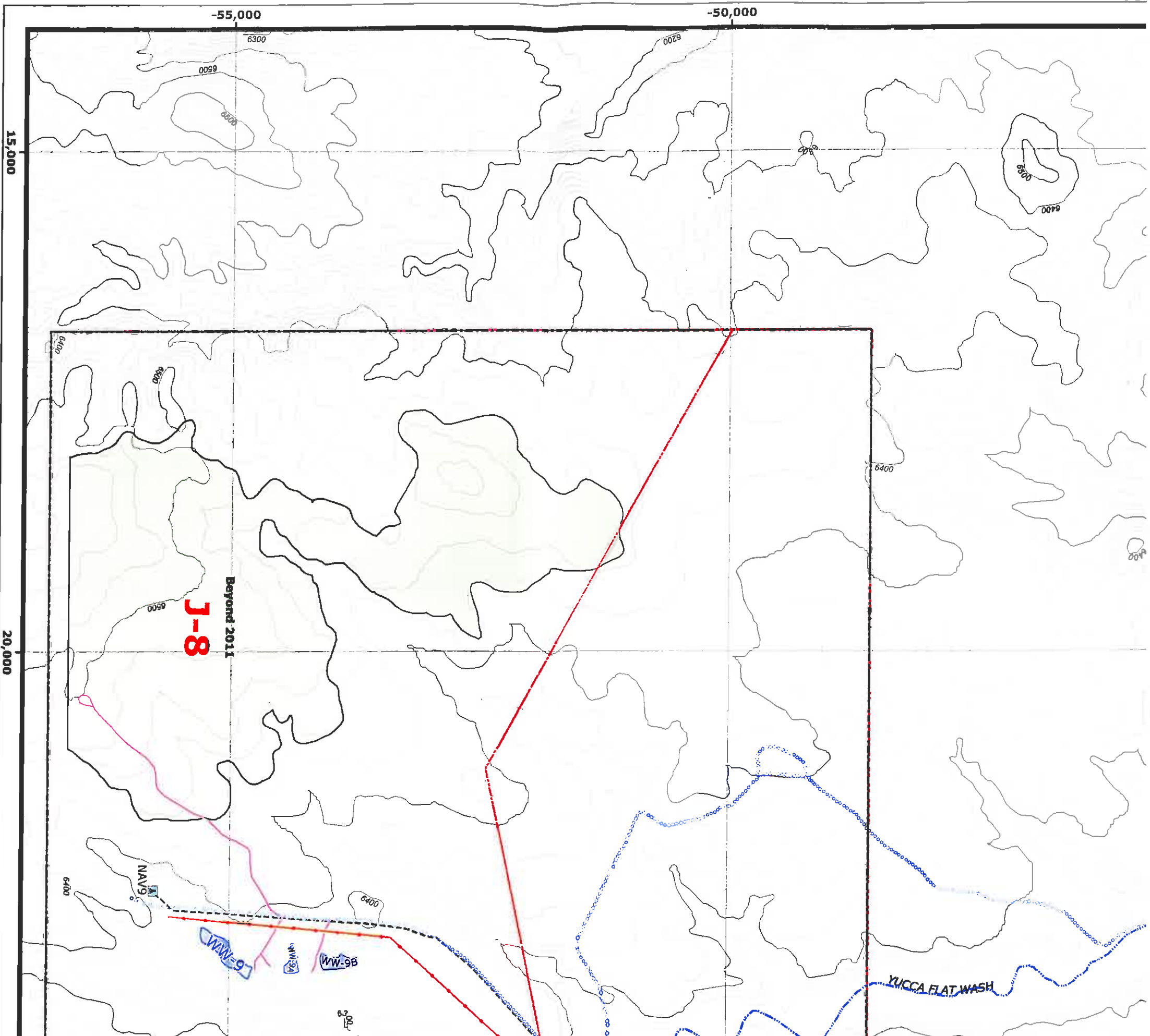
-45,000

-40,000

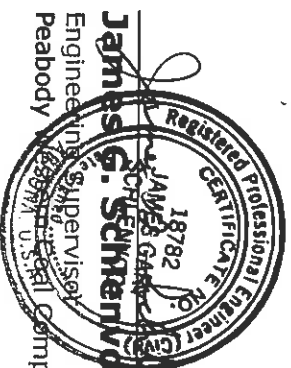
-35,000



J-14



ENGINEER'S CERTIFICATION



James G. Schenavogt
 Engineering Supervisor
 Peabody Energy Coal Company

MAR 23 2007
 Date

MAP REVISIONS

| CHK'D | DATE | DESCRIPTION |
|--------|------------|--------------------------------------|
| JGS | 01-20-2004 | 5 Yr. Mineplan Rev. |
| JGS | 06-05-2004 | Powerline Rev. |
| JGS | 01-14-2005 | N-9 5 Yr. Mineplan Rev. |
| JGS | 02-25-2005 | Permit Renewal |
| JGS | 06-15-2005 | N-9 Facilities Rev. |
| JGS | 06-15-2005 | N-09 & N-06 Facilities Rev. |
| JGS | 12-15-2005 | N-09 Sequence Rev. |
| JGS | 01-20-2006 | OSM Response |
| GW | 04-12-2006 | Roads and TCP Revisions |
| JGS | 07-12-2006 | Support Facility Revisions |
| JGS/GW | 03-21-2007 | Feature Revisions / Software Upgrade |

