

Mine Plan - Drawing #85210

Northeast Sheet



Black Mesa Complex
 PO Box 650
 Kayenta, Arizona 86033

Produced by PWCC GIS

Mar 23, 2007

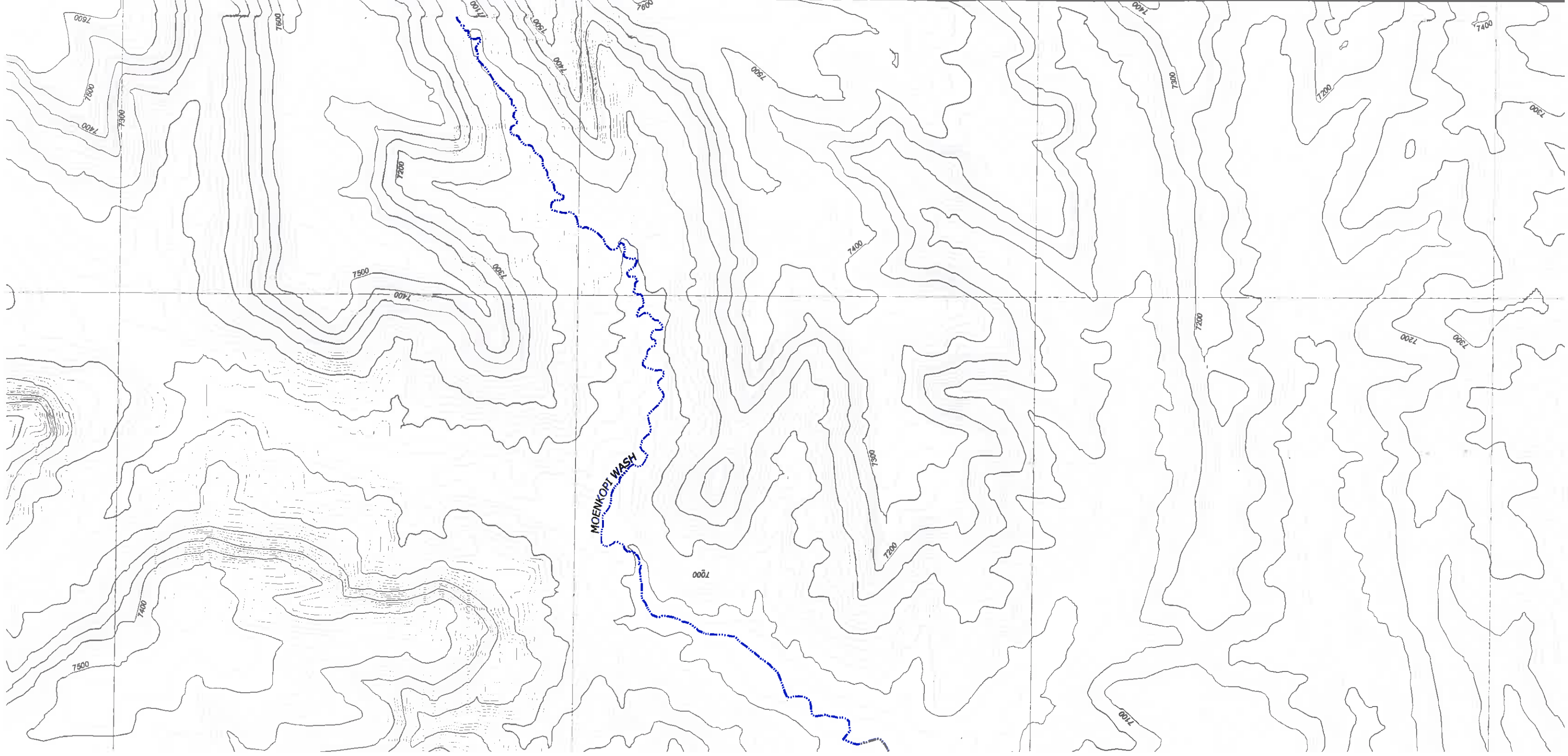
T:\Projects\Mineplan 85210\Maps\Mineplan 1000.mxd

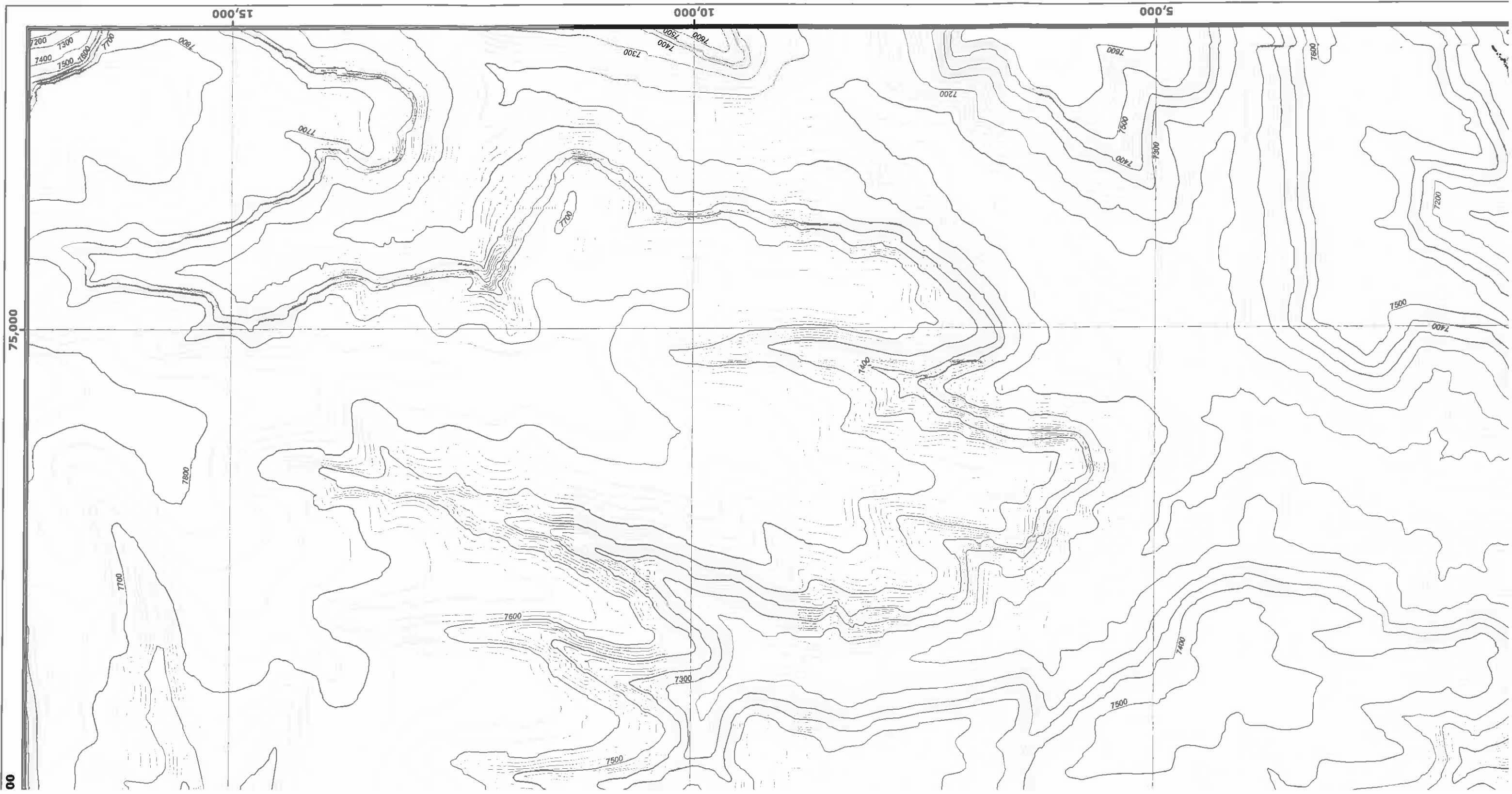
1 Inch = 1000 Feet

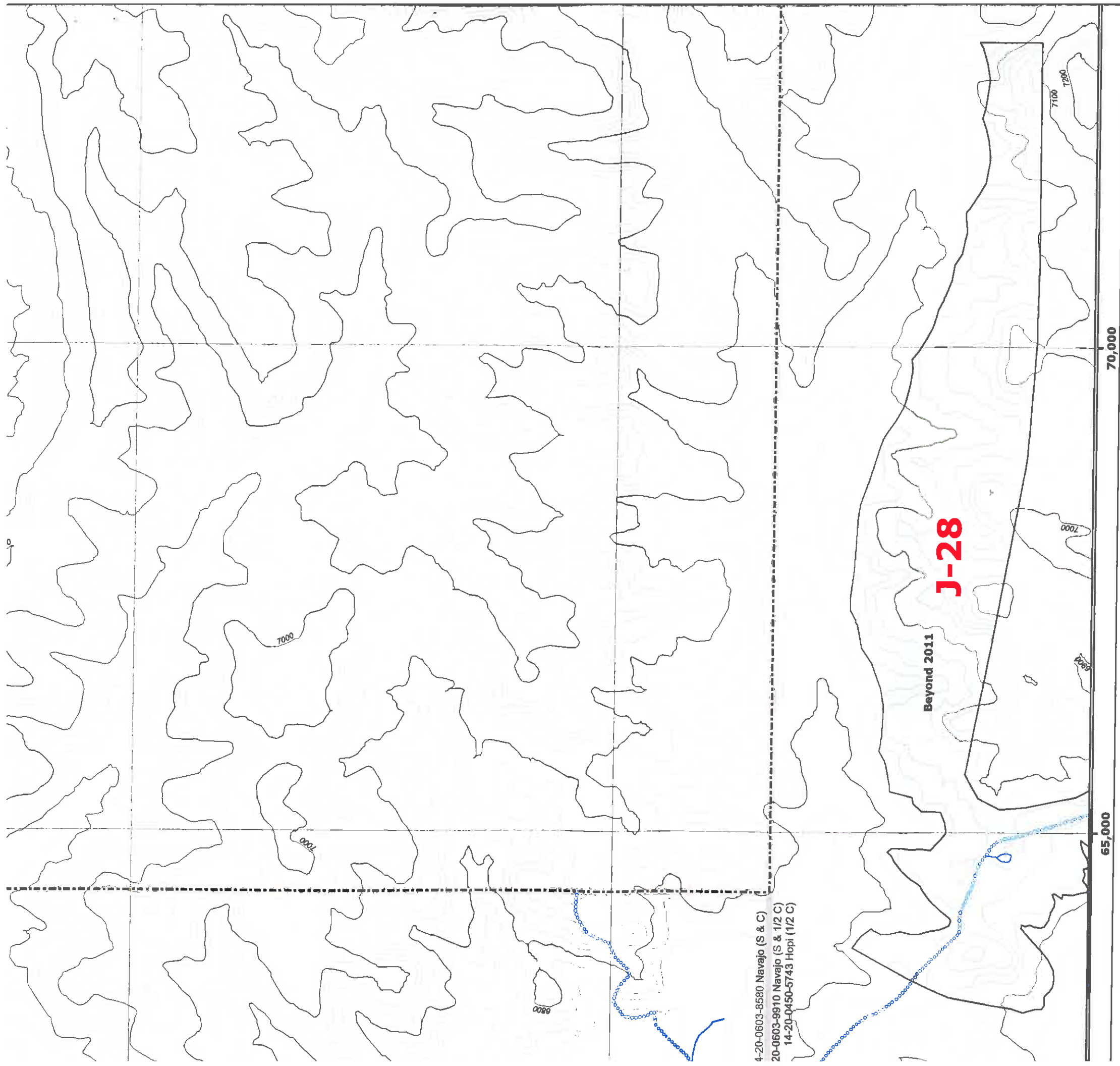
2006 Contours
 20 foot interval
 Indexes at 100 feet



5,000 0 -5,000 -10,000







4-20-0603-8580 Navajo (S & C)
 20-0603-9910 Navajo (S & 1/2 C)
 14-20-0450-5743 Hopi (1/2 C)

65,000

70,000

Water Features

- Existing Water Impoundment
- Proposed Water Impoundment
- Sewage Facility
- PWCC Water Line
- Navajo Water Well
- Major Drainage

Roads

- Primary
- Ramp
- Ancillary
- Non-Mining Road

Powerlines

- PWCC
- Non-PWCC

Administrative Boundaries

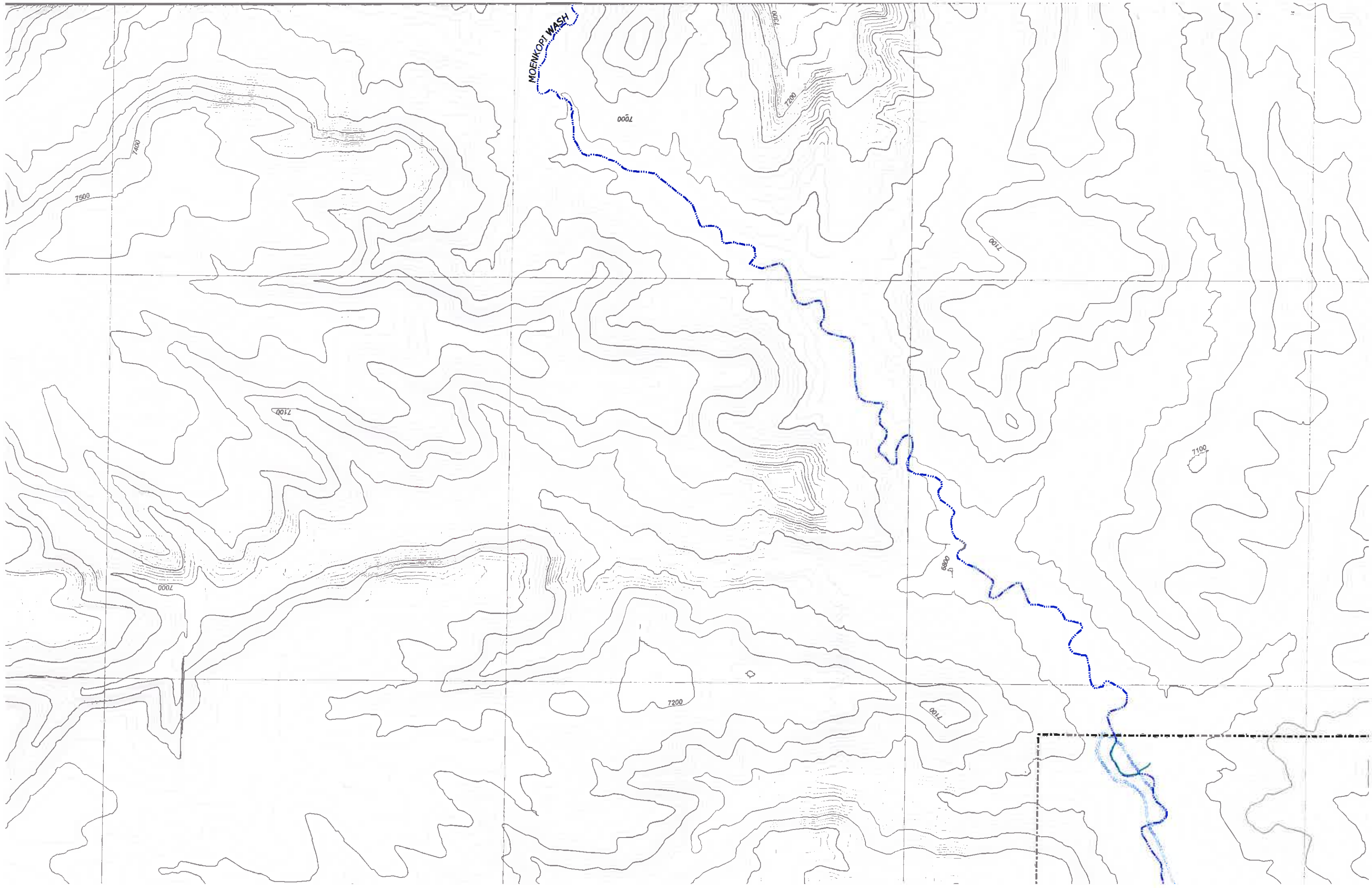
- 01 Permit Line
- 1D Permit Line
- Navajo-Hopi Partition Line
- PWCC Lease Line

Coal Transport and Mine Facilities

- PWCC Conveyor
- SRP/NGS Railroad
- PWCC Buildings and Structures
- Explosives Storage Facility

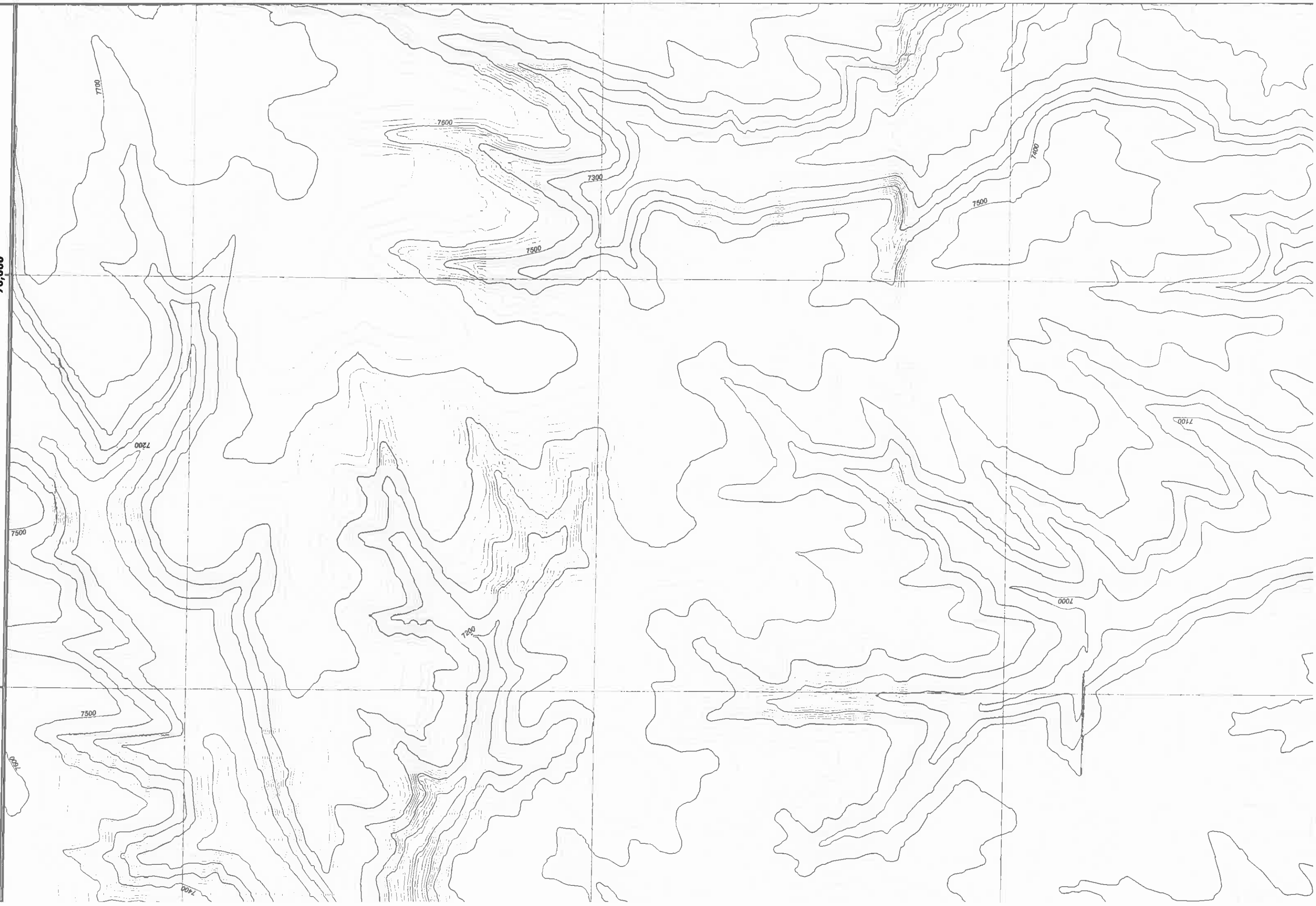
Mine Plan - North

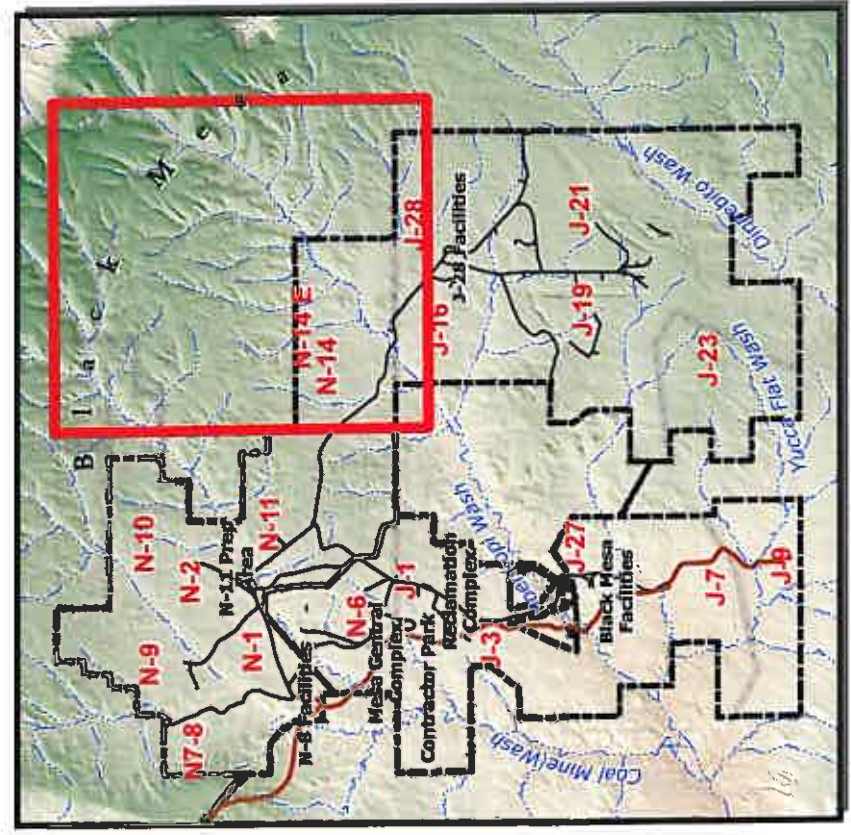
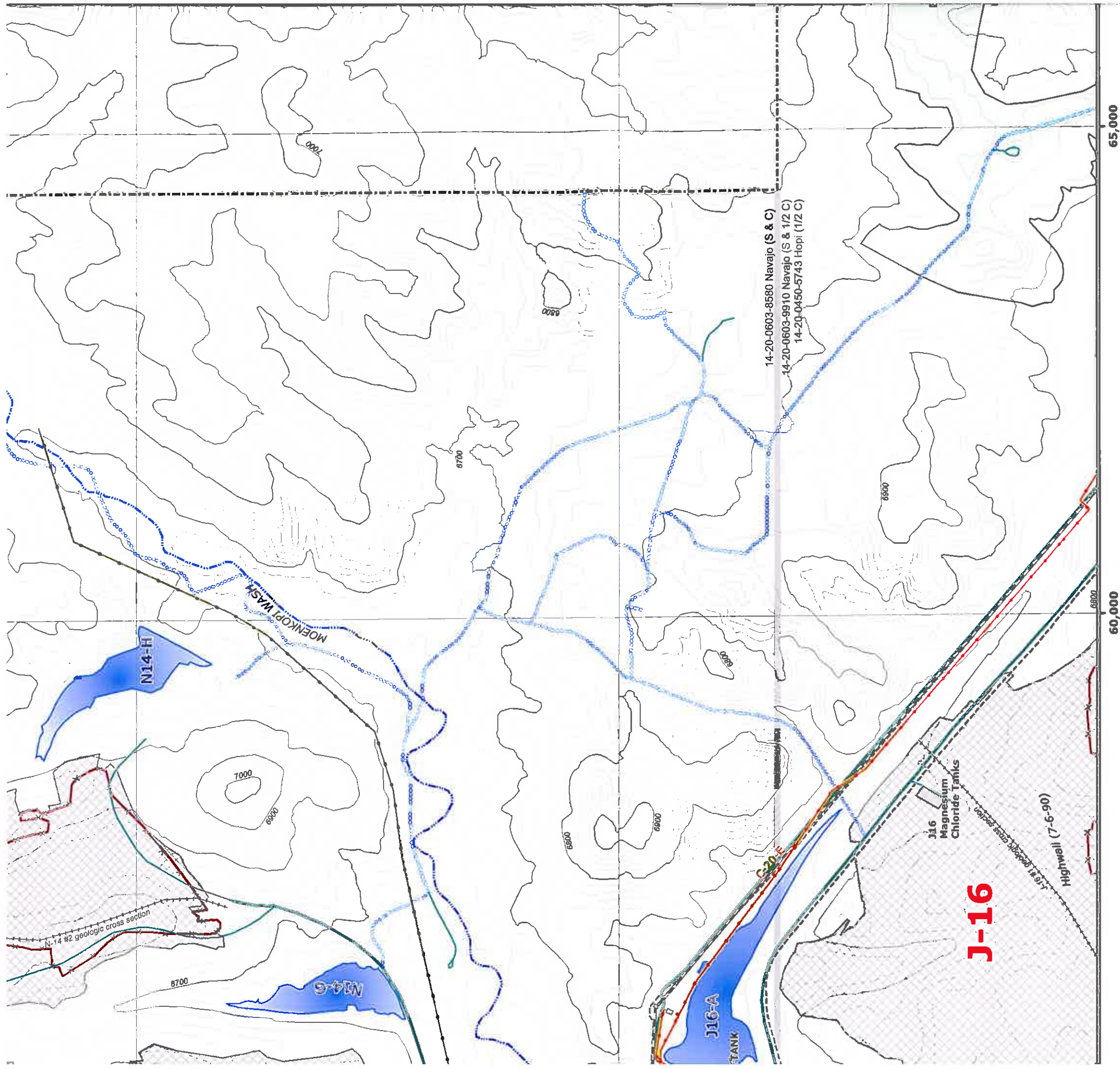
Black Mesa Complex
 PO Box 650
 Kayenta, Arizona 86033



70,000

65,000





Mine Plan and Pit Data

- Mine Plan Block (2007-2011)
- Future Coal Resource Area (2011 and beyond)
- Mined-Out Area
- Highwall (7/6/1990)
- Geologic Cross-section
- J19 Pit Buffer

Protected Areas

- TCP Site
- Protected Area

Stockpiles and Scoria Pits

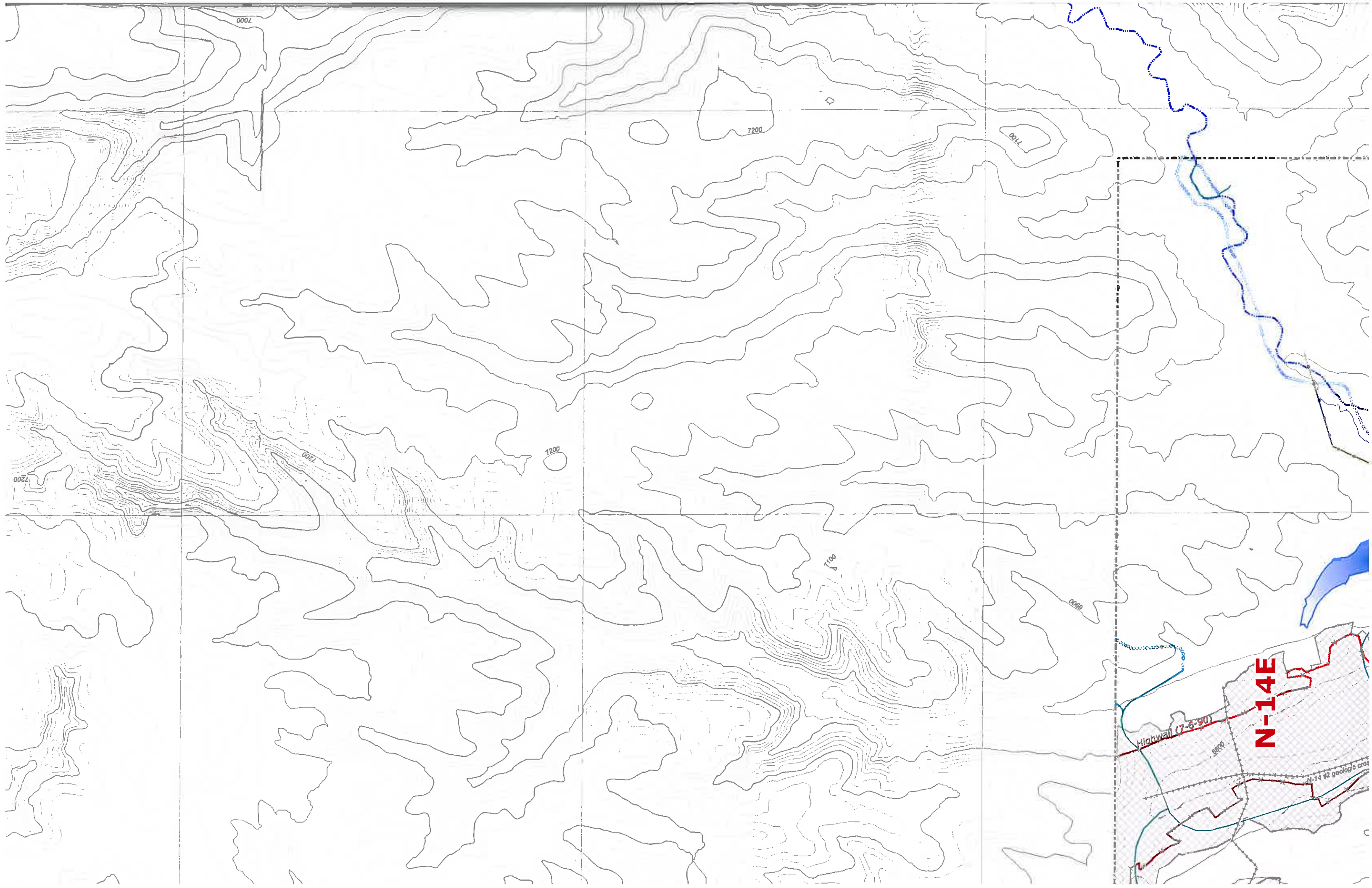
- Topsoil Stockpile Off Spill
- Topsoil Stockpile On Spill
- Coal Stockpile
- Scoria Pit

Water Features

- Existing Water Impoundment
- Proposed Water Impoundment
- Sewage Facility
- PWCC Water Line
- Navajo Water Well
- Major Drainage

Administrative Boundaries

- 01 Permit Line
- 1D Permit Line
- Navajo-Hopi Partition Line
- PWCC Lease Line



7000

7200

7100

7200

7200

7200

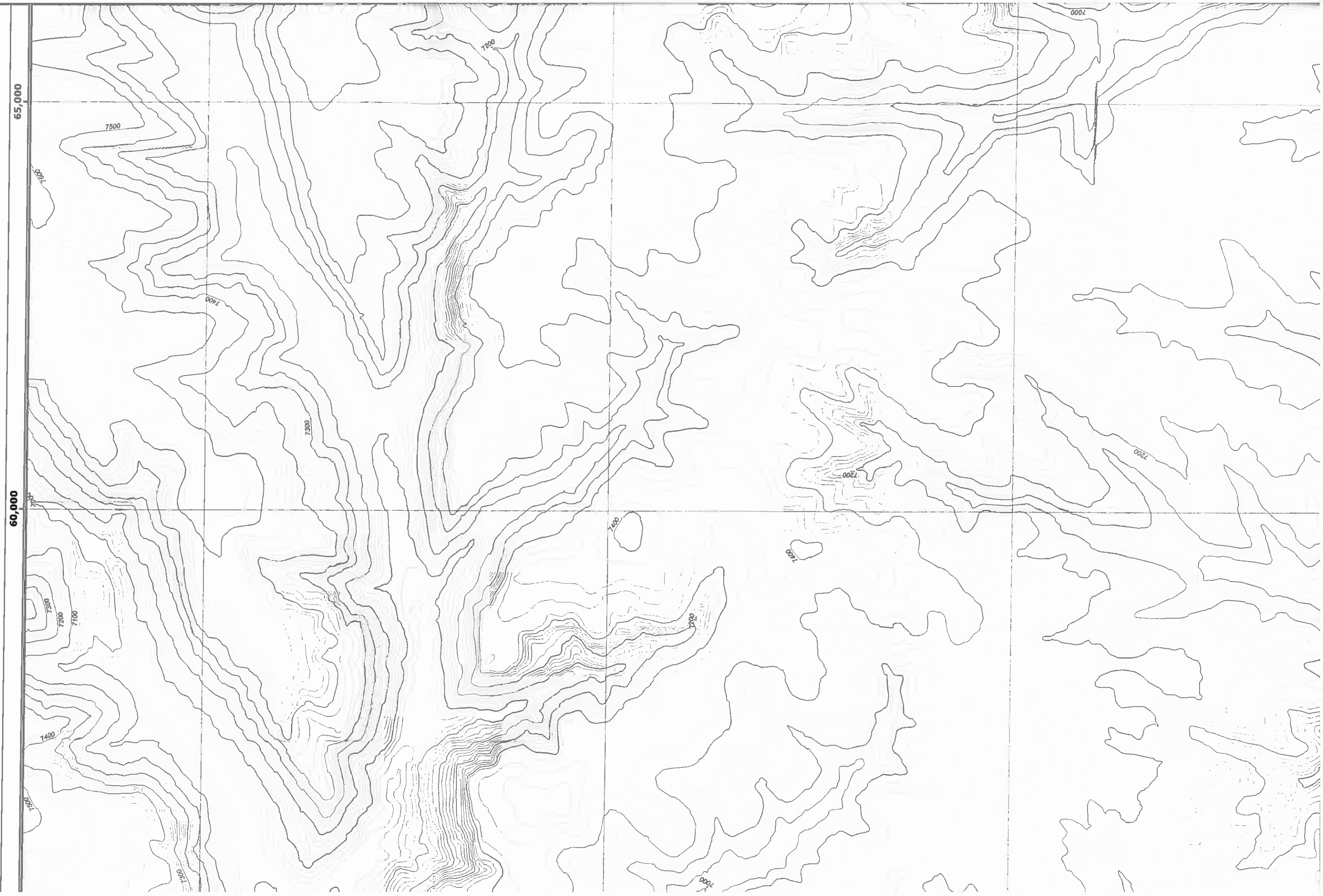
7100

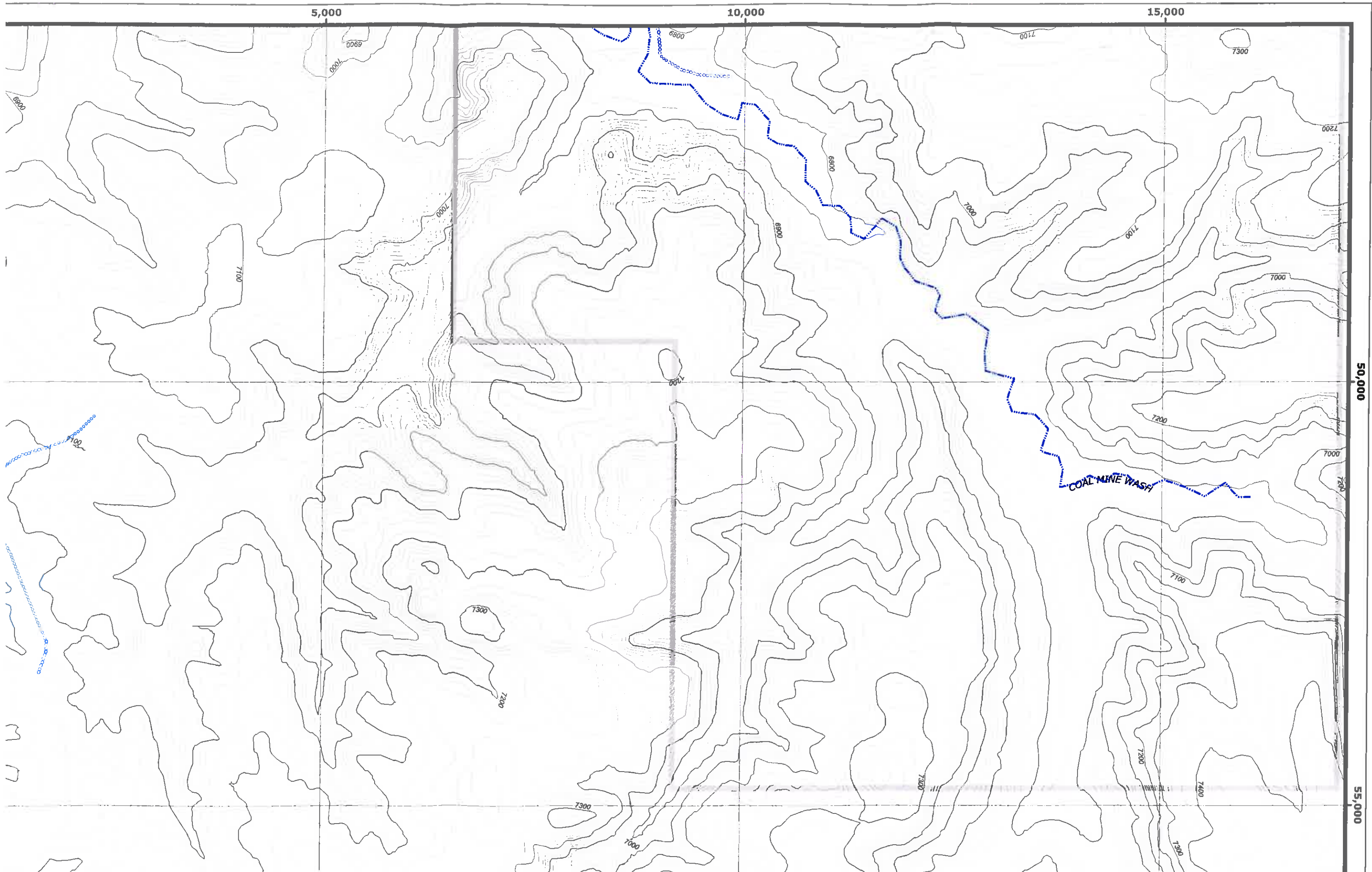
6800

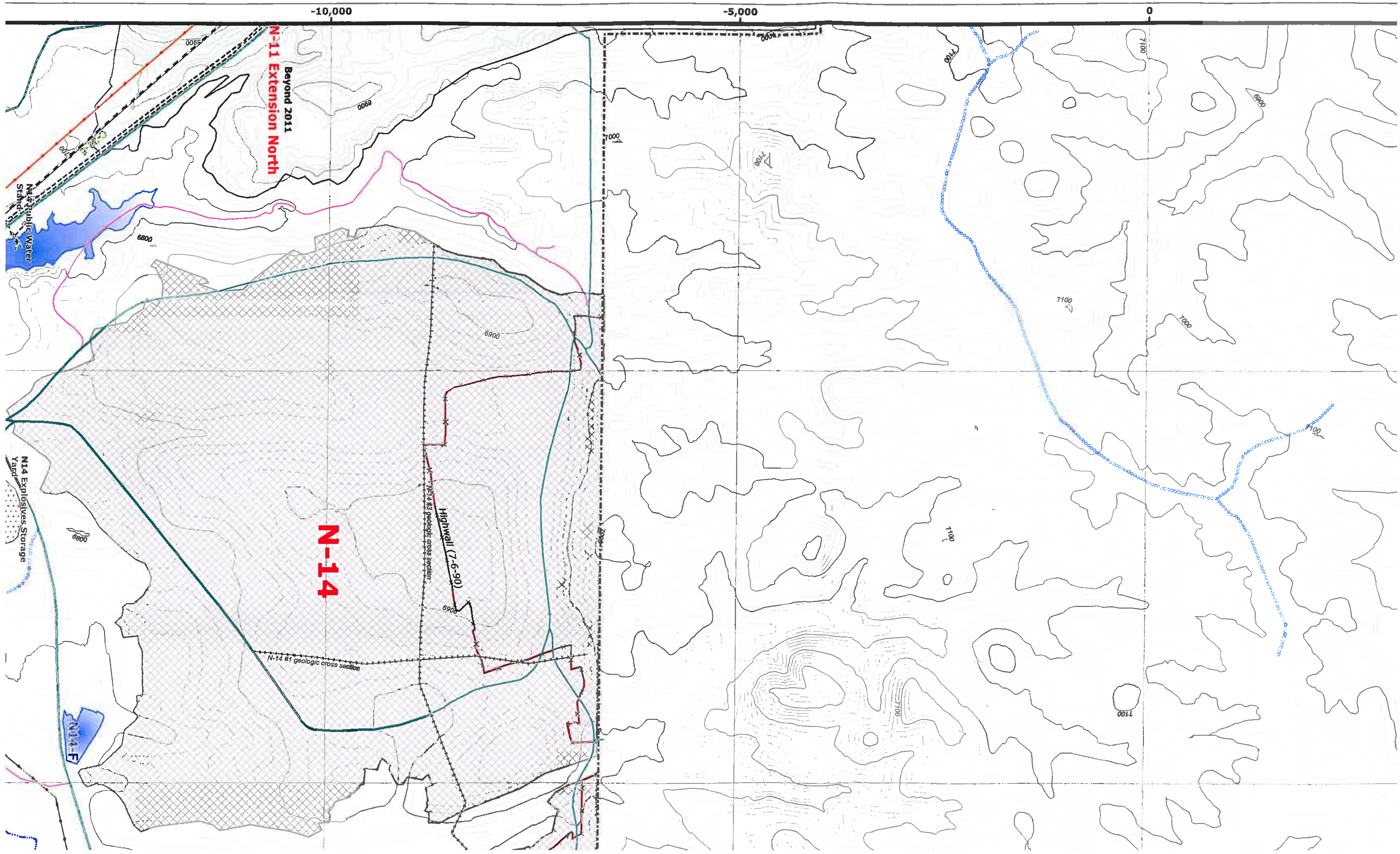
Highway (7-6-90)

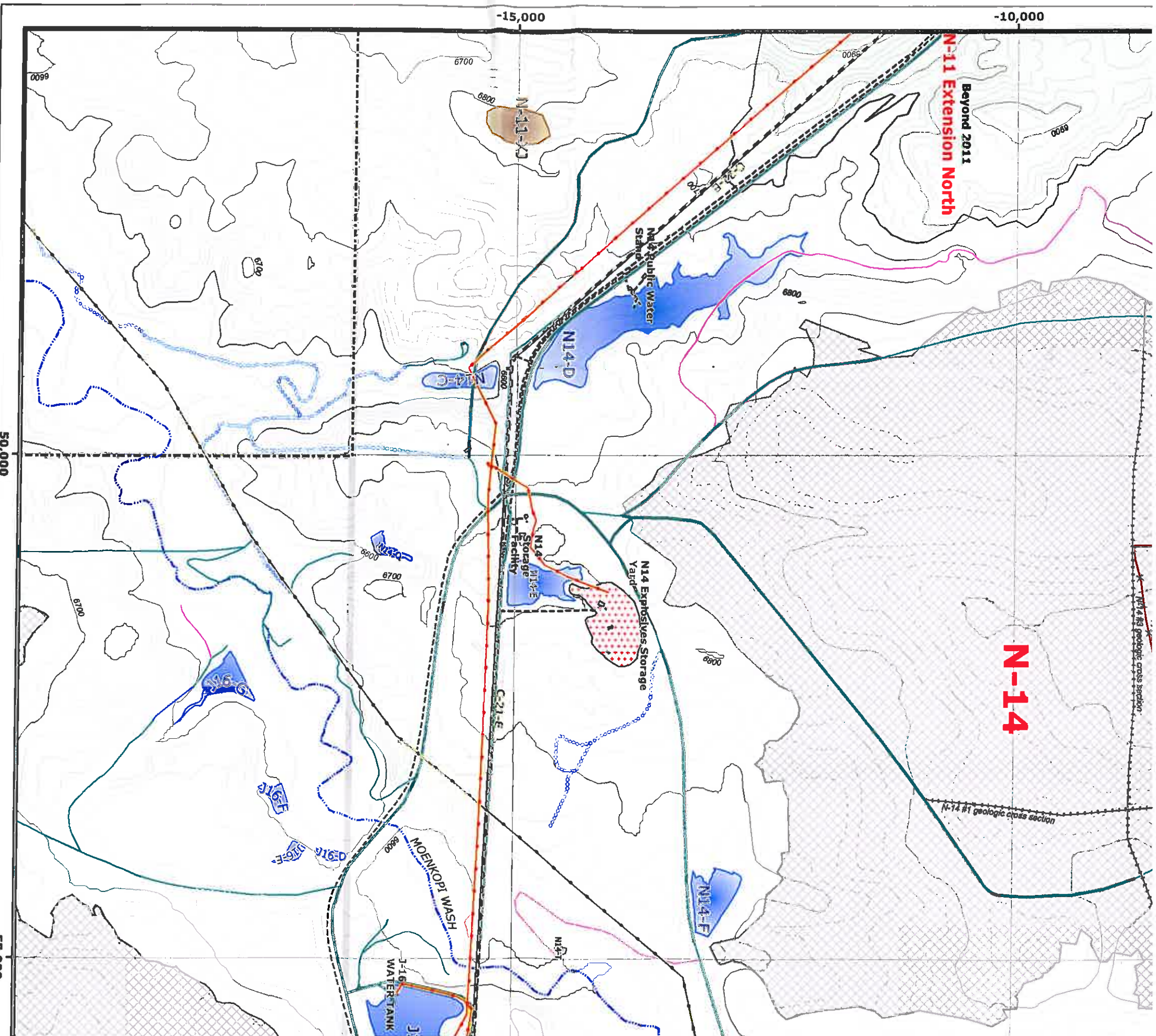
N-14E

N-14 #2 geologic cross

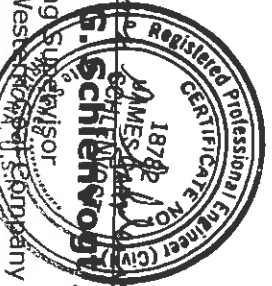








ENGINEER'S CERTIFICATION



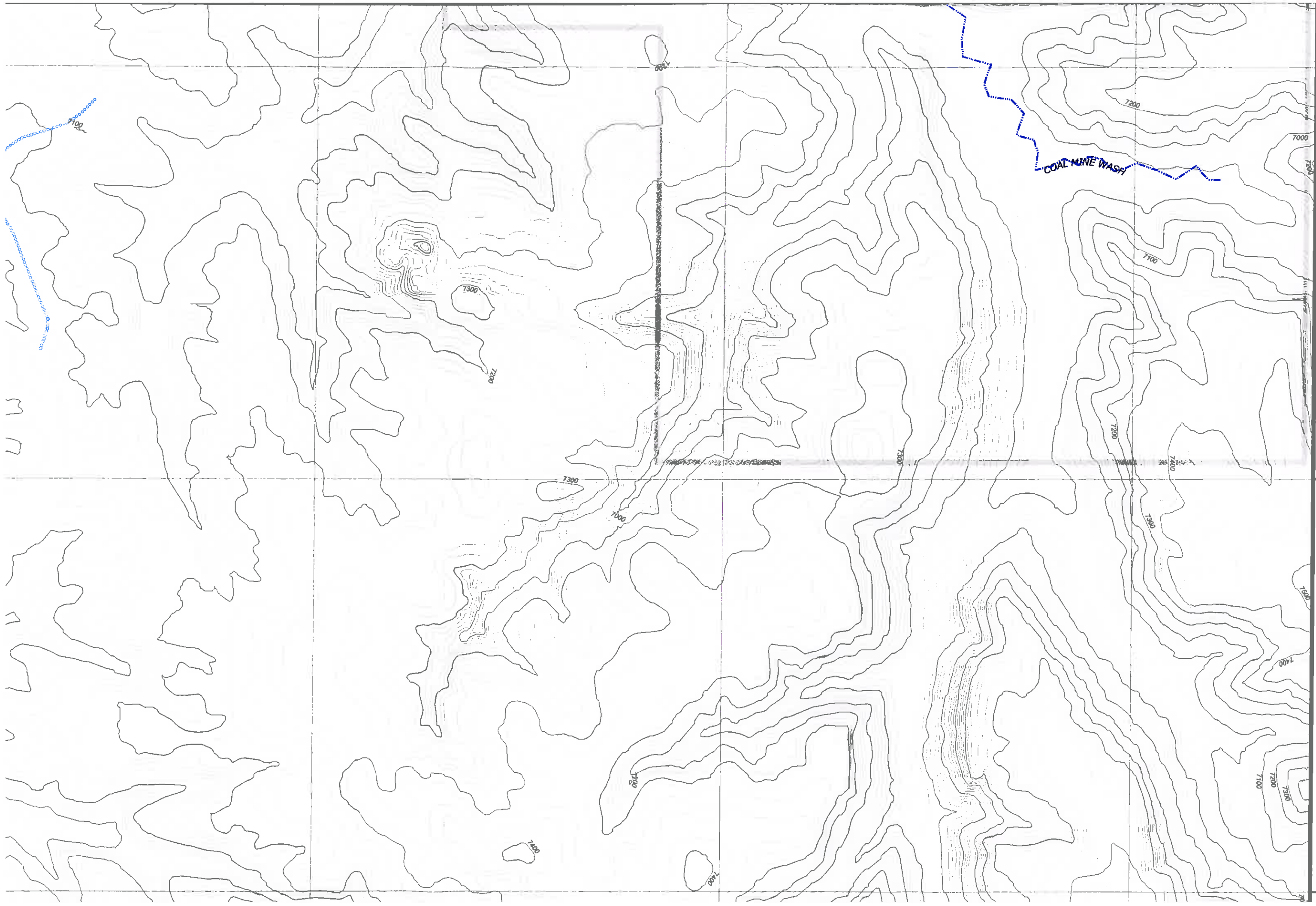
James G. Schiersopf
 Registered Professional Engineer (Civil)
 No. 18782
 State of New York
 Peabody West Virginia Company
 Supervisor
 Engineering Services

MAR 23 2007
 Date

MAP REVISIONS

CHK'D	DATE	DESCRIPTION
JGS	01-20-2004	5 Yr. Mineplan Rev.
JGS	06-05-2004	Powerline Rev.
JGS	01-14-2005	N-9 5 Yr. Mineplan Rev.
JGS	02-25-2005	Permit Renewal
JGS	06-15-2005	N-9 Facilities Rev.
JGS	06-15-2005	N-09 & N-06 Facilities Rev.
JGS	12-15-2005	N-09 Sequence Rev.
JGS	01-20-2006	OSM Response
GW	04-12-2006	Roads and TCP Revisions
JGS	07-12-2006	Support Facility Revisions
JGS/GW	03-21-2007	Feature Revisions / Software Upgrade

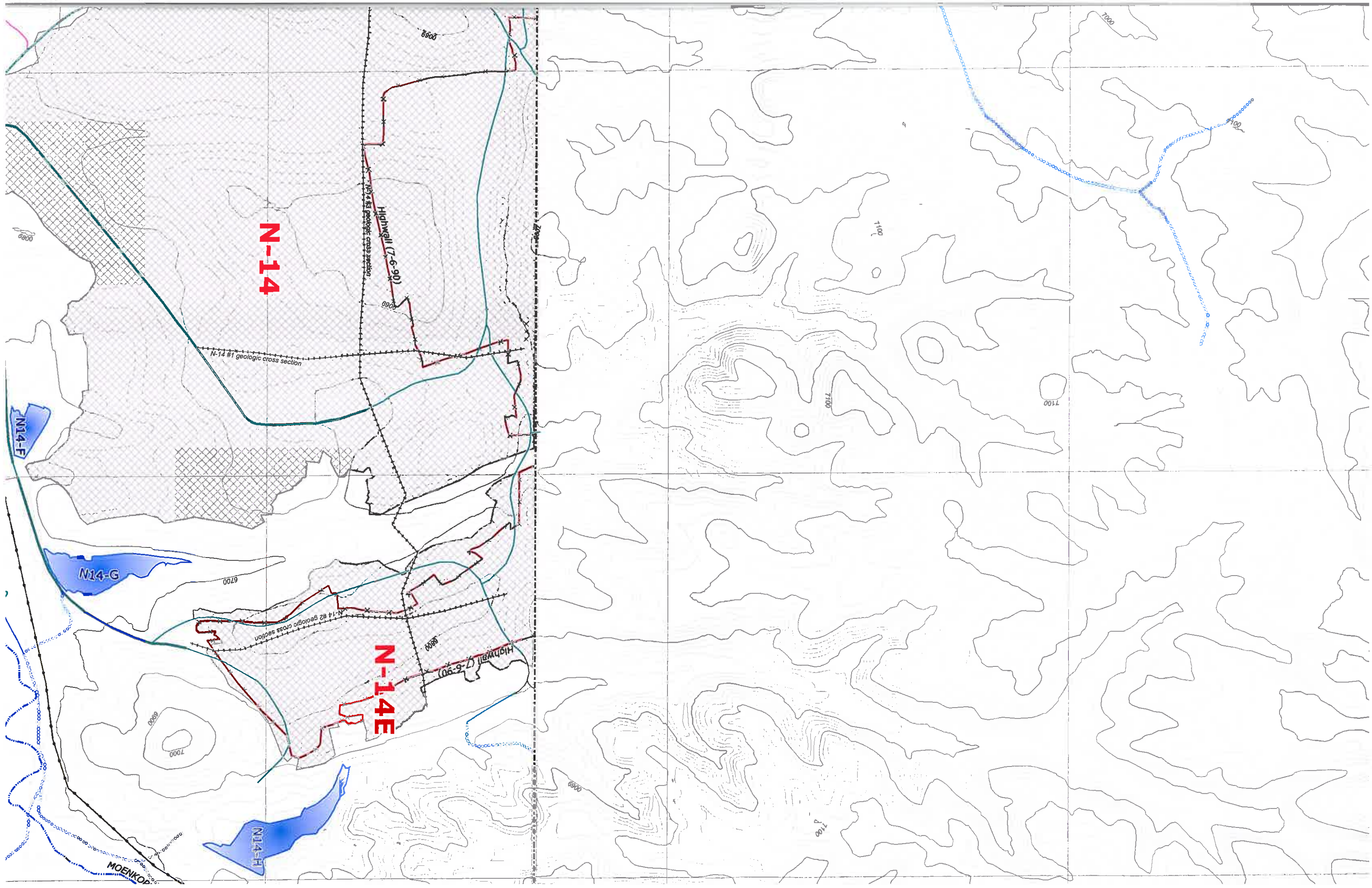




50,000

55,000

60,000



N-14

Highway (7-6-90)

N-14 #1 geologic cross section

N-14 #2 geologic cross section

N-14E

Highway (7-6-90)

N14-G

N14-H

N14-F

MOENKOP

6600

6600

6700

6800

7000

6800

7100

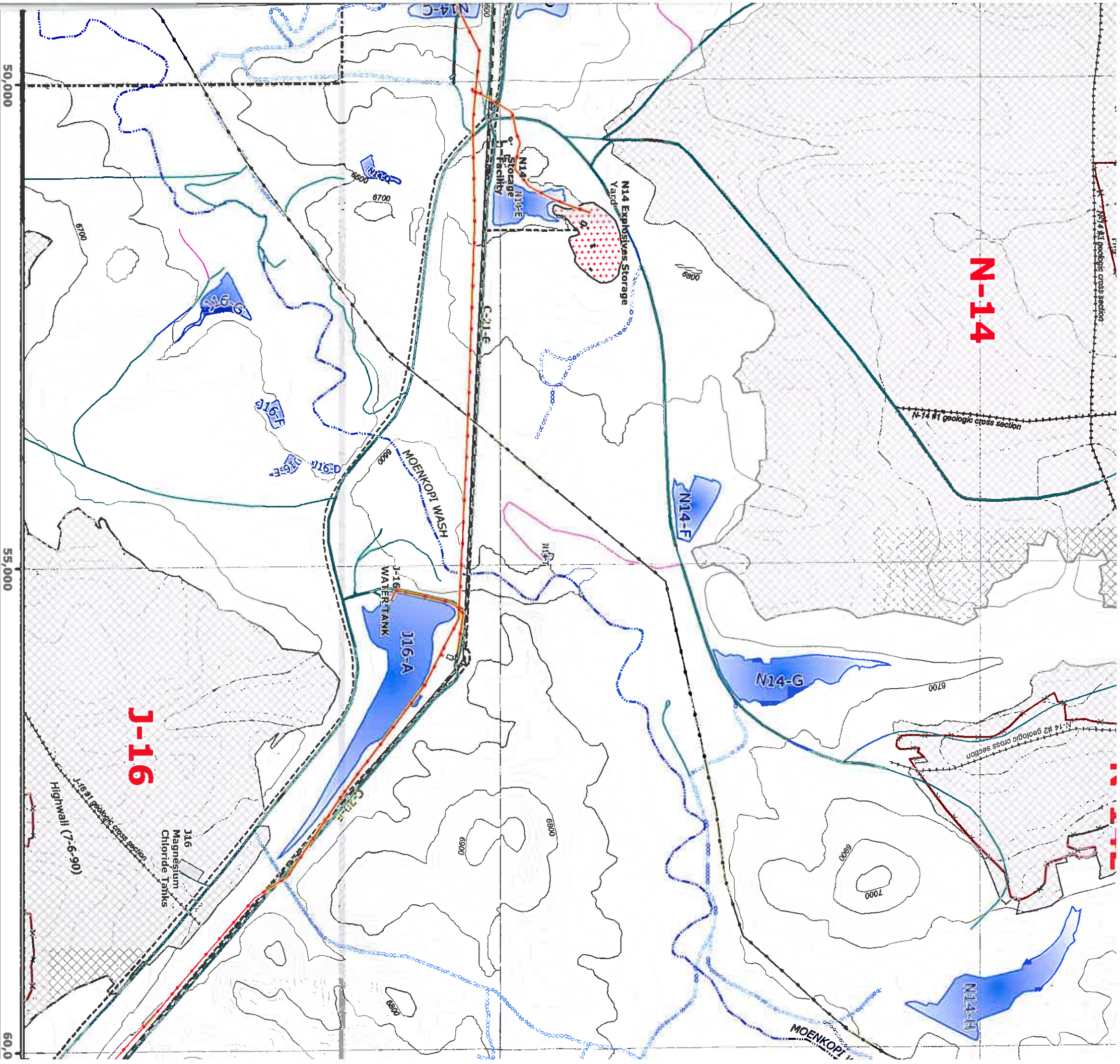
7100

7100

7100

7000

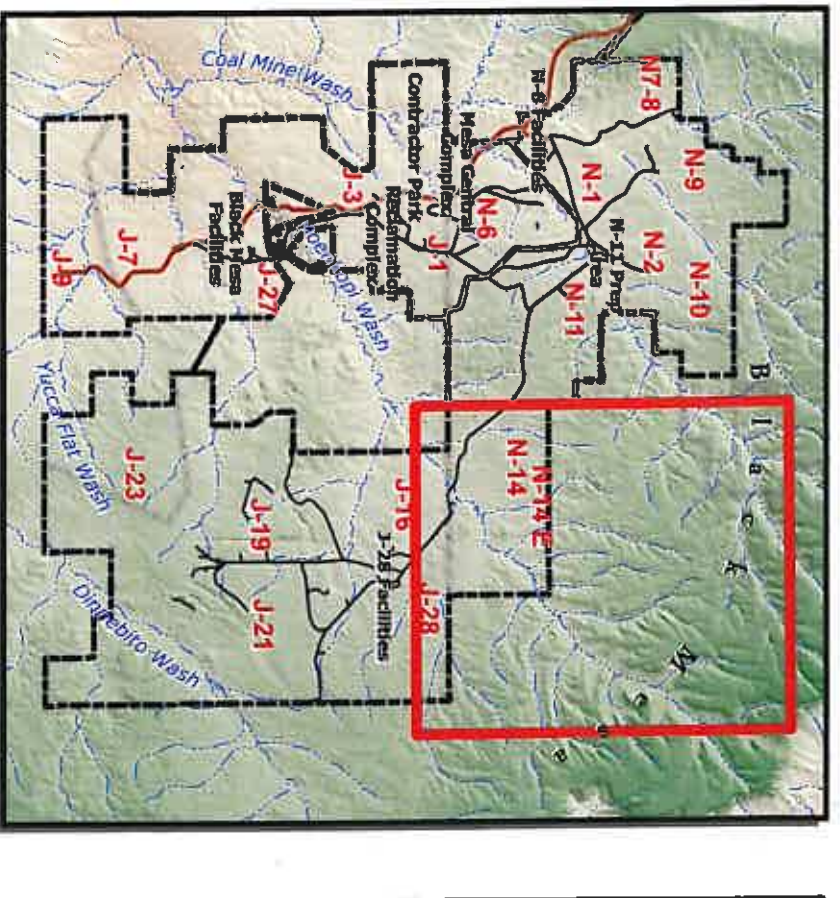
7000



ACTION

MAP REVISIONS

CHK'D	DATE	DESCRIPTION
JGS	01-20-2004	5 Yr. Mineplan Rev.
JGS	06-05-2004	Powerline Rev.
JGS	01-14-2005	N-9 5 Yr. Mineplan Rev.
JGS	02-25-2005	Permit Renewal
JGS	06-15-2005	N-9 Facilities Rev.
JGS	06-15-2005	N-09 & N-06 Facilities Rev.
JGS	12-15-2005	N-09 Sequence Rev.
JGS	01-20-2006	OSM Response
GW	04-12-2006	Roads and TCP Revisions
JGS	07-12-2006	Support Facility Revisions
JGS/GW	03-21-2007	Feature Revisions / Software Upgrade



MAR 23 2007
Date