

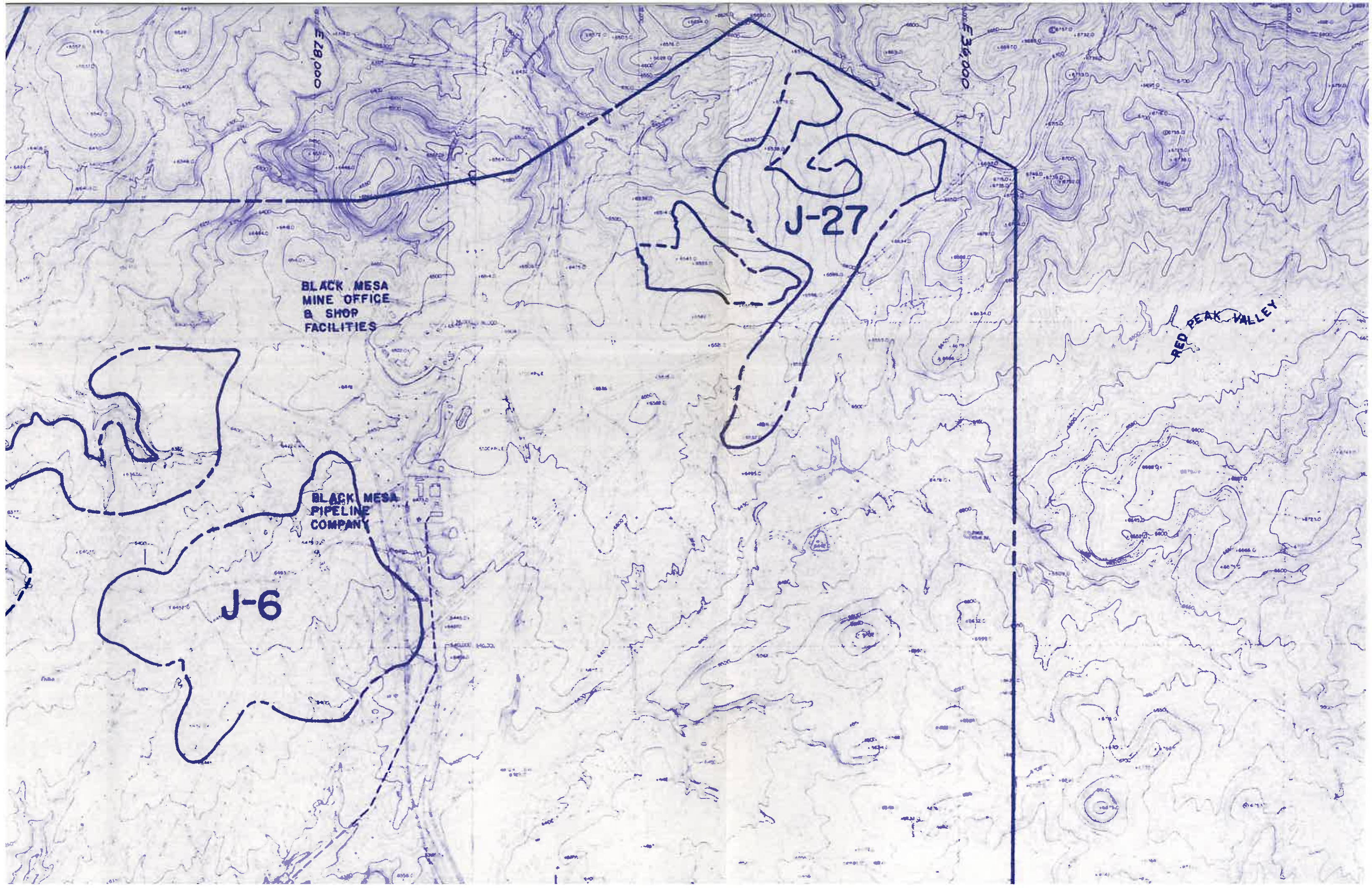
BLACK MESA
MINE OFFICE
& SHOP
FACILITIES

BLACK MESA
PIPELINE
COMPANY

J-27

J-6

RED PEAK VALLEY



J-14

J-13

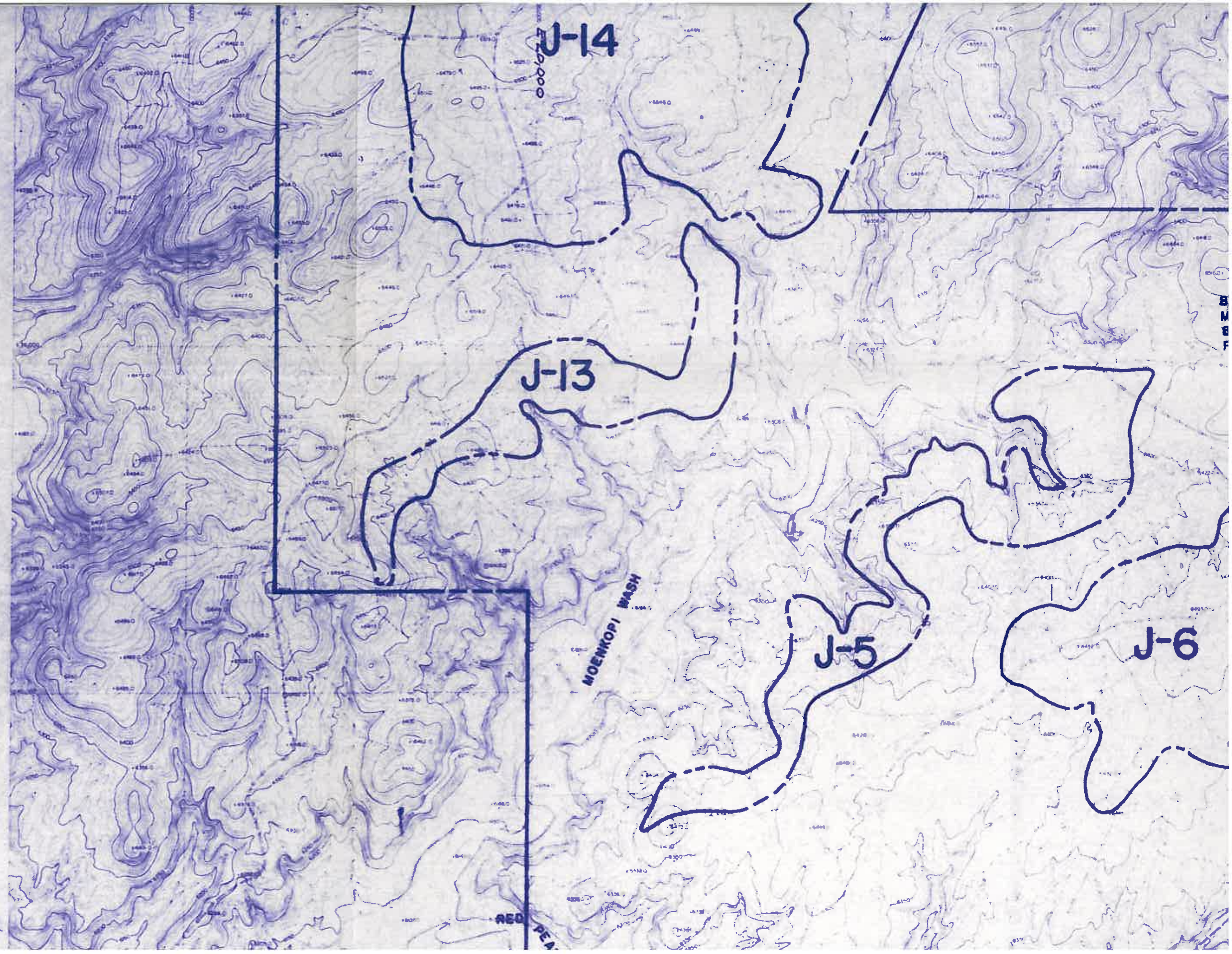
J-5

J-6

S 40,000

MOENKOPI WASH

RED FEEL



BLACK MESA
MINE OFFICE
& SHOP
FACILITIES

BLACK MESA
PIPELINE
COMPANY

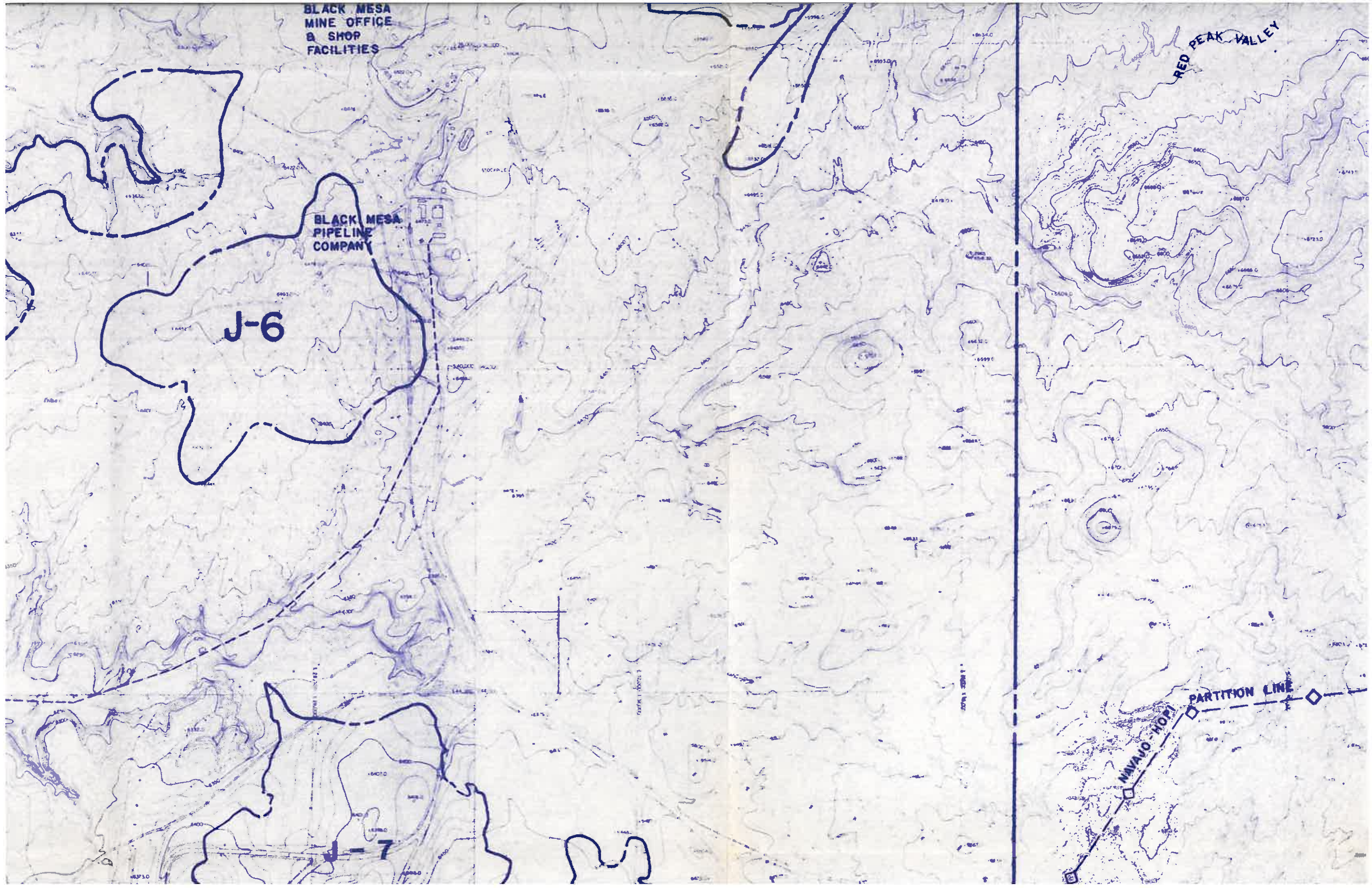
J-6

J-7

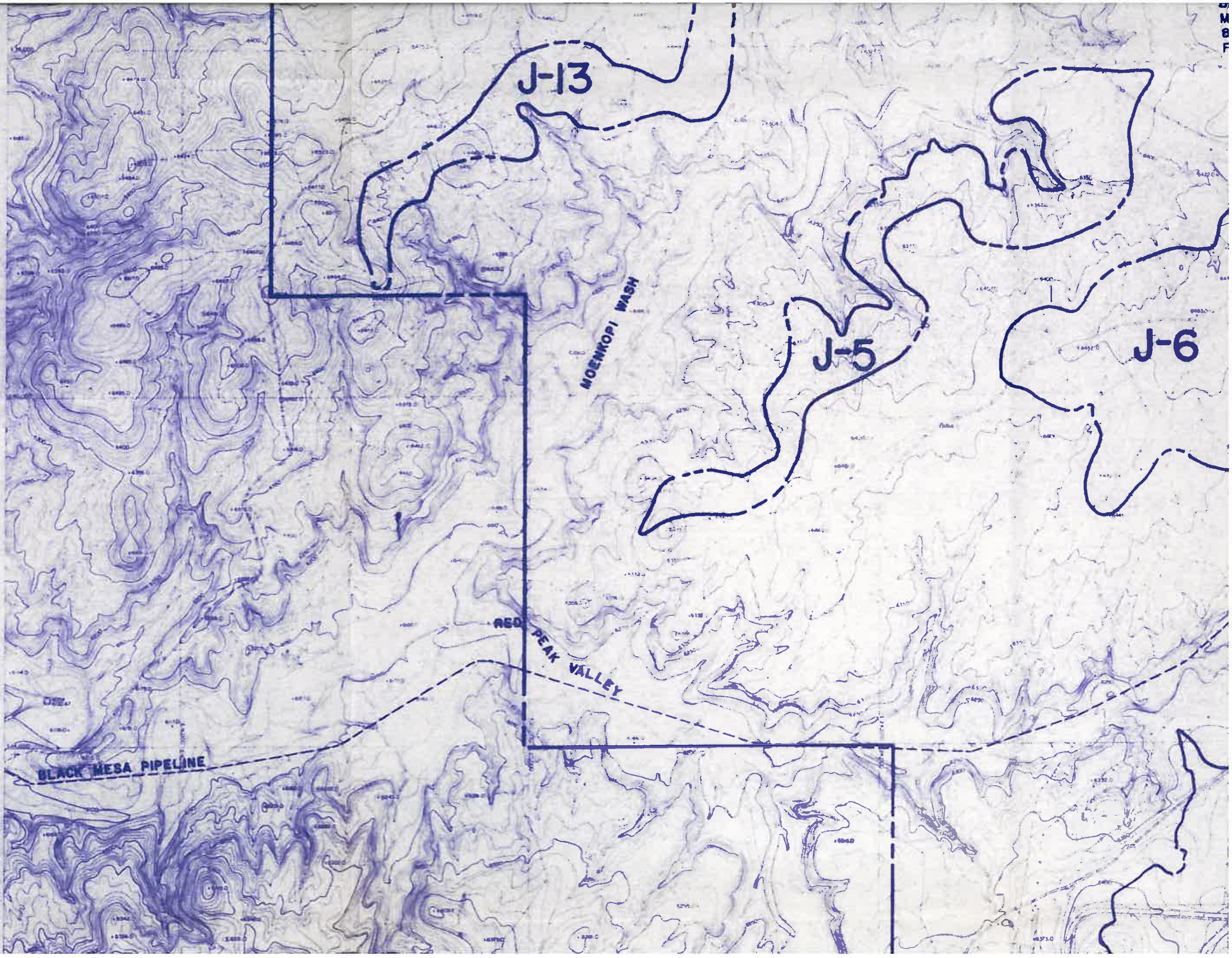
RED PEAK VALLEY

NAVAJO HOPI

PARTITION LINE



S 40,000



J-13

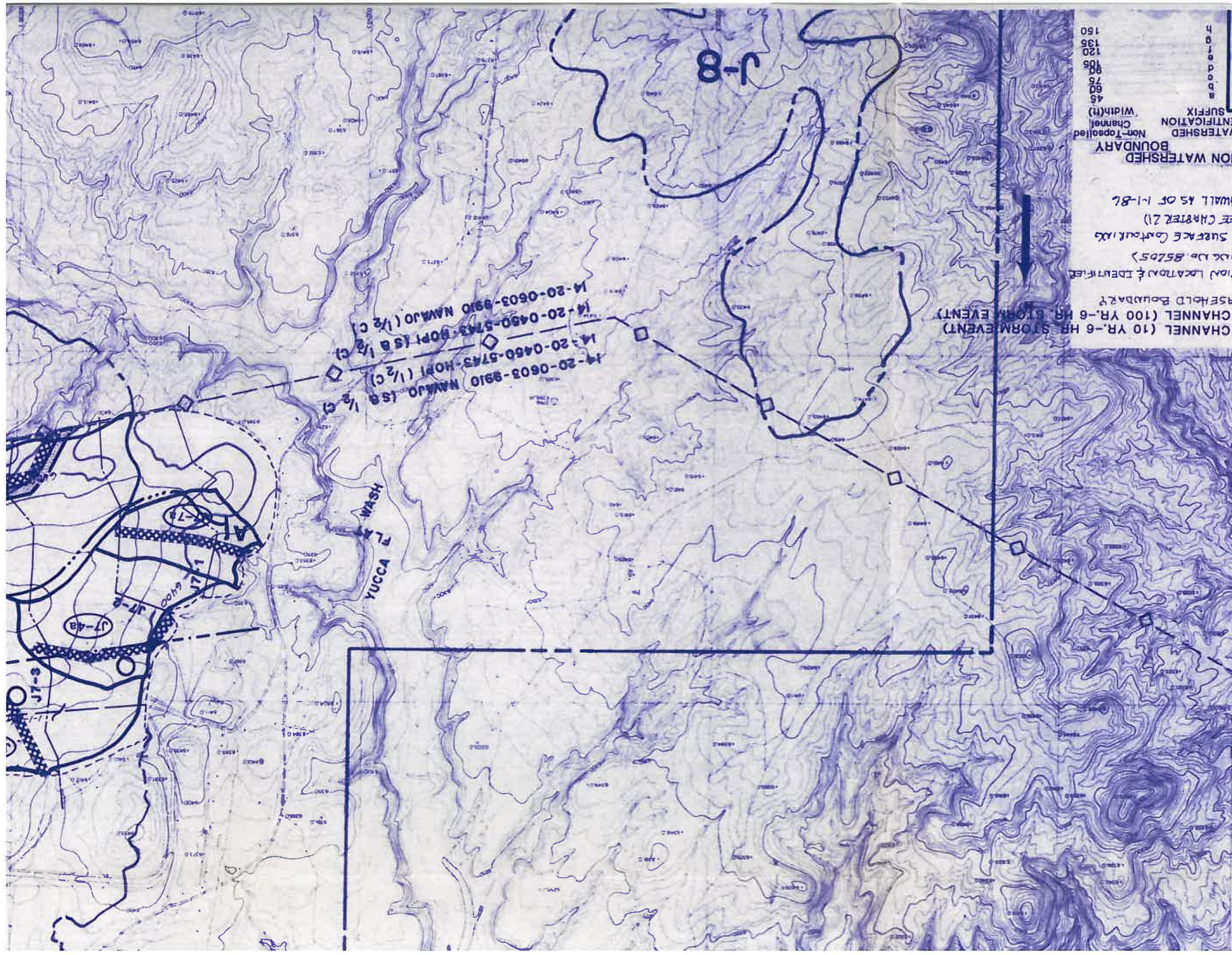
J-5

J-6

MOENKOPI WASH

RED PEAK VALLEY

BLACK MESA PIPELINE



14-20-0603-9910 NAMUJO (1/2 C)
 14-20-0450-5743 HOP1 (1/2 C)
 14-20-0450-5743 HOP1 (1/2 C)
 14-20-0603-9910 NAMUJO (1/2 C)

WILDLIFE LEGEND

○ Field Trial Locations
 □ Drainage Planting Locations
 --- Corridor Locations (Approx.)

J7-3a
 IDENTIFICATION (SEEDDRAWING 88350)
 WATERSHED IDENTIFICATION SUFFIX
 Non-Topsoiled Channel Width(ft)
 45
 60
 75
 90
 105
 120
 135
 150

J7-9
 CROSS SECTION LOCATION & IDENTIFIER
 FARMER LEASEHOLD BOUNDARY
 DRAINAGE CHANNEL (10 YR-6 HR STORM EVENT)
 DRAINAGE CHANNEL (100 YR-6 HR STORM EVENT)
 POST MINING SURFACE CONTOUR LINES
 EXTENT (SEE CHAPTER 2)
 MIDWIND HIGHWALL AS OF 1-1-87

RECLAMATION WATERSHED BOUNDARY

50,000

PEABODY COAL COMPANY BLACK MESA-KAYENTA MINE P.O. BOX 625 KAYENTA, ARIZONA 86033		KEY WILDLIFE HABITAT AREA LOCATION MAP		DWG. NO. 85321
		AREA LOCATION MAP		SHEET NO. 3 of 3
		WILDLIFE RESPONSES		DRAWN BY BD
		OSMRE RESPONSES		DATE 12/85
		POSTMINING WATERSHEDS & CHANNELS		SCALE 1"=1000'
		REVISION DESCRIPTION		C.I. 10'
1	BD	1-20-88	WILDLIFE RESPONSES	
2	JH.R.J.G.	12-4-87	OSMRE RESPONSES	
3	D.V.M.	12-17-86	POSTMINING WATERSHEDS & CHANNELS	
		DATE		
		DRAWN BY		
		SHEET NO.		
		DWG. NO.		

