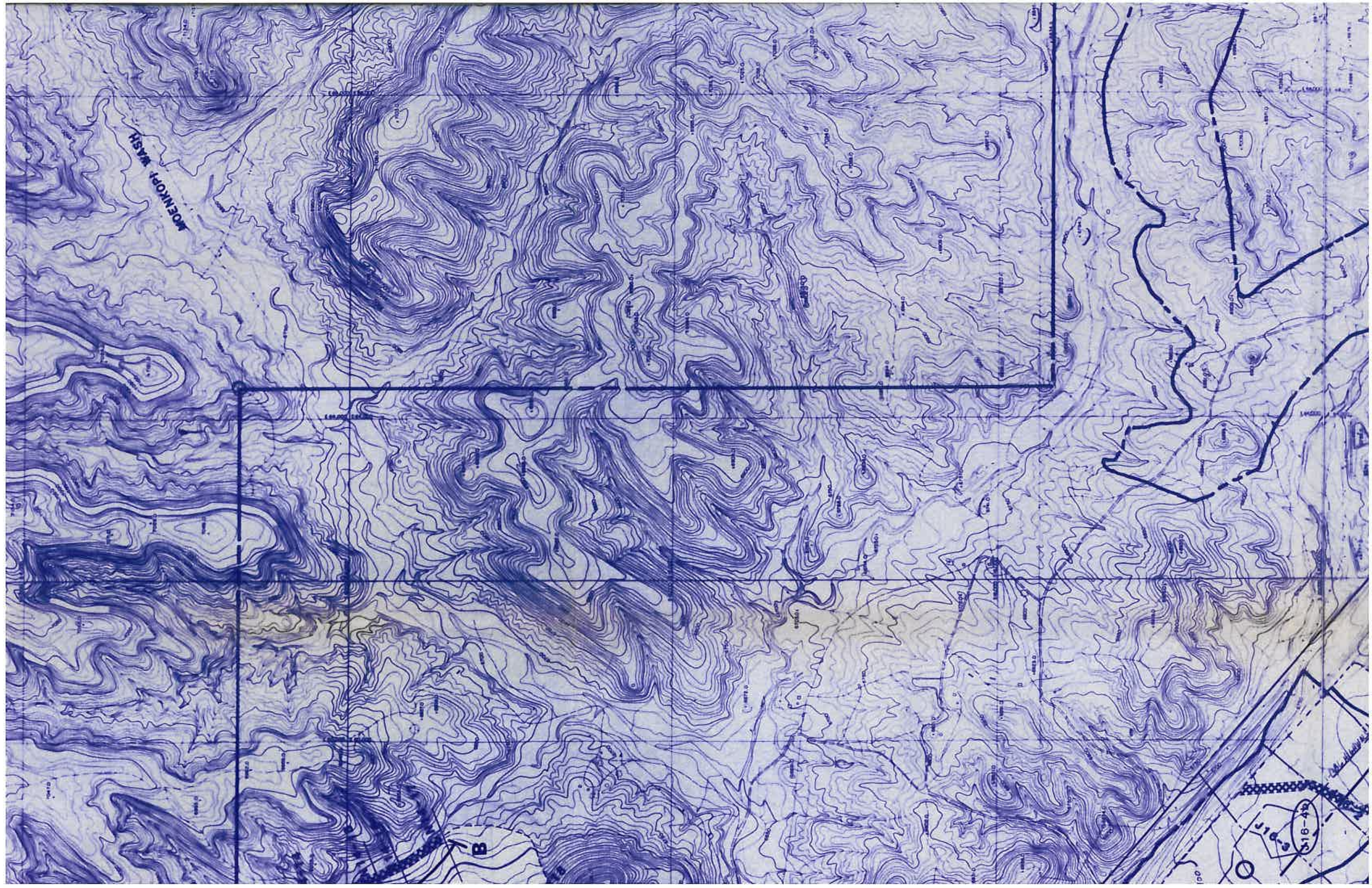


PEABODY COAL COMPANY
 BLACK MESA - KAYENTA MINE
 P.O. BOX 625
 KAYENTA, ARIZONA 86033

**KEY WILDLIFE HABITAT
 AREA LOCATION MAP**

DRAWN BY: J.G.S.		DATE: 12-14-86	POSTMINING WATERSHEDS & CHANNELS
CHECKED BY: R.J.G.		DATE: 12-14-87	OSMRE RESPONSES
DRAWN BY: B.D.		DATE: 2-2-88	WILDLIFE RESPONSES
DWG NO:	85321	DATE:	11-88
SHEET NO:	2 of 3	SCALE:	1" = 1000'
DRAWN BY:		C.L.	10'
DRAWN BY:	APP'D BY:	DATE:	REVISION DESCRIPTION

NOTE: POSTMINING CONTOURS @ C.J. - 40'

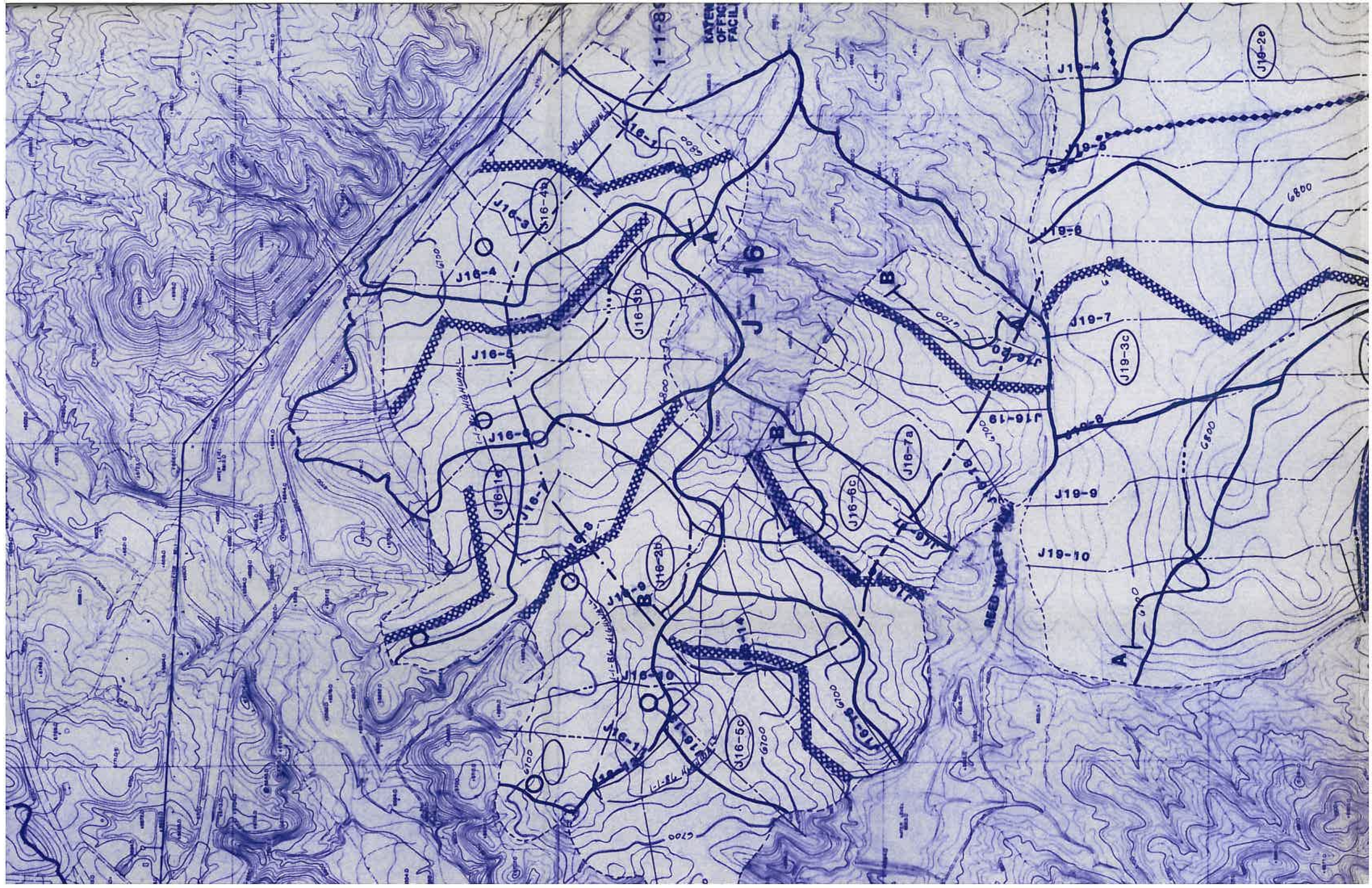


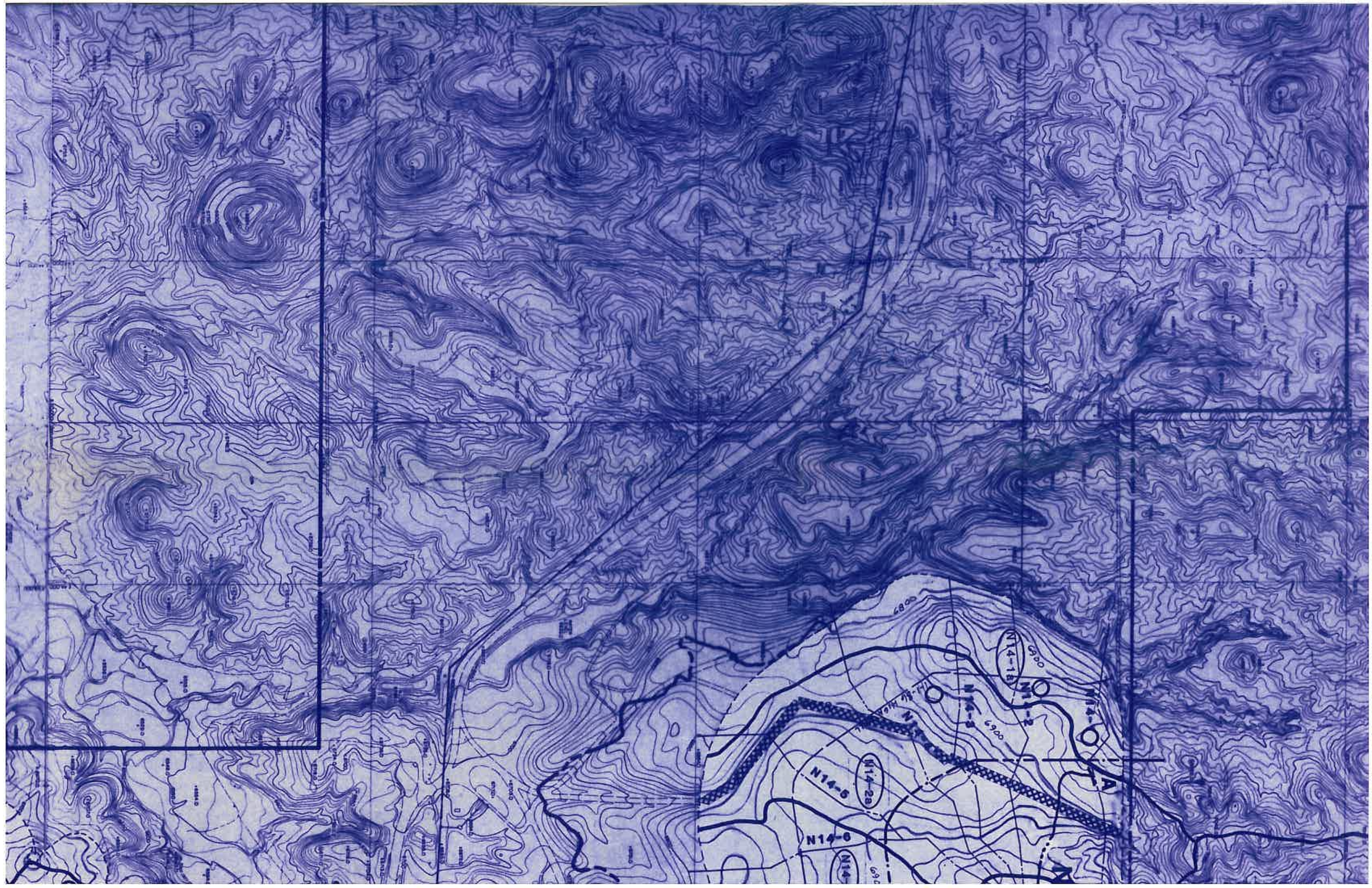


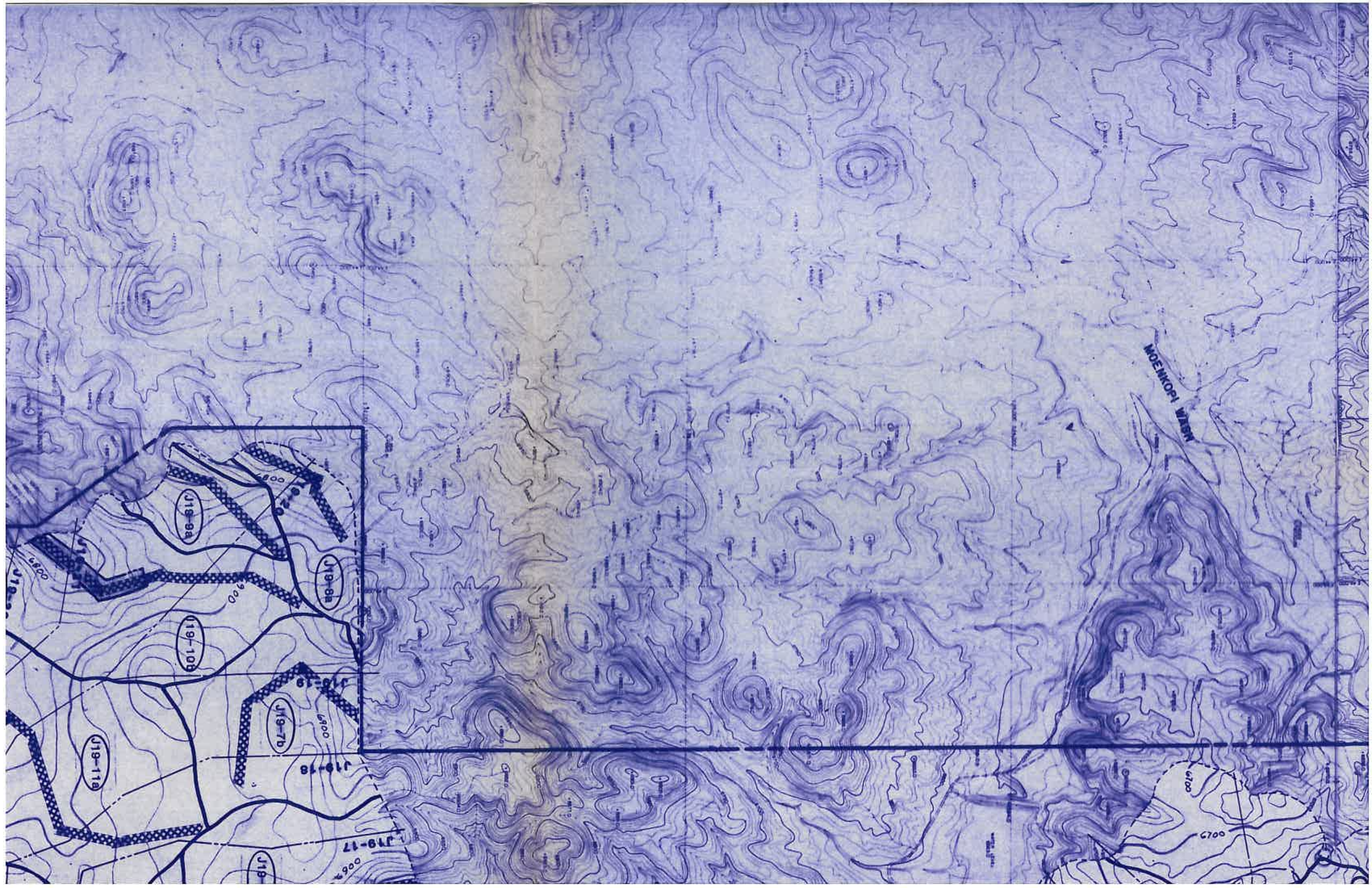
LOCAL DATUM: MEAN SEA LEVEL



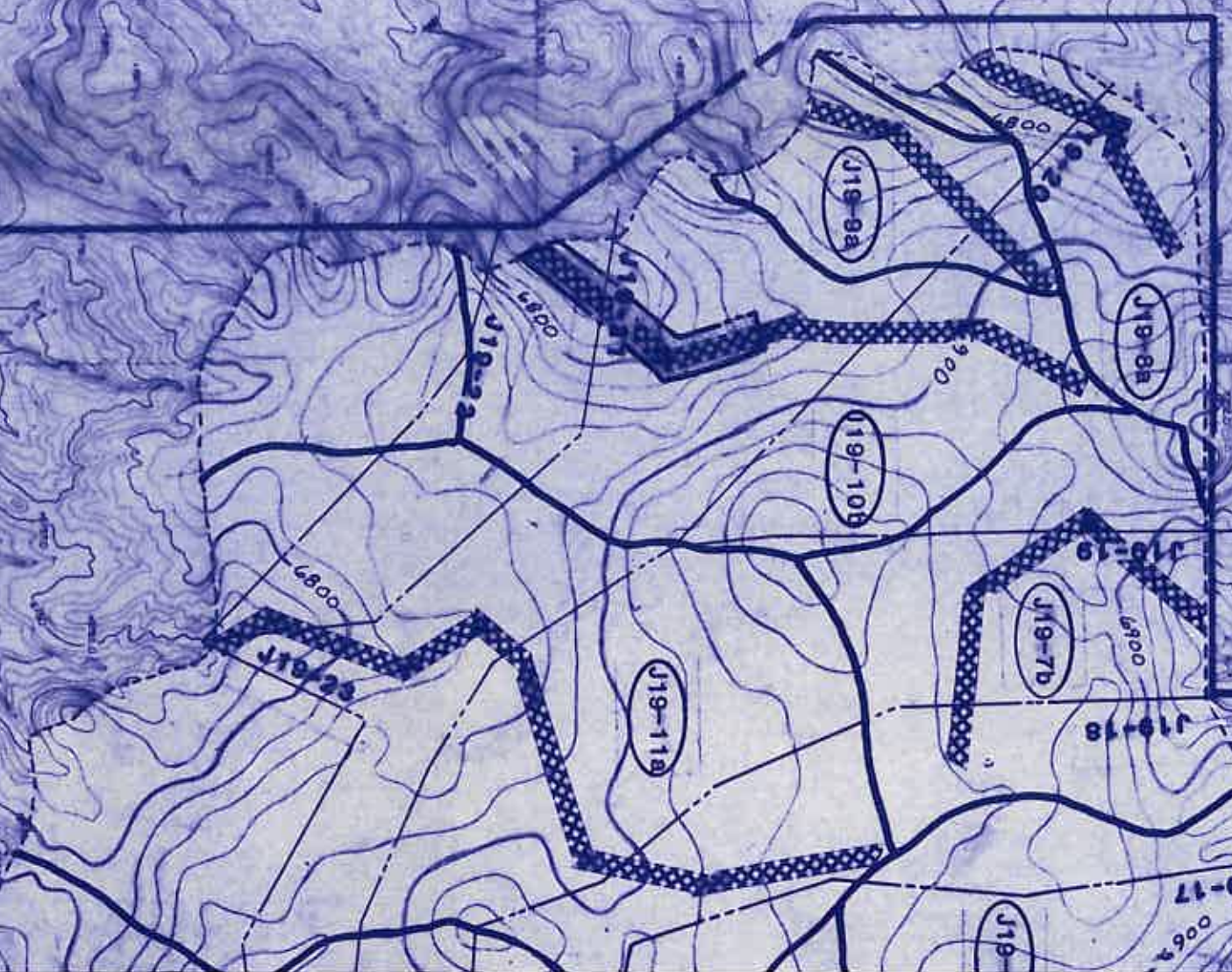




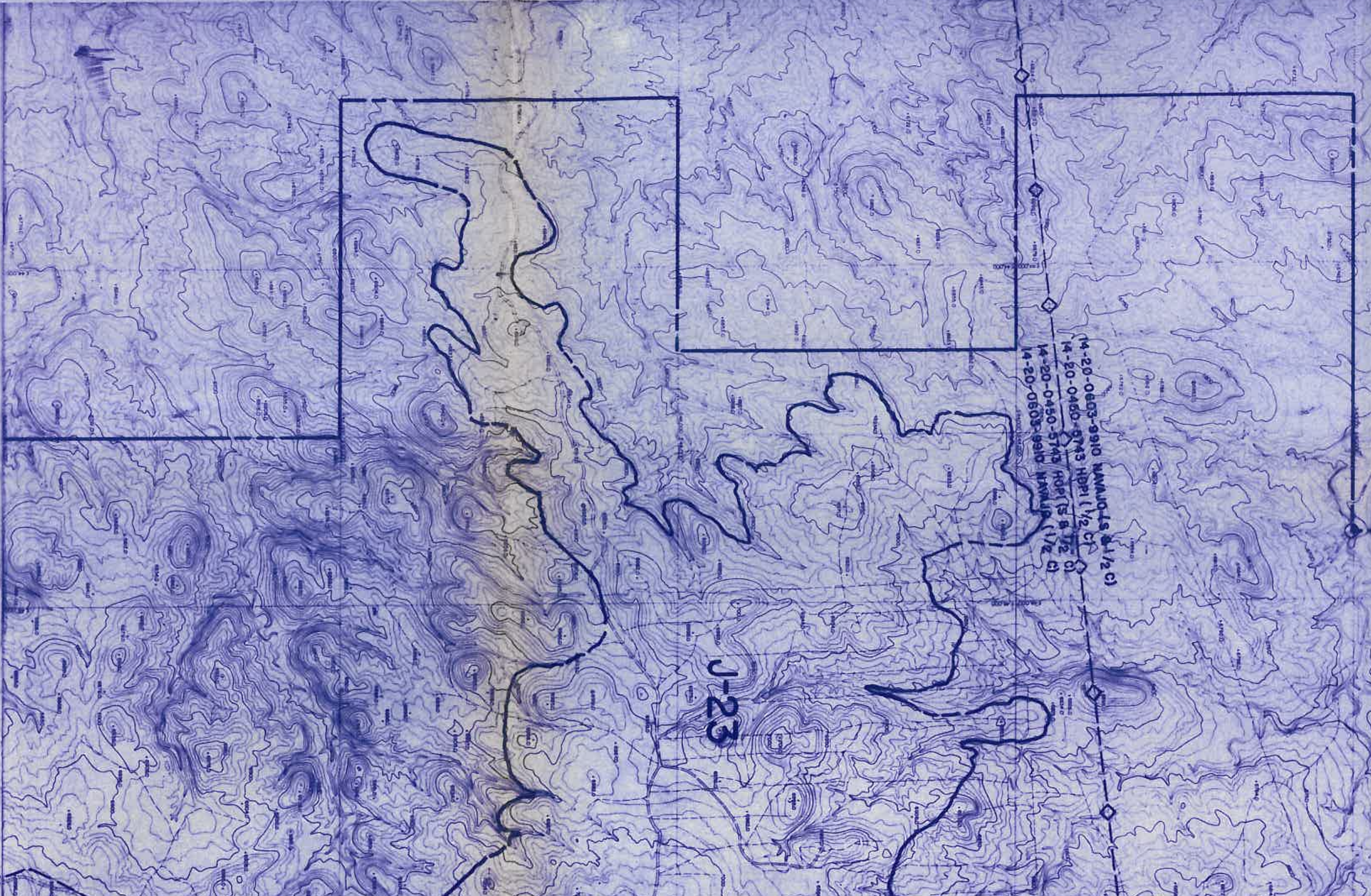


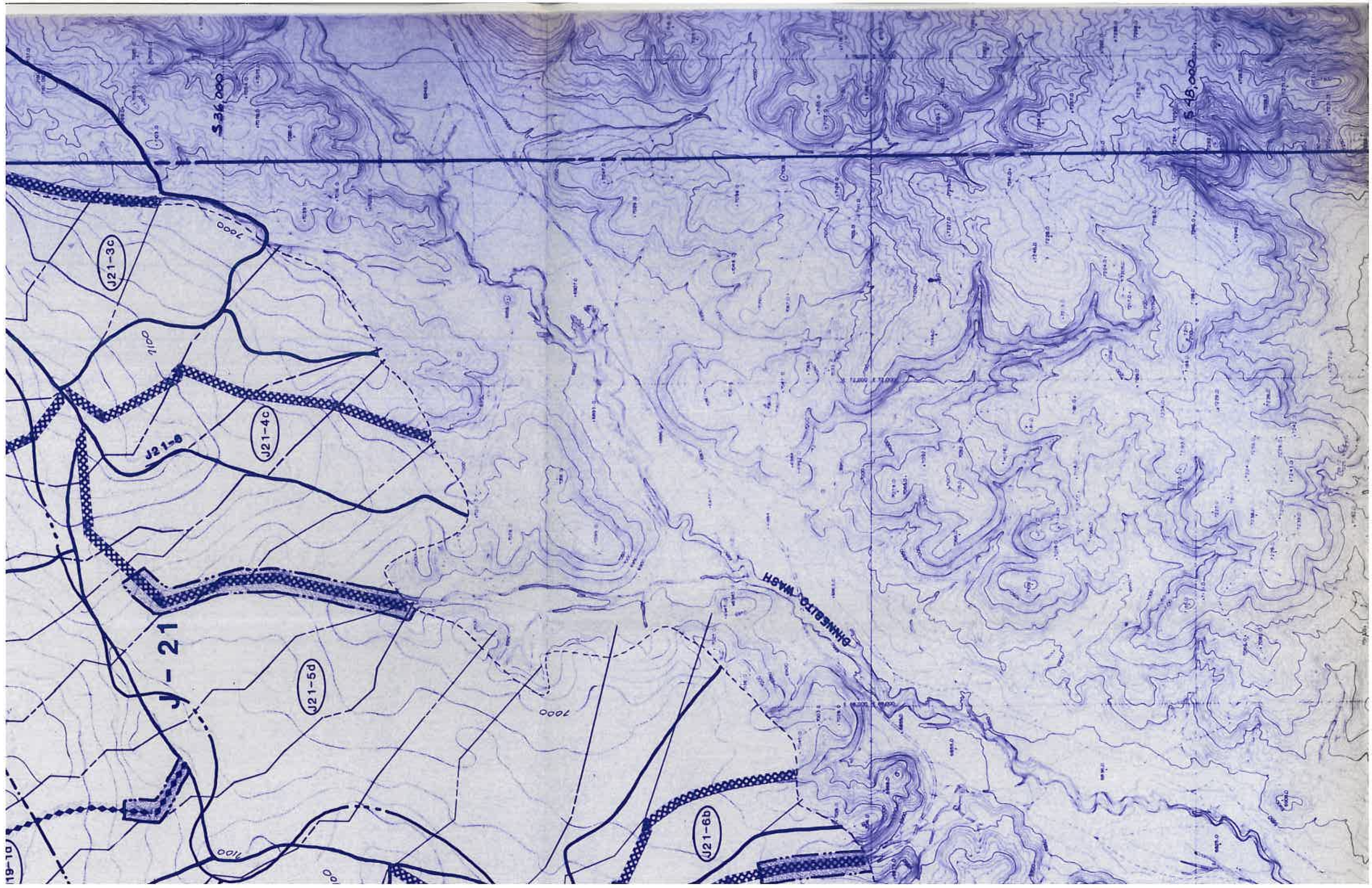


14-20-0603-9910 NAWAULTS 2 1/2 C)
14-20-0450-5743 HDP1 (1/2 C)
14-20-0450-5743 HDP (S & 1/2 C)
14-20-0603-9910 NAWAULTS (1/2 C)



J19-17
0069





536,000

546,000

J21-3C

J21-4C

J21-5d

J21-6b

1100

J21-8

J-21

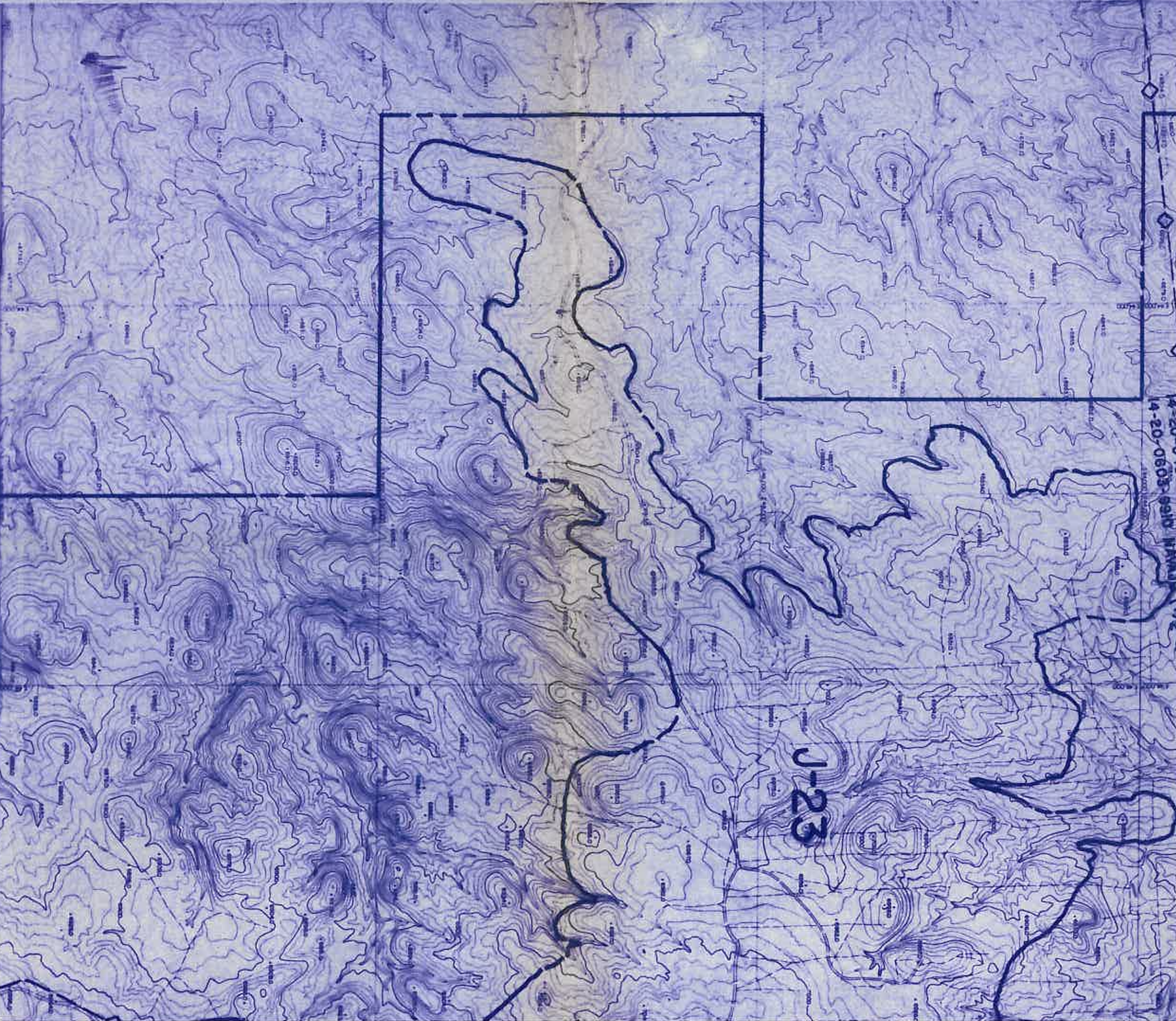
GHNNEALTO WASH

7000

7000

7000

19-10



- DRAINAGE CHANNEL (10 YR.-6 HR. STORM EVENT)
- DRAINAGE CHANNEL (100 YR.-6 HR. STORM EVENT)
- PARABODY LEASEHOLD BOUNDARY
- CROSS SECTION LOCATION IDENTIFIER (SEE DRAWING No. 85205)
- POSTMINING SURFACE CONTOURING EXTENT (SEE CHAPTER 21)
- MINING HIGHWALL AS OF 1-1-86

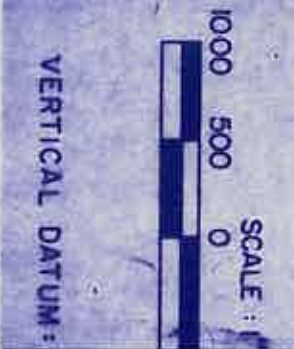
RECLAMATION WATERSHED BOUNDARY

WATERSHED No. IDENTIFICATION
(SEE DRAWING 85360)

WATERSHED IDENTIFICATION
SUFFIX

Non-Topsolled
Channel Width (ft.)

- WILDLIFE LEGEND**
- Corridor Locations (Approx.)
 - Drainage Planting Locations
 - Field Trail Locations



(21-1b)

A B

14-20-0753-9910 HWALL
14-20-0603-9910 HWALL

J-23





J-28

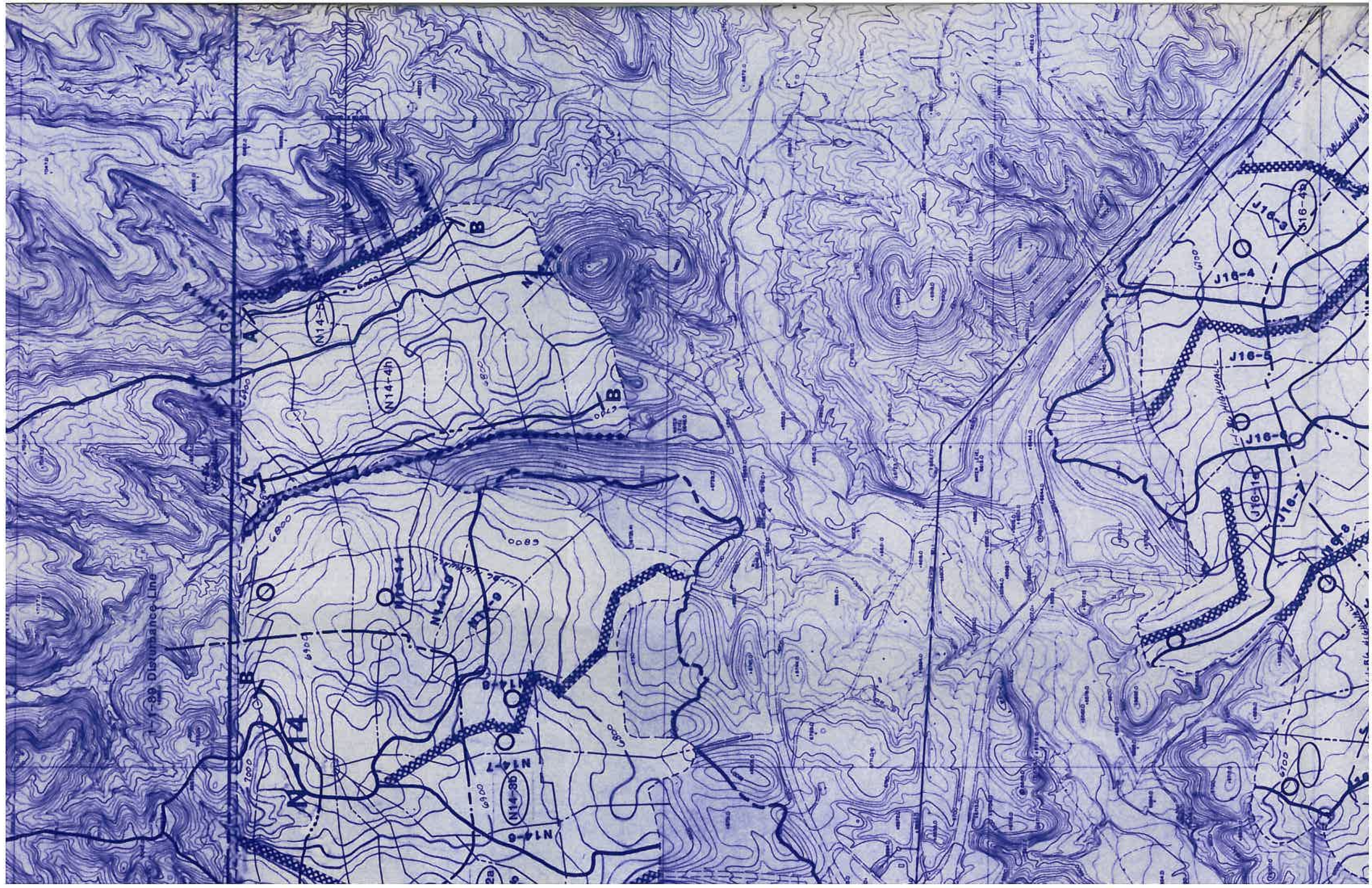
52400

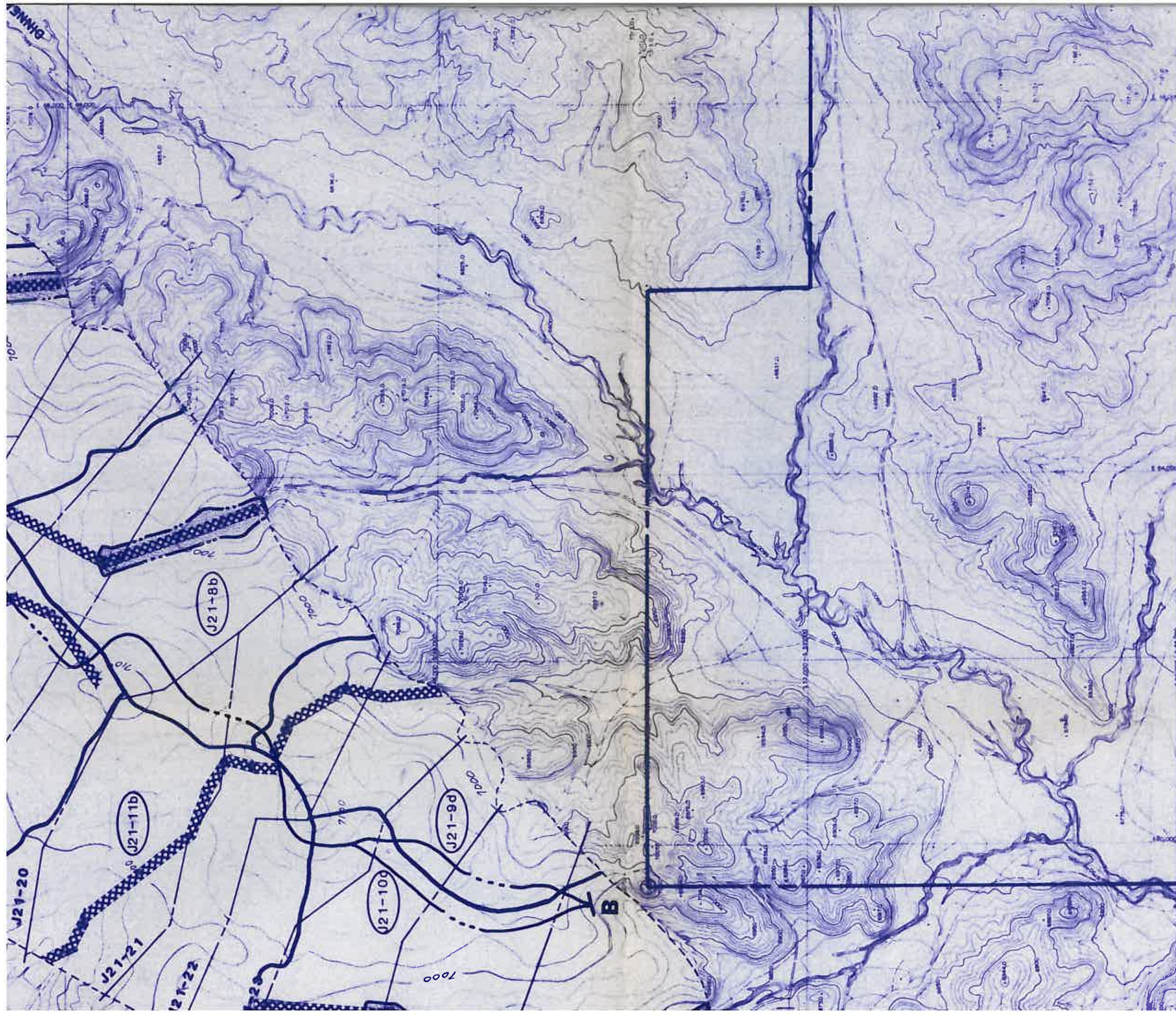
52000

Dance Line

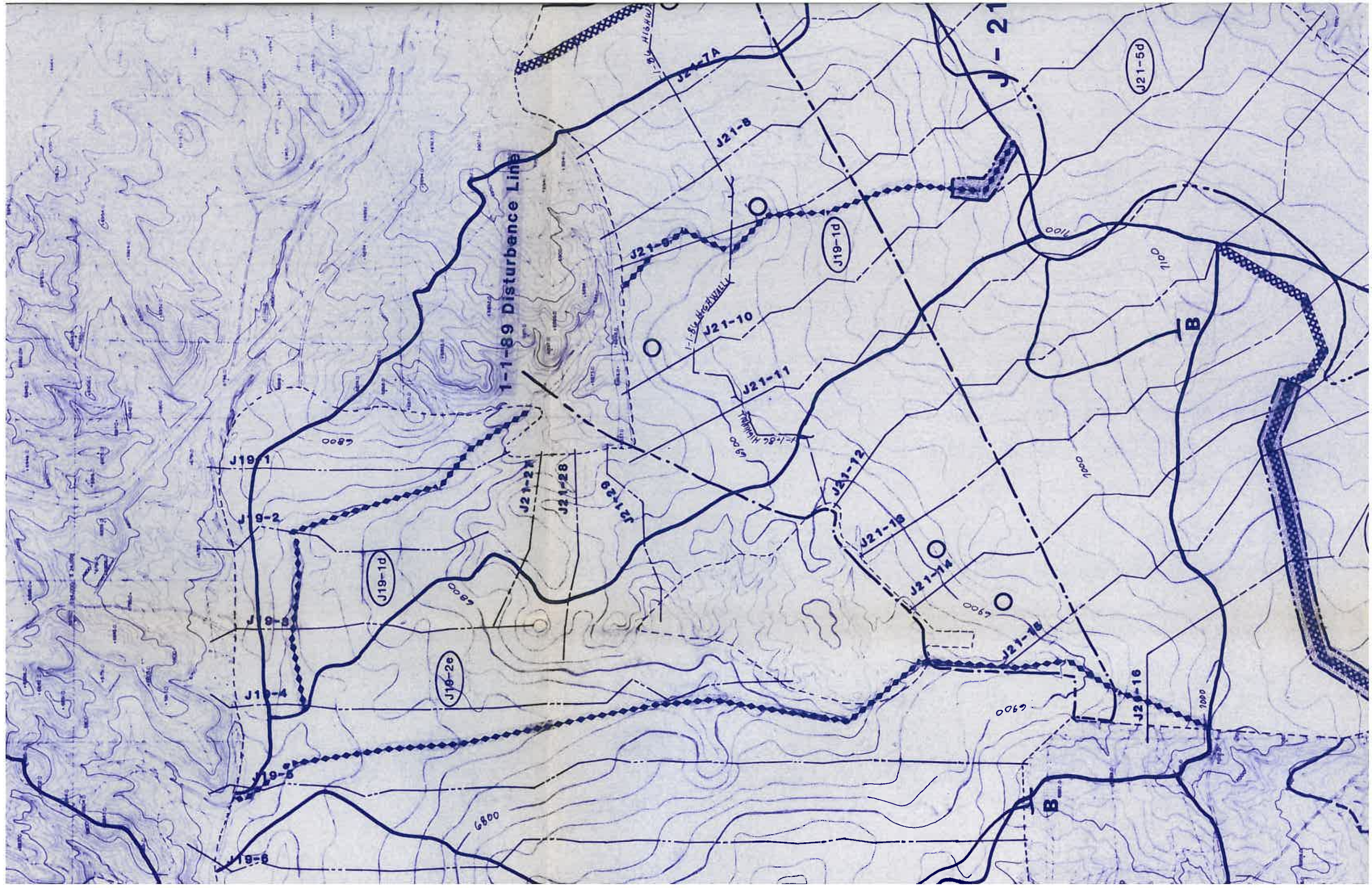
11700

11800









1-1-89 Disturbance Line

J19-1

J19-2

J19-3

J19-4

J19-5

J19-6

J19-1d

J19-2e

J21-21

J21-28

J21-29

J21-9

J21-10

J21-11

J21-12

J21-13

J21-14

J21-15

J21-16

J21-7A

J21-8

J-21

J19-1d

J21-5d

1100

7000

6900

6900

7000

0011

1100

B

B

1-1-89 Highway

O

O

O

O



1-1-89 Disturbance Line

J-28

KAYENJA MINE
OFFICE & SHOP
FACILITIES

J19-1

J19-2

J19-3

J19-4

J19-5

J19-6

J16-4a

J19-1d

J16-2e

1-1-89 Disturbance Line

J21-2a

6800

6800

6900