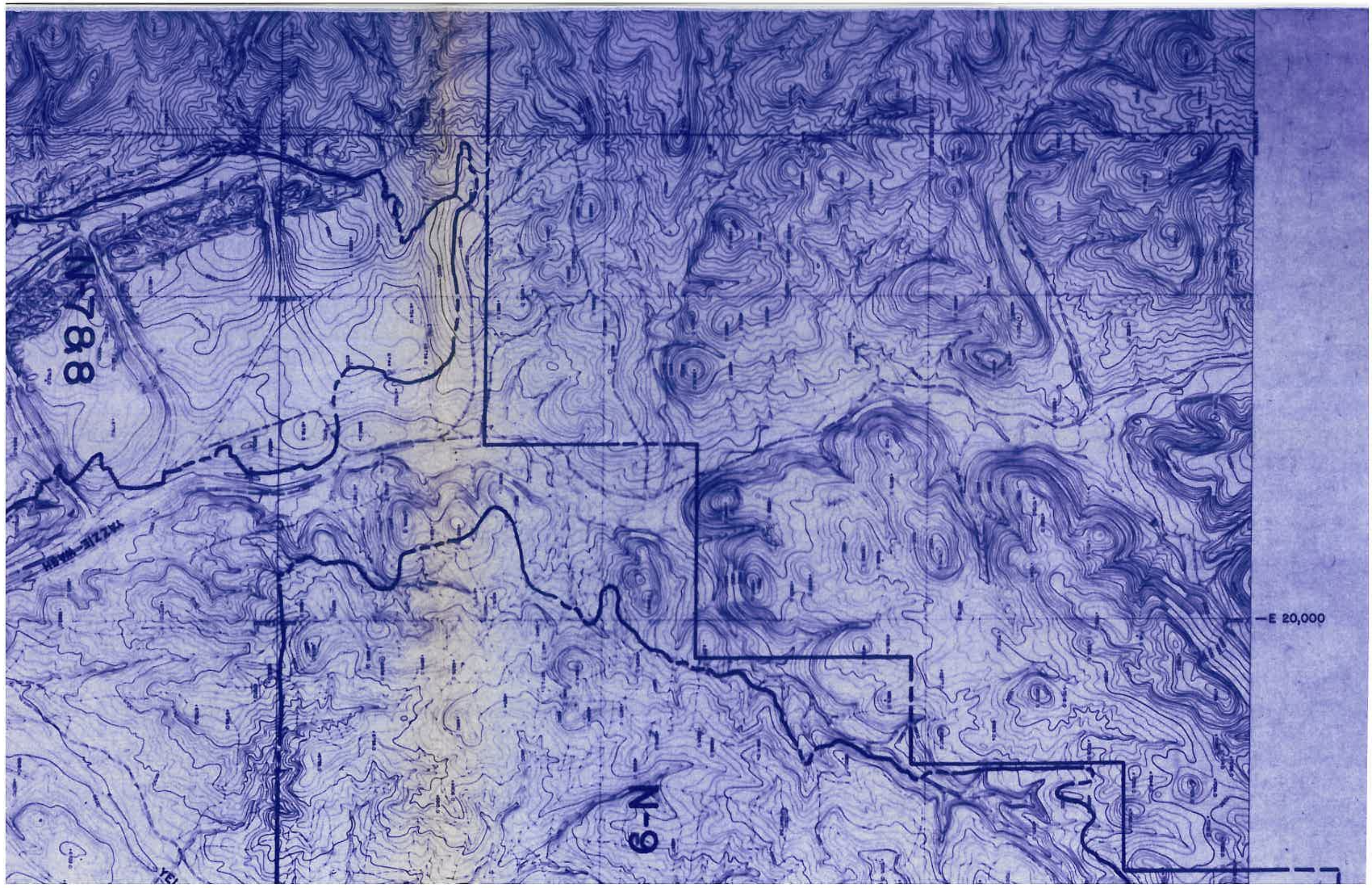


788

6-N

E 20,000

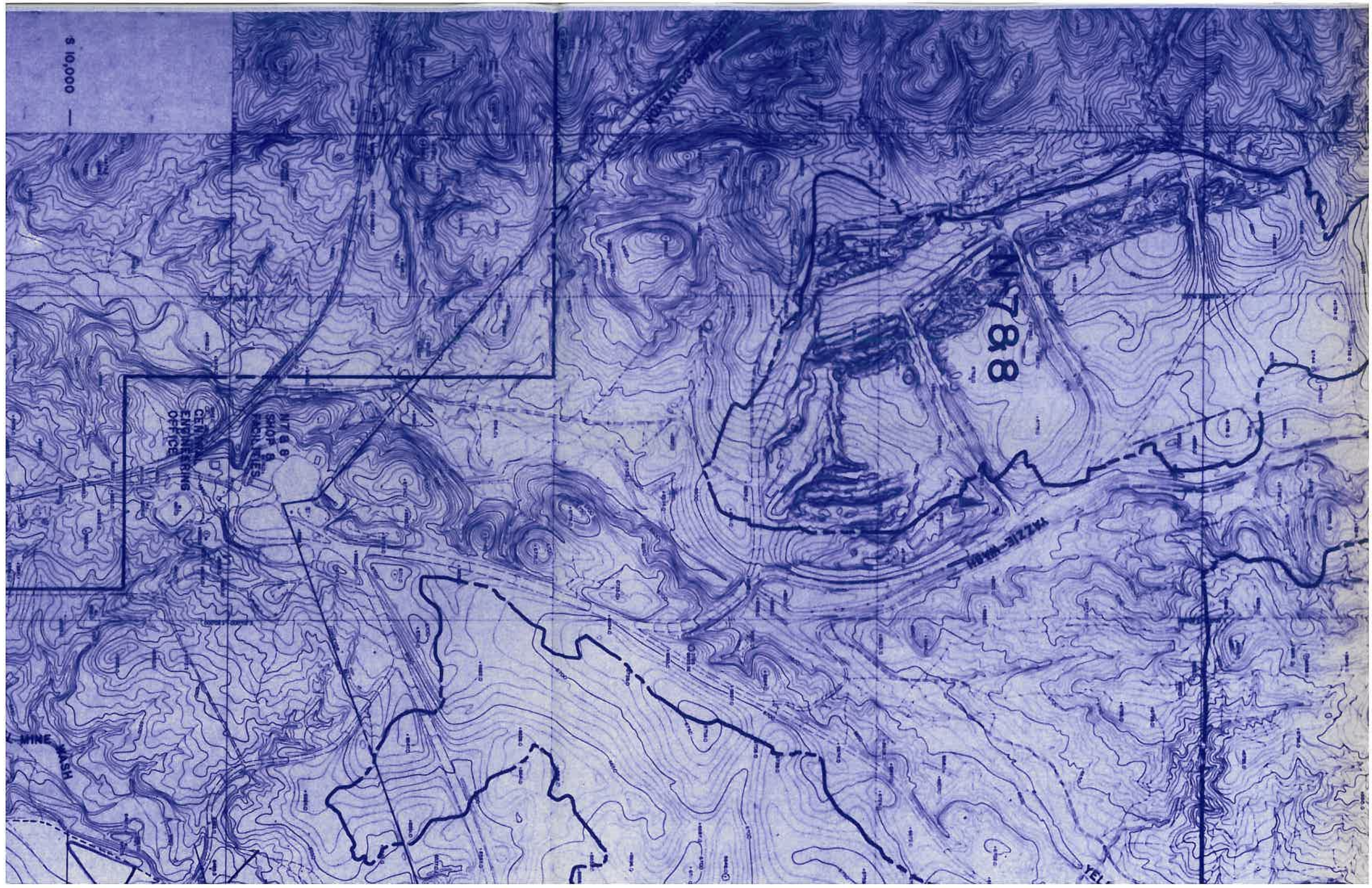


S 10,000

CEN
ENGINEERING
OFFICE

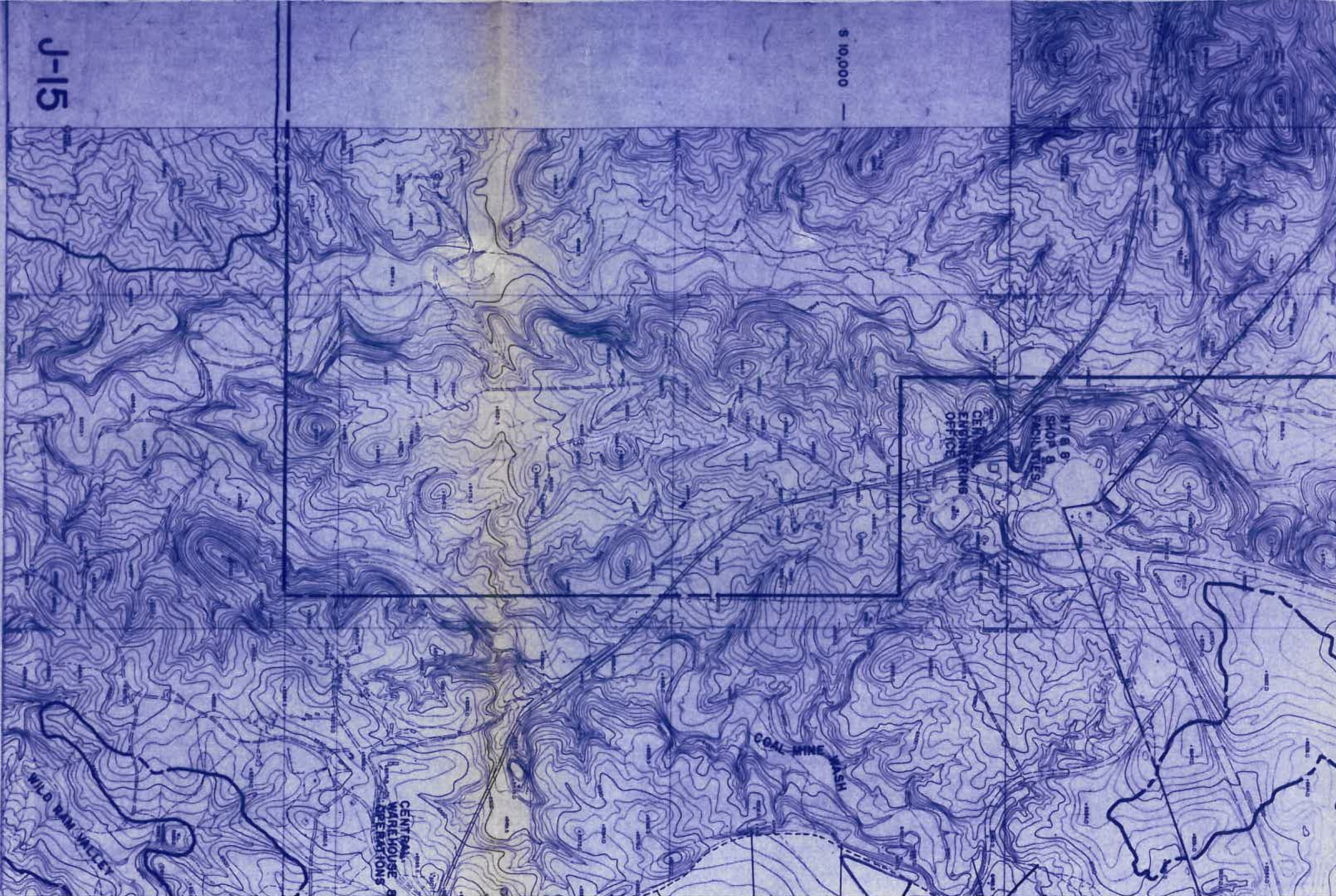
MT 8 9
SHOP &
FACILITIES

788



5 10,000

J-15



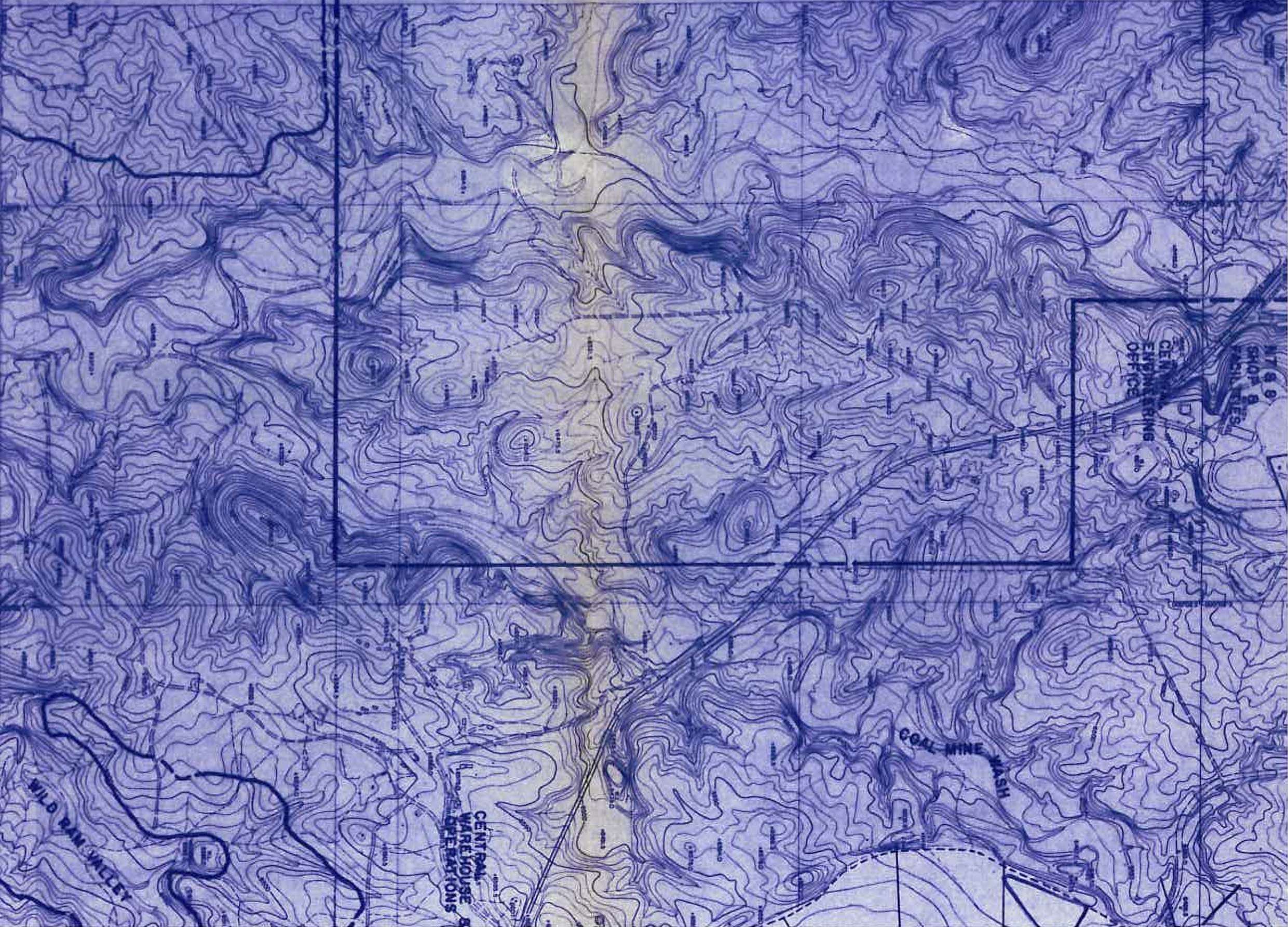
DRAINAGE CHANNEL (10 YR.-6 HR. STORM EVENT)

DRAINAGE CHANNEL (100 YR.-6 HR. STORM EVENT)

PERBODY LEASEHOLD BOUNDARY

SCALE 10,000

J-15

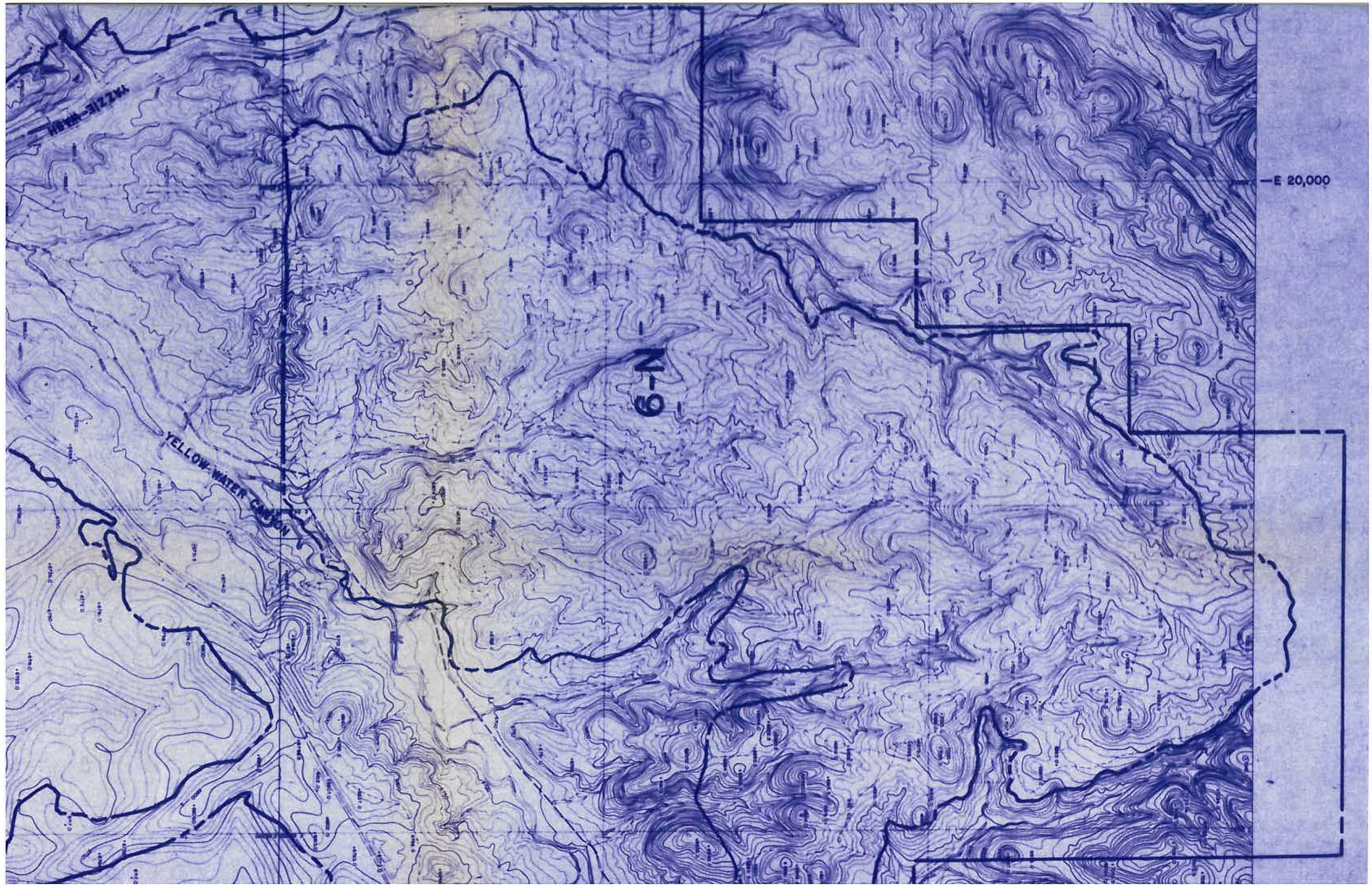


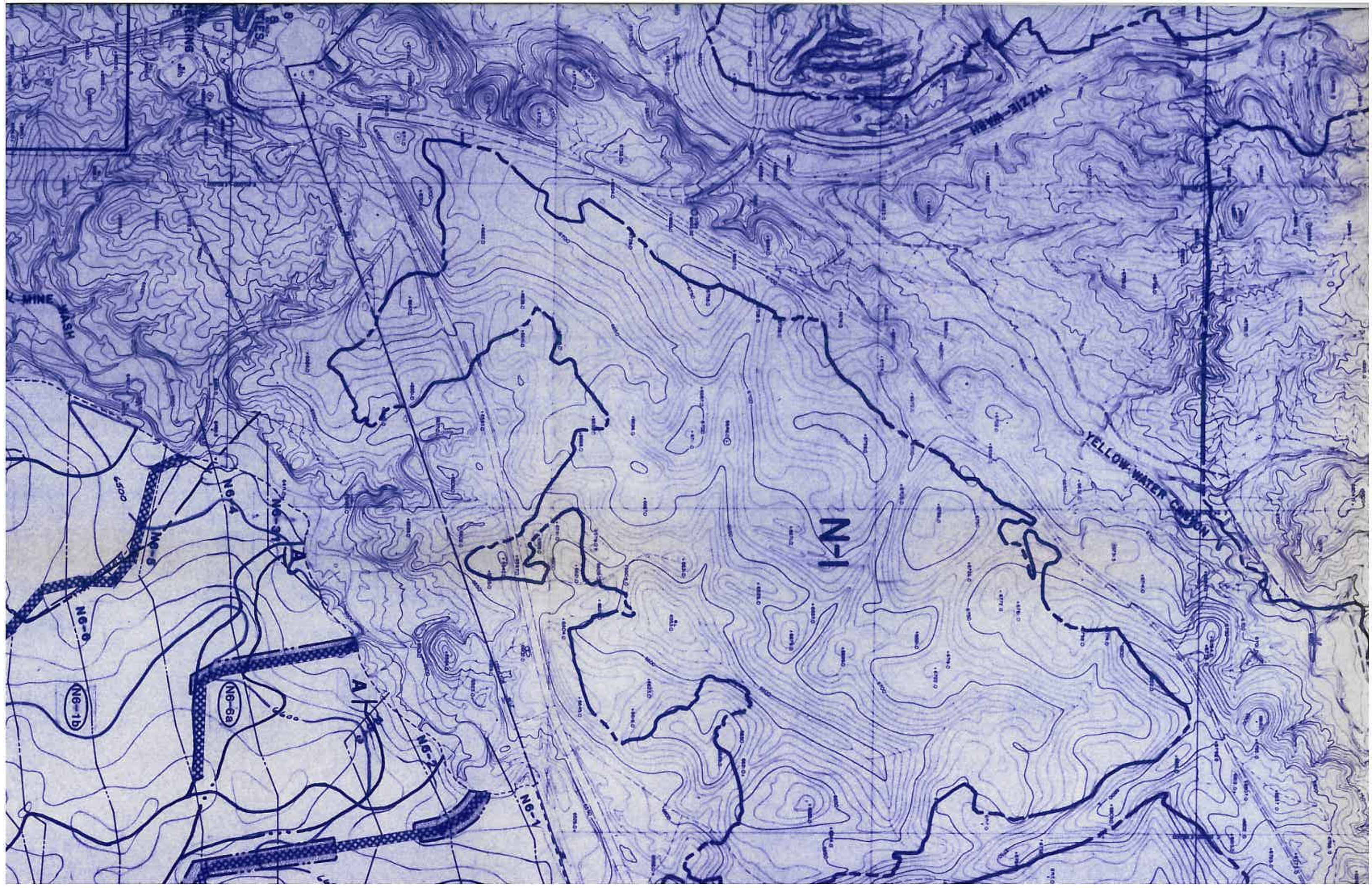
- DRAINAGE CHANNEL (10 YR.-6 HR. STORM EVENT)
- DRAINAGE CHANNEL (100 YR.-6 HR. STORM EVENT)
- PERBODY LEASEHOLD BOUNDARY
- CROSS SECTION LOCATION IDENTIFIER (SEE DRAWING No. 85205)
- PASTM/WING SURFACE CONTOURLINE EXTENT (SEE CHAPTER 21)
- MINING HIGHWALL AS OF 1-1-86
- RECLAMATION WATERSHED BOUNDARY

- WATERSHED No. IDENTIFICATION (SEE DRAWING 85350)
- WILDLIFE LEGEND
- Contour Locations (Approx.)
- Drainage Planting Locations
- Field Trial Locations

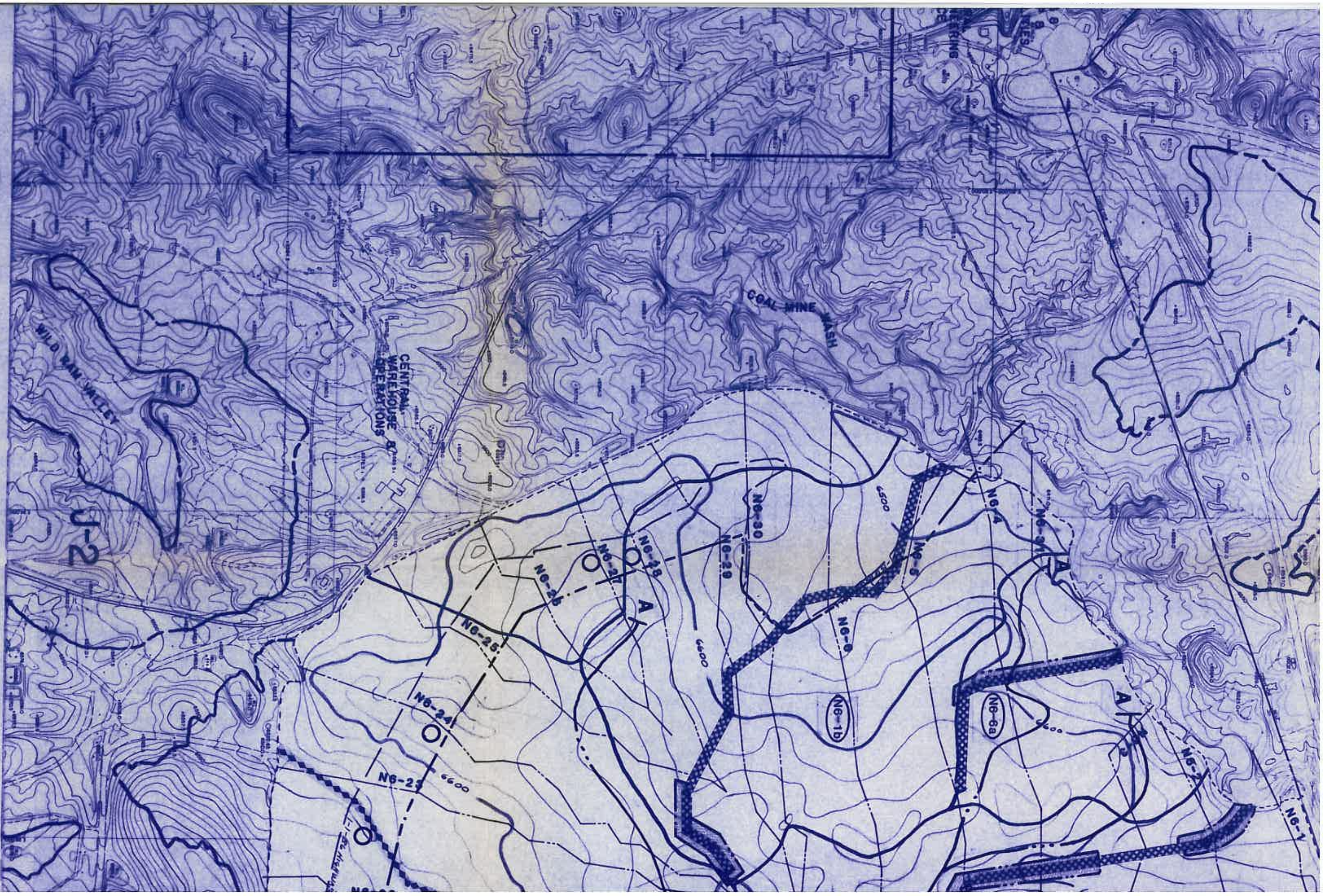
WATERSHED IDENTIFICATION SUFFIX	Non-Topsoidal Channel Width(Ft.)
a	45
b	60
c	75
d	90
e	105
f	120
g	135
h	150

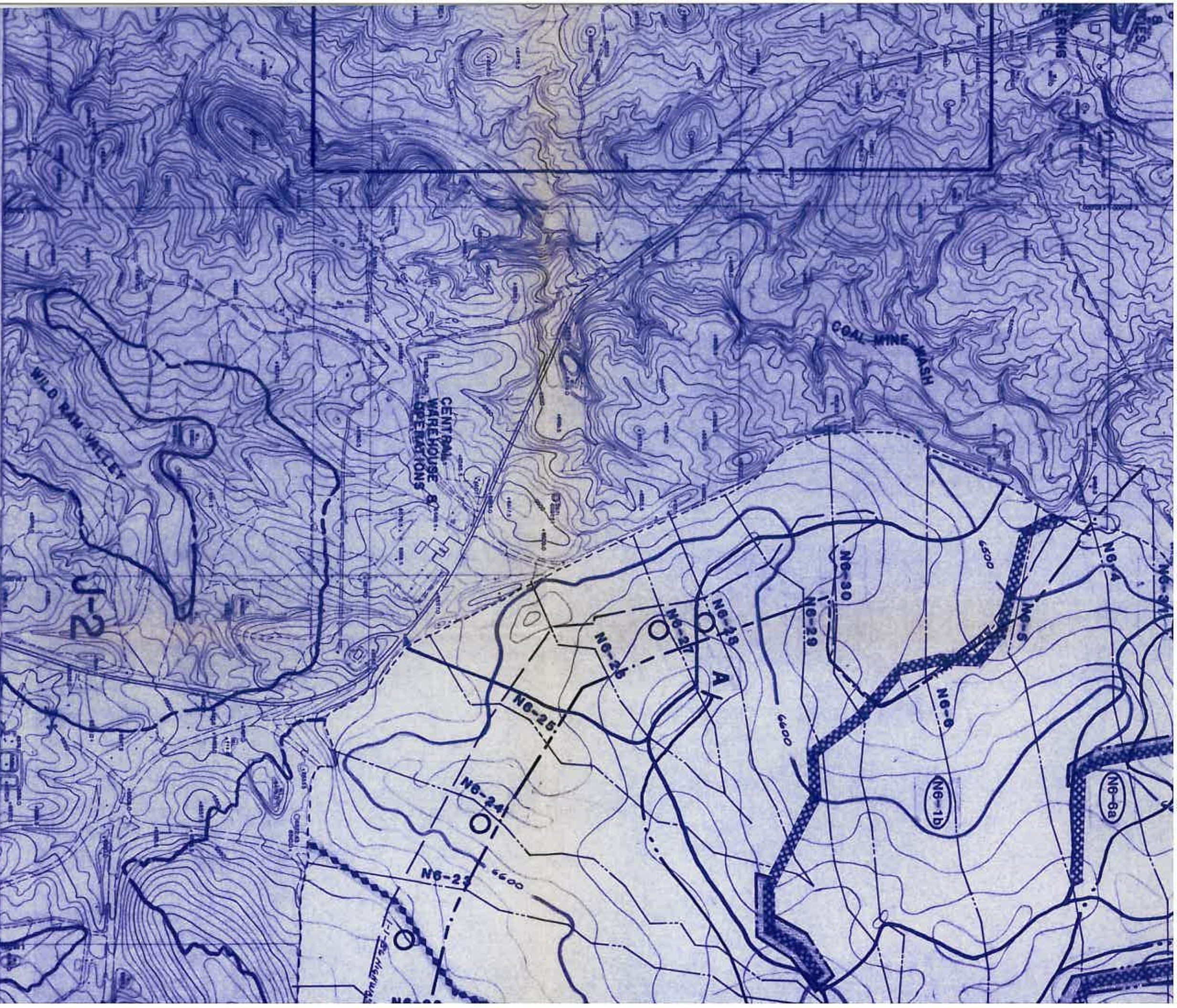






YR.-6 HR. STORM EVENT)
0 YR.-6 HR. STORM EVENT)
WUDBALY





10 YR.-6 HR. STORM EVENT)

BOUNDARY

IDENTIFIER (SEE DRAWING No. 55205)

BOUNDING EXTENT (SEE CHAPTER 21)

1-1-86

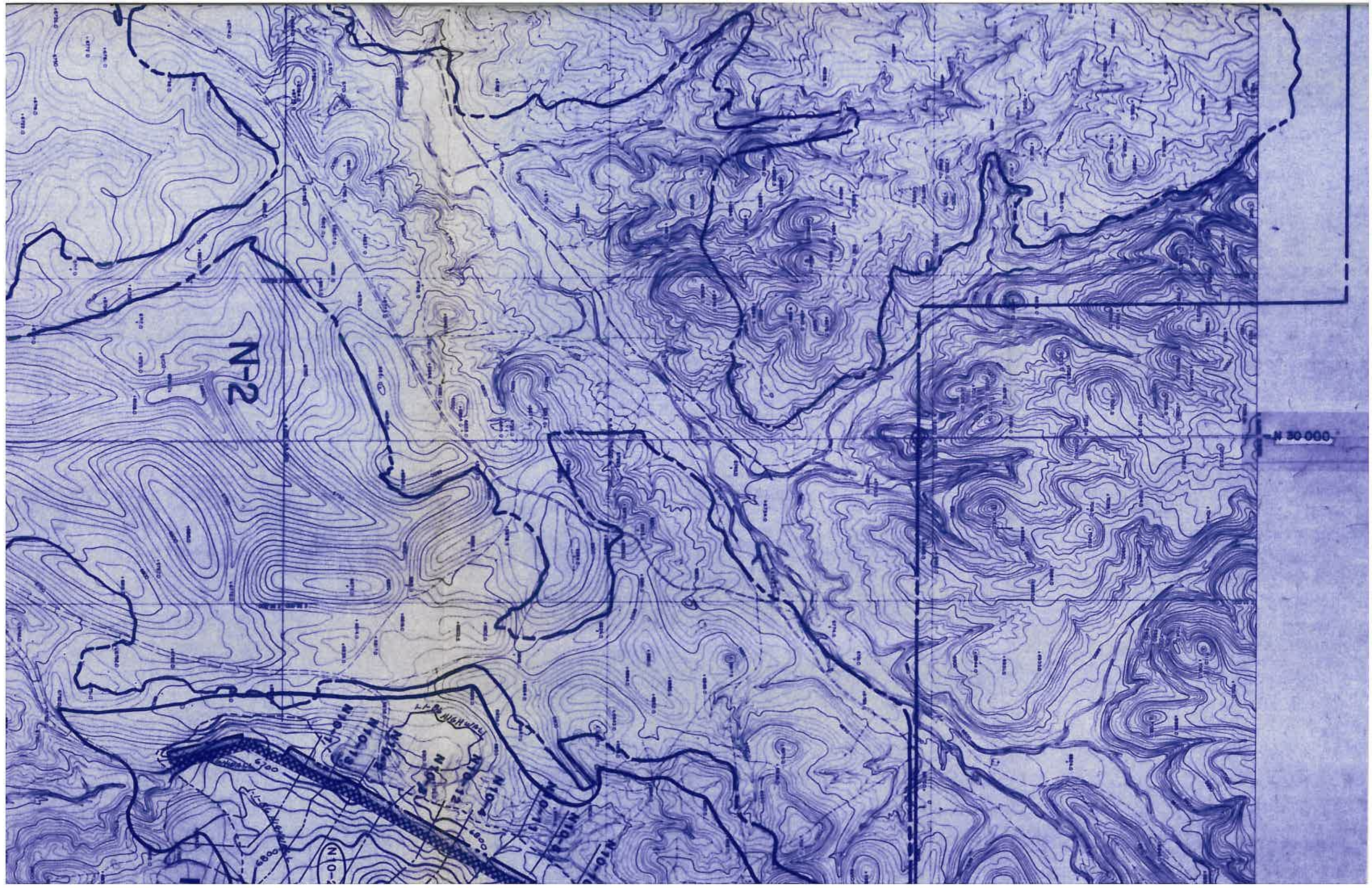
BOUNDARY

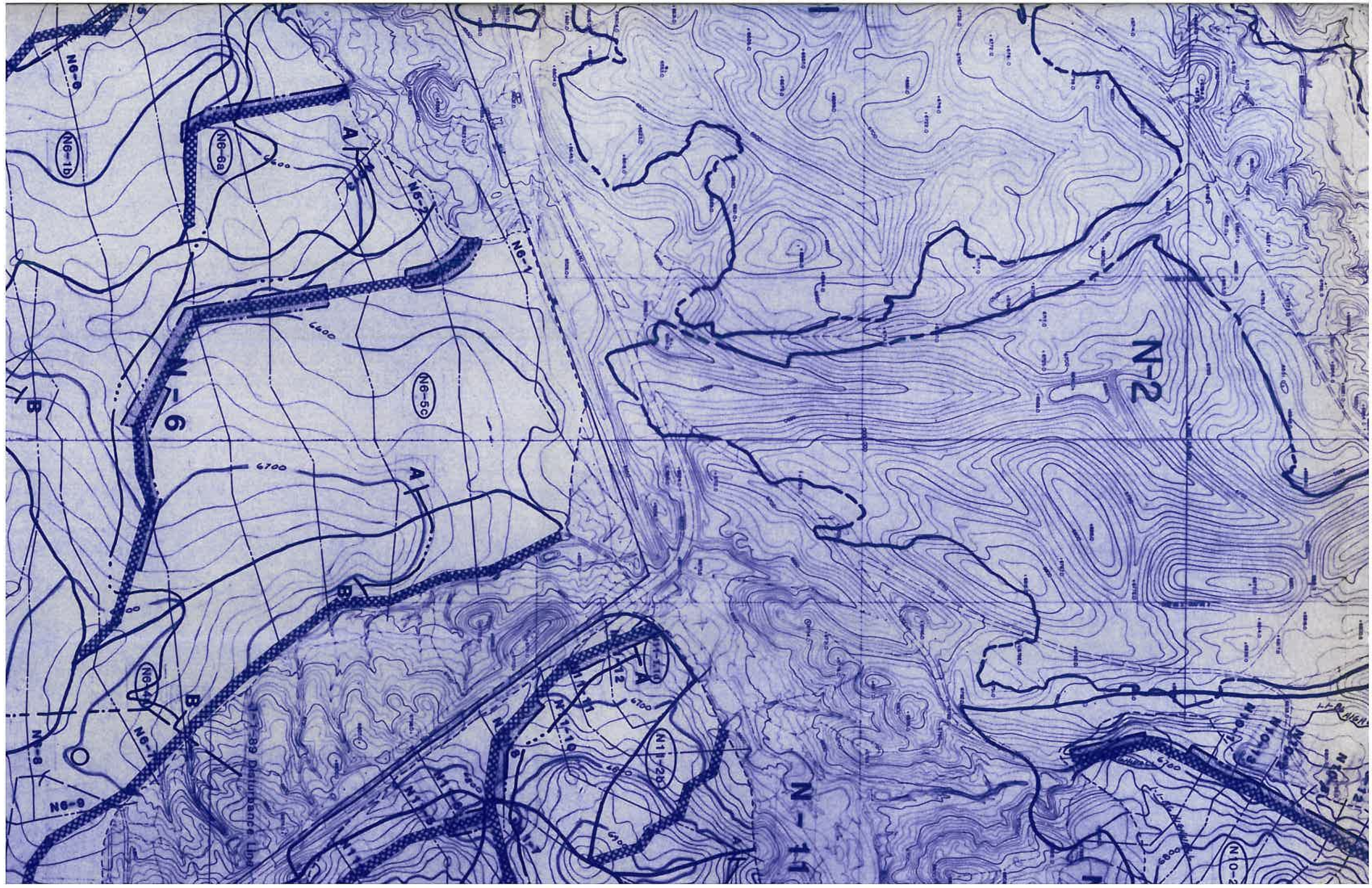
WATERSHED
IDENTIFICATION
SUFFIX

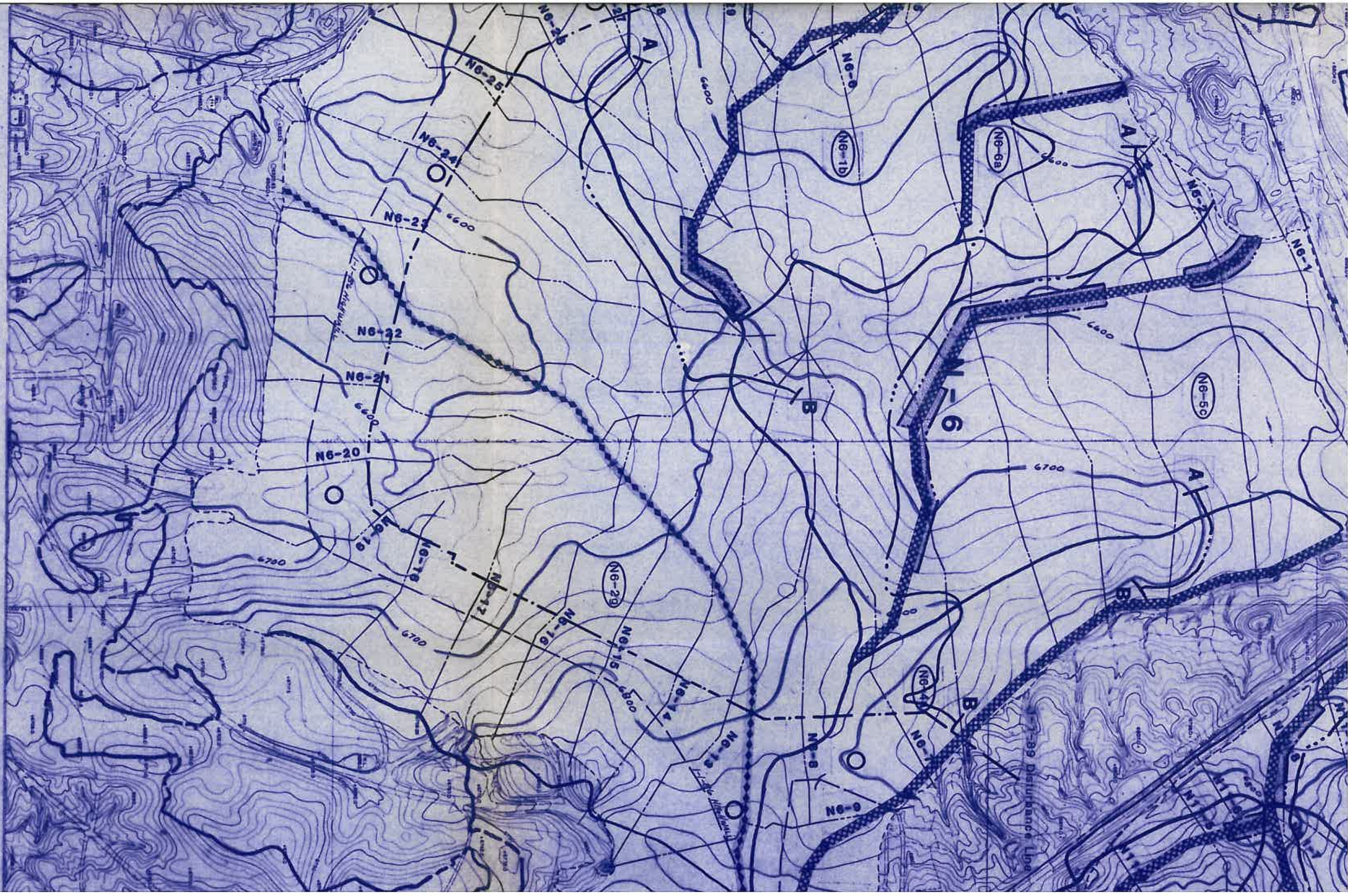
Channel Width (ft)	Non-Topsoidal
a	45
b	60
c	75
d	90
e	105
f	120
g	135
h	150

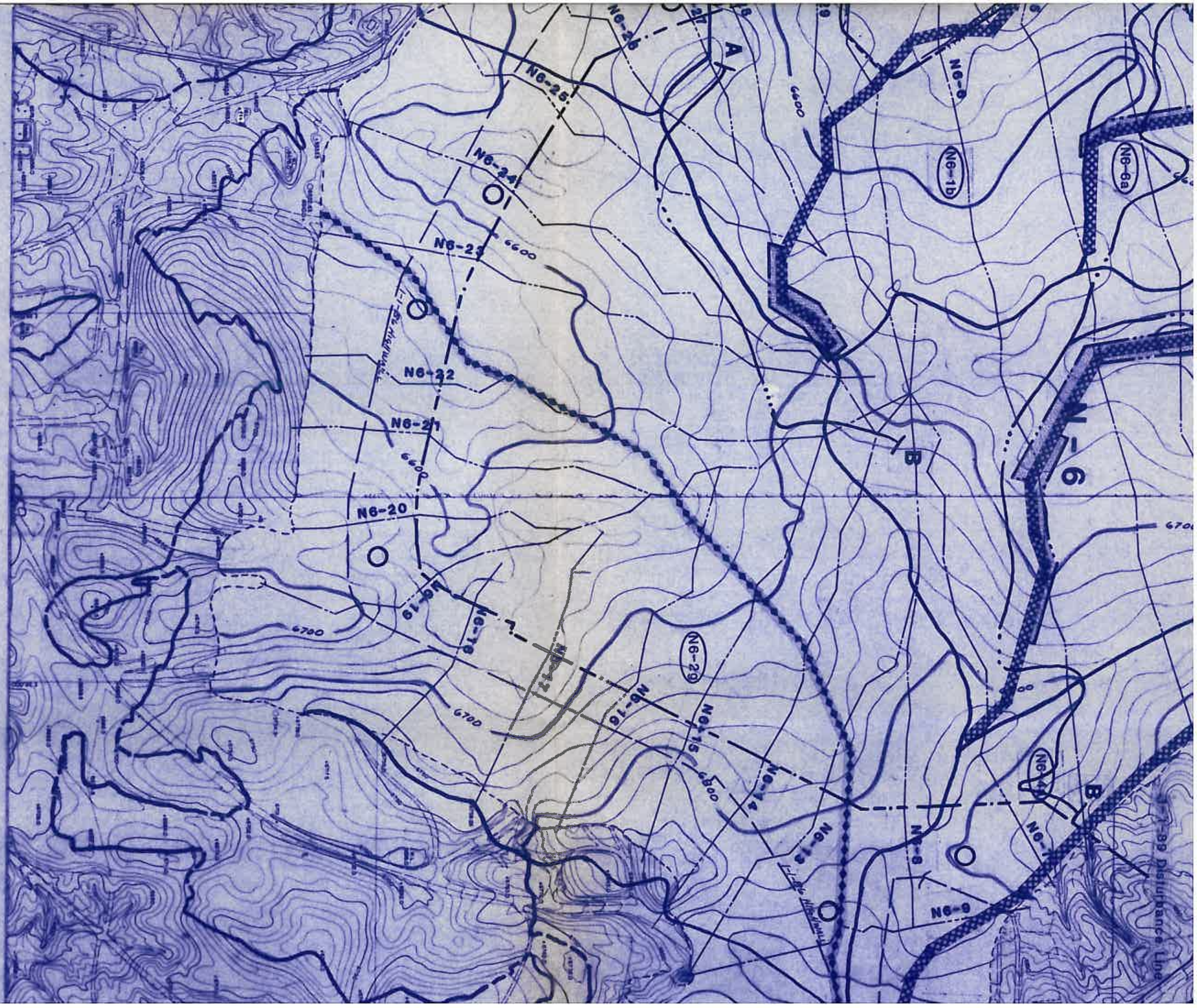


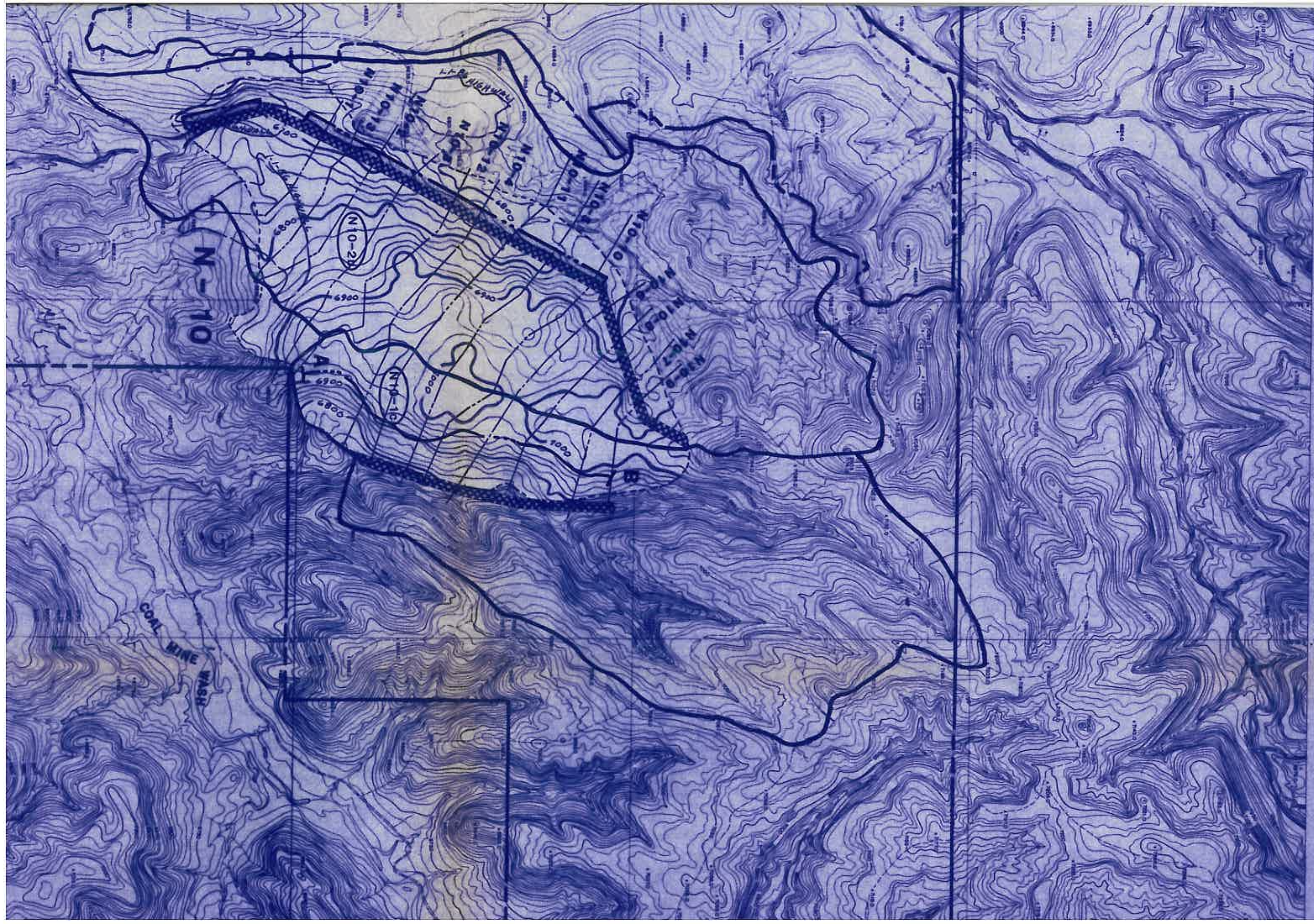
VERTICAL DATUM: MEAN SEA LEVEL



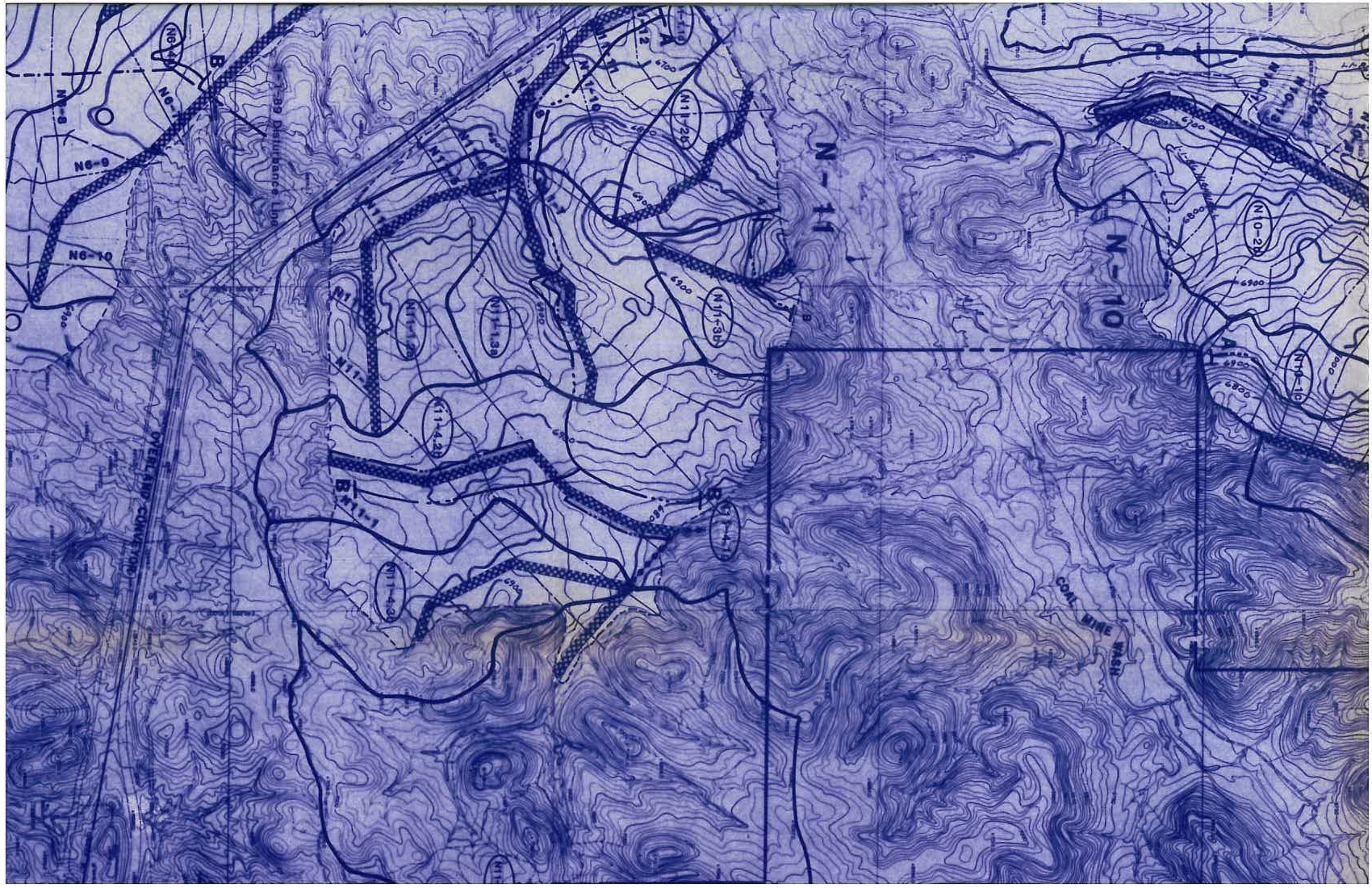


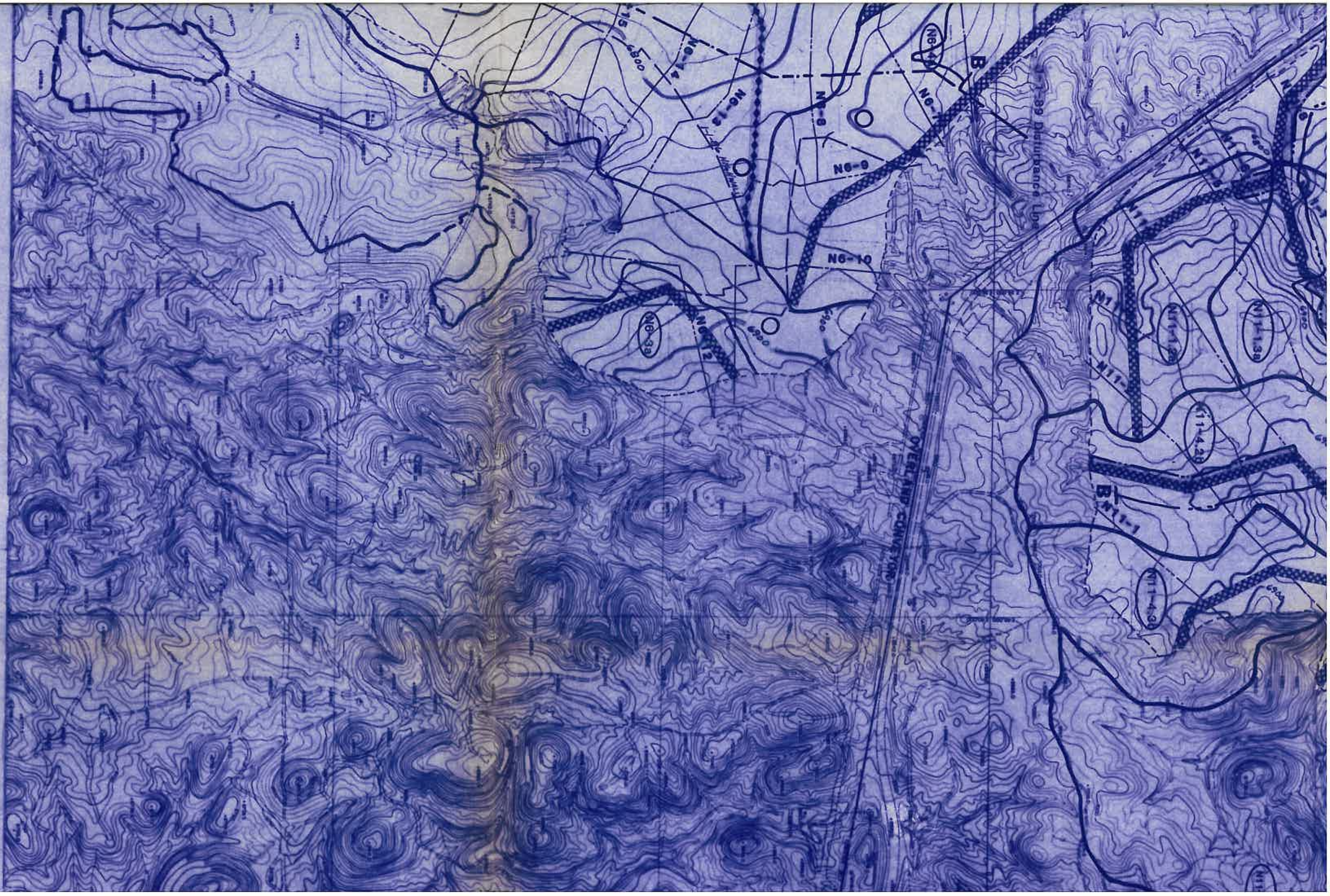


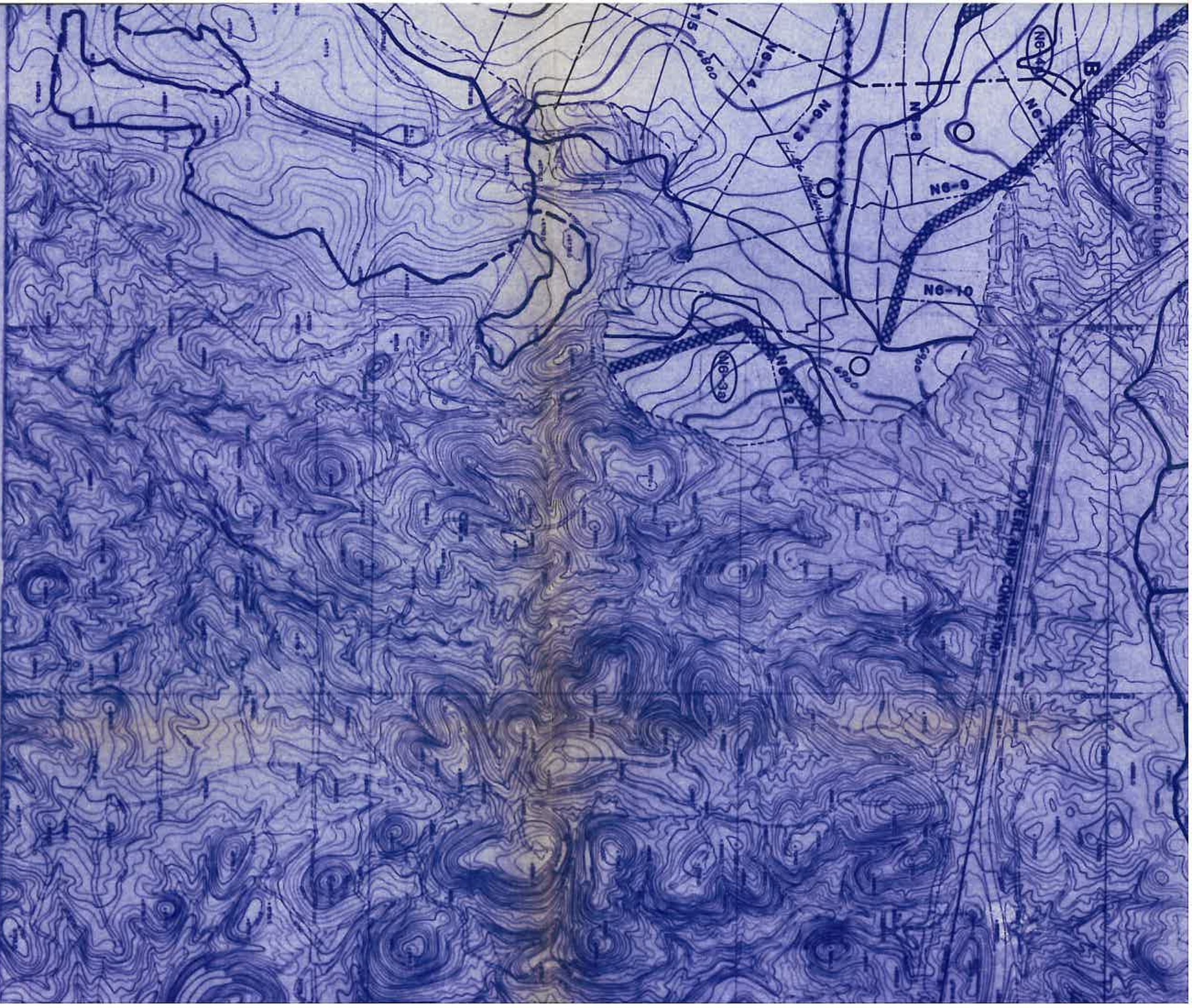




- E 40,000

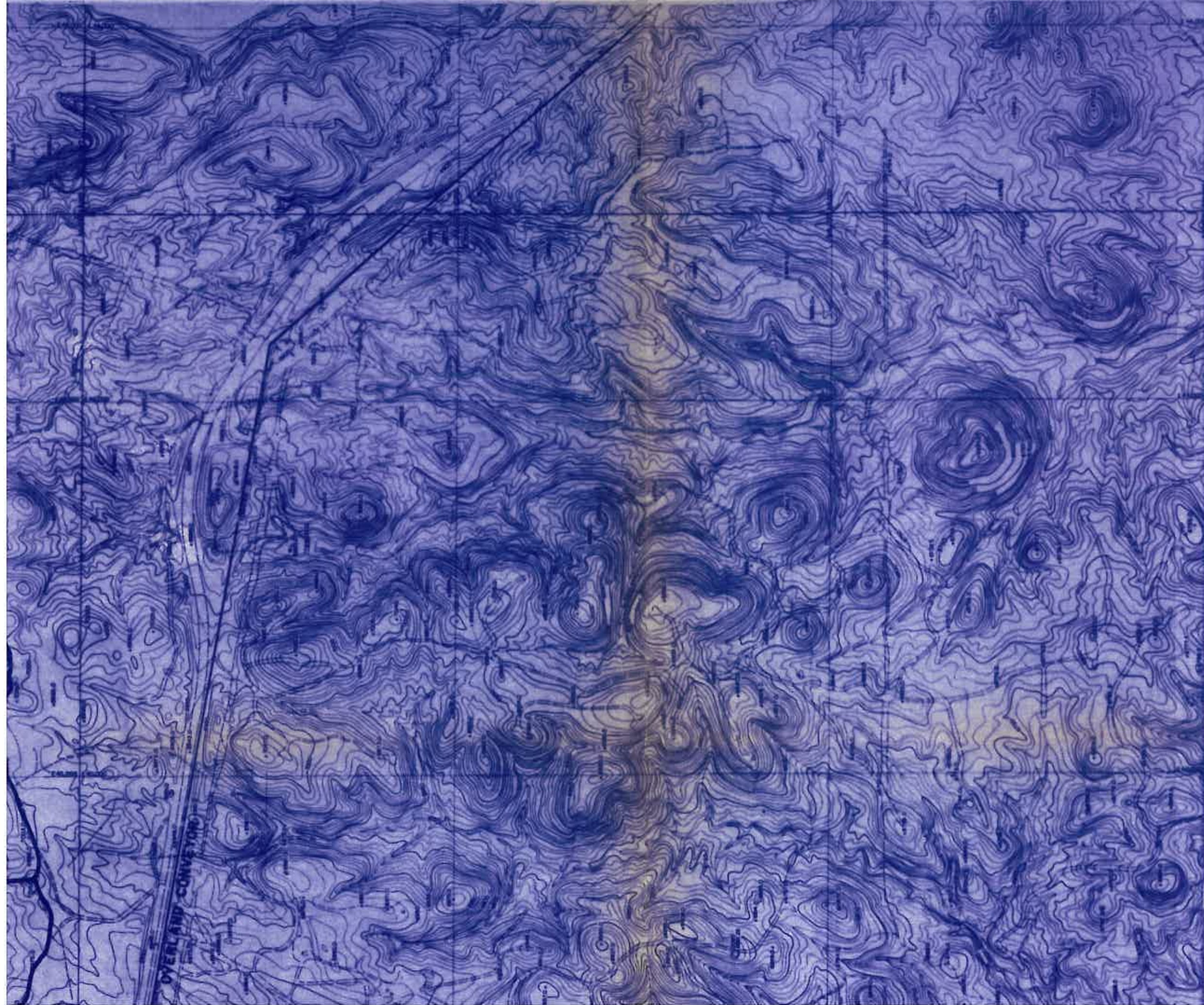






NOTE: POSTMINING DISTURBEDS
 © CI-20'

PEABO BLACK MOUNTAIN KAYENT			
KEY WILDLIFE AREA			
D.V.M.	J.G.S.	12-14-98	POSTMINING
J.H.L.	R.L.G.	12-17	OSMRE I
B.D.	-	1-28-00	WILDLIFE
DRASD BY	APP'D BY	DATE	

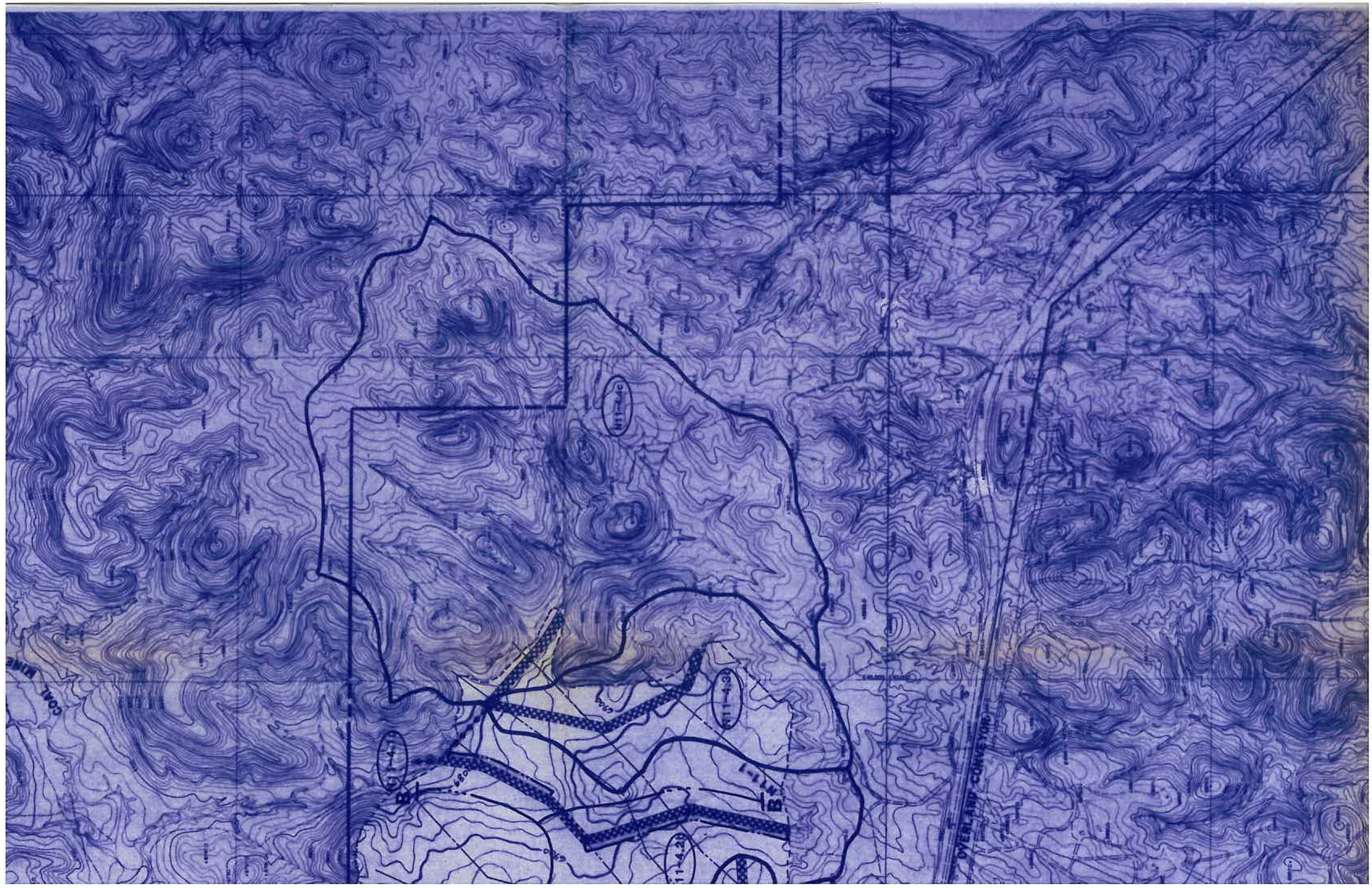


PEABODY COAL COMPANY
 BLACK MESA - KAYENTA MINE
 P.O. BOX 625
 KAYENTA, ARIZONA 86033

**KEY WILDLIFE HABITAT
 AREA LOCATION MAP**

D.V.M. J.G.S.		12-14-85	POSTMINING WATERSHEDS & CHANNELS	DATE: 11-85	DRG. NO. 85321
J.H.J.	R.J.G.	12-1-87	OSMRE RESPONSES	SCALE: 1" = 1000'	SHEET NO. 1 of 3
B.D.	-	1-20-88	WILDLIFE RESPONSES	S.I. 10'	DRAWN BY:
DRG. BY	APP'D BY	DATE	REVISION	DESCRIPTION	

NOTE: POSTMINING CONTOURS
 @ C.I. = 20'



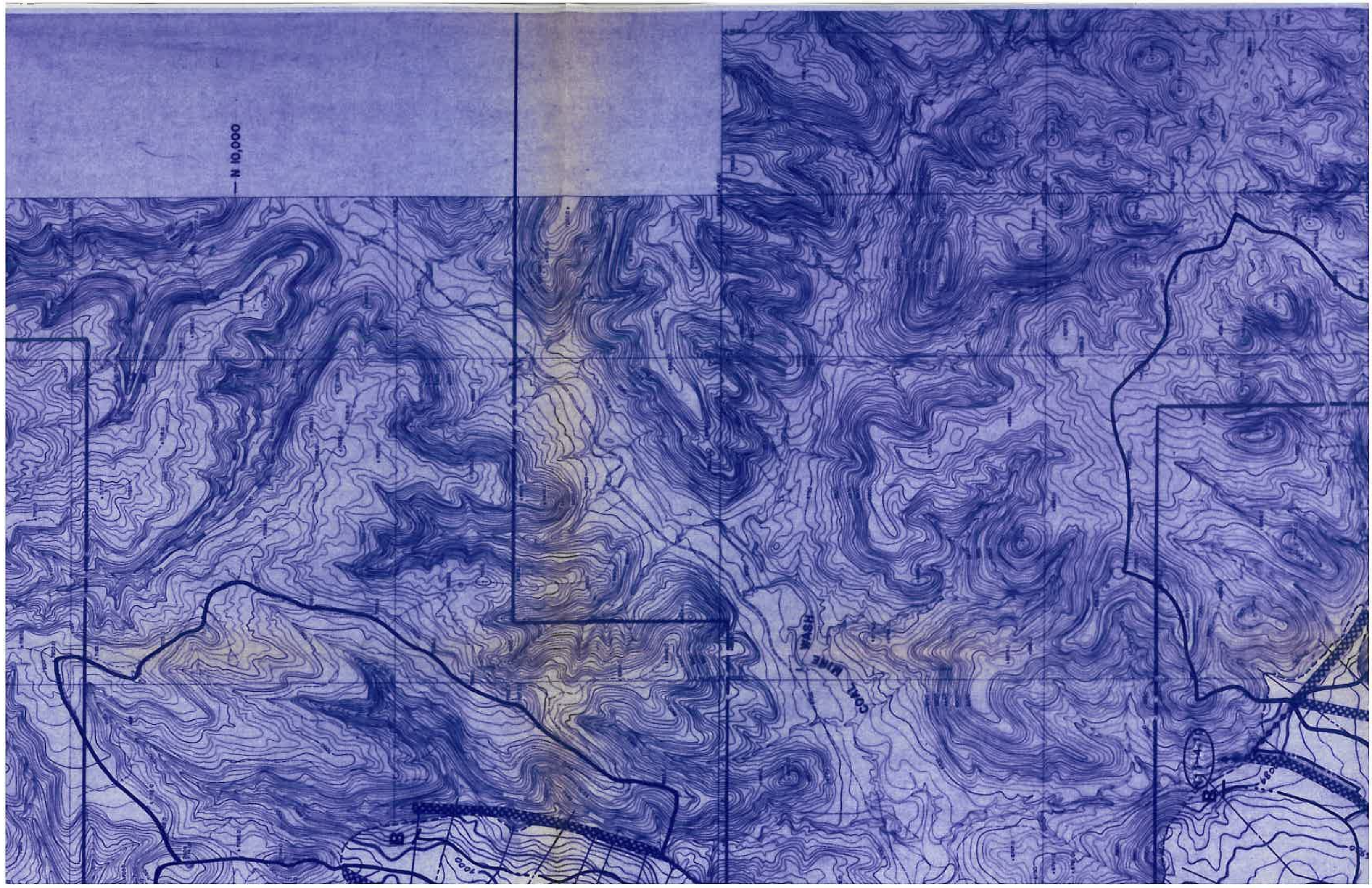
N 10,000

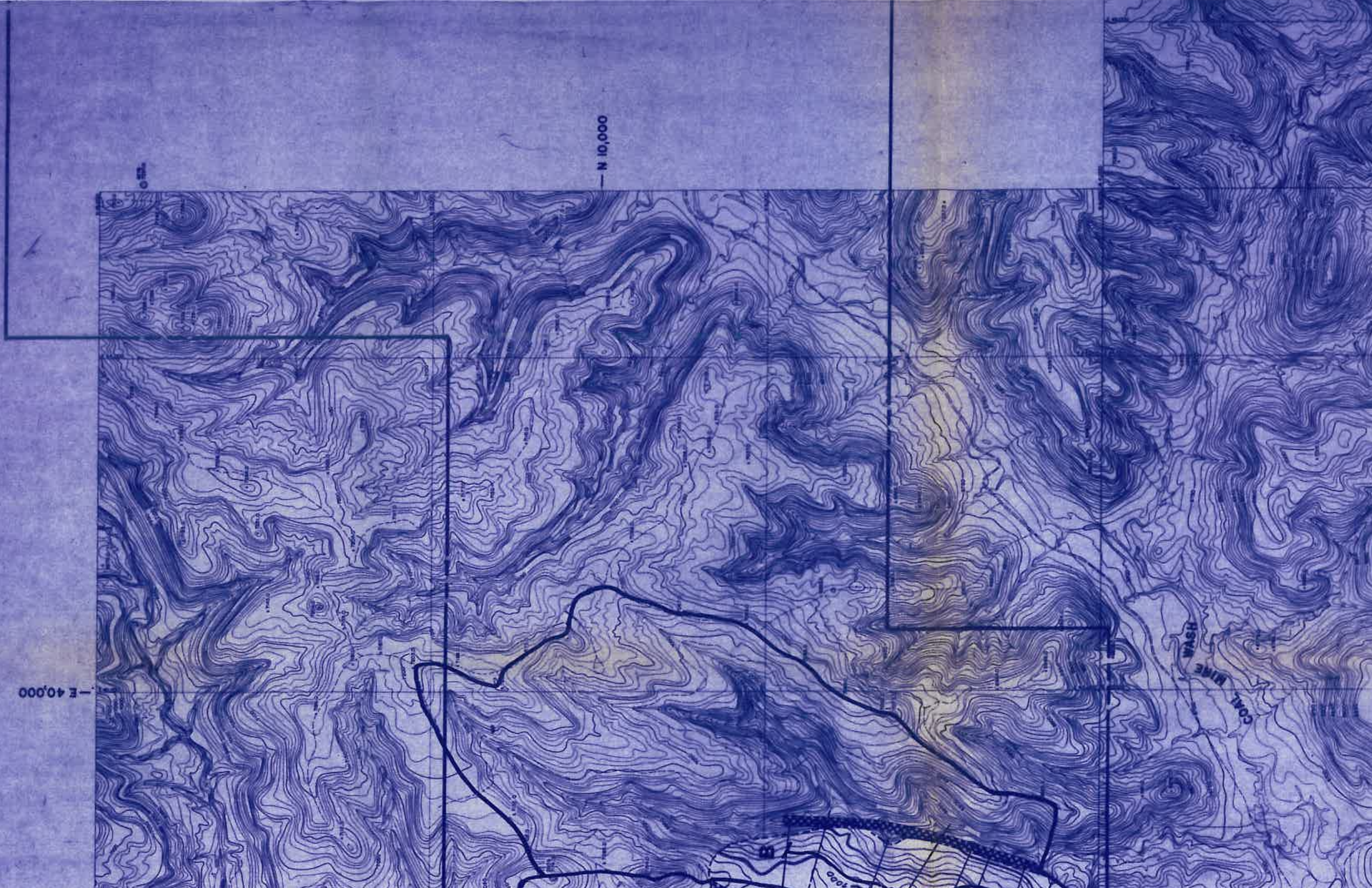
WASH
HSHK
COAL MINE

1000

1000

1000





0 500

N 10,000

E 40,000

COAL MINE
HSAW

1000