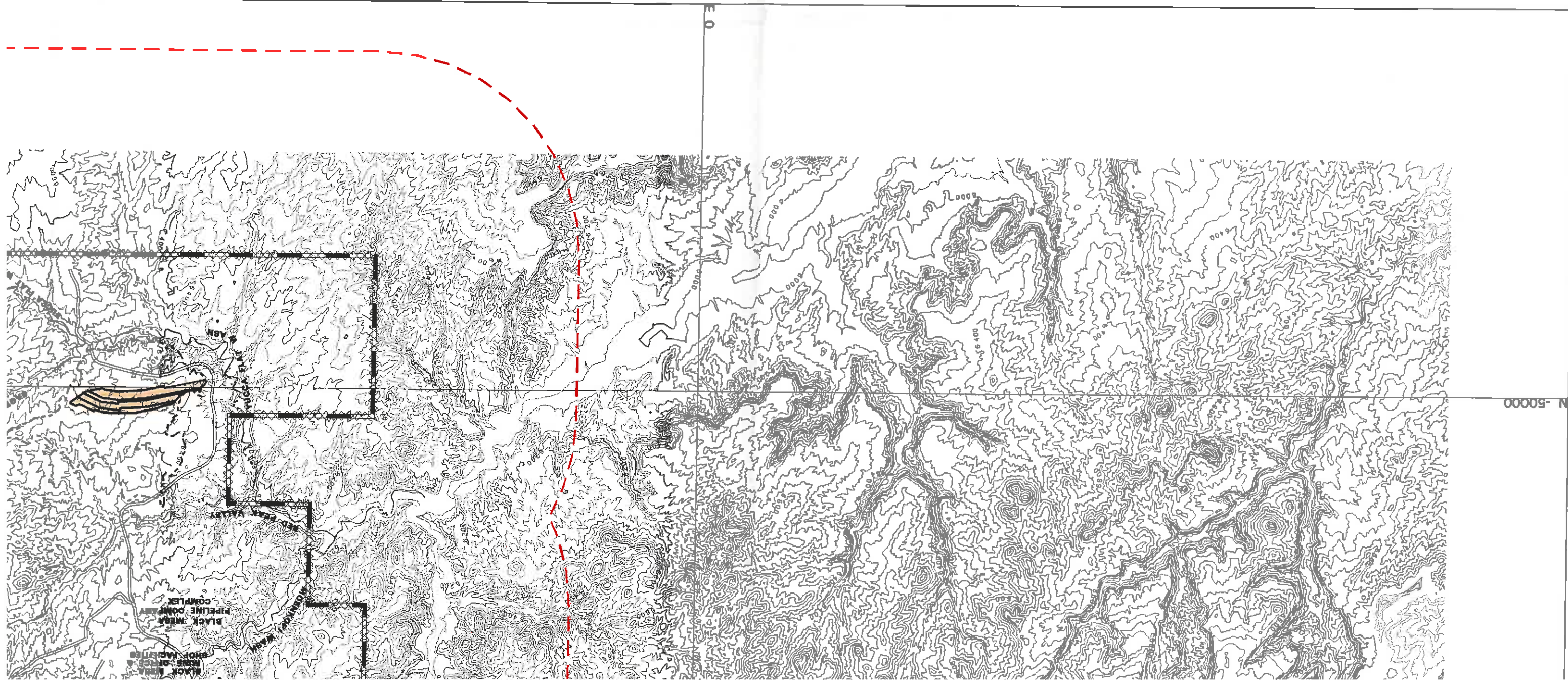


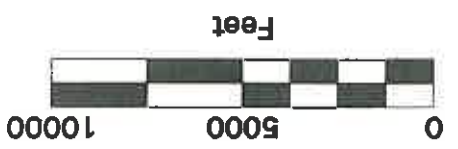
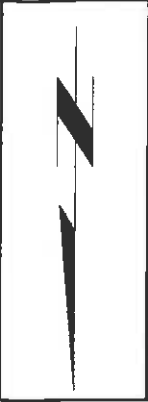
PEABODY
WESTERN



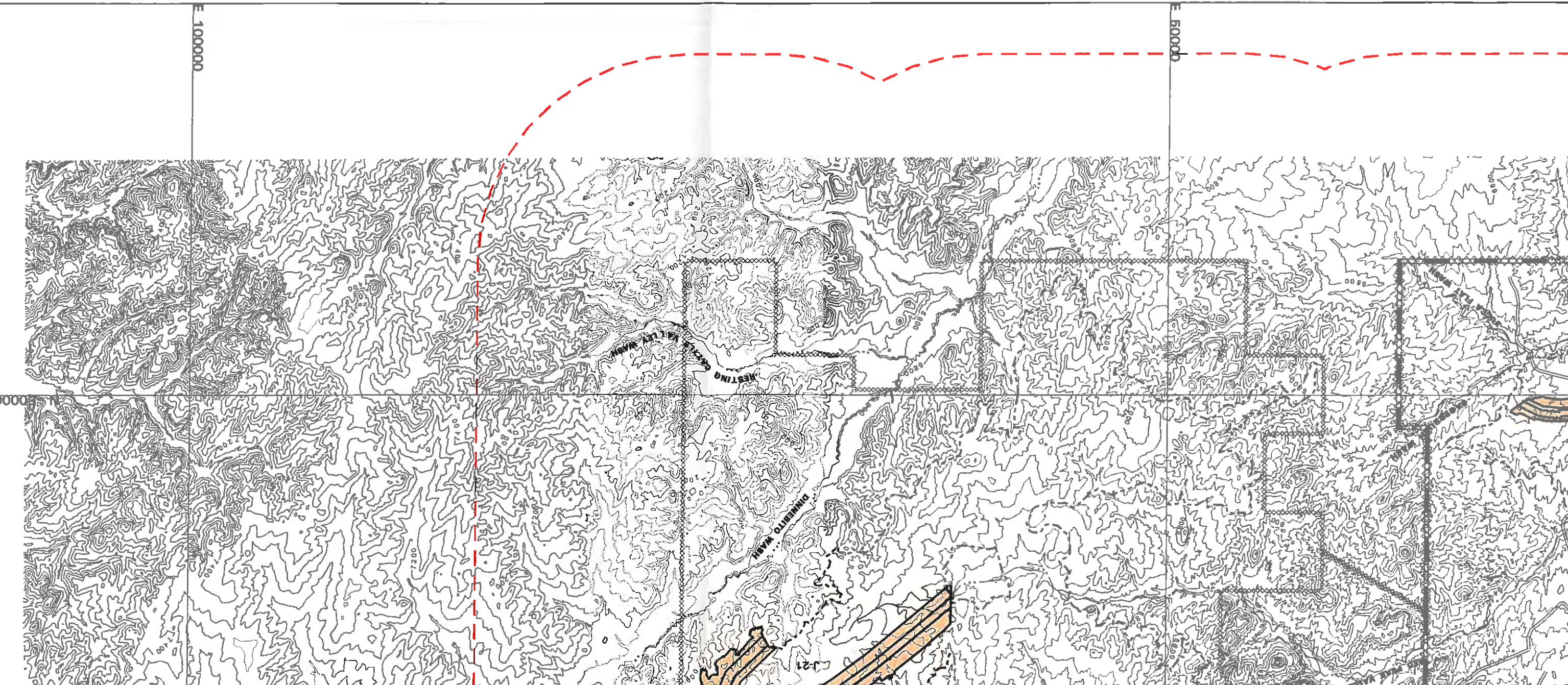
F4	G4	H4	J4	K4	L4	M4	N4	P4	Q4	R4
F3	G3	H3	J3	K3	L3	M3	N3	P3	Q3	R3
F2	G12	H12	J12	K12	L12	M12	N12	P12	Q12	R12
F1	G11	H11	J11	K11	L11	M11	N11	P11	Q11	R11
F0	G10	H10	J10	K10	L10	M10	N10	P10	Q10	R10
F9	G9	H9	J9	K9	L9	M9	N9	P9	Q9	R9
F8	G8	H8	J8	K8	L8	M8	N8	P8	Q8	R8
F7	G7	H7	J7	K7	L7	M7	N7	P7	Q7	R7
F6	G6	H6	J6	K6	L6	M6	N6	P6	Q6	R6
F5	G5	H5	J5	K5	L5	M5	N5	P5	Q5	R5
F4	G4	H4	J4	K4	L4	M4	N4	P4	Q4	R4

NOTES



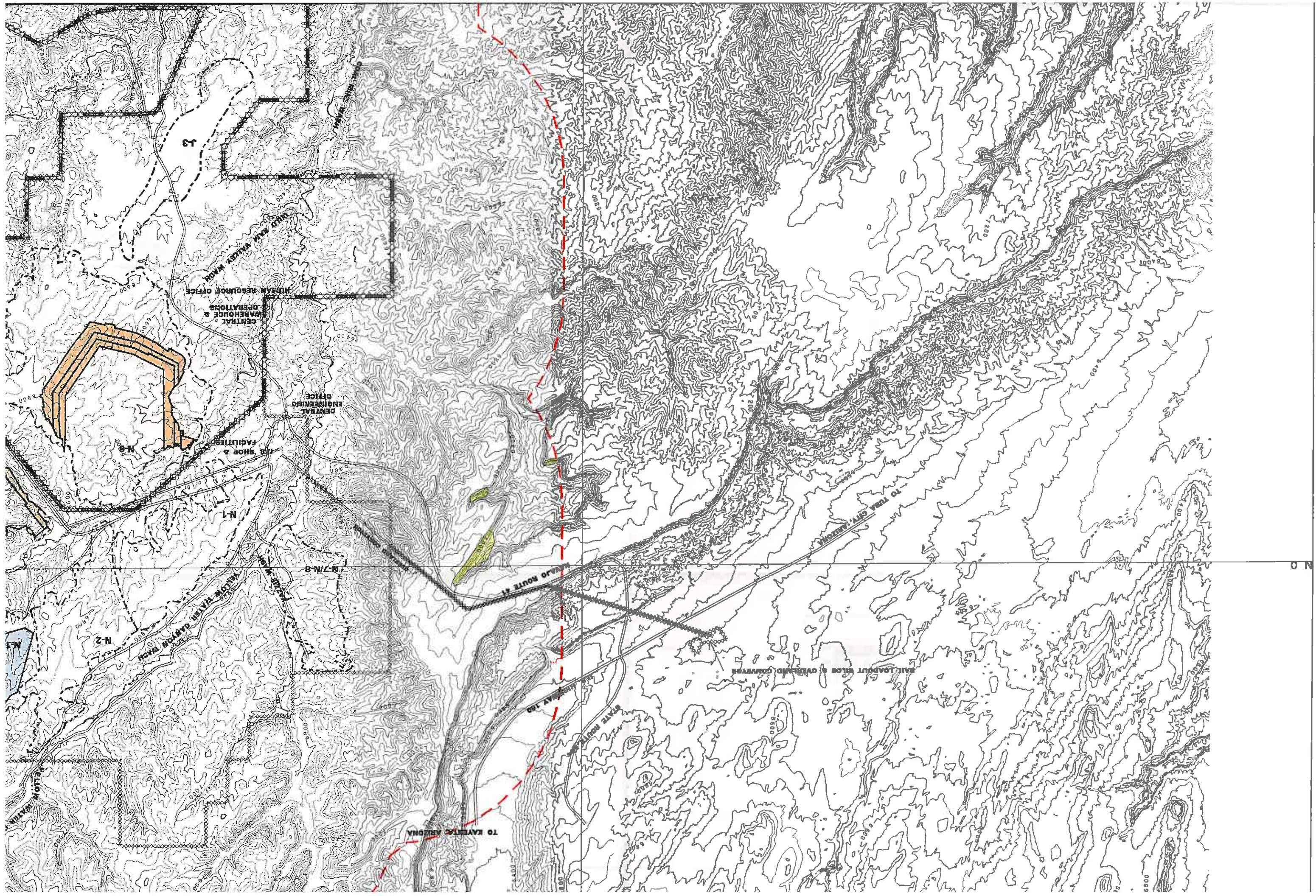


- Mixed Conifer Woodland
- (Suitable Spotted Owl Habitat)
- Coal Resource Area (J-19)
- Two Mile Buffer Boundary
- Five Year Mine Plan
- Life of Pit (N-10 Mine Plan, 2003-2008)
- Exist 01 Permit Line
- Exist 1C Permit Line
- Prop Perm Program Line
- PCC Conveyor
- Major Drainages



REVISIONS	
CHG'D	DESCRIPTION
APR. 04/11/94	N10 Area

DRAWING 85320a Mixed Conifer Woodland Habitat Map	
Black Mesa Complex Peabody Western Flagstaff, AZ 86001	
DESIGNED BY:	GTL
DRAWN BY:	P/WCC
CHECKED BY:	APD
SCALE:	1 in. = 5000 ft.
DESIGNED DATE:	09/15/83
DRAWN DATE:	09/15/83
CHECKED DATE:	09/15/83
CONTOUR INTERVAL: 40 FT.	



3

HUMAN RESOURCE OFFICE

CENTRAL WAREHOUSE & OPERATIONS

CENTRAL ENGINEERING OFFICE

LAB SHOP & FACILITIES

N-1

N-7/N-8

N-2

YELLOW VALLEY CANYON ROAD

STATE ROUTE 41

STATE ROUTE 183

RAIL LOADOUT PILES & OVERLAND CONVEYOR

TO TUSA CITY, ARIZONA

TO KAVERTZ, ARIZONA

N 0

