

**PEABODY COAL COMPANY  
BLACK MESA – KAYENTA MINE  
DRAWING NO. 85305A**

**LEGEND**

**Symbol**

**Name**

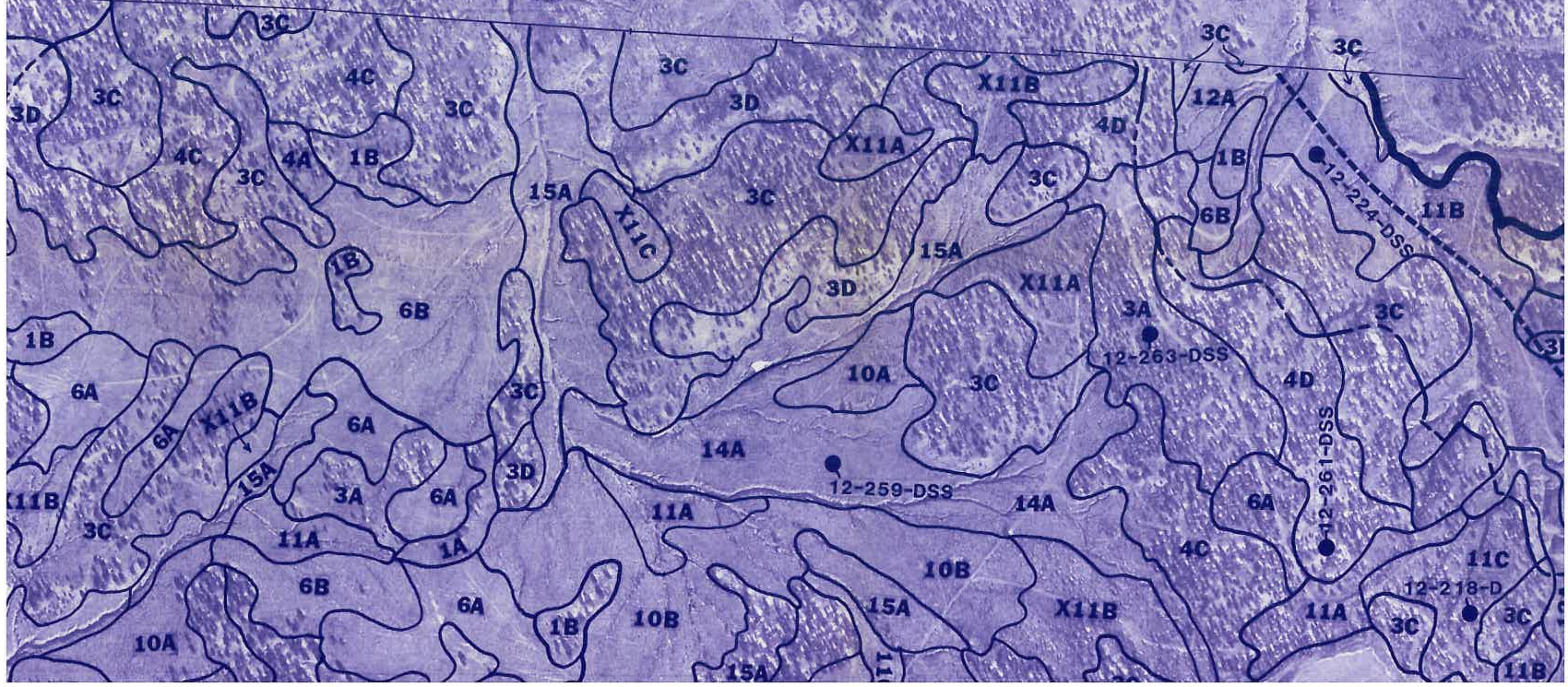
1A	Dulce very channery fine sandy loam, 1 to 4 percent slopes
1, 1B	Dulce very channery fine sandy loam, 4 to 8 percent slopes
1C	Dulce very channery fine sandy loam, 8 to 15 percent slopes
1D	Dulce very channery fine sandy loam, 15 to 30 percent slopes
2B	Bond very fine sandy loam, 1 to 8 percent slopes
3A	Zyme – Dulce complex, 2 to 8 percent slopes
3BC	Zyme – Dulce complex, 2 to 15 percent slopes
3C	Zyme – Dulce complex, 6 to 15 percent slopes
3D	Zyme – Dulce complex, 15 to 30 percent slopes
3DE	Zyme – Dulce complex, 15 to 50 percent slopes
3E	Zyme – Dulce complex, 30 to 50 percent slopes
3F	Ustic Torriorthents – Rock outcrop complex, 50 to 80 percent slopes
4A	Zyme very channery loam, 1 to 4 percent slopes
4B	Zyme very channery loam, 4 to 8 percent slopes
4C	Zyme very channery loam, 8 to 15 percent slopes
4D	Zyme very channery loam, 15 to 30 percent slopes







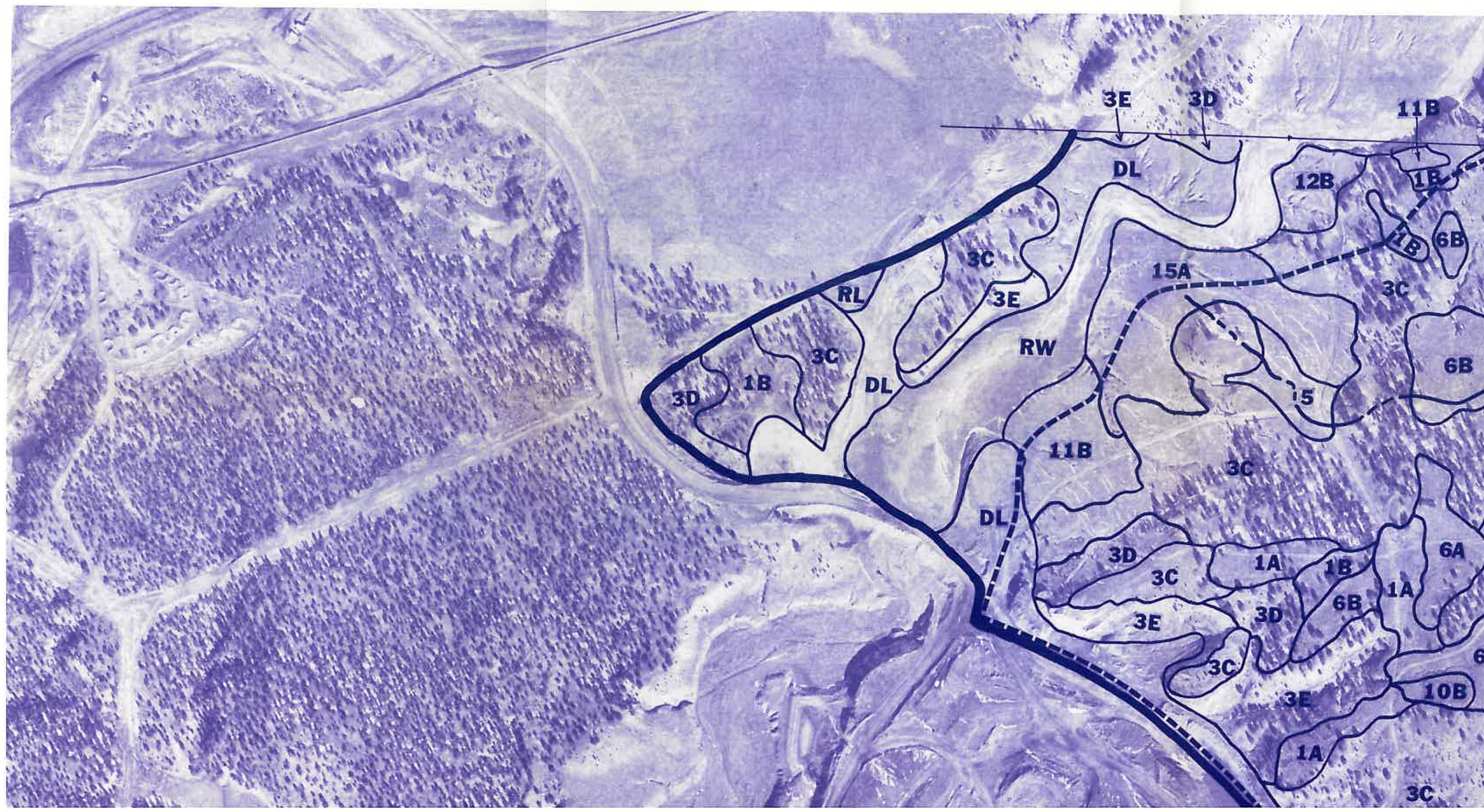
### Match Line (Sheet 2)













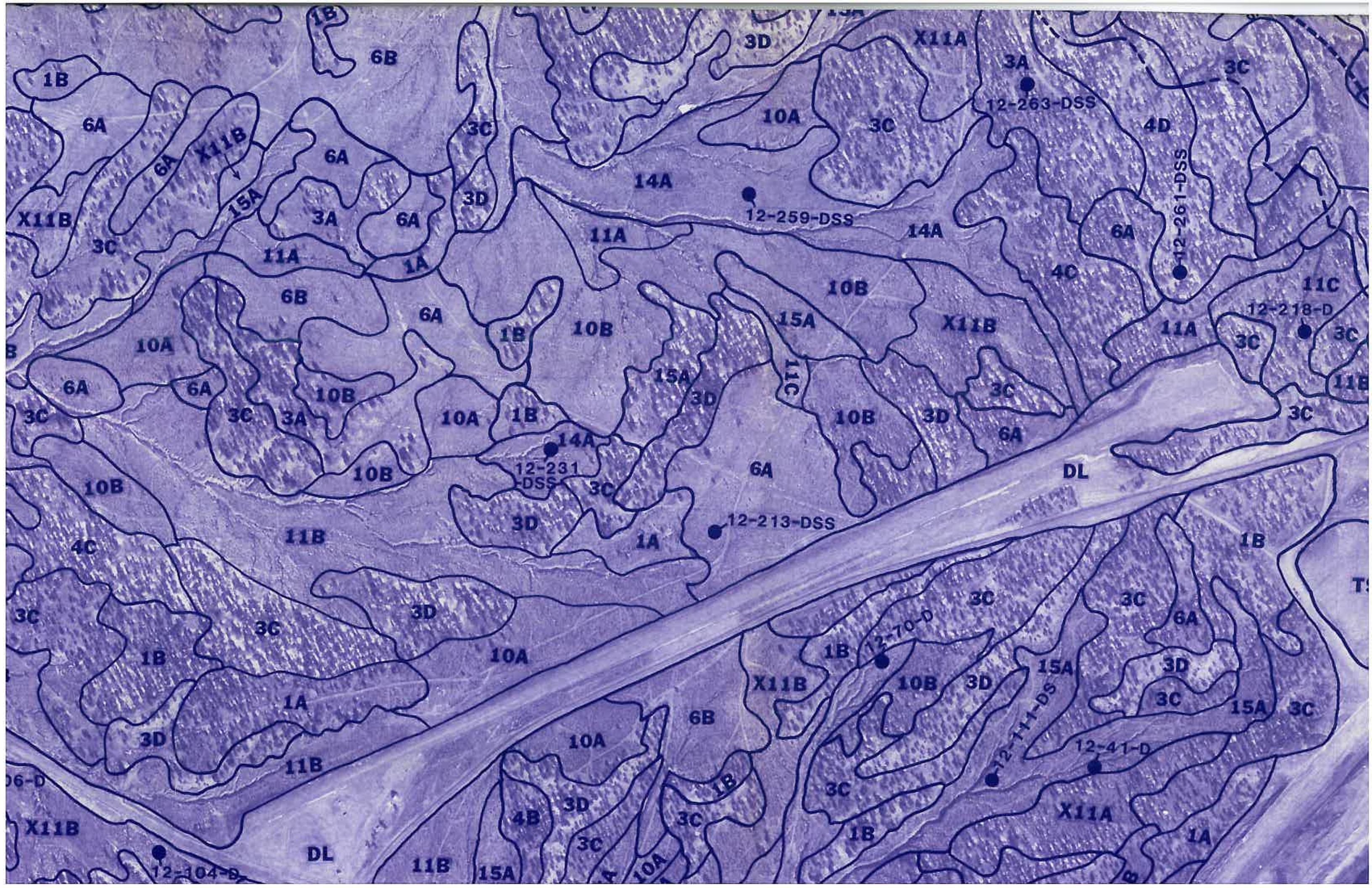


- 1C Dulce very channery fine sandy loam, 8 to 15 percent slopes
- 1D Dulce very channery fine sandy loam, 15 to 30 percent slopes
- 2B Bond very fine sandy loam, 1 to 8 percent slopes
- 3A Zyme - Dulce complex, 2 to 8 percent slopes
- 3BC Zyme - Dulce complex, 2 to 15 percent slopes
- 3C Zyme - Dulce complex, 6 to 15 percent slopes
- 3D Zyme - Dulce complex, 15 to 30 percent slopes
- 3DE Zyme - Dulce complex, 15 to 50 percent slopes
- 3E Zyme - Dulce complex, 30 to 50 percent slopes
- 3F Ustic Torriorthents - Rock outcrop complex, 50 to 80 percent slopes
- 4A Zyme very channery loam, 1 to 4 percent slopes
- 4B Zyme very channery loam, 4 to 8 percent slopes
- 4C Zyme very channery loam, 8 to 15 percent slopes
- 4D Zyme very channery loam, 15 to 30 percent slopes
- 5 Pulpit very fine sandy loam, 2 to 8 percent slopes
- 6 Sharps very fine sandy loam, 2 to 8 percent slopes
- 6A Sharps very fine sandy loam, 1 to 4 percent slopes
- 6B Sharps very fine sandy loam, 4 to 8 percent slopes
- 6C Sharps very fine sandy loam, 8 to 15 percent slopes
- 7B Travessilla - Zyme - Dulce complex, 2 to 6 percent slopes
- 7C Zyme - Travessilla - Rock outcrop complex, 6 to 15 percent slopes
- 7D Zyme - Travessilla - Rock outcrop complex, 15 to 30 percent slopes
- 7E Zyme - Travessilla - Rock outcrop complex, 30 to 50 percent slopes
- 10 Cahona very fine sandy loam, bedrock substratum, 2 to 8 percent slopes
- 10A Cahona very fine sandy loam, bedrock substratum, 1 to 4 percent slopes
- 10B Cahona very fine sandy loam, bedrock substratum, 4 to 8 percent slopes
- 10C Cahona very fine sandy loam, bedrock substratum, 8 to 15 percent slopes
- 11 Cahona very fine sandy loam, 1 to 6 percent slopes
- 11A Cahona very fine sandy loam, 1 to 4 percent slopes
- 11B Cahona very fine sandy loam, 4 to 8 percent slopes
- 11C Cahona very fine sandy loam, 8 to 15 percent slopes









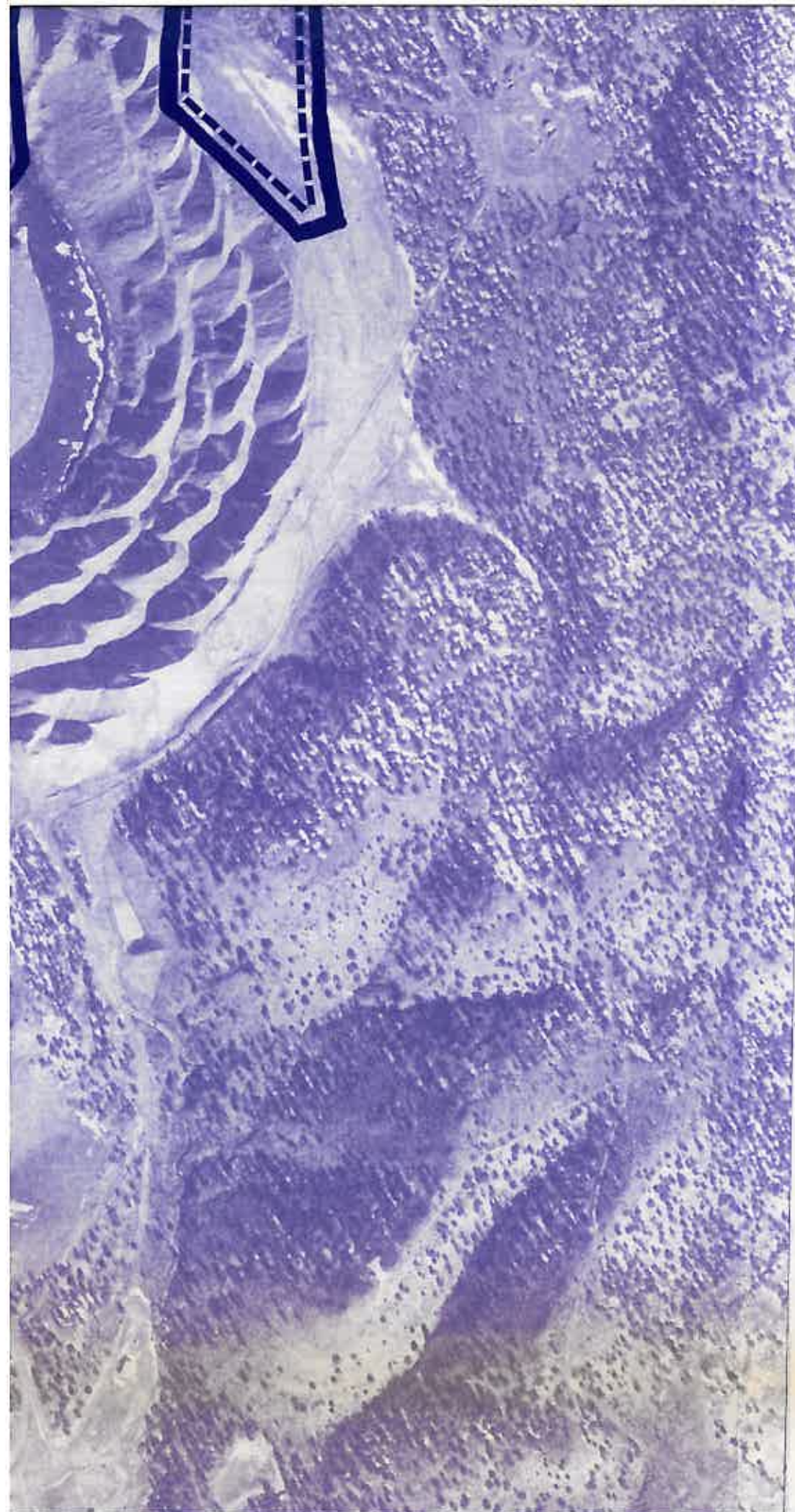






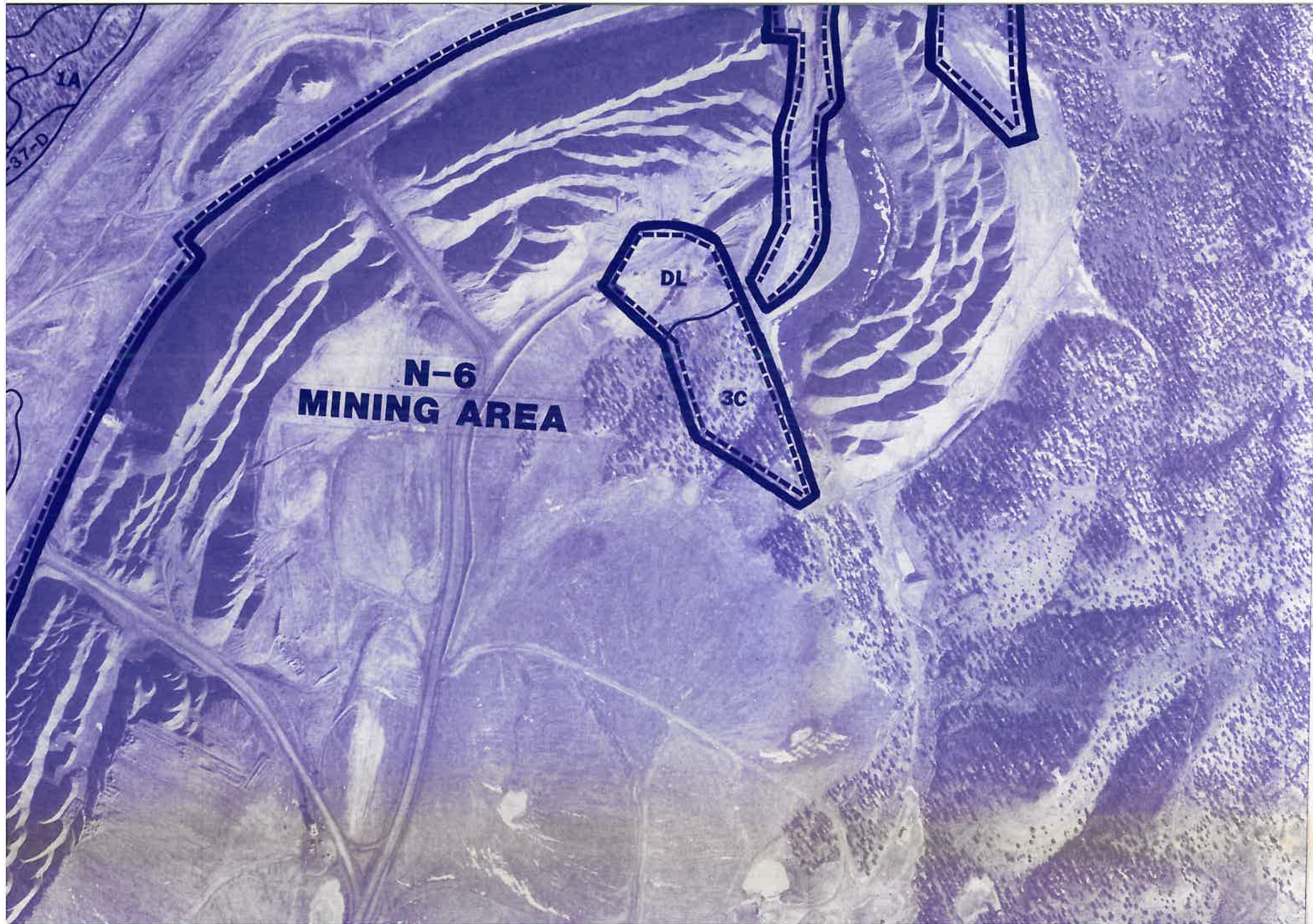






11	Cahona very fine sandy loam, 1 to 6 percent slopes
11A	Cahona very fine sandy loam, 1 to 4 percent slopes
11B	Cahona very fine sandy loam, 4 to 8 percent slopes
11C	Cahona very fine sandy loam, 8 to 15 percent slopes
G11B	Cahona very fine sandy loam, gravelly substratum, 2 to 8 percent slopes
X11	Cahona - Cahona, bedrock substratum, very fine sandy loams, 2 to 10 percent slopes
X11A	Cahona - Cahona, bedrock substratum, very fine sandy loams, 1 to 4 percent slopes
X11B	Cahona - Cahona, bedrock substratum, very fine sandy loams, 4 to 8 percent slopes
X11C	Cahona - Cahona, bedrock substratum, very fine sandy loams, 8 to 15 percent slopes
12	Begay loam, 2 to 10 percent slopes
12A	Begay loam, 1 to 4 percent slopes
12B	Begay loam, 4 to 8 percent slopes
12C	Begay loam, 8 to 15 percent slopes
13, 13A	San Mateo loam, 0 to 3 percent slopes
14A	Oelop very fine sandy loam, 1 to 4 percent slopes
14B	Oelop very fine sandy loam, 4 to 8 percent slopes
15, 15A	Las Lucas sandy clay loam, 2 to 6 percent slopes
16C	Soil A - Soil B extremely channery very fine sandy loams, 4 to 15 percent slopes
16E	Soil A - Soil B extremely channery very fine sandy loams, 15 to 50 percent slopes
16F	Soil A - Soil B extremely channery very fine sandy loams, 50 to 70 percent slopes
17C	Chilton gravelly fine sandy loam, 6 to 15 percent slopes
DL	Disturbed land
TS	Topsoil stockpile
RW	Riverwash
W	Water
-----	Disturbance boundary
=====	Survey area boundary
-----	Crop line
●	Soil sampling site
~~~~~	Mapping unit delineation
	Moist/dry phase demarcation

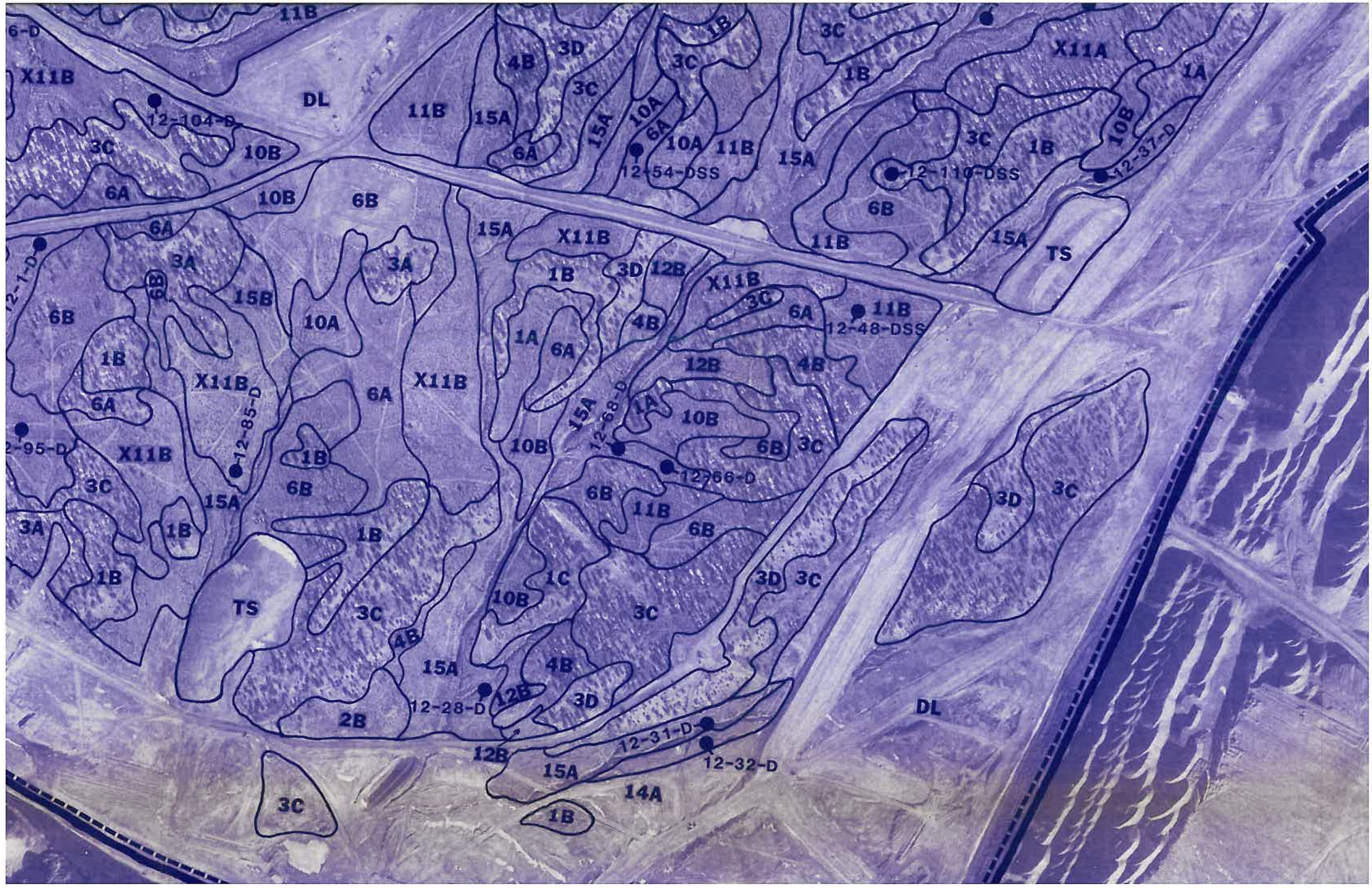




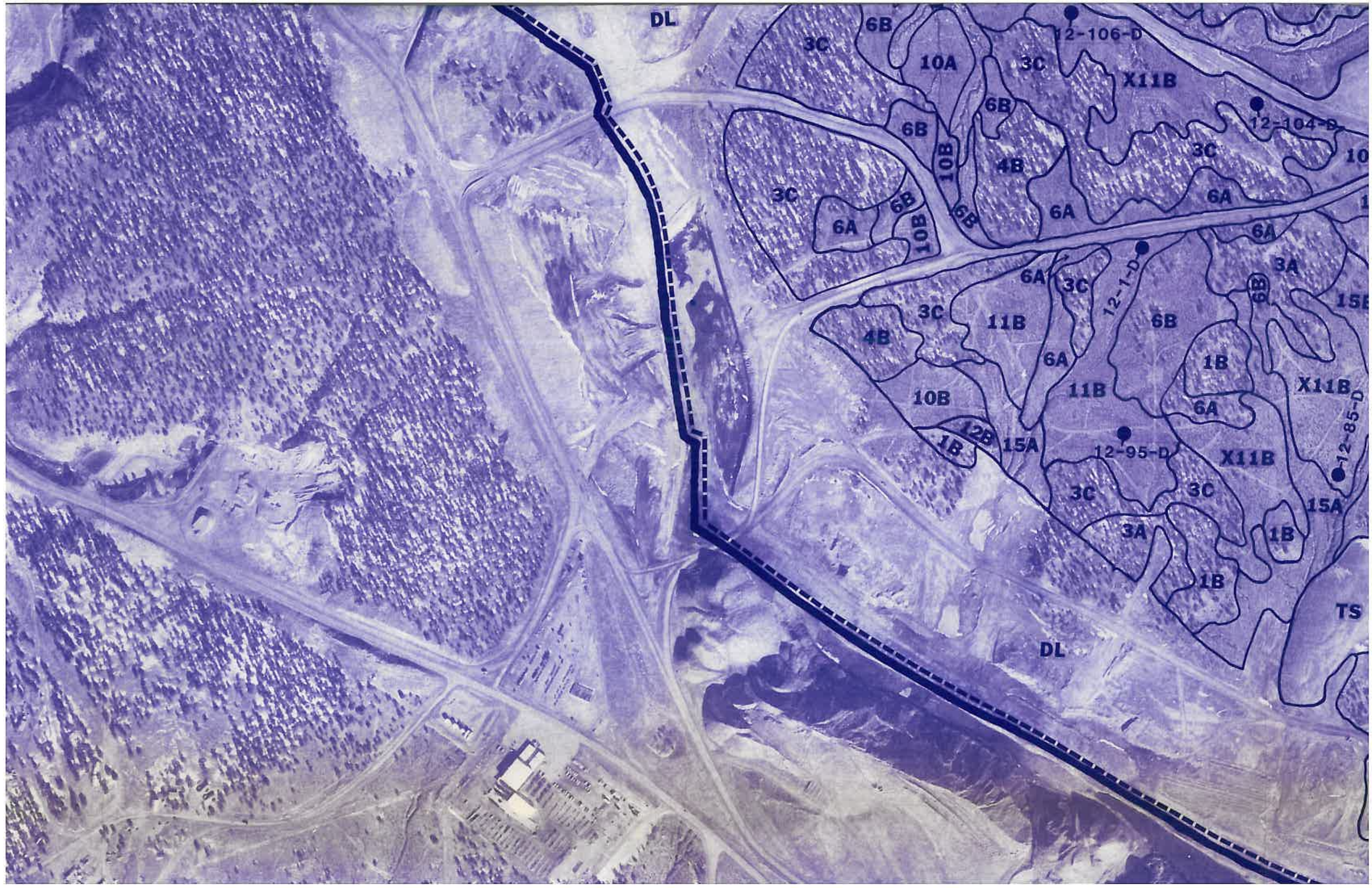
1  
1  
1  
1  
G  
X  
X  
X  
X  
12  
12  
12  
12  
13  
14  
14  
15  
16  
16  
16  
17  
DL  
TS  
RW  
W



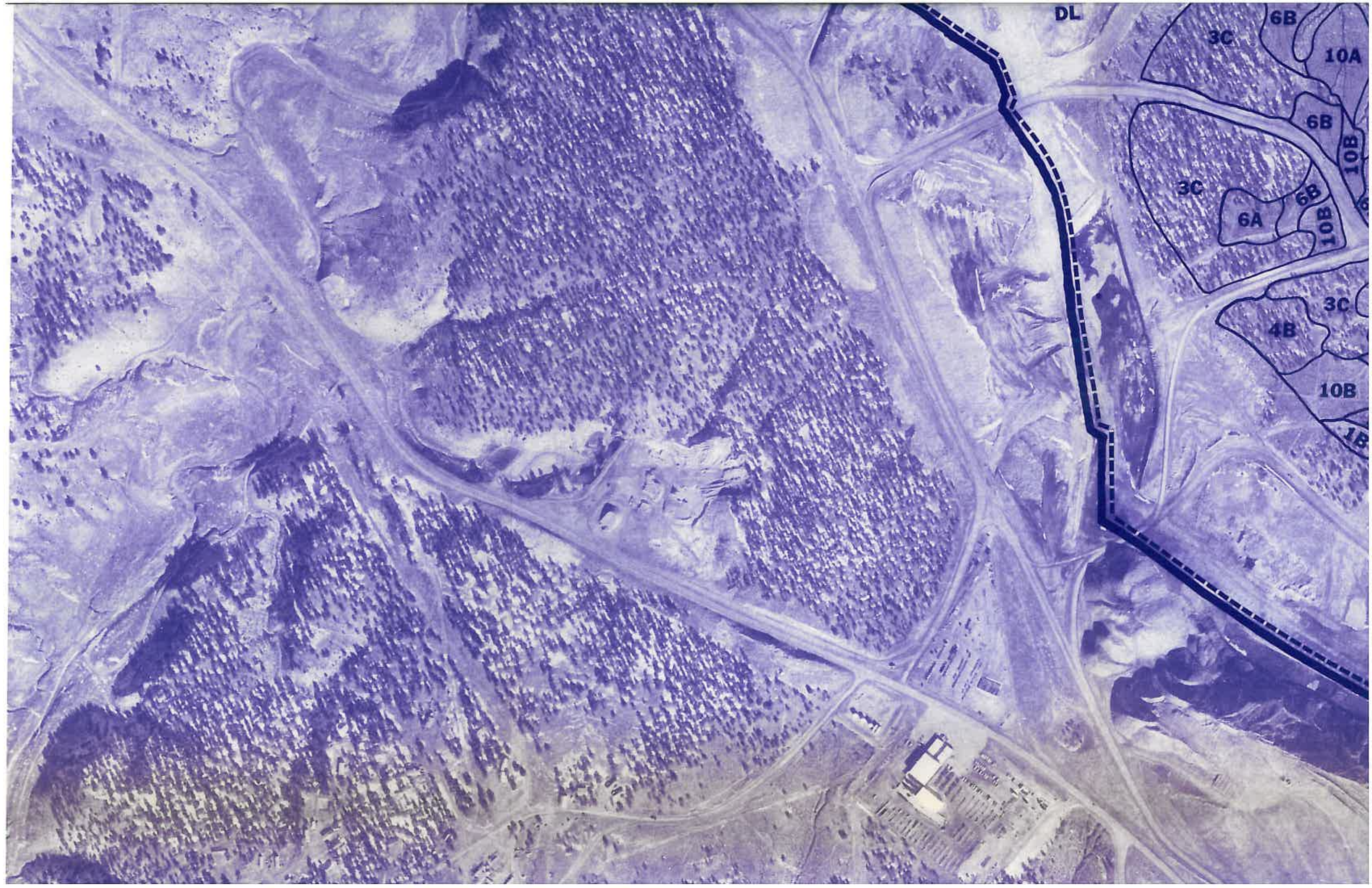




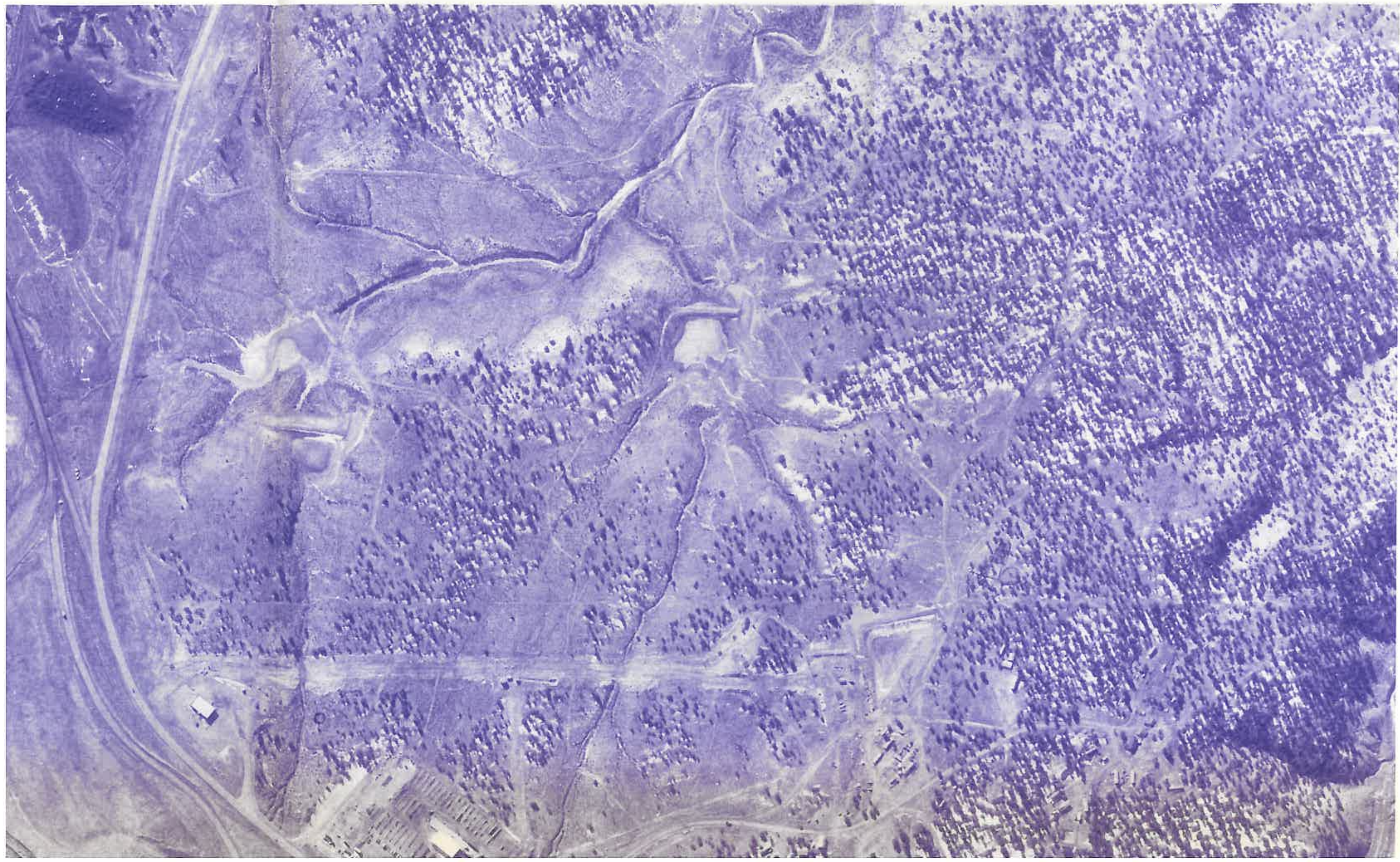




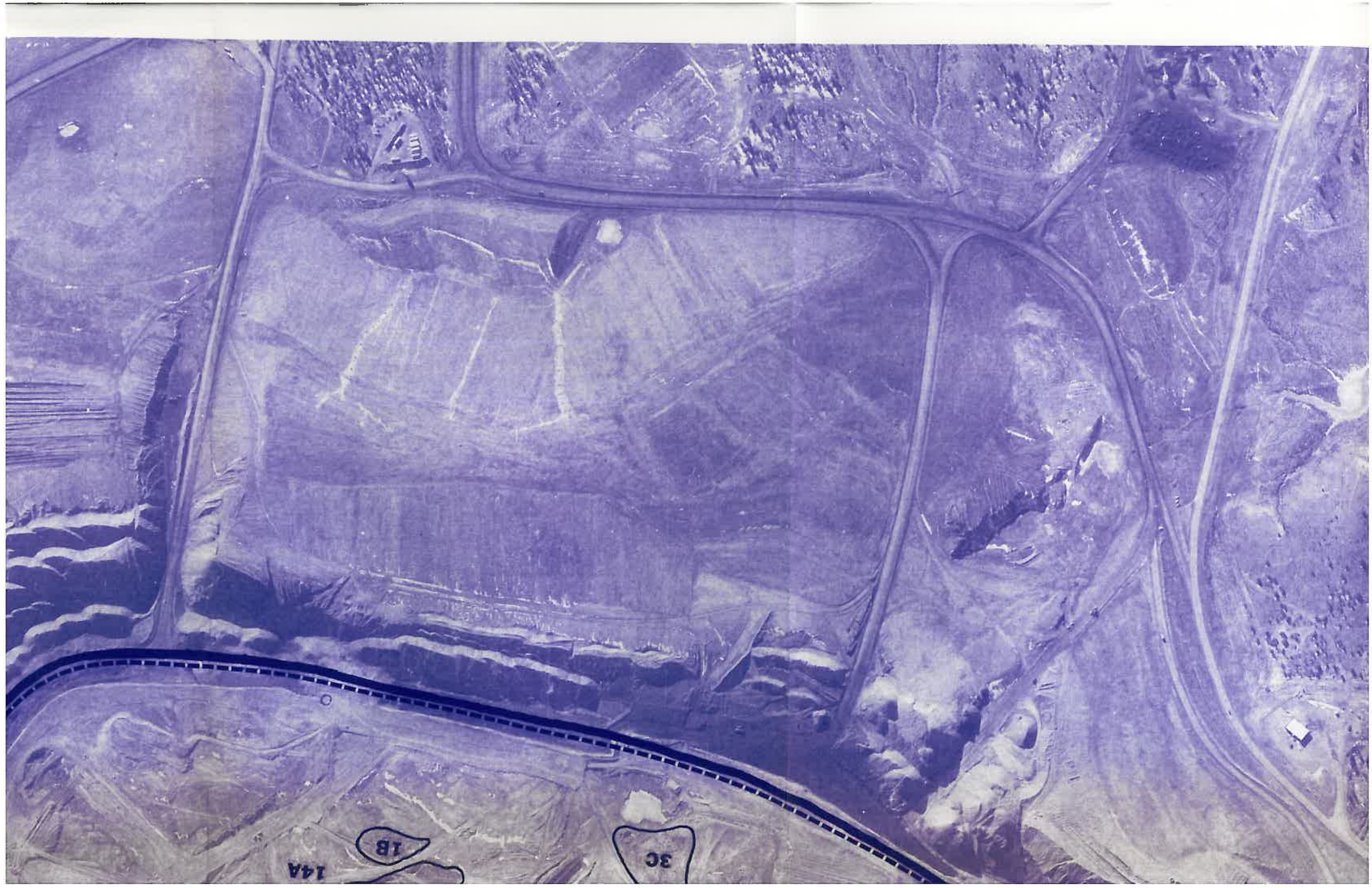




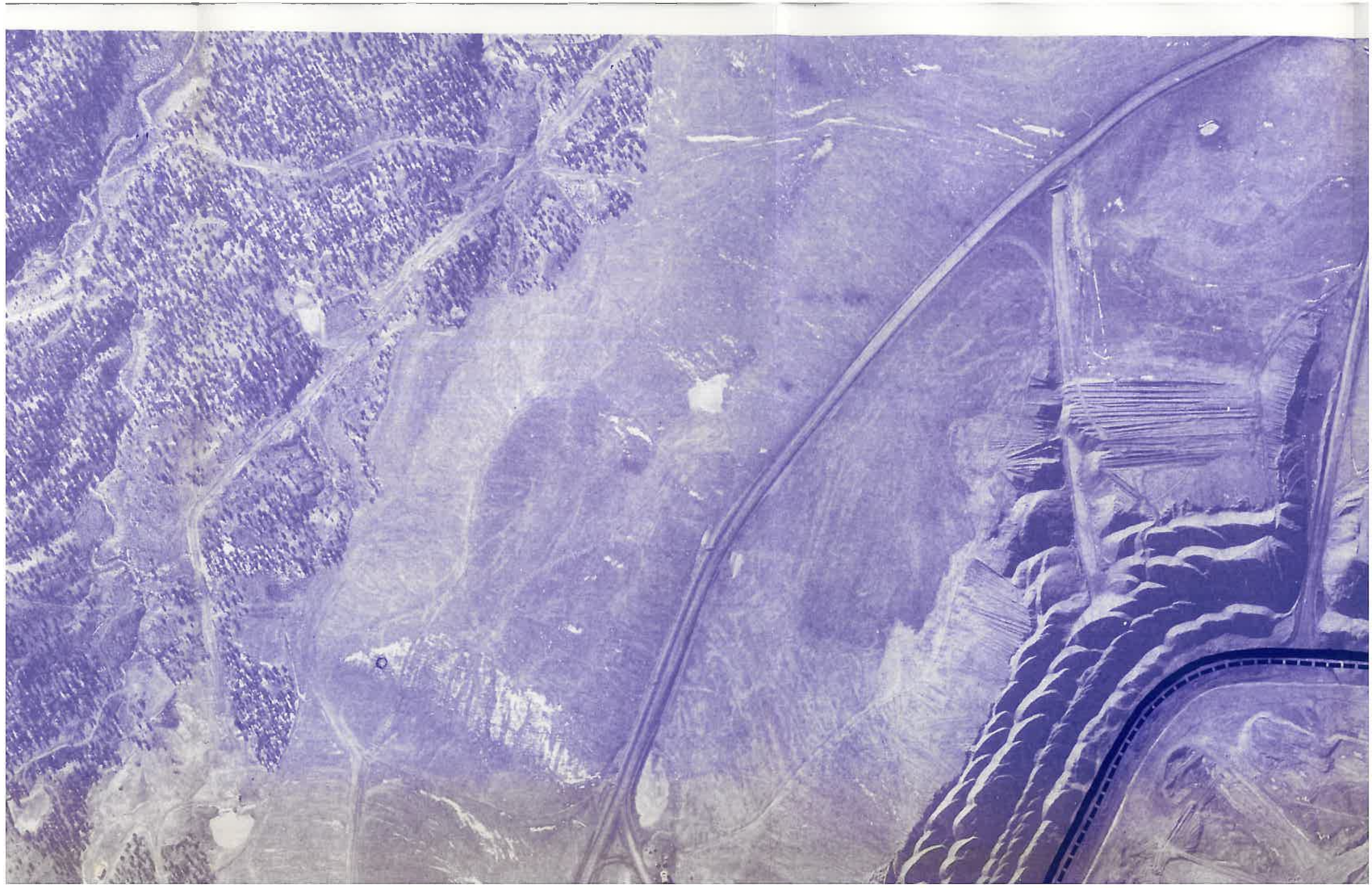




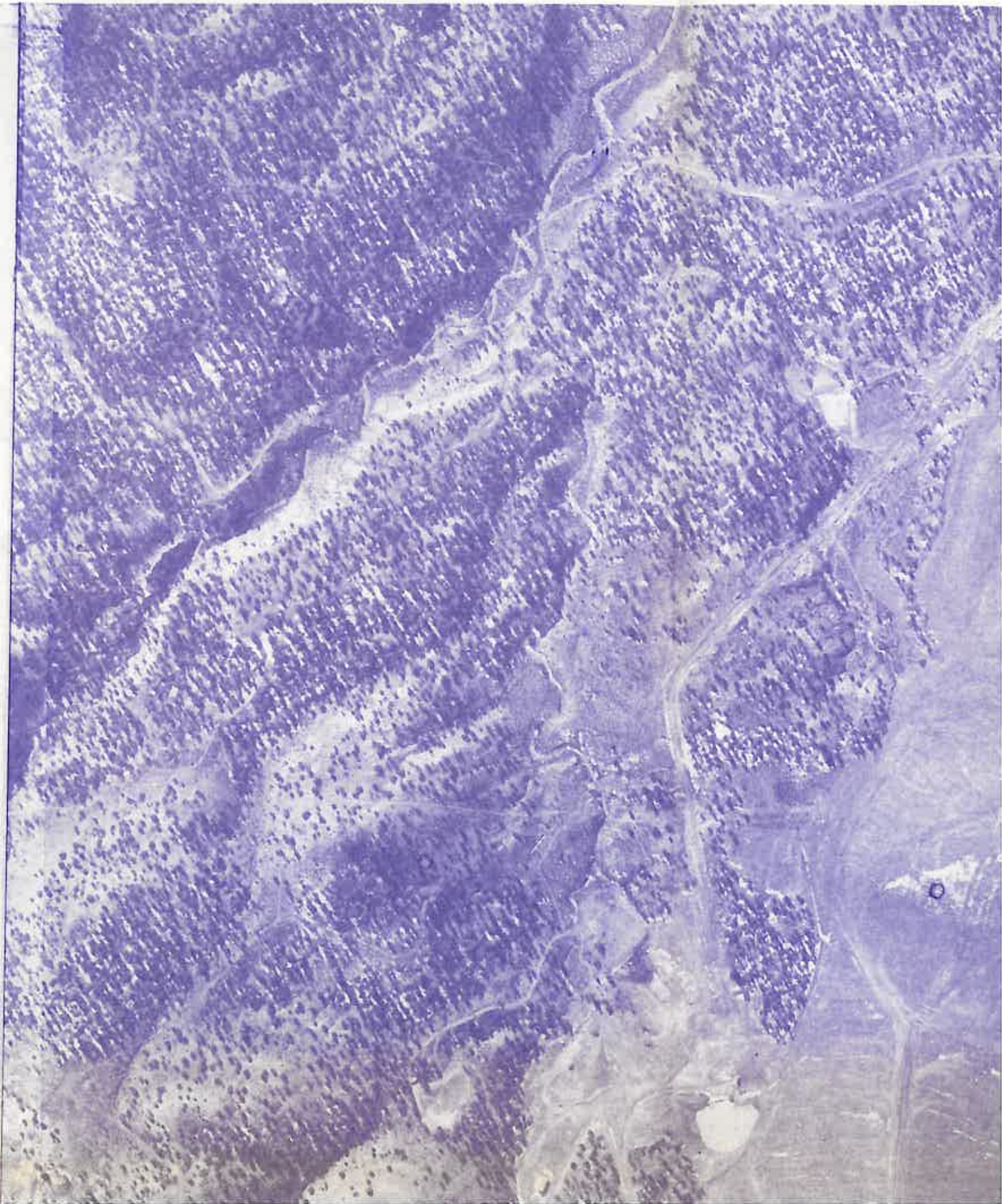








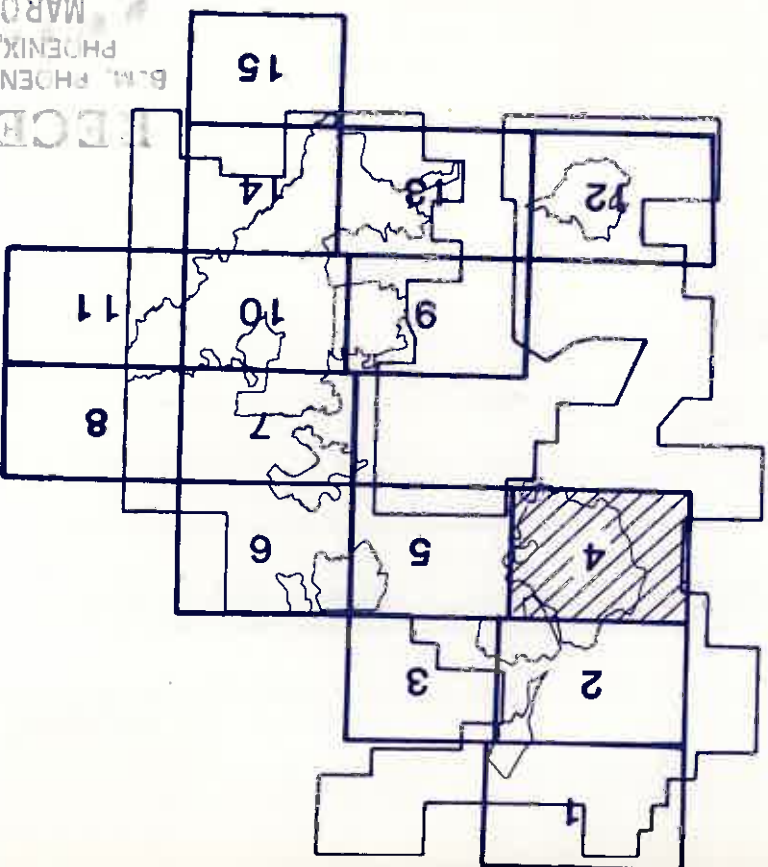




-----  
-----  
-----

Disturbance boundary  
Survey area boundary

Soil sampl  
Mapping  
Moist/dr



RECEIVED  
B.M. PHOENIX  
MAR 03

PEABODY COAL COMPANY  
BLACK MESA-KAYENTA MINE  
P.O. BOX 625  
KAYENTA, ARIZONA 86033

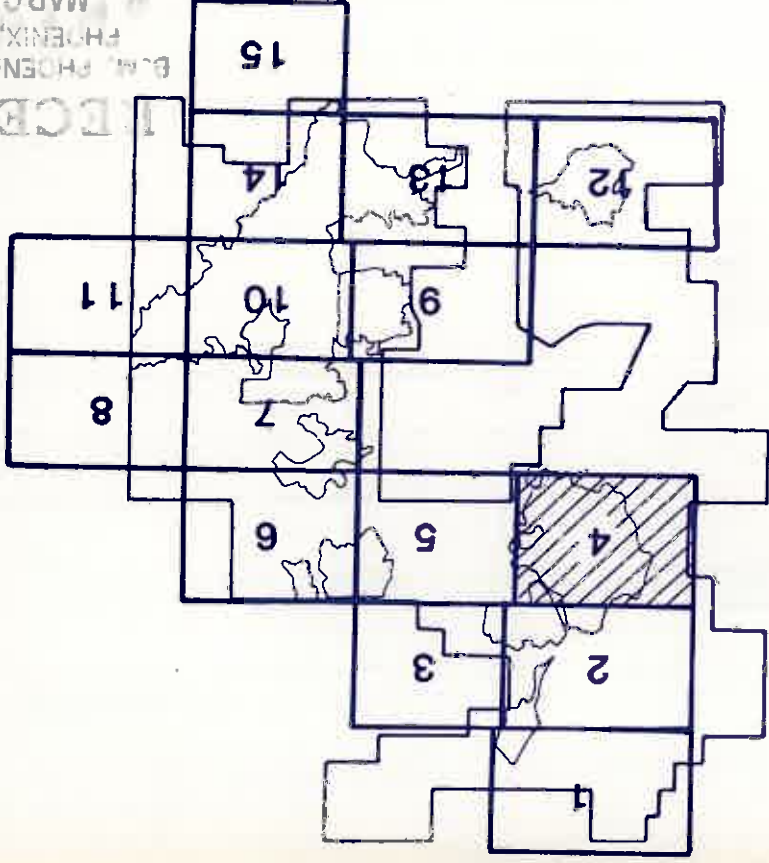
ORDER 1 AND 2 SOIL SURVEY		DRG No		86301		SHEET 4 of 1	
DRAWN BY		PJN		DATE		Nov. 8	
SCALE		1"=400'		C.L.		N/A	
DRAWN BY		AP'D BY		DATE		REVISION DESCRIPTION	
1							
2							
3							
4							

Prepared by: **INTERMOUNTAIN, INC.**



Soil sampling site  
Mapping unit delineation  
Moist/dry phase demarcation

Survey area boundary  
Crop line



RECEIVED  
B.M. PHOENIX DIST. OFF.  
PHOENIX, ARIZONA  
MAR 3 1988

PEABODY COAL COMPANY  
BLACK MESA-KAYENTA MINE  
P.O. BOX 625  
KAYENTA, ARIZONA 86033

ORG. NO. 85305A		SHEET NO. 4 of 15		DRAWN BY PJN		DATE Nov. 85		SCALE: 1"=400'		C.L. N/A	
ORDER 1 AND 2		SOIL SURVEY		DATE		BY		APPROVED BY		REVISION DESCRIPTION	
PEABODY COAL COMPANY		KAYENTA, ARIZONA 86033		DATE		BY		APPROVED BY		REVISION DESCRIPTION	

INTERMOUNTAIN, INC.

