

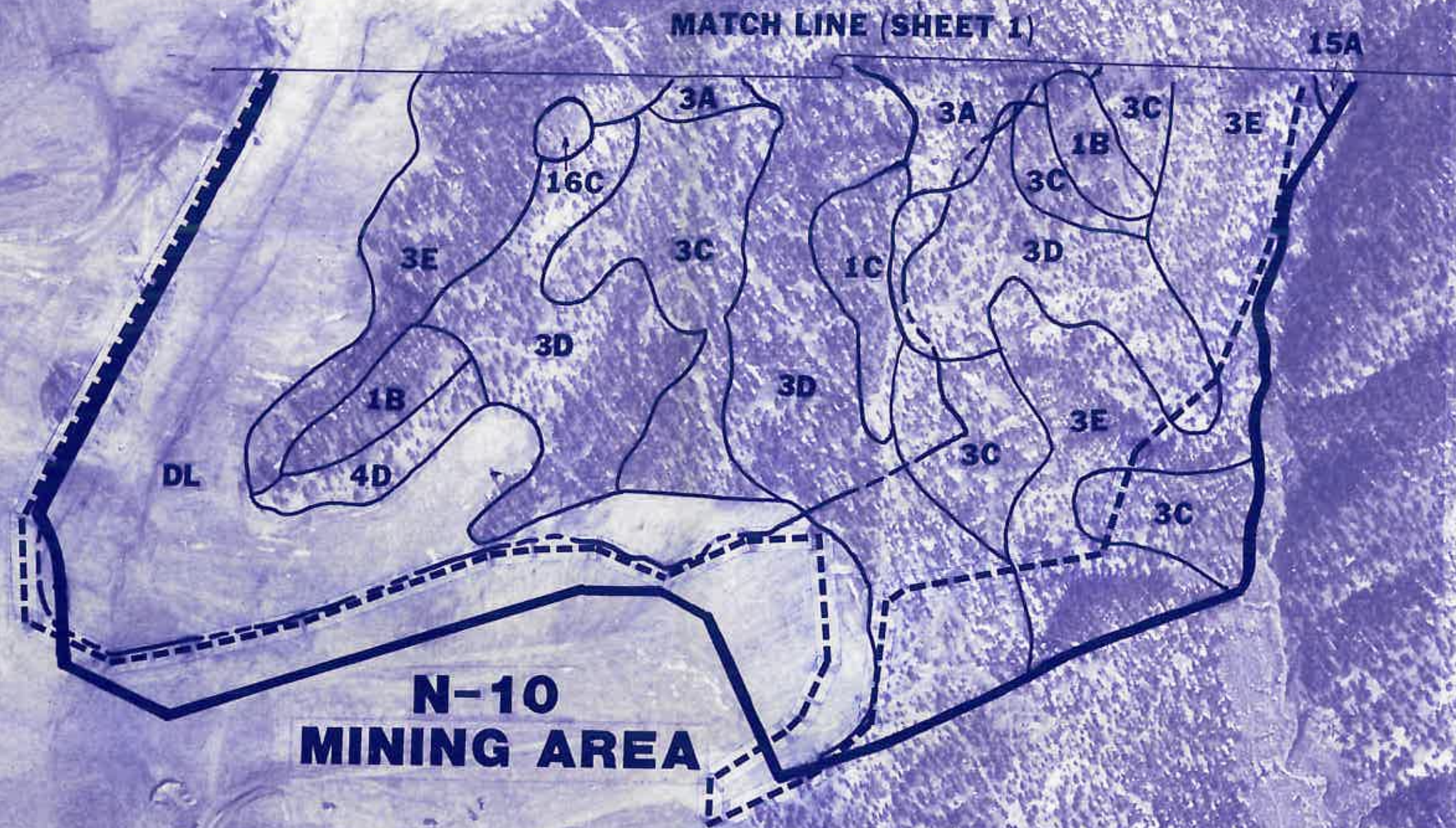
PEABODY COAL COMPANY BLACK MESA - KAYENTA MINE DRAWING NO. 85305A

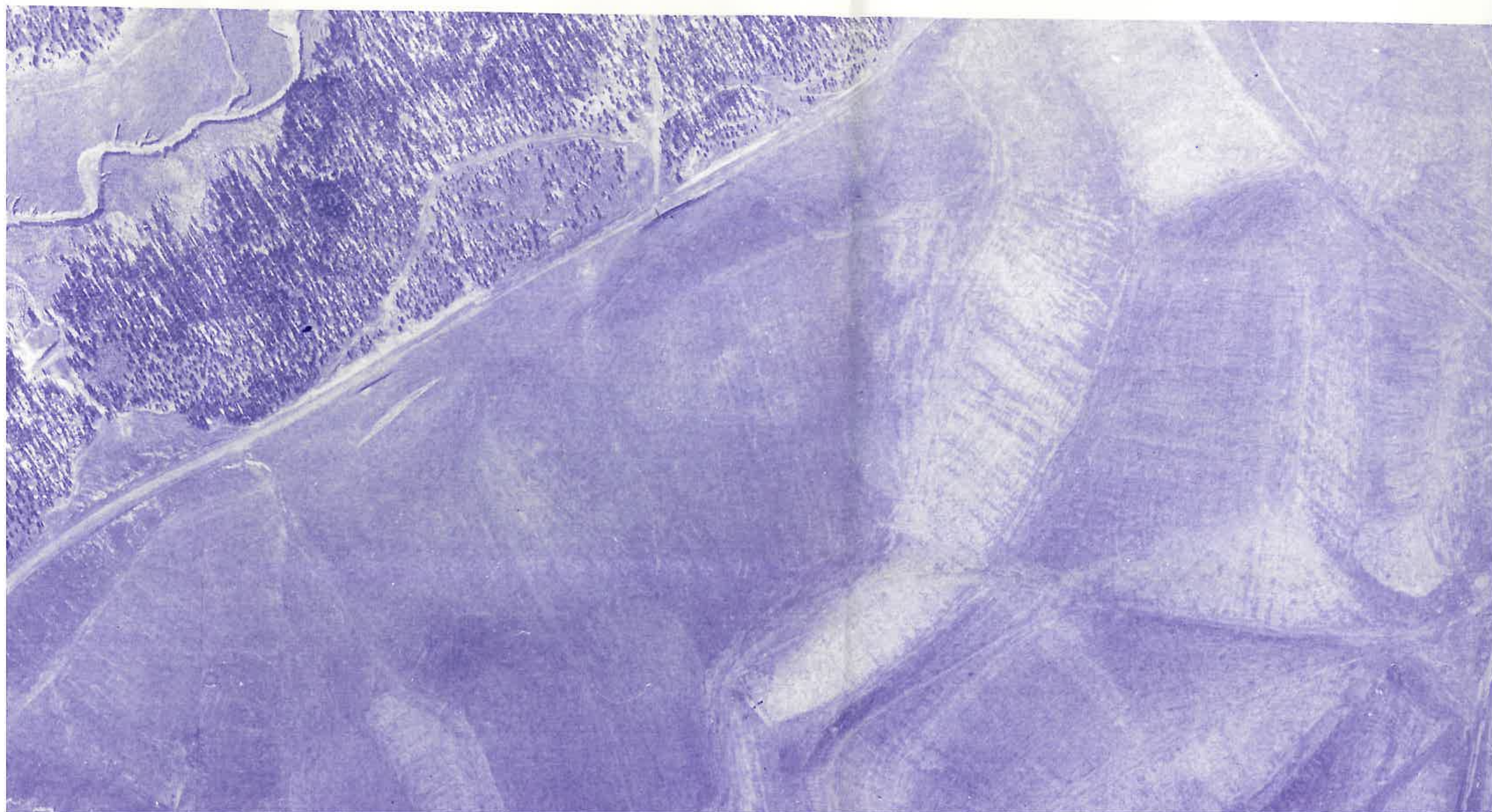
LEGEND

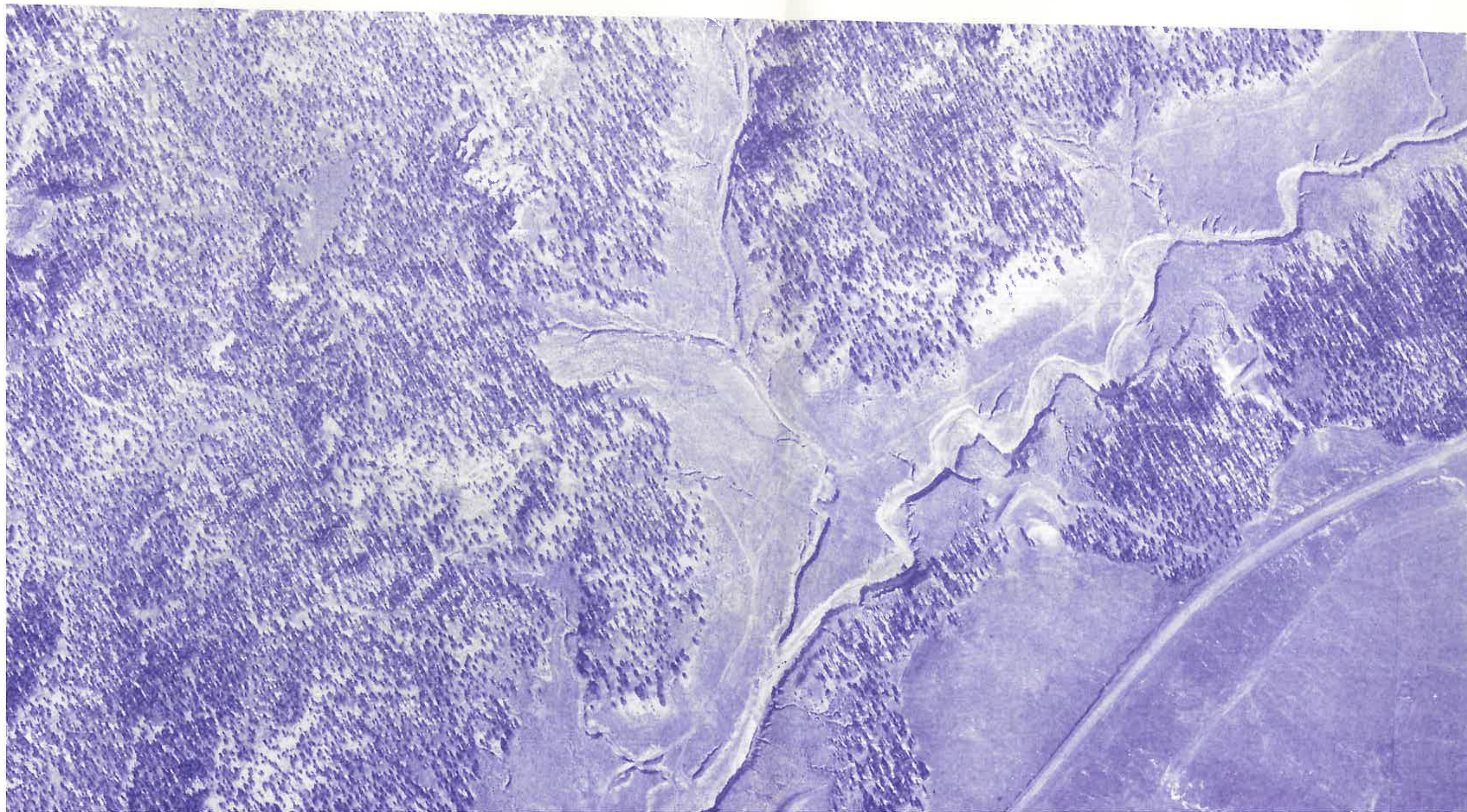
Symbol

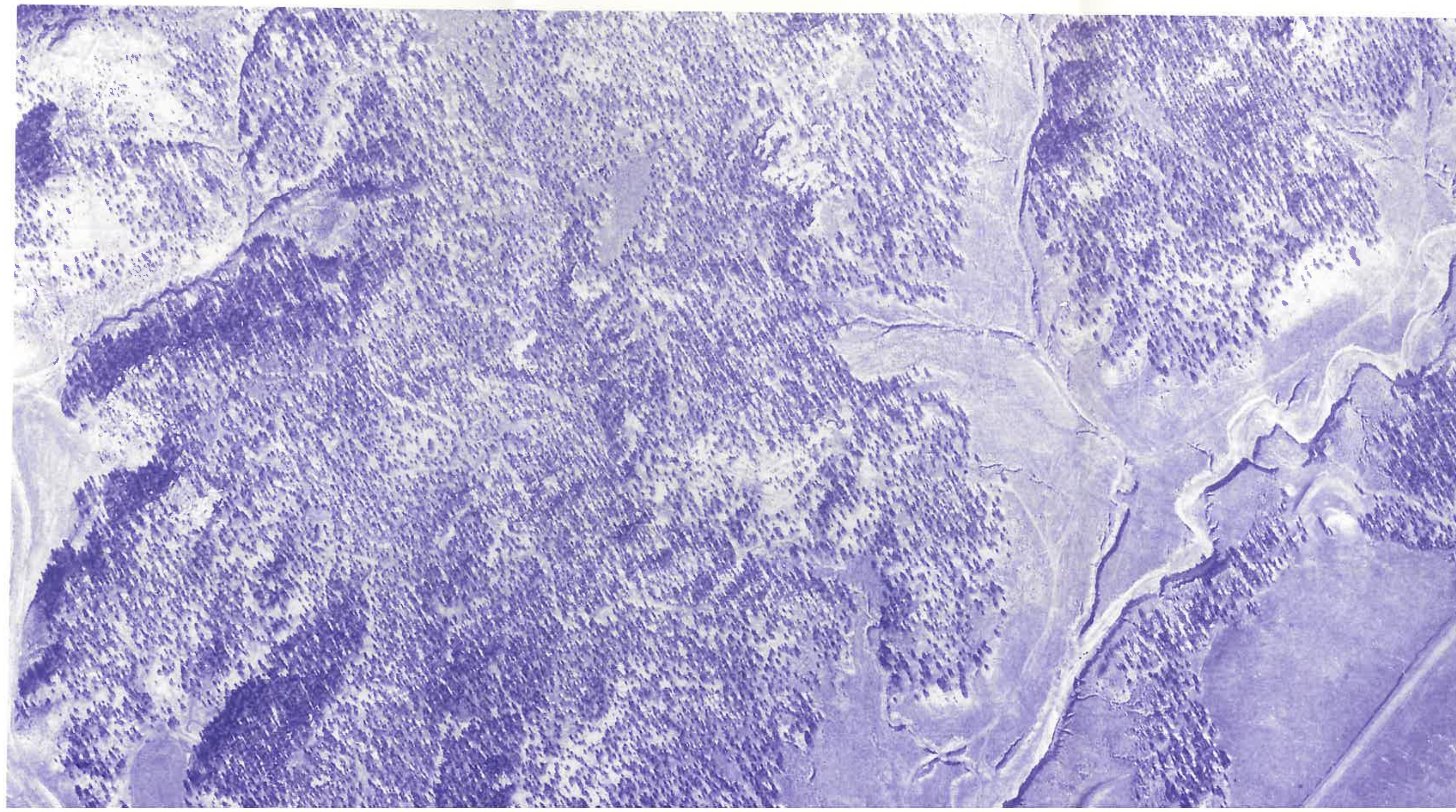
Name

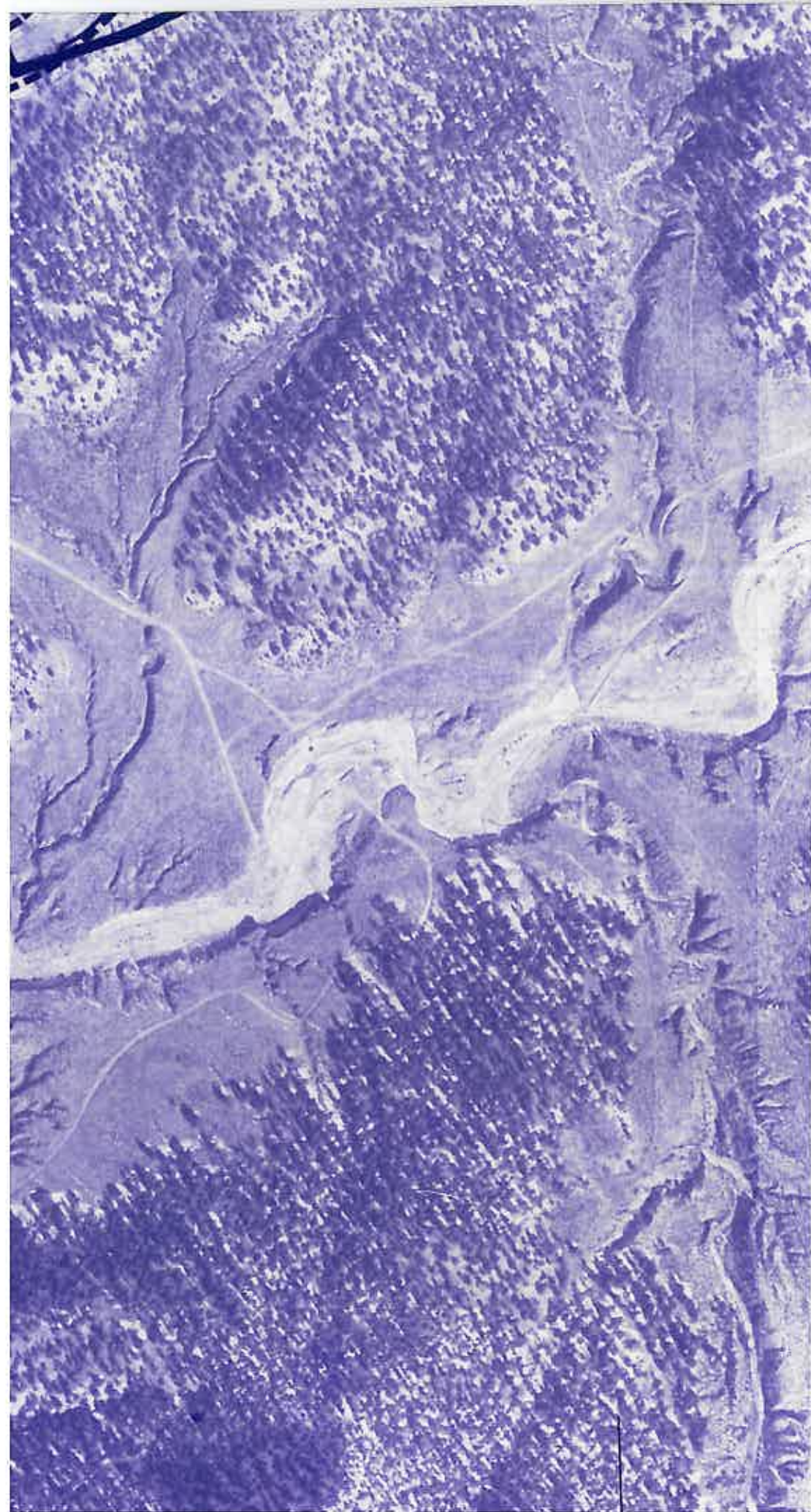
1A	Dulce very channery fine sandy loam, 1 to 4 percent slopes
1, 1B	Dulce very channery fine sandy loam, 4 to 8 percent slopes
1C	Dulce very channery fine sandy loam, 8 to 15 percent slopes
1D	Dulce very channery fine sandy loam, 15 to 30 percent slopes
2B	Bond very fine sandy loam, 1 to 8 percent slopes
3A	Zyme - Dulce complex, 2 to 8 percent slopes
3BC	Zyme - Dulce complex, 2 to 15 percent slopes
3C	Zyme - Dulce complex, 6 to 15 percent slopes
3D	Zyme - Dulce complex, 15 to 30 percent slopes
3DE	Zyme - Dulce complex, 15 to 50 percent slopes
3E	Zyme - Dulce complex, 30 to 50 percent slopes
3F	Ustic Torriorthents - Rock outcrop complex, 50 to 80 percent slopes
4A	Zyme very channery loam, 1 to 4 percent slopes
4B	Zyme very channery loam, 4 to 8 percent slopes
4C	Zyme very channery loam, 8 to 15 percent slopes
4D	Zyme very channery loam, 15 to 30 percent slopes





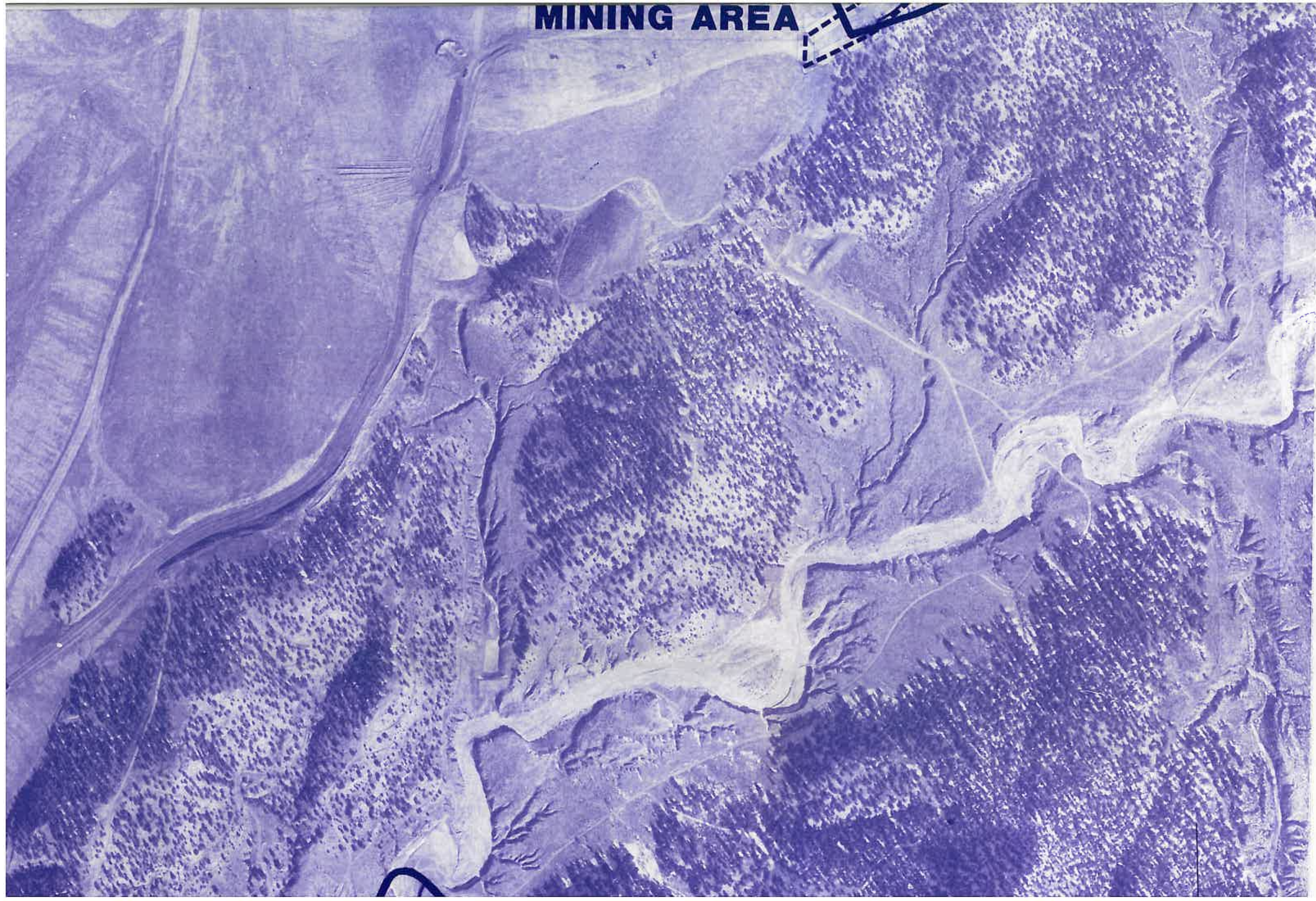




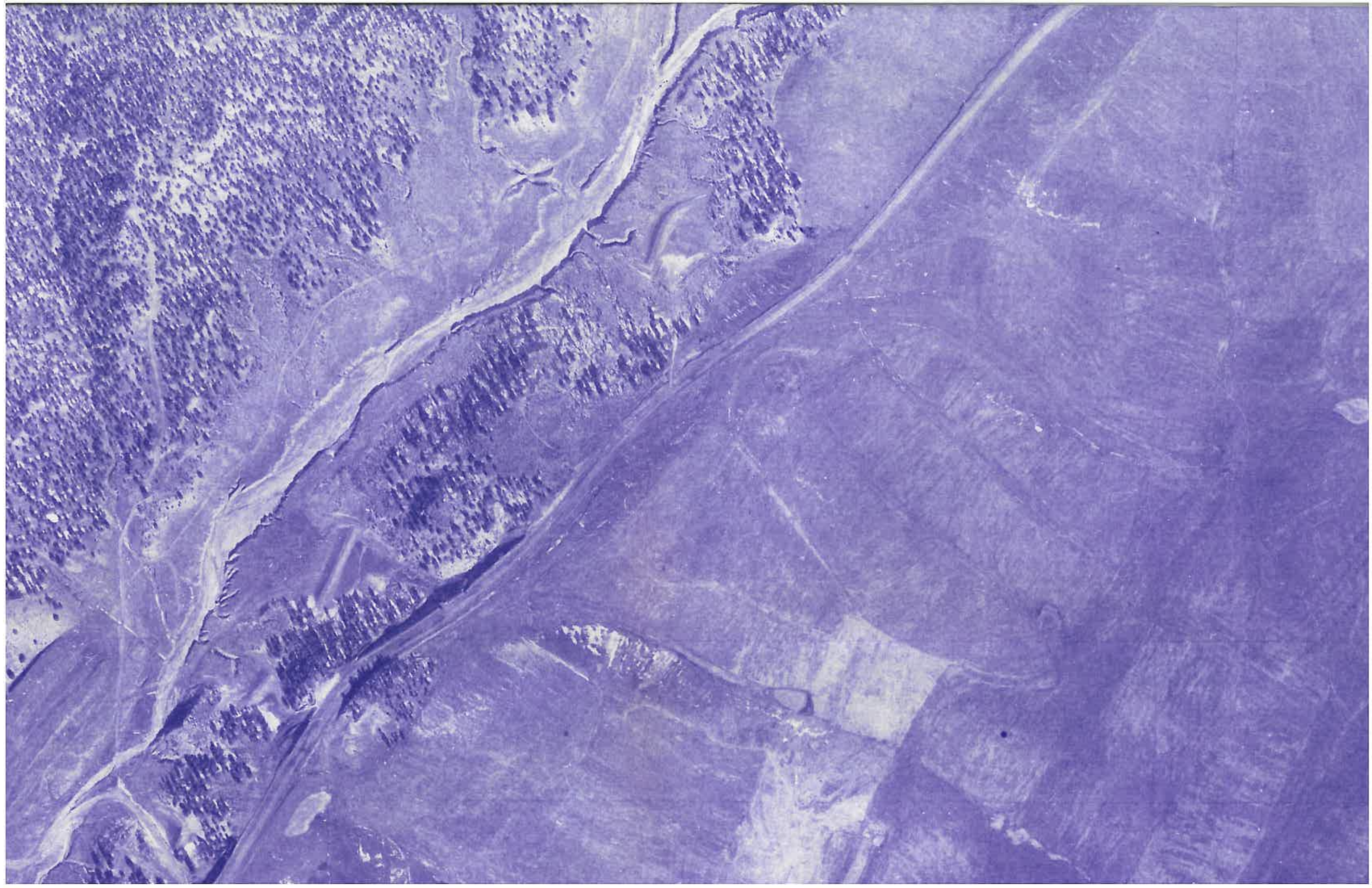


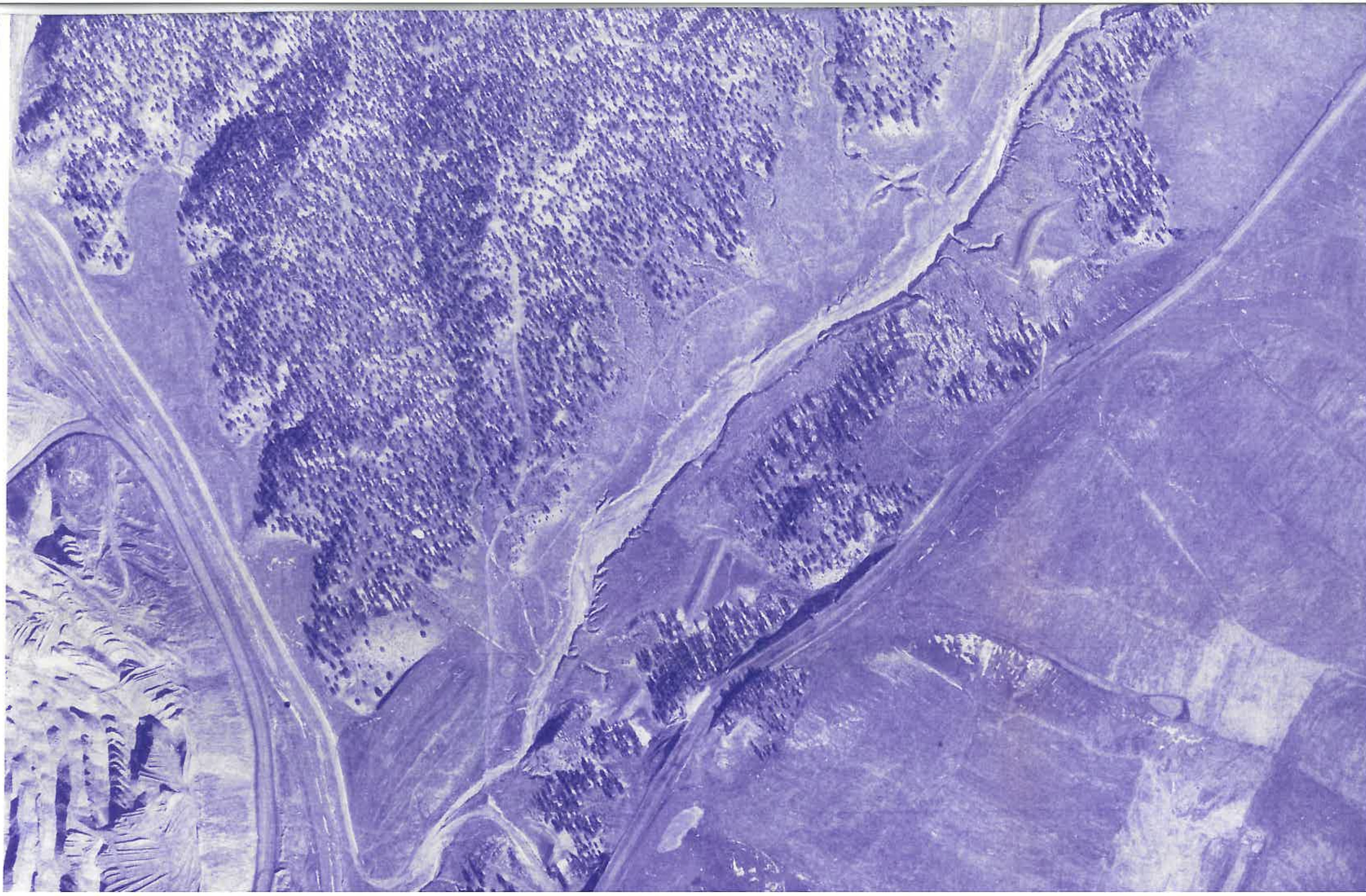
- 3D Zyme – Dulce complex, 15 to 30 percent slopes
- 3DE Zyme – Dulce complex, 15 to 50 percent slopes
- 3E Zyme – Dulce complex, 30 to 50 percent slopes
- 3F Ustic Torriorthents – Rock outcrop complex, 50 to 80 percent slopes
- 4A Zyme very channery loam, 1 to 4 percent slopes
- 4B Zyme very channery loam, 4 to 8 percent slopes
- 4C Zyme very channery loam, 8 to 15 percent slopes
- 4D Zyme very channery loam, 15 to 30 percent slopes
- 5 Pulpit very fine sandy loam, 2 to 8 percent slopes
- 6 Sharps very fine sandy loam, 2 to 8 percent slopes
- 6A Sharps very fine sandy loam, 1 to 4 percent slopes
- 6B Sharps very fine sandy loam, 4 to 8 percent slopes
- 6C Sharps very fine sandy loam, 8 to 15 percent slopes
- 7B Travessilla – Zyme – Dulce complex, 2 to 6 percent slopes
- 7C Zyme – Travessilla – Rock outcrop complex, 6 to 15 percent slopes
- 7D Zyme – Travessilla – Rock outcrop complex, 15 to 30 percent slopes
- 7E Zyme – Travessilla – Rock outcrop complex, 30 to 50 percent slopes
- 10 Cahona very fine sandy loam, bedrock substratum, 2 to 8 percent slopes
- 10A Cahona very fine sandy loam, bedrock substratum, 1 to 4 percent slopes
- 10B Cahona very fine sandy loam, bedrock substratum, 4 to 8 percent slopes
- 10C Cahona very fine sandy loam, bedrock substratum, 8 to 15 percent slopes
- 11 Cahona very fine sandy loam, 1 to 6 percent slopes
- 11A Cahona very fine sandy loam, 1 to 4 percent slopes
- 11B Cahona very fine sandy loam, 4 to 8 percent slopes
- 11C Cahona very fine sandy loam, 8 to 15 percent slopes
- G11B Cahona very fine sandy loam, gravelly substratum, 2 to 8 percent slopes
- X11 Cahona – Cahona, bedrock substratum, very fine sandy loams, 2 to 10 percent slopes
- X11A Cahona – Cahona, bedrock substratum, very fine sandy loams, 1 to 4 percent slopes
- X11B Cahona – Cahona, bedrock substratum, very fine sandy loams, 4 to 8 percent slopes
- X11C Cahona – Cahona, bedrock substratum, very fine sandy loams, 8 to 15 percent slopes

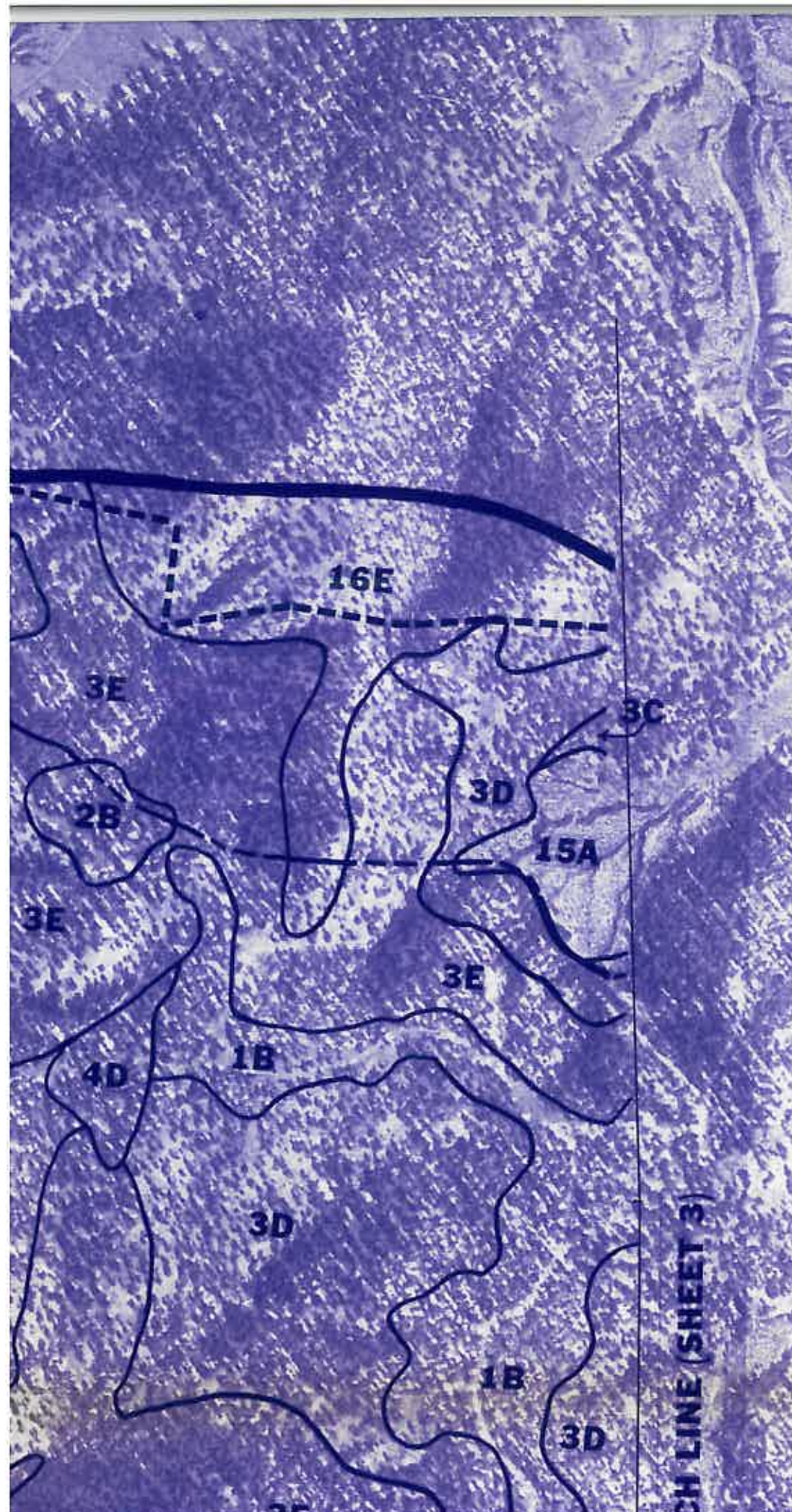
MINING AREA







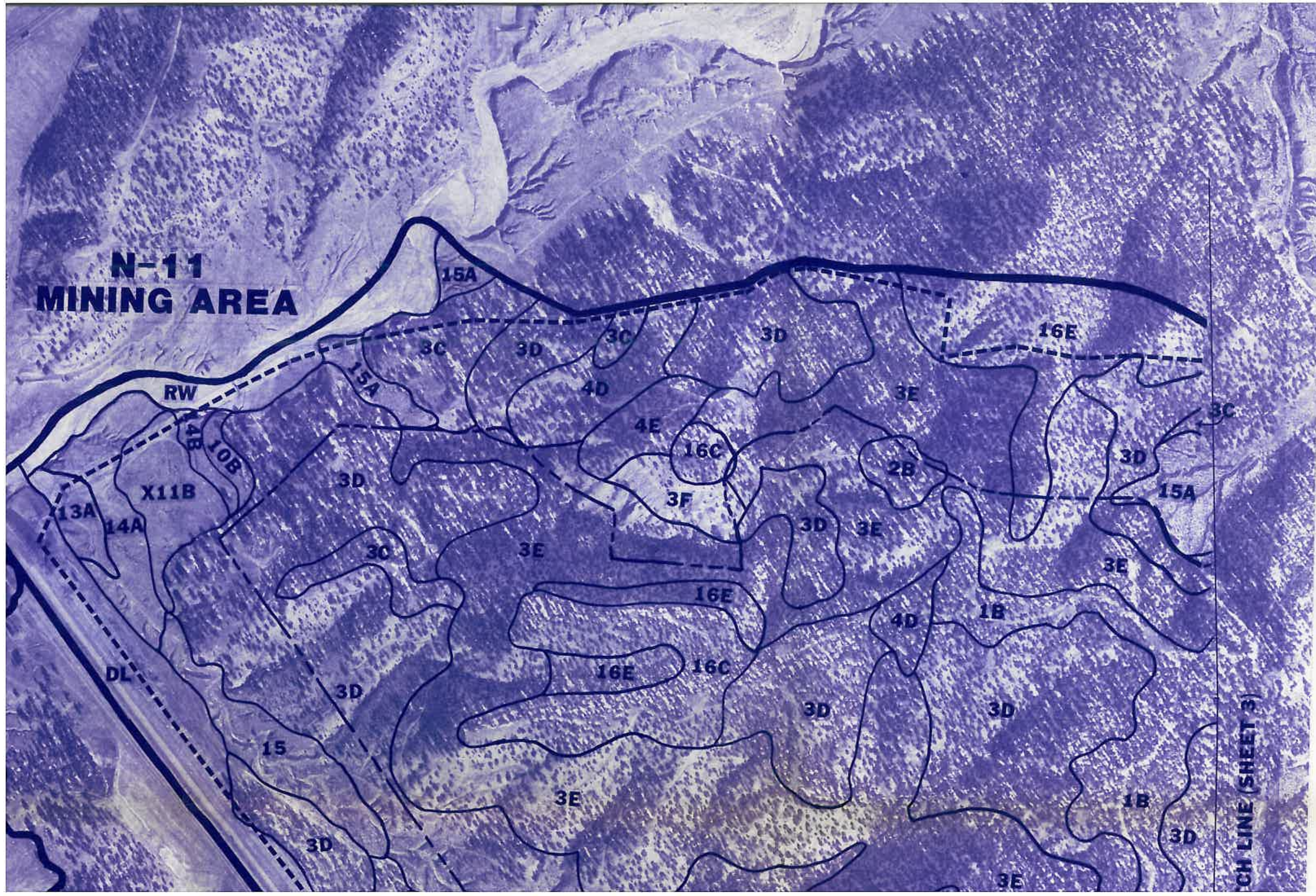




- 11A Cahona very fine sandy loam, 1 to 4 percent slopes
- 11B Cahona very fine sandy loam, 4 to 8 percent slopes
- 11C Cahona very fine sandy loam, 8 to 15 percent slopes
- G11B Cahona very fine sandy loam, gravelly substratum, 2 to 8 percent slopes
- X11 Cahona - Cahona, bedrock substratum, very fine sandy loams, 2 to 10 percent slopes
- X11A Cahona - Cahona, bedrock substratum, very fine sandy loams, 1 to 4 percent slopes
- X11B Cahona - Cahona, bedrock substratum, very fine sandy loams, 4 to 8 percent slopes
- X11C Cahona - Cahona, bedrock substratum, very fine sandy loams, 8 to 15 percent slopes
- 12 Begay loam, 2 to 10 percent slopes
- 12A Begay loam, 1 to 4 percent slopes
- 12B Begay loam, 4 to 8 percent slopes
- 12C Begay loam, 8 to 15 percent slopes
- 13, 13A San Mateo loam, 0 to 3 percent slopes
- 14A Oelop very fine sandy loam, 1 to 4 percent slopes
- 14B Oelop very fine sandy loam, 4 to 8 percent slopes
- 15, 15A Las Lucas sandy clay loam, 2 to 6 percent slopes
- 16C Soil A - Soil B extremely channery very fine sandy loams, 4 to 15 percent slopes
- 16E Soil A - Soil B extremely channery very fine sandy loams, 15 to 50 percent slopes
- 16F Soil A - Soil B extremely channery very fine sandy loams, 50 to 70 percent slopes
- 17C Chilton gravelly fine sandy loam, 6 to 15 percent slopes
- DL Disturbed land
- TS Topsoil stockpile
- RW Riverwash
- W Water
- Disturbance boundary
- ===== Survey area boundary
- - - - - Crop line
- Soil sampling site
- Mapping unit delineation
- Moist/dry phase demarcation



N-11 MINING AREA



CH LINE (SHEET 3)



**N-6
MINING AREA**

**N-11
MINING AREA**

RW

X11B

13A

14A

DL

DL

15A

3A

11B

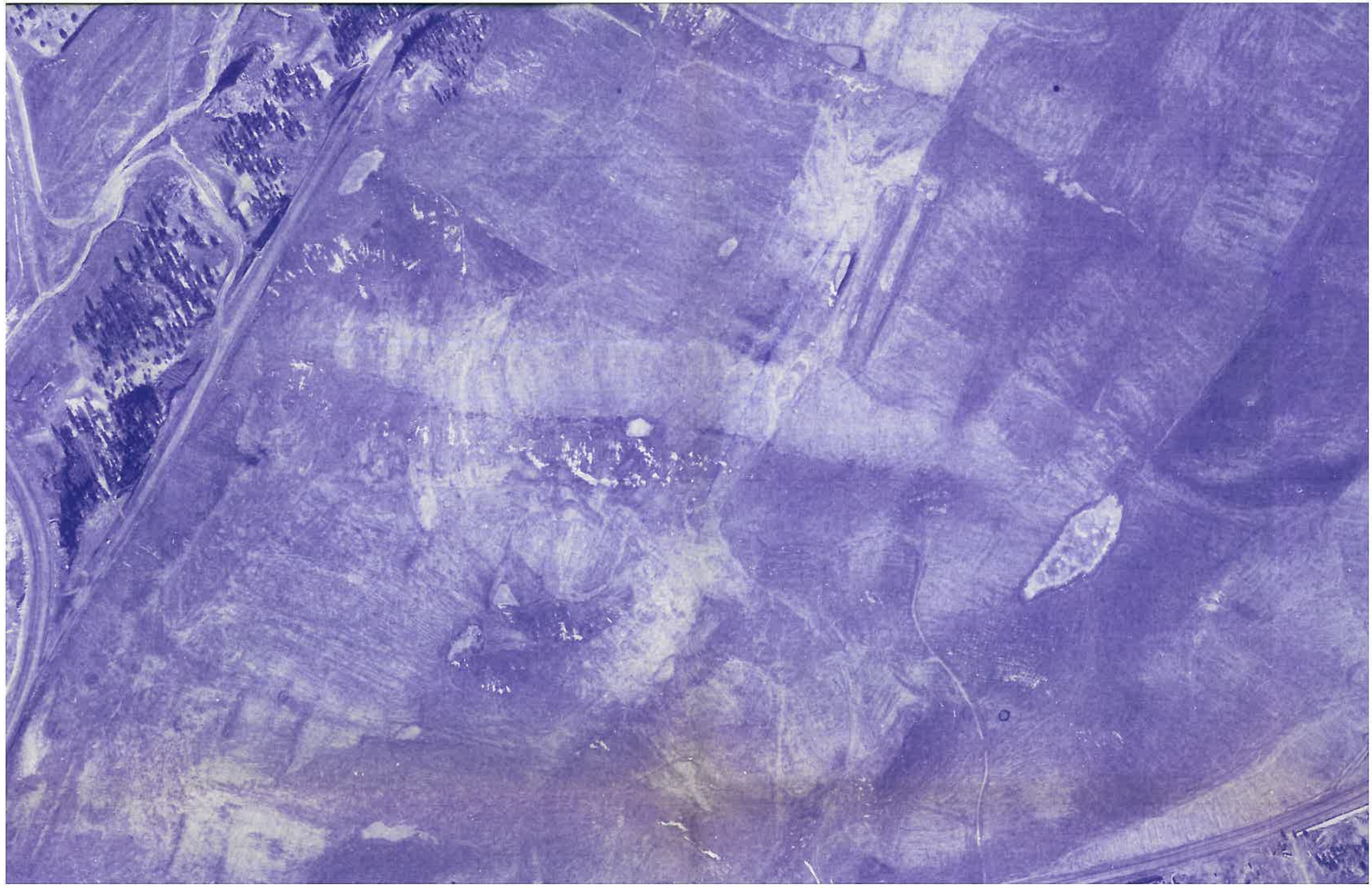
7-9D

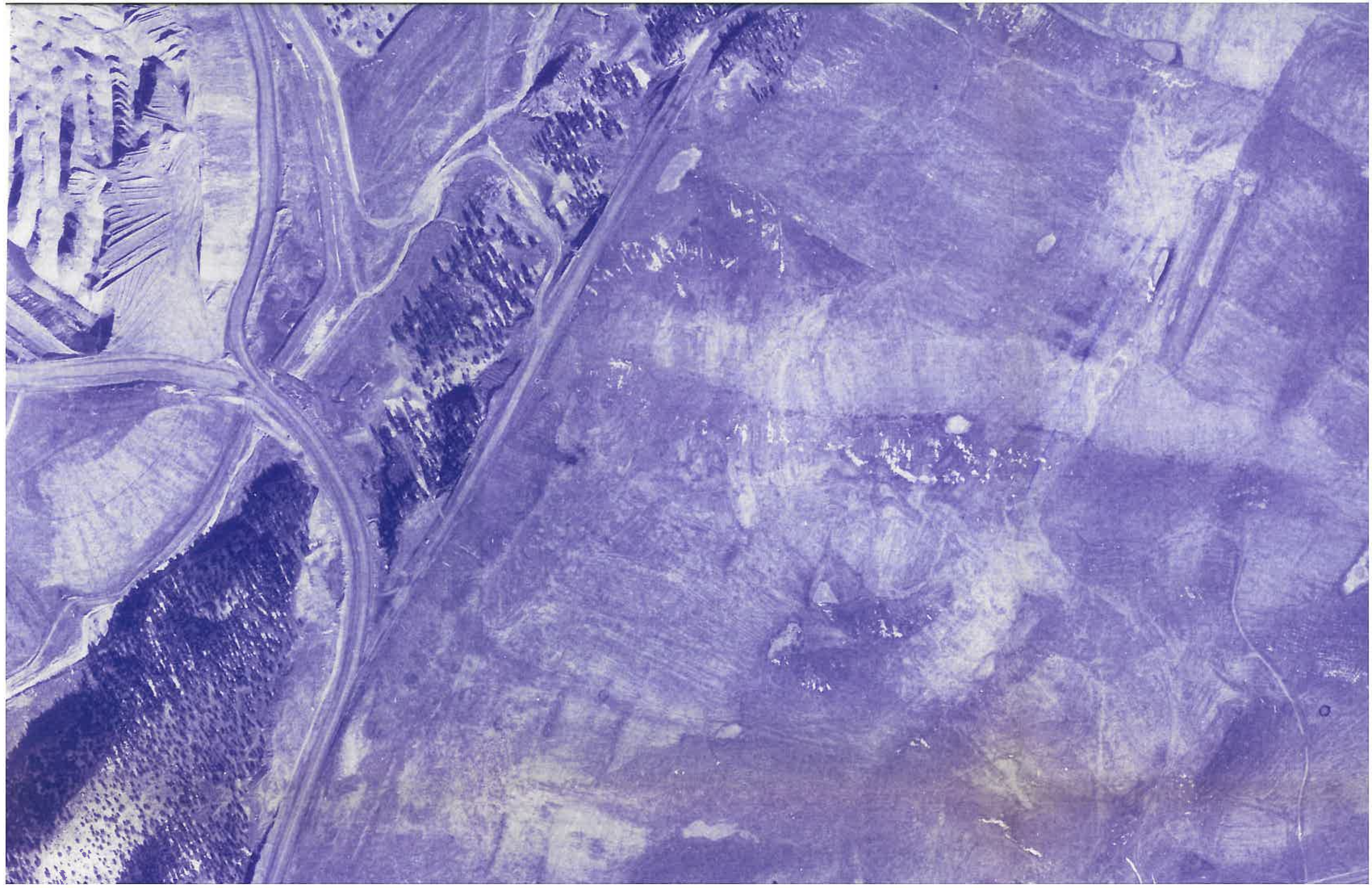
1B

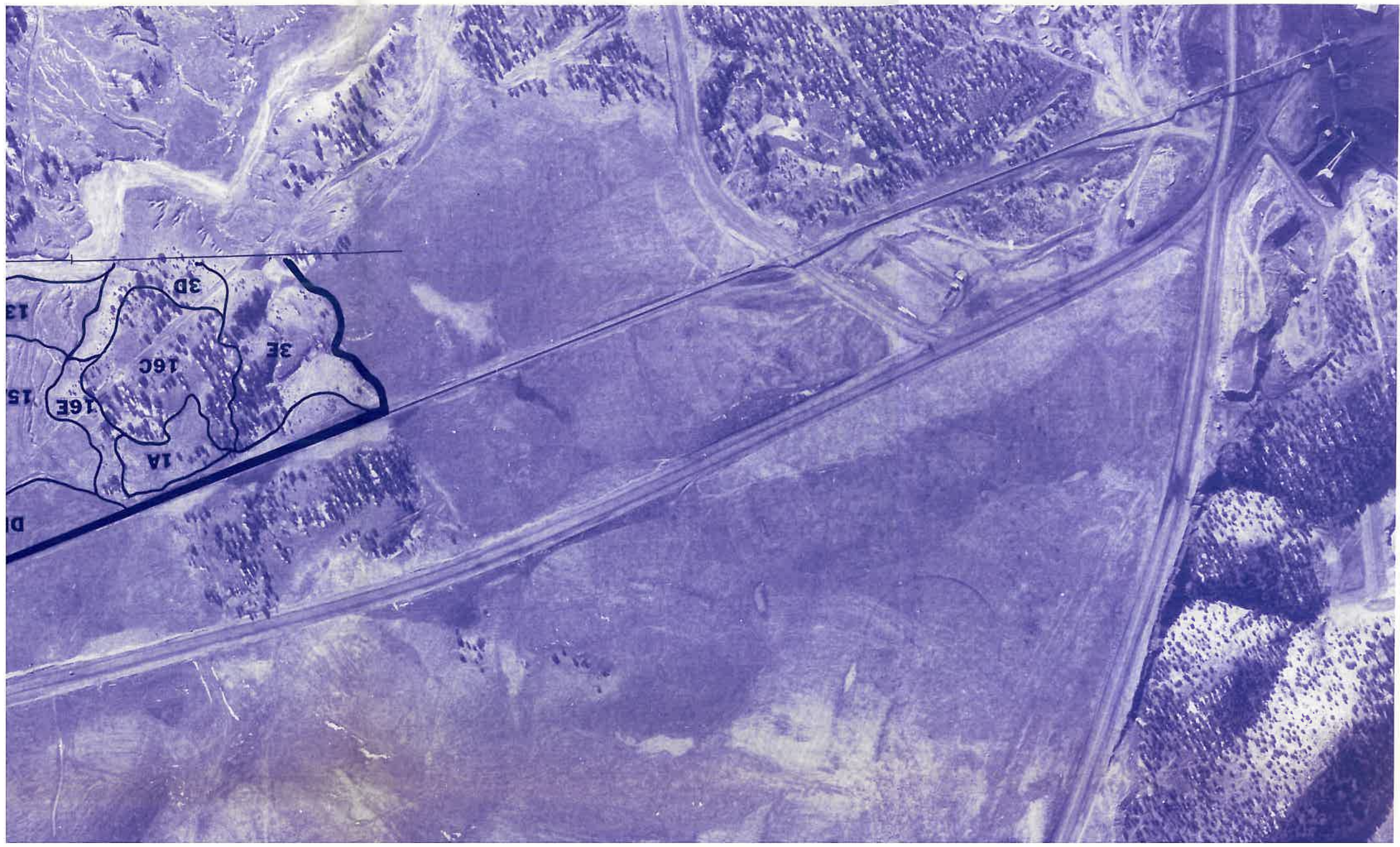
10B

3C

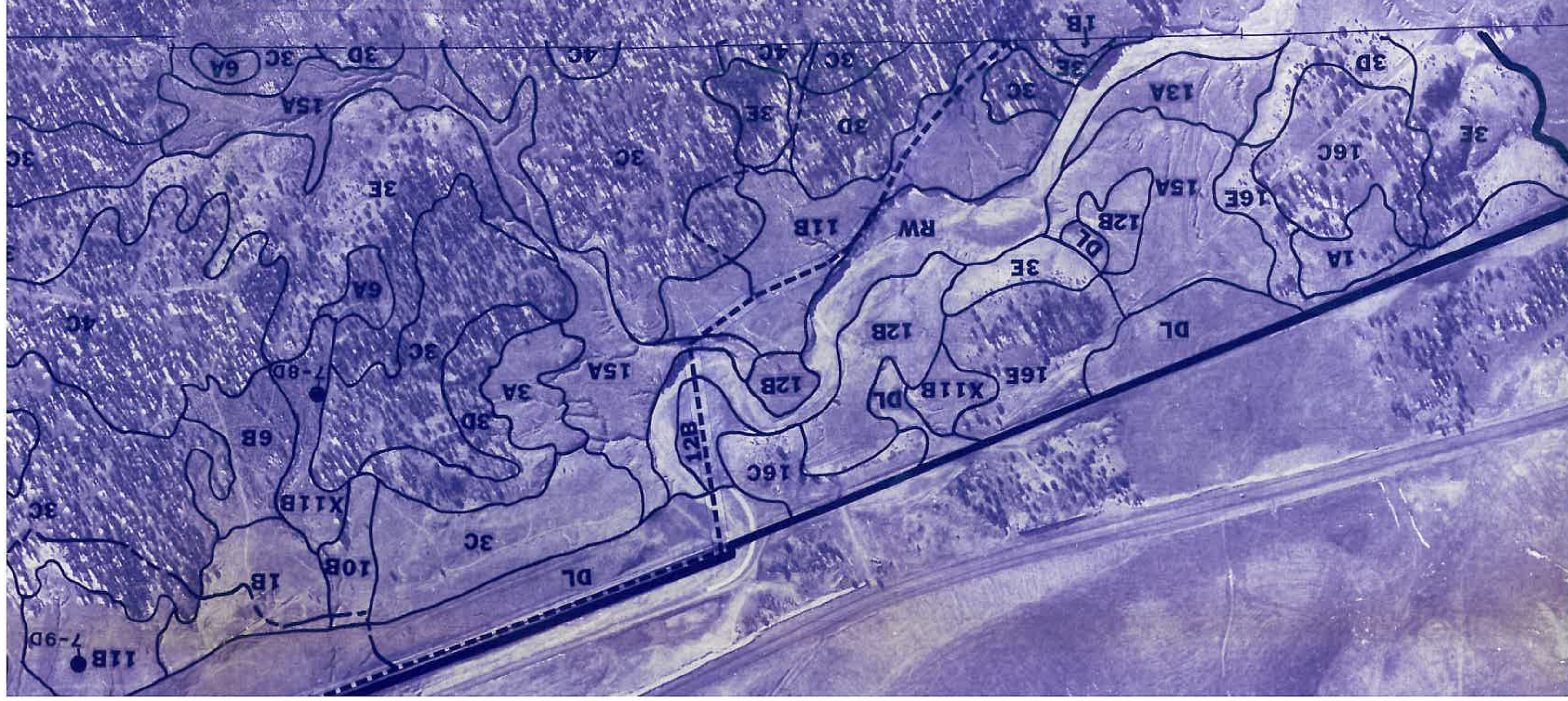
DL

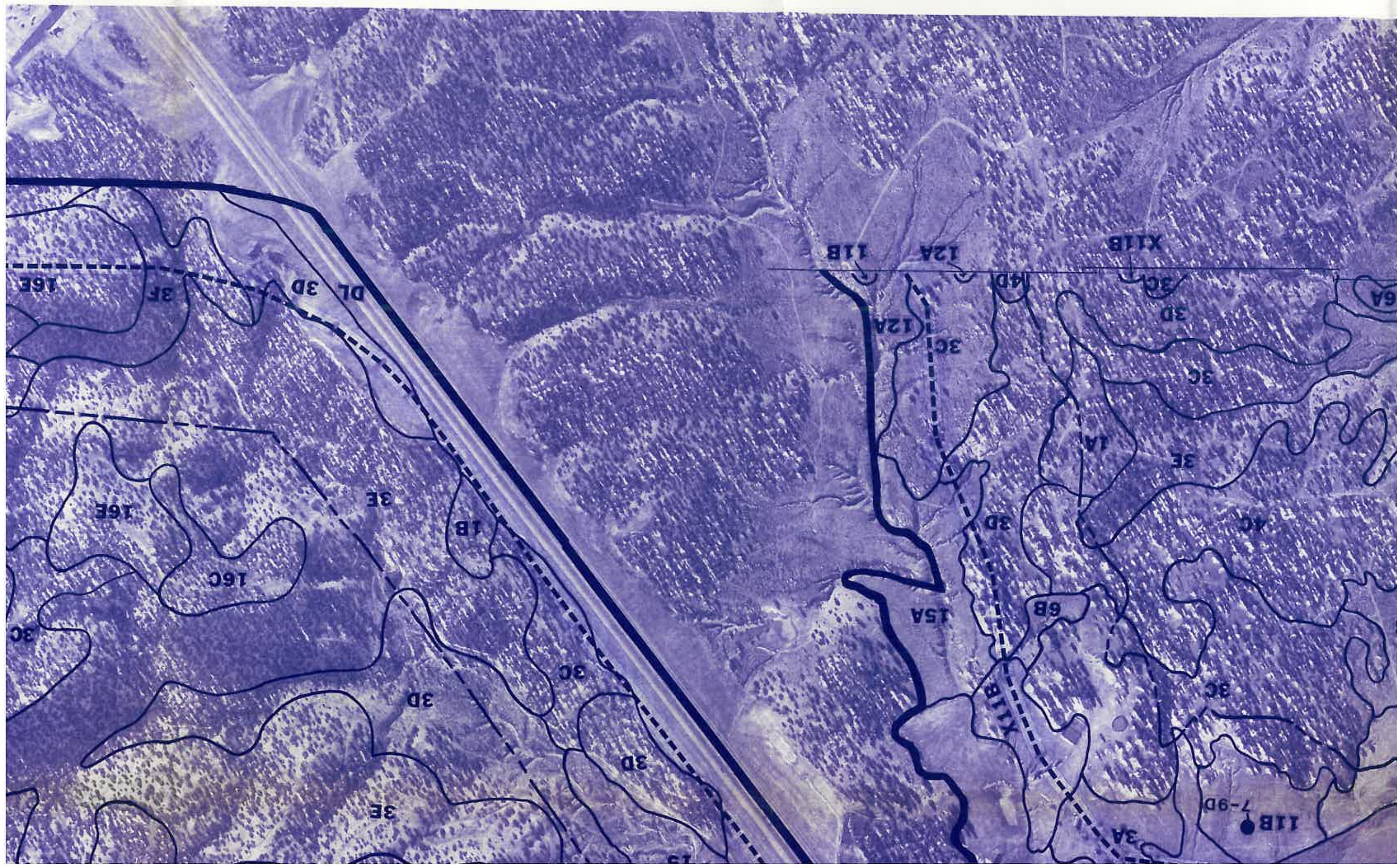




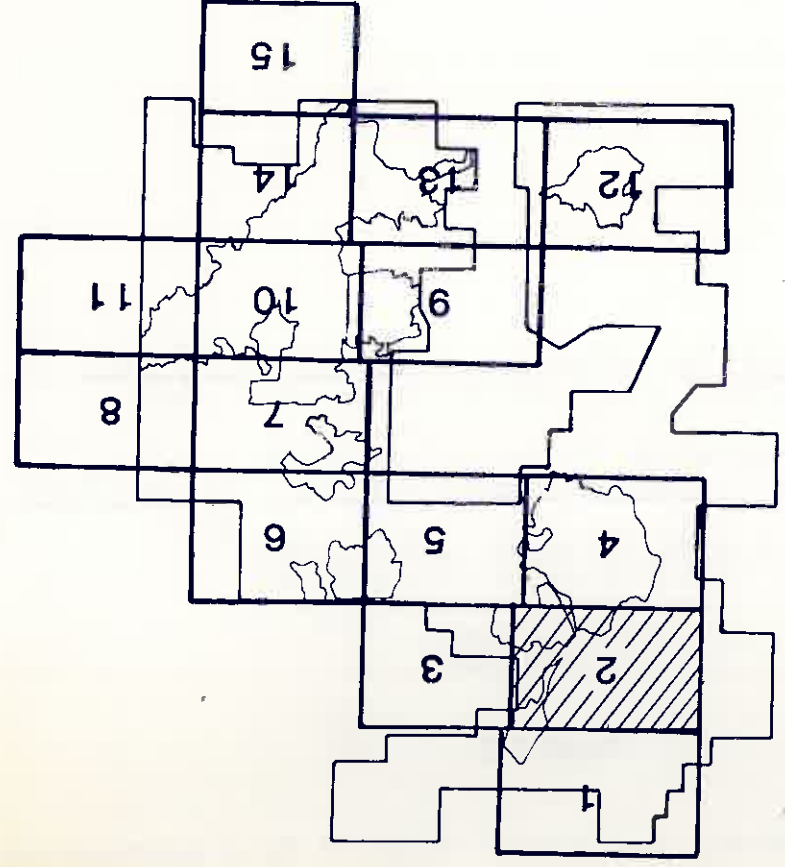


MATCH LINE (SHEET 4)





 Survey area boundary
 Crop line
 Soil sampling site
 Mapping unit delineation
 Moist/dry phase demarcation



PEABODY COAL COMPANY BLACK MESA-KAYENTA MINE P.O. BOX 625 KAYENTA, ARIZONA 86033				
ORDER 1 AND 2 SOIL SURVEY		RECEIVED BLM, PHOENIX DIST. OFF. PHOENIX, ARIZONA MAR 03 1986 AM 7:18 PM 12:13 PM 12:14 PM 12:15 PM		
SHEET No 2 of 15	DRAWN BY P J N	DATE Nov. 85	SCALE 1"=400'	C.L. N/A
REVISION DESCRIPTION		DATE	BY	DRAWN BY
Prepared by:		INTERMOUNTAIN SOIL, INC.		

