

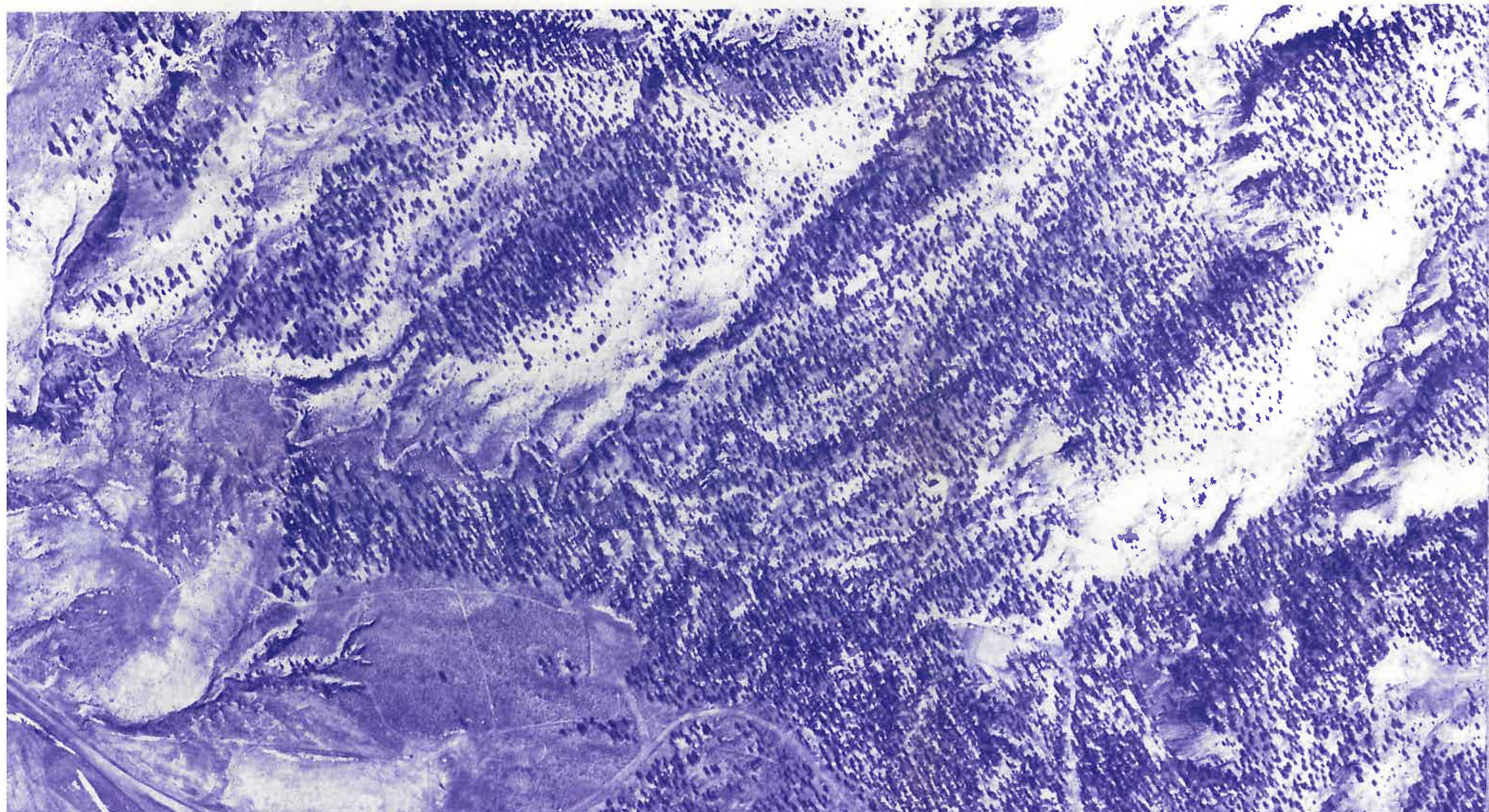
PEABODY COAL COMPANY
BLACK MESA – KAYENTA MINE
DRAWING NO. 85305A

LEGEND

Symbol

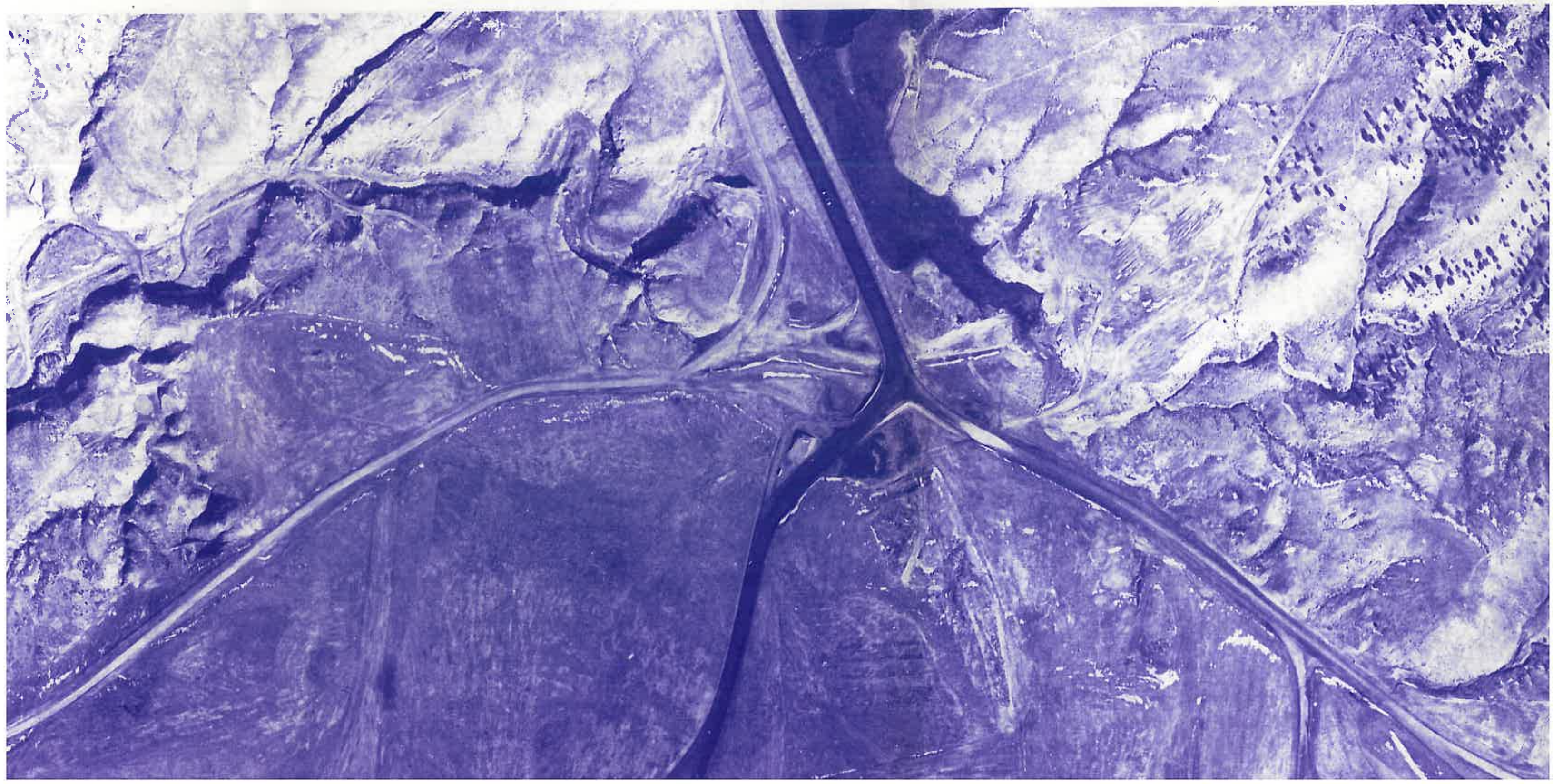
Name

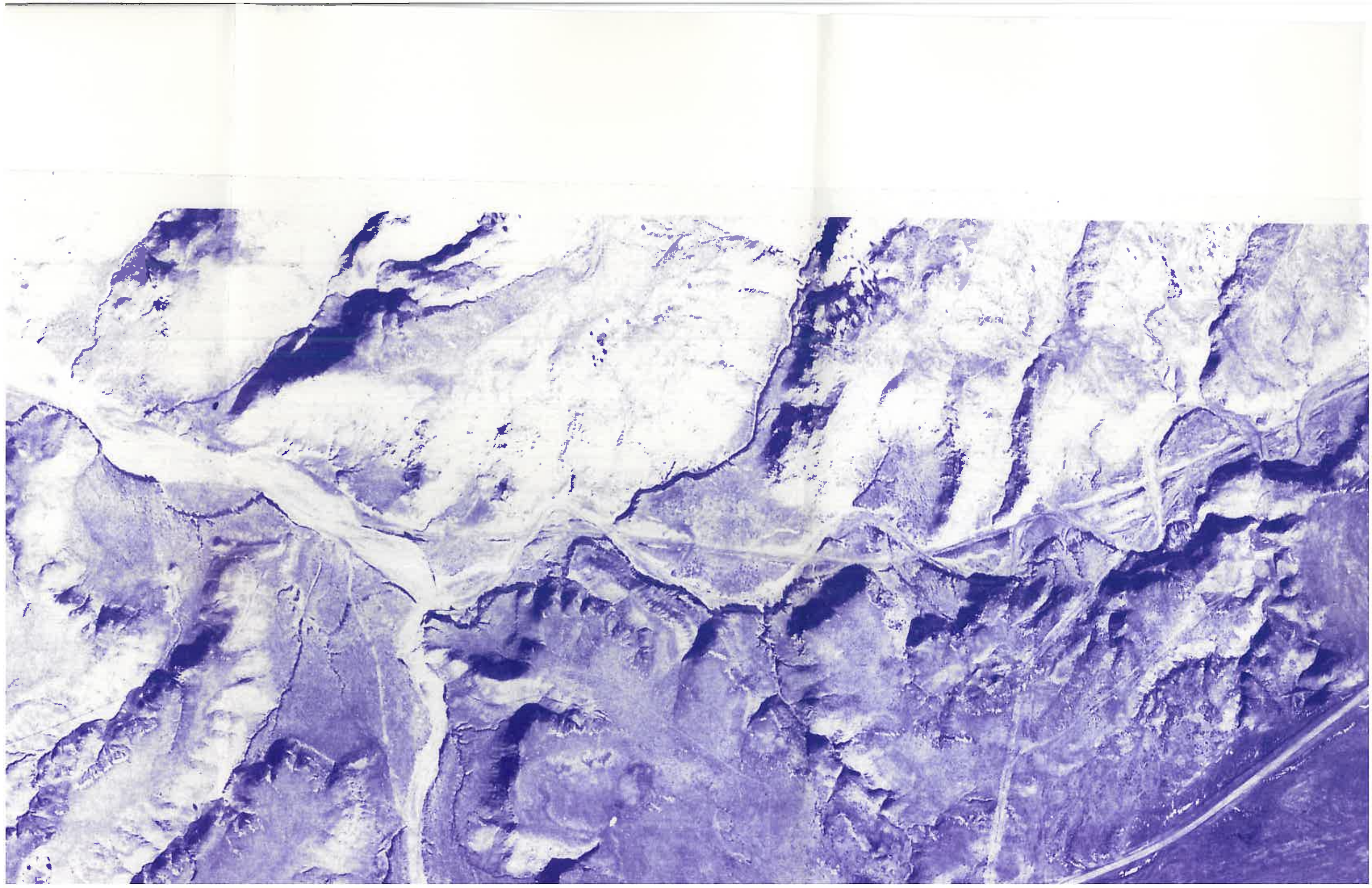
1A	Dulce very channery fine sandy loam, 1 to 4 percent slopes
1, 1B	Dulce very channery fine sandy loam, 4 to 8 percent slopes
1C	Dulce very channery fine sandy loam, 8 to 15 percent slopes
1D	Dulce very channery fine sandy loam, 15 to 30 percent slopes
2B	Bond very fine sandy loam, 1 to 8 percent slopes
3A	Zyme – Dulce complex, 2 to 8 percent slopes
3BC	Zyme – Dulce complex, 2 to 15 percent slopes
3C	Zyme – Dulce complex, 6 to 15 percent slopes
3D	Zyme – Dulce complex, 15 to 30 percent slopes
3DE	Zyme – Dulce complex, 15 to 50 percent slopes
3E	Zyme – Dulce complex, 30 to 50 percent slopes
3F	Ustic Torriorthents – Rock outcrop complex, 50 to 80 percent slopes
4A	Zyme very channery loam, 1 to 4 percent slopes
4B	Zyme very channery loam, 4 to 8 percent slopes
4C	Zyme very channery loam, 8 to 15 percent slopes

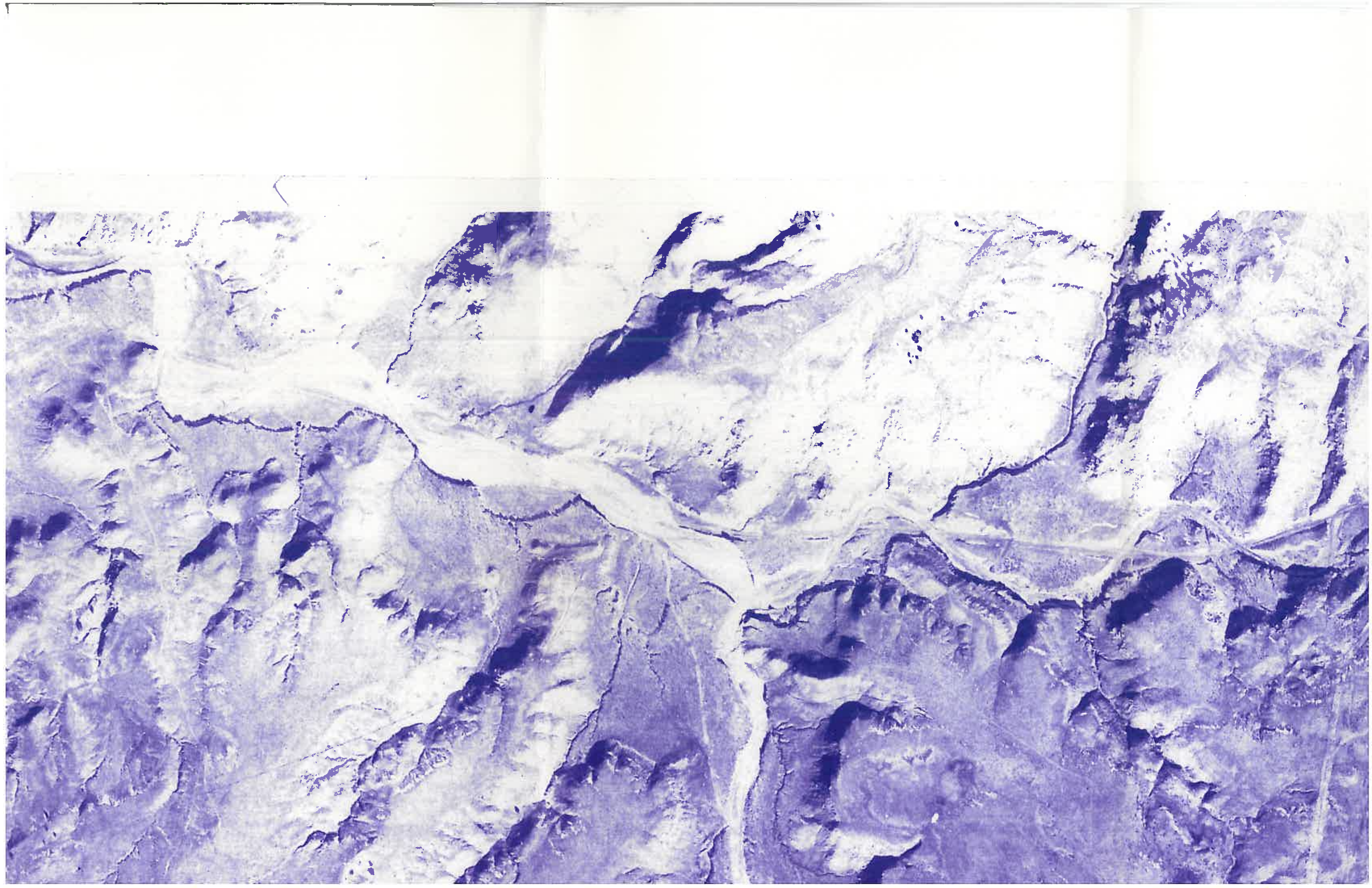


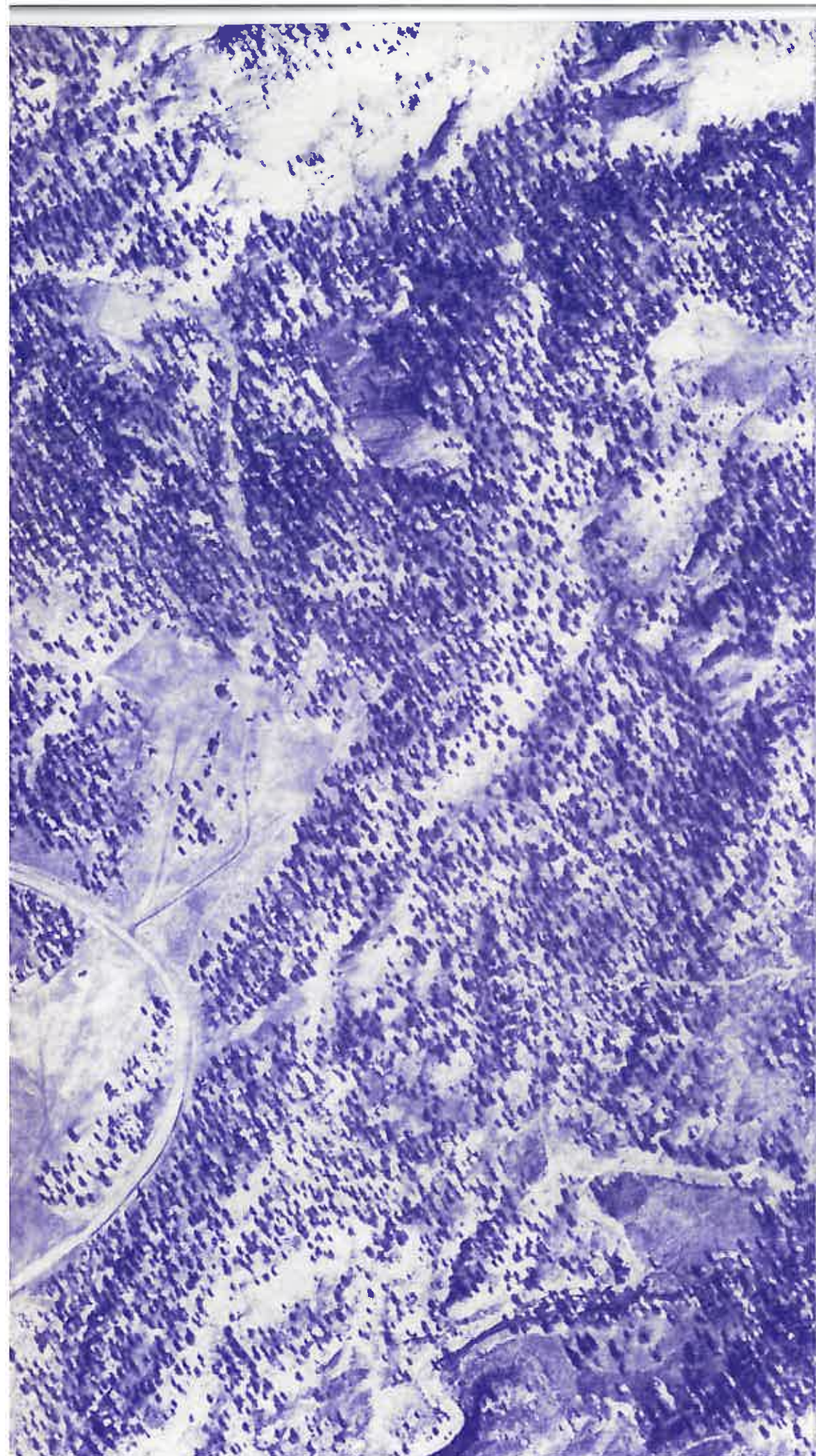
Symbol

- 1A
- 1, 1B
- 1C
- 1D
- 2B
- 3A
- 3BC
- 3C
- 3D
- 3DE
- 3E
- 3F
- 4A
- 4B
- 4C

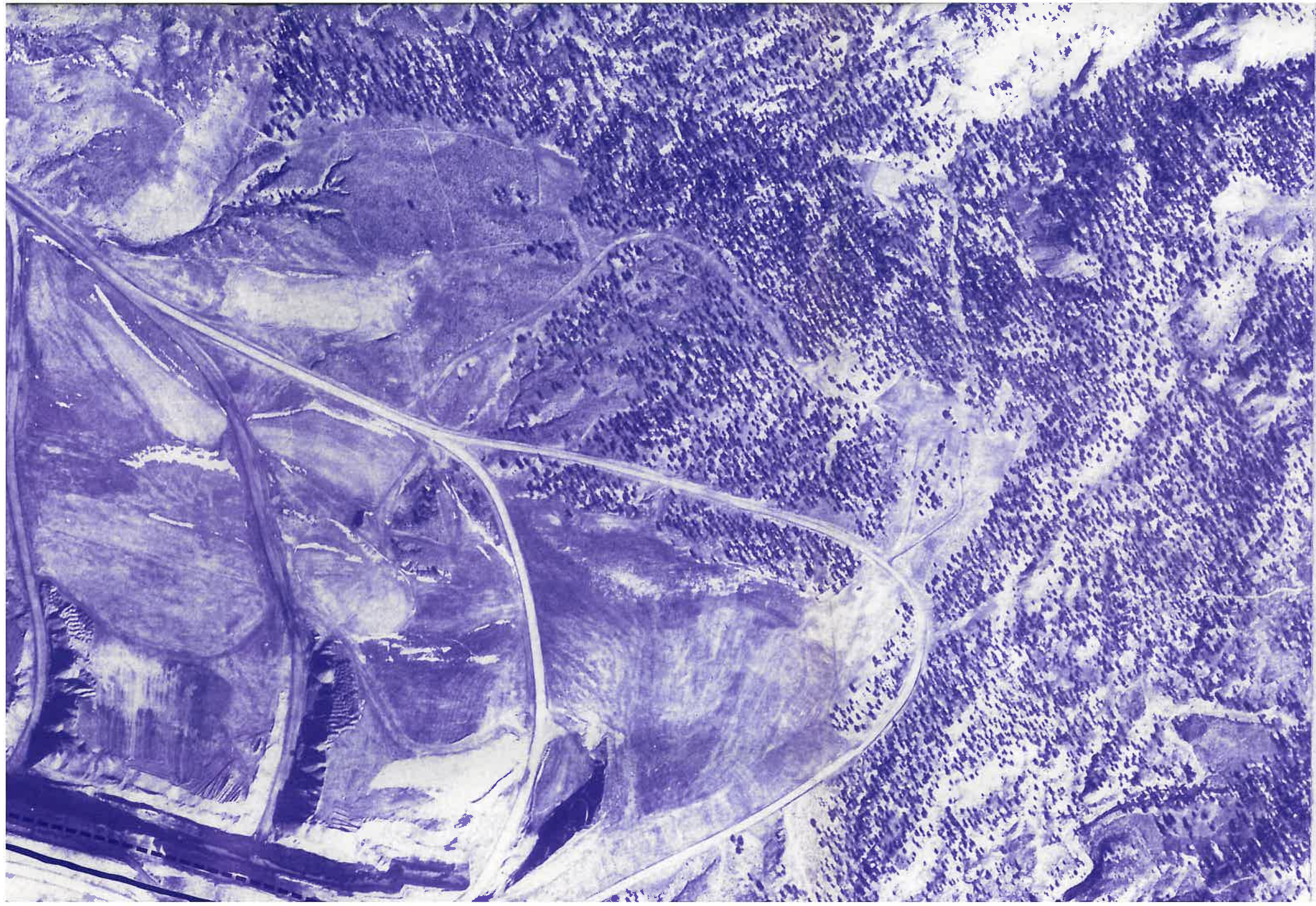




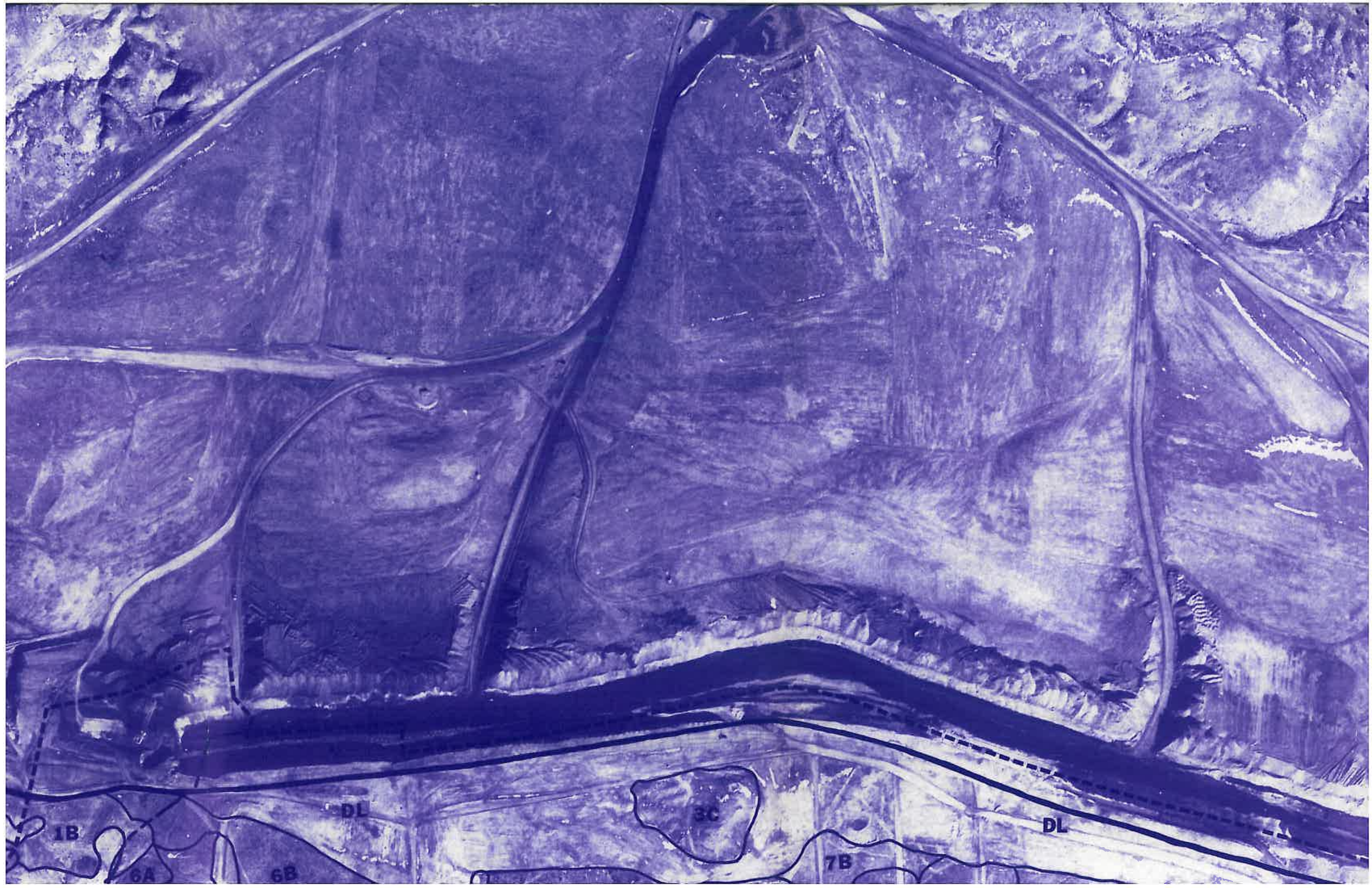


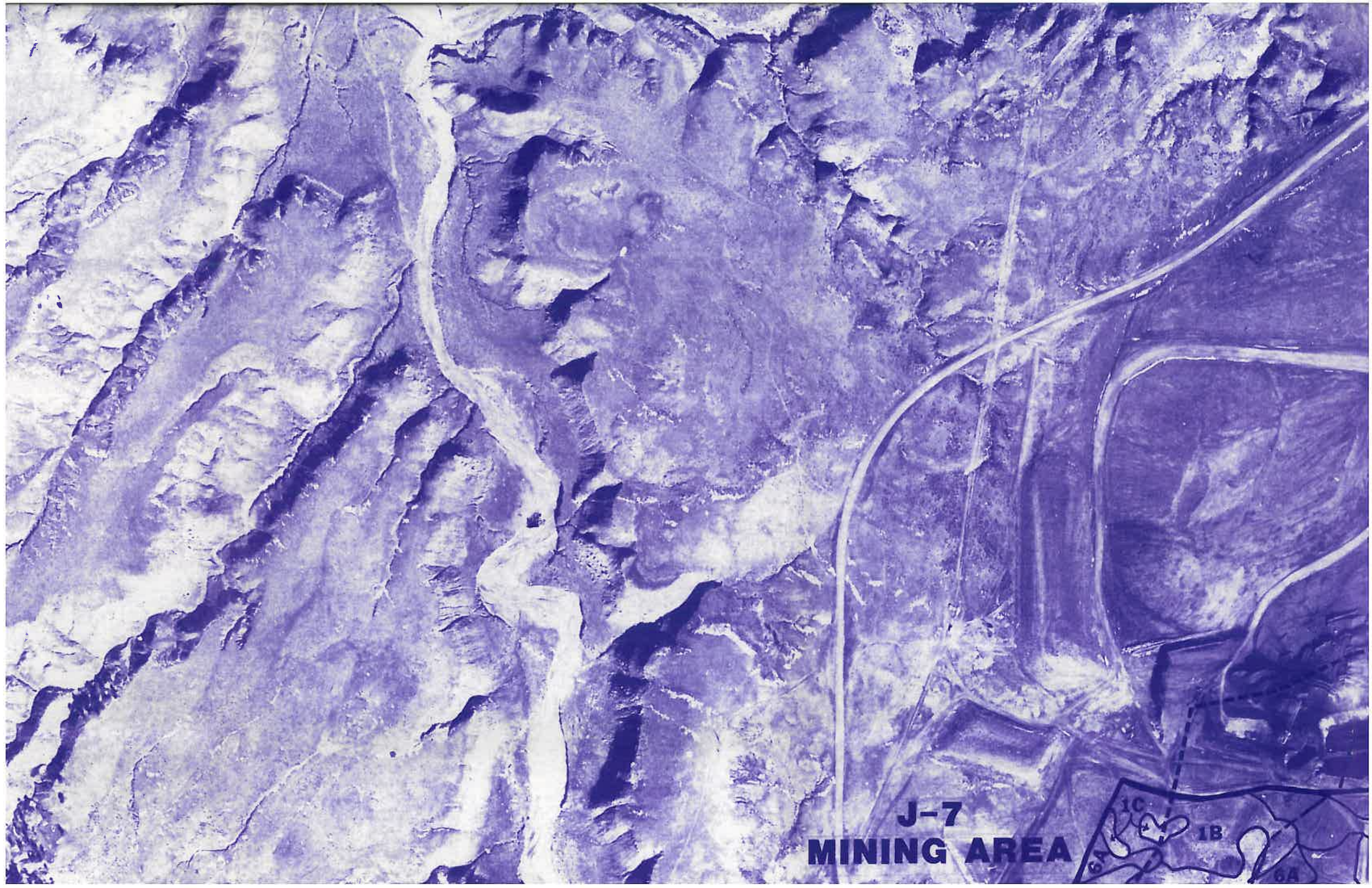


- 2B Bond very fine sandy loam, 1 to 8 percent slopes
- 3A Zyme - Dulce complex, 2 to 8 percent slopes
- 3BC Zyme - Dulce complex, 2 to 15 percent slopes
- 3C Zyme - Dulce complex, 6 to 15 percent slopes
- 3D Zyme - Dulce complex, 15 to 30 percent slopes
- 3DE Zyme - Dulce complex, 15 to 50 percent slopes
- 3E Zyme - Dulce complex, 30 to 50 percent slopes
- 3F Ustic Torriorthents - Rock outcrop complex, 50 to 80 percent slopes
- 4A Zyme very channery loam, 1 to 4 percent slopes
- 4B Zyme very channery loam, 4 to 8 percent slopes
- 4C Zyme very channery loam, 8 to 15 percent slopes
- 4D Zyme very channery loam, 15 to 30 percent slopes
- 5 Pulpit very fine sandy loam, 2 to 8 percent slopes
- 6 Sharps very fine sandy loam, 2 to 8 percent slopes
- 6A Sharps very fine sandy loam, 1 to 4 percent slopes
- 6B Sharps very fine sandy loam, 4 to 8 percent slopes
- 6C Sharps very fine sandy loam, 8 to 15 percent slopes
- 7B Travessilla - Zyme - Dulce complex, 2 to 6 percent slopes
- 7C Zyme - Travessilla - Rock outcrop complex, 6 to 15 percent slopes
- 7D Zyme - Travessilla - Rock outcrop complex, 15 to 30 percent slopes
- 7E Zyme - Travessilla - Rock outcrop complex, 30 to 50 percent slopes
- 10 Cahona very fine sandy loam, bedrock substratum, 2 to 8 percent slopes
- 10A Cahona very fine sandy loam, bedrock substratum, 1 to 4 percent slopes
- 10B Cahona very fine sandy loam, bedrock substratum, 4 to 8 percent slopes
- 10C Cahona very fine sandy loam, bedrock substratum, 8 to 15 percent slopes
- 11 Cahona very fine sandy loam, 1 to 6 percent slopes
- 11A Cahona very fine sandy loam, 1 to 4 percent slopes
- 11B Cahona very fine sandy loam, 4 to 8 percent slopes
- 11C Cahona very fine sandy loam, 8 to 15 percent slopes
- G11B Cahona very fine sandy loam, gravelly substratum, 2 to 8 percent slopes
- X11 Cahona - Cahona, bedrock substratum very fine sandy loams, 2 to 10 percent slopes

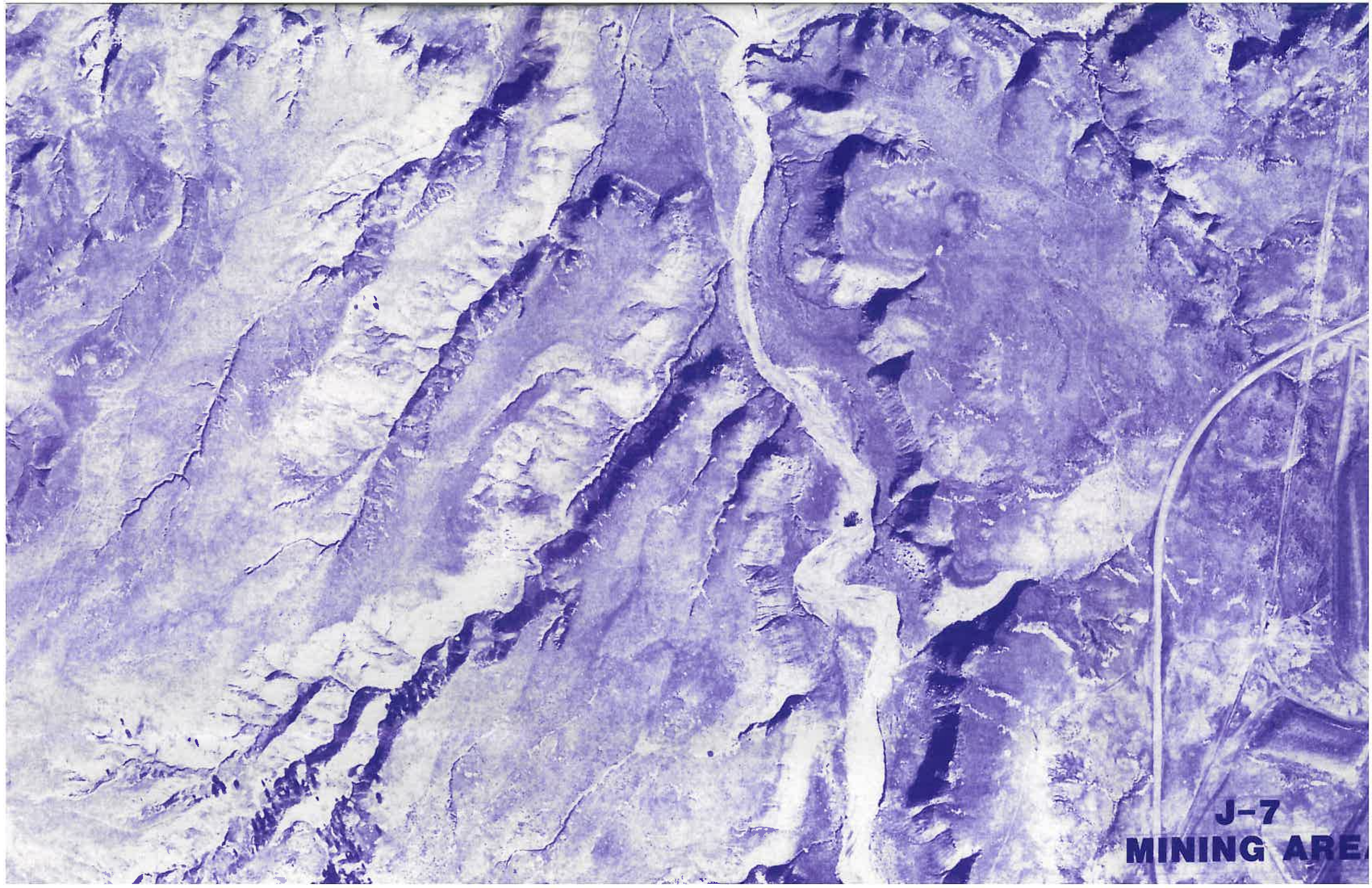


2
3
3
3
3
3
3
3
4
4
4
4
5
6
6
6
6
7
7
7
7
10
10
10
10
11
11
11
11
G
X

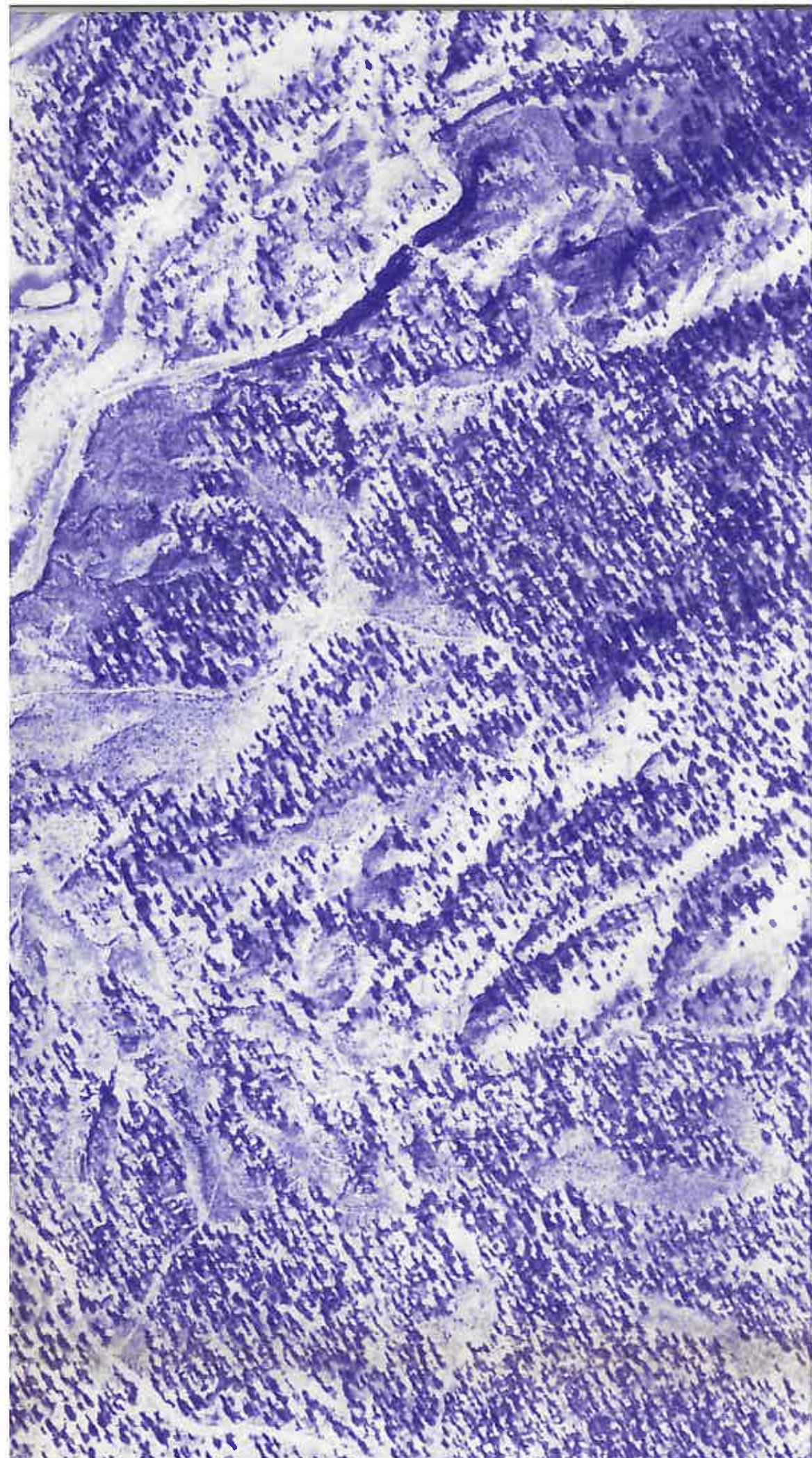







J-7
MINING AREA



**J-7
MINING AREA**





- 11A Cahona very fine sandy loam, 1 to 4 percent slopes
- 11B Cahona very fine sandy loam, 4 to 8 percent slopes
- 11C Cahona very fine sandy loam, 8 to 15 percent slopes
- G11B Cahona very fine sandy loam, gravelly substratum, 2 to 8 percent slopes
- X11 Cahona - Cahona, bedrock substratum, very fine sandy loams, 2 to 10 percent slopes
- X11A Cahona - Cahona, bedrock substratum, very fine sandy loams, 1 to 4 percent slopes
- X11B Cahona - Cahona, bedrock substratum, very fine sandy loams, 4 to 8 percent slopes
- X11C Cahona - Cahona, bedrock substratum, very fine sandy loams, 8 to 15 percent slopes
- 12 Begay loam, 2 to 10 percent slopes
- 12A Begay loam, 1 to 4 percent slopes
- 12B Begay loam, 4 to 8 percent slopes
- 12C Begay loam, 8 to 15 percent slopes
- 13, 13A San Mateo loam, 0 to 3 percent slopes
- 14A Oelop very fine sandy loam, 1 to 4 percent slopes
- 14B Oelop very fine sandy loam, 4 to 8 percent slopes
- 15, 15A Las Lucas sandy clay loam, 2 to 6 percent slopes
- 16C Soil A - Soil B extremely channery very fine sandy loams, 4 to 15 percent slopes
- 16E Soil A - Soil B extremely channery very fine sandy loams, 15 to 50 percent slopes
- 16F Soil A - Soil B extremely channery very fine sandy loams, 50 to 70 percent slopes
- 17C Chilton gravelly fine sandy loam, 6 to 15 percent slopes
- DL Disturbed land
- TS Topsoil stockpile
- RW Riverwash
- W Water



Disturbance boundary

Survey area boundary

Crop line

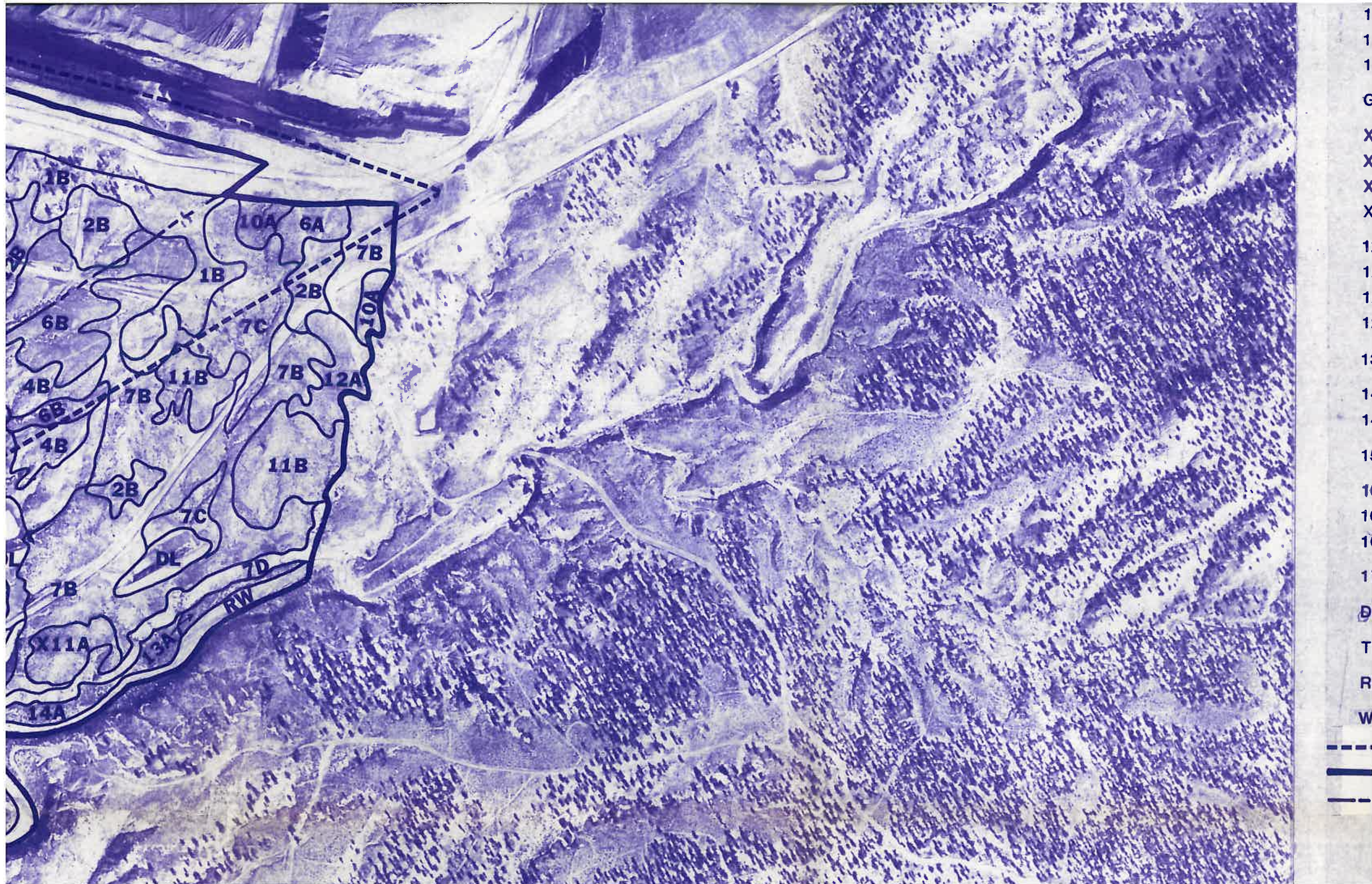


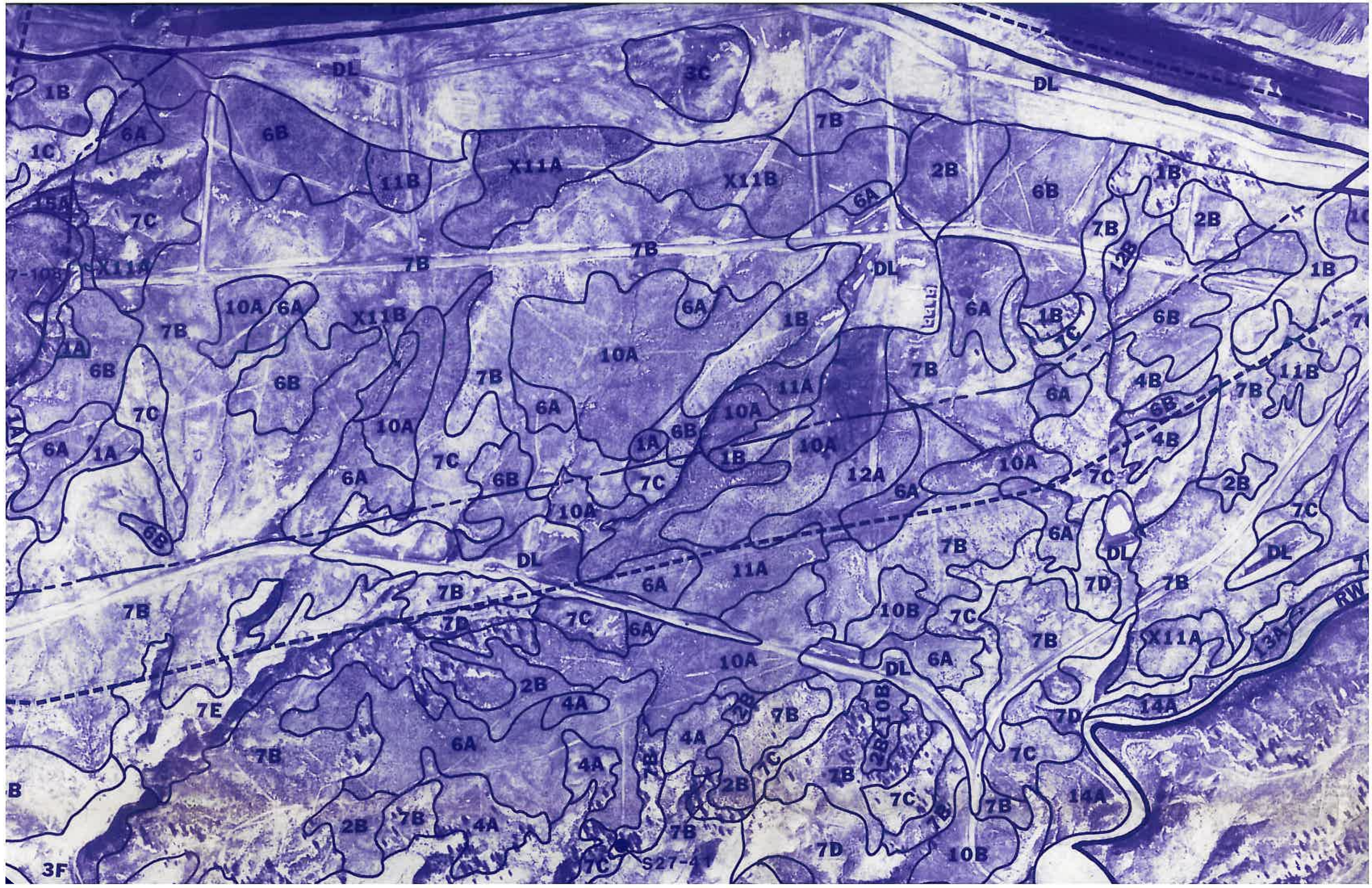
Soil sampling site

Mapping unit delineation

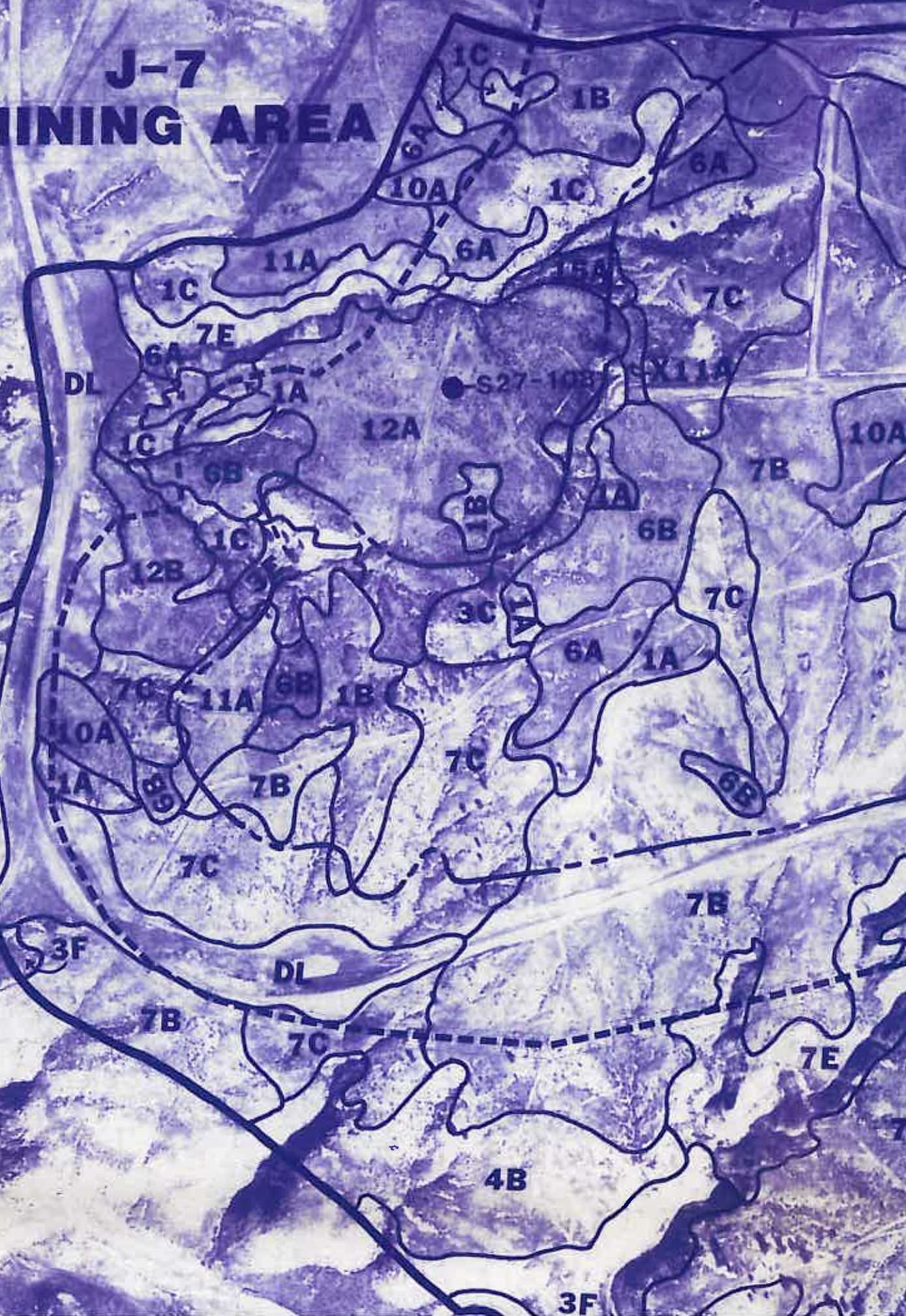
Moist/dry phase demarcation

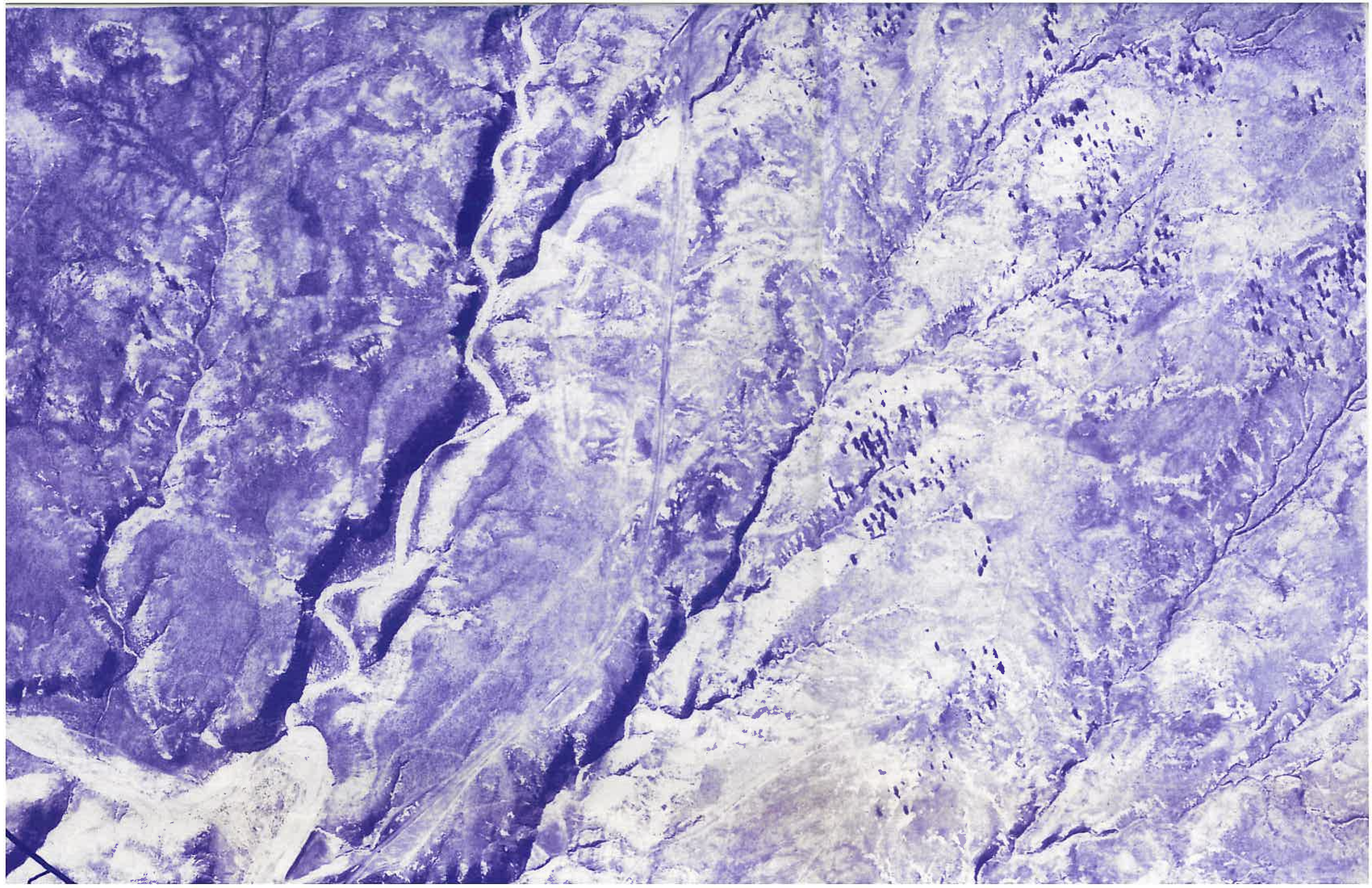


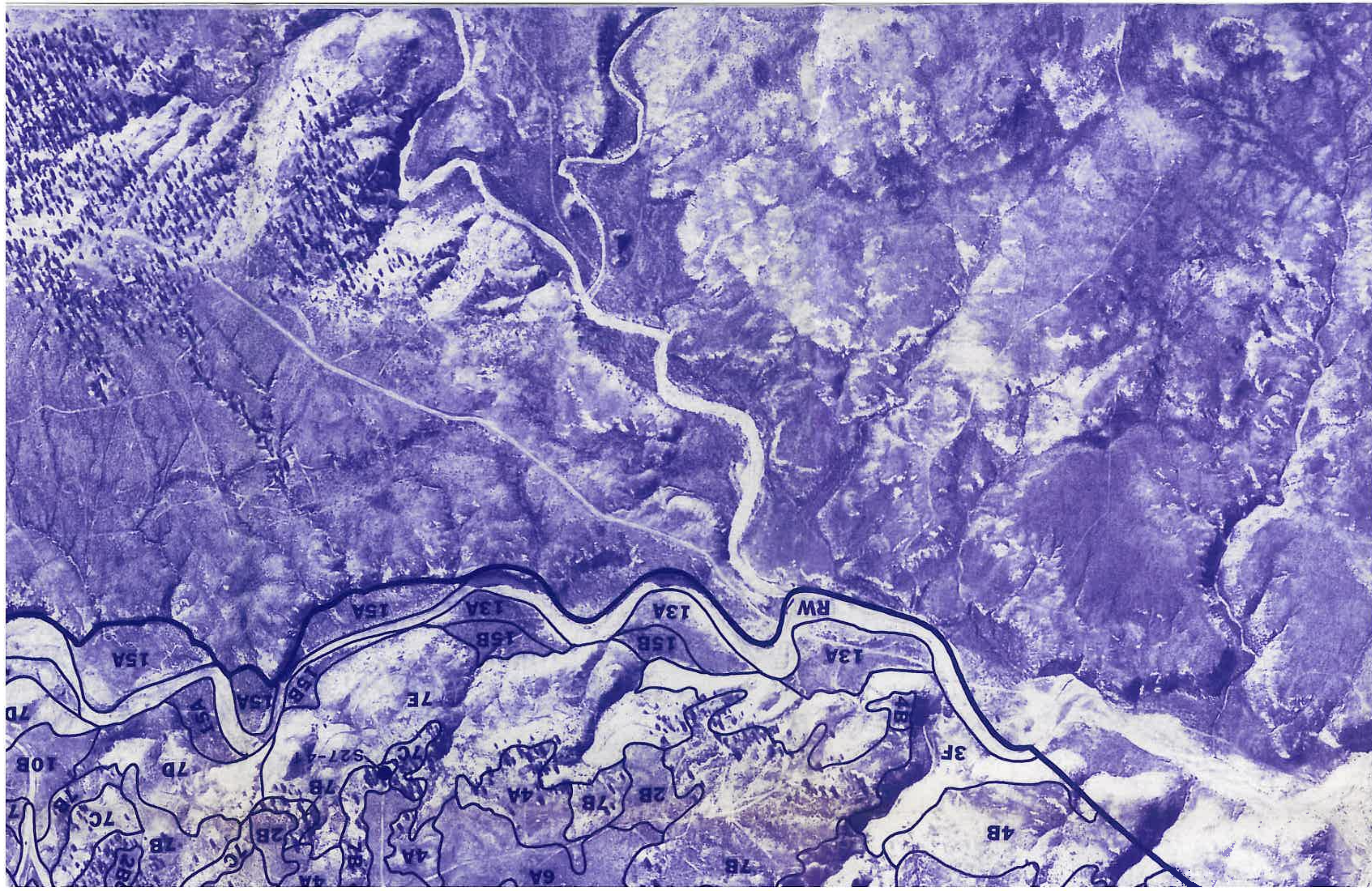




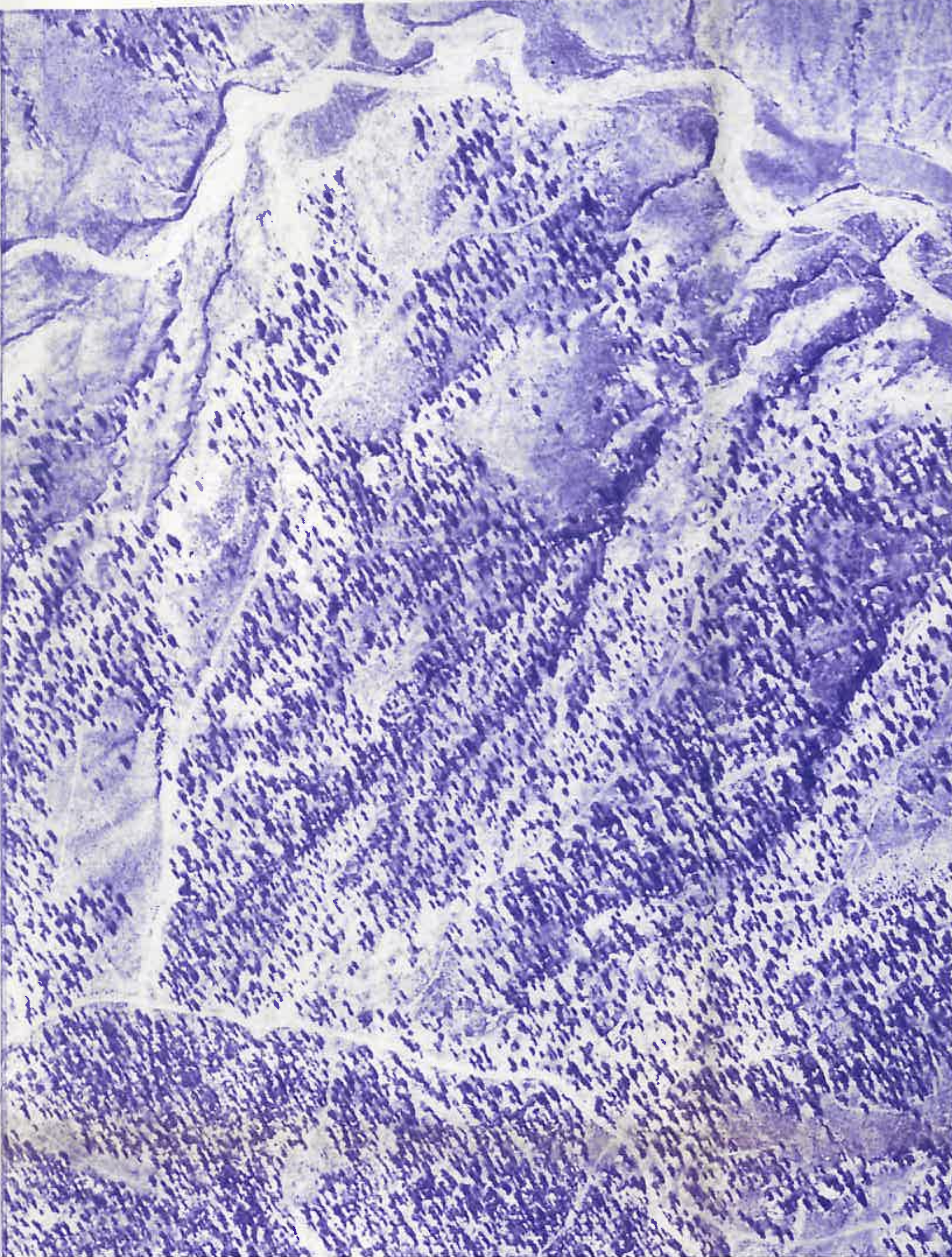
J-7 MINING AREA





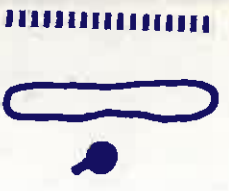




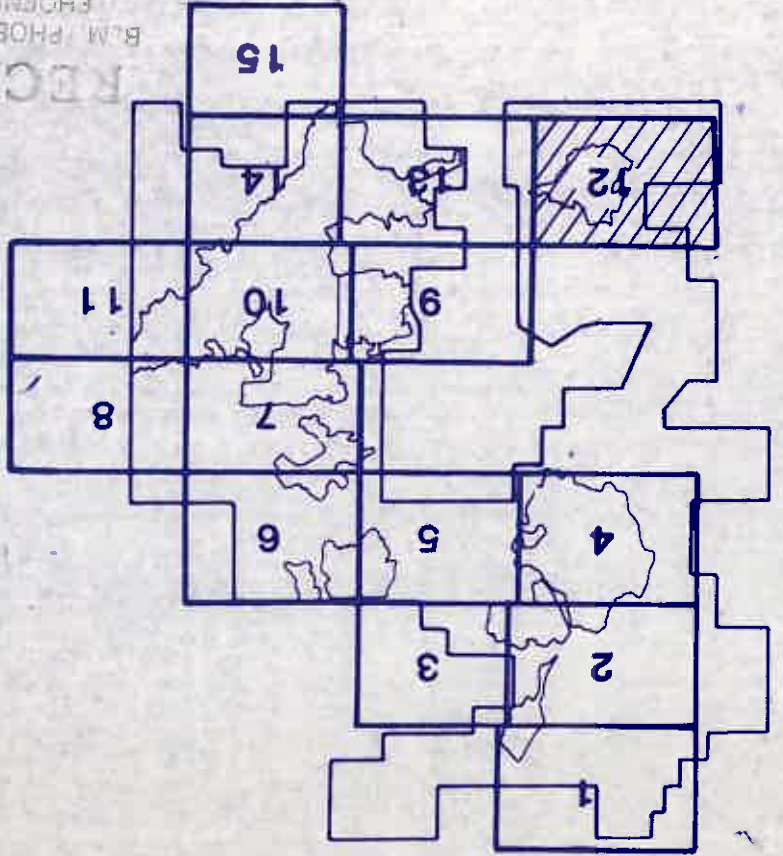


Disturbance boundary
Survey area boundary

Crop line



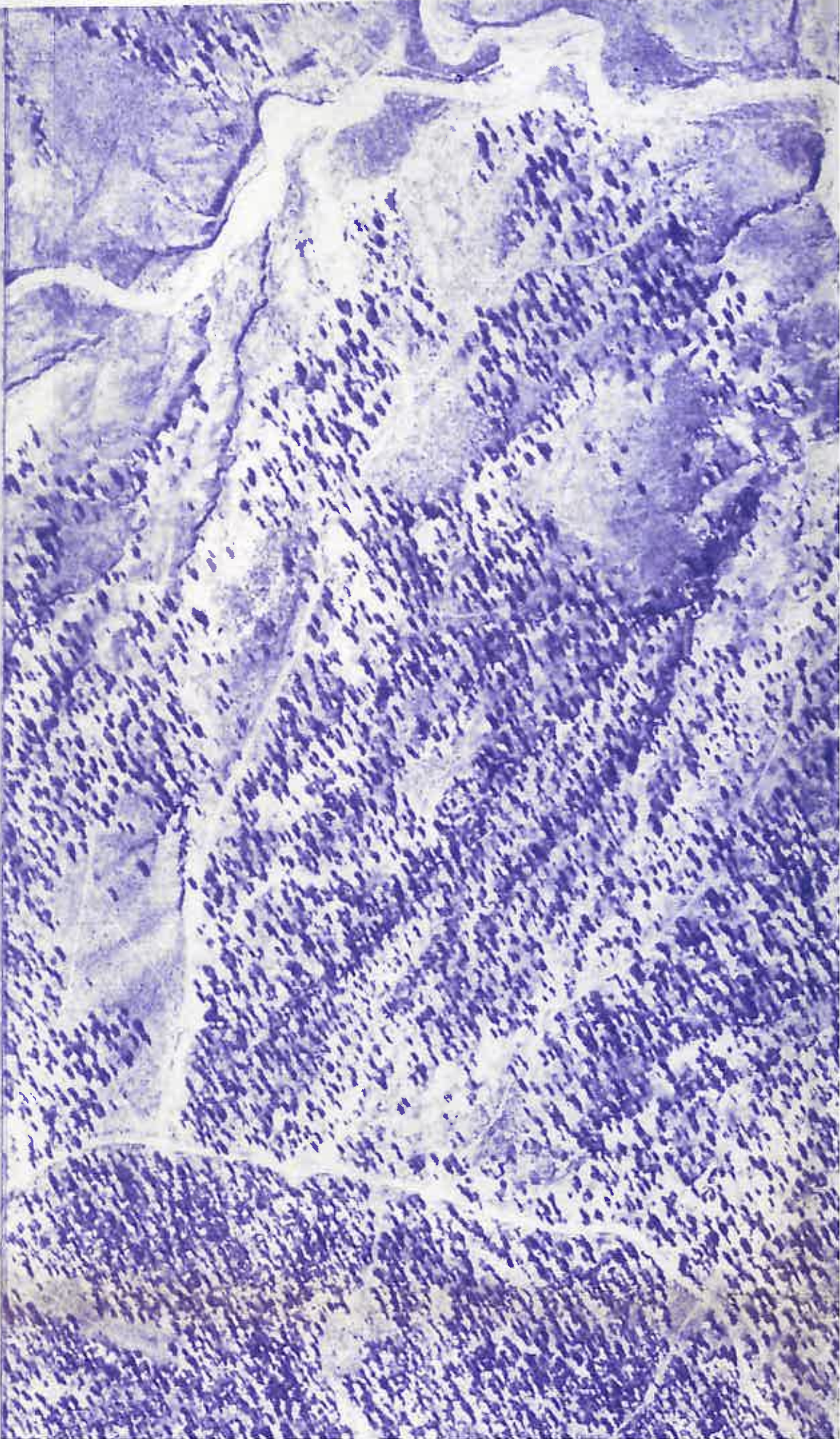
Soil sampling site
Mapping unit delineation
Moist/dry phase



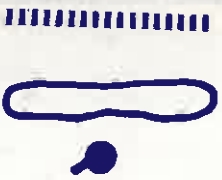
RECEIVED
B.M. PHOENIX DIST. OFF.
PHOENIX, ARIZONA
MAR 2 1986

PEABODY COAL COMPANY
BLACK MESA-KAYENTA MINE
P.O. BOX 625
KAYENTA, ARIZONA 86033

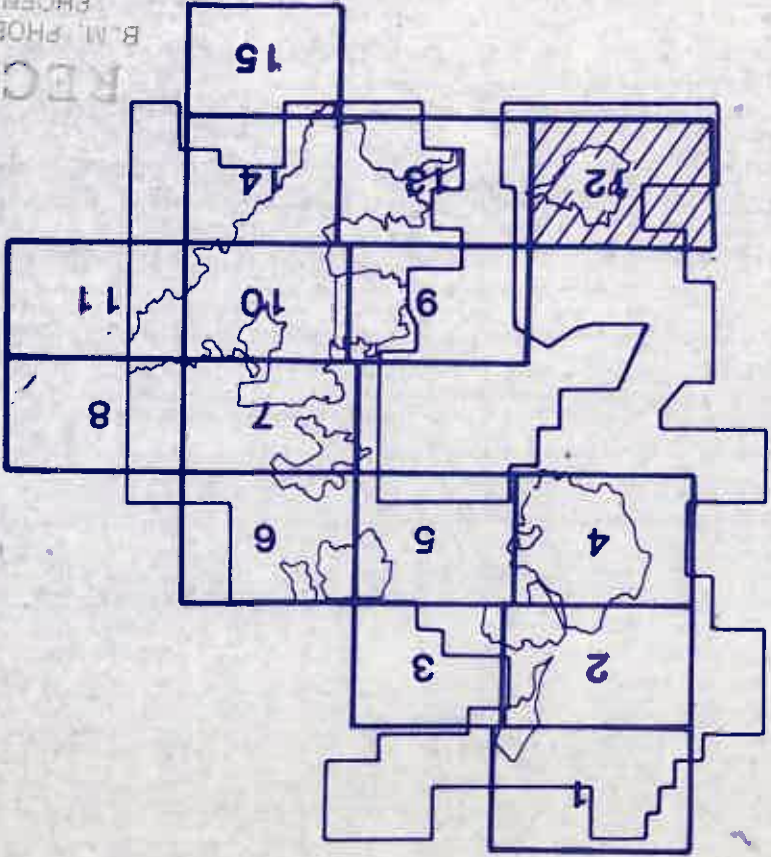
DRG No. 85305A		SHEET No. 12 of 15		DRAWN BY PJN		DATE Nov. 85		SCALE 1"=400'		C.L. N/A	
ORDER 1 AND 2		SOIL SURVEY		APPROVED BY		DATE		REVISION DESCRIPTION		Prepared by:  INTERMOUNTAIN SOILS, INC.	



Disturbance boundary
Survey area boundary
Crop line



Soil sampling site
Mapping unit delineation
Moist/dry phase demarcation



RECEIVED
B.M. PHOENIX DIST. OFF.
PHOENIX, ARIZONA
MAR 2 1986
MAR 2 1986
MI
1986/03/02 13:45:10

PEABODY COAL COMPANY BLACK MESA-KAYENTA MINE P.O. BOX 625 KAYENTA, ARIZONA 86033				
ORDER 1 AND 2 SOIL SURVEY				
DRG NO	85305A	SHEET NO	12 of 15	DRAWN BY PJN
DATE	Nov. 85	SCALE	1"=400'	C.L.
BY		APPROVED BY		DATE
REVISION DESCRIPTION				
C.L. N/A				
Prepared by: INTERMOUNTAIN SOIL, INC.				