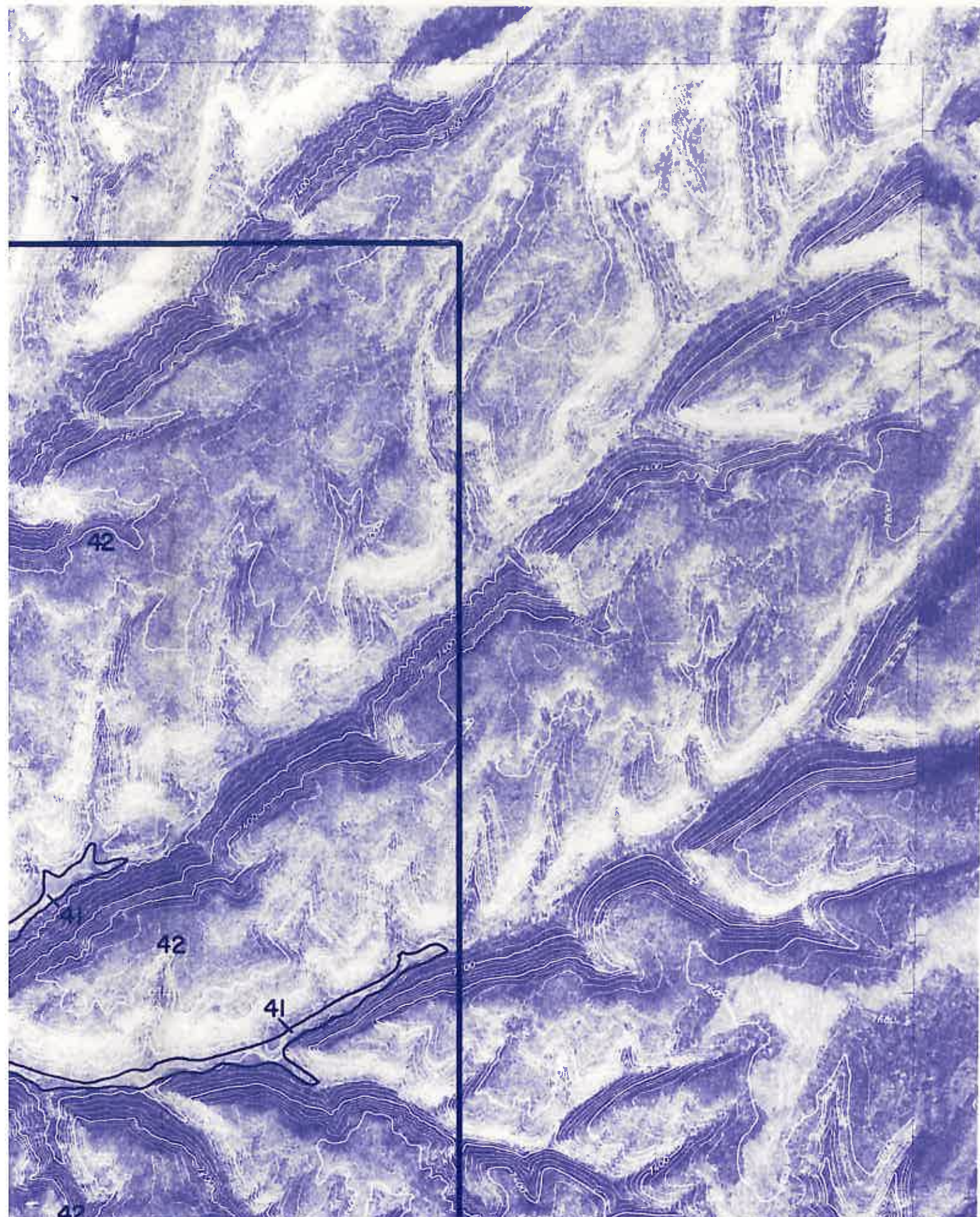
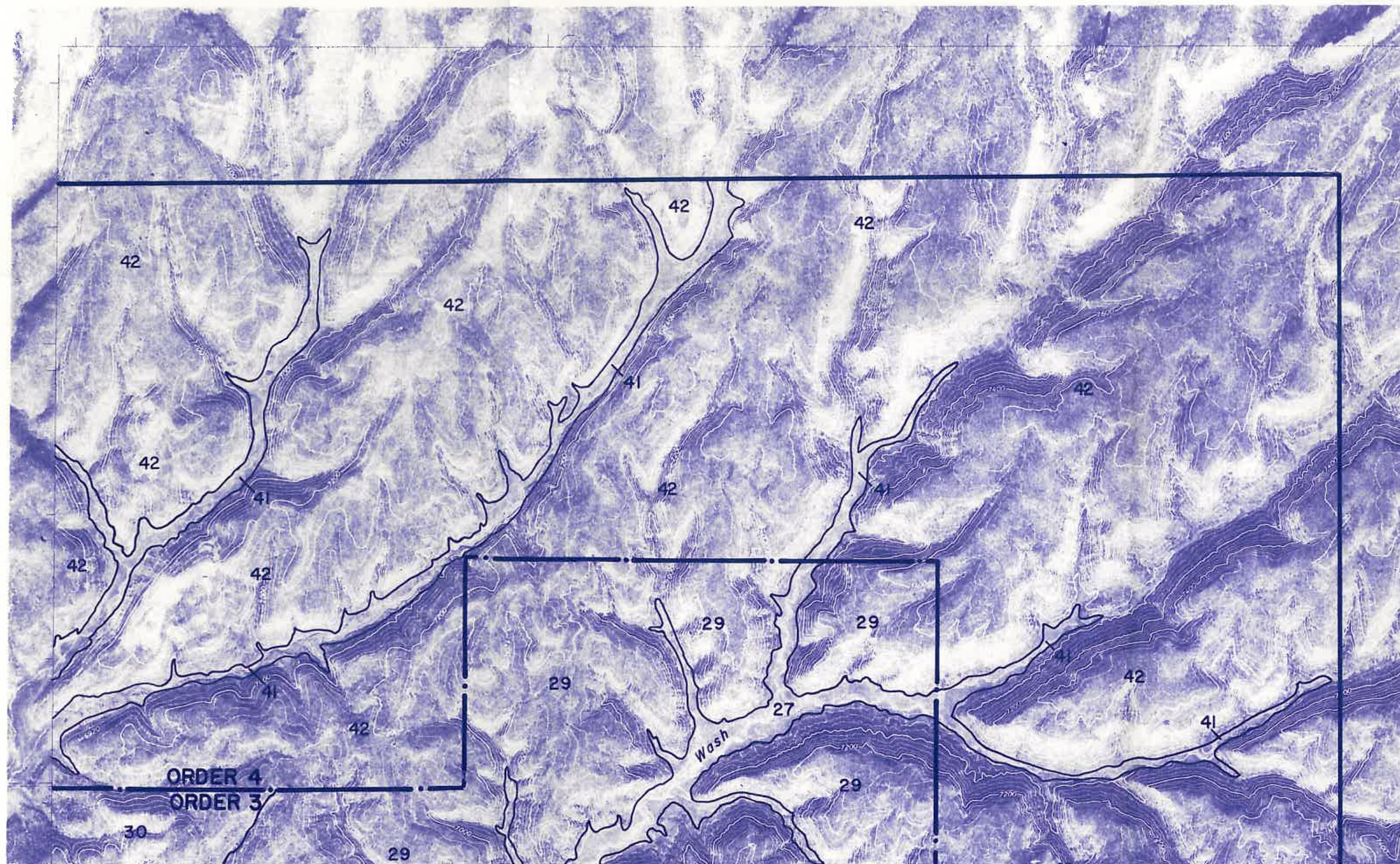


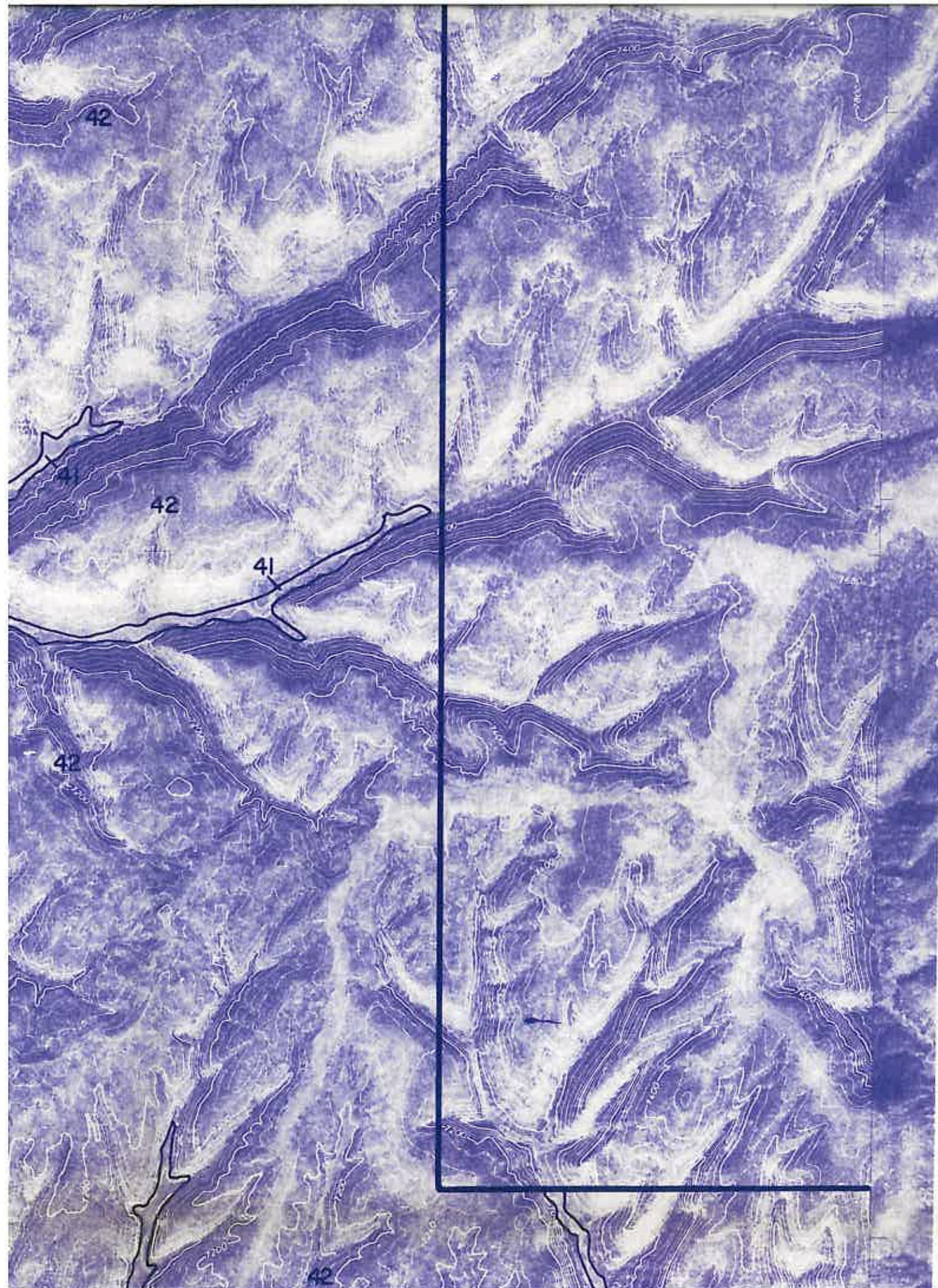
PEABODY COAL COMPANY BLACK MESA-KAYENTA MINE DRAWING NO. 85300

LEGEND

Symbol	Name
20	Zyme-Cahona-Dulce association, 0 to 30 percent slopes
21	Zyme-Las Lucas complex, 0 to 15 percent slopes
22	Zyme-Las Lucas-Dulce association, 0 to 30 percent slopes
23	Zyme-Dulce complex, severely eroded, 0 to 30 percent slopes
24	Zyme-Dulce association, 8 to 30 percent slopes
25	Zyme-Dulce-Las Lucas association, 0 to 30 percent slopes
26	Cahona-Zyme association, 0 to 30 percent slopes
27	Begay-Las Lucas association, 0 to 8 percent slopes
28	Las Lucas-Zyme-Dulce complex, 0 to 8 percent slopes
29	Dulce gravelly fine sandy loam, 0 to 30 percent slopes
30	Dulce-Zyme association, 15 to 30 percent slopes
31	Dulce-Cahona association, 0 to 30 percent slopes
32	Dulce-Las Lucas association, 0 to 15 percent slopes
33	Dulce-Las Lucas-Zyme association, 8 to 30 percent slopes
34	Pits and dumps
35	Torriorthents, reclaimed
36	San Mateo silt loam, 0 to 8 percent slopes
40	Haplargids-Torriorthents association, undulating to hilly
41	Torrifluvents, nearly level
42	Torriorthents, undulating to hilly
43	Torriorthents, sloping to very steep





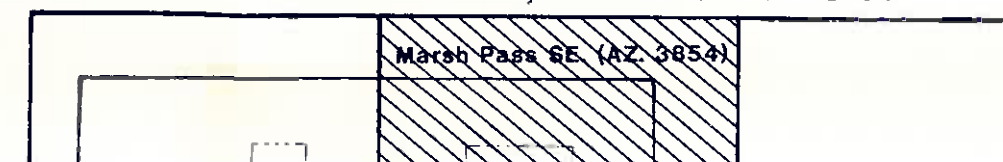


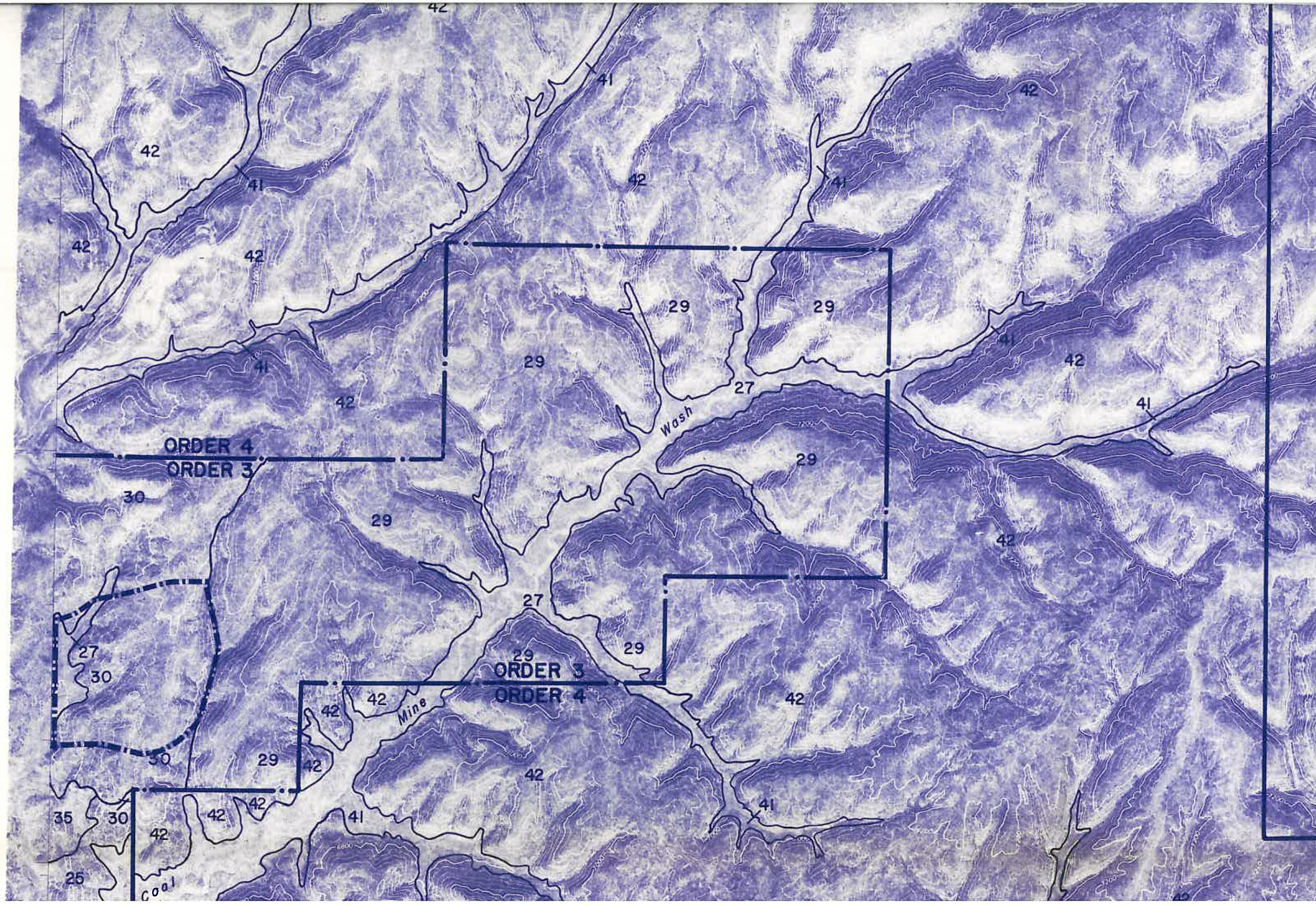
- 23 Zyme-Dulce complex, severely eroded, 0 to 30 percent slopes
- 24 Zyme-Dulce association, 8 to 30 percent slopes
- 25 Zyme-Dulce-Las Lucas association, 0 to 30 percent slopes
- 26 Cahona-Zyme association, 0 to 30 percent slopes
- 27 Begay-Las Lucas association, 0 to 8 percent slopes
- 28 Las Lucas-Zyme-Dulce complex, 0 to 8 percent slopes
- 29 Dulce gravelly fine sandy loam, 0 to 30 percent slopes
- 30 Dulce-Zyme association, 15 to 30 percent slopes
- 31 Dulce-Cahona association, 0 to 30 percent slopes
- 32 Dulce-Las Lucas association, 0 to 15 percent slopes
- 33 Dulce-Las Lucas-Zyme association, 8 to 30 percent slopes
- 34 Pits and dumps
- 35 Torriorthents, reclaimed
- 36 San Mateo silt loam, 0 to 8 percent slopes
- 40 Haplargids-Torriorthents association, undulating to hilly
- 41 Torrifluvents, nearly level
- 42 Torriorthents, undulating to hilly
- 43 Torriorthents, sloping to very steep

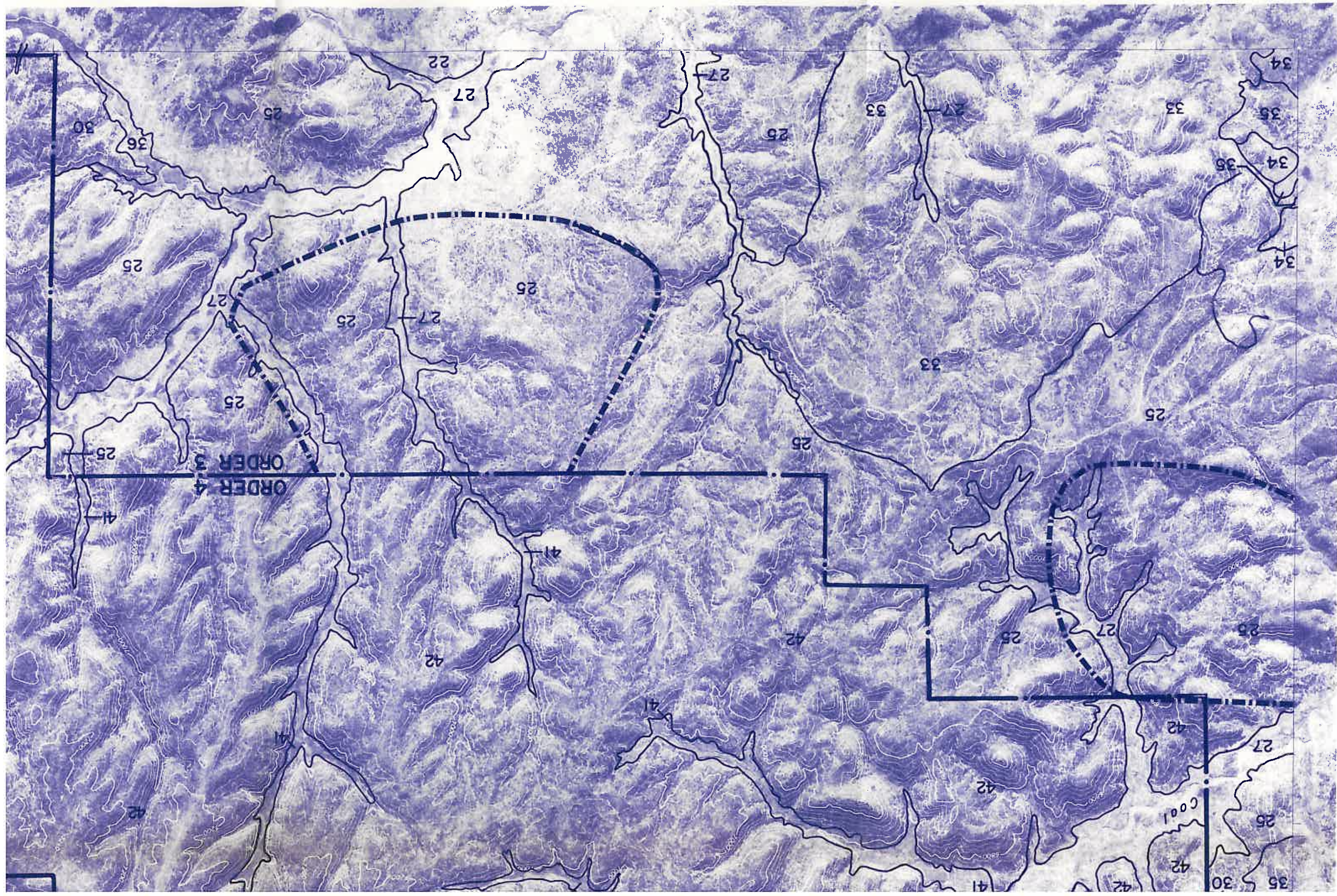
- Order 1 and 2 survey boundary
- .-.- Order 3 and 4 survey boundary
- Project area boundary
- Mapping unit delineation

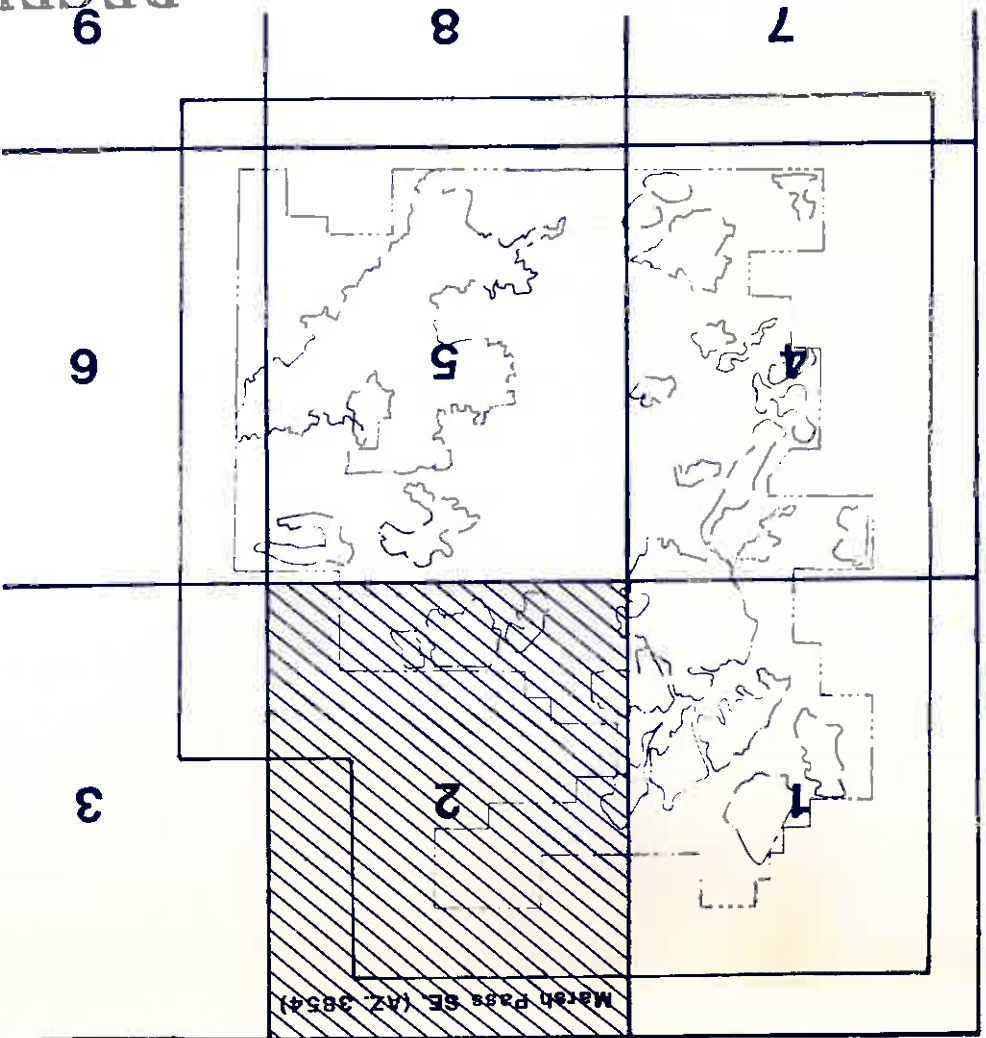
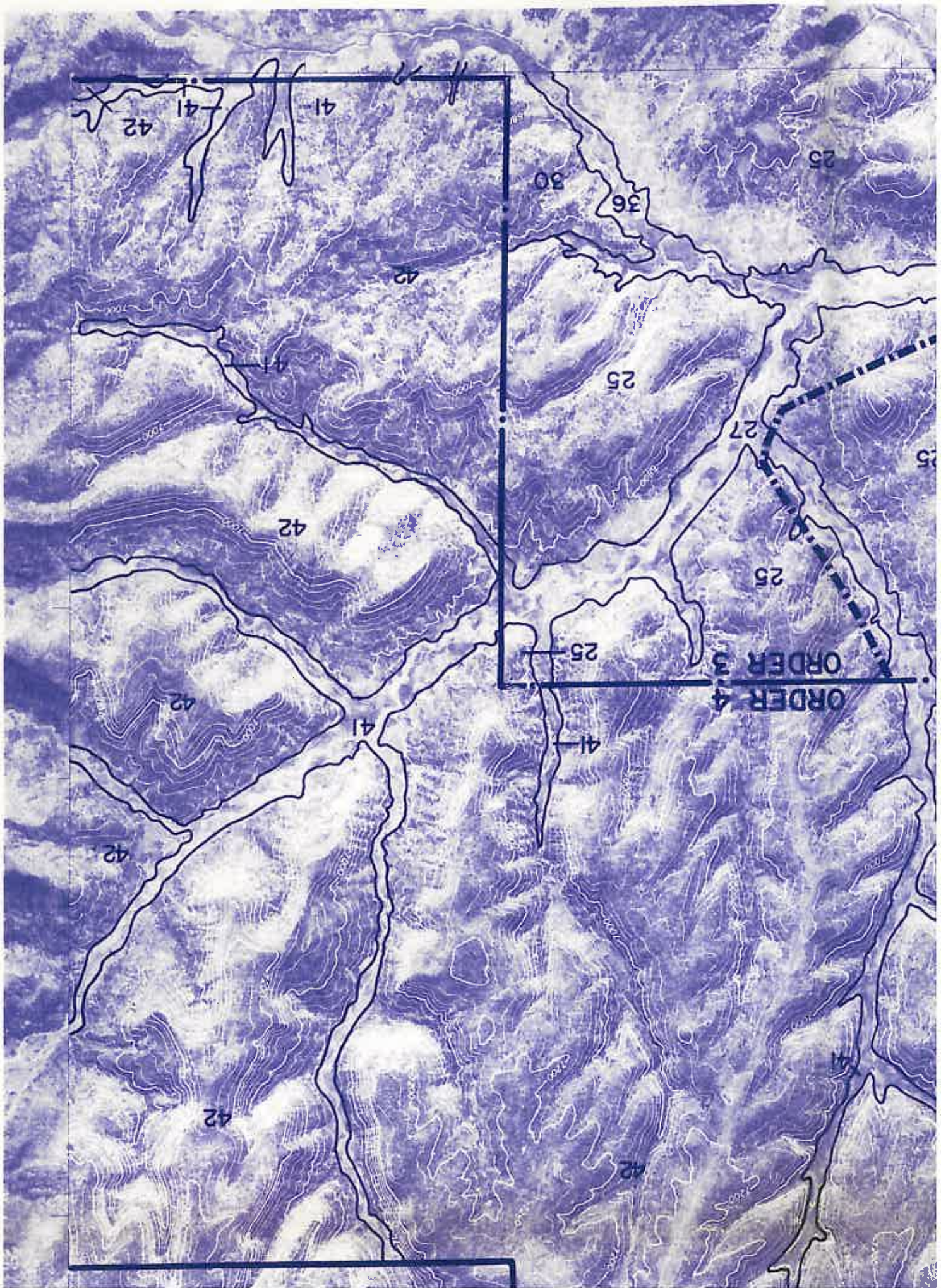
Sheet Index:

ARIS ORTHOPHOTOQUAD, PHOTO DATE 7-25-73









ARIS ORTHOPHOTOQUAD, PHOTO DATE 7-25-73

RECEIVED
BLM, PHOENIX DIST. OFF.
PHOENIX, ARIZONA
DEC 17 1985
PM 2:18
PEABODY COAL COMPANY
BLACK MESA-KAYENTA MINING
P.O. BOX 625
KAYENTA, ARIZONA 86033

DRAWN BY		APP'D BY	DATE	REVISION DESCRIPTION	C.I.
1.					N/A
2.					1:24,000
3.					SCALE
4.					NOV. 85
DRAWN BY		PJN	DATE		
SHEET NO		2 of 9			
Dwg No.		85300			

ORDER 3 AND 4
SOIL SURVEY

INTERMOUNTAIN SOIL, INC.