

-0.5', MINUS 3" BEDDING

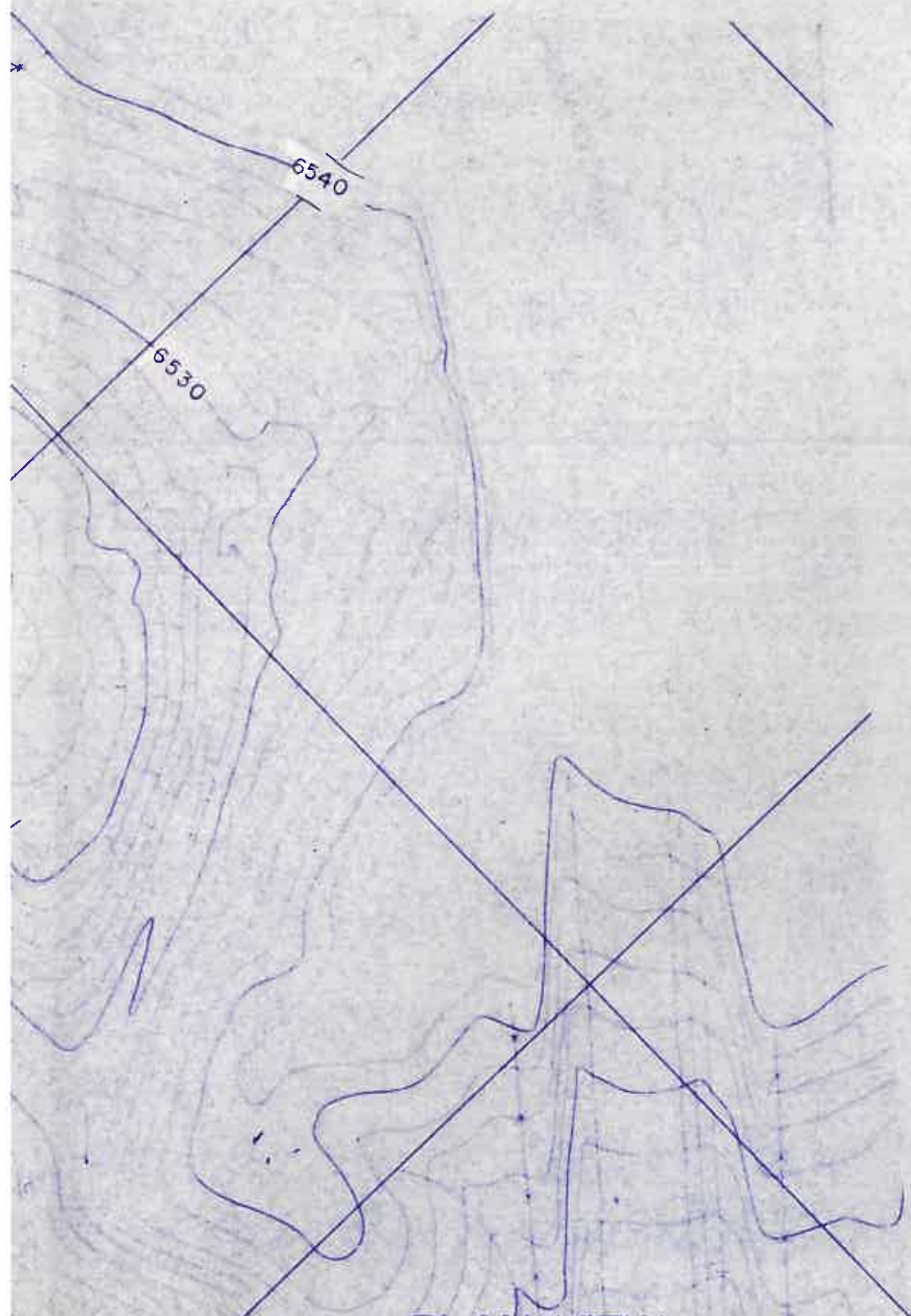
SECTION A-A'  
 VERTICAL SCALE: 1" = 5'  
 HORIZONTAL SCALE: 1" = 50'

6510  
 6505  
 6500  
 6495  
 6490

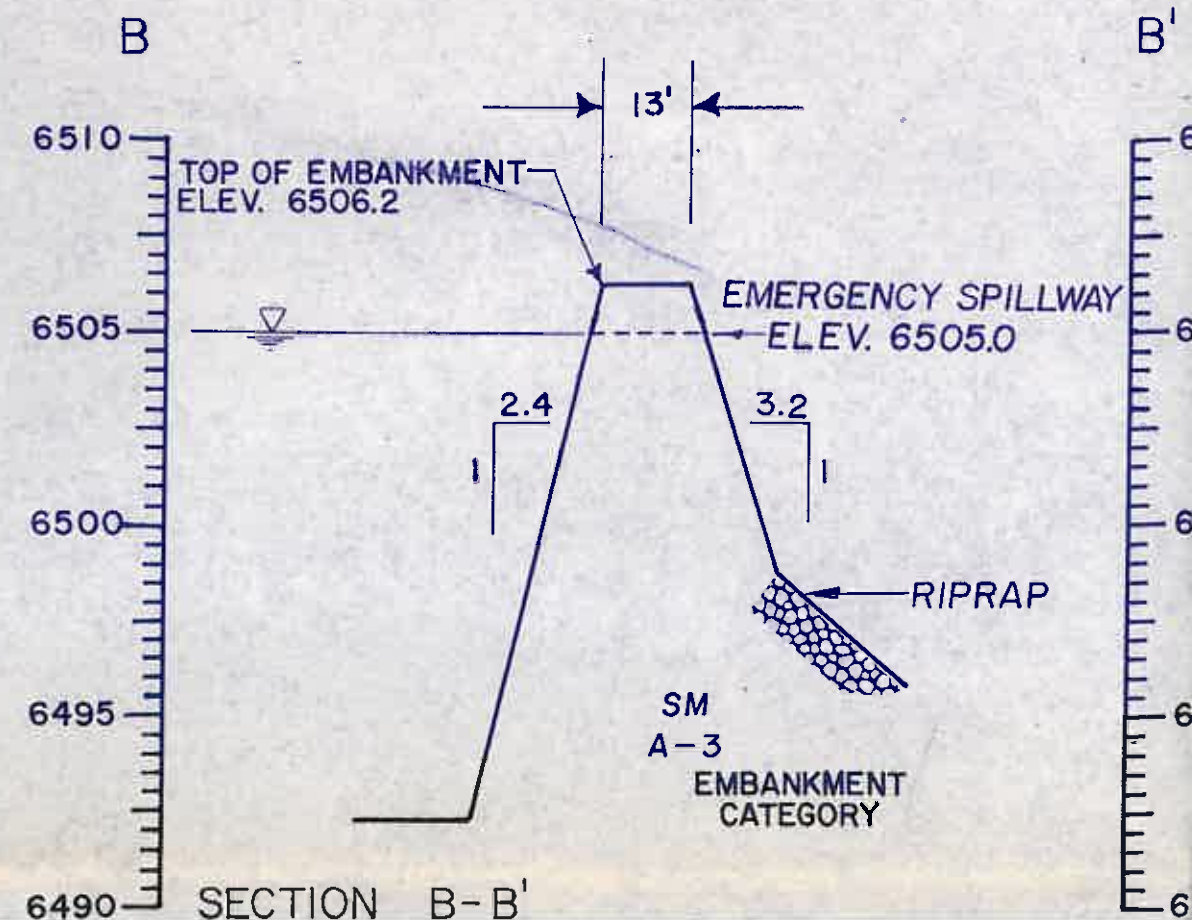
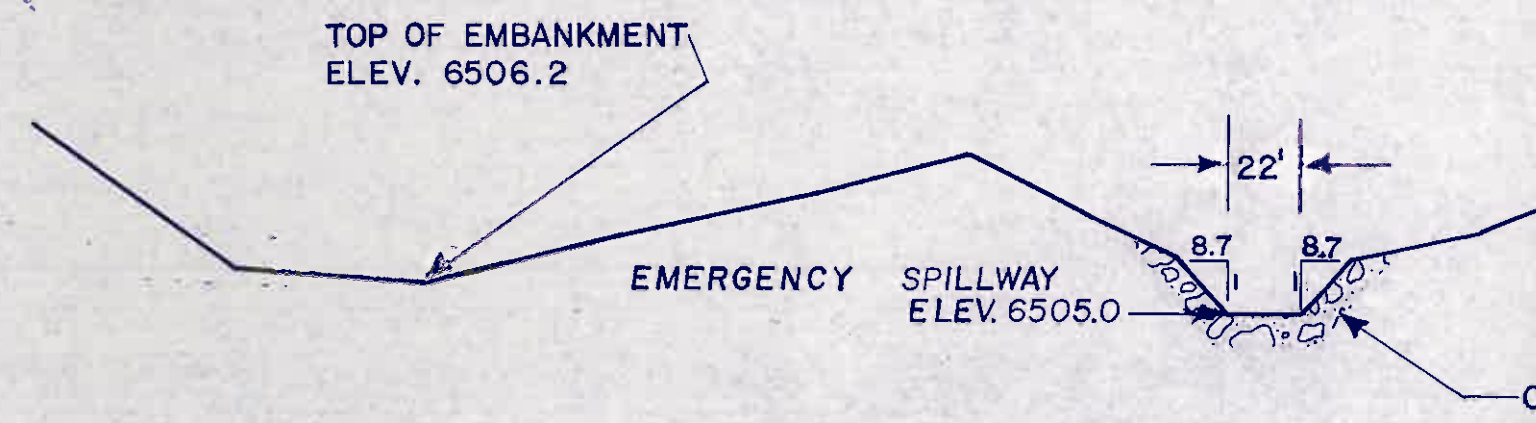
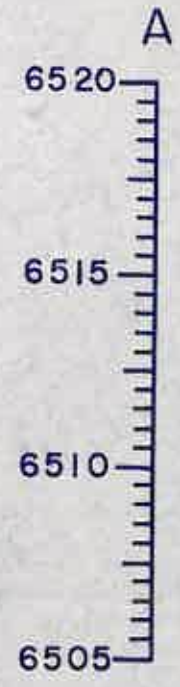
TPF-B Pond Data

Elevation (ft-msl)	Stage (ft)	Area (Acres)	Capacity (ac-ft)	Total Capacity (ac-ft)	Description
6491.7	0.00	0.00	0.00	0.00	Bottom of Pond
6494	2.30	0.08	0.09	0.09	
6496	4.30	0.15	0.23	0.32	
6498	6.30	0.20	0.35	0.67	
6500	8.30	0.28	0.48	1.15	
6502	10.30	0.38	0.66	1.81	
6504	12.30	0.50	0.88	2.69	
6505	13.30	0.57	0.54	3.23	Emergency Spillway
6506.2	14.50	0.66	0.74	3.97	Top of Embankment

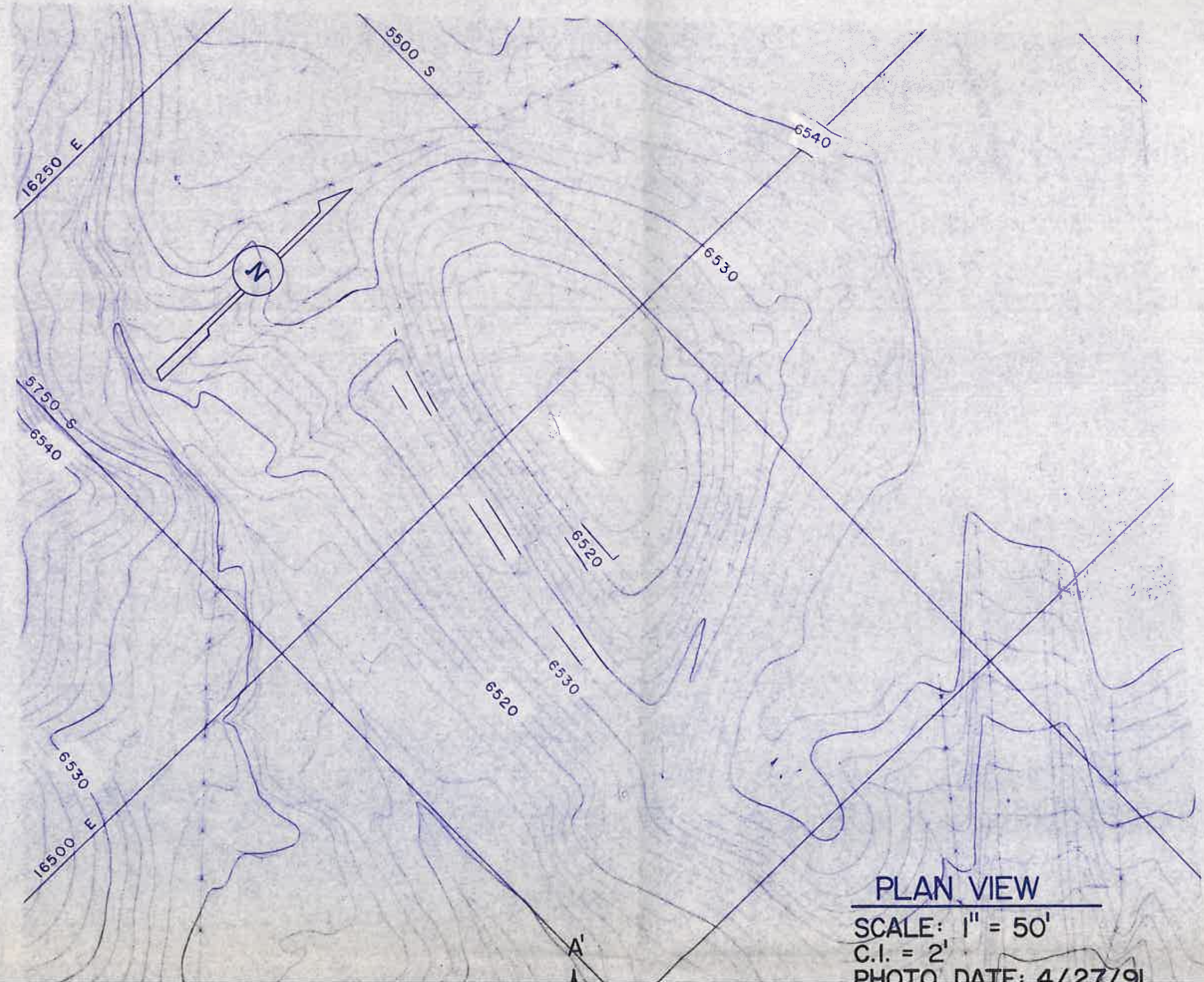
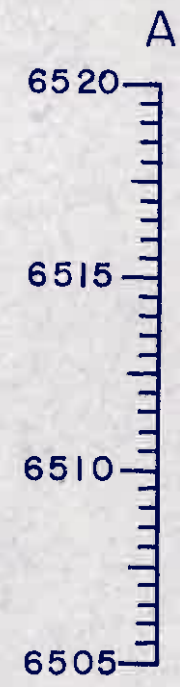




**PLAN VIEW**  
 SCALE: 1" = 50'  
 C.I. = 2'  
 PHOTO DATE: 4/27/91





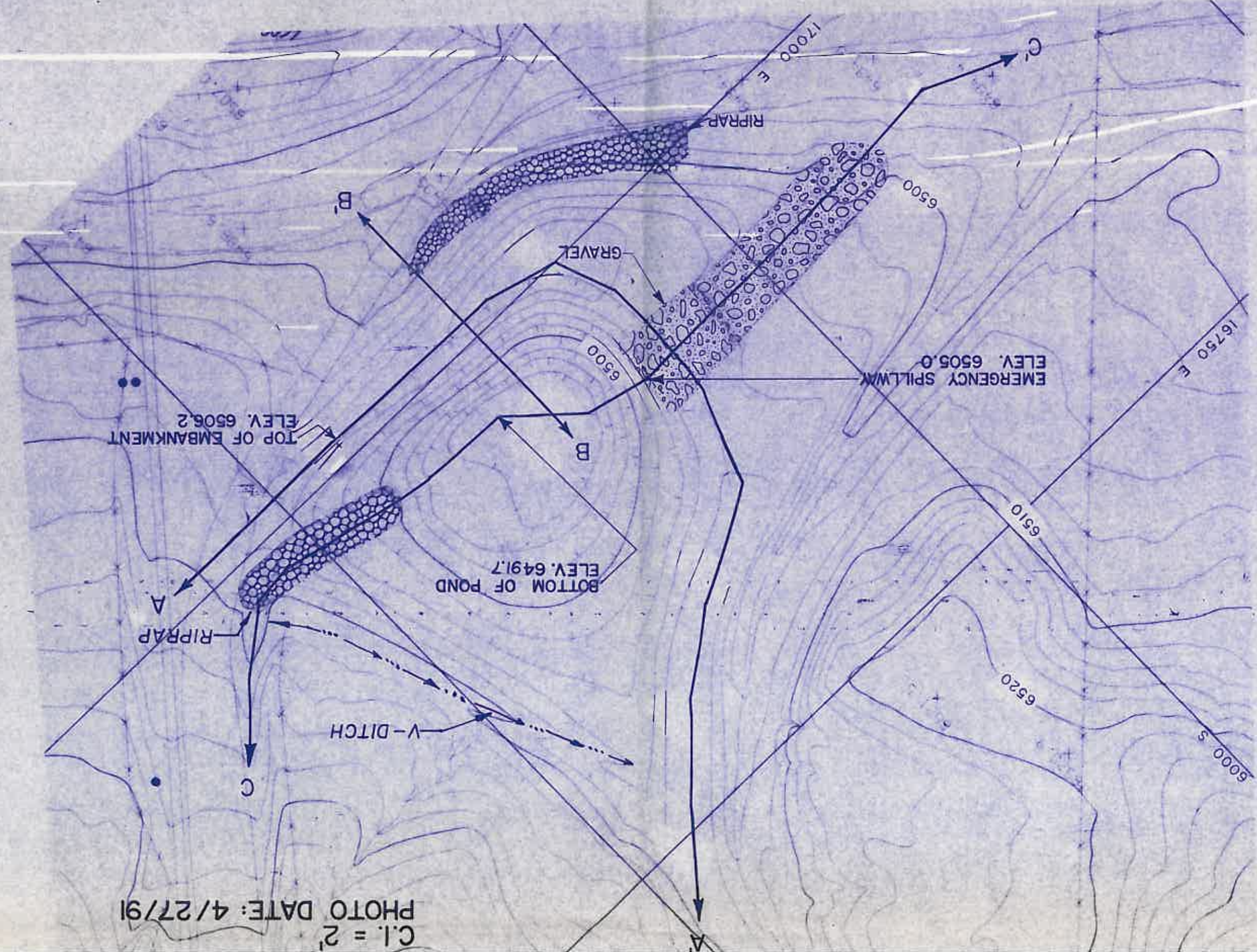


**PLAN VIEW**  
SCALE: 1" = 50'  
C.I. = 2'  
PHOTO DATE: 4/27/91



C.I. = 2'  
PHOTO DATE: 4/27/91

6490  
6495  
6500  
6505  
6510  
6515  
C



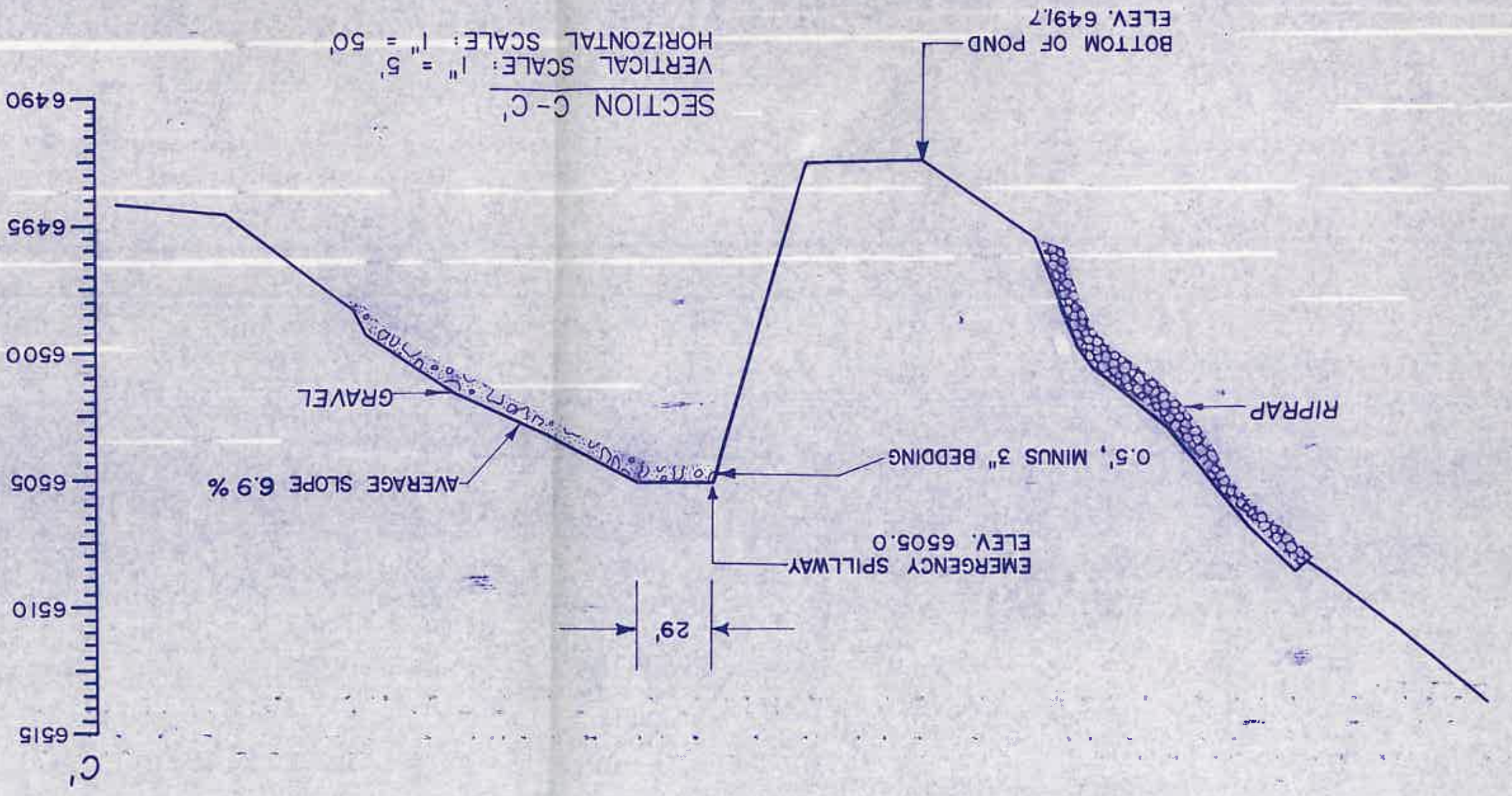


6490

SECTION B-B'

VERTICAL SCALE: 1" = 5'  
HORIZONTAL SCALE: 1" = 50'

6490



SECTION C-C'

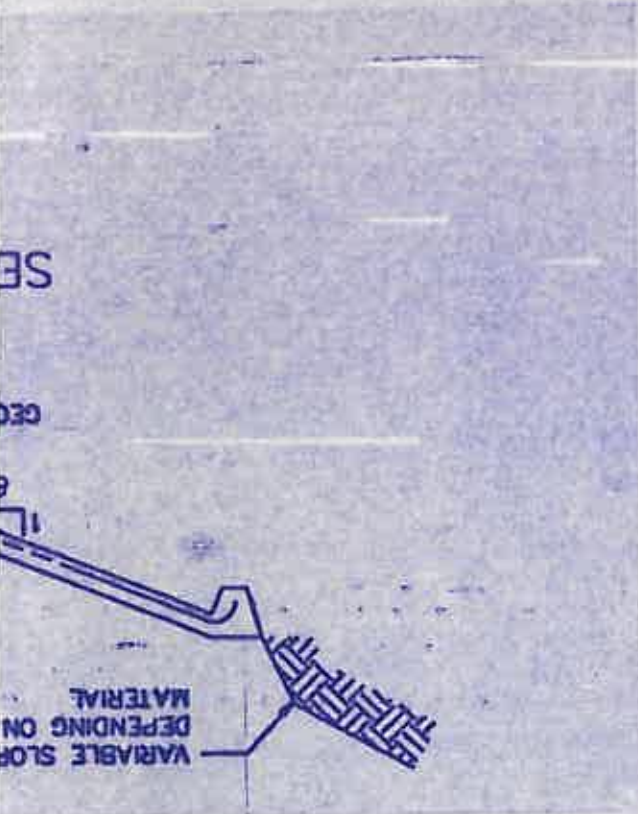
VERTICAL SCALE: 1" = 5'  
HORIZONTAL SCALE: 1" = 50'



I certify these facilities were constructed in accordance with the design and specifications approved in the mining plan filed with the State of Arizona on August 2, 1971. The design and specifications are based on the best engineering knowledge and belief.

Buck R. Woodward  
Professional Engineer  
State of Arizona  
License No. 23748

Date: AUG 2 7 1





DRG. No.:	SHEET No.:	DRAWN BY:	DATE:	SCALE:
		ALS	08/21/91	AS SHOWN
TPF-B POND AS BUILT				
PEABODY COAL COMPANY BLACK MESA - KAYENTA MINE P.O. BOX 625 KAYENTA, ARIZONA 86033				

Date \_\_\_\_\_

AUG 27 1991

I certify these facilities were constructed as designed and approved in the mining permit and that the information contained herein is accurate to the best of my knowledge and belief.

BUCK R. WOODWARD  
Professional Engineer  
No. 23748  
BUCK R. WOODWARD  
Professional Engineer  
No. 23748  
ARIZONA U.S.A.

