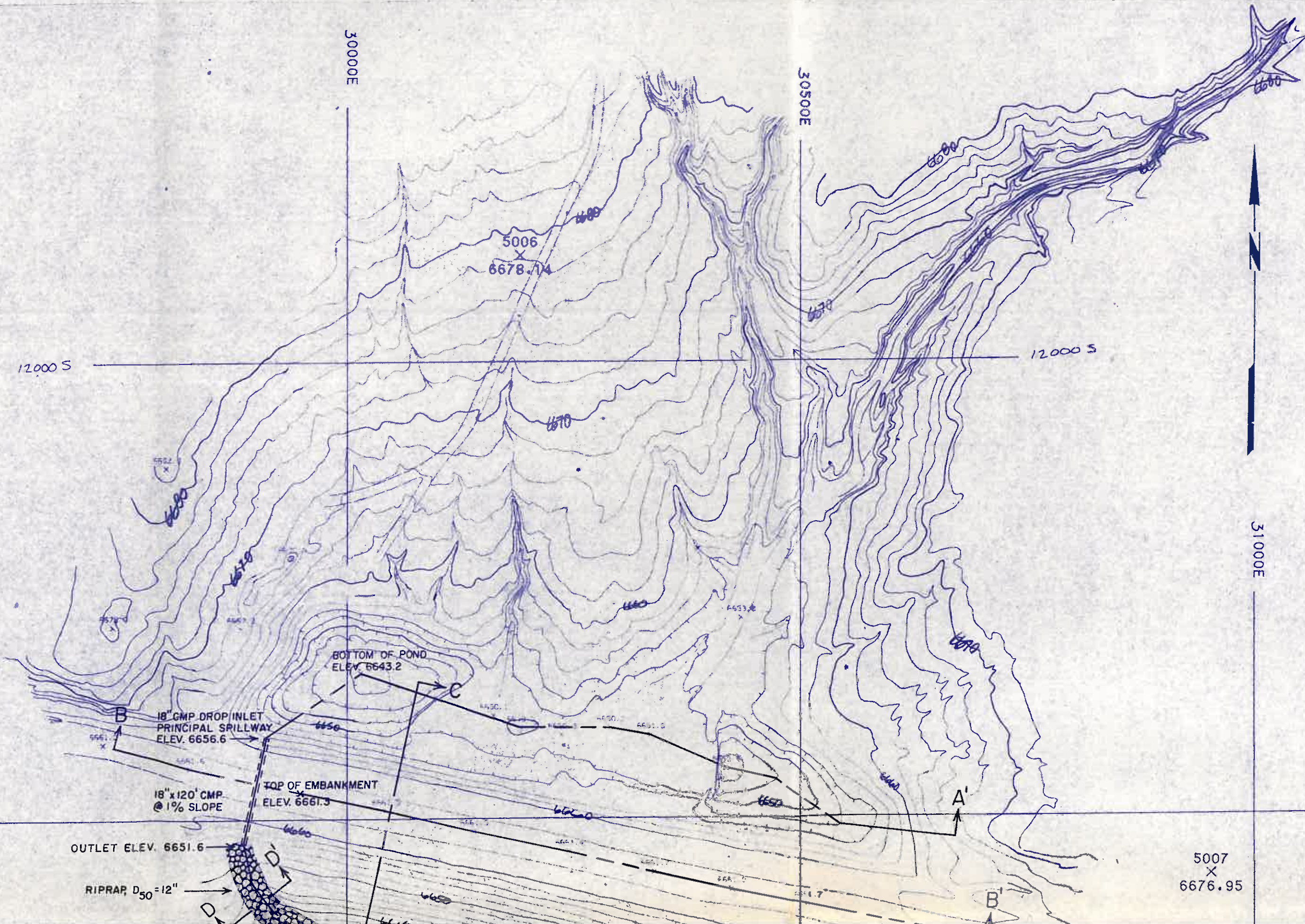
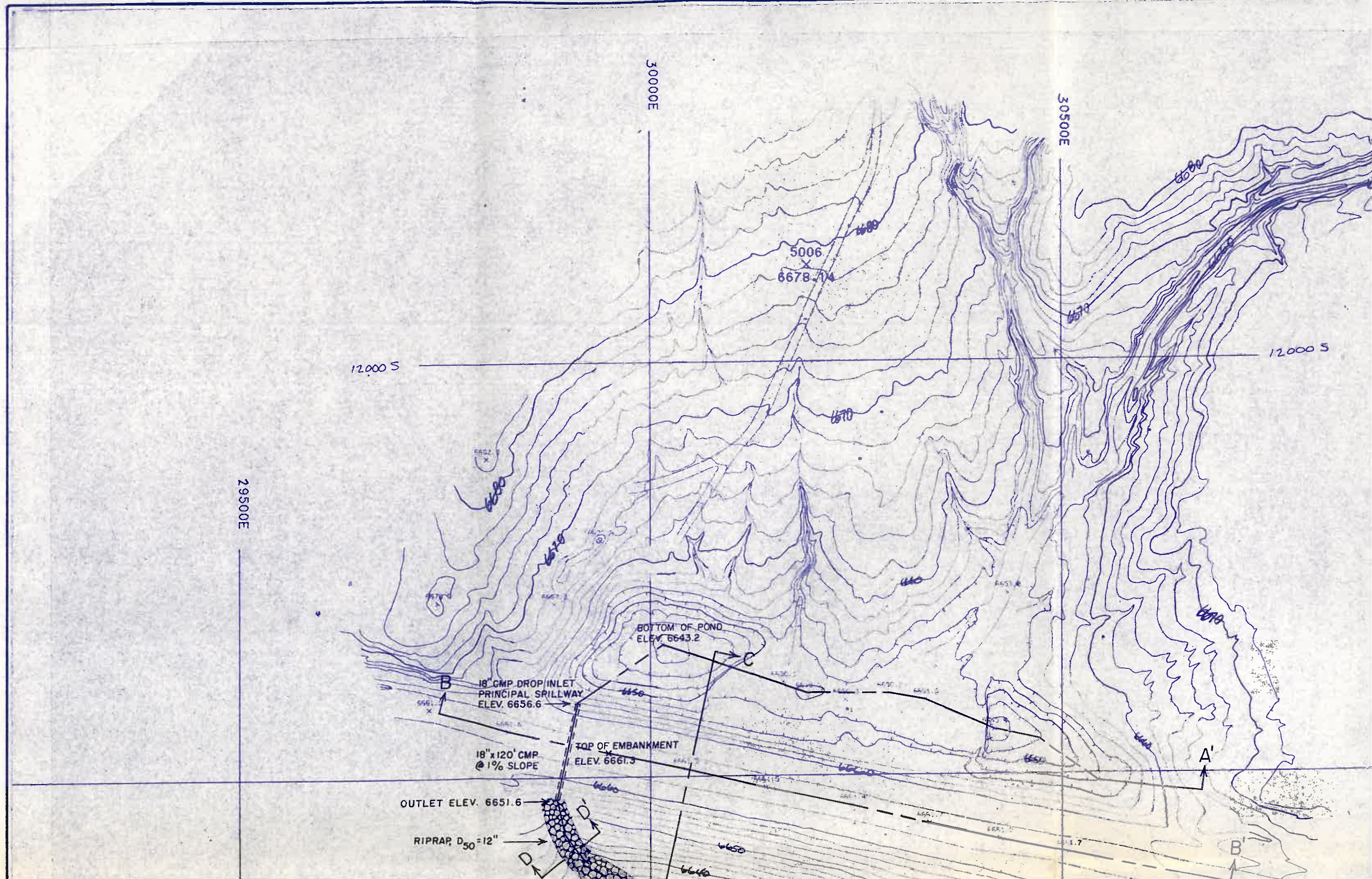


12500 S





30000E

30500E

12000 S

12000 S

29500E

5006
6678.174

BOTTOM OF POND
ELEV. 6643.2

B
18" CMP DROP INLET
PRINCIPAL SPILLWAY
ELEV. 6656.6

18" x 120' CMP
@ 1% SLOPE
TOP OF EMBANKMENT
ELEV. 6661.3

OUTLET ELEV. 6651.6

RIPRAP, D₅₀ = 12"

A'

B'

D

D

C

6670

6660

6650

6640

6630

6620

6610

6600

6590

6580

6570

6560

6640

6650

6660

6670

6680

6690

6700

6710

6720

6730

6740

6750

6760

6770

6780

6790

6800

6810

6820

6830

6840

6850

6860

6870

6880

6890

6900

6910

6920

6930

6940

6950

6960

6970

6980

6990

7000

7010

7020

7030

7040

7050

7060

7070

7080

7090

7100

7110

7120

7130

7140

7150

7160

7170

7180

7190

7200

7210

7220

7230

7240

7250

7260

7270

7280

7290

7300

7310

7320

7330

7340

7350

7360

7370

7380

7390

7400

7410

7420

7430

7440

7450

7460

7470

7480

7490

7500

7510

7520

7530

7540

7550

7560

7570

7580

7590

7600

7610

7620

7630

7640

7650

7660

7670

7680

7690

7700

7710

7720

7730

7740

7750

7760

7770

7780

7790

7800

7810

7820

7830

7840

7850

7860

7870

7880

7890

7900

7910

7920

7930

7940

7950

7960

7970

7980

7990

8000

8010

8020

8030

8040

8050

8060

8070

8080

8090

8100

8110

8120

8130

8140

8150

8160

8170

8180

8190

8200

8210

8220

8230

8240

8250

8260

8270

8280

8290

8300

8310

8320

8330

8340

8350

8360

8370

8380

8390

8400

8410

8420

8430

8440

8450

8460

8470

8480

8490

8500

8510

8520

8530

8540

8550

8560

8570

8580

8590

8600

8610

8620

8630

8640

8650

8660

8670

8680

8690

8700

8710

8720

8730

8740

8750

8760

8770

8780

8790

8800

8810

8820

8830

8840

8850

8860

8870

8880

8890

8900

8910

8920

8930

8940

8950

8960

8970

8980

8990

9000

9010

9020

9030

9040

9050

9060

9070

9080

9090

9100

9110

9120

9130

9140

9150

9160

9170

9180

9190

9200

9210

9220

9230

9240

9250

9260

9270

9280

9290

9300

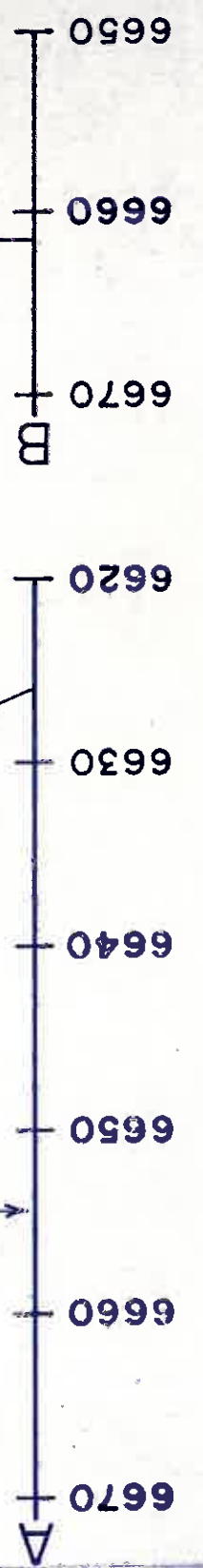
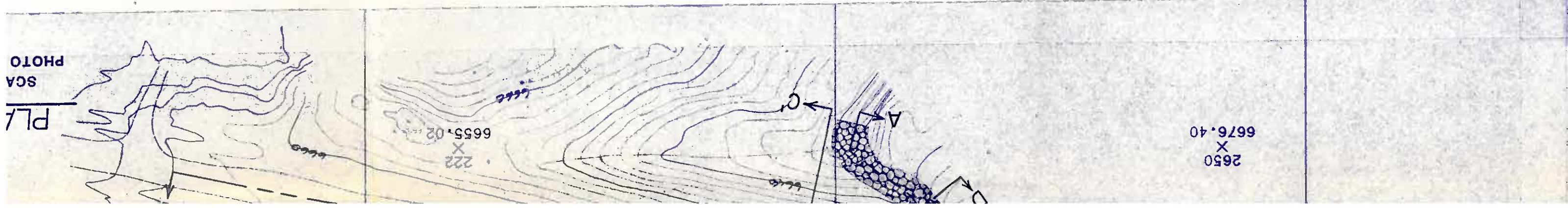
9310

9320

9330

9340

9350



SECTION B-B'
 SCALE: VERT. 1" = 10'
 HORIZ. 1" = 50'

SECTION A-A'
 SCALE: VERT. 1" = 10'
 HORIZ. 1" = 50'

PRINCIPAL SPILLWAY

TOP OF DAM, ELEV. 6661.3

BOTTOM OF POND
 ELEV. 6643.2

ANTI-SEEP COLLARS
 ON 18" X 120 CMP
 SLOPE = 1%

18" CMP RISER
 W/ TRASH RACK
 ELEV. 6656.6

PRINCIPAL SPILLWAY

TOP OF EMBANKMENT
 ELEV. 6661.3

70' MIN.

3.9'

4'

RIPRAP, $D_{50} = 12"$

OUTLET ELEV. 6651.6

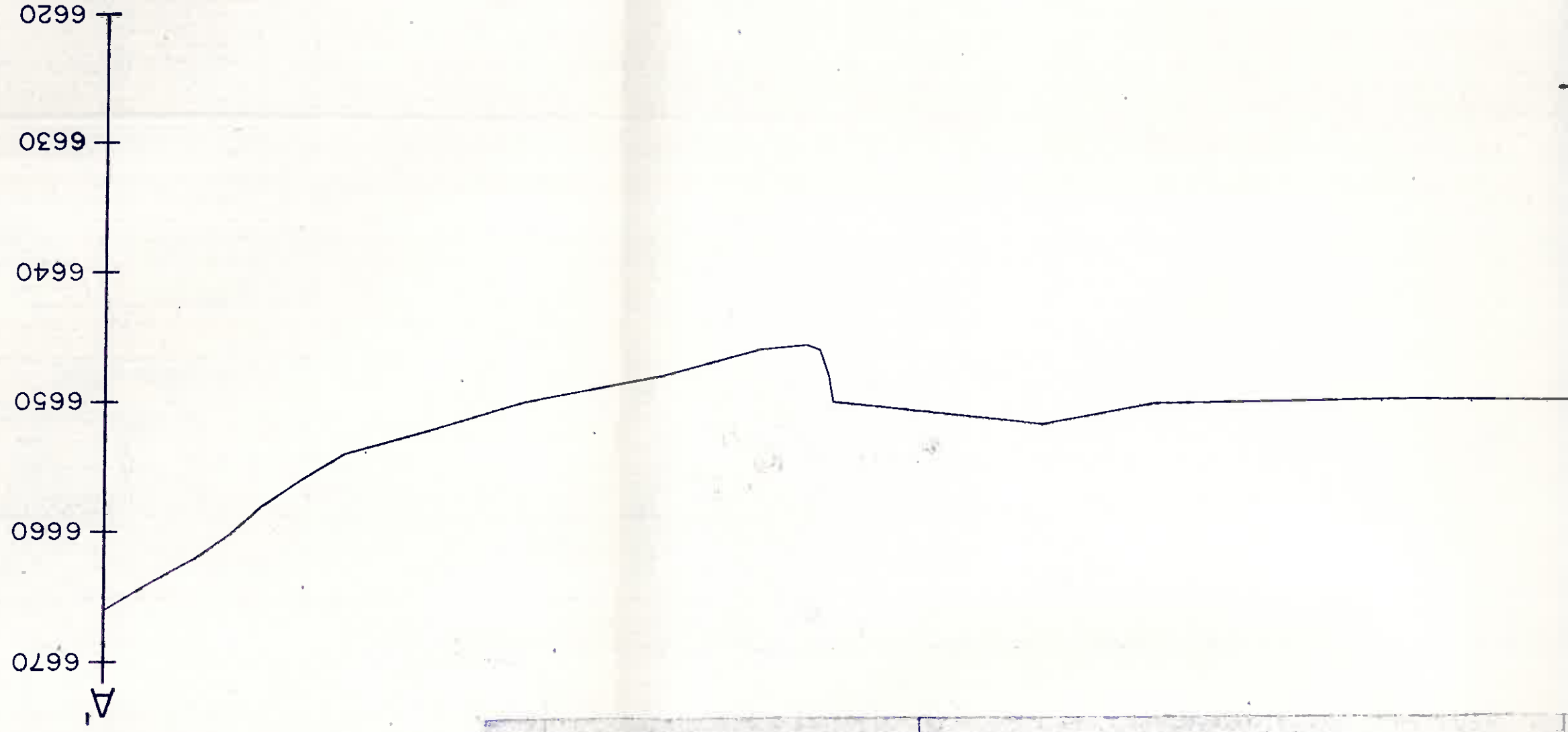
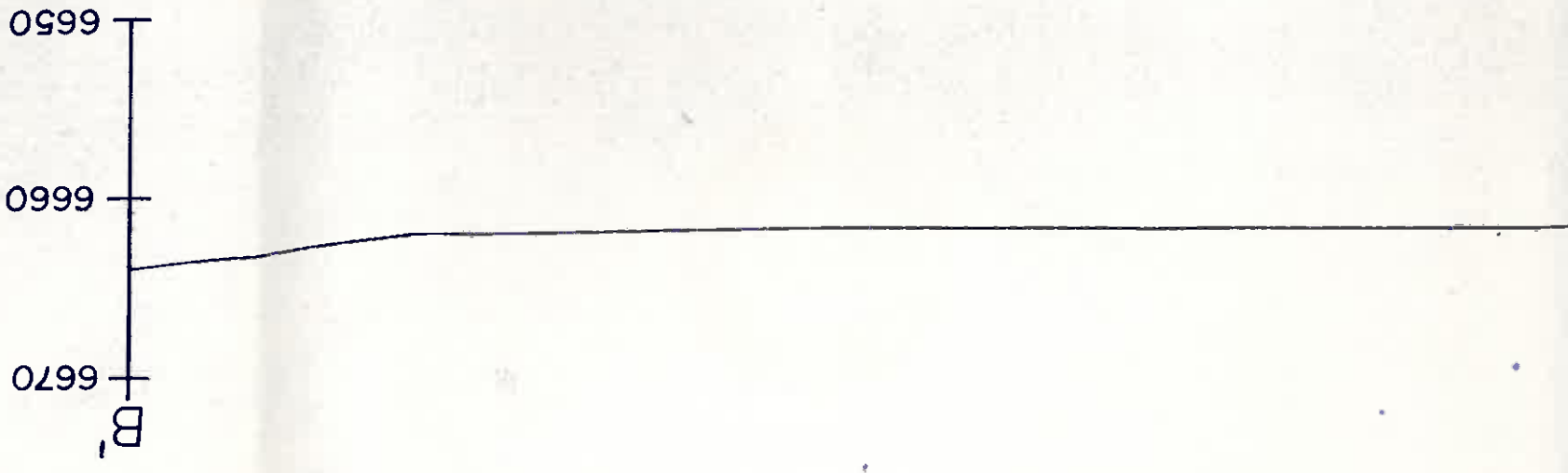
12%
 OUTFLOW CHANNEL SLOPE

2650
 X
 6676.40

222
 X
 6655.02



PLAN VIEW
 SCALE: 1" = 100'
 PHOTO DATE: 12-1-88



Elevation	Stage	Area (Acres)
6643.2	0	0
6644.0	.8	.03
6646.0	2.8	.18
6648.0	4.8	.35
6650.0	6.8	.57
6652.0	8.8	1.38
6654.0	10.8	2.24
6656.0	12.8	3.06
6656.6	13.4	3.24
6658.0	14.8	3.84
6660.0	16.8	4.72
6661.3	18.1	5.79

I certify this Siltation Structure was constructed in accordance with the approved mining permit and that the information contained herein fully describes the constructed structure to the best of my knowledge and belief.



James G. Schlemmer

James G. Schlemmer
 Senior Engineer
 Peabody Energy Company

Arizona P.E. #18782

Date: JUN 19 1989

PRINCIPAL
 NOT

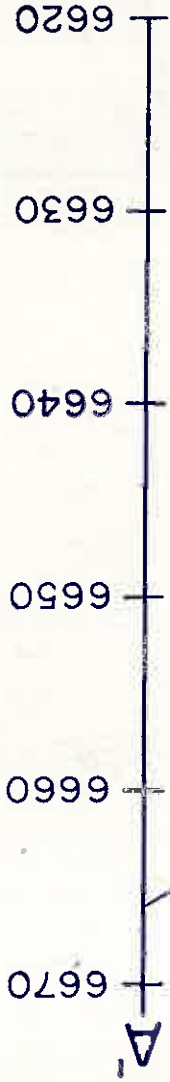


PRINCIPAL SPILLWAY

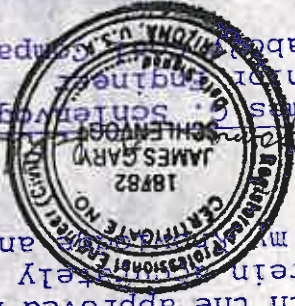
NOT DRAWN TO SCALE

N6-12

Elevation (ft.-MSL)	Stage (ft.)	Area (Acres)	Capacity (Ac.-ft.)	Total Capacity (Ac.-ft.)	Description
6643.2	0	0	0	0	Bottom of Pond
6644.0	.8	.03	.01	.01	
6646.0	2.8	.18	.21	.22	
6648.0	4.8	.35	.53	.75	
6650.0	6.8	.57	.92	1.67	
6652.0	8.8	1.38	1.95	3.62	
6654.0	10.8	2.24	3.62	7.24	
6656.0	12.8	3.06	5.30	12.54	
6656.6	13.4	3.24	1.89	14.43	Principal Spillway
6658.0	14.8	3.84	4.96	19.39	
6660.0	16.8	4.72	8.56	27.95	
6661.3	18.1	5.79	6.83	34.78	Top of Embankment



I certify this Siltation Structure was constructed in accordance with the approved mining permit and that the information contained herein fully describes the constructed structure to the best of my knowledge, skill and belief.



James G. Schlemmer
 JAMES G. SCHLEMMER
 License No. 18782
 State of Arizona

Arizona P.E. #18782
 Date: JUN 19 1989

PEABODY COAL COMPANY BLACK MESA - KAYENTA MINE 1300 SOUTH YALE, FLAGSTAFF, ARIZONA 86001	
N6-T2 (AS-BUILT)	
SCALE: AS SHOWN	DRAWN BY: J.H.J.
DATE: 3-3-89	DRAWING NO:
REVISION:	APPROVED BY: