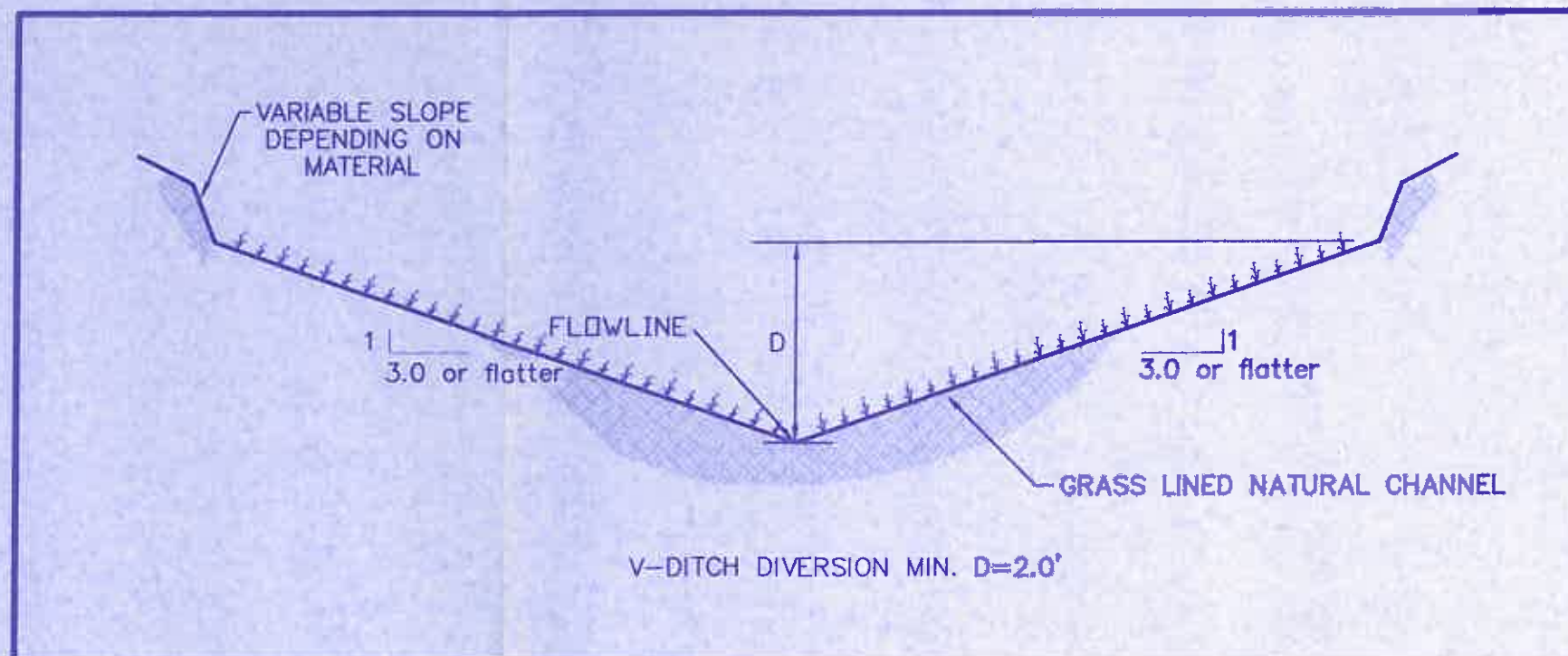
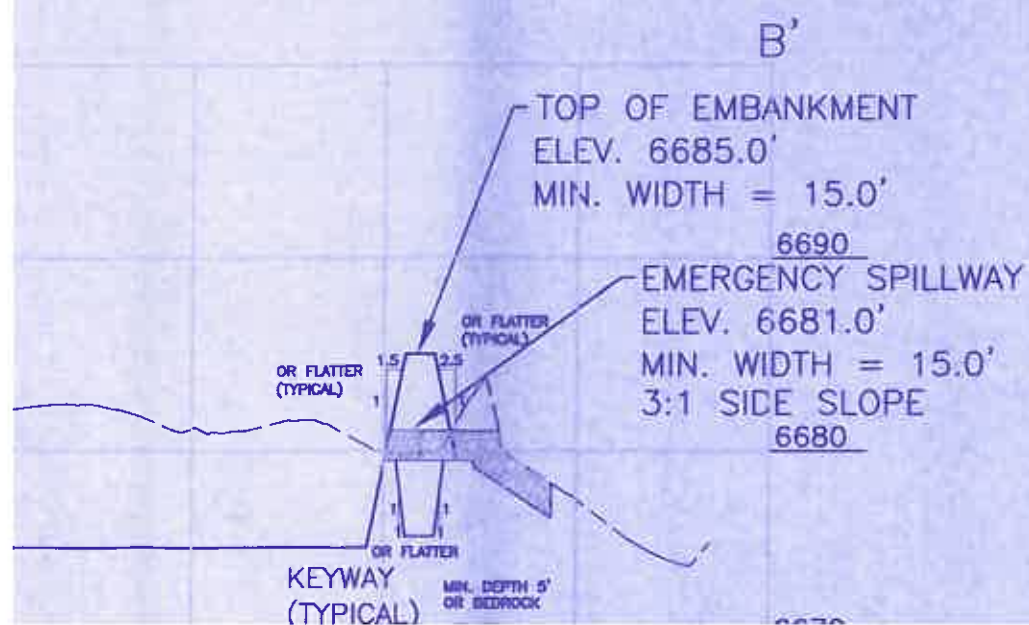
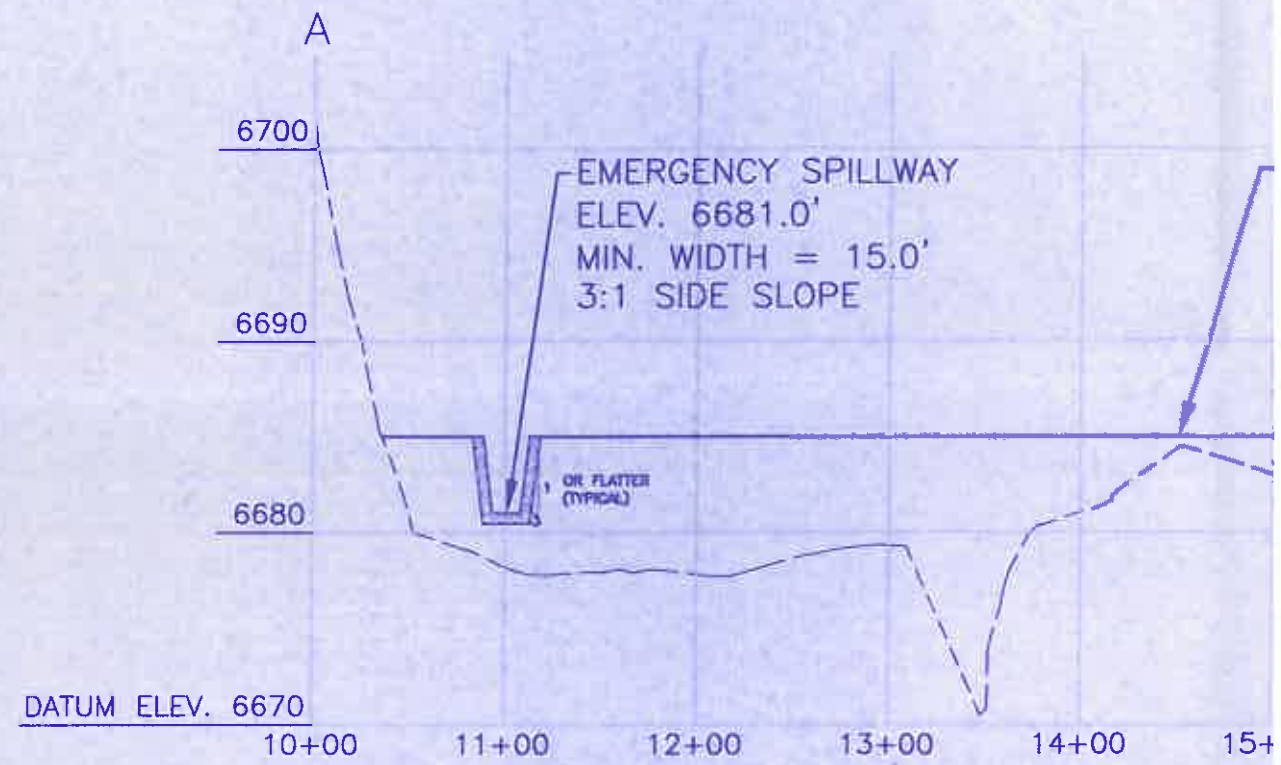
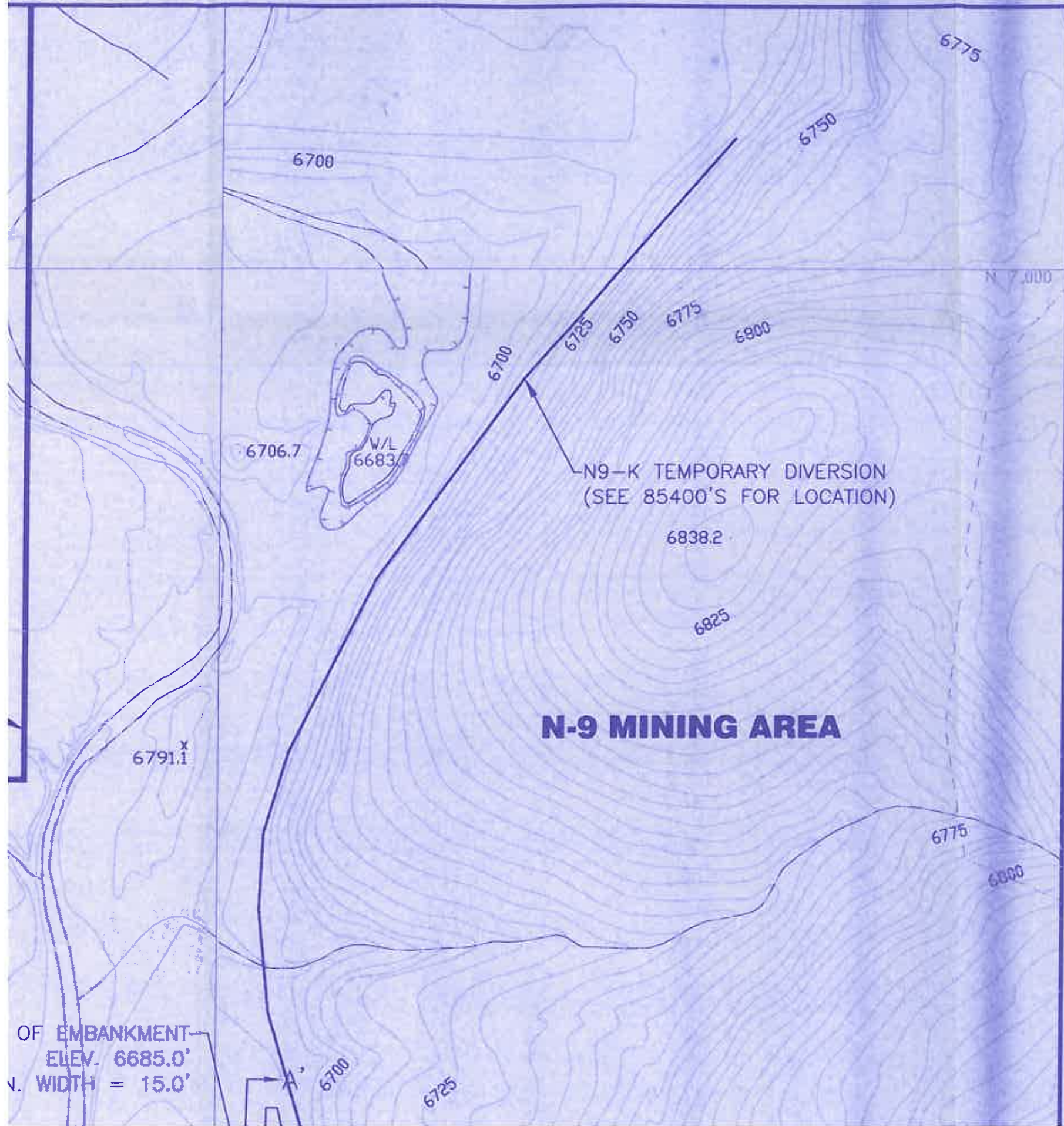


N9-K POND STAGE CAPACITY TABLE

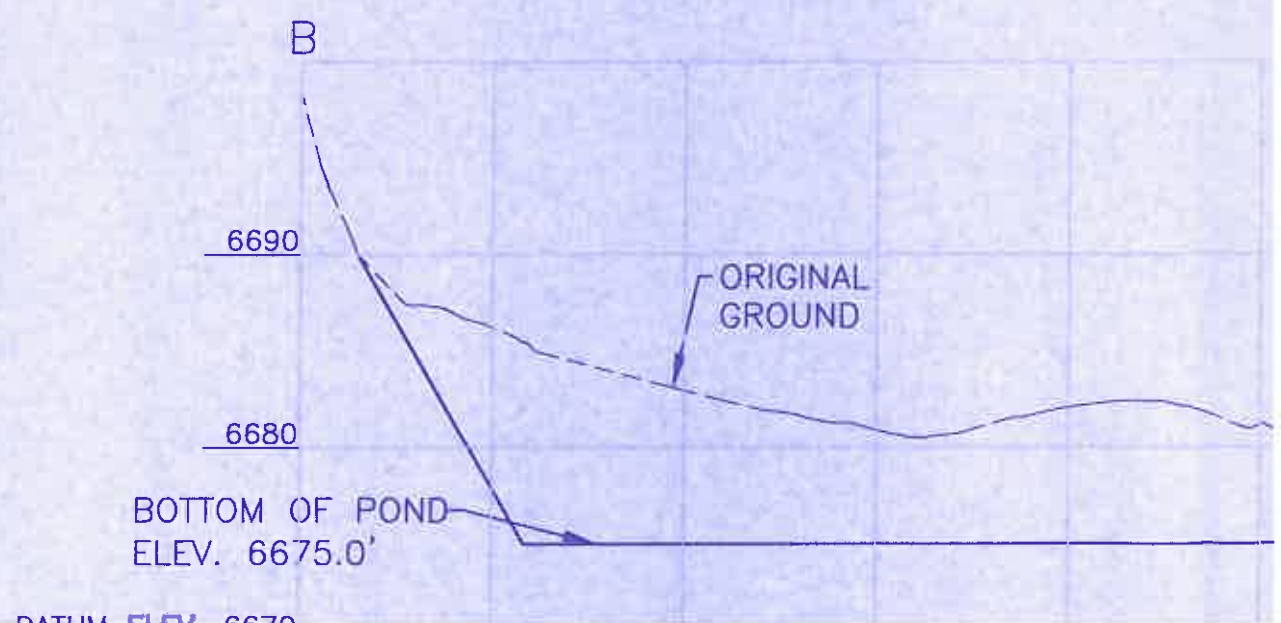
ELEVATION (ft-msl)	STAGE (ft)	AREA (acres)	TOTAL CAPACITY (ac-ft)	DESCRIPTION
6675.0	0.0	0.67	0.00	BOTTOM OF POND
6680.0	5.0	1.01	4.20	INCISED ELEV.
6681.0	6.0	1.09	5.25	EMERGENCY SPILLWAY
6685.0	10.0	1.42	10.26	TOP OF EMBANKMENT

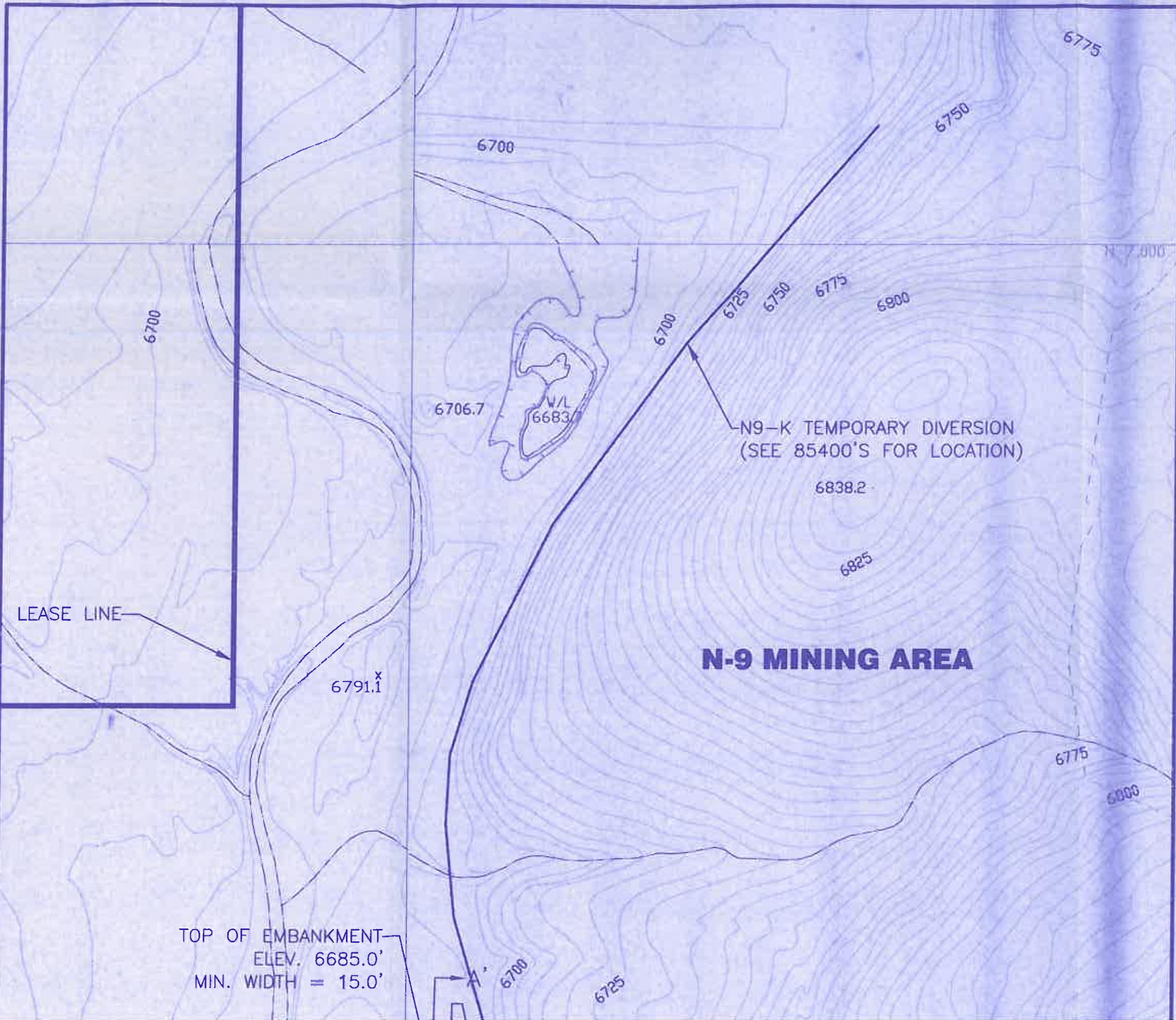
SECTION B - B'
 HORIZ. 1" = 100'
 VERT. 1" = 10'





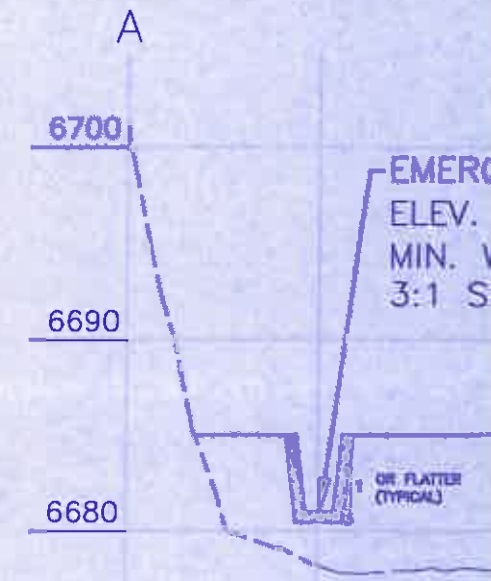
SECTION B
SCALE: HORIZ. 1"
VERT. 1"



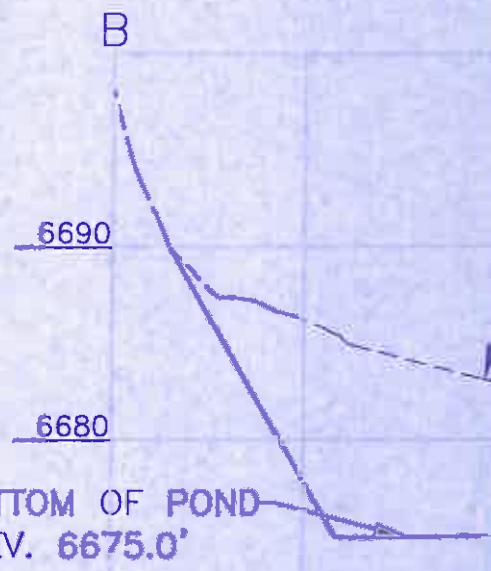


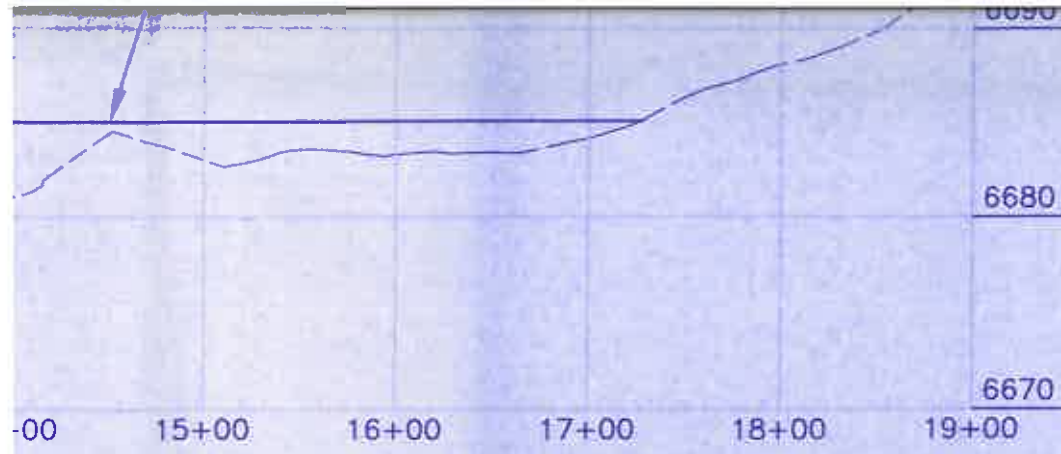
TOP OF EMBANKMENT
ELEV. 6685.0'
MIN. WIDTH = 15.0'

N9-K TEMPORARY DIVERSION
(SEE 85400'S FOR LOCATION)



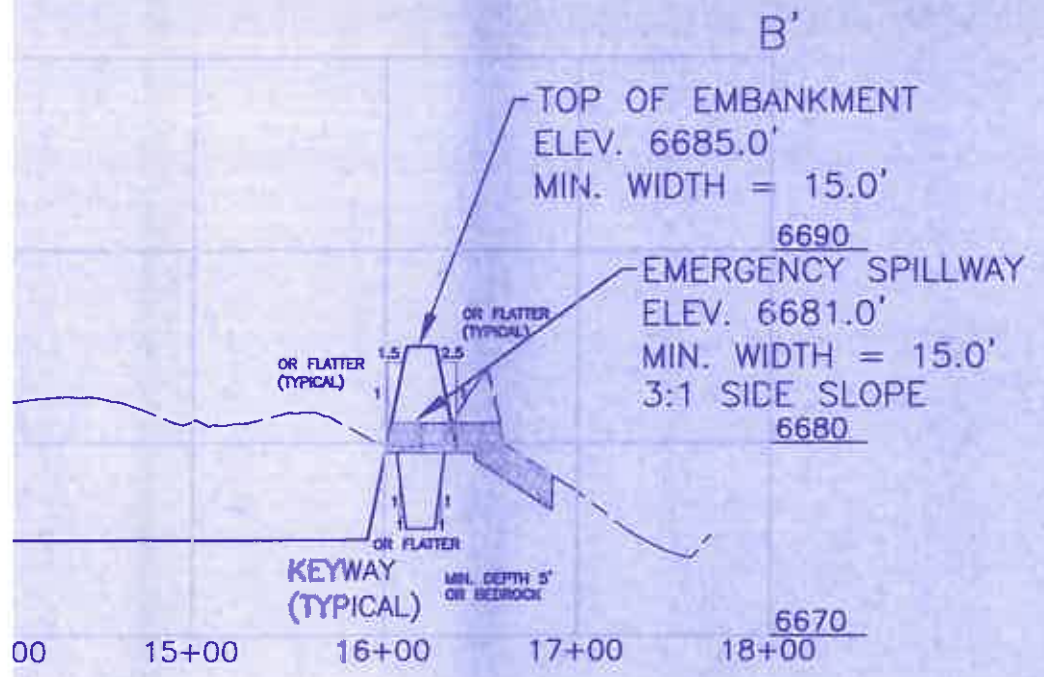
DATUM ELEV. 6670
10+00 11+00 12+00



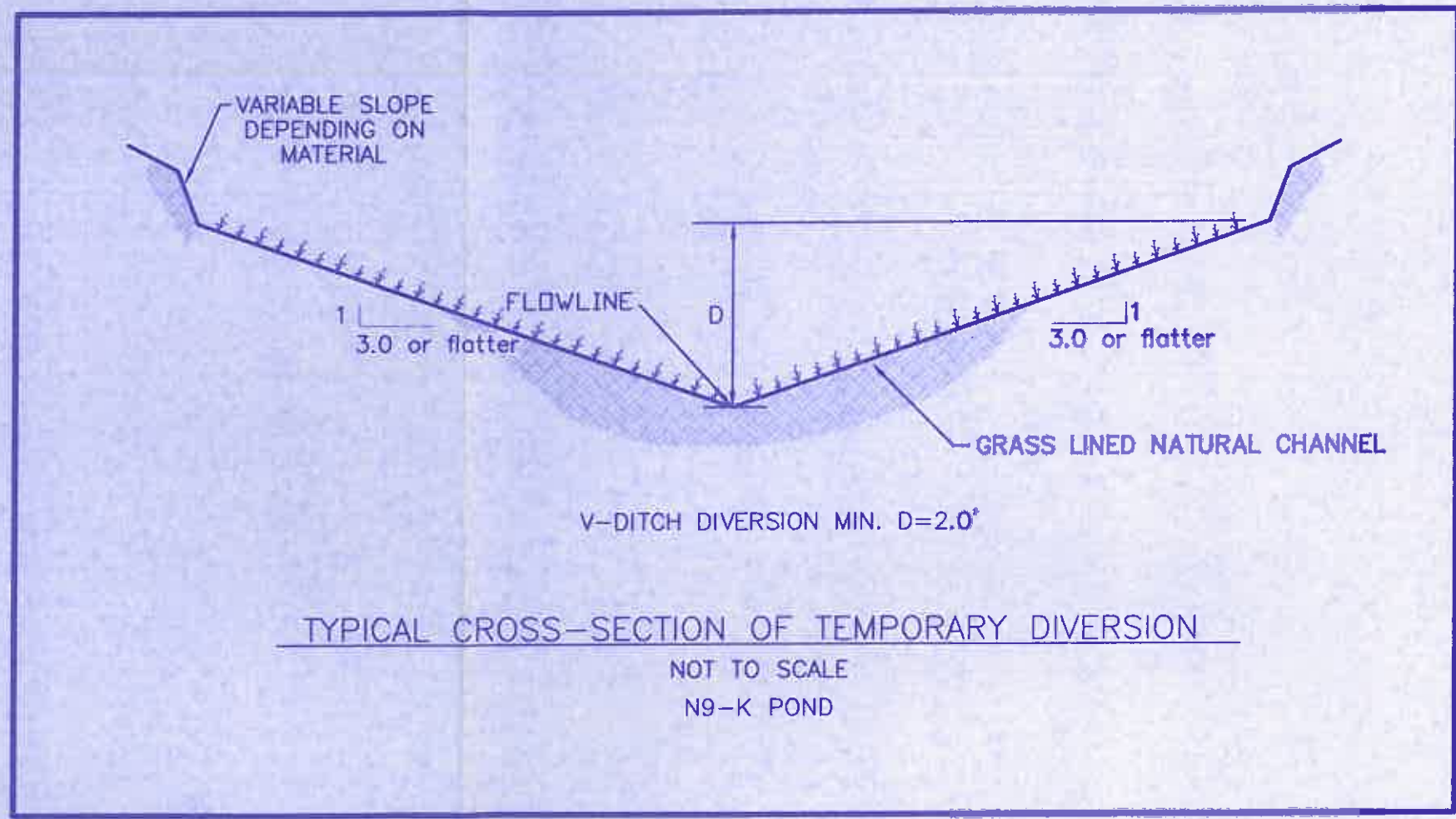


ELEVATION (ft-msl)	STAGE (ft)	AREA (acres)	CAPACITY (ac-ft)	DESCRIPTION
6675.0	0.0	0.67	0.00	BOTTOM OF POND
6680.0	5.0	1.01	4.20	INCISED ELEV.
6681.0	6.0	1.09	5.25	EMERGENCY SPILLWAY
6685.0	10.0	1.42	10.26	TOP OF EMBANKMENT

SECTION B - B'
 HORIZ. 1" = 100'
 VERT. 1" = 10'



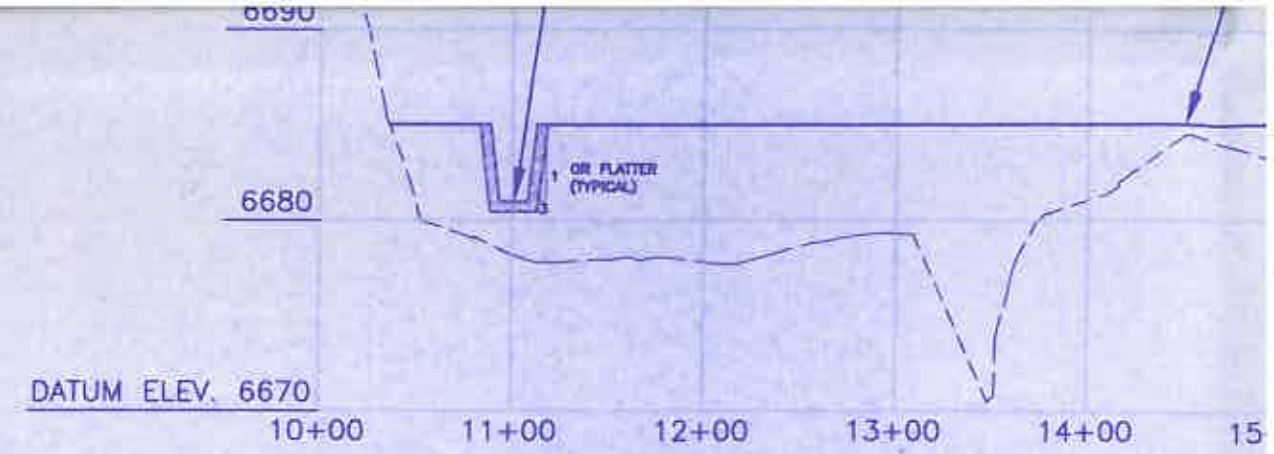
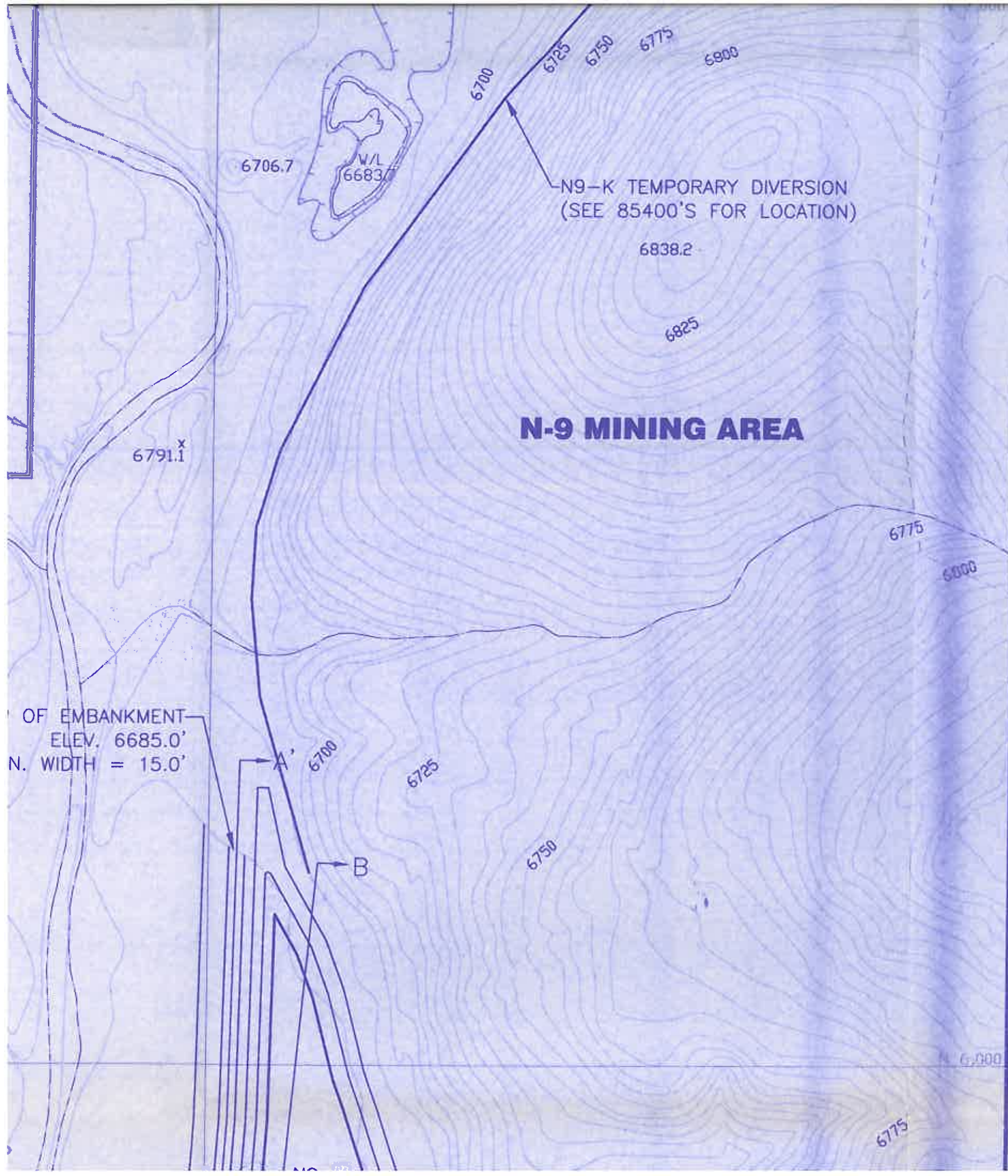
SECTION B - B'
 1" = 100'
 1" = 10'



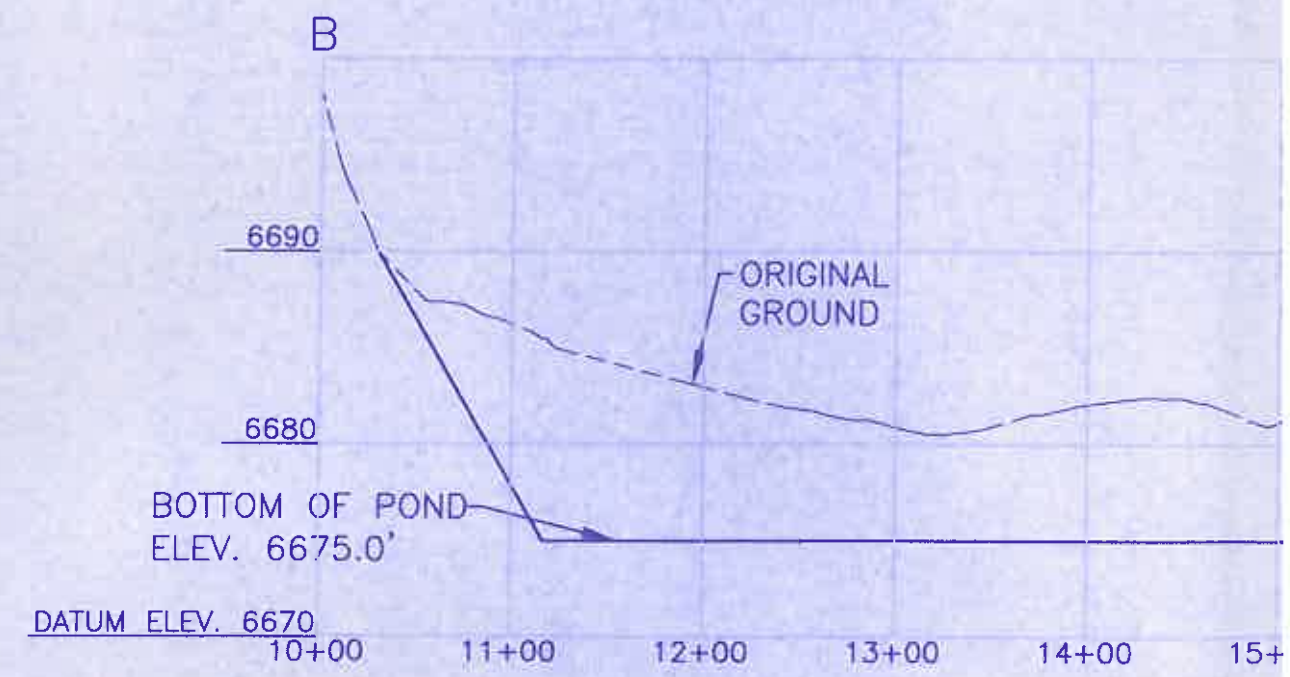
C'

6700

TOP OF EMBANKMENT

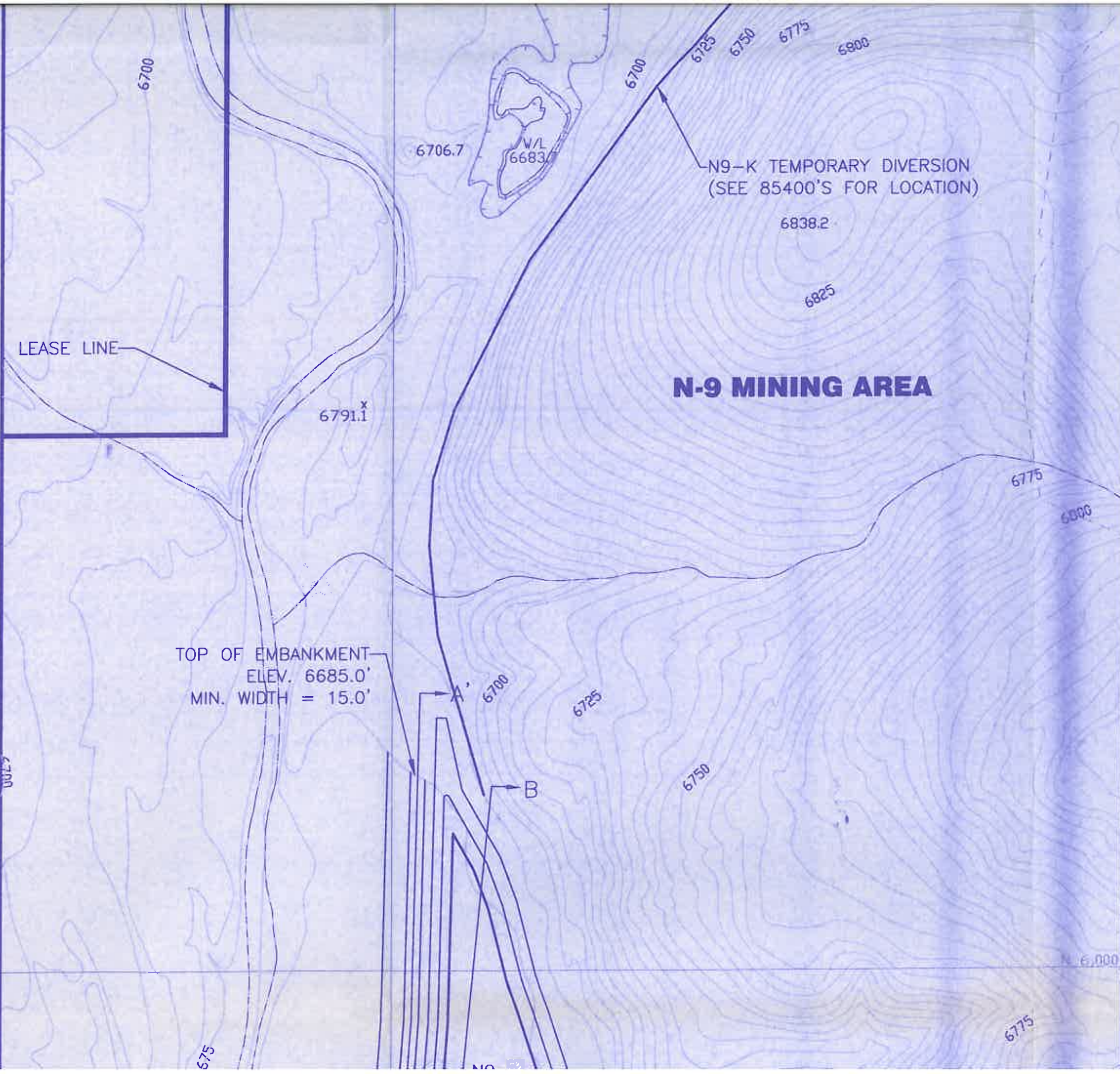


SECTION B - B'
SCALE: HORIZ. 1" = 100'
VERT. 1" = 10'



SECTION B - B'
SCALE: HORIZ. 1" = 100'
VERT. 1" = 10'

C
6700

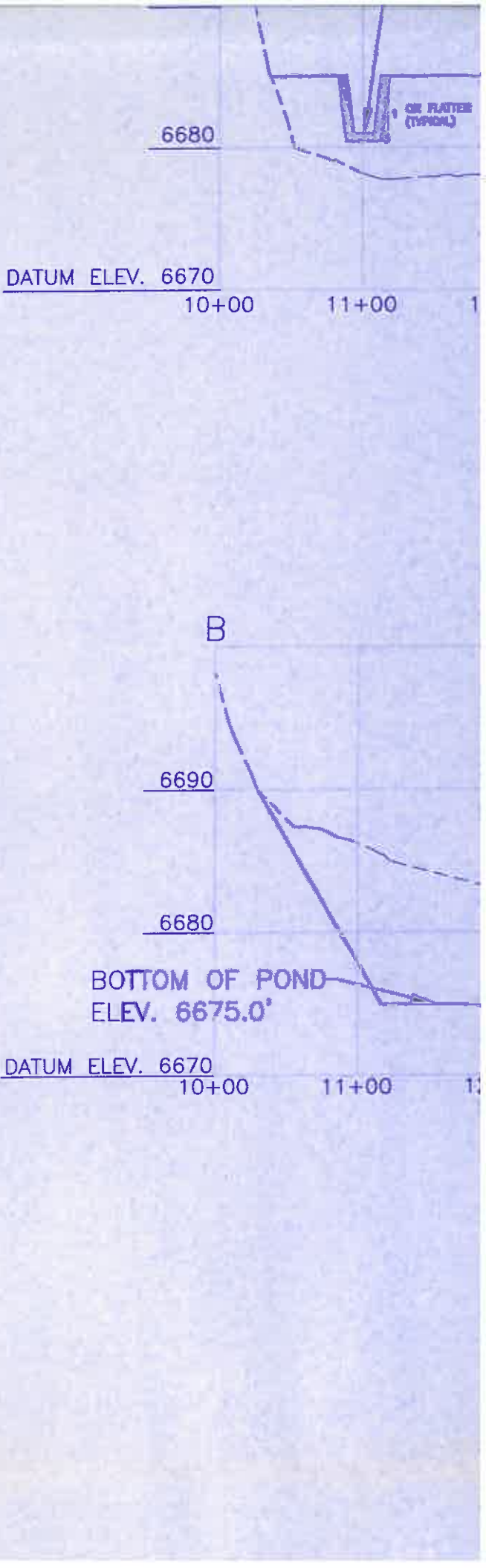


LEASE LINE

N-9 MINING AREA

TOP OF EMBANKMENT
ELEV. 6685.0'
MIN. WIDTH = 15.0'

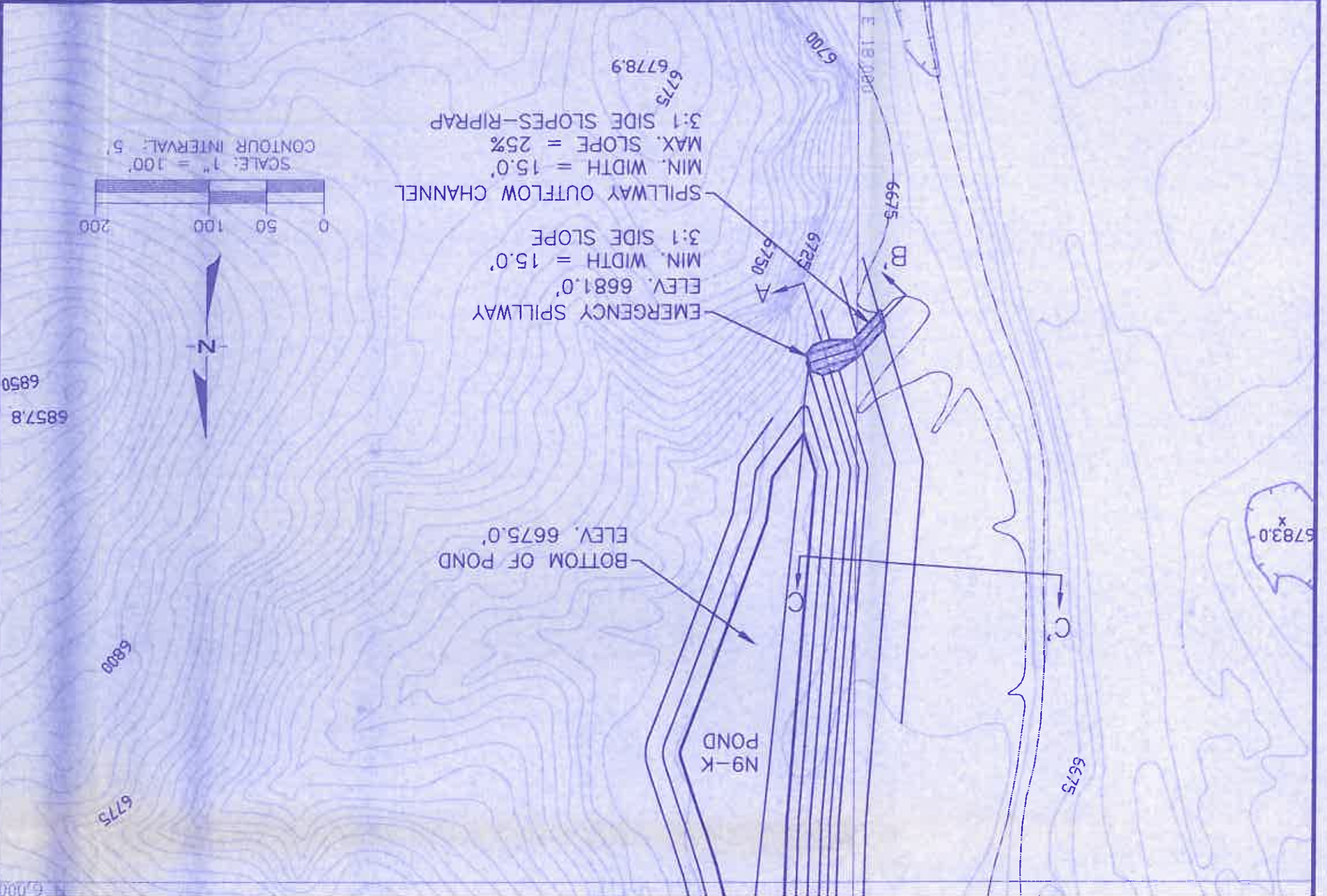
N9-K TEMPORARY DIVERSION
(SEE 85400'S FOR LOCATION)



DATUM ELEV. 6670
10+00 11+00

BOTTOM OF POND
ELEV. 6675.0'

DATUM ELEV. 6670
10+00 11+00



EMERGENCY SPILLWAY
ELEV. 6681.0'
MIN. WIDTH = 15.0'
3:1 SIDE SLOPE

SPILLWAY OUTFLOW CHANNEL
MIN. WIDTH = 15.0'
MAX. SLOPE = 25%
3:1 SIDE SLOPES-RIPRAP

BOTTOM OF POND
ELEV. 6675.0'



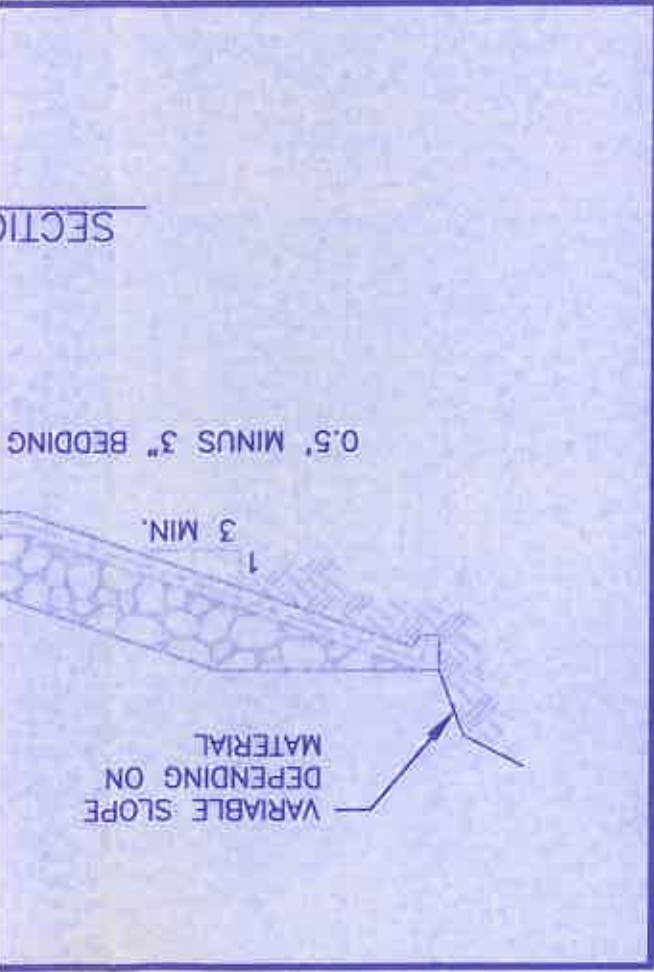
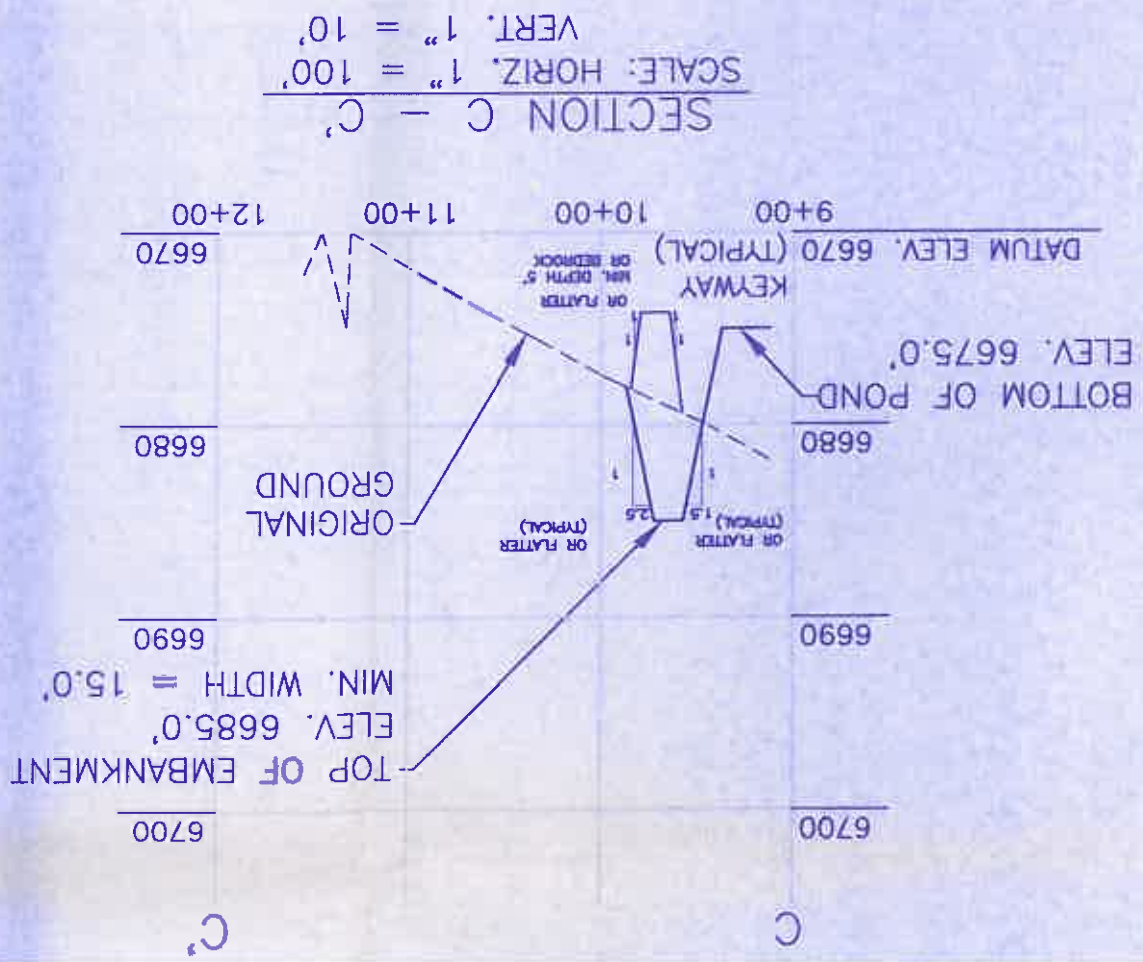
Registered Professional Engineer's Certification
JAMES G. SCHLENNVGT
18782
JAMES G. SCHLENNVGT
Engineering Supervisor
Peabody Western Coal Company
Date: DEC 23 2018
ARIZONA P.E. 18782

BOTTOM OF POND
ELEV. 6675.0'
DATUM ELEV.

Registered Professional Engineer's Certification
 JAMES G. SCHLENVOGT
 18782
 Engineering Supervisor
 Peabody Western Coal Company
 ARIZONA P.E. 18782
 Date: **DEC 23 2004**

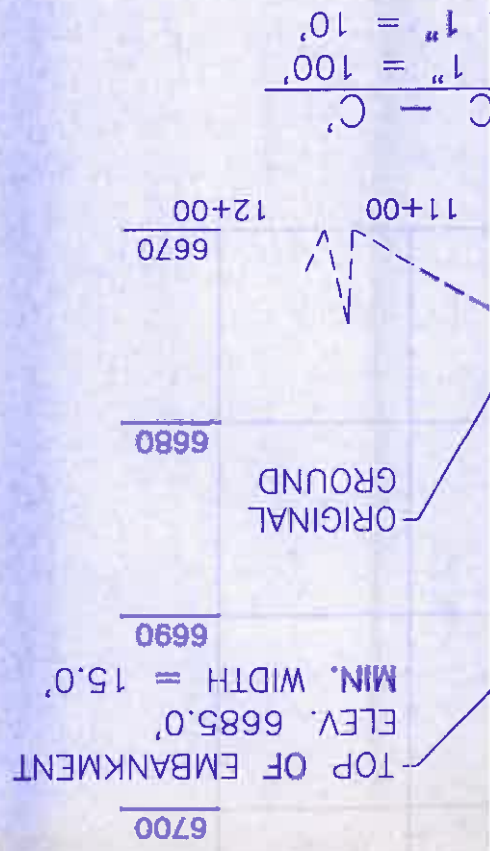
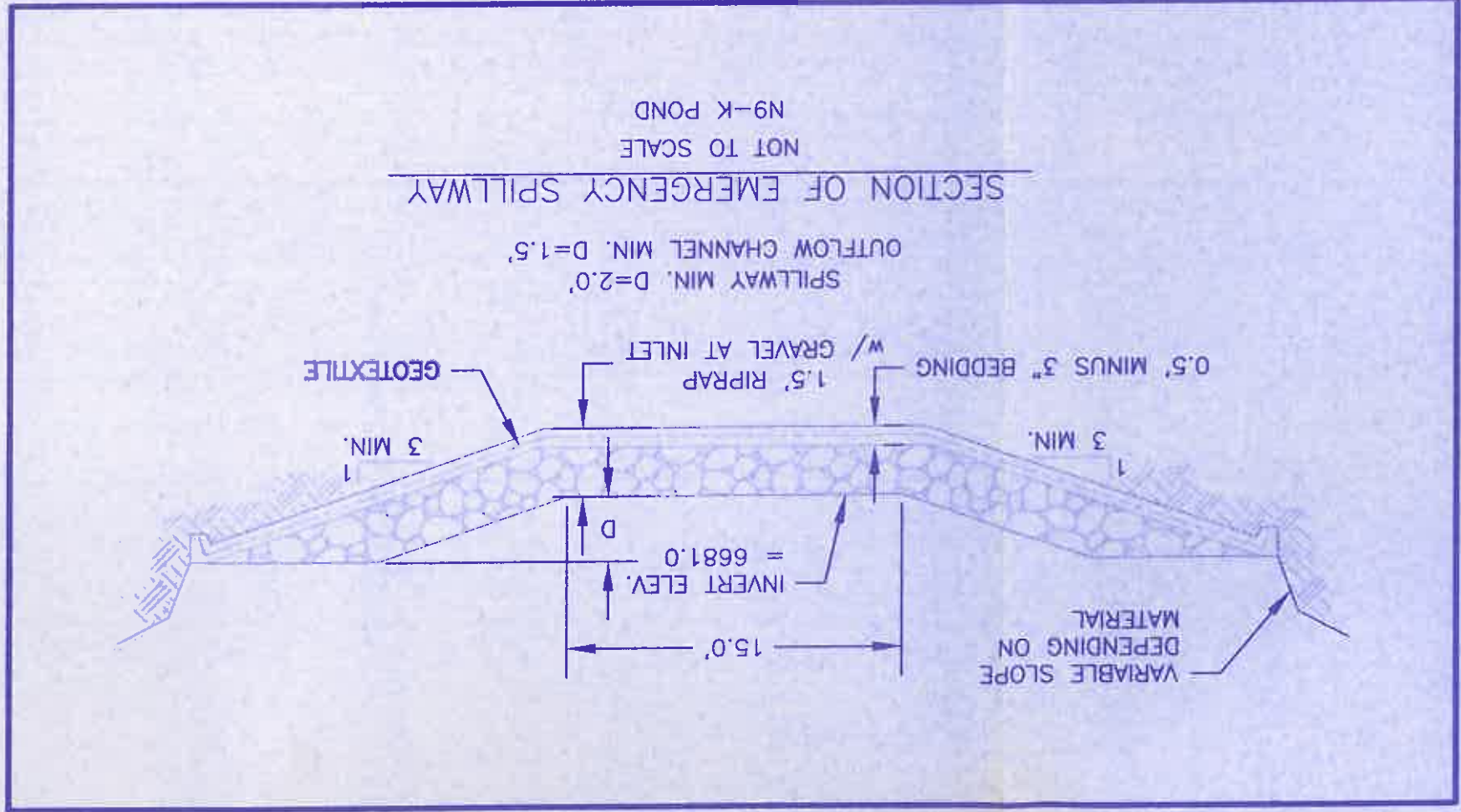
WOODSON
 ENGINEERING AND SURVEYING, INC.
 124 N. ELDEN ST.
 FLAGSTAFF, AZ 86001
 PHONE: (928) 774-4636 FAX: (928) 774-4646

- NOTES:
- 1) General location, see Drawing No. 85400, Sheet K-6 and
 - 2) See Chapter 6, Black Mesa PAP for Construction Specific
 - 3) See Vol. 2, Chapter 6, Attachment D, Sections 1-3 for
 - 4) Salvage topsoil in accordance with approved topsoil salvage
 - 5) Reclamation of the disturbed area above the high water
 - 6) Ponding area side slopes, typical 3:1 slope or flatter as
- accordance with the approved reclamation plan.
 topography.



- NOTES:
- 1) General location, see Drawing No. 85400, Sheet K-6 and Drawing No. 85405.
 - 2) See Chapter 6, Black Mesa PAP for Construction Specifications.
 - 3) See Vol. 2, Chapter 6, Attachment D, Sections 1-3 for description of Geotechnical Evaluation.
 - 4) Salvage topsoil in accordance with approved topsoil salvage plan.
 - 5) Reclamation of the disturbed area above the high waterline shall be in accordance with the approved reclamation plan.
 - 6) Ponding area side slopes, typical 3:1 slope or flatter and blend into natural topography.

EXHIBIT # 1	
PROPOSED N9-K	
SEDIMENTATION POND DESIGN	
KAYENTA MINE	
PEABODY WESTERN COAL COMPANY P. O. BOX 650 KAYENTA, ARIZONA 86033	
DESIGNED BY: GA	SCALE: AS NOTED
DRAWN BY: PEK	DRAWING DATE: 11-22-04
CHECKED BY: JGS	PHOTO DATE: 05-83
CONTOUR INTERVAL: 5 FT.	DWG FILE: POND N9-K.DWG



C