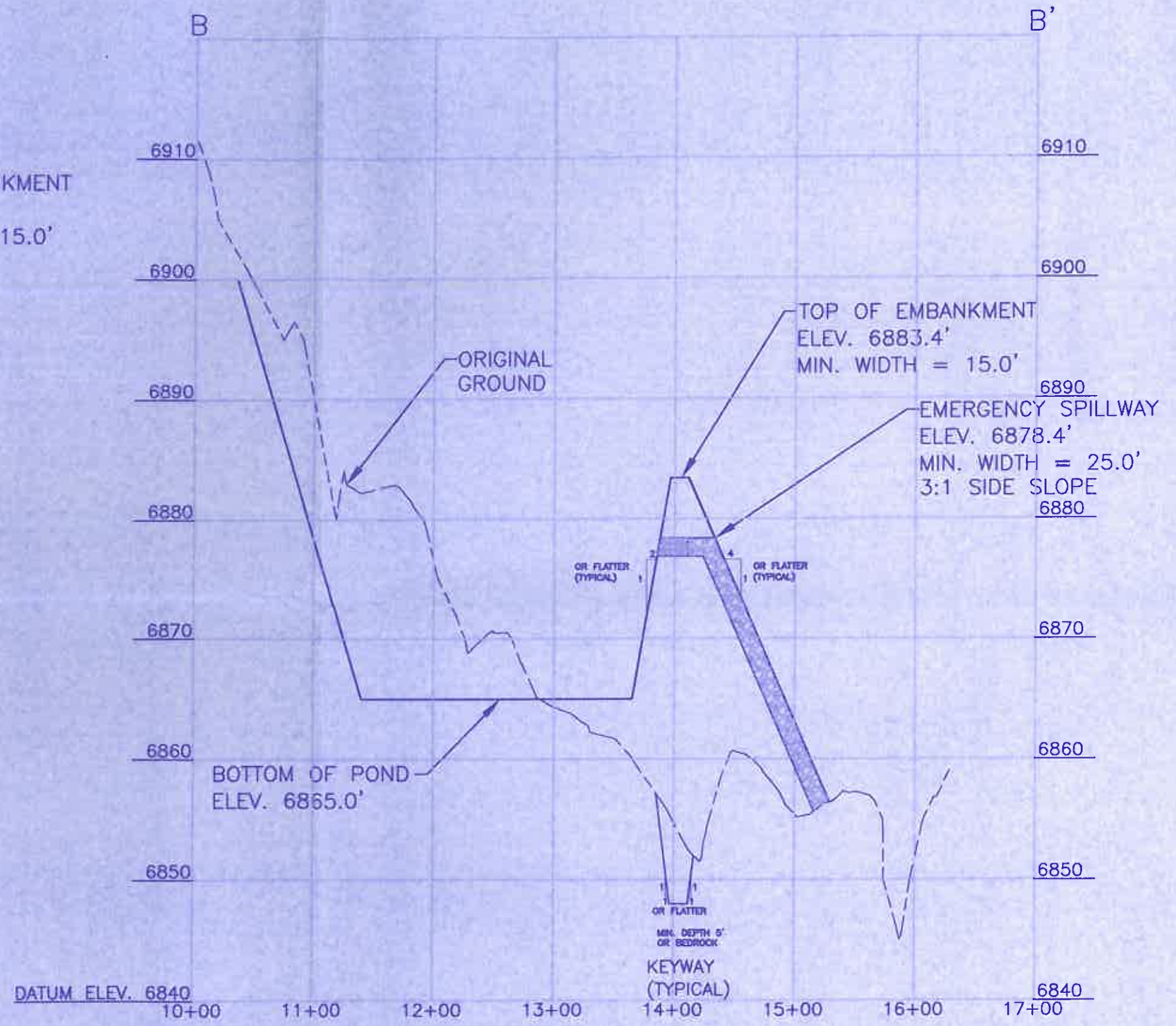
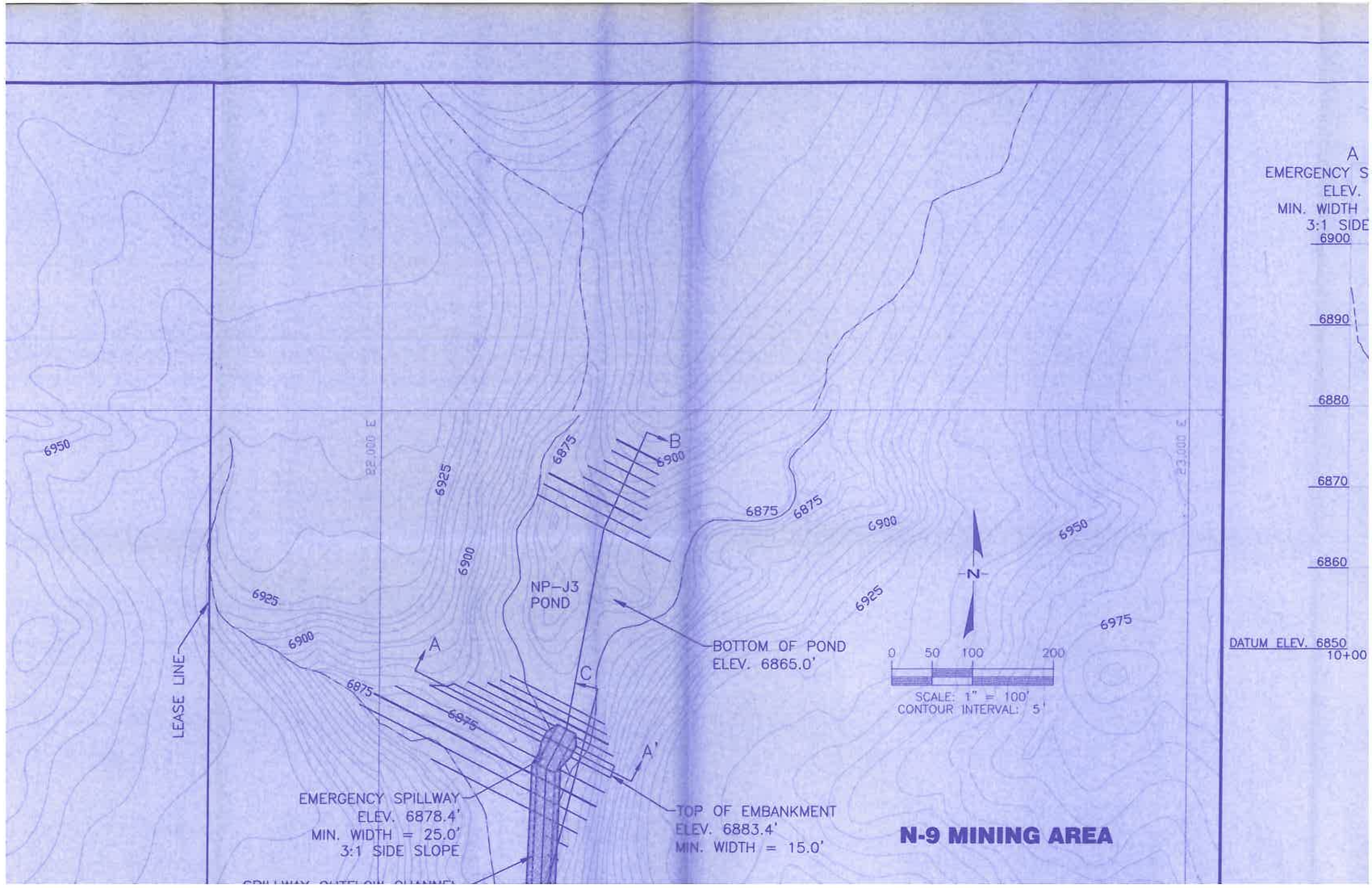


SECTION A - A'
 SCALE: HORIZ. 1" = 100'
 VERT. 1" = 10'



SECTION B - B'
 SCALE: HORIZ. 1" = 100'
 VERT. 1" = 10'



A
EMERGENCY S
ELEV.
MIN. WIDTH
3:1 SIDE
6900

6890

6880

6870

6860

DATUM ELEV. 6850
10+00

LEASE LINE

NP-J3
POND

BOTTOM OF POND
ELEV. 6865.0'

0 50 100 200

SCALE: 1" = 100'
CONTOUR INTERVAL: 5'

EMERGENCY SPILLWAY
ELEV. 6878.4'
MIN. WIDTH = 25.0'
3:1 SIDE SLOPE

TOP OF EMBANKMENT
ELEV. 6883.4'
MIN. WIDTH = 15.0'

N-9 MINING AREA

13,000 N
6975

22,000 E

LEASE LINE

NP-J3
POND

BOTTOM OF POND
ELEV. 6865.0'

EMERGENCY SPILLWAY
ELEV. 6878.4'
MIN. WIDTH = 25.0'
3:1 SIDE SLOPE

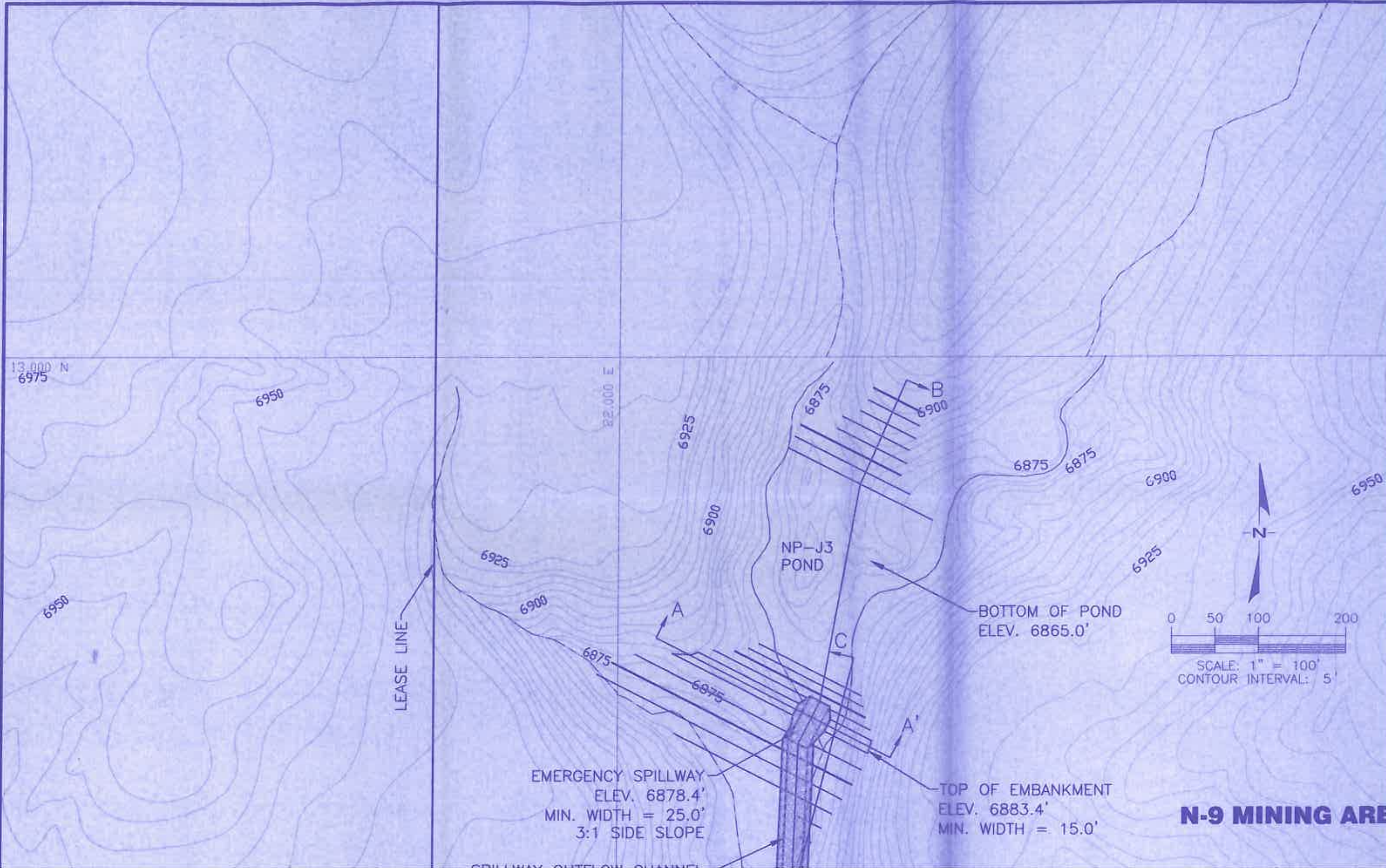
TOP OF EMBANKMENT
ELEV. 6883.4'
MIN. WIDTH = 15.0'

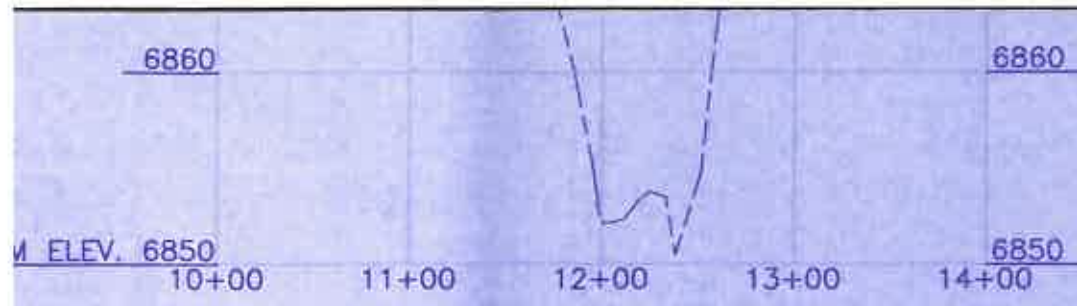


SCALE: 1" = 100'
CONTOUR INTERVAL: 5'

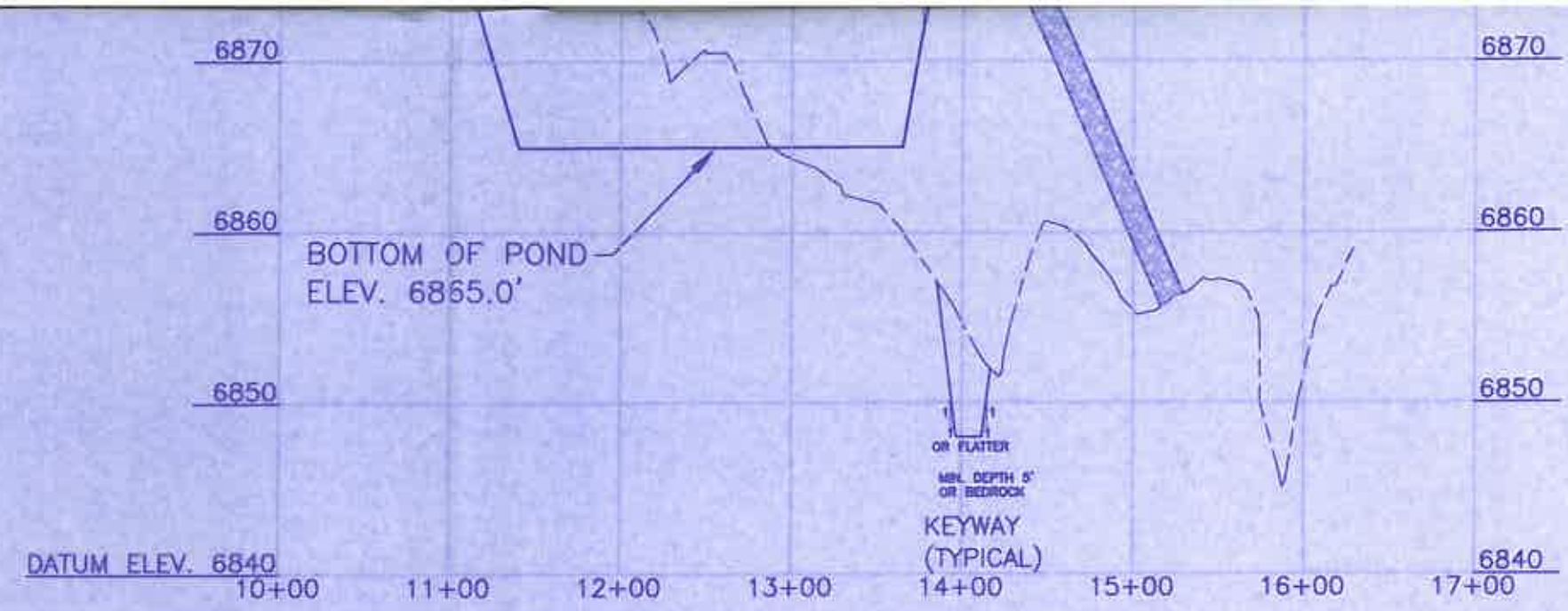


N-9 MINING AREA

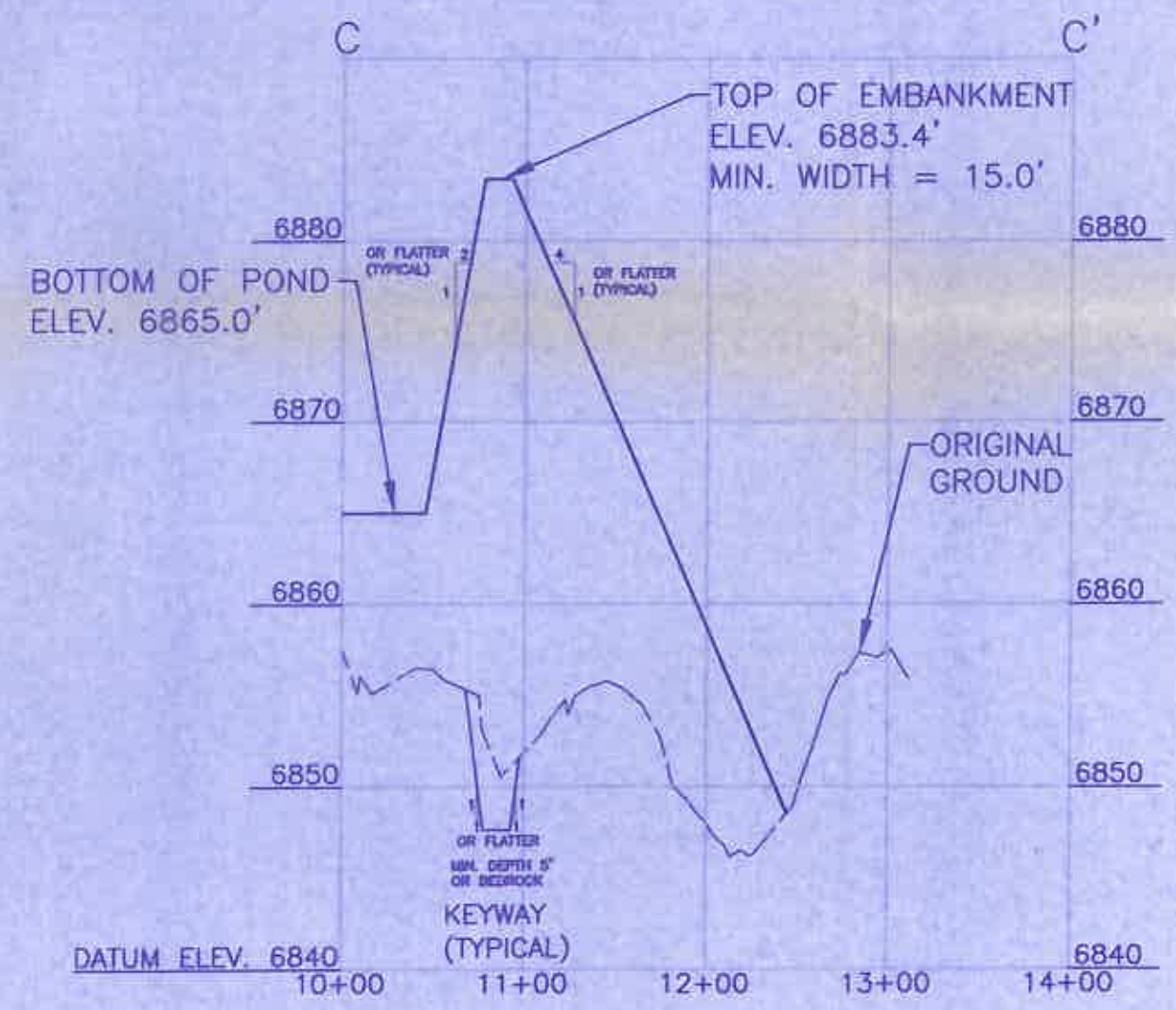




SECTION A - A'
 SCALE: HORIZ. 1" = 100'
 VERT. 1" = 10'

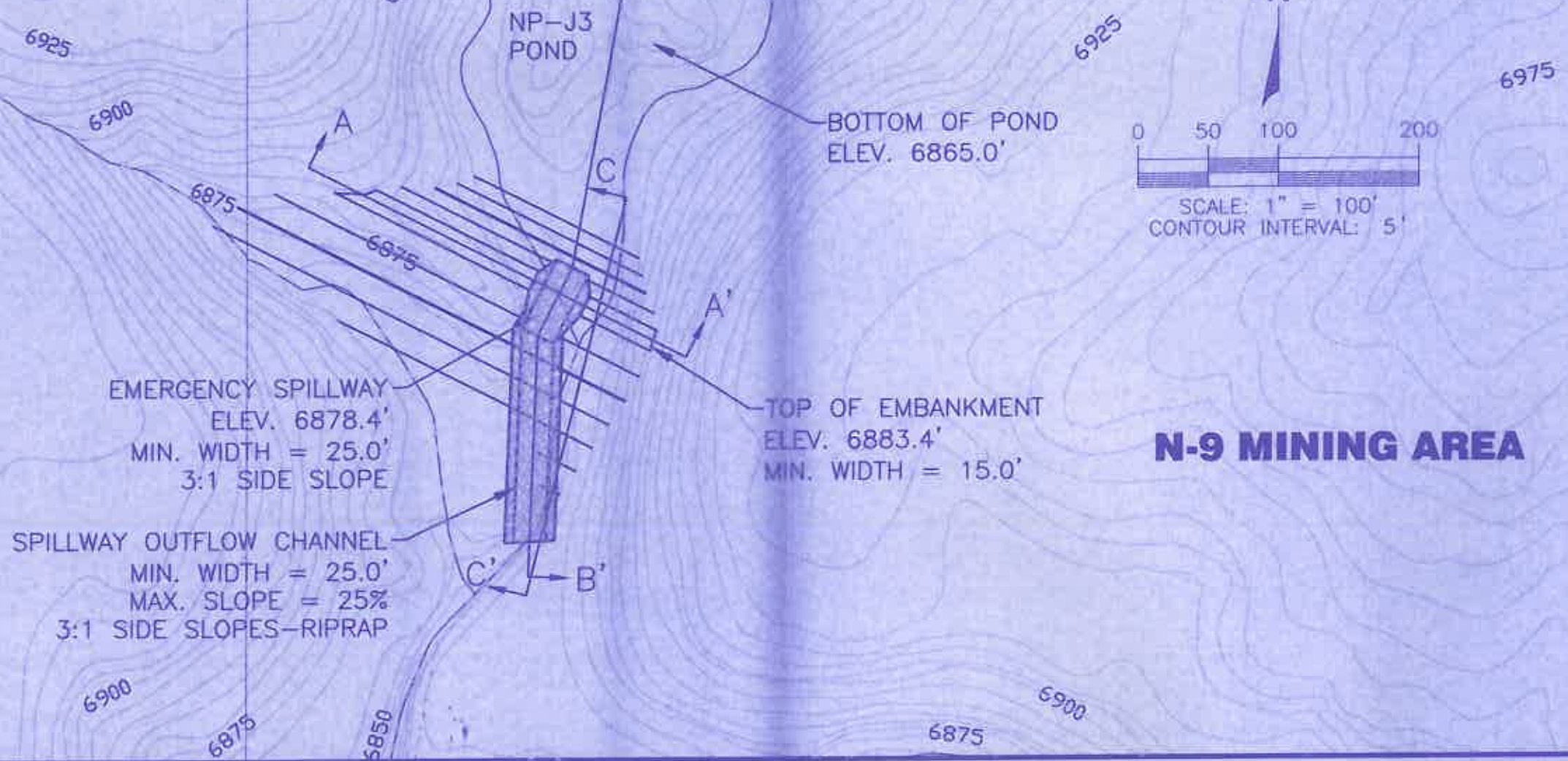


SECTION B - B'
 SCALE: HORIZ. 1" = 100'
 VERT. 1" = 10'

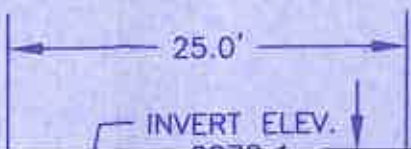


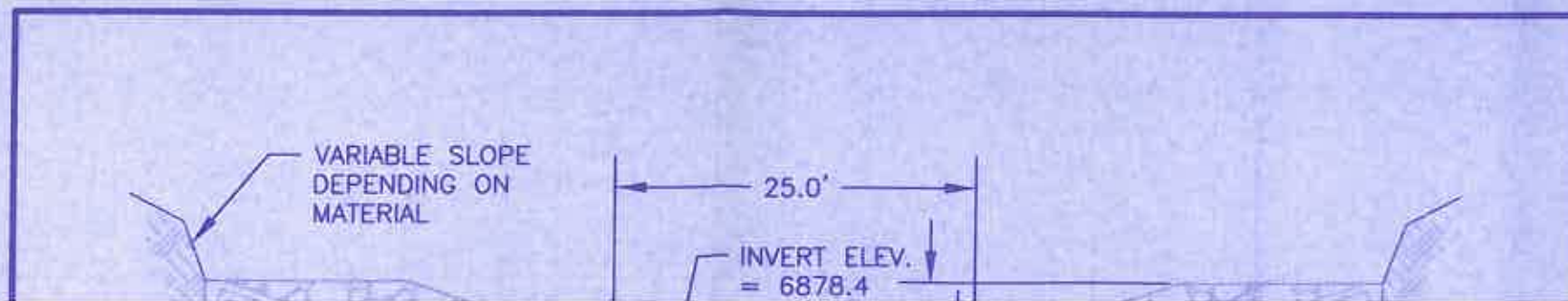
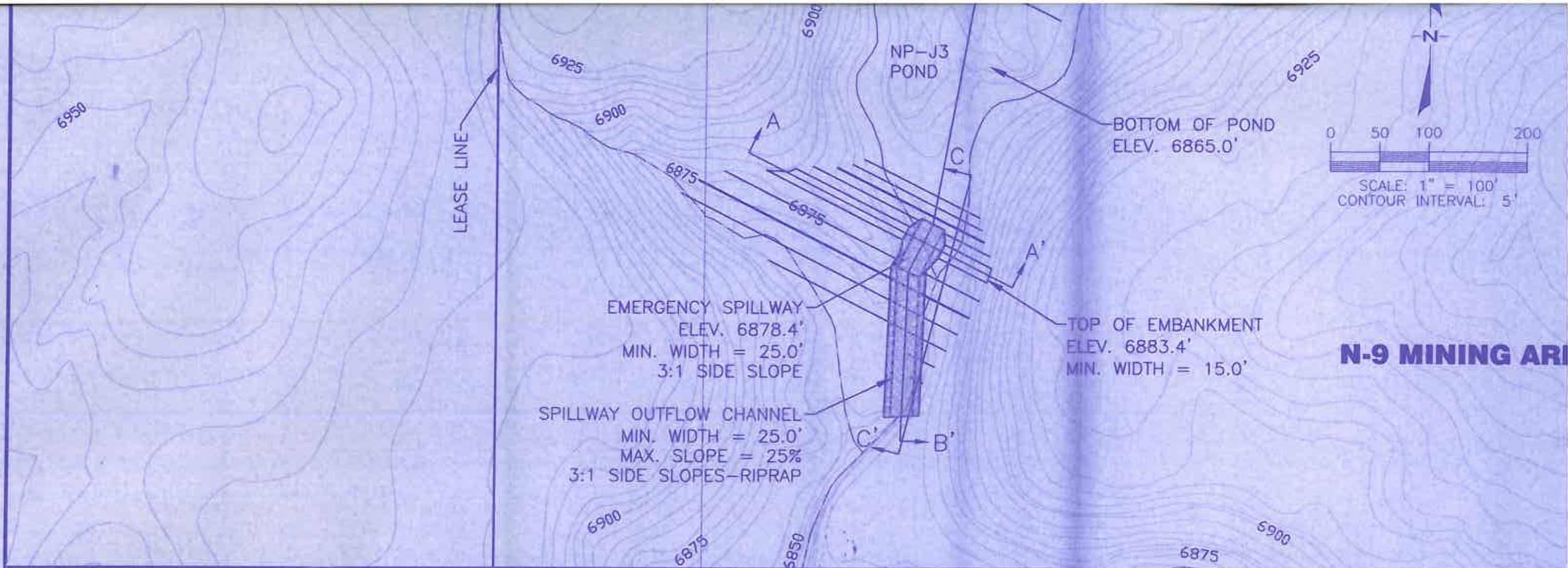
DATUM ELEV. 6850
10+00

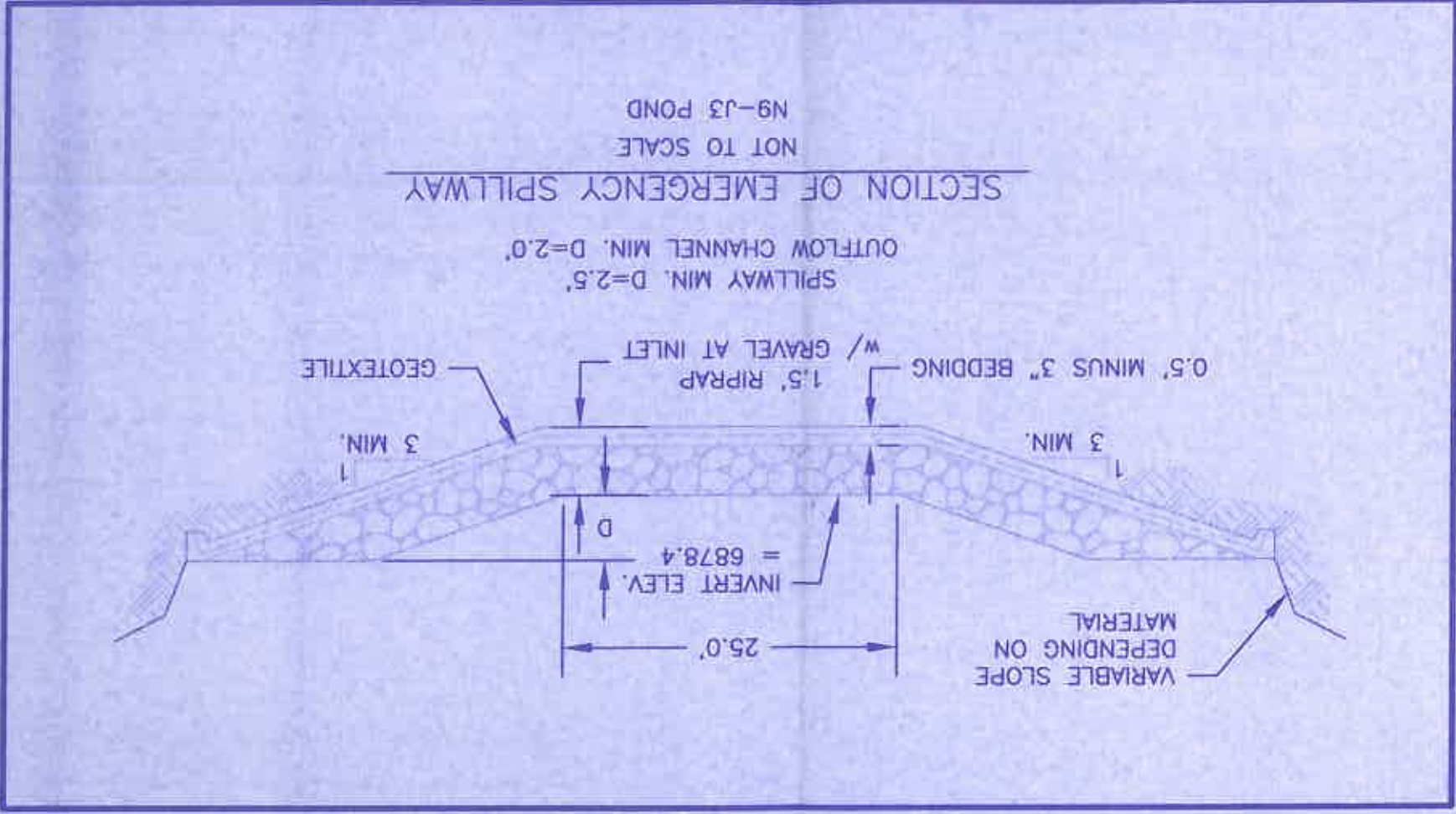
LEASE LINE



VARIABLE SLOPE
DEPENDING ON
MATERIAL







TO	AREA CAPA (ac)	STAGE (ft)	ELEVATION (ft-msl)
0.1	0.96	0.0	6865.0
5.1	1.30	5.0	6870.0
13.1	1.69	10.0	6875.0
19.1	2.09	13.4	6878.4
23.1	2.27	15.0	6880.0
31.1	2.72	18.4	6883.4

N9-J3 POND STAGE

ELEVATION (ft-msl)	STAGE (ft)	AREA (acres)	TOTAL CAPACITY (ac-ft)	DESCRIPTION
6865.0	0.0	0.96	0.00	BOTTOM OF POND
6870.0	5.0	1.30	5.65	INCISED ELEV.
6875.0	10.0	1.69	13.11	
6878.4	13.4	2.09	19.53	EMERGENCY SPILLWAY
6880.0	15.0	2.27	23.02	
6883.4	18.4	2.72	31.51	TOP OF EMBANKMENT

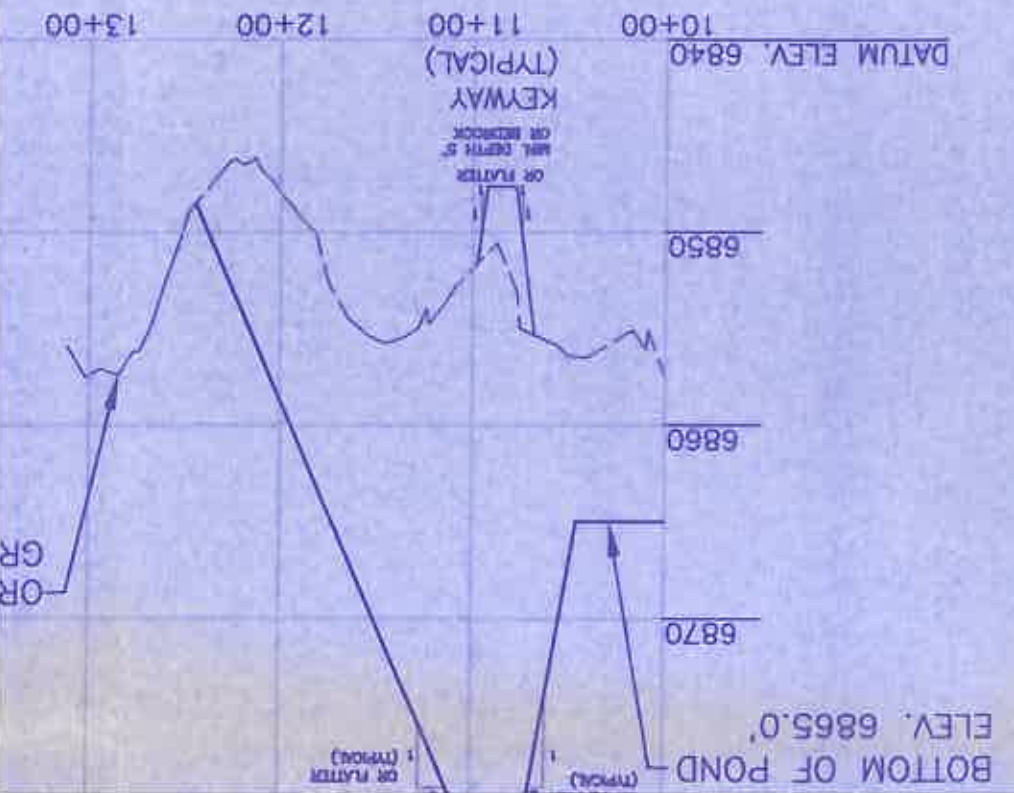
N9-J3 POND STAGE CAPACITY TABLE

WOODSON
 ENGINEERING AND SURVEYING, INC.
 124 N. ELDEN ST.
 FLAGSTAFF, AZ 86001
 PHONE: (928) 774-4538 FAX: (928) 774-4545

NOTES:

- 1) General location, see Drawing No. 85400, Sheet K-6 and
 - 2) See Chapter 6, Black Mesa PAP for Construction Spec
 - 3) See Vol. 2, Chapter 6, Attachment D, Sections 1-3 for Geotechnical Evaluation.
 - 4) Salvage topsoil in accordance with approved topsoil se
 - 5) Reclamation of the disturbed area above the high wat
 - 6) accordance with the approved reclamation plan.
 - 6) Ponding area side slopes, typical 3:1 slope or flatter
- topography.

SECTION C - C'
 SCALE: HORIZ. 1" = 100'
 VERT. 1" = 10'



WOODSON
 ENGINEERING AND SURVEYING, INC.
 124 N. ELDEN ST.
 FLAGSTAFF, AZ 86001
 PHONE: (928) 774-4636 FAX: (928) 774-4046

EXHIBIT # 1	
PROPOSED N9-J3	
SEDIMENTATION POND DESIGN	
KAYENTA MINE	
PEABODY WESTERN COAL COMPANY P. O. BOX 650 KAYENTA, ARIZONA 86033	
DESIGNED BY: GA	SCALE: AS NOTED
DRAWN BY: PEK	DRAWING DATE: 11-22-04
CHECKED BY: JGS	PHOTO DATE: 05-83
CONTOUR INTERVAL: 5 FT.	DWG FILE: POND N9-J3.DWG

- NOTES:
- 1) General location, see Drawing No. 85400, Sheet K-6 and Drawing No. 85405.
 - 2) See Chapter 6, Black Mesa PAP for Construction Specifications.
 - 3) See Vol. 2, Chapter 6, Attachment D, Sections 1-3 for description of Geotechnical Evaluation.
 - 4) Salvage topsoil in accordance with approved topsoil salvage plan.
 - 5) Reclamation of the disturbed area above the high waterline shall be in accordance with the approved reclamation plan.
 - 6) Ponding area side slopes, typical 3:1 slope or flatter and blend into natural topography.

ION
POND
LEV.
PILLWAY
INCKMENT

ENGINEER'S CERTIFICATION
 JAMES SCHLENNVGT
 Engineering Supervisor
 Peabody Western Coal Company
 ARIZONA P.E. 18782
 Date: **DEC 23 2004**

