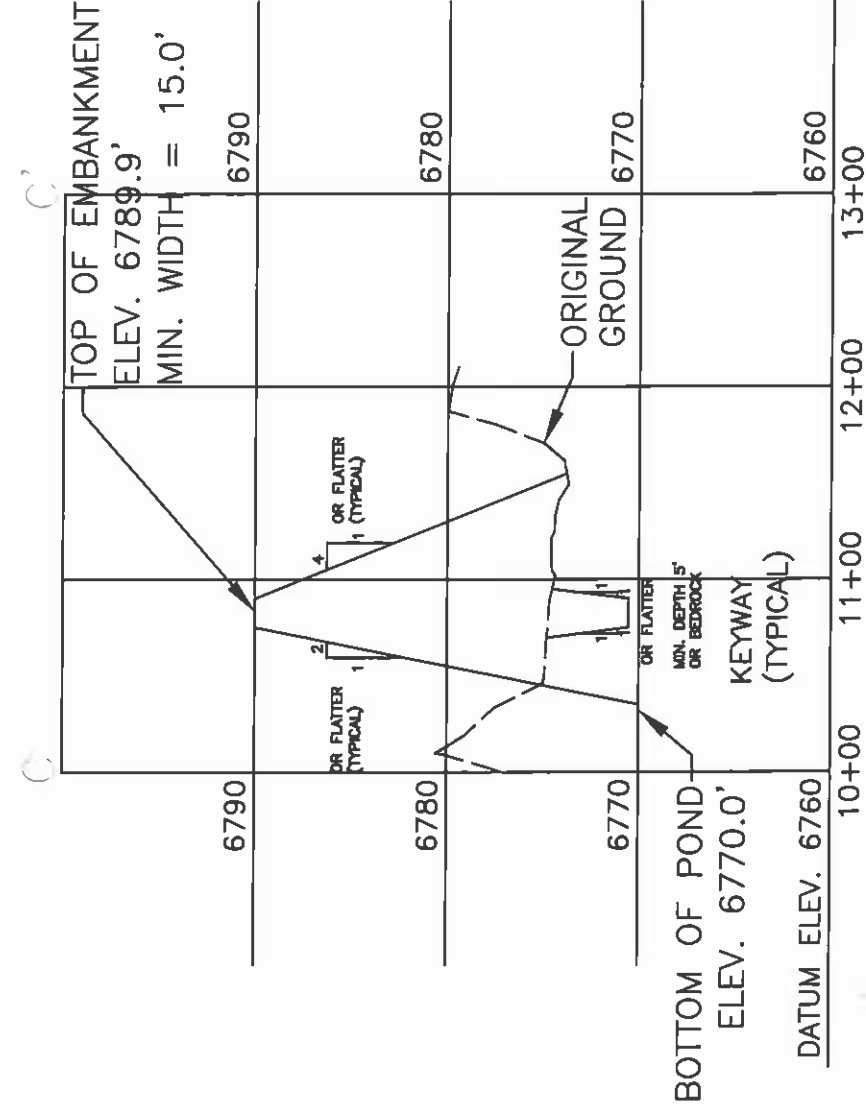




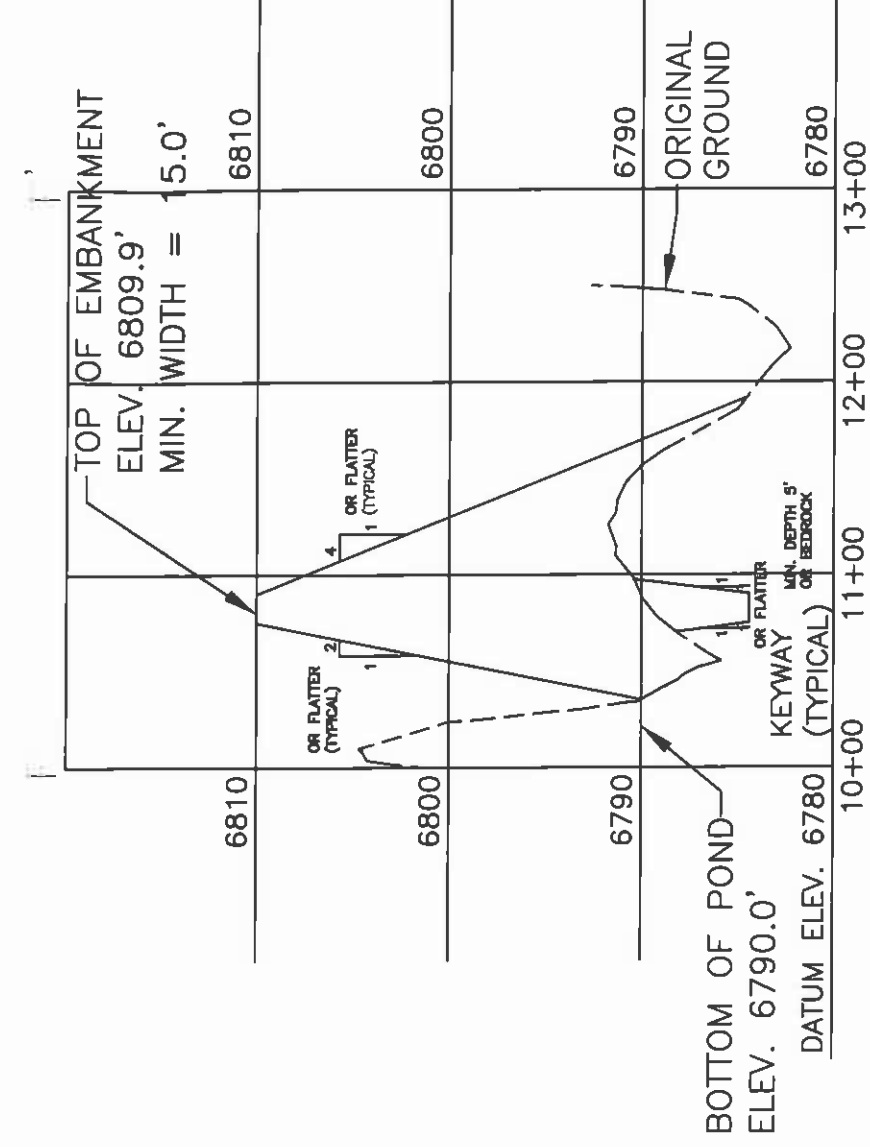


B'	TOP OF EMBANKMENT ELEV. 6789.9' MIN. WIDTH = 15.0'	6790
	EMERGENCY SPILLWAY ELEV. 6785.5' MIN. WIDTH = 40.0' SIDE SLOPE 3:1	6780
		6770
		6760
		16+00



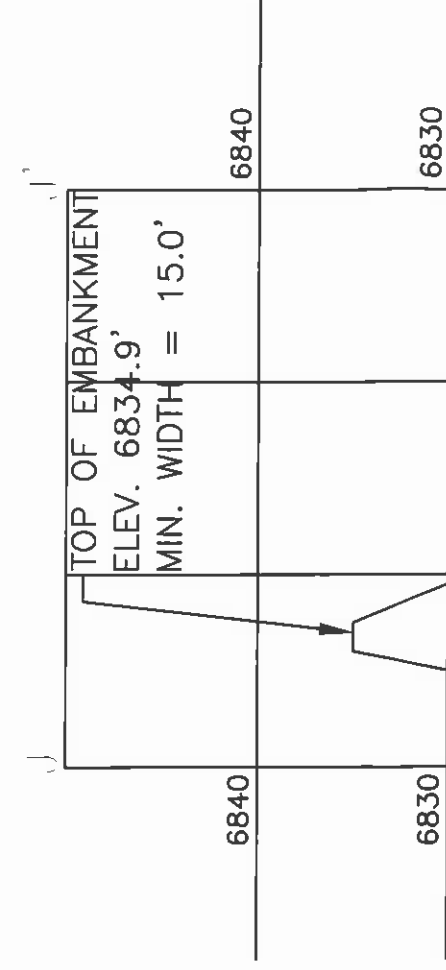
SECTION C-C  
SCALE: HORIZ. 1" = 100'  
VERT. 1" = 10'

E'	TOP OF EMBANKMENT ELEV. 6807.1' MIN. WIDTH = 47.0' SIDE SLOPE 3:1	6810
	EMERGENCY SPILLWAY ELEV. 6807.1' MIN. WIDTH = 47.0' SIDE SLOPE 3:1	6800
		6790
		6780
		16+00



SECTION E-E  
SCALE: HORIZ. 1" = 100'  
VERT. 1" = 10'

H'	TOP OF EMBANKMENT ELEV. 6834.9' MIN. WIDTH = 15.0'	6840
	EMERGENCY SPILLWAY ELEV. 6831.6' MIN. WIDTH = 42.0' 3:1 SIDE SLOPE	6830

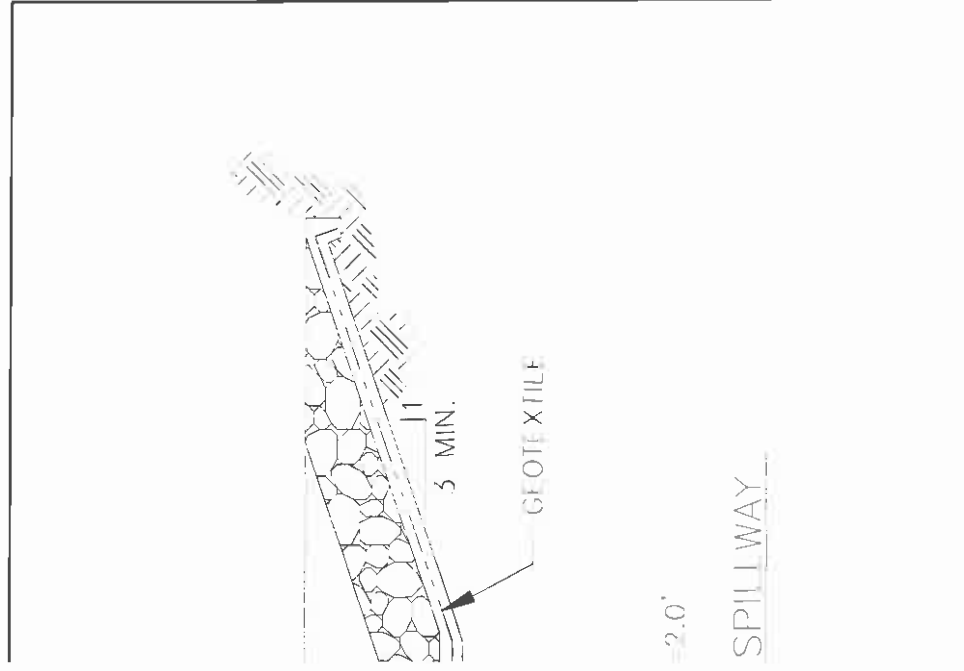


6785.0	15.0	1.82	18.75	
6785.5	15.5	1.87	19.66	EMERGENCY SPILLWAY
6789.9	19.9	2.31	29.06	TOP OF EMBANKMENT

680  
680  
680

N9-J2 POND STAGE CAPACITY TABLE

ELEVATION (ft - msl)	STAGE (ft)	AREA (acres)	TOTAL CAPACITY (ac-ft)	DESCRIPTION
6815.0	0.0	0.59	0.00	BOTTOM OF
6820.0	5.0	0.86	5.65	INCISED E
6825.0	10.0	1.20	8.77	
6830.0	15.0	1.85	16.54	
6831.6	16.6	2.14	19.52	EMERGENCY SP
6834.9	19.9	2.79	27.89	TOP OF EMBANK



SPILLWAY

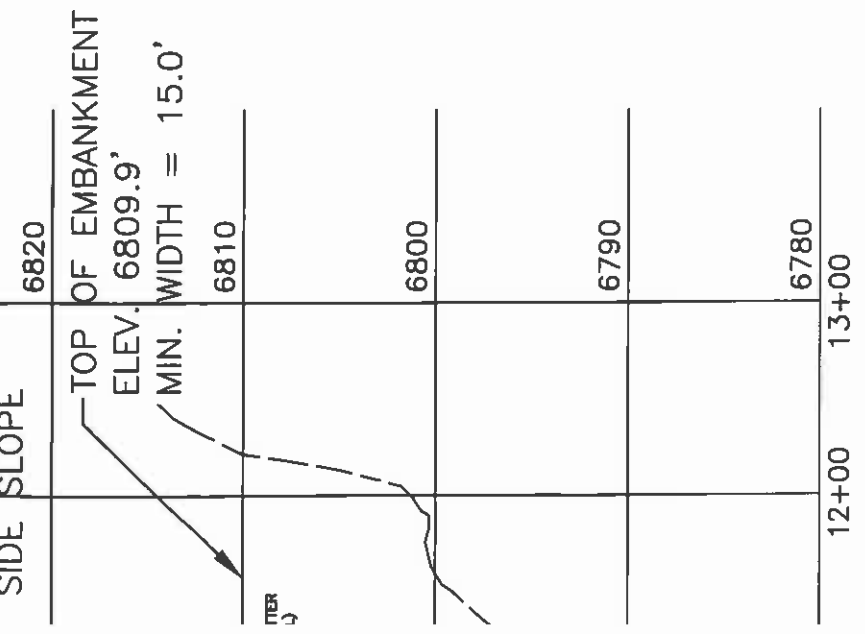
En Pe

NOTES:

- 1) General location, see
- 2) See Chapter 6, Black
- 3) See Vol. 2, Chapter 6  
Geotechnical Evaluatio
- 4) Salvage topsoil in acc
- 5) Reclamation of the dis  
accordance with the
- 6) Ponding area side slop  
topography.

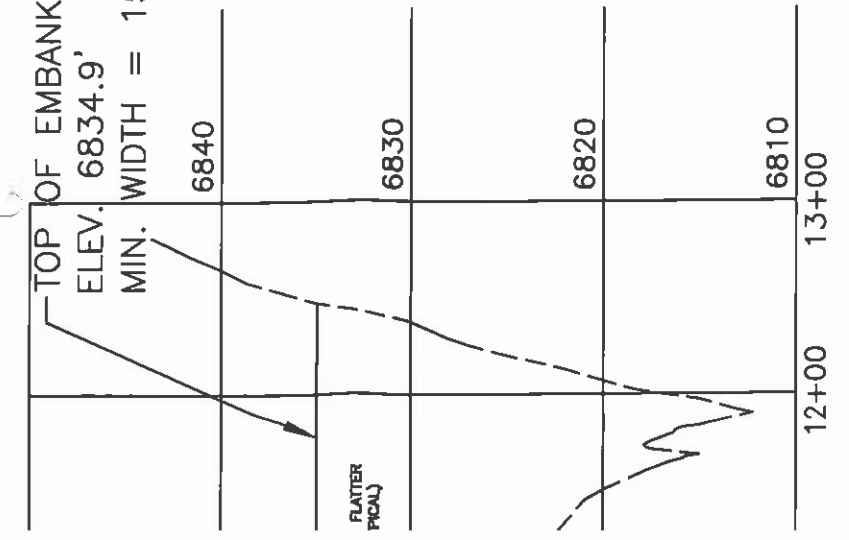
**WOODSON**  
ENGINEERING AND SURVEYING, INC.  
124 N. ELDEN ST.  
FLAGSTAFF, AZ 86001  
PHONE: (928) 774-4636 FAX: (928) 774-4646

EMERGENCY SPILLWAY  
 ELEV. 6807.1'  
 MIN. WIDTH = 47.0'  
 SIDE SLOPE

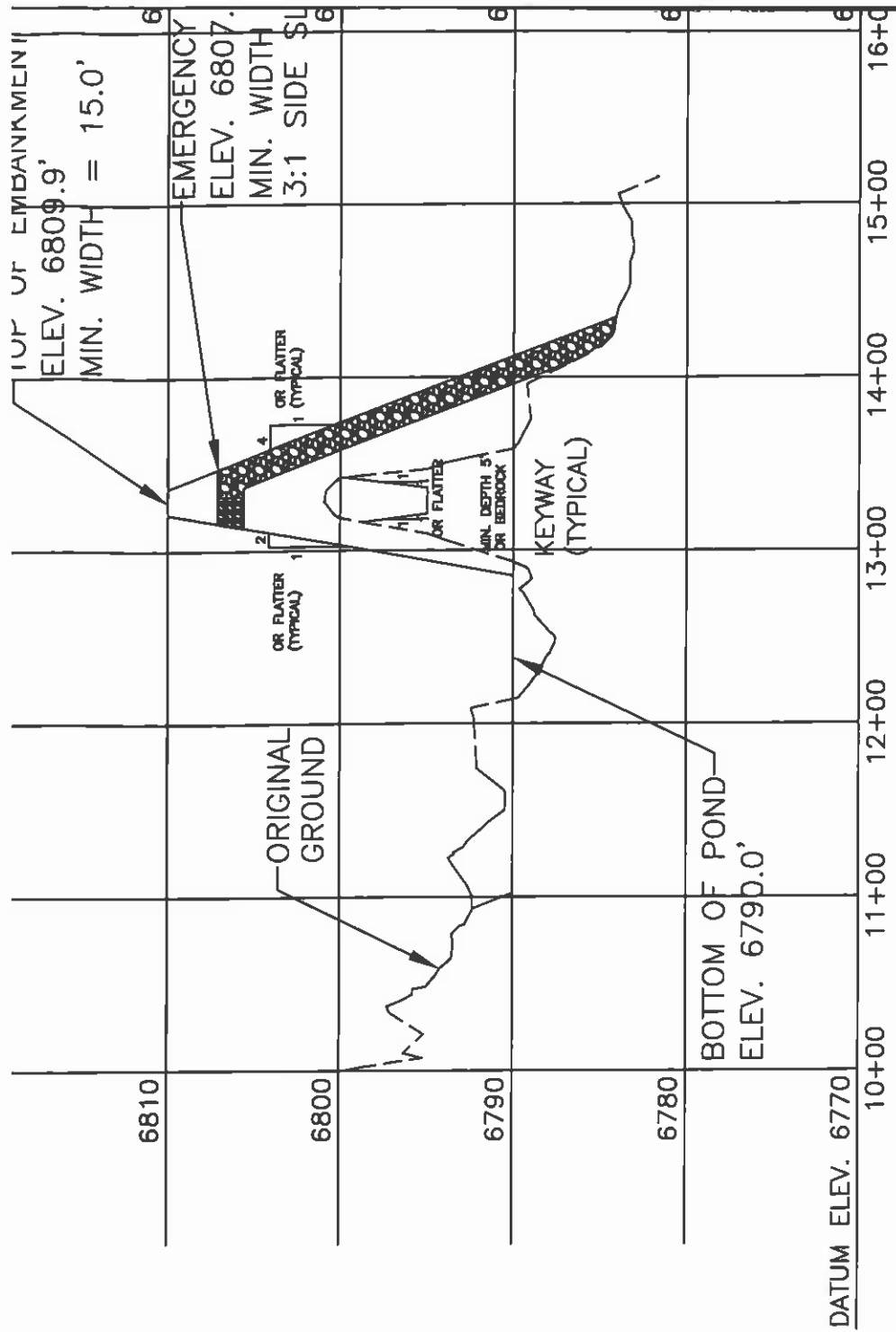


SECTION D - D'  
 SCALE: HORIZ. 1" = 100'  
 VERT. 1" = 10'

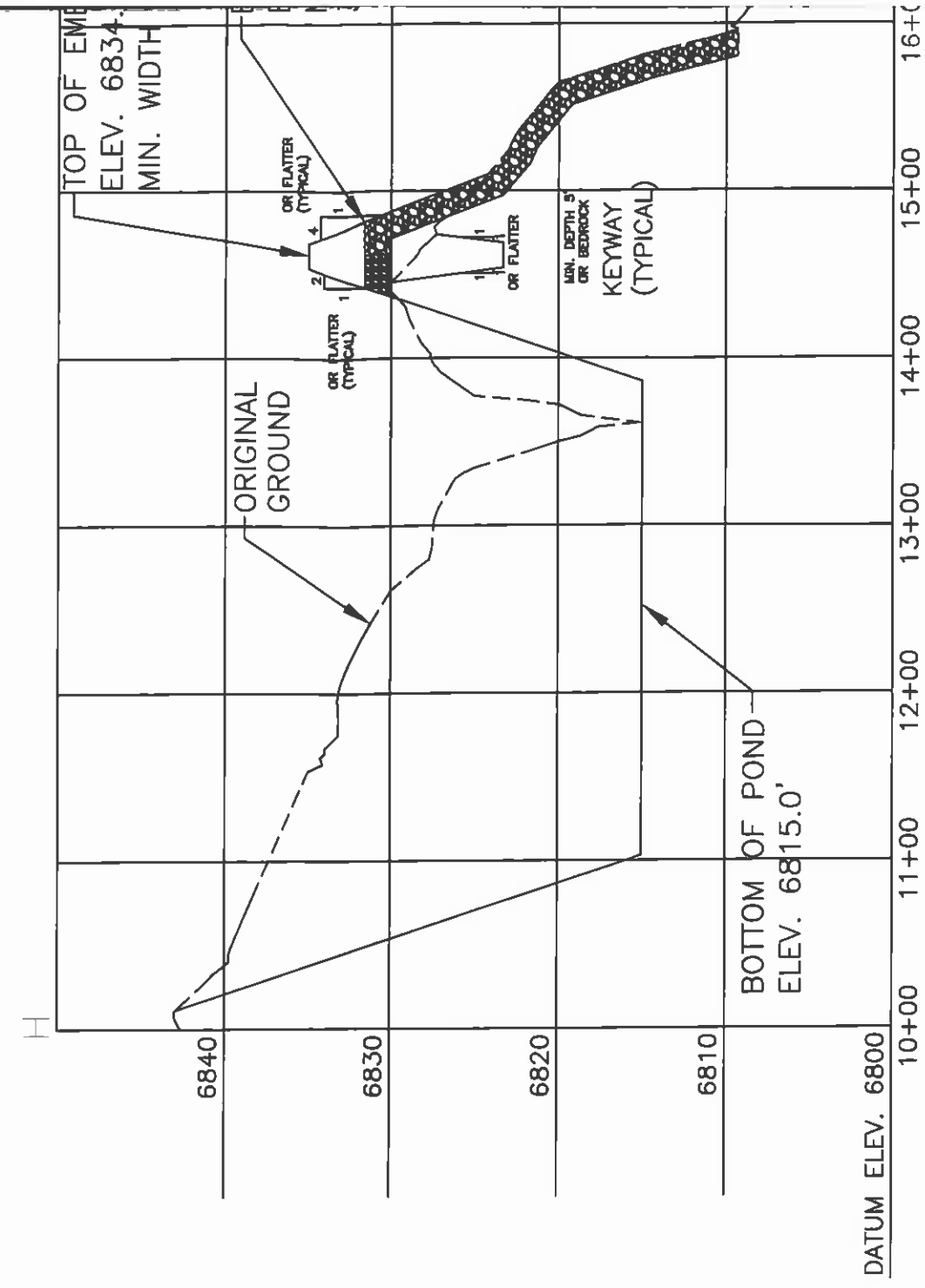
SECTION G-G'  
 TOP OF EMBANKMENT  
 ELEV. 6834.9'  
 MIN. WIDTH = 15.0'



SECTION G - G'  
 SCALE: HORIZ. 1" = 100'  
 VERT. 1" = 10'



SECTION E - E'  
 SCALE: HORIZ. 1" = 100'  
 VERT. 1" = 10'

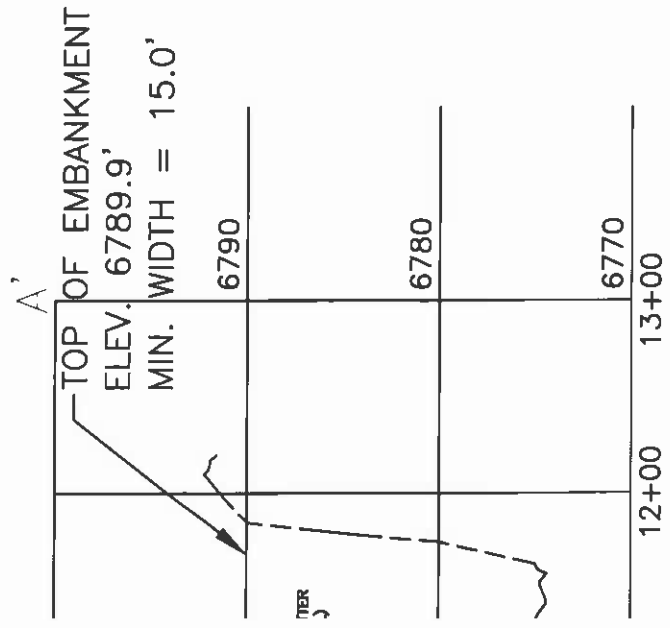


SECTION H - H'  
 SCALE: HORIZ. 1" = 100'  
 VERT. 1" = 10'

N9-J POND STAGE CAPACITY TABLE

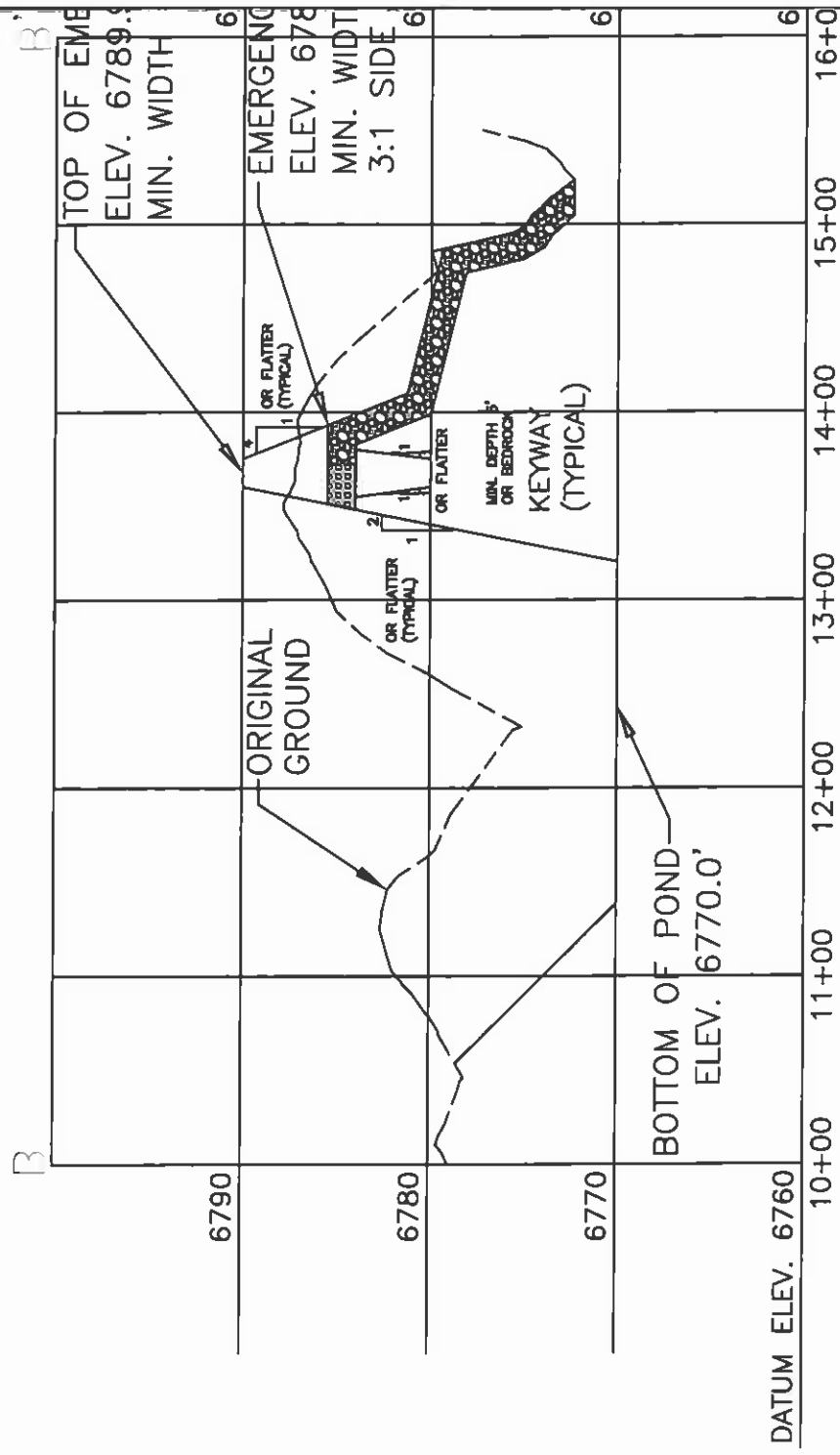
ELEVATION (ft-msl)	STAGE (ft)	AREA (acres)	TOTAL CAPACITY (ac-ft)	DESCRIPTION
6770.0	0.0	0.77	0.00	BOTTOM OF POND
6775.0	5.0	1.05	4.55	INCISED F.L.V.
6780.0	10.0	1.40	10.67	
6785.0	15.0	1.82	18.73	

ELEV (ft)	675	675	680	680



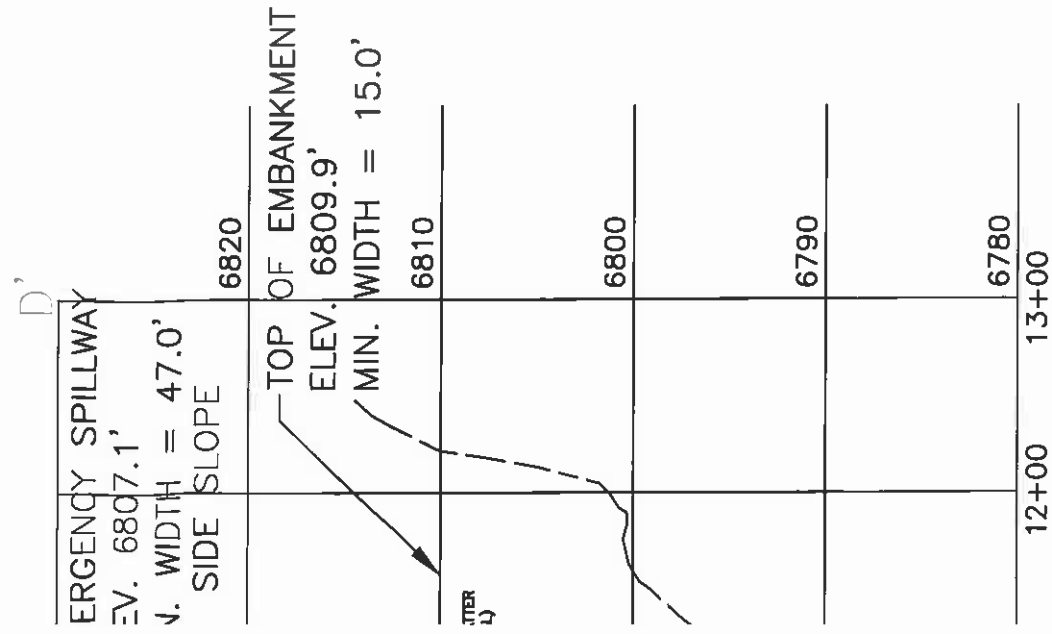
↓ A — A'

HORIZ. 1" = 100'  
VERT. 1" = 10'



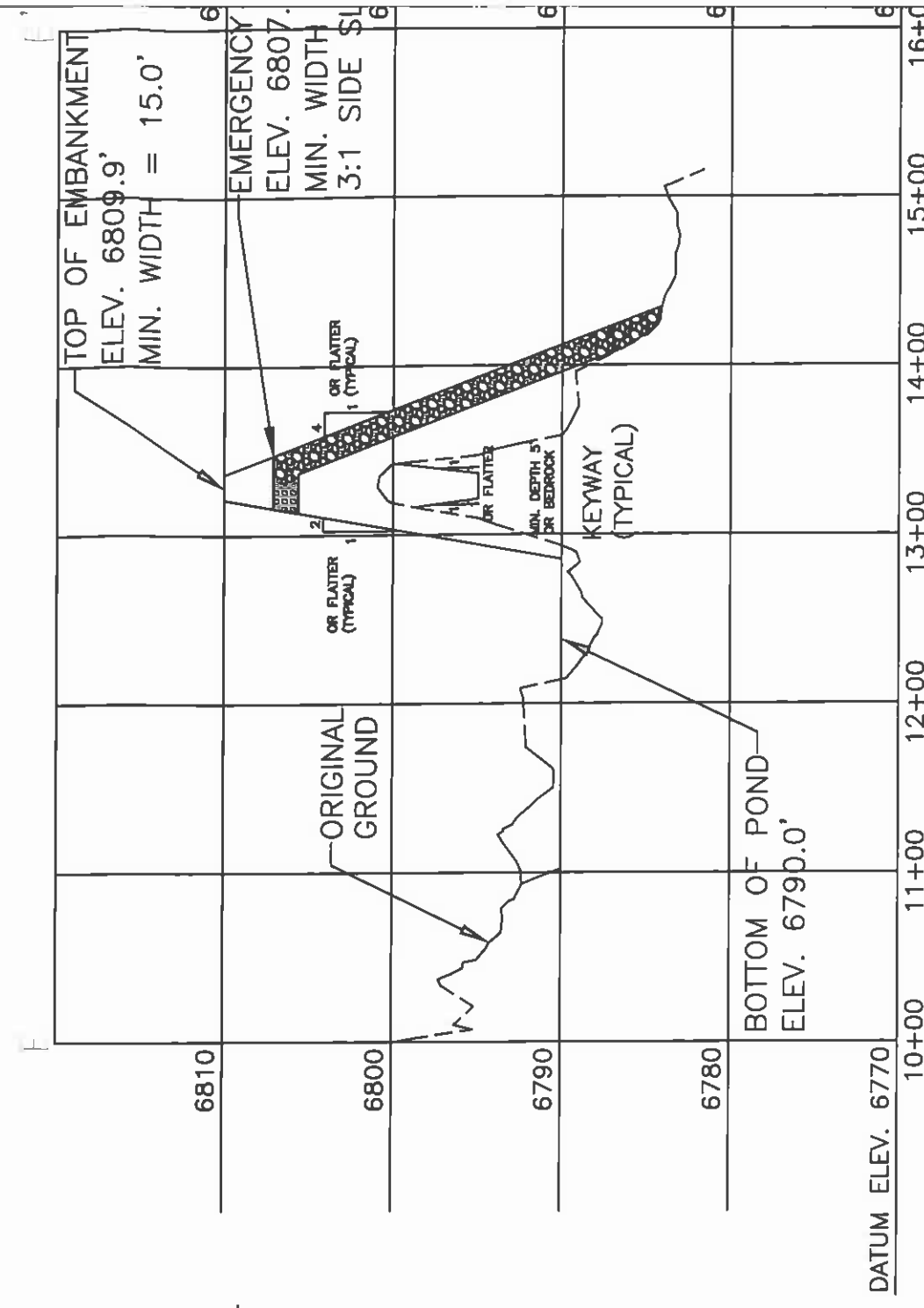
SECTION B — B'

SCALE: HORIZ. 1" = 100'  
VERT. 1" = 10'



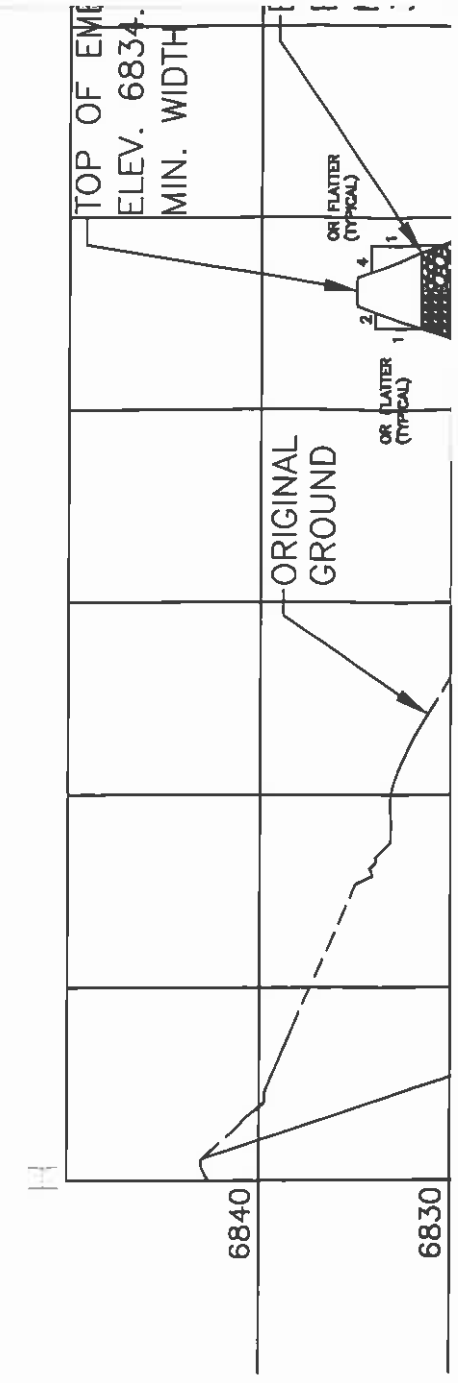
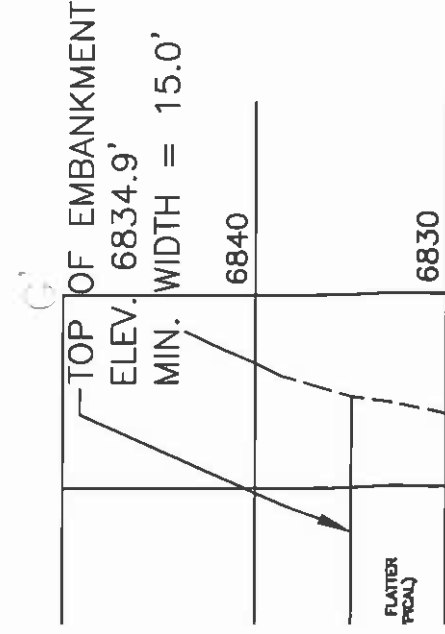
↓ D — D'

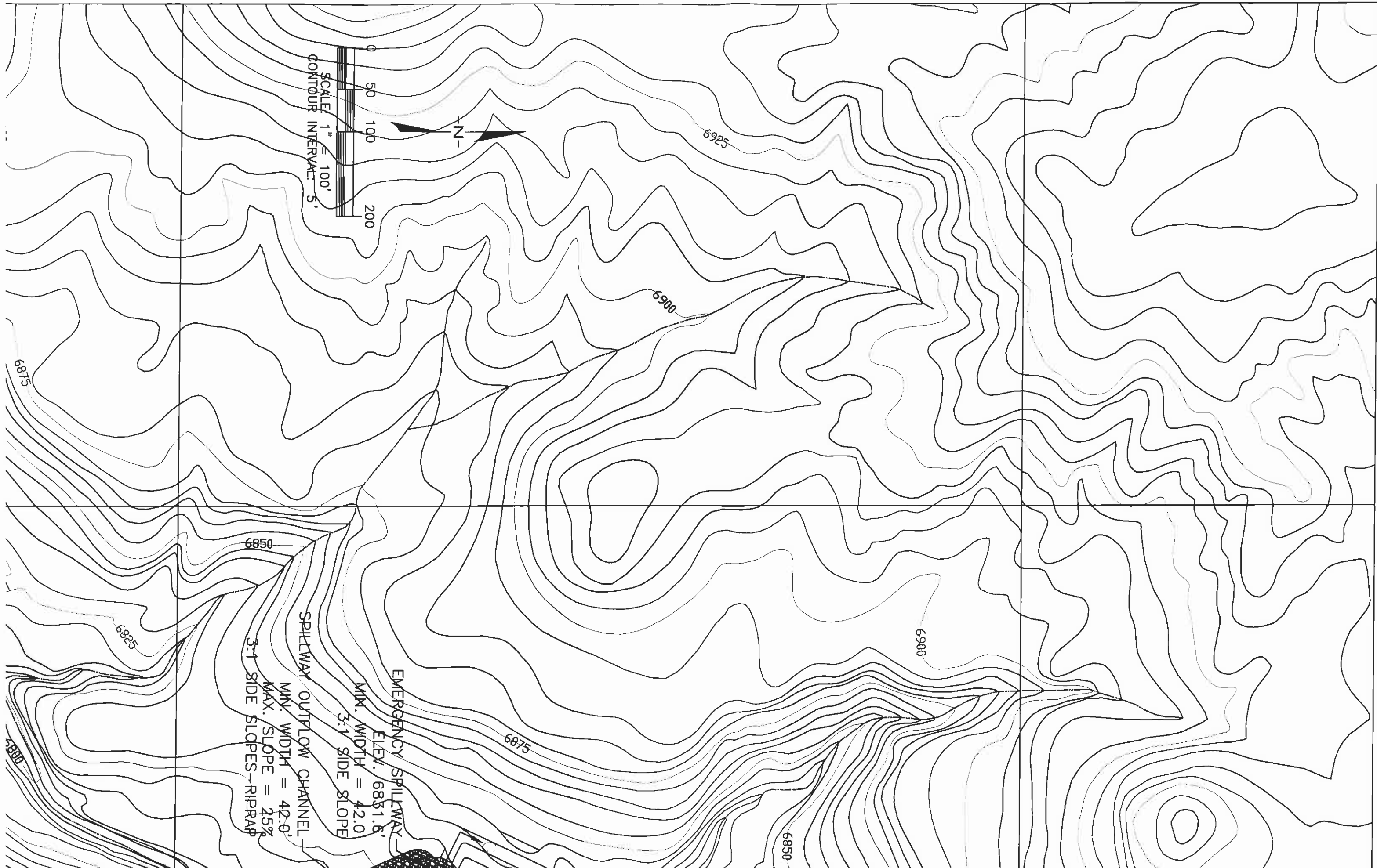
HORIZ. 1" = 100'  
VERT. 1" = 10'



SECTION E — E'

SCALE: HORIZ. 1" = 100'  
VERT. 1" = 10'





SCALE 1" = 100'  
CONTOUR INTERVAL 5'

EMERGENCY SPILLWAY  
ELEV. 6851.6'  
MIN. WIDTH = 42.0'  
3:1 SIDE SLOPE

SPILLWAY OUTFLOW CHANNEL  
MIN. WIDTH = 42.0'  
MAX. SLOPE = 25%  
3:1 SIDE SLOPES - RIPRAP

6815

6825

6850

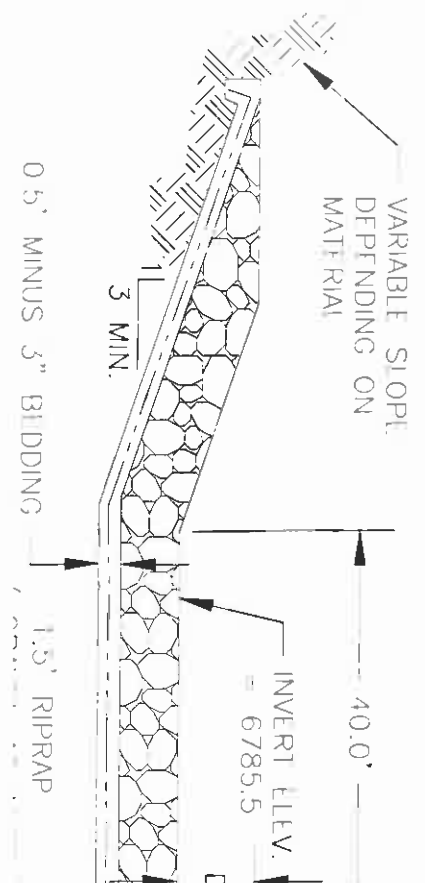
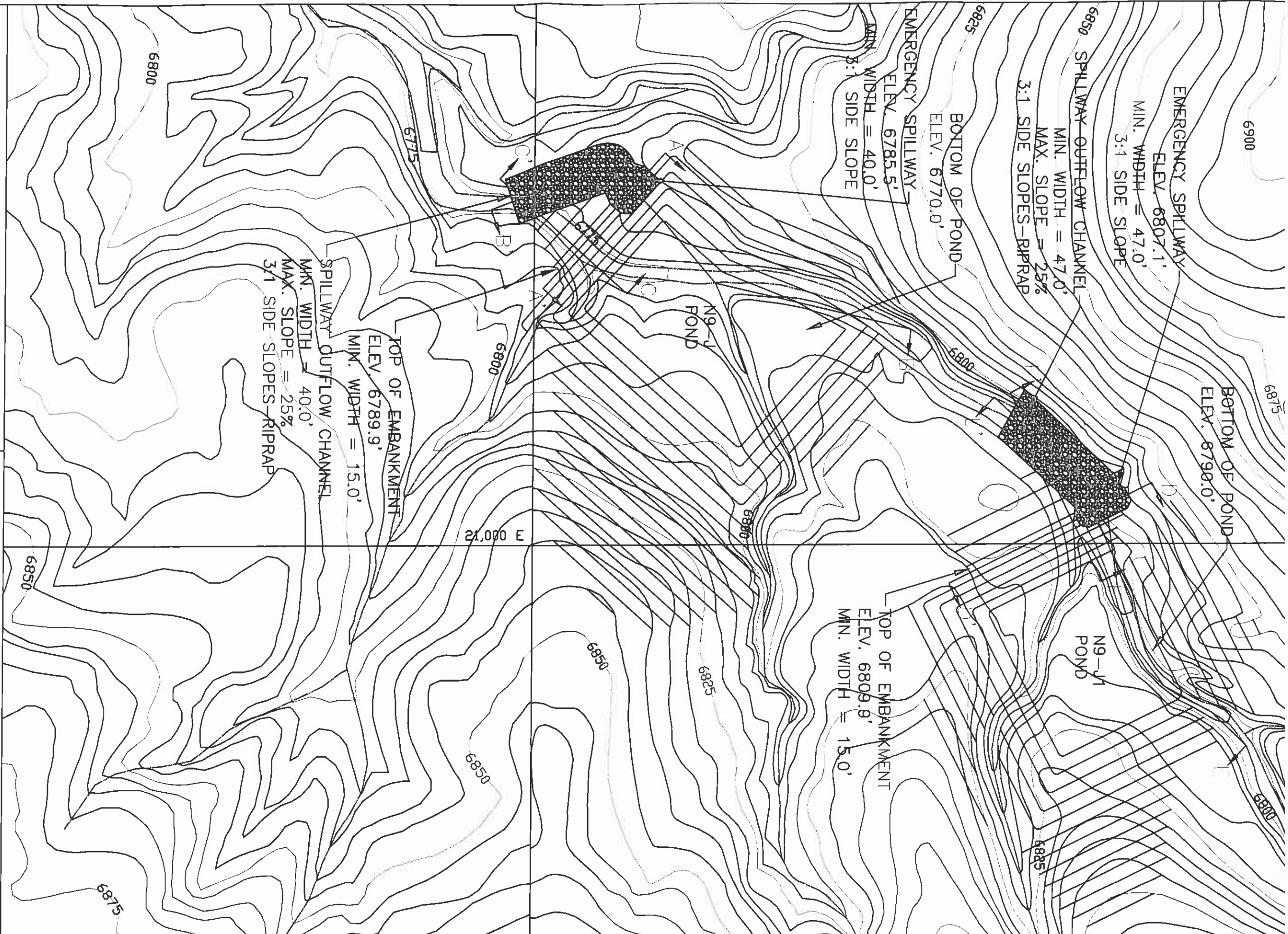
6875

6900

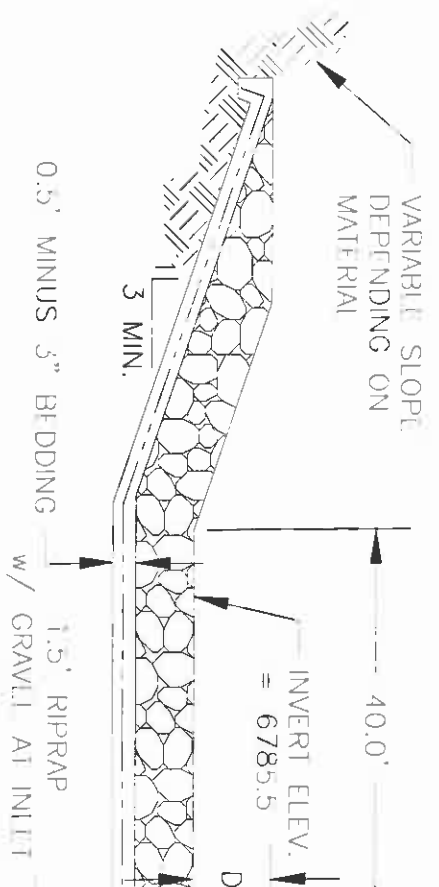
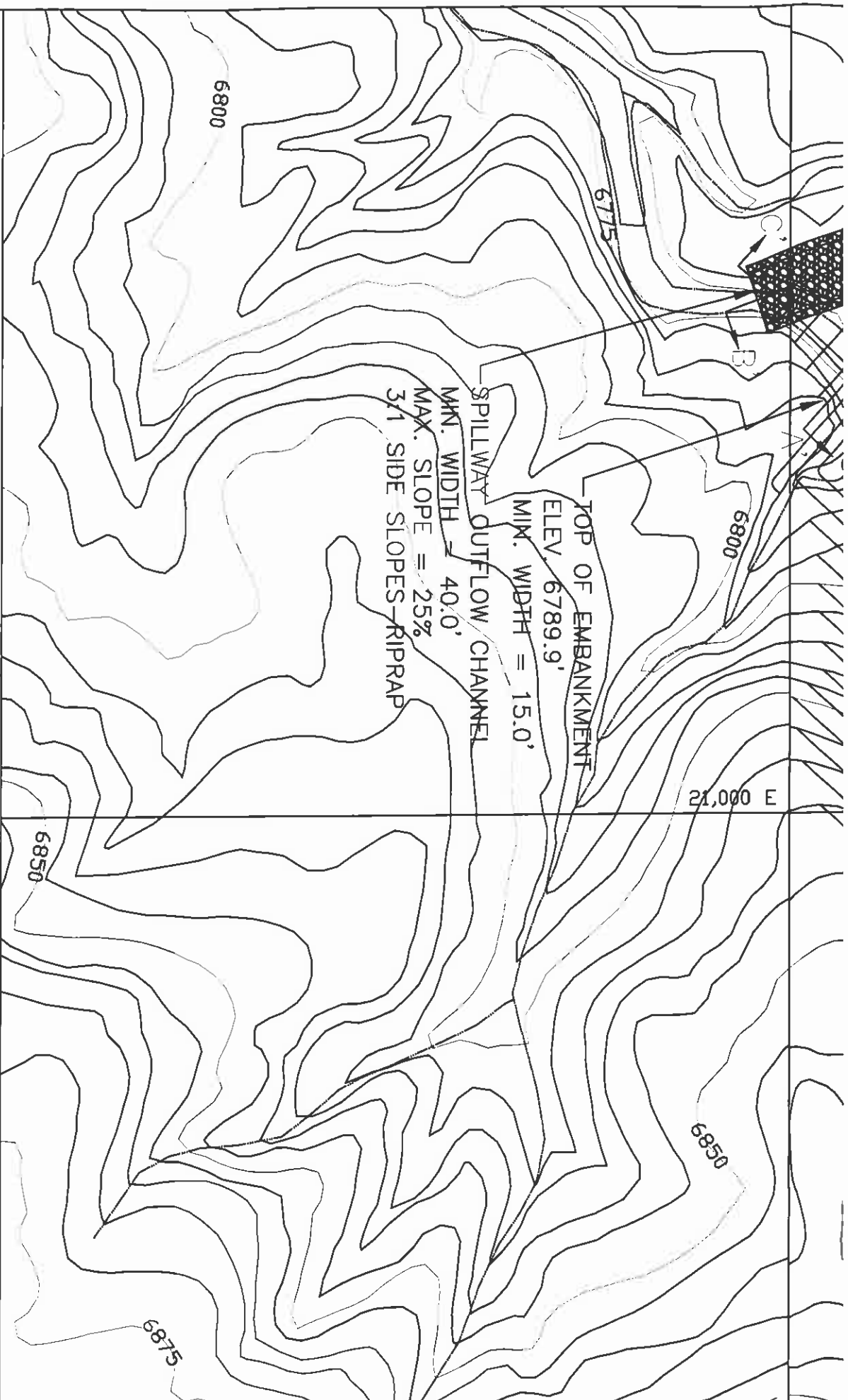
6925

6900

6850







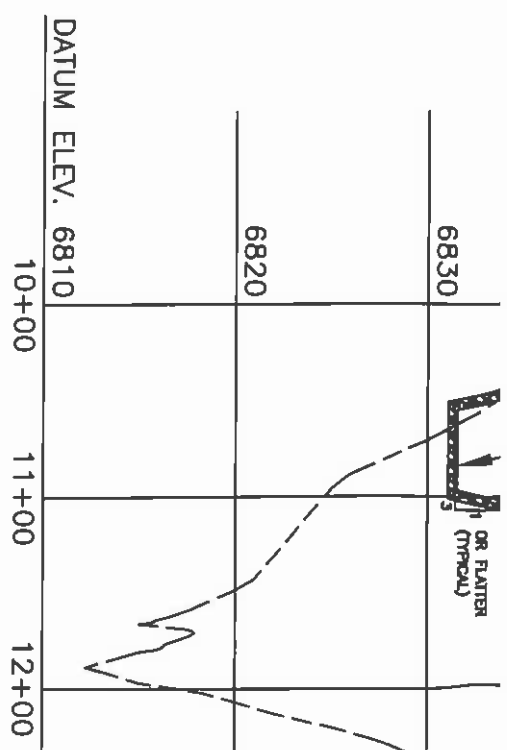
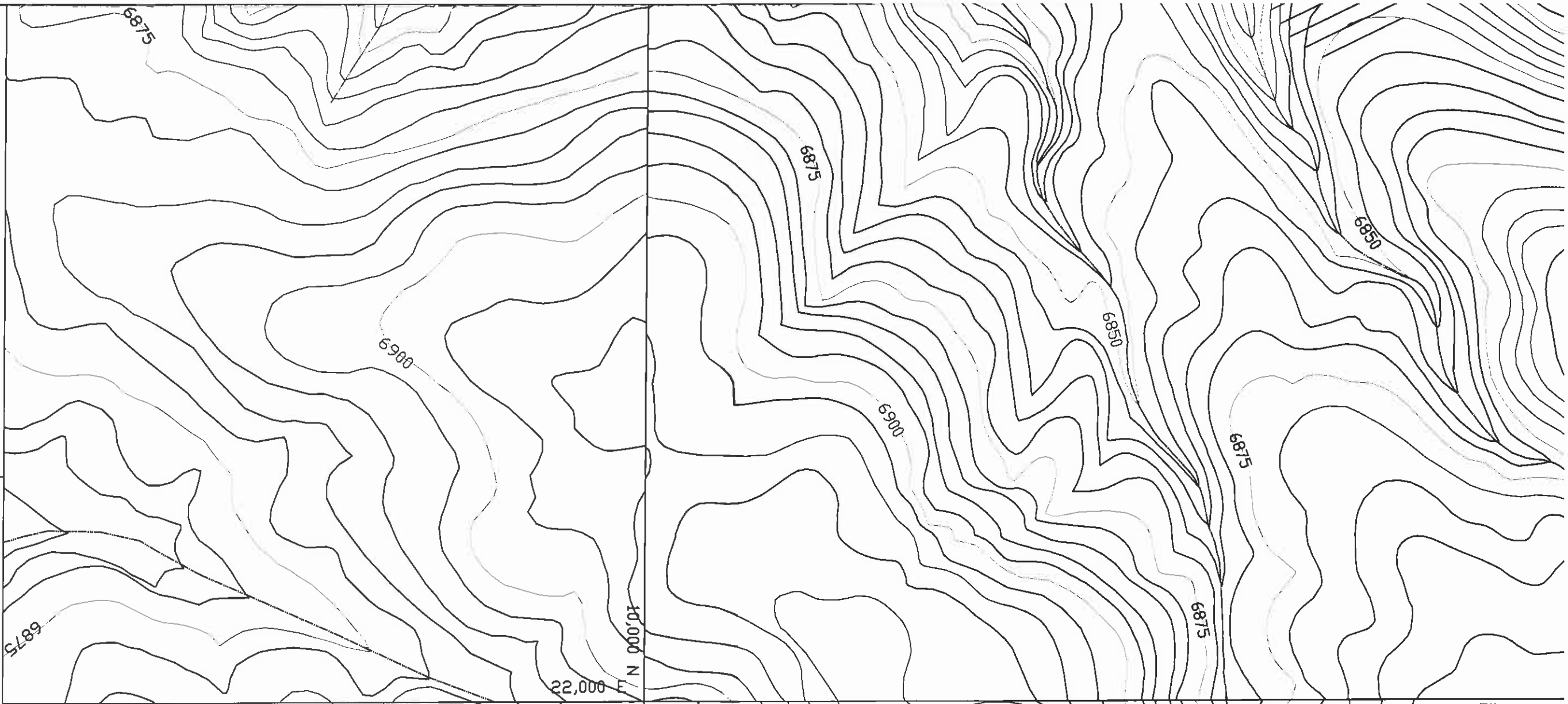
SPILLWAY MIN. D=2  
OUTFLOW CHANNEL MIN.

SECTION OF EMERGENC

NOT TO SCALE

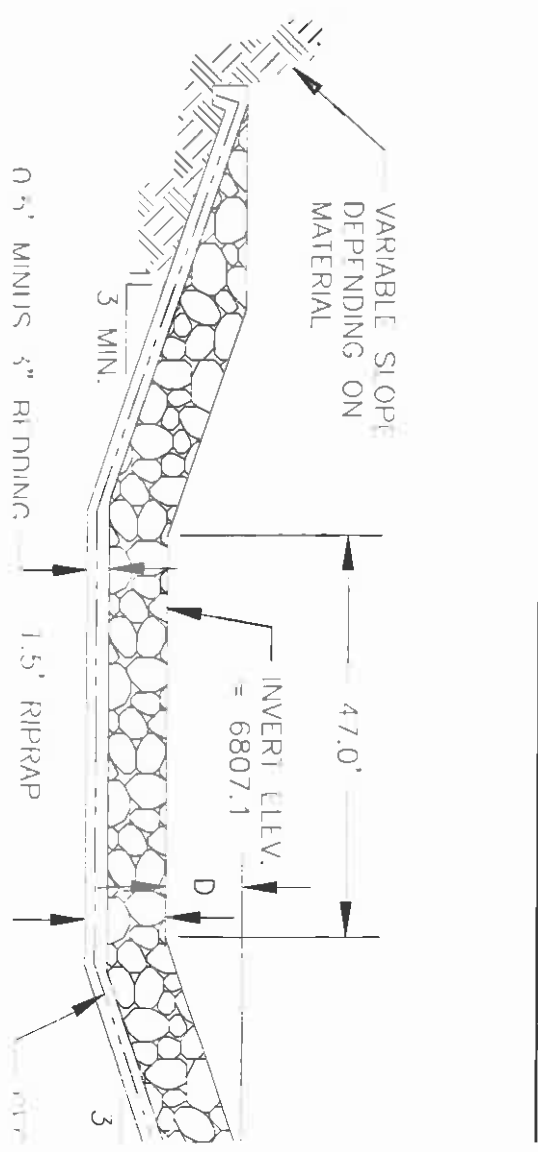
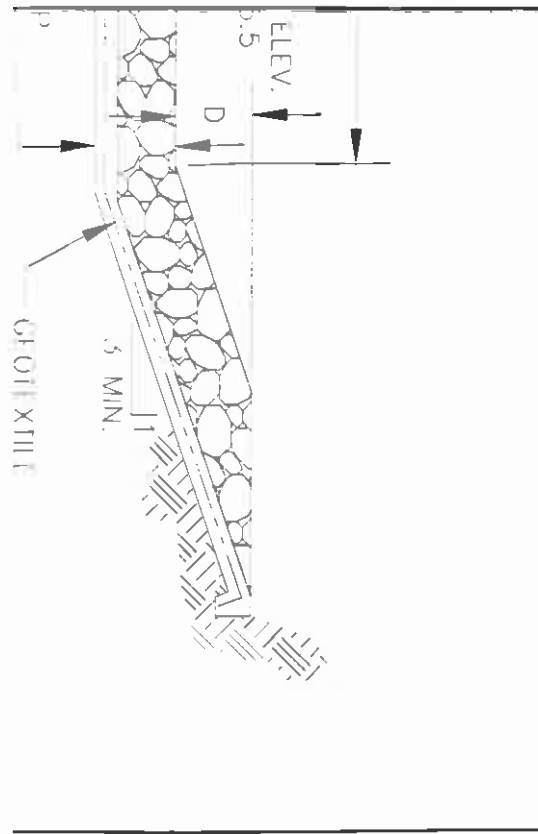
N9 - J POND

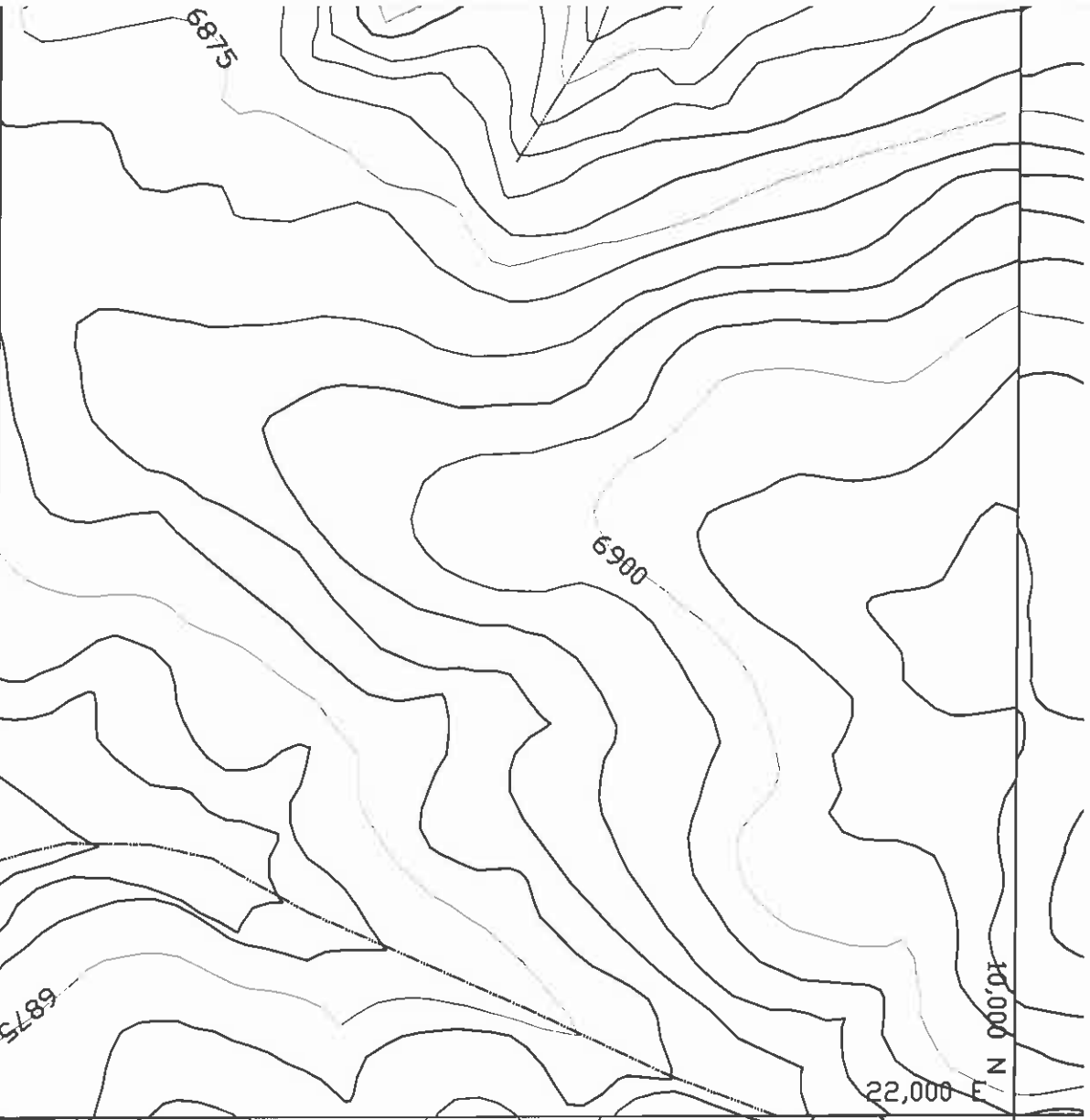




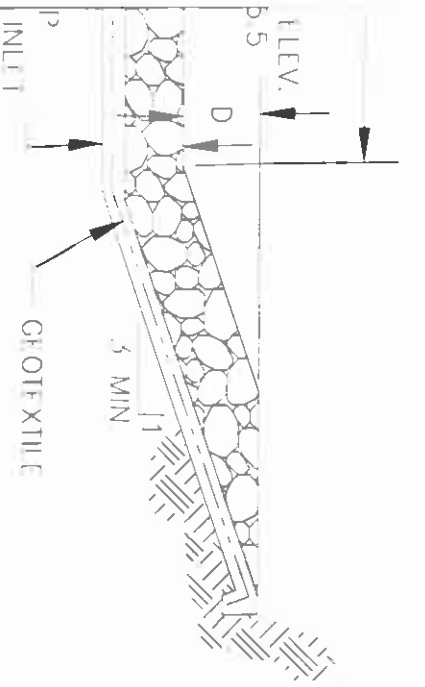
SECTION C-C  
 SCALE: HORIZ. 1" =  
 VERT. 1" =

ELEVATION (ft - in)
6770
6775
6780
6785
6785
6785
6785



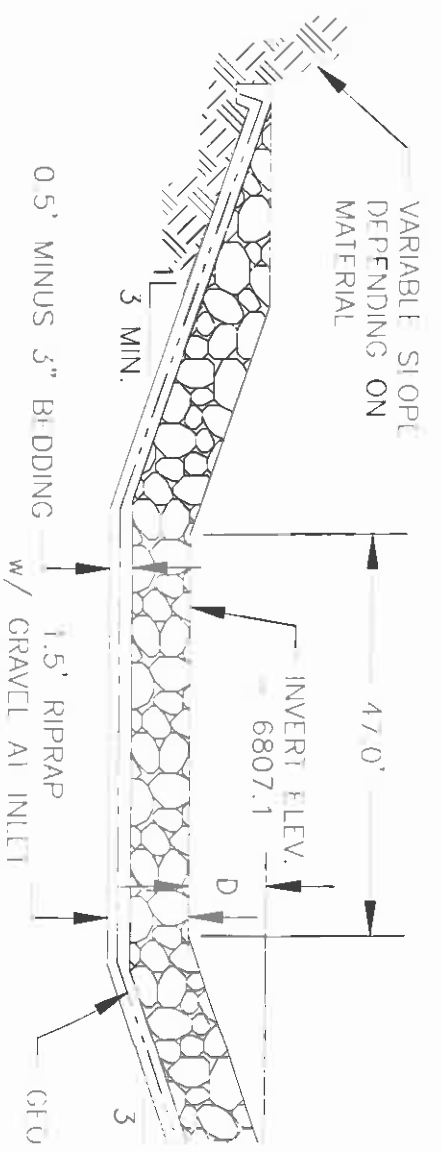


6785
6785
6785



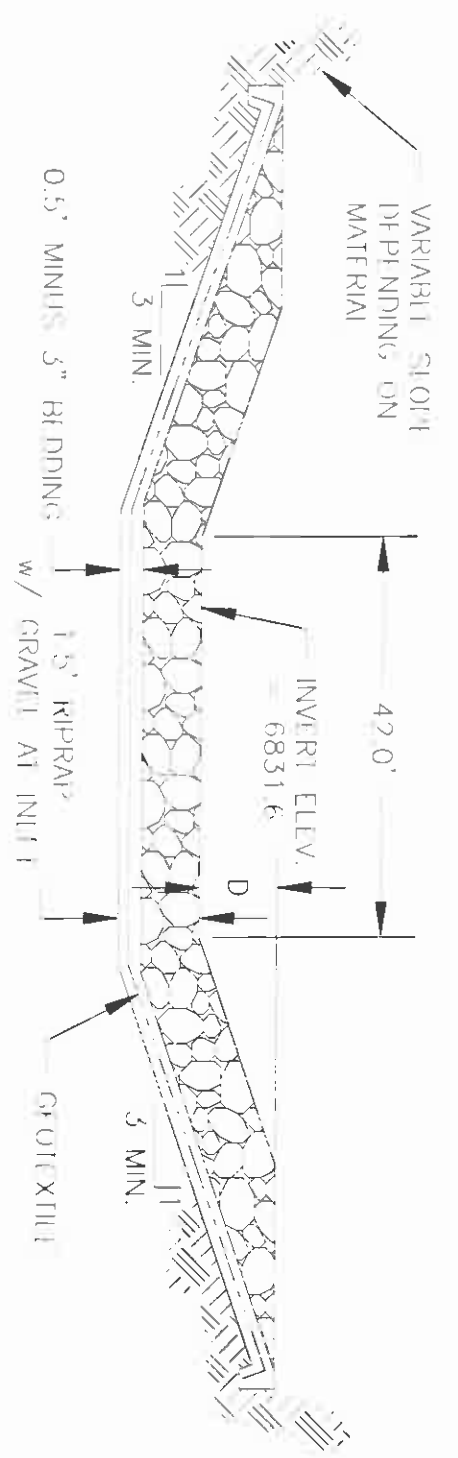
MIN. D=2.5'  
 OUTFLOW CHANNEL MIN. D=2.0'

EMERGENCY SPILLWAY  
 SCALE  
 POND



SPILLWAY MIN. D=2.5'  
 OUTFLOW CHANNEL MIN. D=2.0'

SECTION OF EMERGENCY SPILLWAY  
 NOT TO SCALE  
 N9-J1 POND



SPILLWAY MIN. D=2.5'  
 OUTFLOW CHANNEL MIN. D=2.0'

SECTION OF EMERGENCY SPILLWAY  
 NOT TO SCALE  
 N9-J2 POND