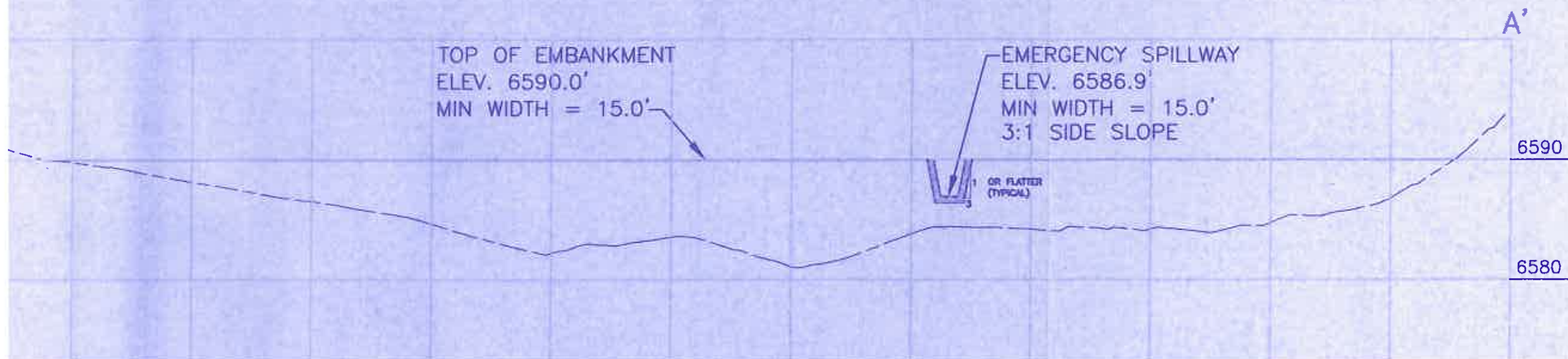
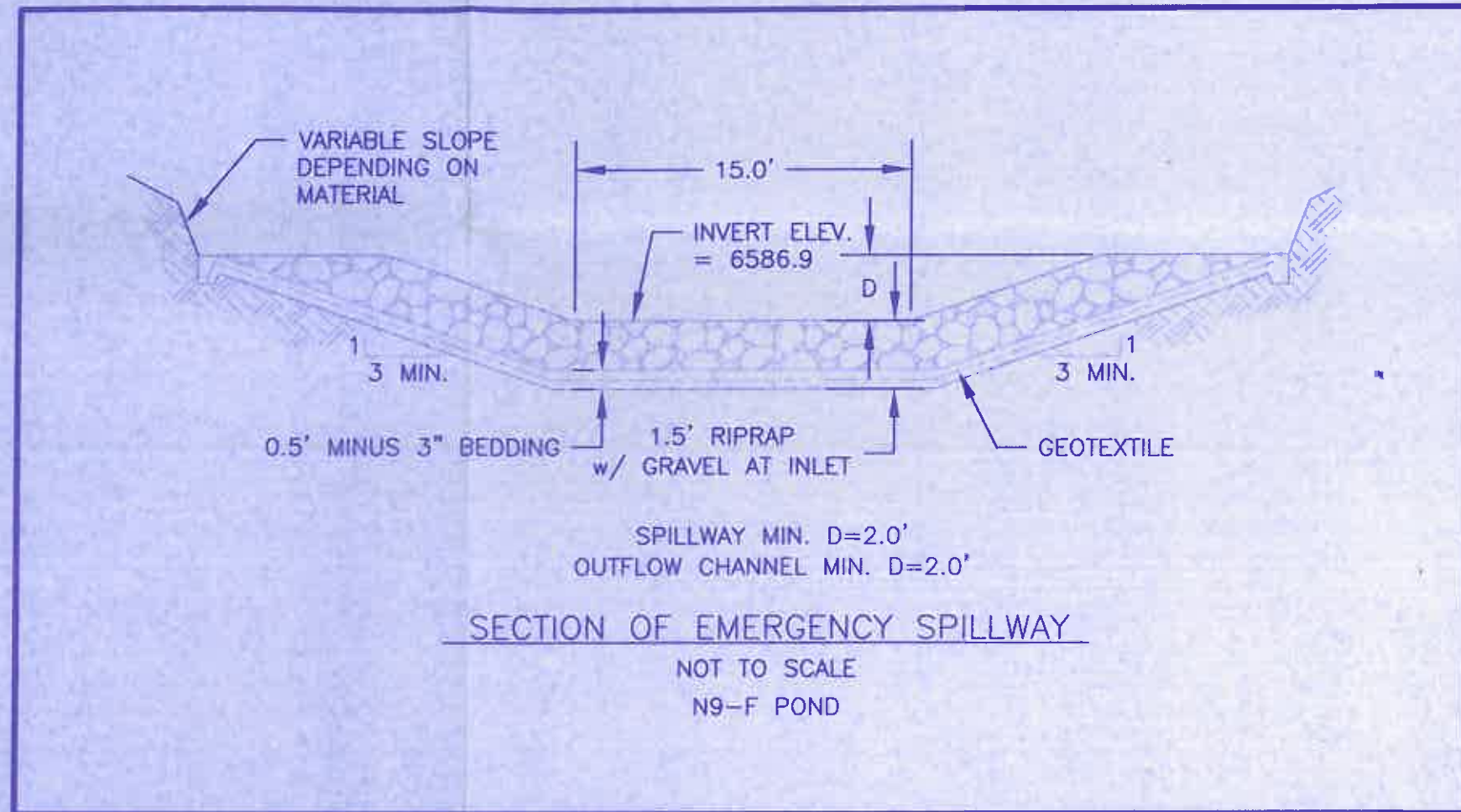


POND STAGE CAPACITY TABLE

AREA (acres)	TOTAL CAPACITY (ac-ft)	DESCRIPTION
1.25	0.00	BOTTOM OF POND
1.62	7.17	INCISED ELEV.
1.84	10.46	EMERGENCY SPILLWAY
2.20	16.72	TOP OF EMBANKMENT



N-9 MINING AREA

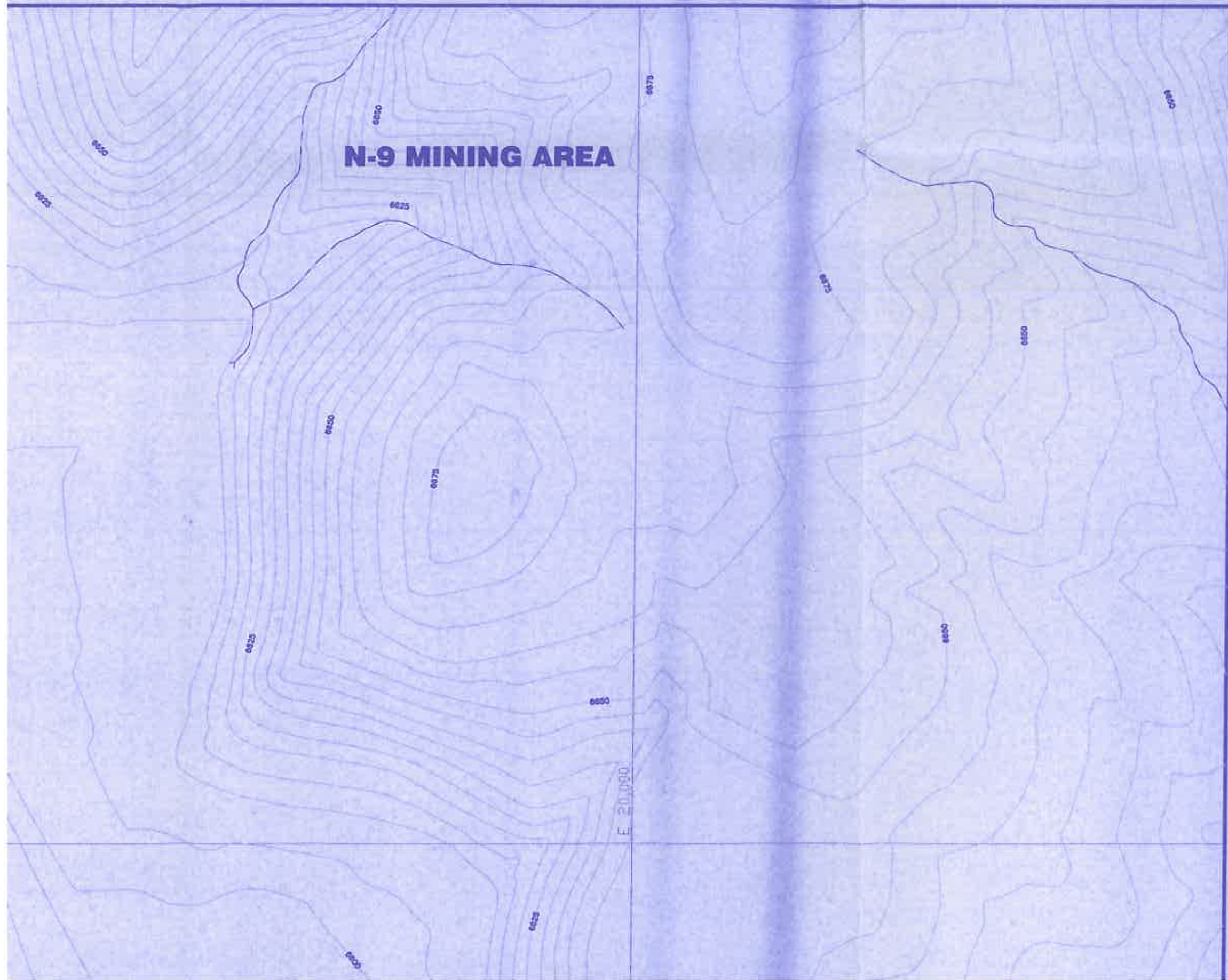
N9-F POND ST

ELEVATION (ft-msl)	STAGE (ft)	AREA (acres)
6580.0	0.0	1.25
6585.0	5.0	1.62
6586.9	6.9	1.84
6590.0	10.0	2.20

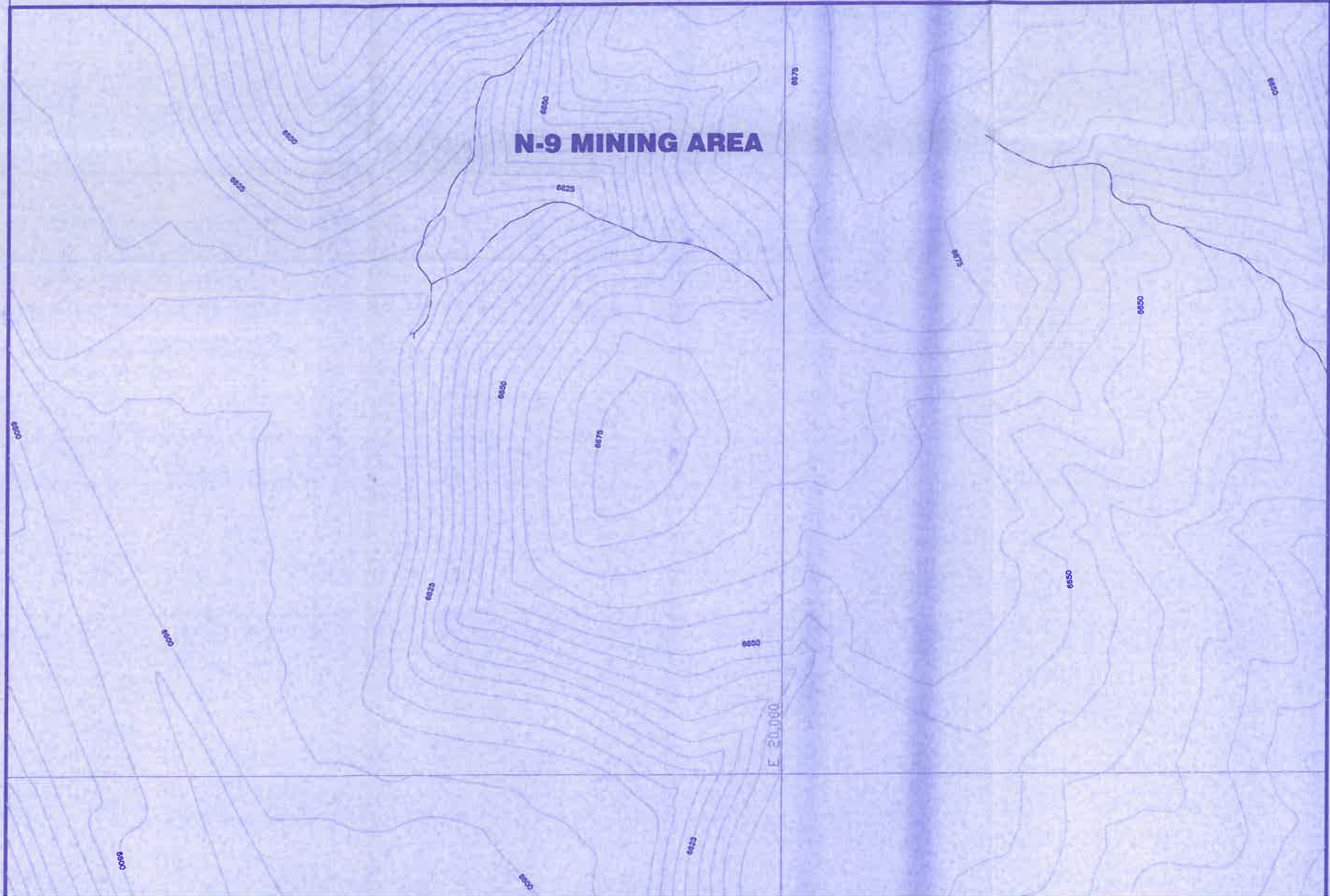
A

6590

6580

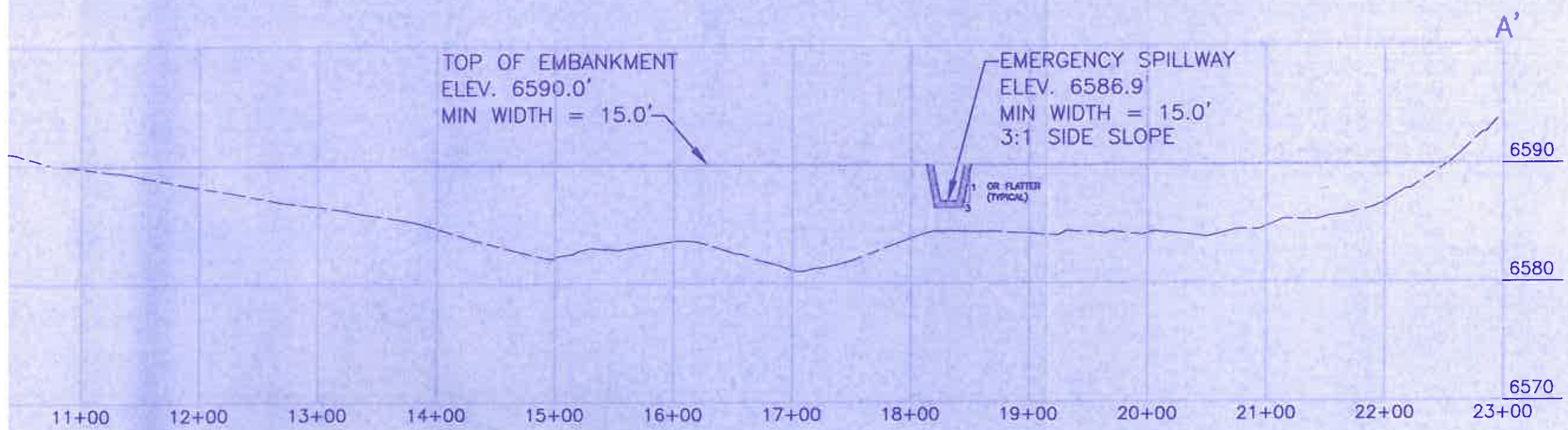
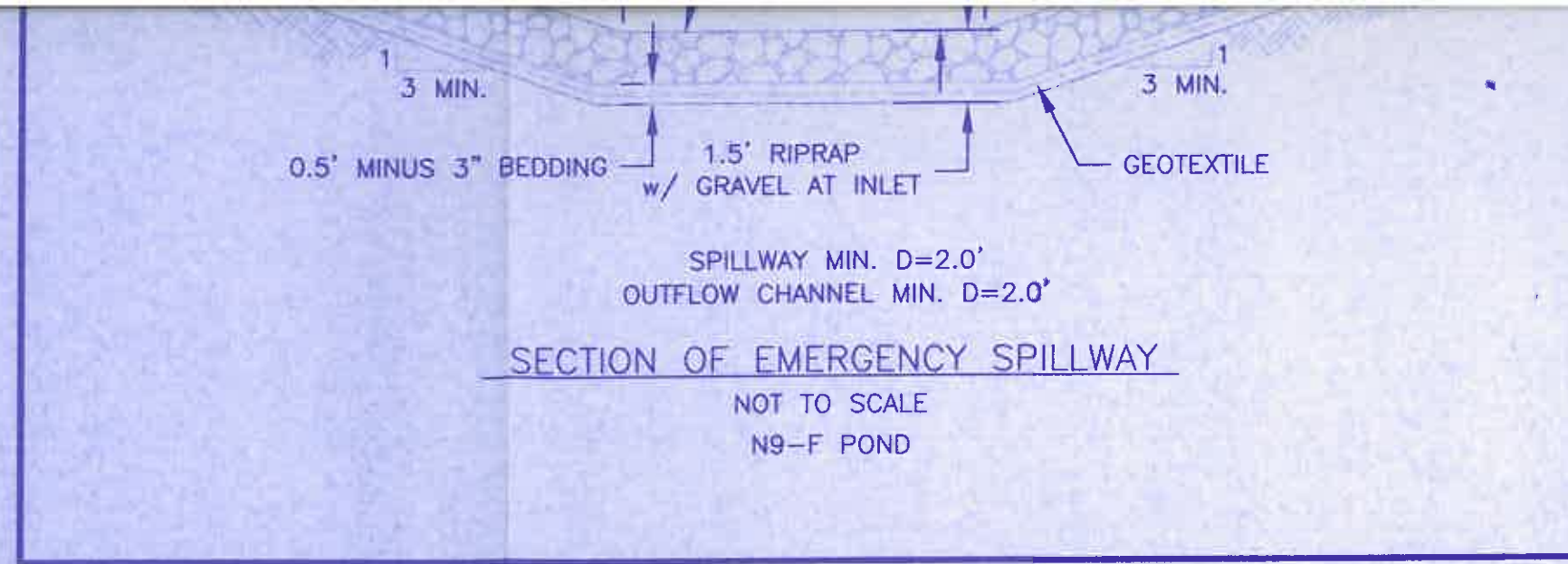


N-9 MINING AREA



POND STAGE CAPACITY TABLE

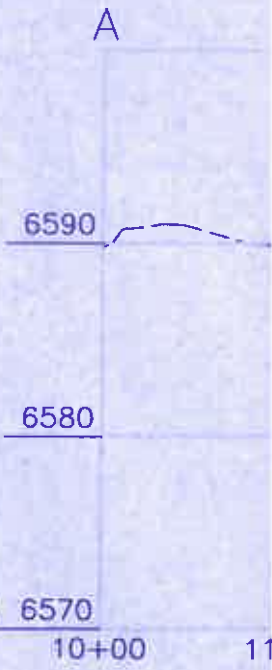
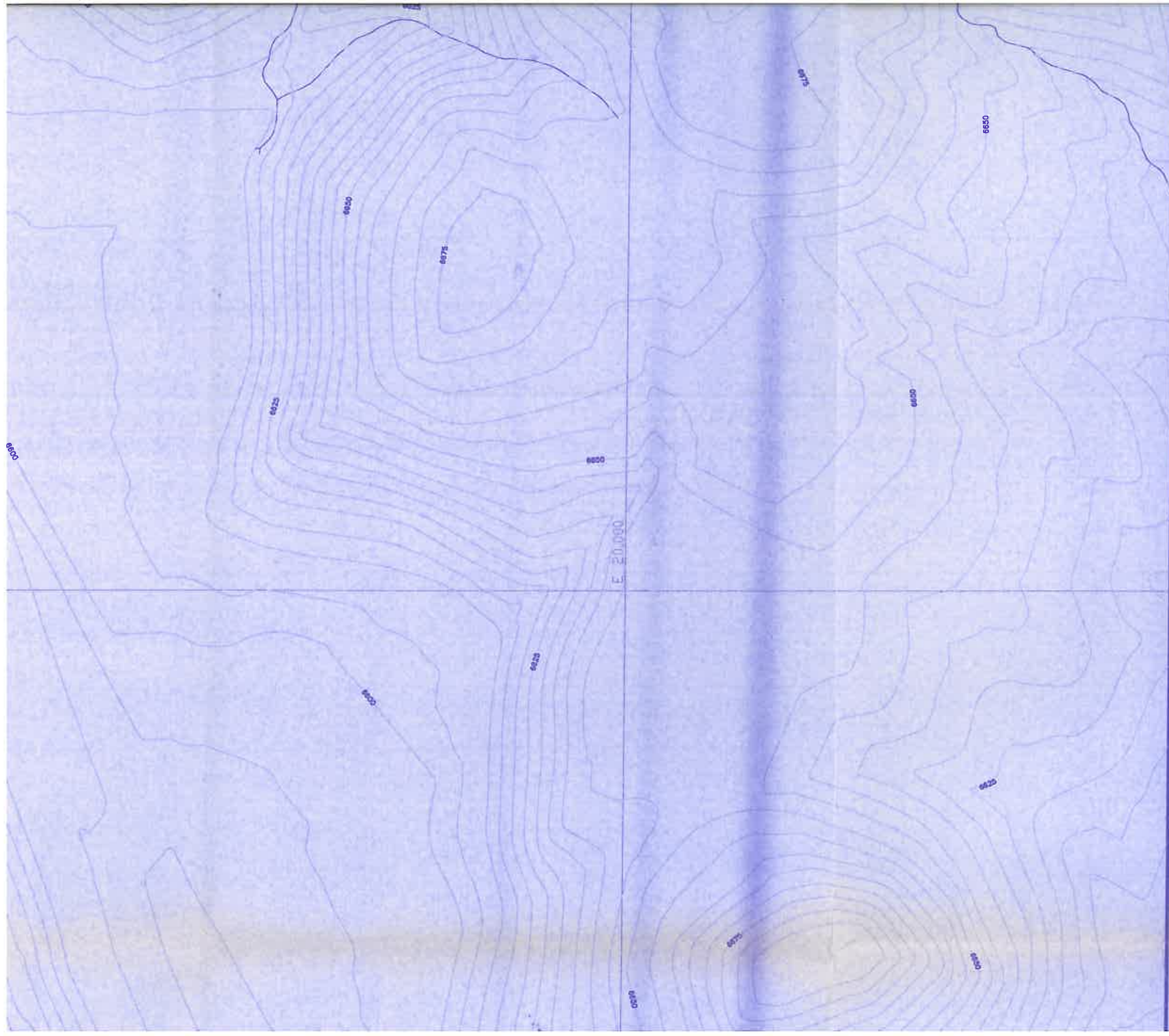
AREA (acres)	TOTAL CAPACITY (ac-ft)	DESCRIPTION
1.25	0.00	BOTTOM OF POND
1.62	7.17	INCISED ELEV.
1.84	10.46	EMERGENCY SPILLWAY
2.20	16.72	TOP OF EMBANKMENT



SECTION A - A'
 SCALE: HORIZ. 1" = 100'
 VERT. 1" = 10'

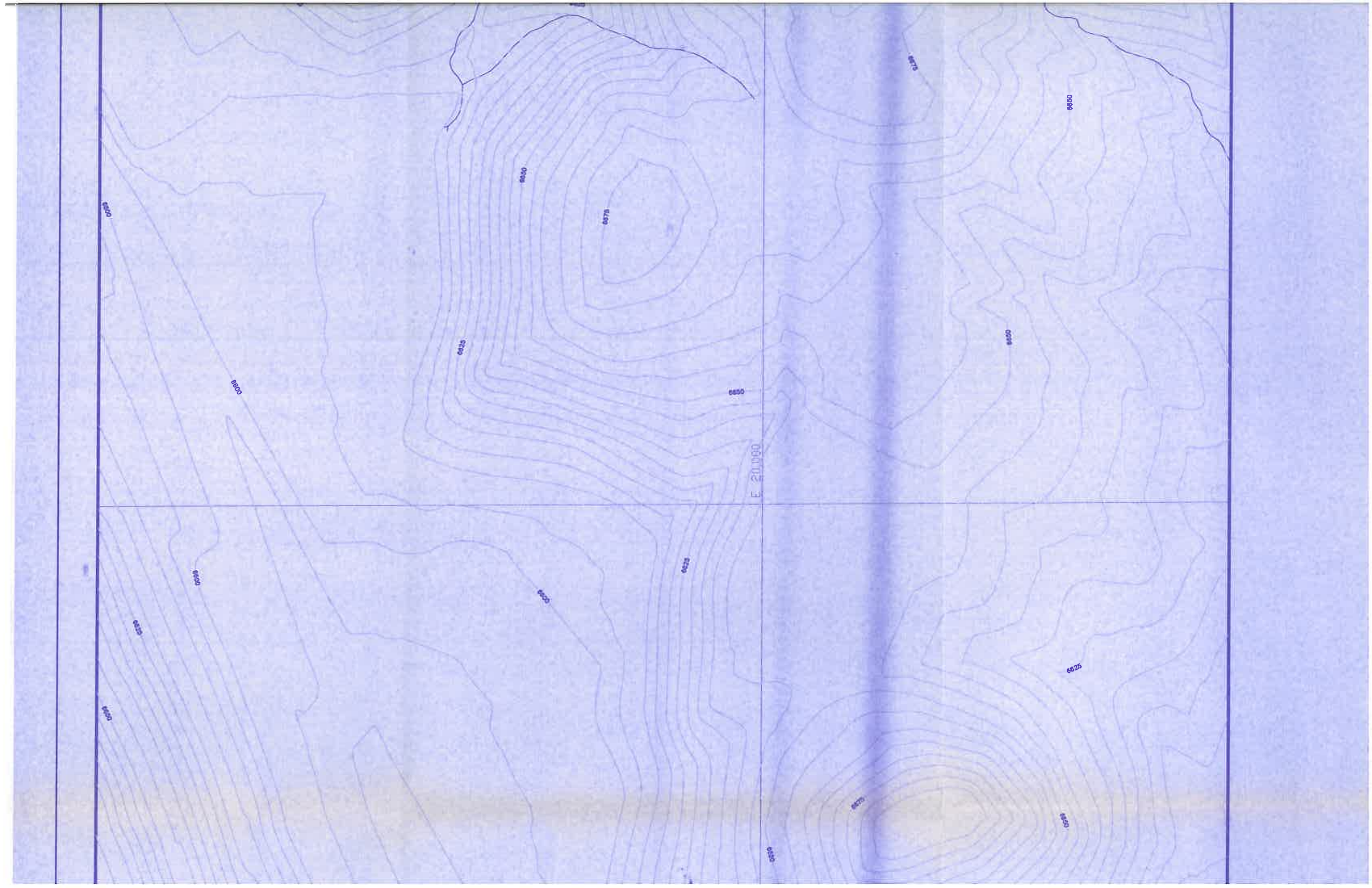
B' C C'

ELEVATION (ft-msl)	STAGE (ft)	A (a)
6580.0	0.0	1
6585.0	5.0	1
6586.9	6.9	1
6590.0	10.0	2



DATUM ELEV. 6570
10+00 11

B



6075

6000

6025

6050

6075

6050

E 20.090

6075

6025

6000

6050

6025

6050

6075

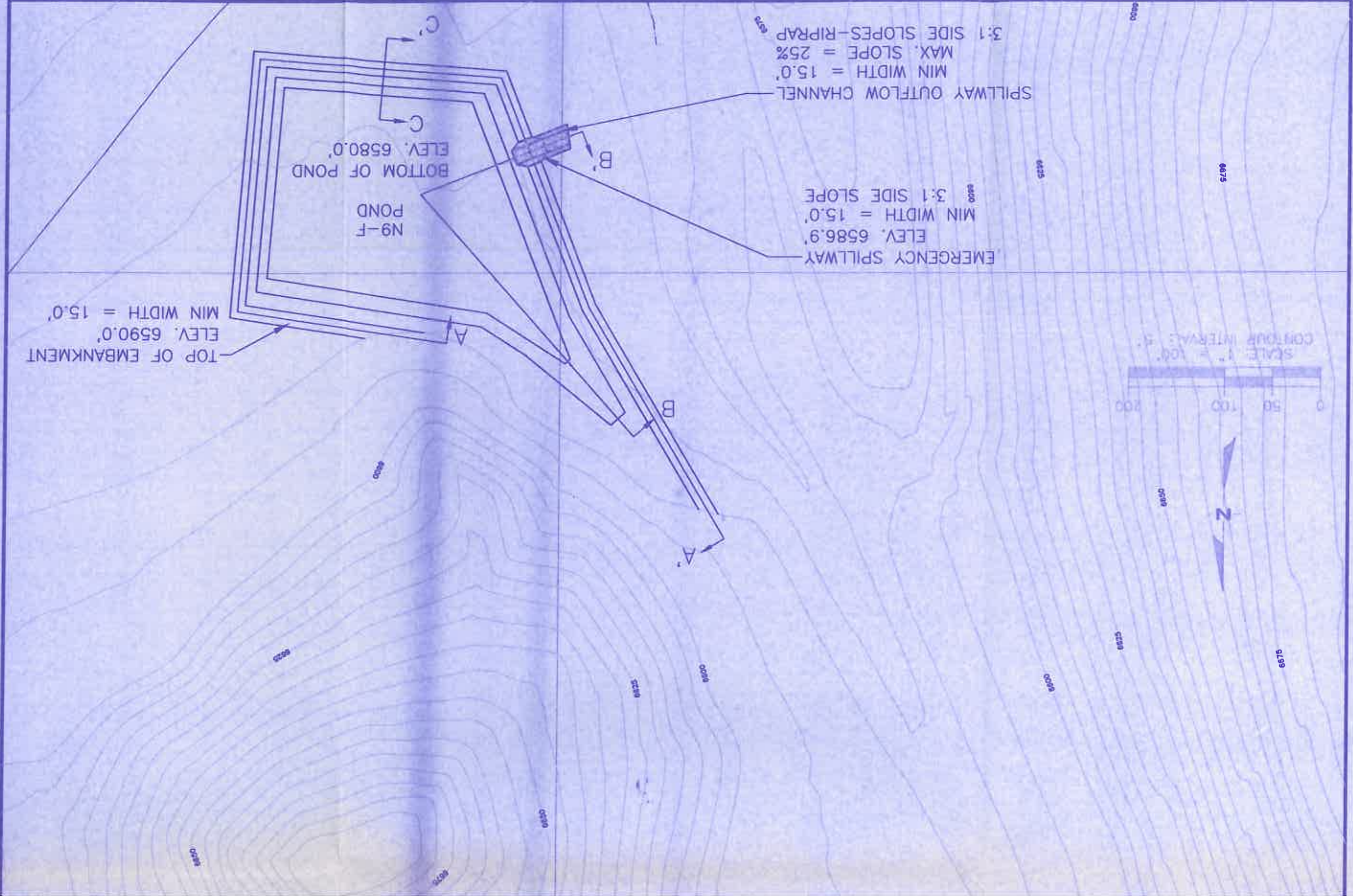
6025

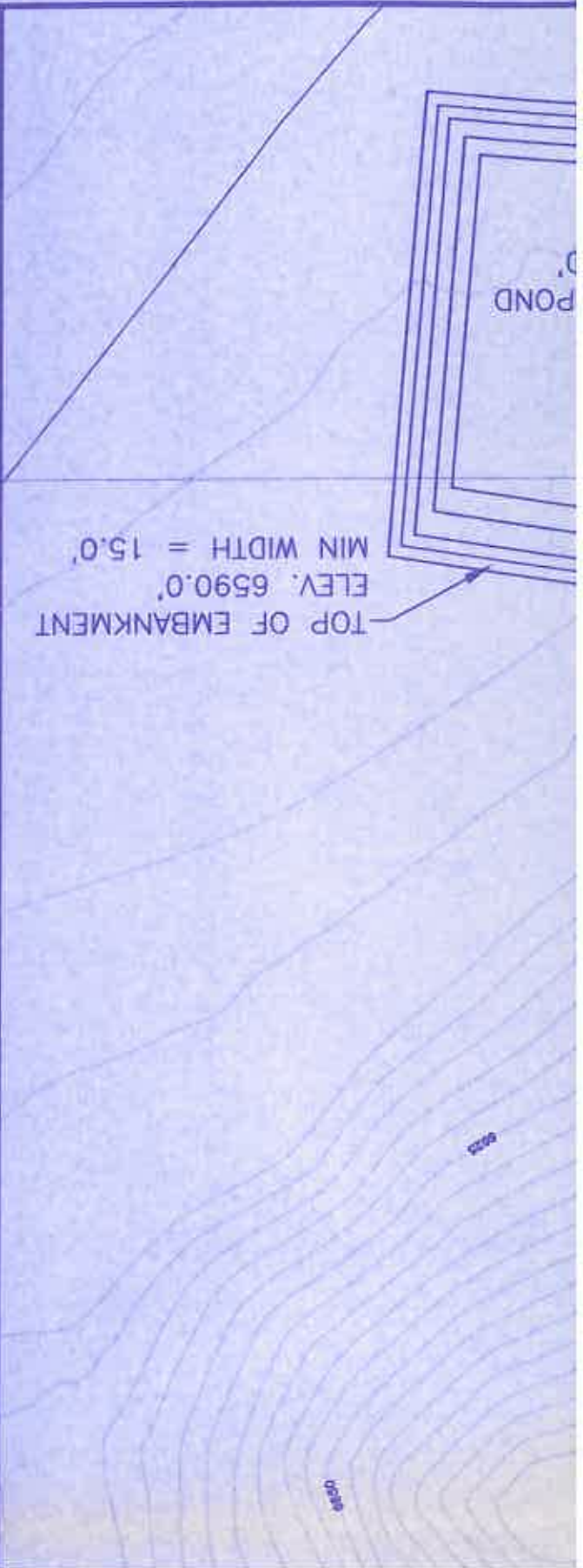
6075

6000

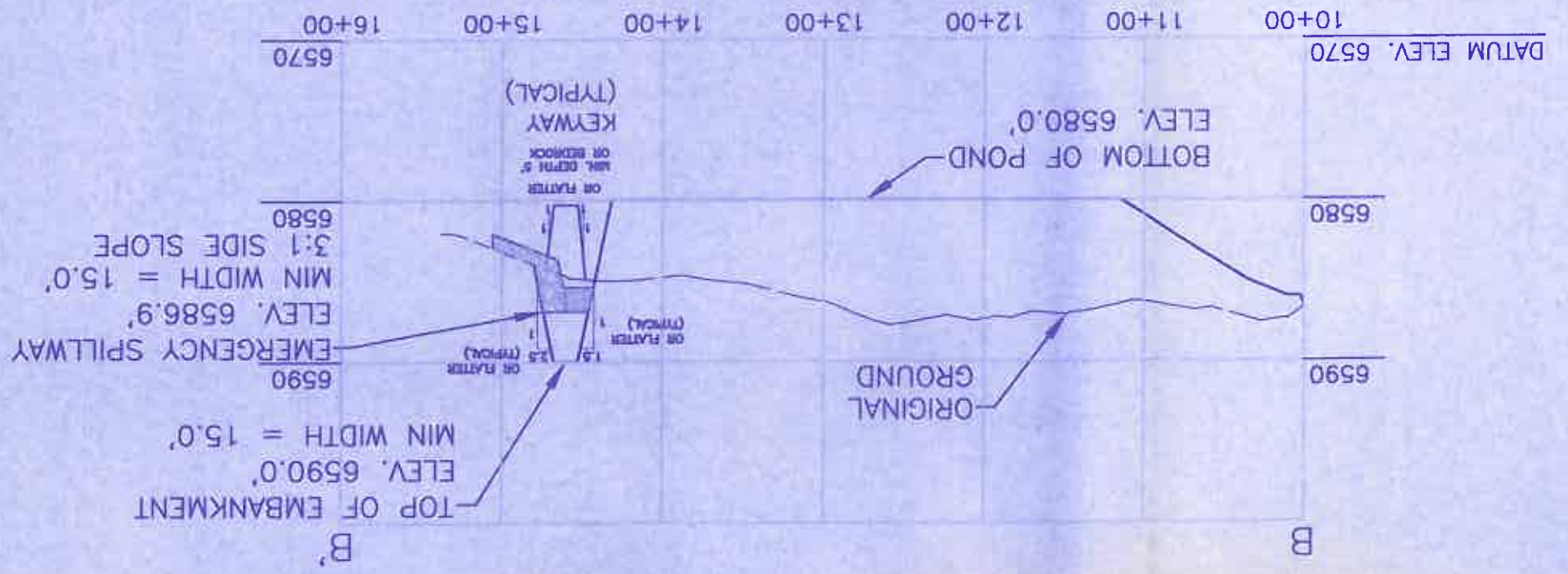
6050

6075





SECTION B - B'
 SCALE: HORIZ. 1" = 100'
 VERT. 1" = 10'



Professional Engineer's Certification
 JAMES G. SOHLEN, P.E.
 18782 ARIZONA P.E. 18782
 Engineering Supervisor
 Peabody Western Coal Company
 Date: DEC 23 2004

WOODSON
 ENGINEERING AND SURVEYING, INC.
 124 N. ELDEN ST.
 FLAGSTAFF, AZ 86001
 PHONE: (928) 774-4536 FAX: (928) 774-4548

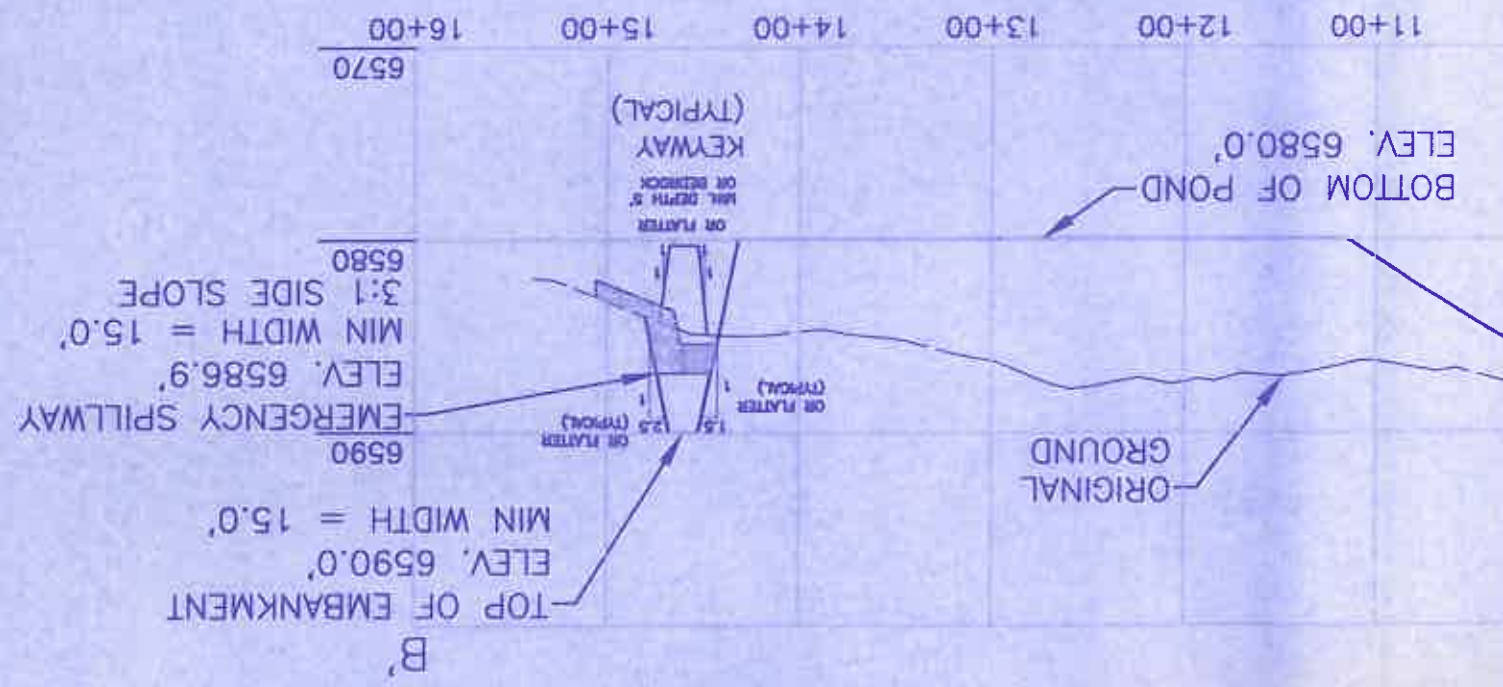
- NOTES:
- 1) General location, see Drawing No. 85400, Sheet K-7 and
 - 2) See Chapter 6, Black Mesa PAP for Construction Specifics
 - 3) See Vol. 2, Chapter 6, Attachment D, Sections 1-3 for Geotechnical Evaluation.
 - 4) Salvage topsoil in accordance with approved topsoil salvage plan.
 - 5) Reclamation of the disturbed area above the high water accordance with the approved reclamation plan.
 - 6) Ponding area side slopes, typical 3:1 slope or flatter as per topography.

- NOTES:
- 1) General location, see Drawing No. 85400, Sheet K-7 and Drawing No. 85405.
 - 2) See Chapter 6, Black Mesa PAP for Construction Specifications.
 - 3) See Vol. 2, Chapter 6, Attachment D, Sections 1-3 for description of Geotechnical Evaluation.
 - 4) Salvage topsoil in accordance with approved topsoil salvage plan.
 - 5) Reclamation of the disturbed area above the high waterline shall be in accordance with the approved reclamation plan.
 - 6) Ponding area side slopes, typical 3:1 slope or flatter and blend into natural topography.

EXHIBIT # 1	
PROPOSED N9-F	
SEDIMENTATION POND DESIGN	
KAYENTA MINE PEABODY WESTERN COAL COMPANY P. O. BOX 650 KAYENTA, ARIZONA 86033	
DESIGNED BY: GA	SCALE: AS NOTED
DRAWN BY: PEK	DRAWING DATE: 11-22-04
CHECKED BY: JGS	PHOTO DATE: 05-83
CONTOUR INTERVAL: 5 FT.	DWG FILE: POND N9-F.DWG


 JAMES G. SCHLENKER
 ENGINEERING SUPERVISOR
 PEABODY WESTERN COAL COMPANY
 ARIZONA P.E. 18782
 Date: **DEC 23 2004**

SECTION B - B'
 SCALE: HORIZ. 1" = 100'
 VERT. 1" = 10'



SECTION C - C'
 SCALE: HORIZ. 1" = 100'
 VERT. 1" = 10'

