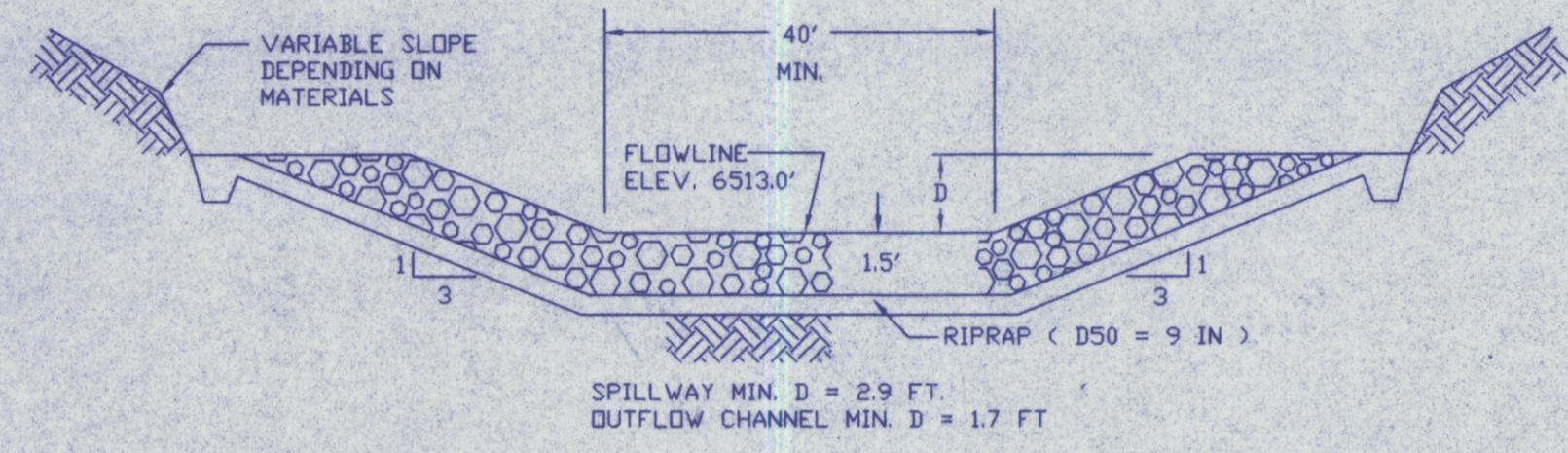
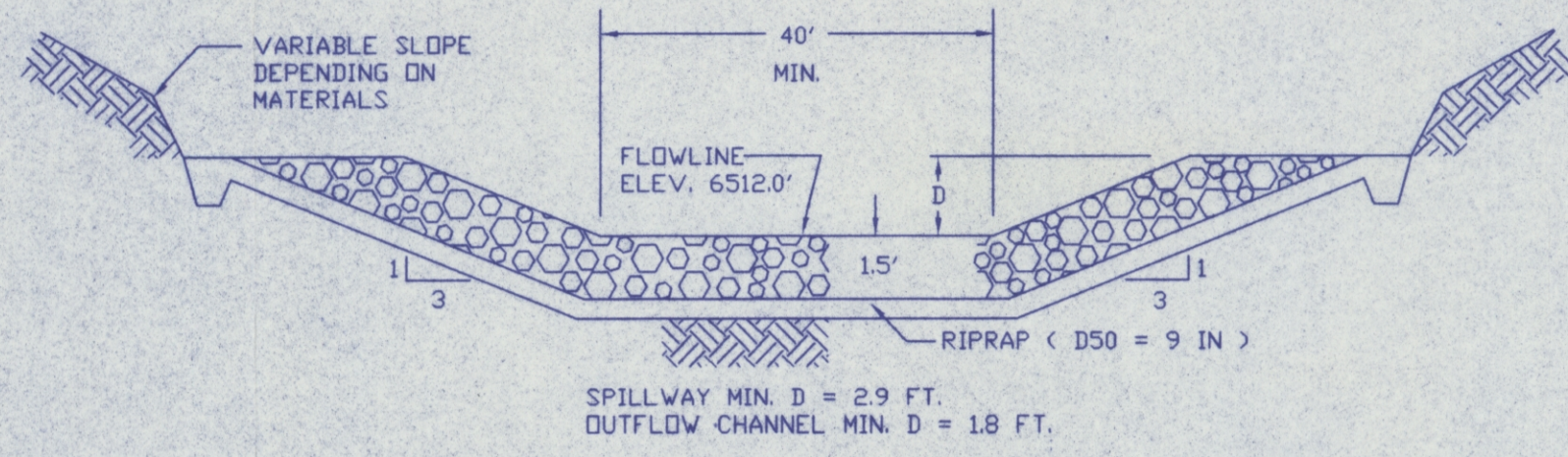


N6-K POND STAGE CAPACITY					
ELEV. (FT.-MSL)	STAGE (FT.)	AREA (AC.)	CAP. (AC.-FT.)	TOT. CAP. (AC.-FT.)	DESCRIPTION
6495	0.00	0.57	0.00	0.00	BOTTOM OF POND
6496	1.00	0.62	0.60	0.60	
6498	3.00	0.72	0.70	1.94	
6500	5.00	0.84	0.80	3.50	
6502	7.00	0.95	0.92	5.29	
6504	9.00	1.08	1.04	7.32	
6506	11.00	1.21	1.18	9.62	
6508	13.00	1.36	1.32	12.19	
6510	15.00	1.50	1.47	15.05	
6512	17.00	1.66	1.62	18.21	
6513	18.00	1.74	1.70	19.91	EMERGENCY SPILLWAY
6514	19.00	1.83	1.79	21.70	
6516	21.00	2.01	1.96	25.54	TOP OF EMBANKMENT

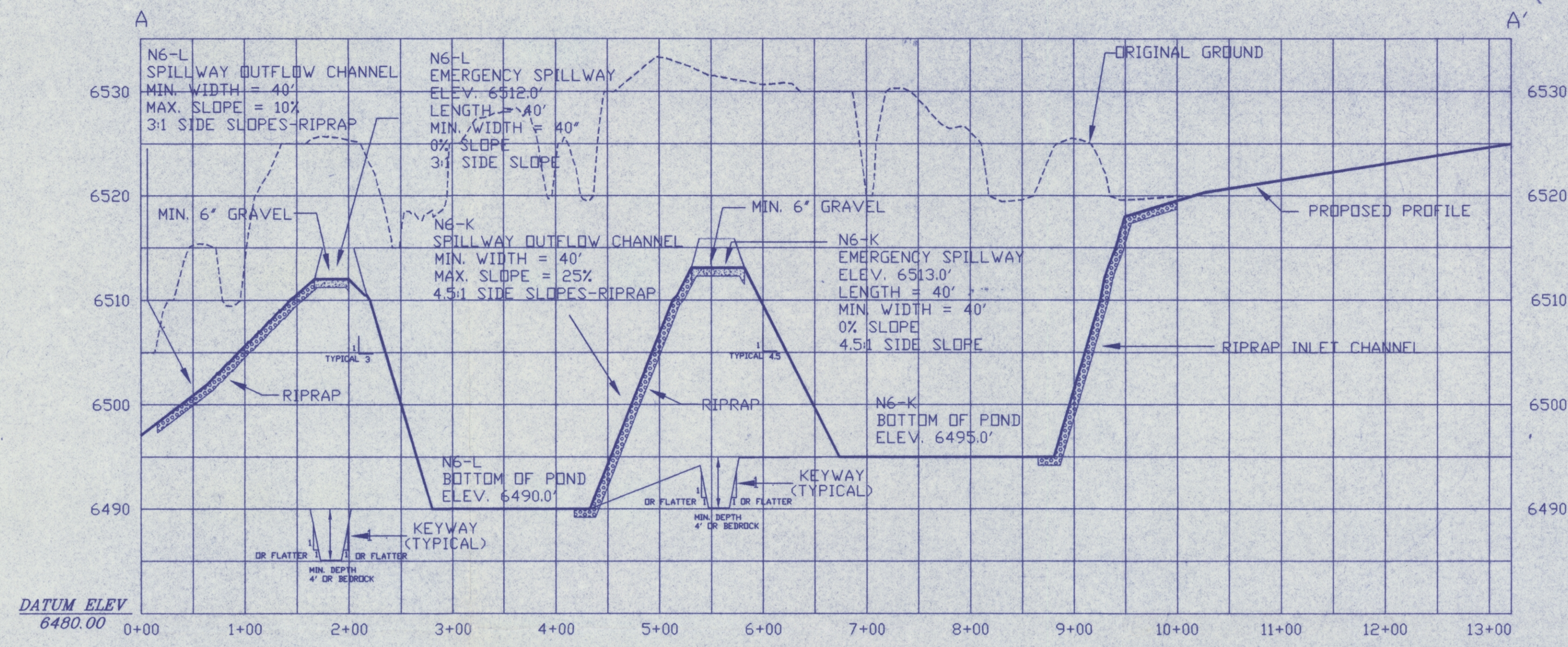
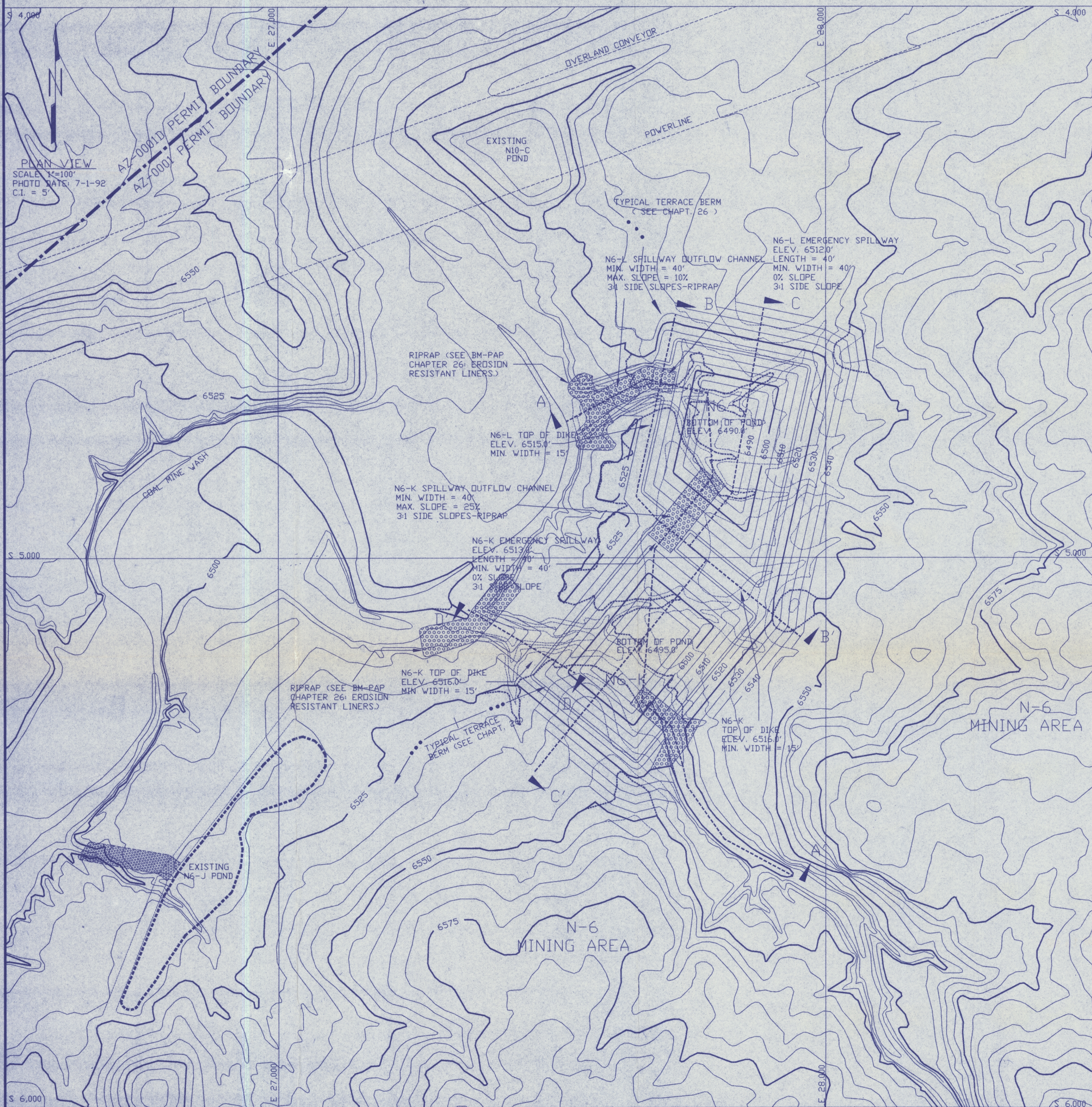
N6-L POND STAGE CAPACITY					
ELEV. (FT.-MSL)	STAGE (FT.)	AREA (AC.)	CAP. (AC.-FT.)	TOT. CAP. (AC.-FT.)	DESCRIPTION
6490	0.00	0.34	0.00	0.00	BOTTOM OF POND
6492	2.00	0.42	0.40	0.76	
6494	4.00	0.51	0.49	1.69	
6496	6.00	0.61	0.58	2.80	
6498	8.00	0.71	0.69	4.12	
6500	10.00	0.82	0.80	5.65	
6502	12.00	0.90	0.88	7.37	
6504	14.00	0.98	0.97	9.26	
6506	16.00	1.12	1.07	11.33	
6508	18.00	1.31	1.26	13.75	
6510	20.00	1.51	1.46	16.56	
6512	22.00	1.67	1.63	19.74	EMERGENCY SPILLWAY
6514	24.00	1.84	1.80	23.26	
6515	25.00	2.00	1.91	25.17	TOP OF EMBANKMENT



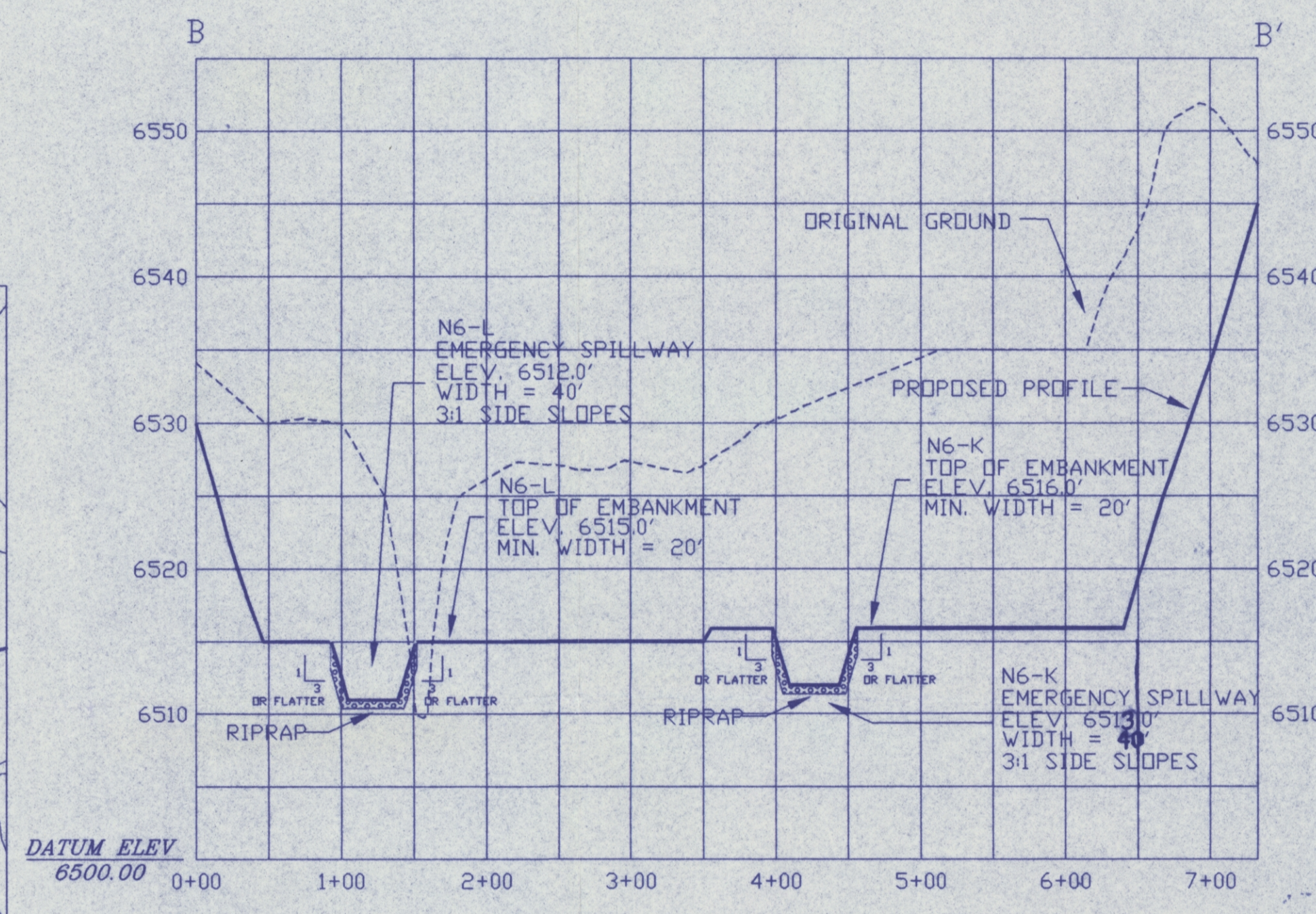
PROPOSED N6-K POND  
TYPICAL SECTION OF EMERGENCY SPILLWAY  
(NOT DRAWN TO SCALE)



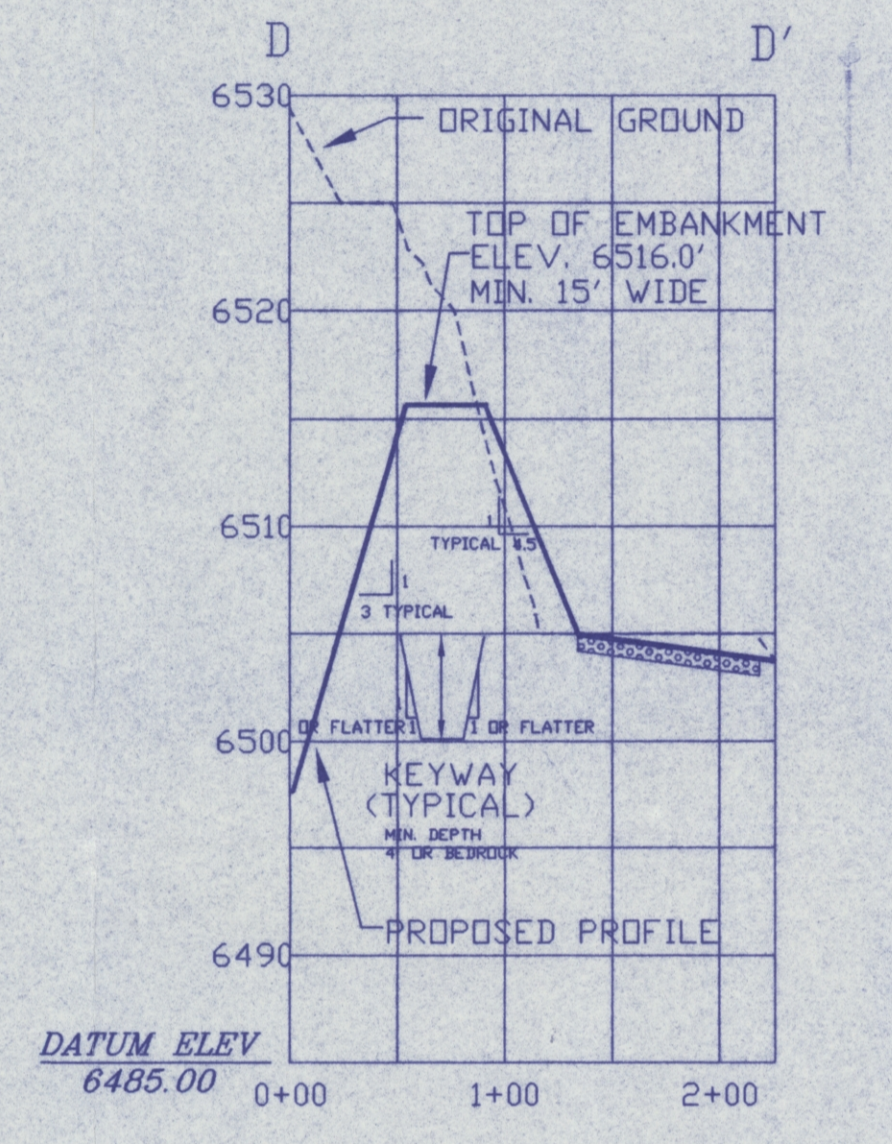
PROPOSED N6-L POND  
TYPICAL SECTION OF EMERGENCY SPILLWAY  
(NOT DRAWN TO SCALE)



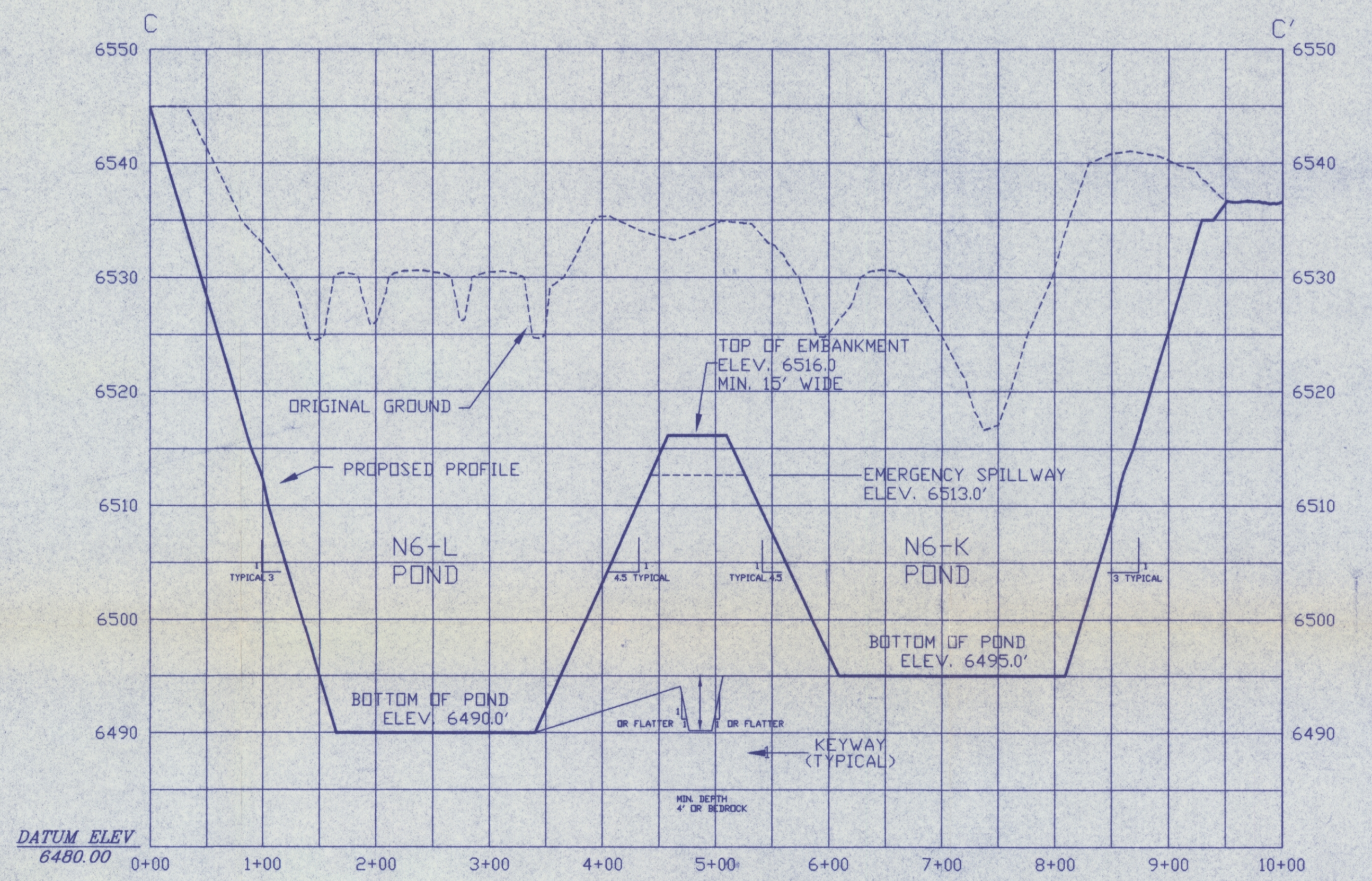
SECTION A - A'  
SCALE: HORIZ. 1"=100'  
VERT. 1"=10'



SECTION B - B'  
SCALE: HORIZ. 1"=100'  
VERT. 1"=10'



SECTION D - D'  
SCALE: HORIZ. 1"=100'  
VERT. 1"=10'



SECTION C - C'  
SCALE: HORIZ. 1"=100'  
VERT. 1"=10'

ENGINEER'S CERTIFICATION  
JAMES G. SHERIDAN, P.E.  
Professional Engineer  
Peabody Western Coal Company

ARIZONA P.E. 18782  
Date: MAR 18 1997



- NOTES:
- 1) General location, see Drawing No. 85400, Sheet K-7 and Drawing No. 85405.
  - 2) See Chapter 6, Black Mesa PAP for Construction Specifications.
  - 3) See Vol. 2, Chapter 6, Attachment D, Sections 1-3 for description of Geotechnical Evaluation.
  - 4) Salvage topsoil in accordance with approved topsoil salvage plan.
  - 5) Reclamation of the disturbed area above the high waterline shall be in accordance with the approved reclamation plan.
  - 6) Ponding area side slopes, typical 3:1 slope or flatter and blend into natural topography.

EXHIBIT NO. 1  
PROPOSED N6-L & N6-K  
SEDIMENTATION POND DESIGN  
BLACK MESA MINE  
PEABODY WESTERN 1300 S. YALE FLAGSTAFF, AZ 86001  
DESIGNED BY: PWCC SCALE: 1"=100'  
DRAWN BY: PWCC DRAWING DATE: 01-17-97  
CHECKED BY: JGS PHOTO DATE: 07-01-92  
DWG FILE: N6KPOND.DWG CONTOUR INTERVAL: 5 FT.