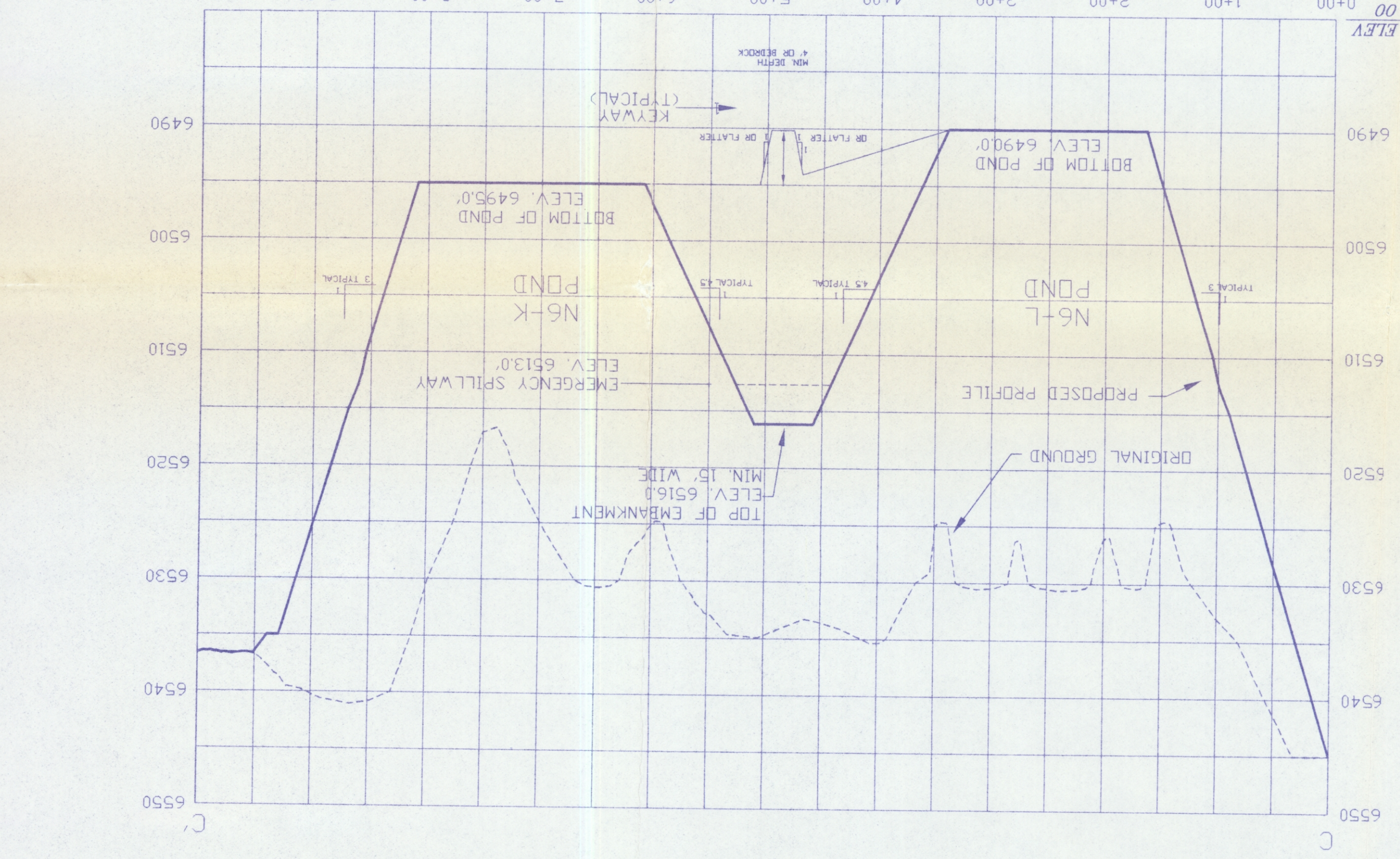


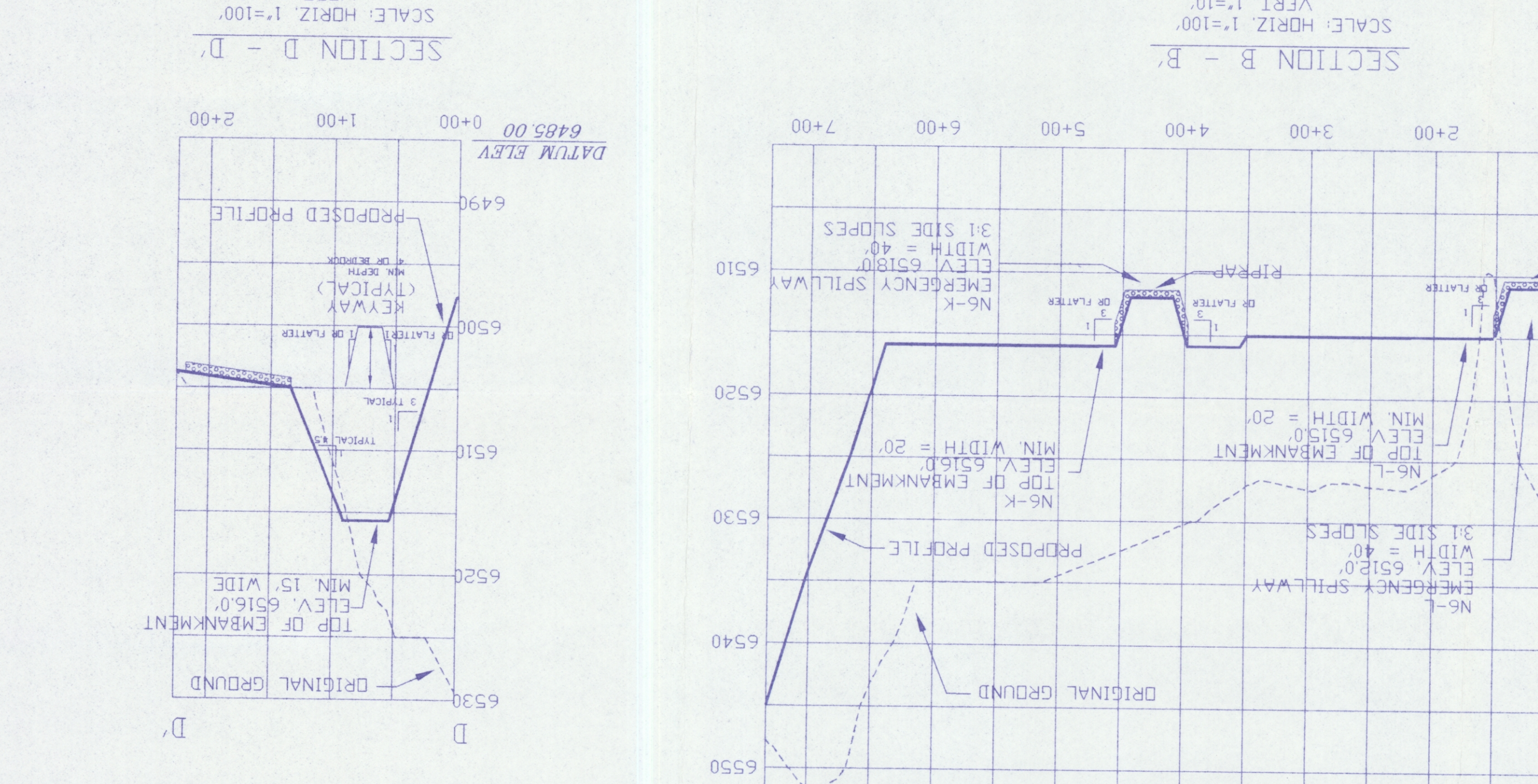
EXHIBIT NO. 1
 PROPOSED N6-L & N6-K
 SEDIMENTATION POND DESIGN
 BLACK MESA MINE
 DRAWN BY: P.W.C.
 CHECKED BY: J.S.C.
 DATE: 07-01-92
 SCALE: 1"=100'
 DRAWING DATE: 01-17-92
 DVG FILE: N6POND.DWG
 CONTOUR INTERVAL: 5 FT.
 REBAR: WESTERN 1300 S YALE FLAGSTIFF AZ 86001
 NOTES:
 1) General location, see Drawing No. 85400, Sheet K-7 and Drawing No. 85405.
 2) See Chapter 5, Black Mesa PAP for Construction Specifications.
 3) See Vol. 2, Chapter 6, Attachment B, Sections 1-3 for description of geotechnical description.
 4) Salvage topsoil in accordance with approved topsoil salvage plan.
 5) Reclamation of the disturbed area above the high waterline shall be in accordance with the approved reclamation plan.
 6) Ponding area side slopes, typical 3:1 slope on flatter and break into natural topography.
 7) Occurrence with the approved reclamation plan.

ARIZONA P.E. 18282
 Date: JAN 20 1997
 PROFESSIONAL ENGINEER'S CERTIFICATION
 James G. ...
 ARIZONA REGISTERED PROFESSIONAL ENGINEER
 CIVIL ENGINEERING
 No. 18282
 State of Arizona
 Seal of the State of Arizona
 Department of Transportation
 Division of Water Resources
 Phoenix, Arizona

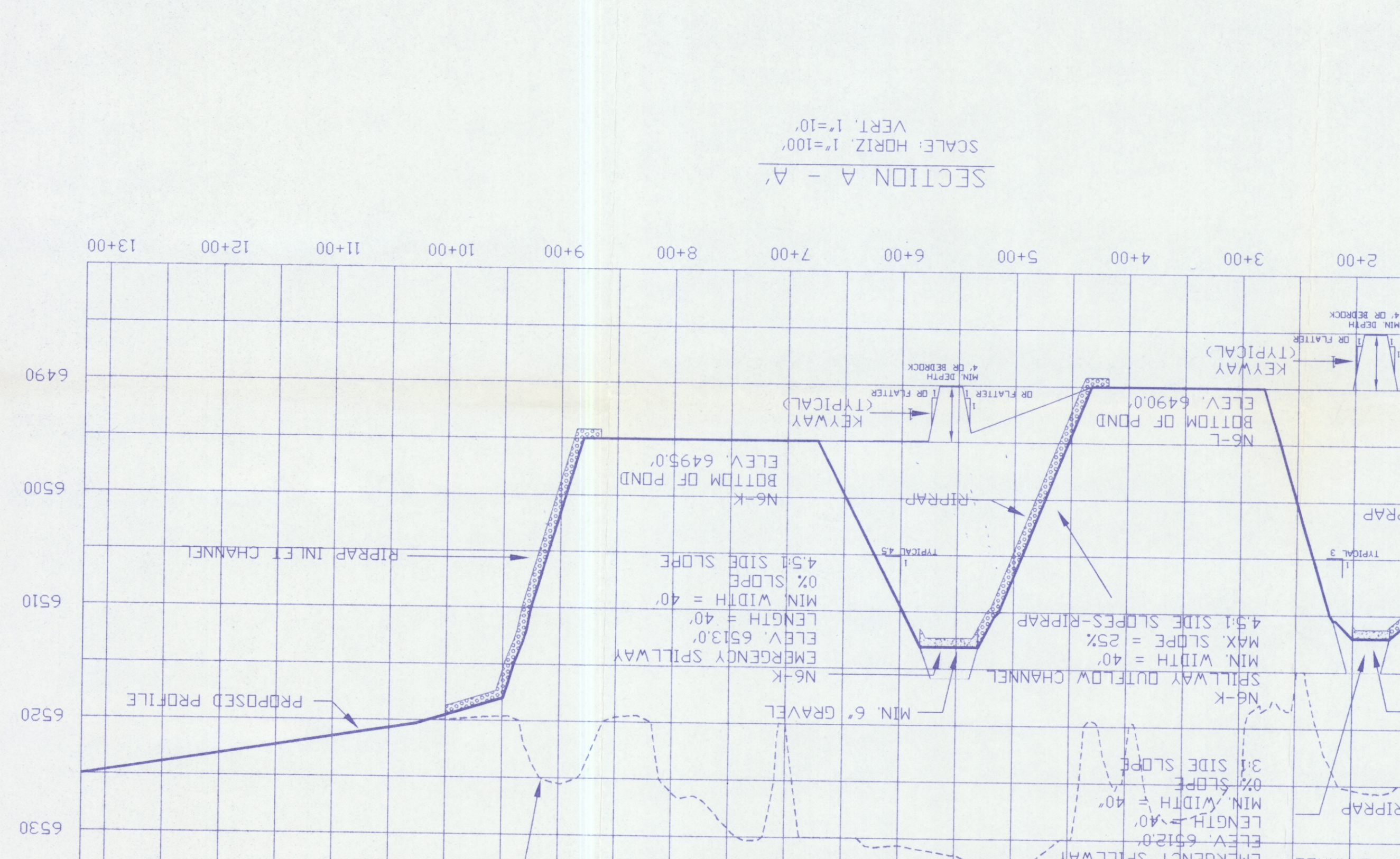
SECTION C - C
 SCALE: HORIZ. 1"=100'
 VERT. 1"=10'



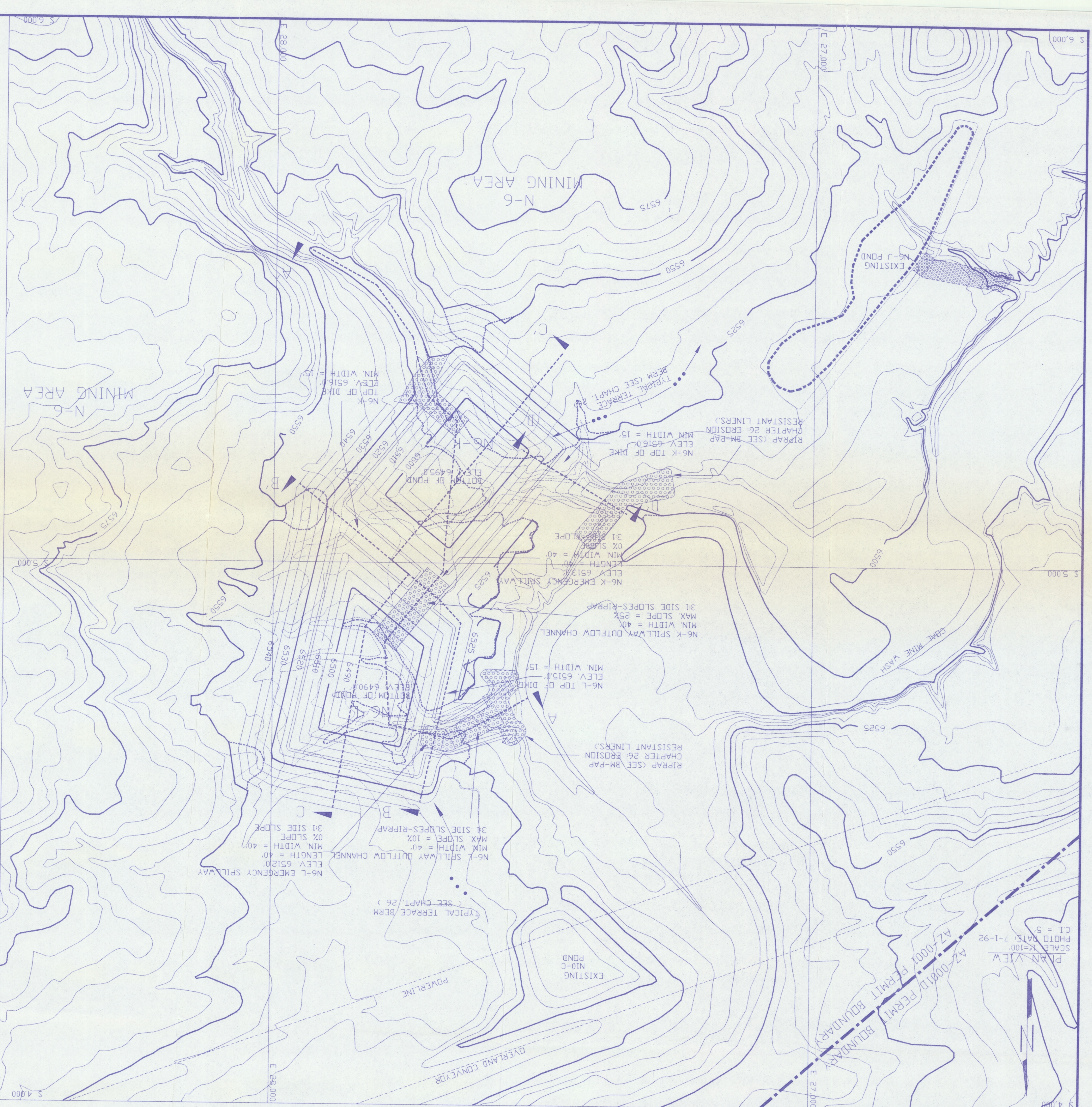
SECTION D - D
 SCALE: HORIZ. 1"=100'
 VERT. 1"=10'



SECTION B - B
 SCALE: HORIZ. 1"=100'
 VERT. 1"=10'

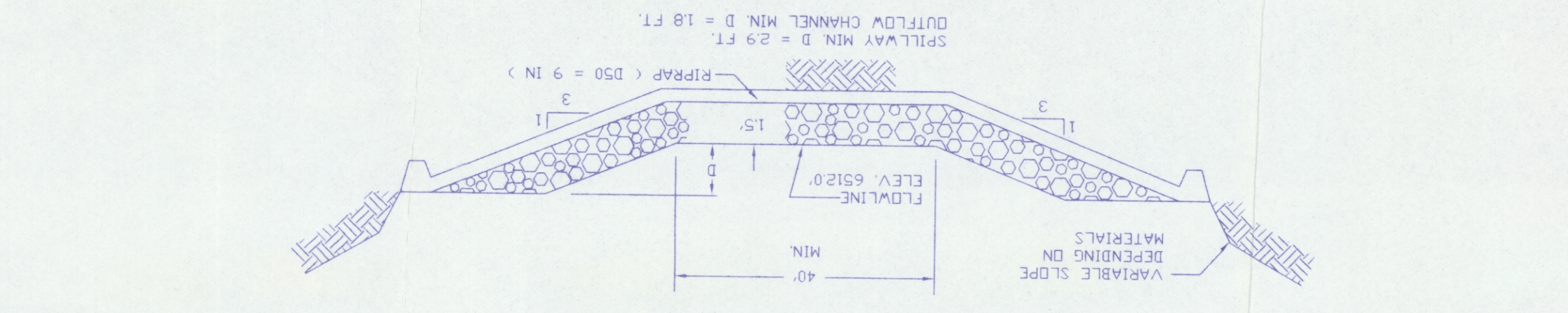


SECTION A - A
 SCALE: HORIZ. 1"=100'
 VERT. 1"=10'



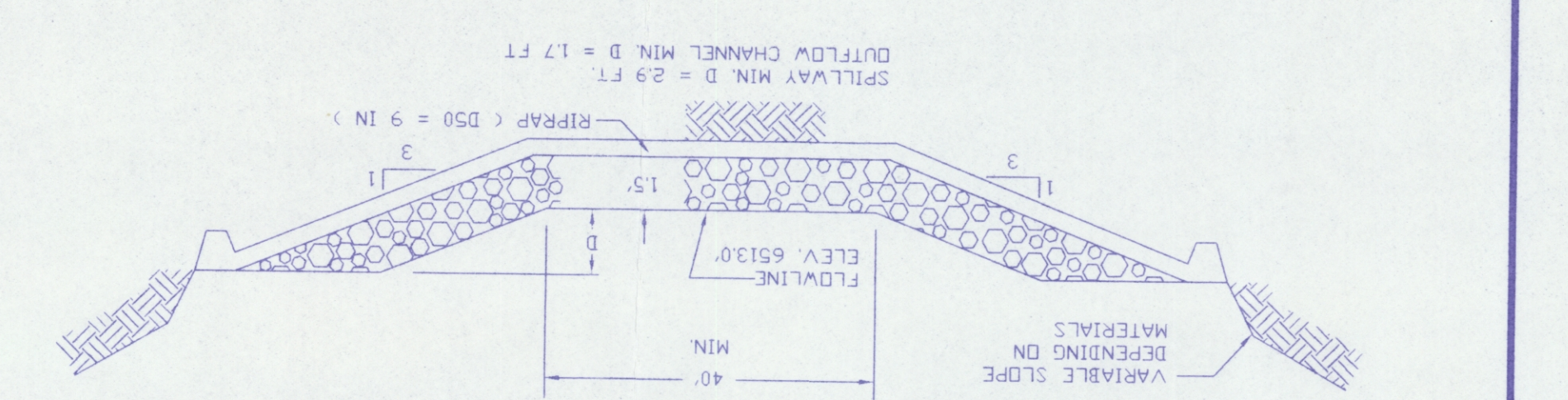
PLAN VIEW
 SCALE: 1"=100'
 PLAN DATE: 7-1-92
 CT = 5

PROPOSED N6-L POND
 TYPICAL SECTION OF EMERGENCY SPILLWAY
 (NOT DRAWN TO SCALE)



ELEV.	STAGE	AREA	CAP.	TOT. CAP.	DESCRIPTION
6515		25.00	2.00	25.17	TOP OF EMBANKMENT
6514		24.00	1.84	23.26	
6512		22.00	1.63	19.74	EMERGENCY SPILLWAY
6510		20.00	1.51	16.56	
6508		18.00	1.31	13.75	
6506		16.00	1.12	11.33	
6504		14.00	0.98	9.26	
6502		12.00	0.88	7.37	
6500		10.00	0.82	5.55	
6498		8.00	0.71	4.12	
6496		6.00	0.61	2.80	
6494		4.00	0.51	1.69	
6492		2.00	0.42	0.76	
6490		0.00	0.34	0.00	BOTTOM OF POND

PROPOSED N6-K POND
 TYPICAL SECTION OF EMERGENCY SPILLWAY
 (NOT DRAWN TO SCALE)



ELEV.	STAGE	AREA	CAP.	TOT. CAP.	DESCRIPTION
6516		21.00	1.96	25.54	TOP OF EMBANKMENT
6514		19.00	1.83	21.70	
6512		17.00	1.74	19.91	EMERGENCY SPILLWAY
6510		15.00	1.50	14.7	
6508		13.00	1.36	12.19	
6506		11.00	1.21	9.62	
6504		9.00	1.08	7.32	
6502		7.00	0.95	5.29	
6500		5.00	0.84	3.50	
6498		3.00	0.72	1.94	
6496		1.00	0.60	0.60	
6495		0.00	0.57	0.00	BOTTOM OF POND