

39250S

4850
X
6990.49

69250E

6930.9
X

6934.9
X

6941.2
X

6950.0
X

6930.2
X

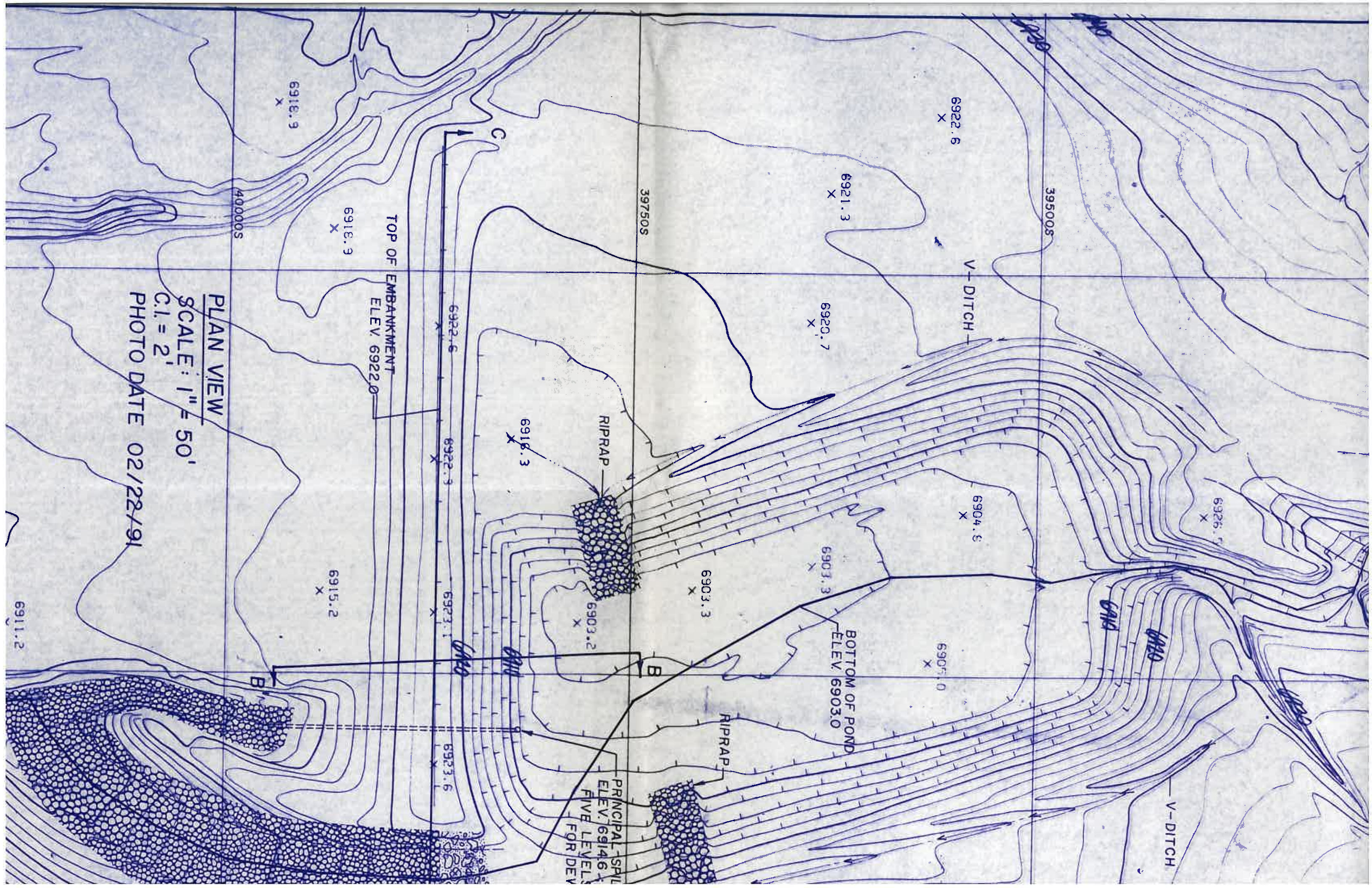
6935.5
X

6939.2
X

6941.2
X

6922

A'



PLAN VIEW

SCALE: 1" = 50'

C.I. = 2'

PHOTO DATE 02/22/91

TOP OF EMBANKMENT
ELEV. 6922.0

BOTTOM OF POND
ELEV. 6903.0

PRINCIPAL SPILL
ELEV. 6914.6
FIVE LEVELS
FOR DEV

RIPRAP

RIPRAP

V-DITCH

V-DITCH

A-A

B-B

C-C

A

B

C

6918.9
X

6918.9
X

6915.2
X

6911.2

39750S

40000S

39500S

6922.6
X

6921.3
X

6920.7
X

6918.3
X

6922.6
X

6922.9
X

6923.1
X

6923.6
X

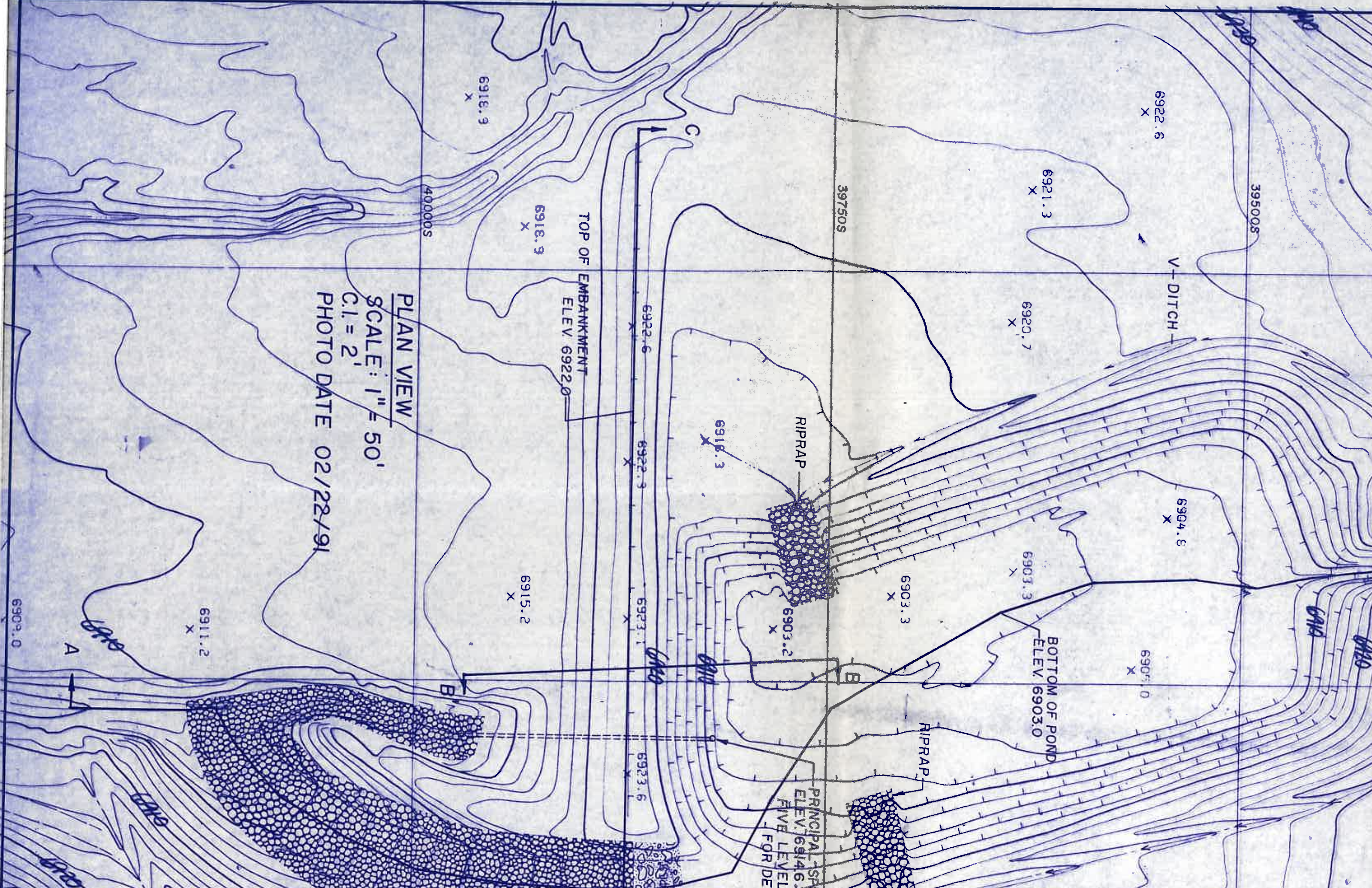
6903.3
X

6903.3
X

6904.8
X

6905.0
X

6926.7
X



PLAN VIEW
SCALE: 1" = 50'
C.I. = 2'
PHOTO DATE 02/22/91

**TOP OF EMBANKMENT
ELEV 6922.0**

**BOTTOM OF POND
ELEV 6903.0**

**PRINCIPAL SPILLWAY
ELEV. 6914.6
FIVE LEVEL
FOR DEVIATION**

V-DITCH

RIPRAP

RIPRAP

40000S

39750S

39500S

6918.9
X

6918.9
X

6922.6
X

6922.9
X

6923.1
X

6923.6
X

6921.3
X

6920.7
X

6918.3
X

6903.2
X

6903.3
X

6903.3
X

6904.8
X

6905.0
X

6911.2
X

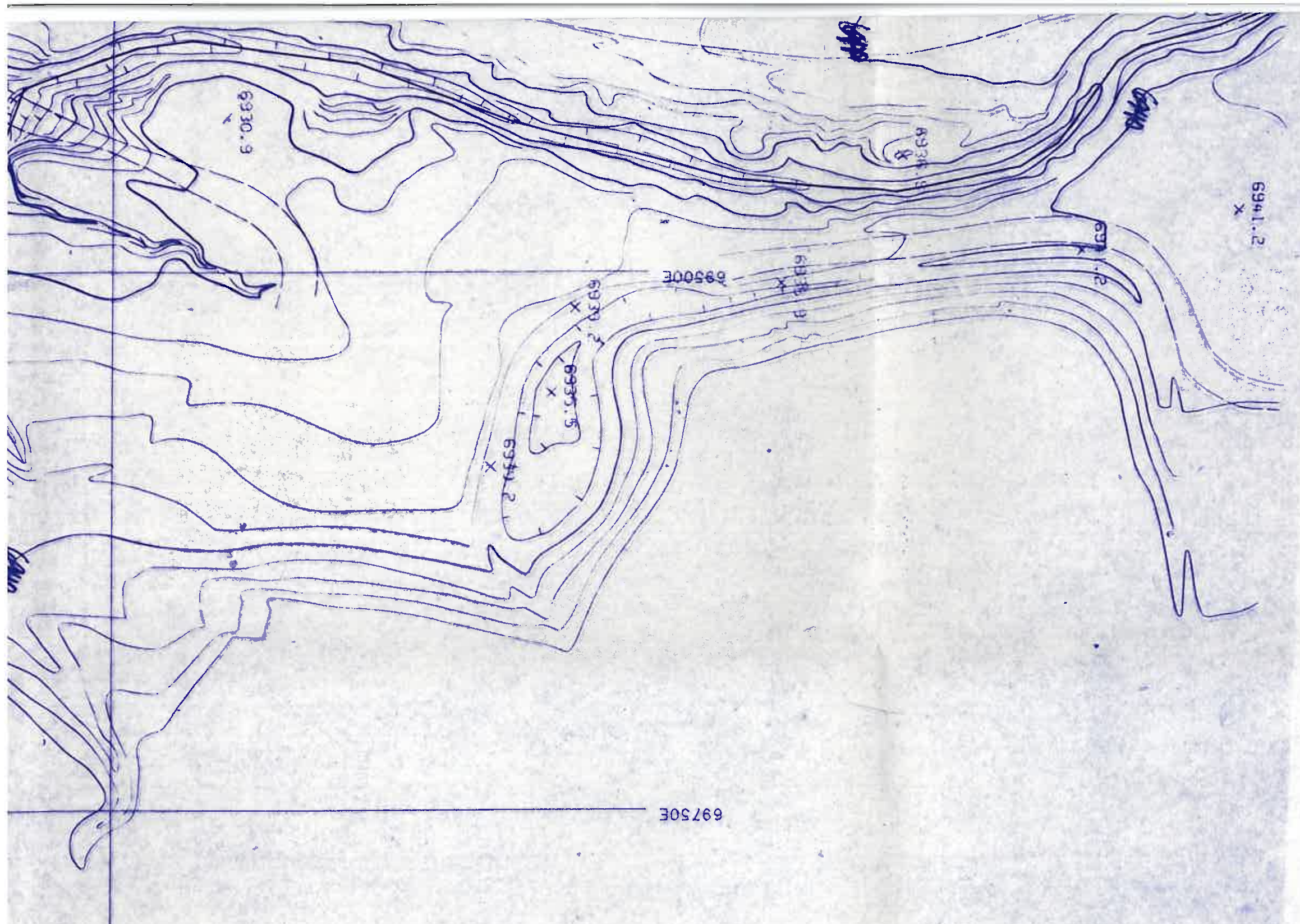
6902.0
X

A

B

B

C



6941.2
X

6934.8
X

6930.9

6930.0

6931.2
X

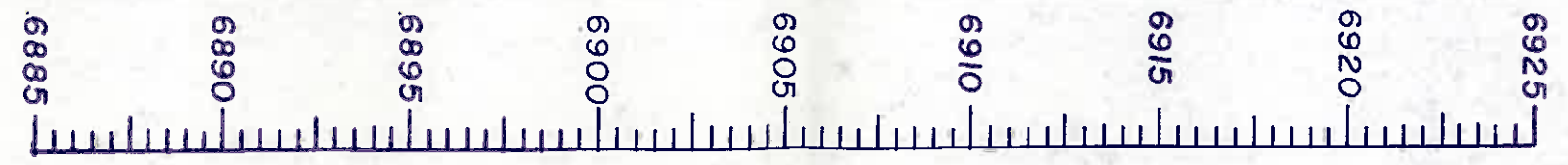
6930.0
X

6935.5
X

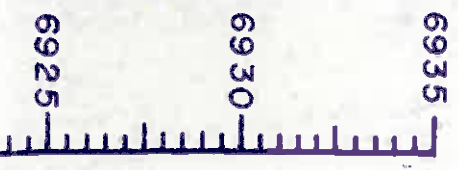
6941.2
X

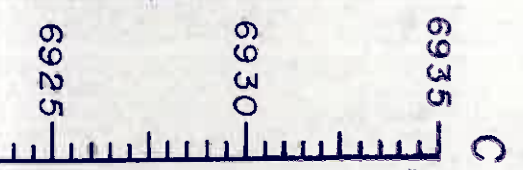
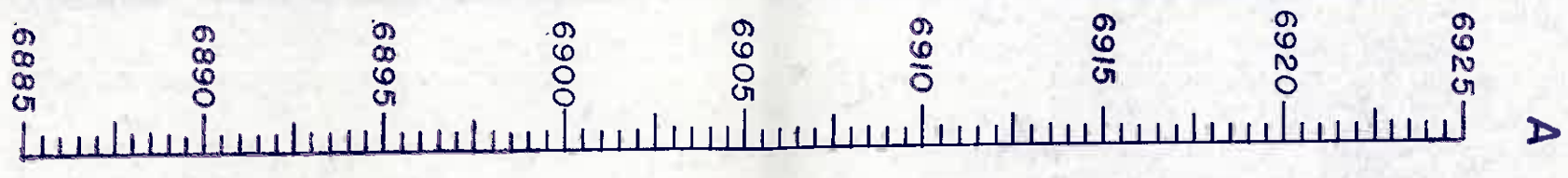
69750E

A



C

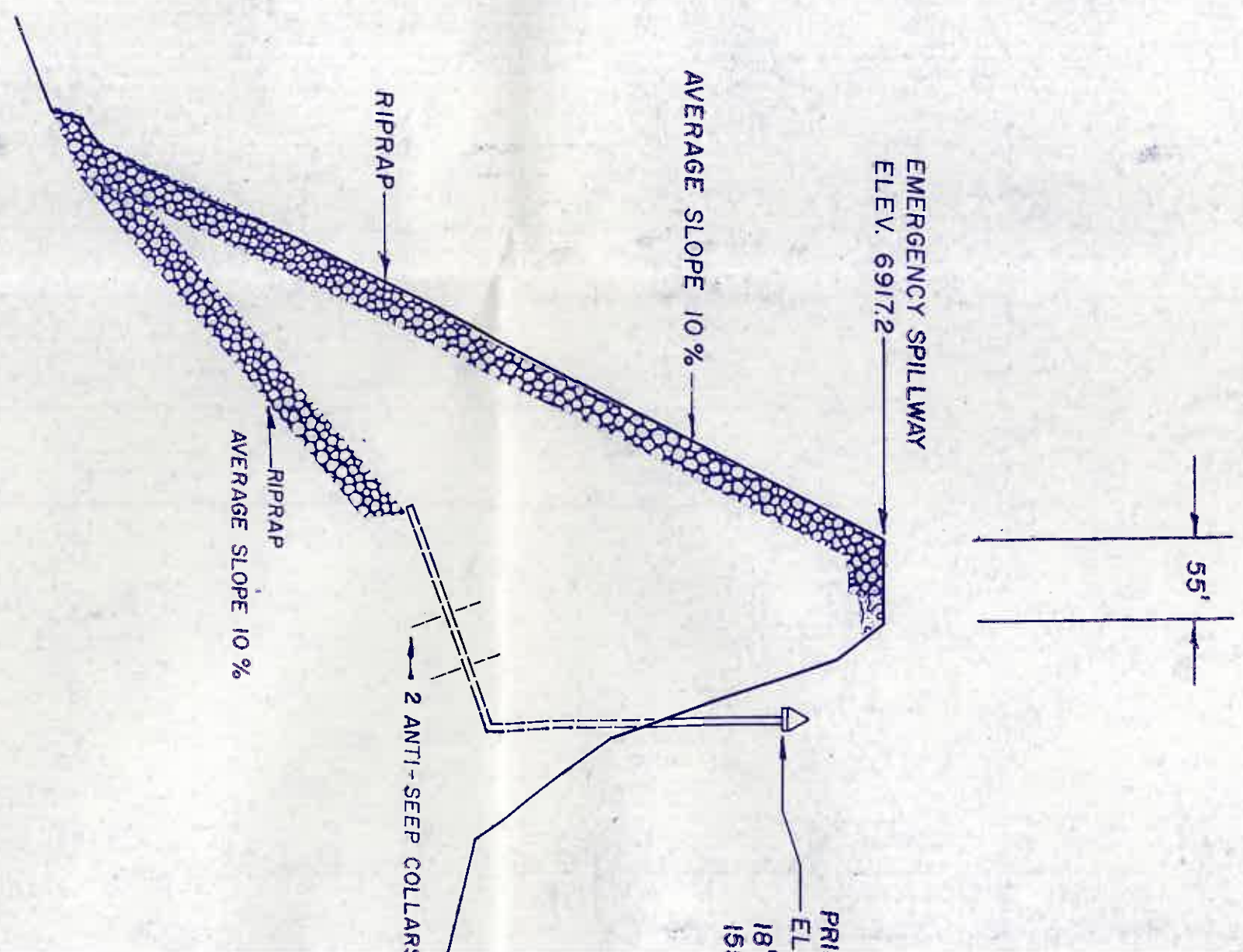




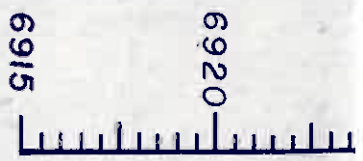
69750E

A

C

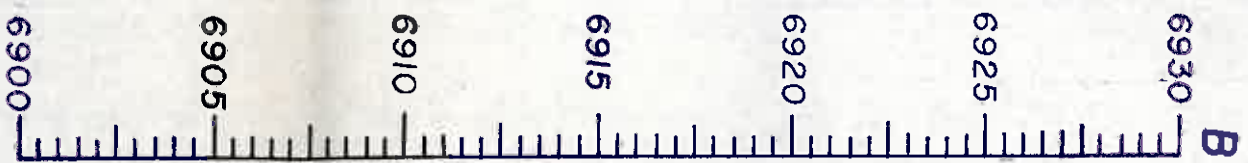


TOP OF EMBANKMENT
ELEV. 6922.0



SECTION C - C'
 VERT. SCALE: 1" = 5'
 HORIZ. SCALE: 1" = 50'

EMERGENCY SPILLWAY
 ELEV. 6917.2

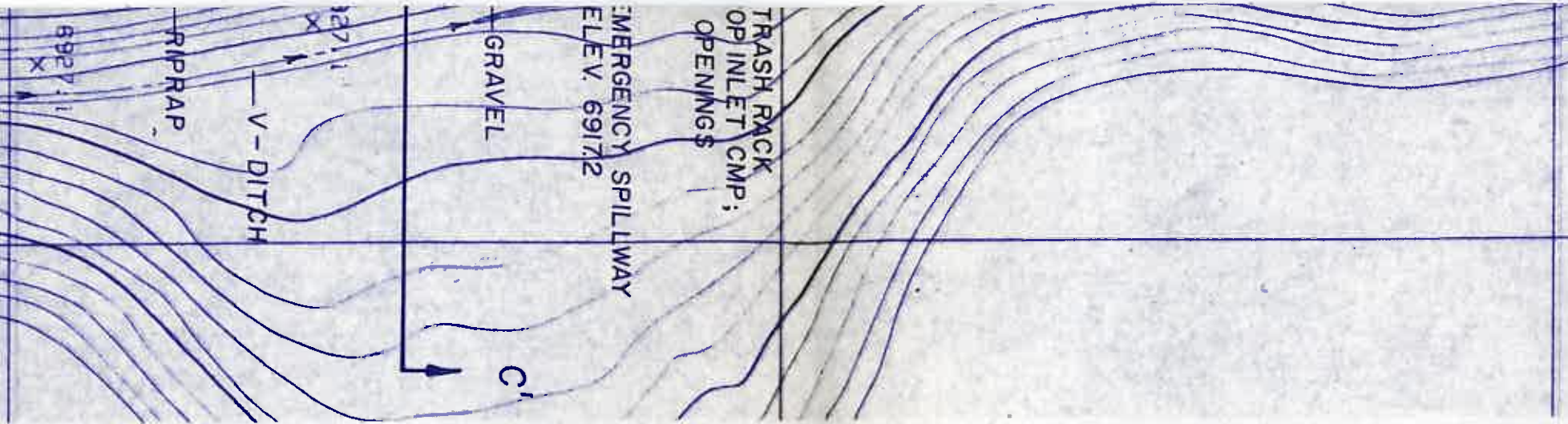
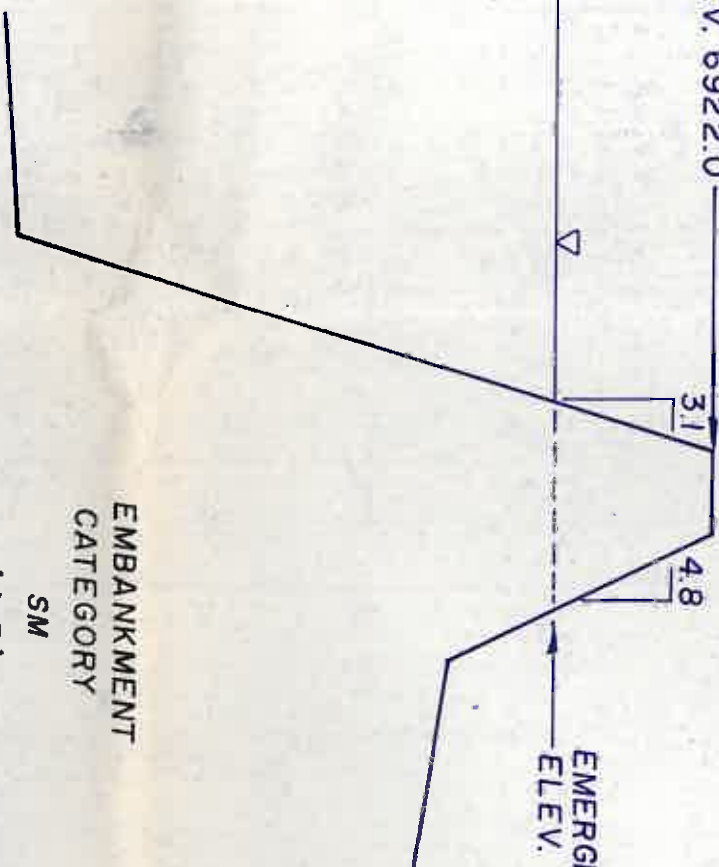
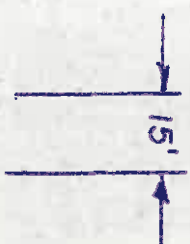


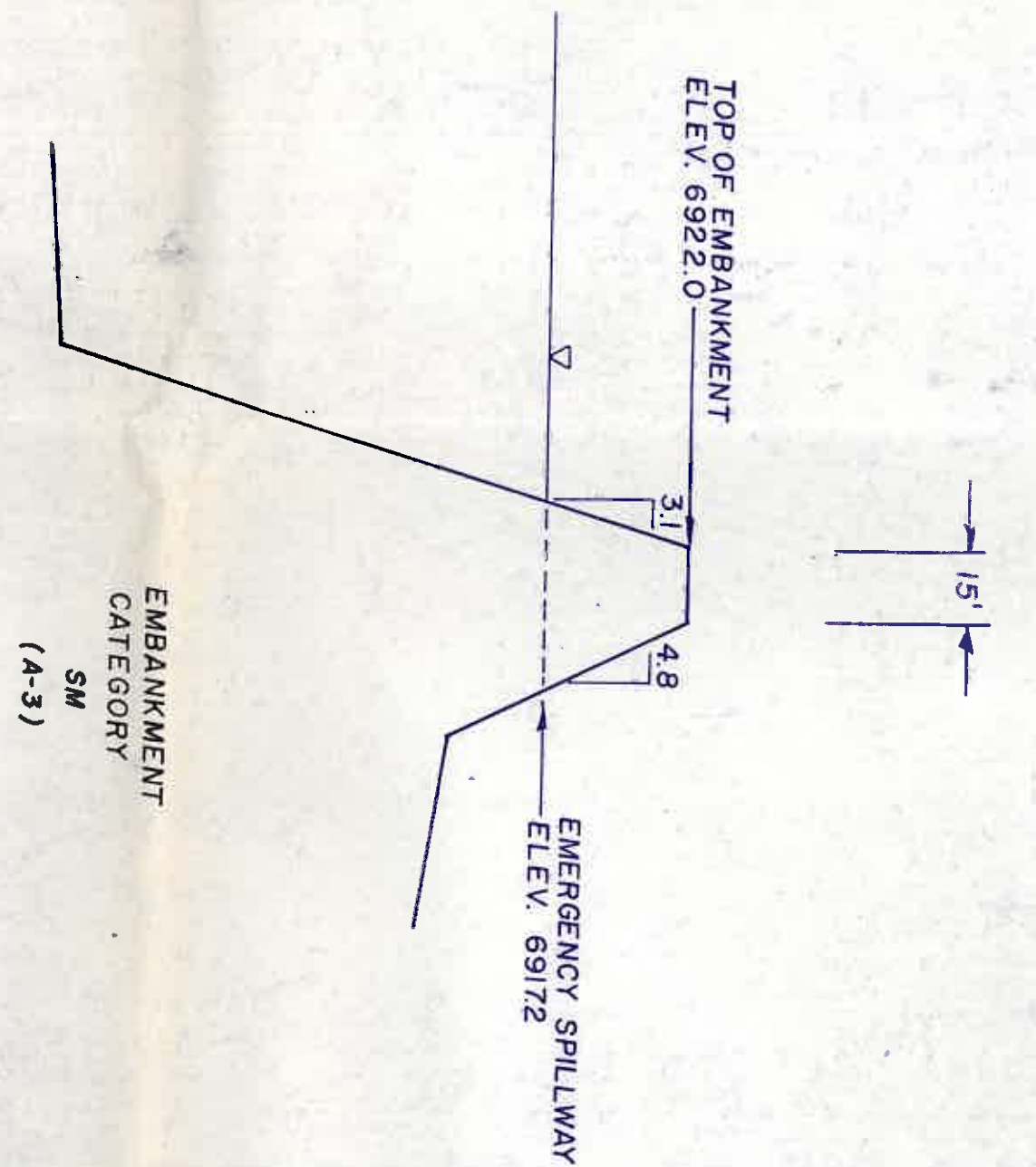
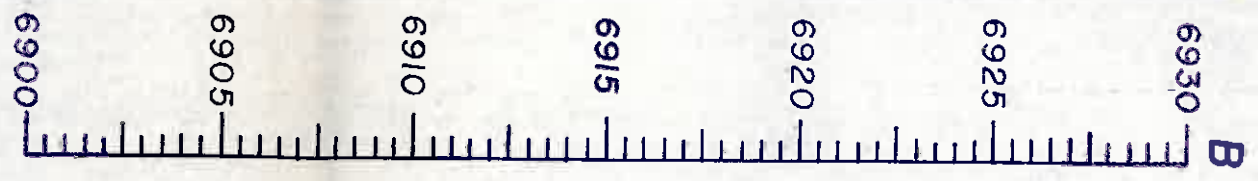
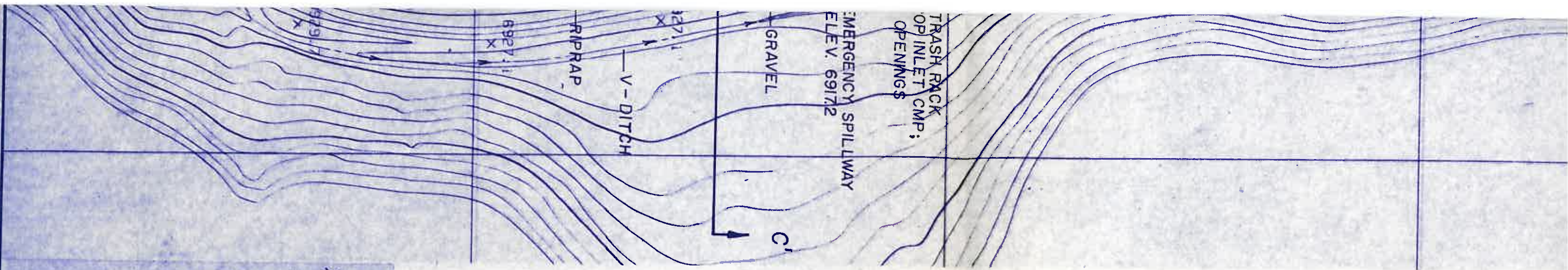
SECTION B - B'
 VERT. SCALE: 1" = 5'
 HORIZ. SCALE: 1" = 50'

EMBANKMENT
 CATEGORY
 SM
 (A-3)

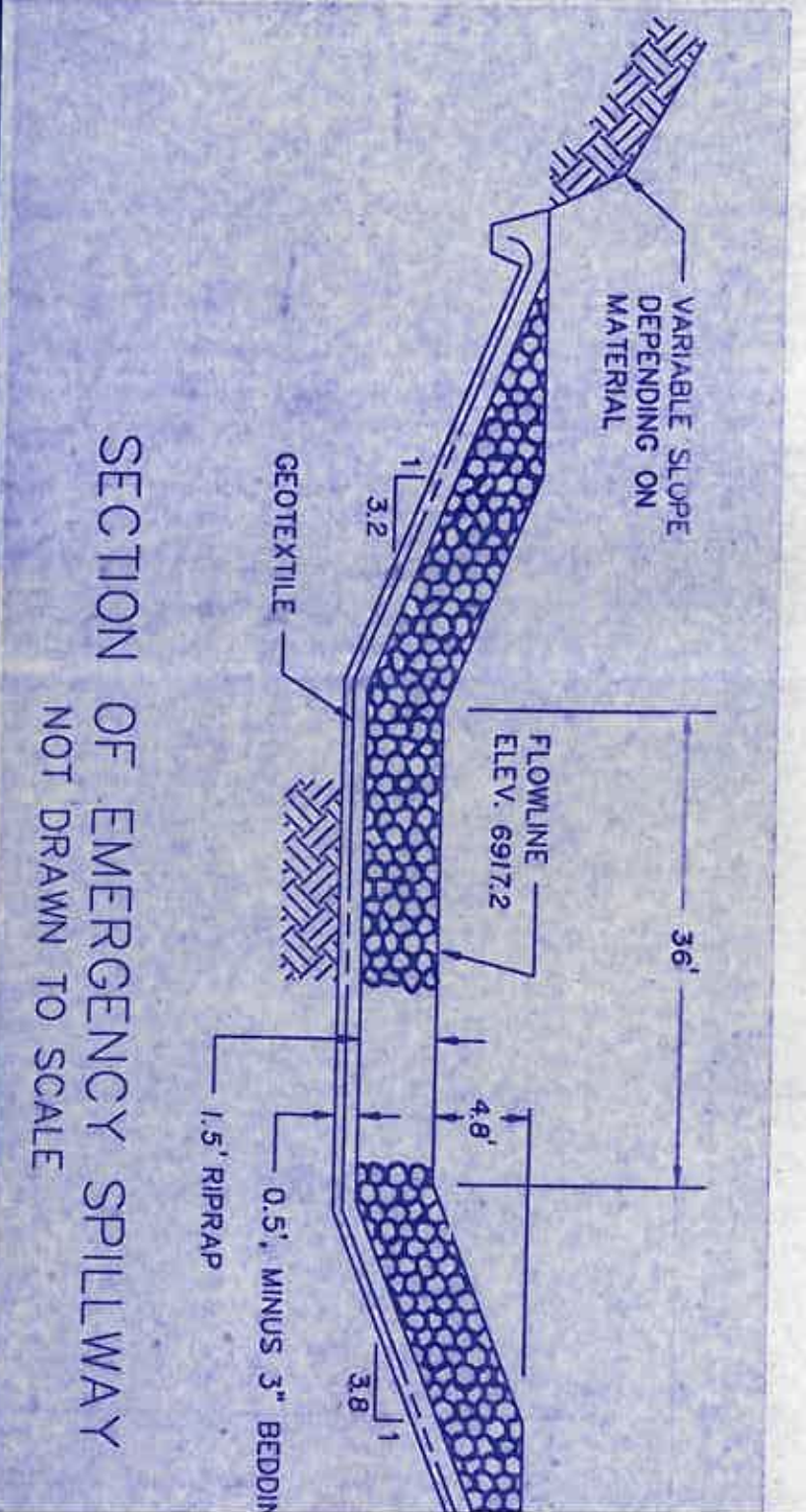
TOP OF EMBANKMENT
 ELEV. 6922.0

EMERGENCY SPILLWAY
 ELEV. 6917.2



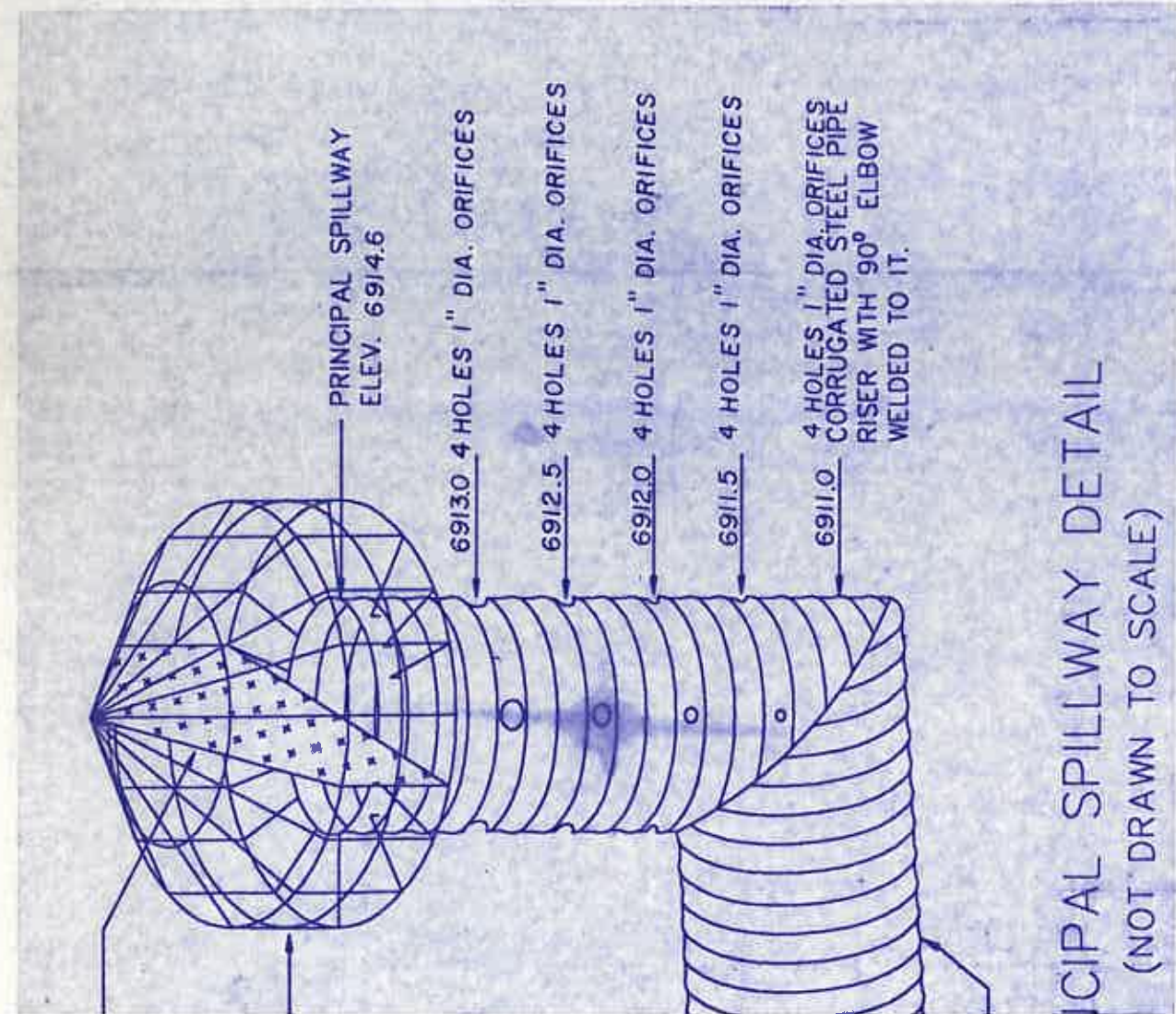


SECTION B - B'
 VERT. SCALE : 1" = 5'
 HORIZ. SCALE: 1" = 50'



SECTION OF EMERGENCY SPILLWAY
 NOT DRAWN TO SCALE

(ft-msl)	(ft)	(Acres)	Capacity (ac-ft)	Total Capacity (ac-ft)	Description
6903.0	0.0	0.00	0.00	0.00	Bottom of Pond
6904.0	1.0	0.31	0.16	0.16	
6906.0	3.0	0.91	1.22	1.38	
6908.0	5.0	1.23	2.14	3.52	
6910.0	7.0	1.47	2.70	6.22	
6911.0	8.0	1.57	1.52	7.74	1" Dia. Orifices
6911.5	8.5	1.61	0.80	8.53	1" Dia. Orifices
6912.0	9.0	1.66	0.82	9.35	1" Dia. Orifices
6912.5	9.5	1.71	0.84	10.19	1" Dia. Orifices
6913.0	10.0	1.76	0.87	11.06	1" Dia. Orifices
6914.0	11.0	1.86	1.81	12.87	
6914.6	11.6	1.93	1.14	14.00	Principal Spillway
6916.0	13.0	2.09	2.81	16.82	
6917.2	14.2	2.39	2.69	19.51	Emergency Spillway
6918.0	15.0	2.59	1.99	21.50	
6920.0	17.0	3.22	5.81	27.31	
6922.0	19.0	4.22	7.44	34.75	Top of Dam



ion Structure was constructed in accordance
ing permit and that the information contained
cribes the constructed structure to the best
elief.

Arizona P.E. #18782

Date: JUL 09 1991

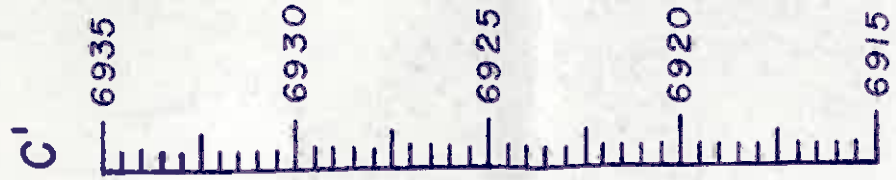
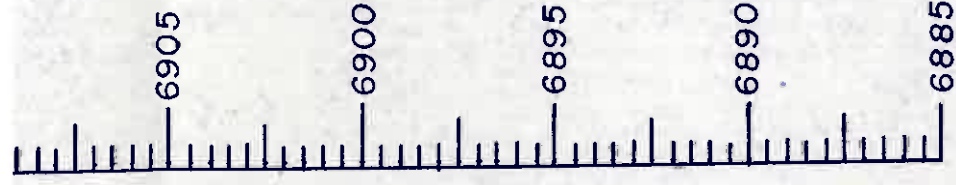
PEABODY COAL COMPANY
BLACK MESA - KAYENTA MINE

J21 - C2 POND
(AS-BUILT)

SCALE: AS SHOWN DRAWN BY: WKW

DATE: 7/9/91 DRAWING NO:

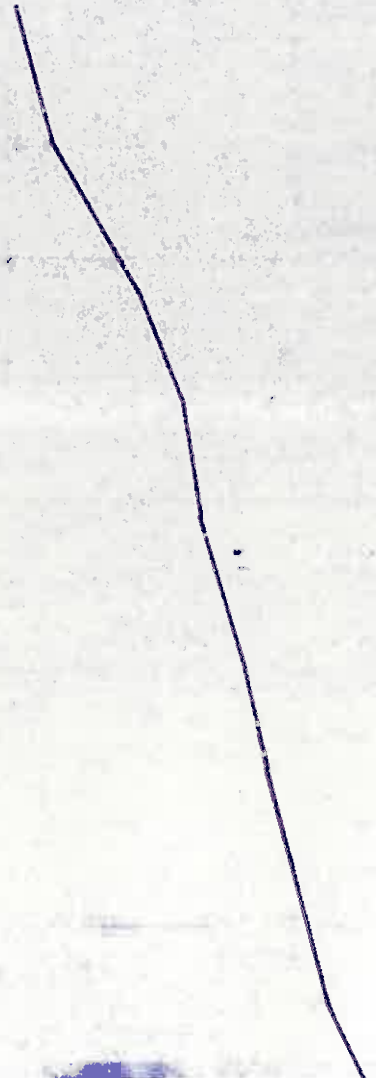
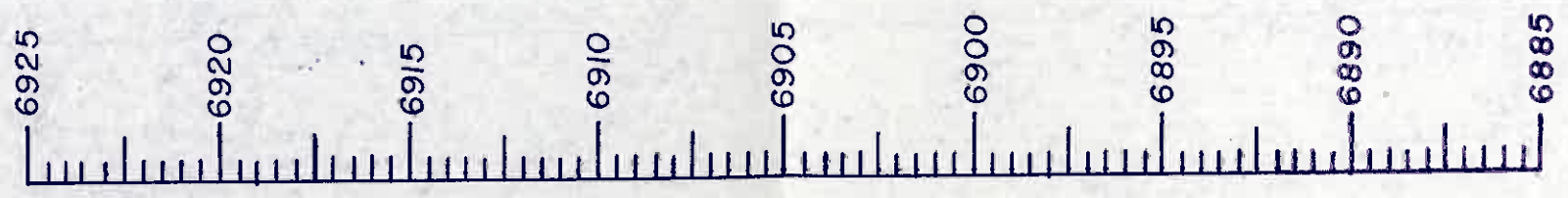
REVISION: APPROVED BY: J.G.S.



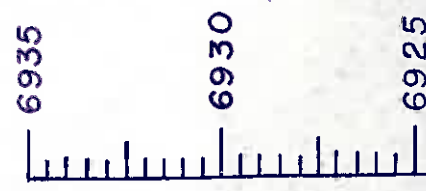
J21-C2 Pond Data

Elevation (ft-msl)	Stage (ft)	Area (Acres)	Capacity (ac-ft)	Total Capacity (ac-ft)	Description
6903.0	0.0	0.00	0.00	0.00	Bottom of Pond
6904.0	1.0	0.31	0.16	0.16	
6906.0	3.0	0.91	1.22	1.38	
6908.0	5.0	1.23	2.14	3.52	
6910.0	7.0	1.47	2.70	6.22	
6911.0	8.0	1.57	1.52	7.74	1" Dia. Orifices
6911.5	8.5	1.61	0.80	8.53	1" Dia. Orifices
6912.0	9.0	1.66	0.82	9.35	1" Dia. Orifices
6912.5	9.5	1.71	0.84	10.19	1" Dia. Orifices
6913.0	10.0	1.76	0.87	11.06	1" Dia. Orifices
6914.0	11.0	1.86	1.81	12.87	
6914.6	11.6	1.93	1.14	14.00	Principal Spillway
6916.0	13.0	2.09	2.81	16.82	
6917.2	14.2	2.39	2.69	19.51	Emergency Spillway
6918.0	15.0	2.59	1.99	21.50	
6920.0	17.0	3.22	5.81	27.31	

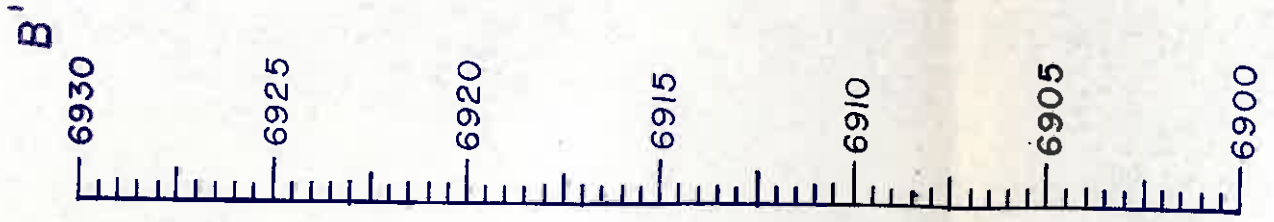
A'



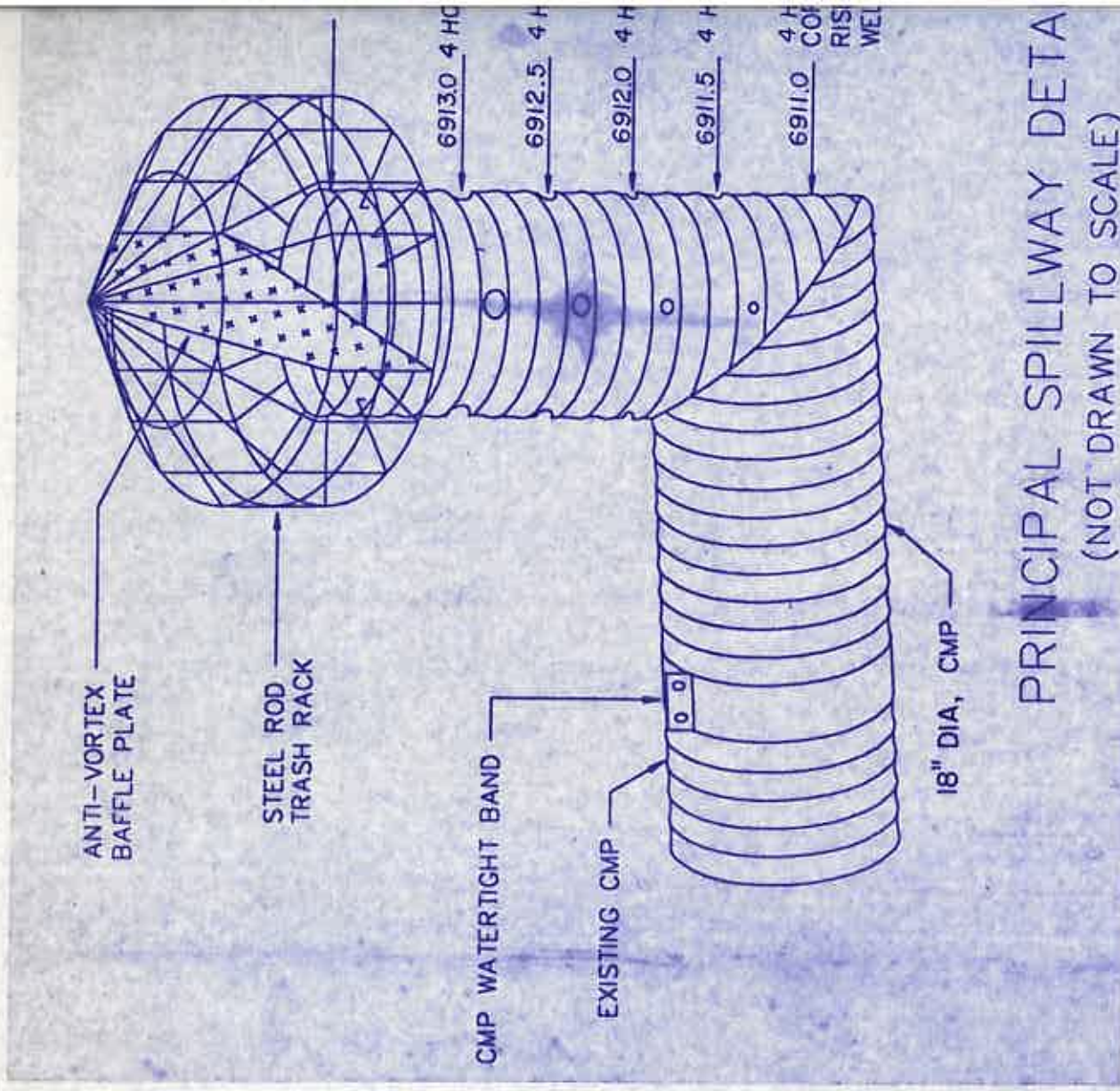
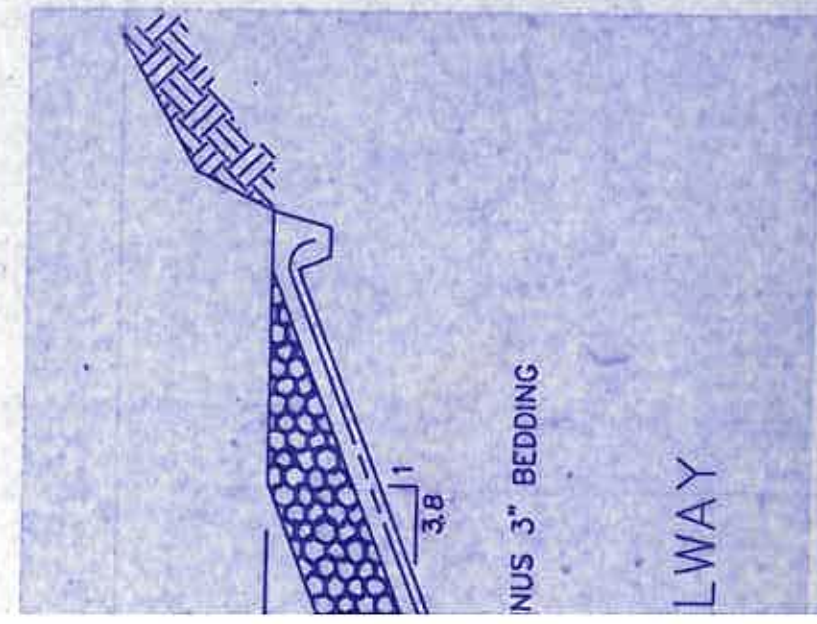
C'



Elevation (ft-msl)
6903.0
6904.0
6906.0
6908.0
6910.0
6911.0
6911.5
6912.0
6912.5
6913.0
6914.0
6914.6
6916.0
6917.2
6918.0
6920.0
6922.0



SPILLWAY
17.2



I certify this Siltation Structure was constructed in accordance with the approved mining permit and that the information herein accurately describes the constructed structure to the best of my knowledge and belief.

19782
James G. Schlenker
Senior Engineer
Peabody Coal Company
Arizona P.E. #18

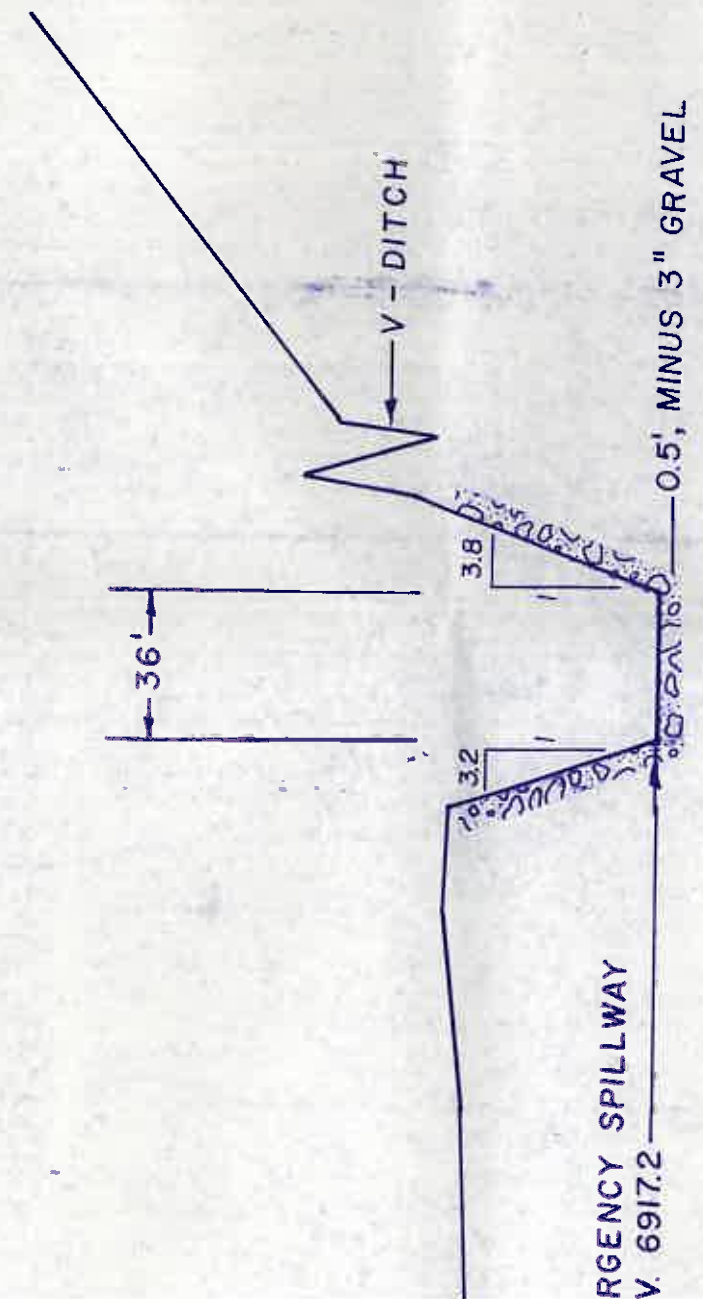
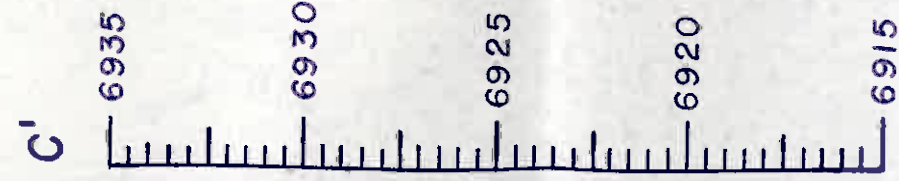
Date: JUL 09 199

- SEEP COLLARS

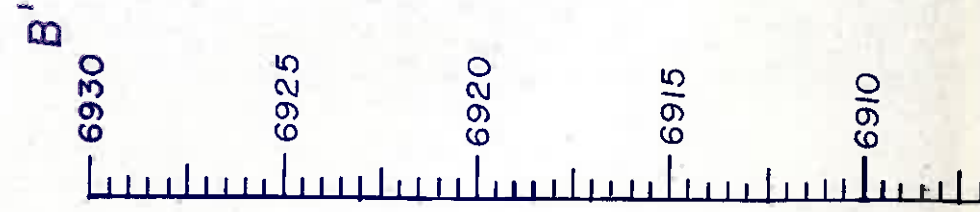
SECTION A-A'

VERT. SCALE: 1" = 5'

HORIZ. SCALE: 1" = 100'



Elevation (ft-msl)
6903.0
6904.0
6906.0
6908.0
6910.0
6911.0
6911.5
6912.0
6912.5
6913.0
6914.0
6914.6
6916.0
6917.2
6918.0
6920.0
6922.0



SPILLWAY

PRINCIPAL SPILLWAY W/ TRASH RACK
ELEV. 6914.6

18" DIA. DROP INLET CMP
155' LONG, 1.6% SLOPE

BOTTOM OF POND
ELEV. 6903.0

SEEP COLLARS

SECTION A-A'
VERT. SCALE: 1" = 5'
HORIZ. SCALE: 1" = 100'

