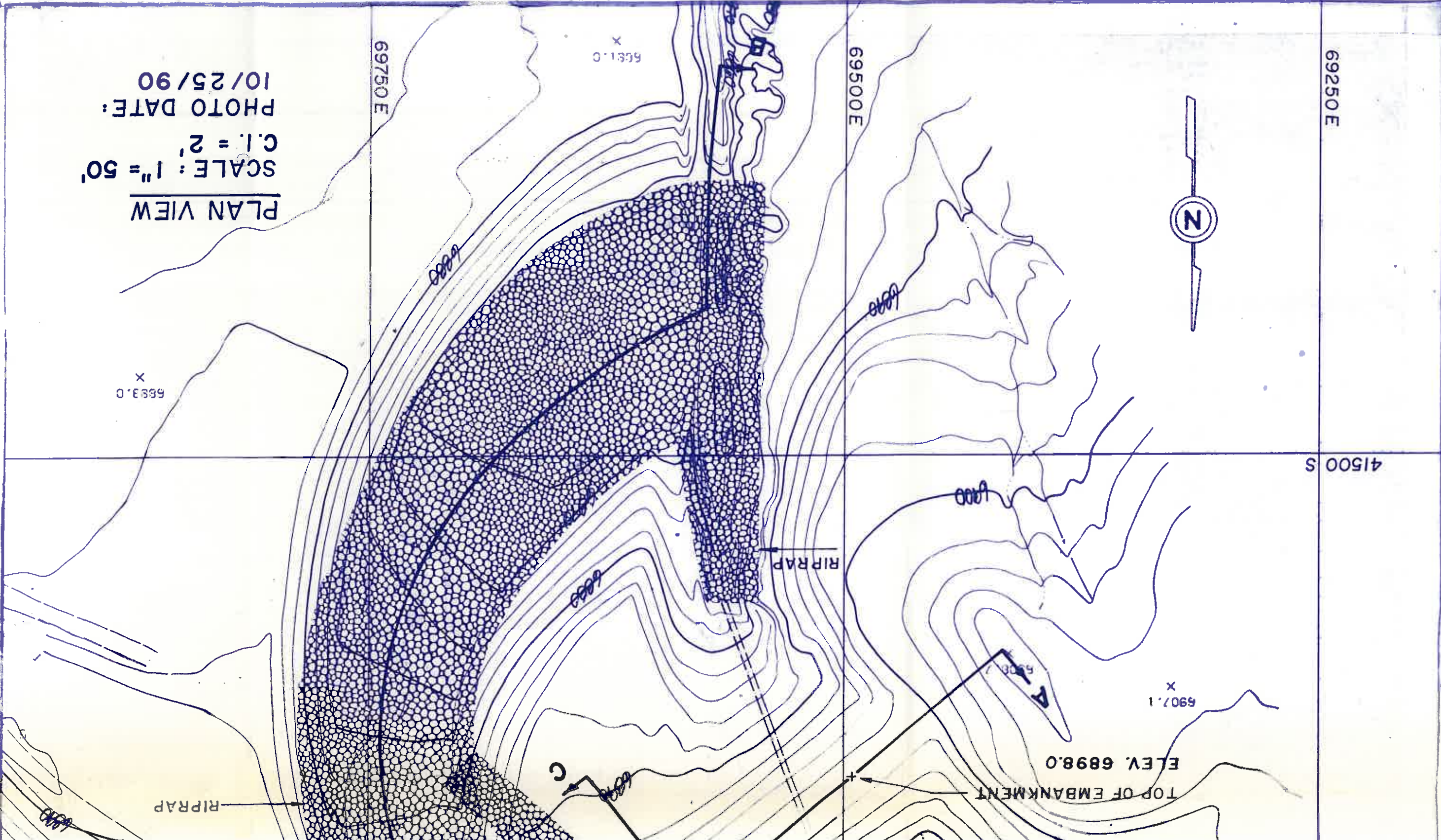


PLAN VIEW
SCALE: 1" = 50'
C.I. = 2'
PHOTO DATE: 10/25/90



69250E

69500E

69750E

41500 S

X
6551.0

X
6533.0

X
6907.1

ELEV. 6898.0

TOP OF EMBANKMENT

RIPRAP

RIPRAP

C

A

CMP

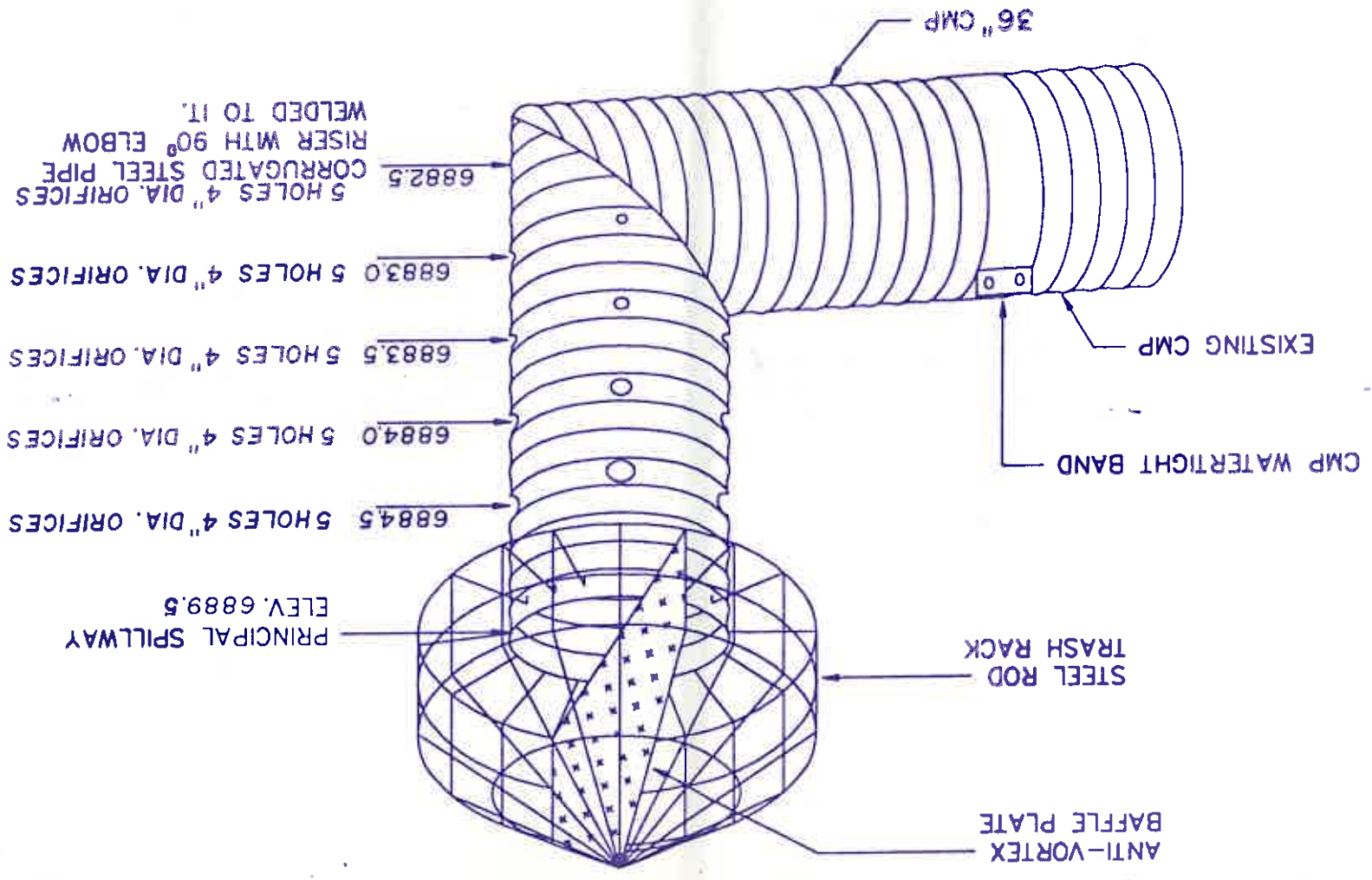
REVISION	APPROVED BY:
DATE: 7/9/91	DR/
SCALE: AS SHOWN	DR/
J21-C P (AS-BUILT)	
BLACK MESA - KA	
PEABODY COAL	

I certify this Siltation Structure was constructed in accordance with the approved mining permit and that the information contained herein fully describes the constructed structure to the best of my knowledge and belief.

James G. Schenck
Professional Engineer
No. 10782
Arizona State Board of Engineers and Architects

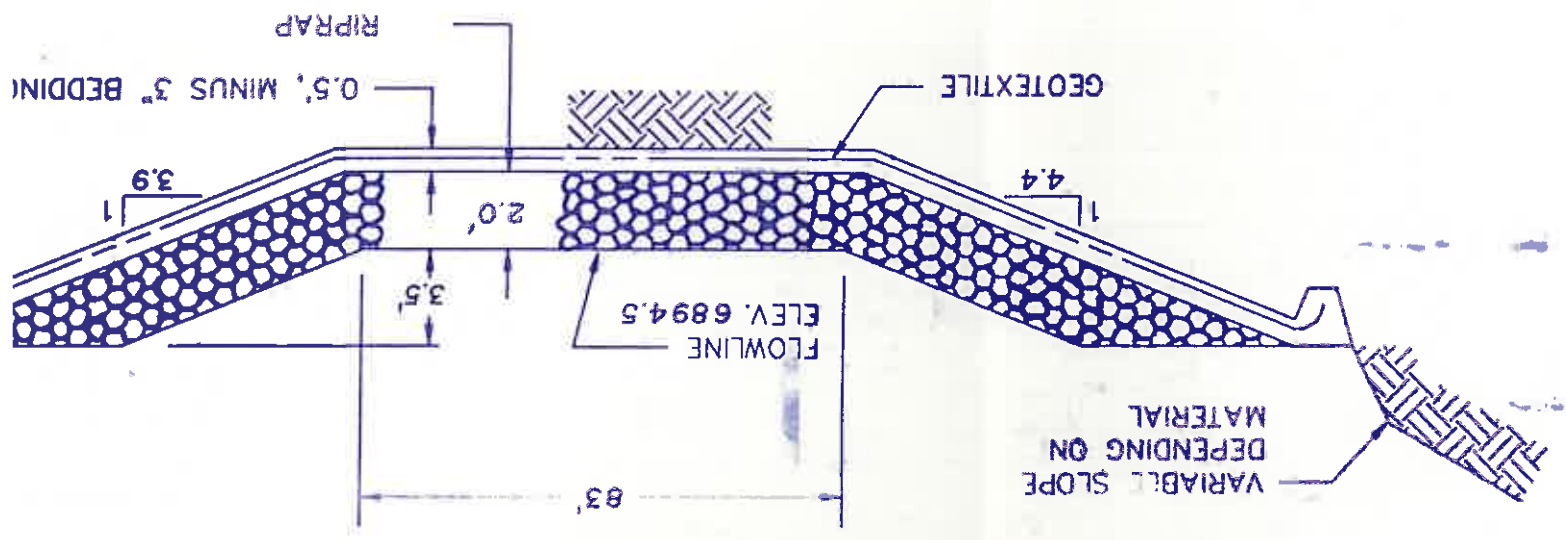
Date: JUL 09 1991
Arizona P.E. #18782

PRINCIPAL SPILLWAY DETAIL
(NOT DRAWN TO SCALE)



SECTION C-C
VERT. SCALE: 1" = 5'
HORIZ. SCALE: 1" = 50'

SECTION OF EMERGENCY SPILLWAY
NOT DRAWN TO SCALE



6889.5	10.1	1.66	2.33	9.29	Principal Spillw
6890.0	10.6	1.74	0.85	10.14	
6892.0	12.6	2.06	3.80	13.94	
6894.0	14.6	2.52	4.58	18.52	
6894.5	15.1	2.63	1.29	19.81	Emergency Spillw
6896.0	16.6	2.99	4.22	24.02	
6898.0	18.6	3.56	6.55	30.57	Top of Dam

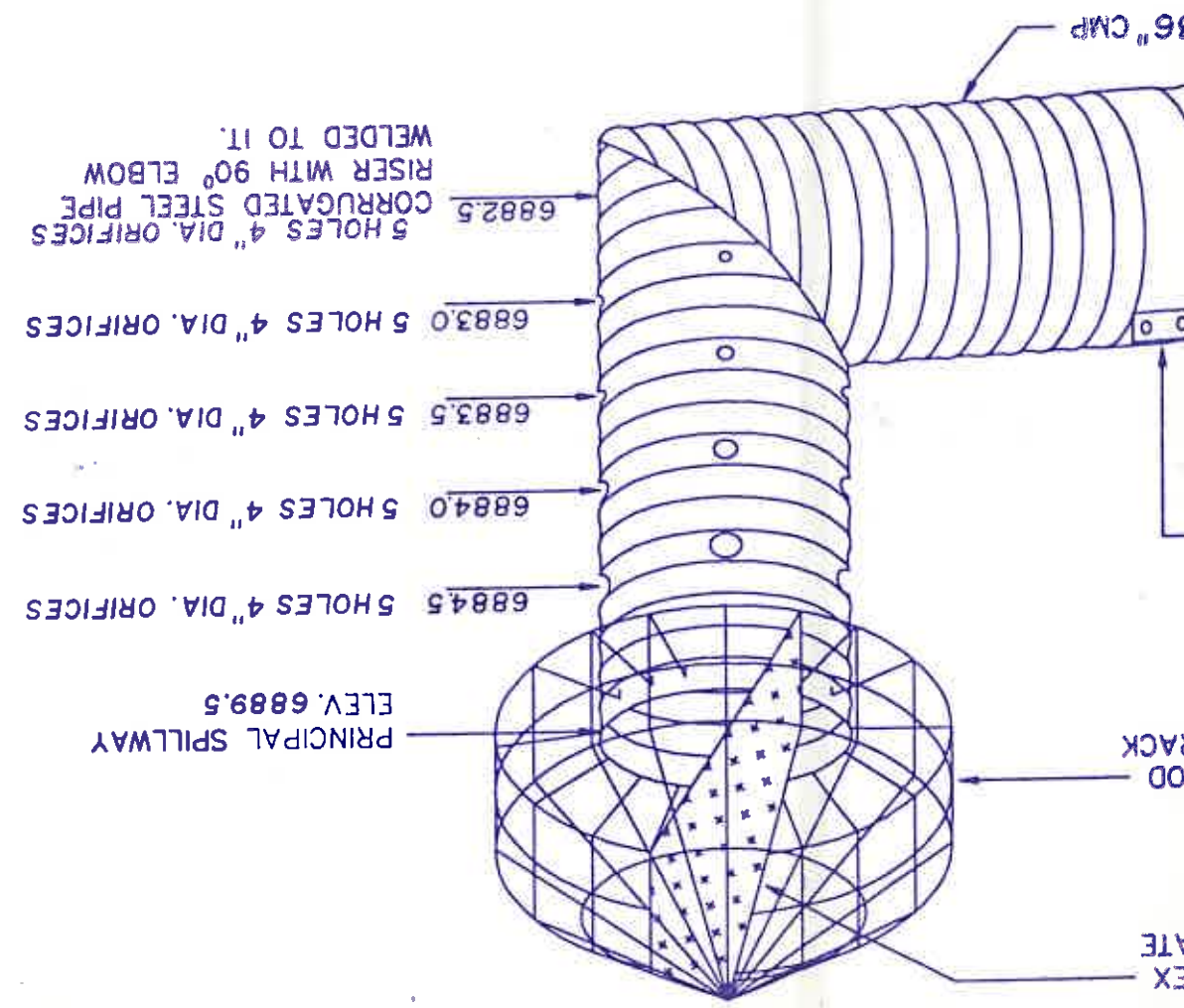
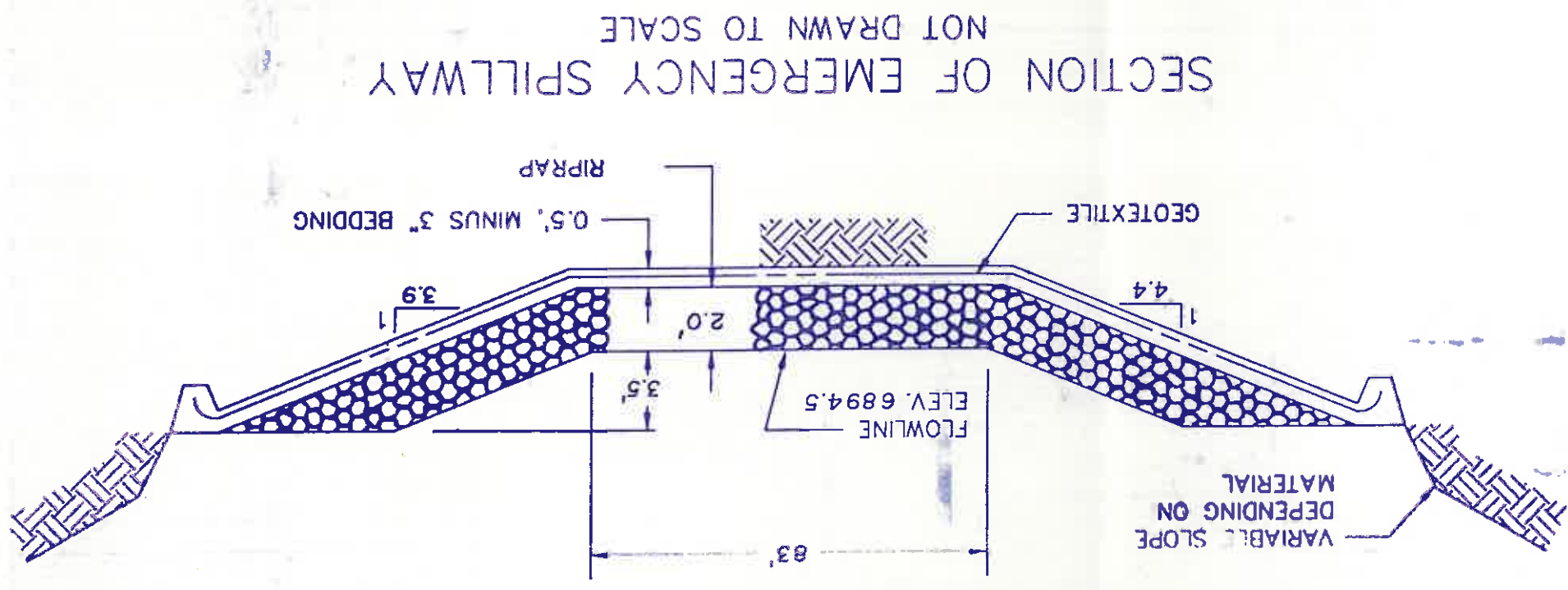
PEABODY COAL COMPANY		BLACK MESA - KAYENTA MINE	
J21-C POND (AS-BUILT)			
SCALE: AS SHOWN		DRAWN BY: WKW	
DATE: 7/9/91		DRAWING NO:	
REVISION:		APPROVED BY: J.G.S.	

I certify this Siltation Structure was constructed in accordance with the approved mining permit and that the information contained herein fully describes the constructed structure to the best of my knowledge, skill and belief.

JAMES GARY
18782
Professional Engineer
Arizona State Board of Engineers and Architects

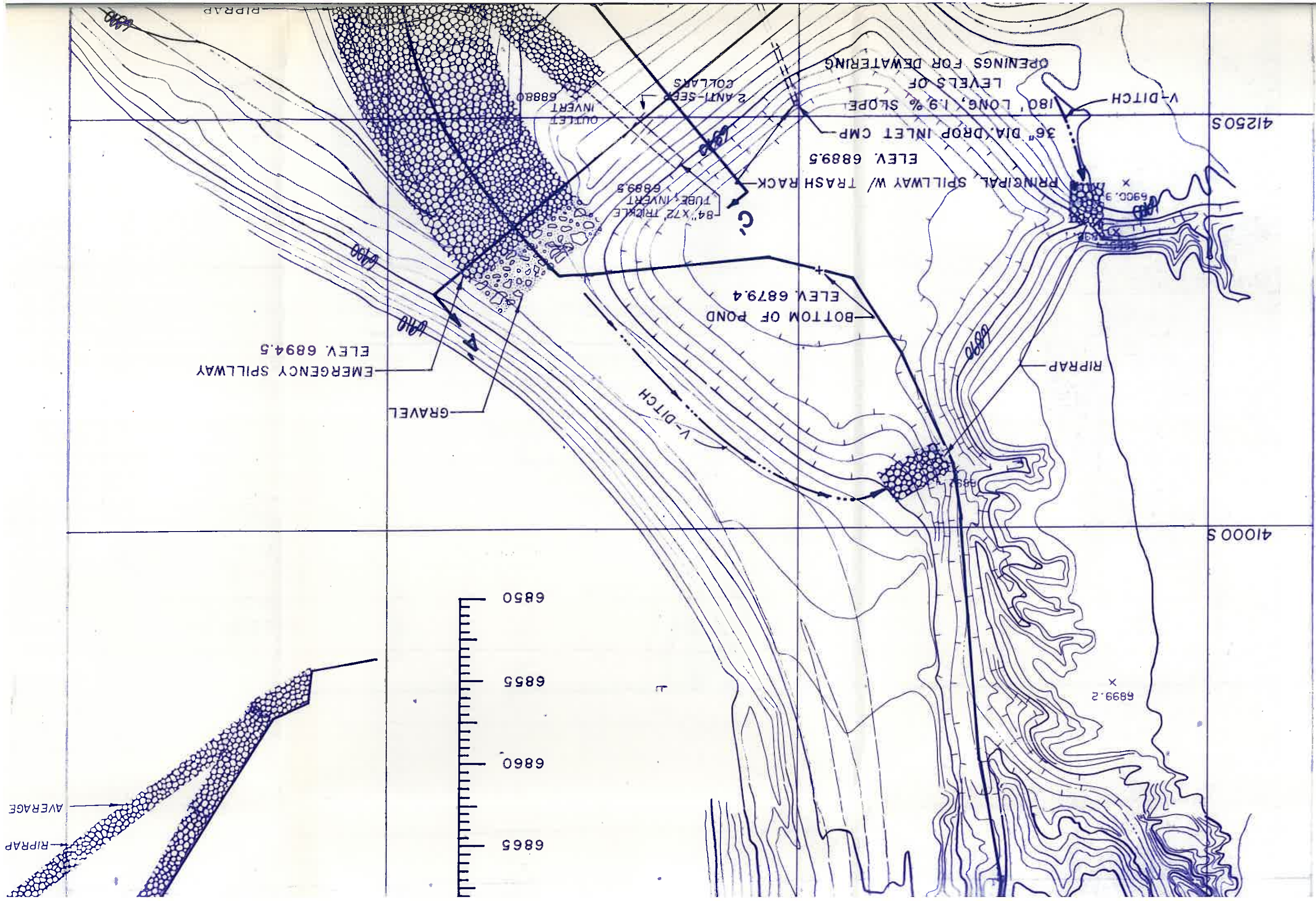
Date: **JUL 09 1991**
Arizona P.E. #18782

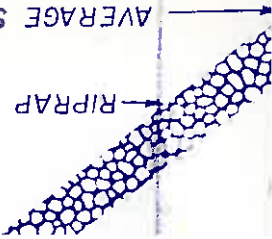
PRINCIPAL SPILLWAY DETAIL
(NOT DRAWN TO SCALE)



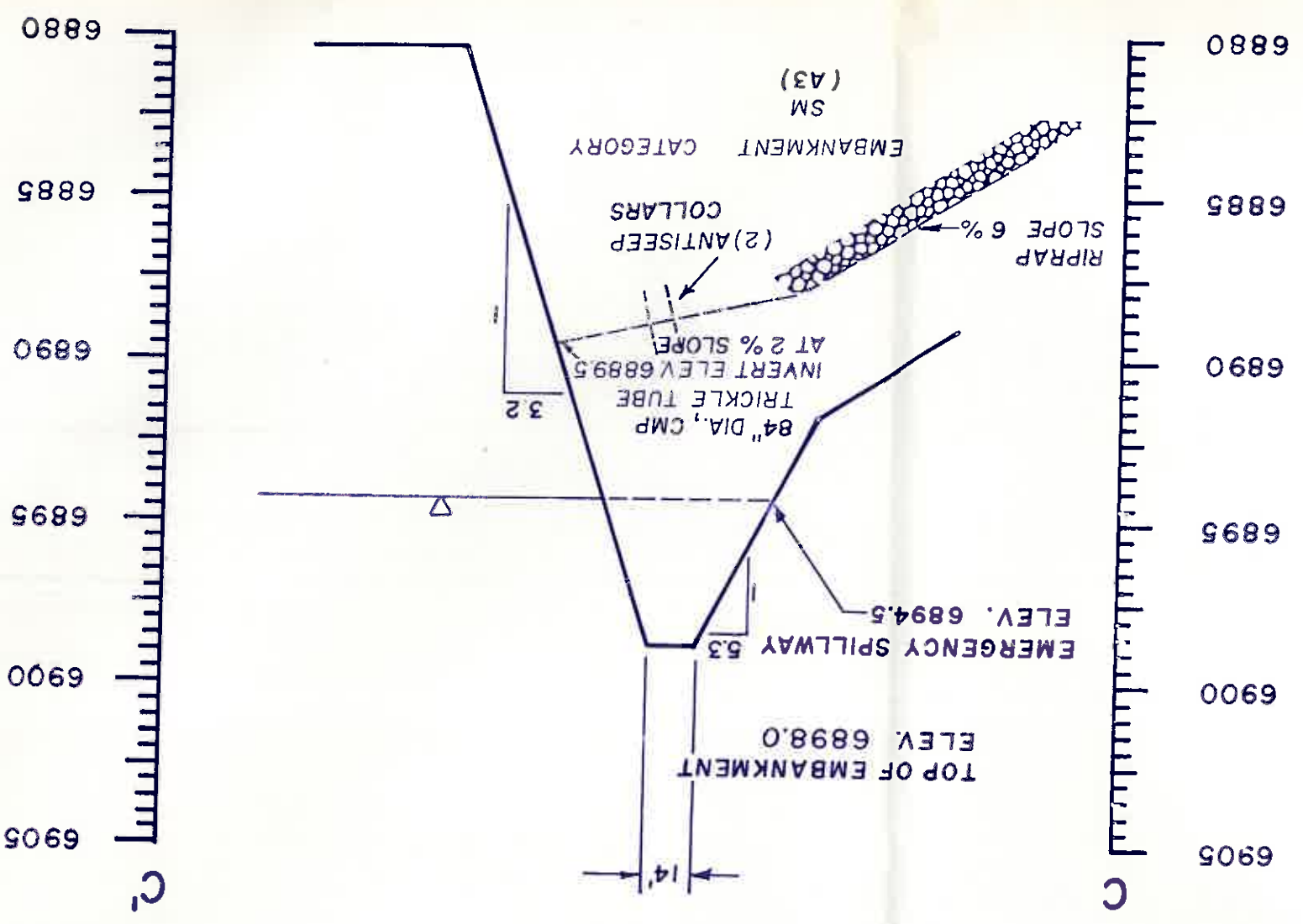
6889.5	10.1	1.66	2.33	9.29	Principal Spillway
6890.0	10.6	1.74	0.85	10.14	
6892.0	12.6	2.06	3.80	13.94	
6894.0	14.6	2.52	4.58	18.52	
6894.5	15.1	2.63	1.29	19.81	Emergency Spillway
6896.0	16.6	2.99	4.22	24.02	
6898.0	18.6	3.56	6.55	30.57	Top of Dam

SECTION C-C
VERT. SCALE: 1" = 5'
HORIZ. SCALE: 1" = 50'





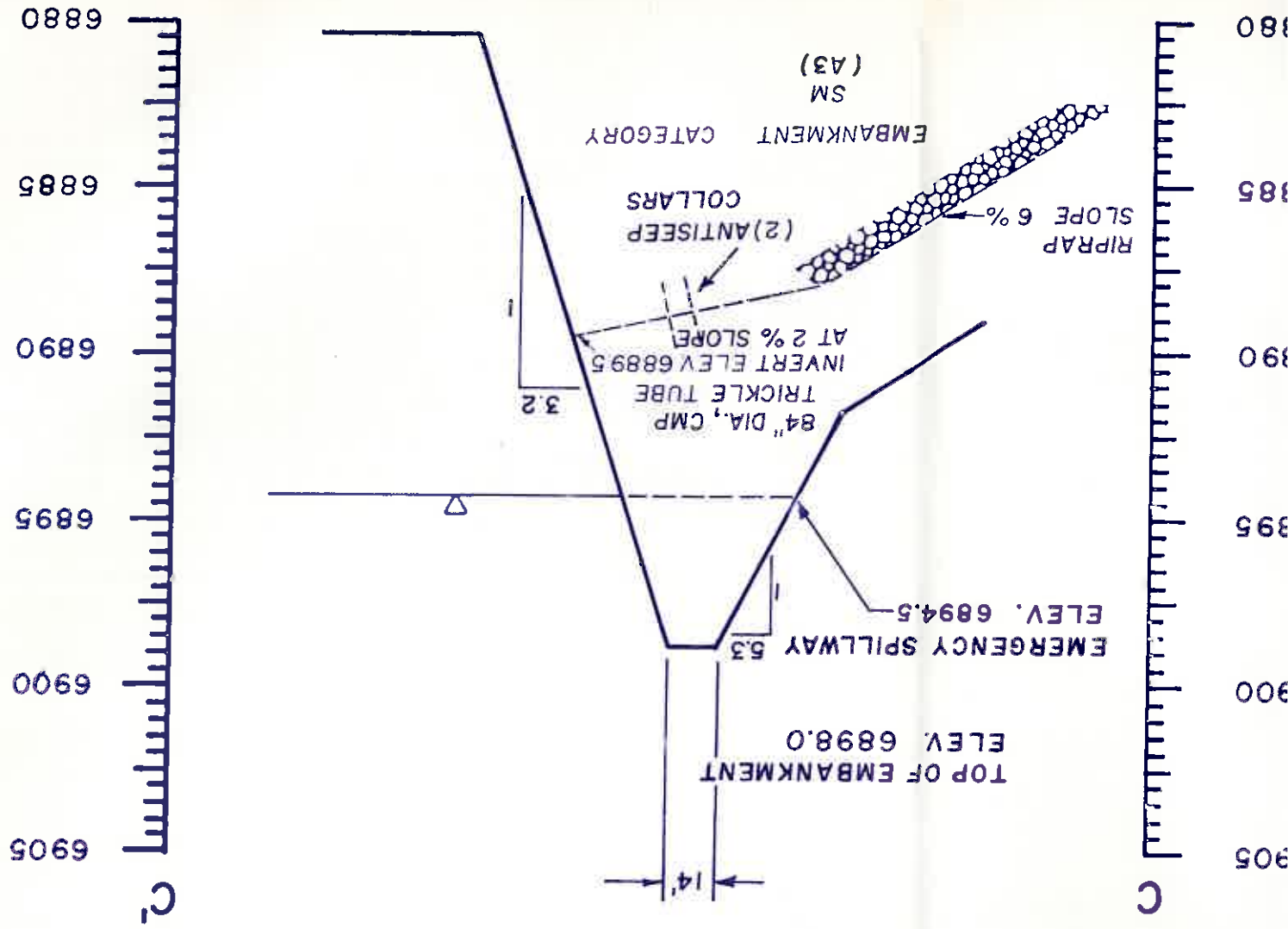
SECTION B-B'
 VERT. SCALE: 1" = 5'
 HORIZ. SCALE: 1" = 100'



J21-C Pond Data

Bottom of	6979.4	6882.0	6882.5	6883.0	6883.5	6884.0	6884.5	6886.0	6888.0	6889.5
Descript.				4" Dia. Or	4" Dia. Or	4" Dia. Or	4" Dia. Or	4" Dia. Or	4" Dia. Or	4" Dia. Or
Total Capacity (ac-ft)	0.00	0.72	0.31	1.02	1.37	1.77	2.22	2.71	4.34	6.96
Capacity (ac-ft)	0.00	0.72	0.66	0.75	0.85	0.94	1.00	1.18	1.44	1.66
Area (Acres)	0.00	0.55	0.66	0.75	0.85	0.94	1.00	1.18	1.44	1.66
Stage (ft)	0.0	2.6	3.1	3.6	4.1	4.6	5.1	6.6	8.6	10.1

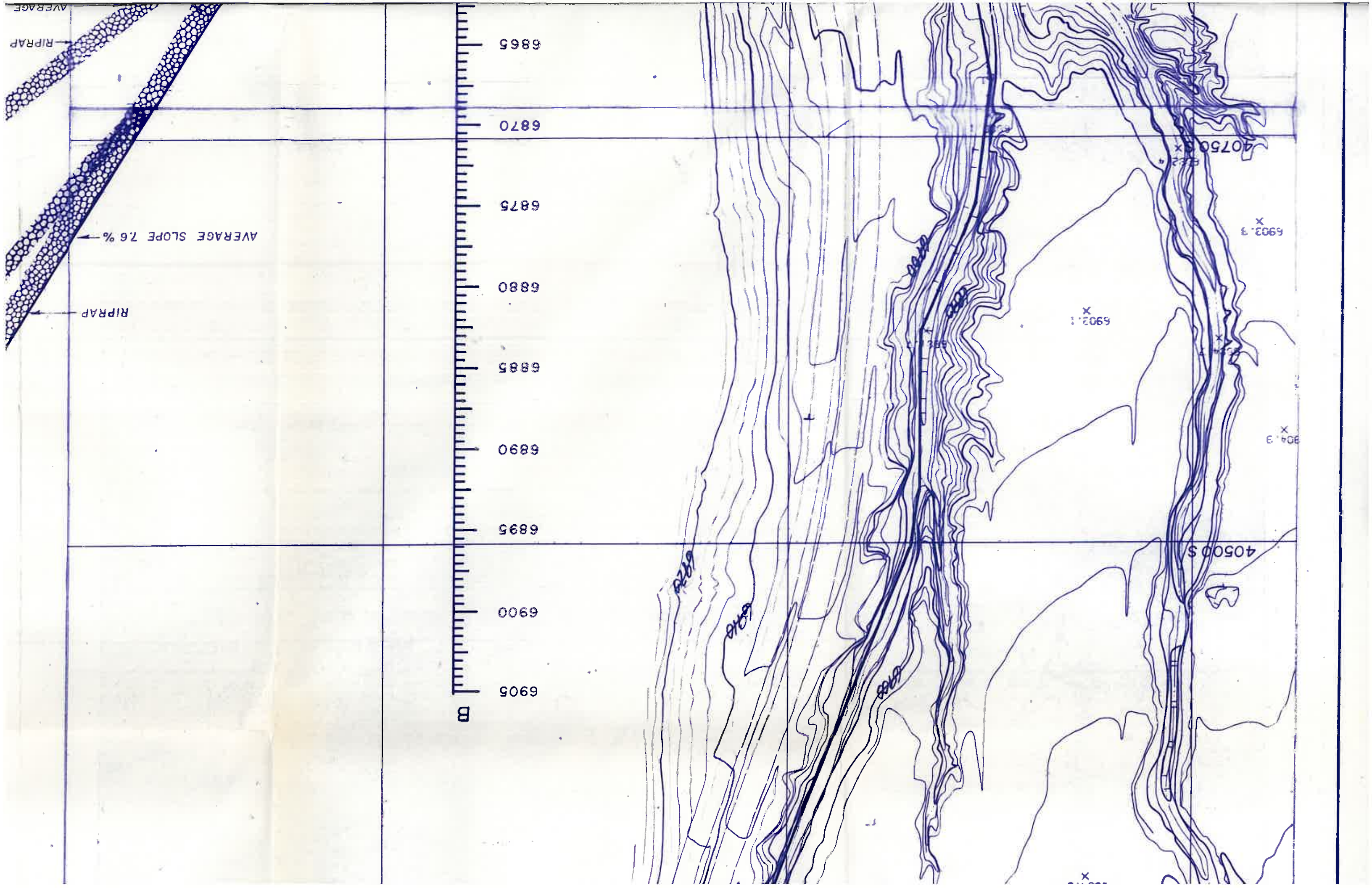
SECTION B-B'
 VERT. SCALE: 1" = 5'
 HORIZ. SCALE: 1" = 100'



J21-C Pond Data

Elevation (ft-msl)	Stage (ft)	Area (Acres)	Capacity (ac-ft)	Total Capacity (ac-ft)	Description
6879.4	0.0	0.00	0.00	0.00	Bottom of Pond
6882.0	2.6	0.55	0.72	0.72	
6882.5	3.1	0.66	0.31	1.02	4" Dia. Orifices
6883.0	3.6	0.75	0.35	1.37	4" Dia. Orifices
6883.5	4.1	0.85	0.40	1.77	4" Dia. Orifices
6884.0	4.6	0.94	0.45	2.22	4" Dia. Orifices
6884.5	5.1	1.00	0.49	2.71	4" Dia. Orifices
6886.0	6.6	1.18	1.64	4.34	
6888.0	8.6	1.44	2.62	6.96	
6889.5	10.1	1.66	2.33	9.29	Principal Spillway





6865
6870
6875
6880
6885
6890
6895
6900
6905

AVERAGE SLOPE 7.6 %

RIPRAP

RIPRAP

AVERAGE

40750 S X

6903.3 X

6903.1 X

6904.3 X

40500 S

6875

6880

6885

X

6890

TRICKLE TUBE ELEV. 6889.5

SECTION A-A'
VERT. SCALE: 1" = 5'
HORIZ. SCALE: 1" = 50'



ELEV. 6889.5

6890



56'

EMERGENCY SPILLWAY
ELEV. 6894.5

PRINCIPAL SPILLWAY W/ TRASH RACK
ELEV. 6889.5

36" DIA. DROP INLET CMP
180' LONG, 1.9%

BOTTOM OF POND
ELEV. 6879.4

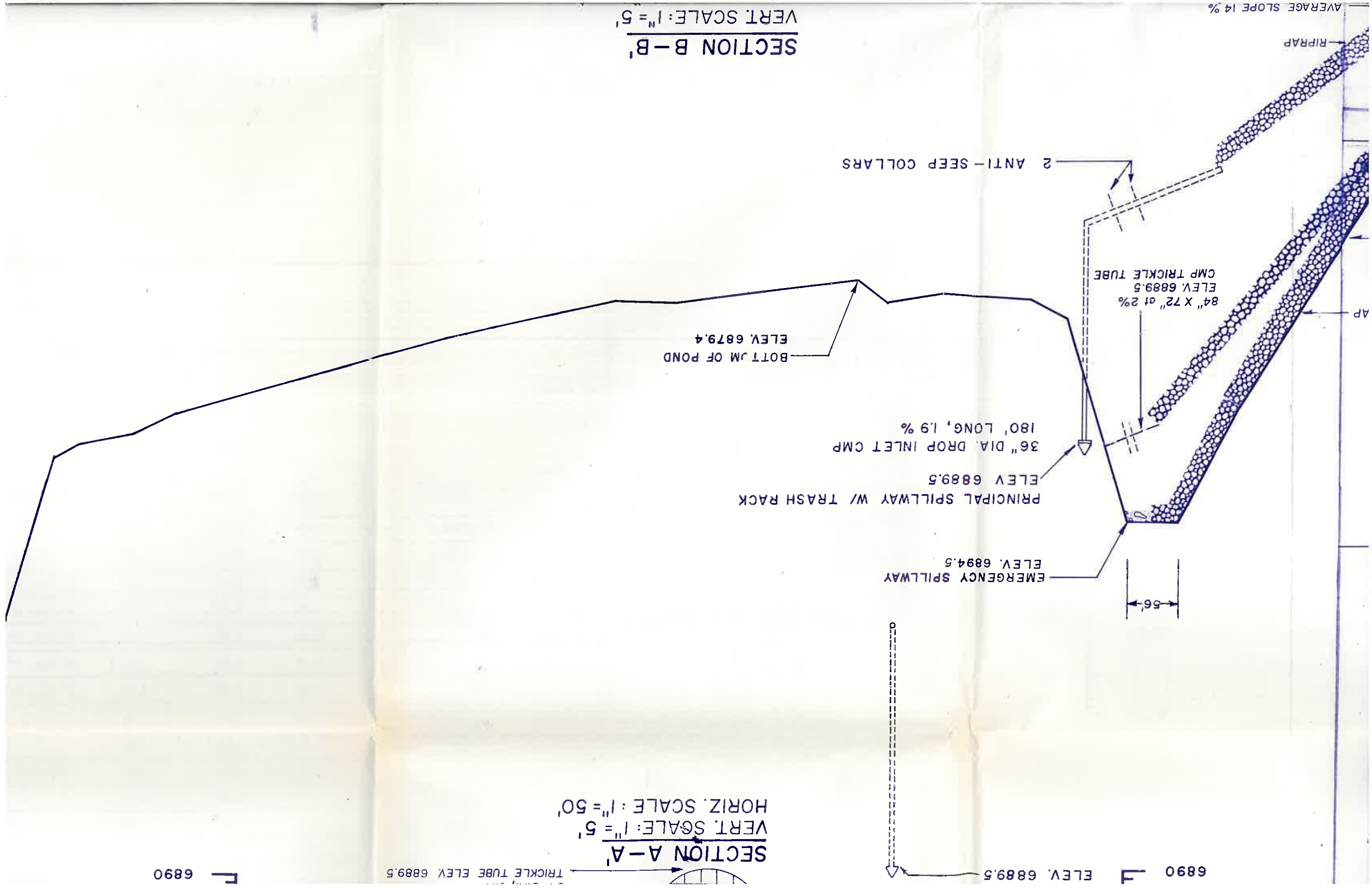
84" X 72" at 2%
CMP TRICKLE TUBE
ELEV. 6889.5

2 ANTI-SEEP COLLARS

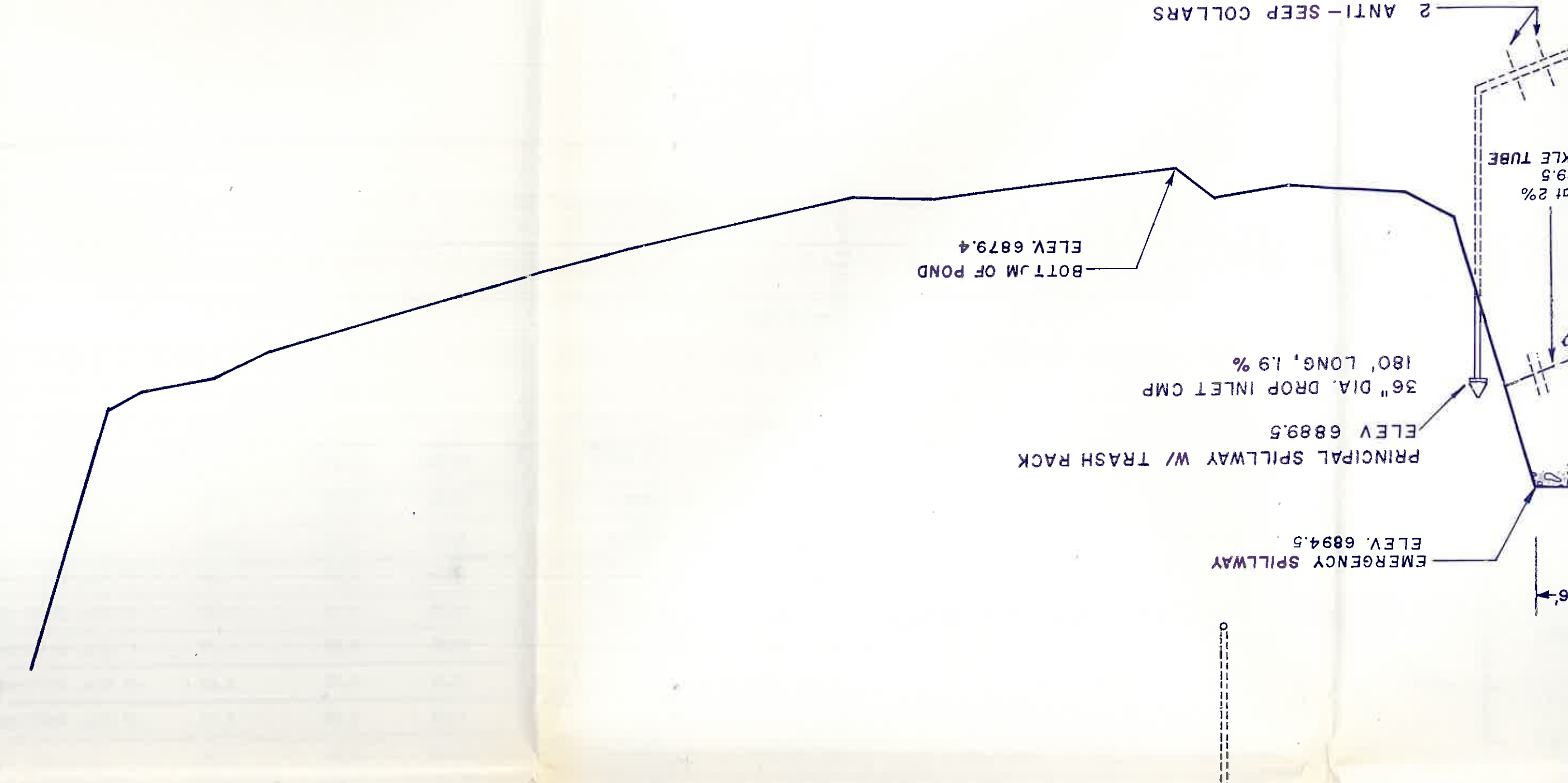
RIPRAP

AVERAGE SLOPE 14%

SECTION B-B'
VERT. SCALE: 1" = 5'



6905
6900
6895
6890
6885
6880
6875
6870
6865



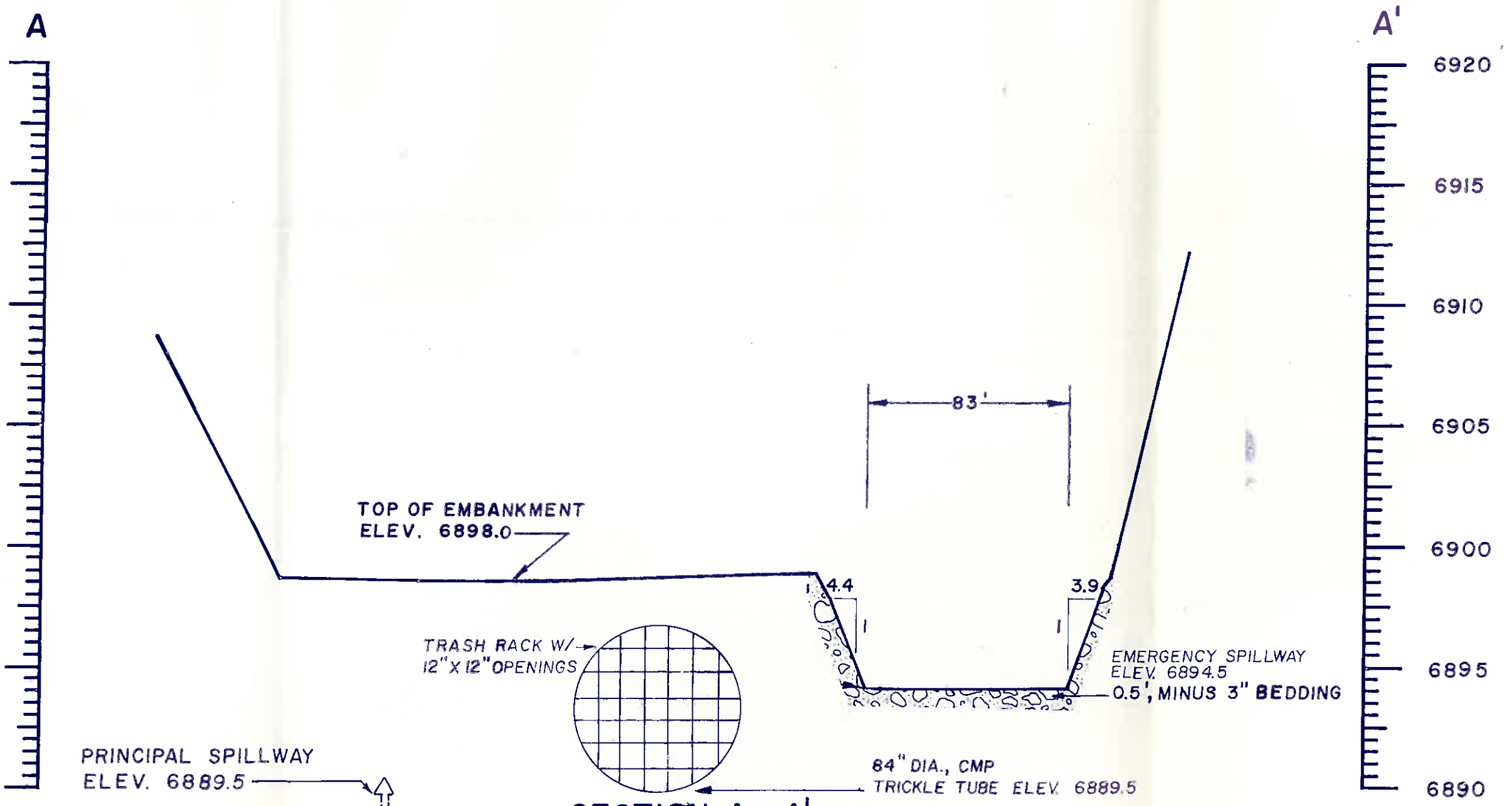
SECTION B-B'
VERT. SCALE: 1" = 5'

SECTION A-A'
VERT. SCALE: 1" = 5'
HORIZ. SCALE: 1" = 50'

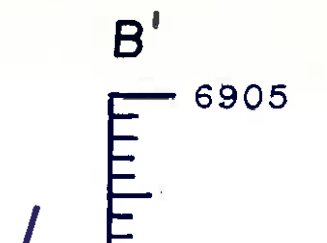
6890

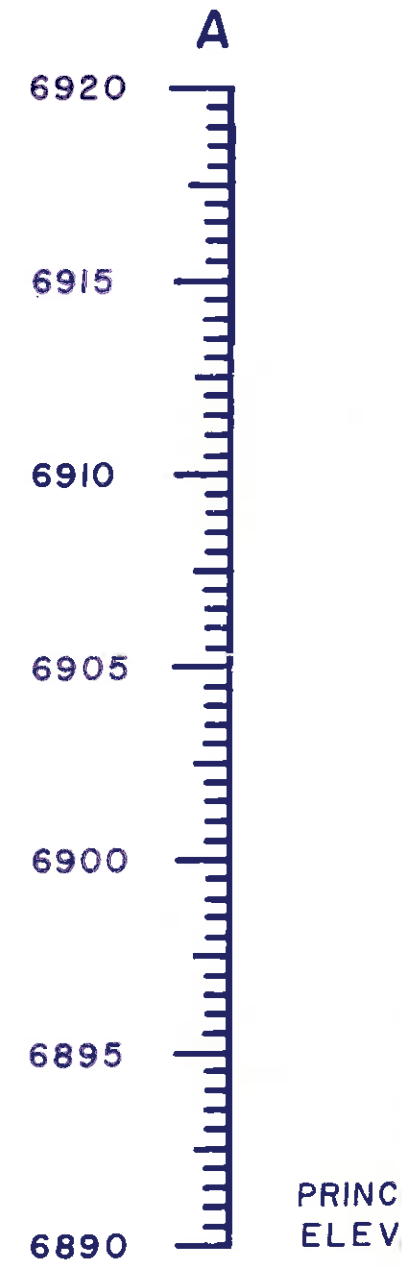
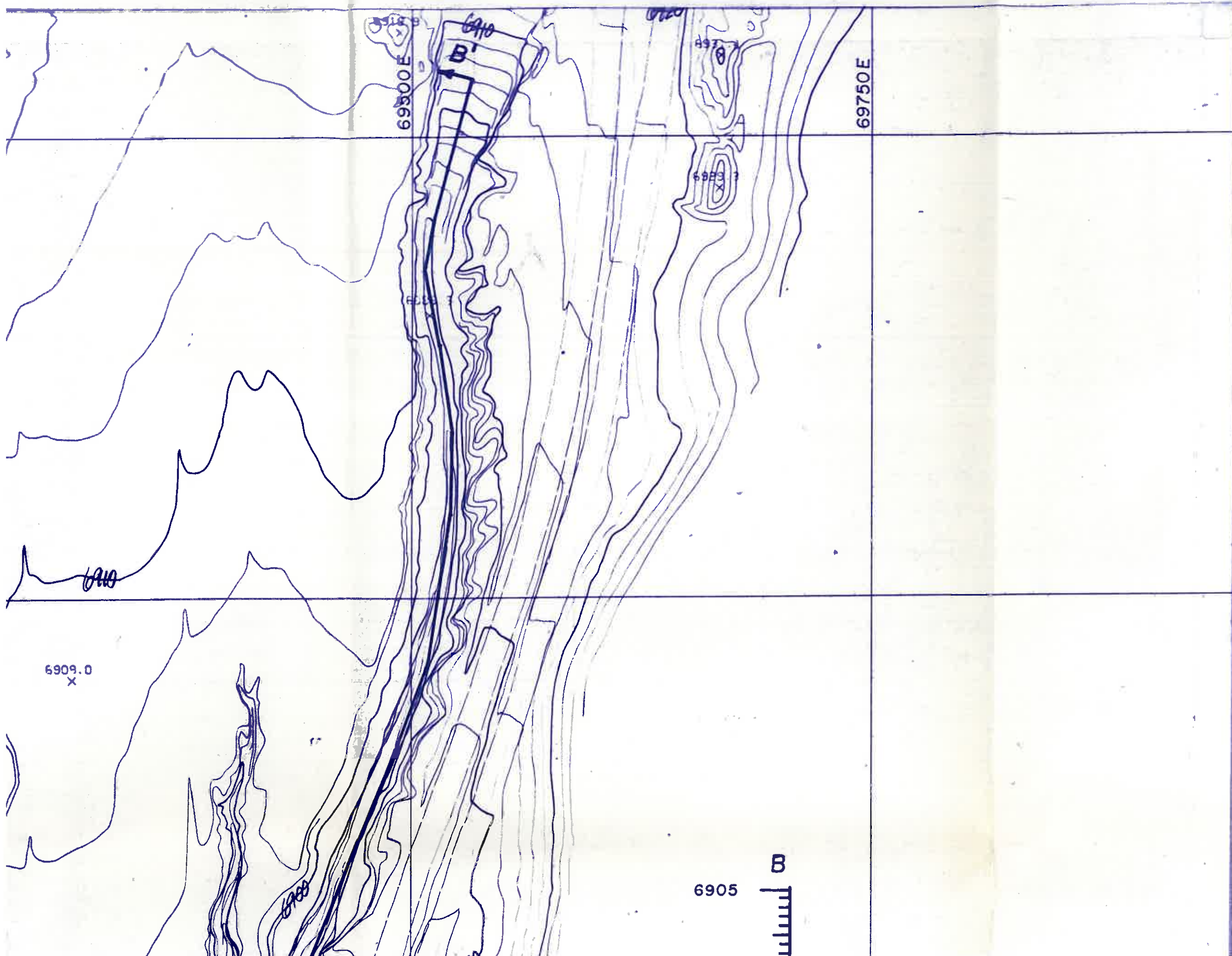
TRICKLE TUBE ELEV. 6889.5

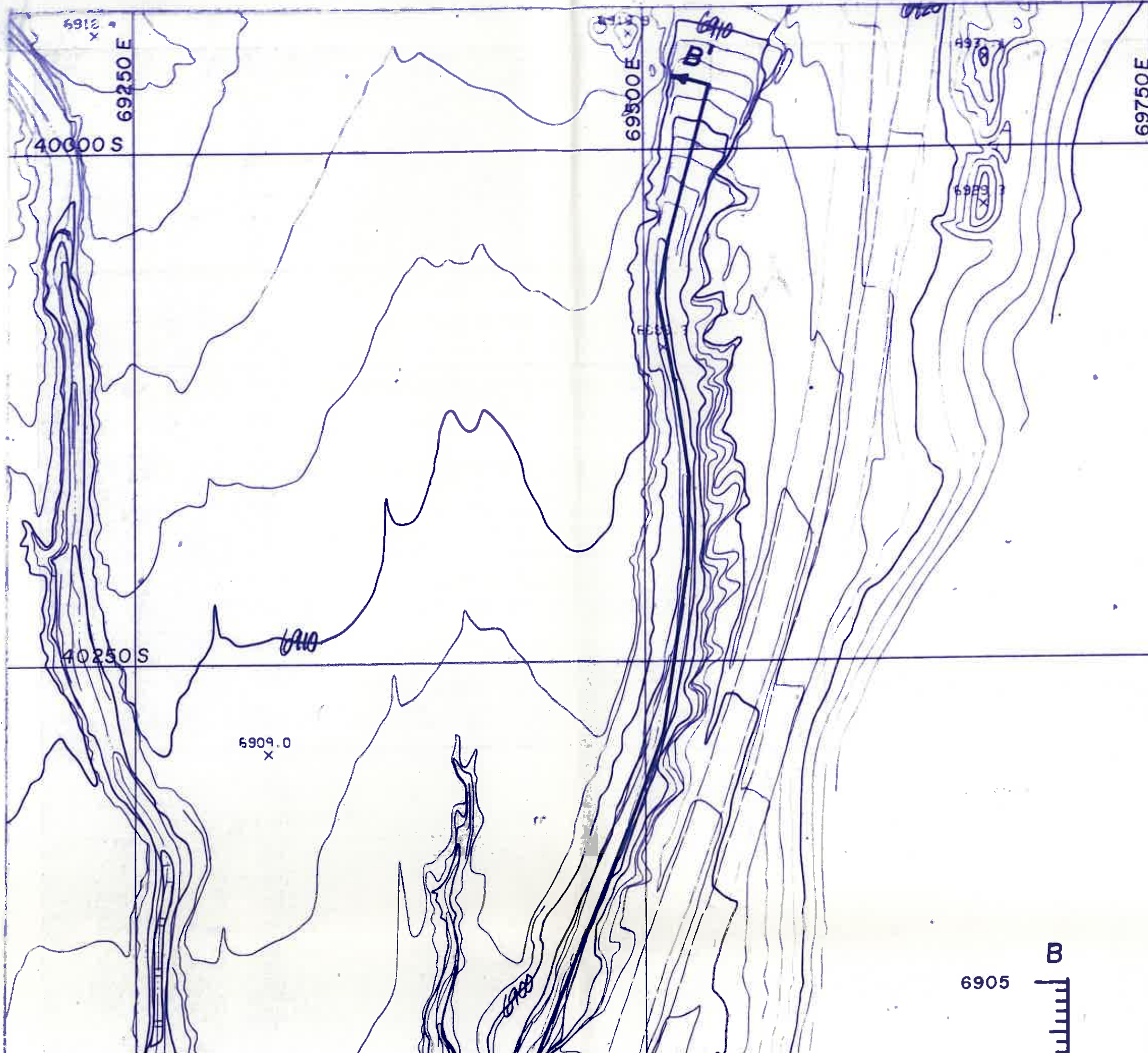
ELEV. 6889.5



SECTION A-A'
 VERT. SCALE: 1" = 5'
 HORIZ. SCALE: 1" = 50'







6905
m