

INSPECTION REPORT
Sedimentation Structure
J16-F
Kayenta Mine
Navajo County, Arizona
for
PEABODY COAL COMPANY



Dames & Moore
10139-011-22

TABLE OF CONTENTS

	<u>Page</u>
INTRODUCTION	1
INSPECTION	1
SITE DESCRIPTION	2
LAND USE	2
EMBANKMENT	2
ANALYSES	3
STABILITY	3
HYDROLOGY	3
HYDRAULICS	4
Spillway Channel	6
Outflow Channel	6
STORAGE CAPACITY	6
REMEDIAL COMPLIANCE PLAN	7
GEOTECHNICS	7
HYDRAULICS	8
APPENDIX A - INSPECTION CHECK LIST	
APPENDIX B - HYDROLOGY AND HYDRAULIC CALCULATIONS	

INTRODUCTION

Sedimentation Structure J16-F is an earthen embankment, designed and constructed in 1982 by Peabody Coal Company as a temporary sedimentation structure to control runoff and sediment from the disturbed mining areas of the Kayenta Mine. The location of Structure J16-F is shown on Plate 1, Site Plan.

This inspection report contains information specific to Structure J16-F. Regional site information is presented in the "General Report, Kayenta and Black Mesa Mines, Navajo County, Arizona for Peabody Coal Company," along with the methods and results of analyses used for slope stability, hydrology and hydraulics.

INSPECTION

Structure J16-F was inspected on September 10, 1985 by an interdisciplinary team of engineers from Dames & Moore. The purpose of the inspection was to assess the safety and general condition of the structure with respect to United States Department of Interior, Office of Surface Mining (OSM) regulations.

Dames & Moore's inspection was performed in accordance with applicable 30 CFR 780 and 816 regulations and included a review of the J16-F project files and a field inspection of the structure. The most current information contained in the Peabody Coal Company files includes the 1984 and current survey data and inspections performed in 1984 and 1985 by

Peabody Coal Company. The survey data developed in August 1984 was used in the analyses of the structure. Results of the field inspection are included in this report as Appendix A.

SITE DESCRIPTION

LAND USE

Structure J16-F has a 19.2-acre tributary drainage area and is located near Moenkopi Wash at the Kayenta Mine. The watershed is classified as 60% disturbed and 40% Sagebrush.

EMBANKMENT

Structure J16-F is a homogeneous earthen embankment classified as a sidehill embankment. Physical characteristics of the embankment are listed in the following table:

Structure J16-F

Embankment	Residual Shale Soils/Alluvium
Foundation	Residual Shale Soils/Alluvium
Right Abutment	Residual Shale Soils
Left Abutment	Residual Shale Soils
Height	16.9 ft
Crest Width	14 ft
Upstream Slope	2.1 H : 1 V
Downstream Slope	2.9 H : 1 V

A cross-section of the embankment is shown on Plate 2, Existing Maximum Cross Section J16-F, A-A'. Grass provides erosion protection on the downstream slope of the embankment.

ANALYSES

STABILITY

Structure J16-F is a category B-1 embankment. A standard category B-1 embankment has static and seismic factors of safety equal to or greater than 1.5 and 1.2, respectively, under the following conditions:

1. Maximum height = 20 ft
2. Maximum upstream slope = 2.0 H : 1 V
3. Maximum downstream slope = 2.5 H : 1 V
4. Normal pool with steady seepage saturation conditions

The J16-F embankment is lower in height and has flatter slopes than the category standard; therefore, the embankment has factors of safety greater than the design minimum.

HYDROLOGY

The hydrologic analysis was completed using the U.S. Army Corps of Engineers generalized computer program HEC-1, Flood Hydrograph Package. Structure J16-F is not in series with any other structure and therefore the spillway was analyzed using the 25-year, 6-hour storm. The storage capacity of Structure J16-F was analyzed using the 10-year, 24-hour storm.

The following parameters were used in the hydrologic analysis:

1. Water Course length, L	0.189	mi
2. Elevation Difference, H	98	ft
3. Time of Concentration, T	0.065	h
4. Lag time, $0.6T_c$	0.039	h
5. SCS Curve Number	91	
6. Rainfall Depth, 10-year, 24-hour storm .	2.1	in.
25-year, 6-hour storm. .	1.9	in.
7. Drainage Area	19.2	acres

HYDRAULICS

The HEC-1 program was used to evaluate inflow to the sedimentation structure, outflow from the structure and the resulting water surface elevations. The initial conditions and results of the analysis are summarized in the following table.

J16-F HYDRAULICS

	Units	10-year 24-hour Storm	25-year 6-hour Storm
<hr/>			
Initial Reservoir Volume			
Condition		Empty	Full to the spillway elevation
Inflow			
Peak Flow	cfs	51	64
Volume	acre-ft	2.04	1.71
Storage			
Peak Stage	ft	6582.41	--
Spillway Elevation . .	ft	6591.41	--
Peak Storage	acre-ft	2.04	--
Storage Capacity . . .	acre-ft	9.34	--
Outflow			
Peak Flow	cfs	0	8
Embankment Crest			
Elevation	ft	--	6594.50
Peak Stage	ft	--	6592.92
Freeboard	ft	--	1.58
Spillway Channel			
Flow Depth	ft	--	1.02
Critical Velocity. . .	fps	--	2.3
Manning's "n"		--	0.040
Outflow Channel			
Slope	%	--	33
Normal Velocity. . . .	fps	--	4.3
Normal Depth	ft	--	0.09
Manning's "n"		--	0.040

Spillway Channel

The existing spillway for J16-F has a trapezoidal channel with the following dimensions:

Channel depth	3.8 ft
Channel width	22 ft
Channel length	22 ft
Side slopes (horizontal to vertical). .	2:1
Average exit slope	0 percent

There is presently no erosion protection within the channel.

Outflow Channel

The existing outflow channel for J16-F has a trapezoidal channel with the following dimensions:

Channel width	21 ft
Channel length	75 ft
Side slopes (horizontal to vertical). .	2:1
Average exit slope	10.5 percent

Rock provides no erosion protection within the channel.

STORAGE CAPACITY

The impoundment volume-elevation curve is based on site specific surveys conducted for Peabody Coal Company's August 1984 inspection, and 1985 resurveys, where available. Additionally, the most current topographic maps available were used in developing Plate 3, Volume-Elevation Curve, J16-F.

The calculations for the sediment load entering Structure J16-F were made utilizing the Universal Soil Loss Equation with the following parameters:

1. Rainfall Factor, R 40
2. Soil Erodibility Factor, K 0.22
3. Slope Factor, LS 2.87
4. Cover Factor, C 0.744
5. Erosion Control Factor, P 1.0

The hydrologic analysis gives the storage volume required to contain the 10-year, 24-hour storm, and the remaining storage volume available for storing sediment. The existing storage capacity of J16-F and the results of the sediment inflow analysis are summarized in the following table.

J16-F STORAGE

Total Storage Capacity	9.34	acre-ft
10-year, 24-hour Storm Inflow	2.04	acre-ft
Available Sediment Storage Capacity	7.3	acre-ft
Sediment Inflow Rate	0.167	acre-ft/yr
Sediment Storage Life	44	yrs

REMEDIAL COMPLIANCE PLAN

GEOTECHNICS

The inspection of Structure J16-F indicated that the only geotechnical problem is rill and gully erosion on the upstream and downstream slopes, the side slopes of the spillway channel and the left abutment. Correction of erosion is considered a periodic maintenance task and does not require remedial action. The crest and upstream slope of the

embankment are uneven and should be trimmed level and smooth, respectively, to prevent masking of future potential problems.

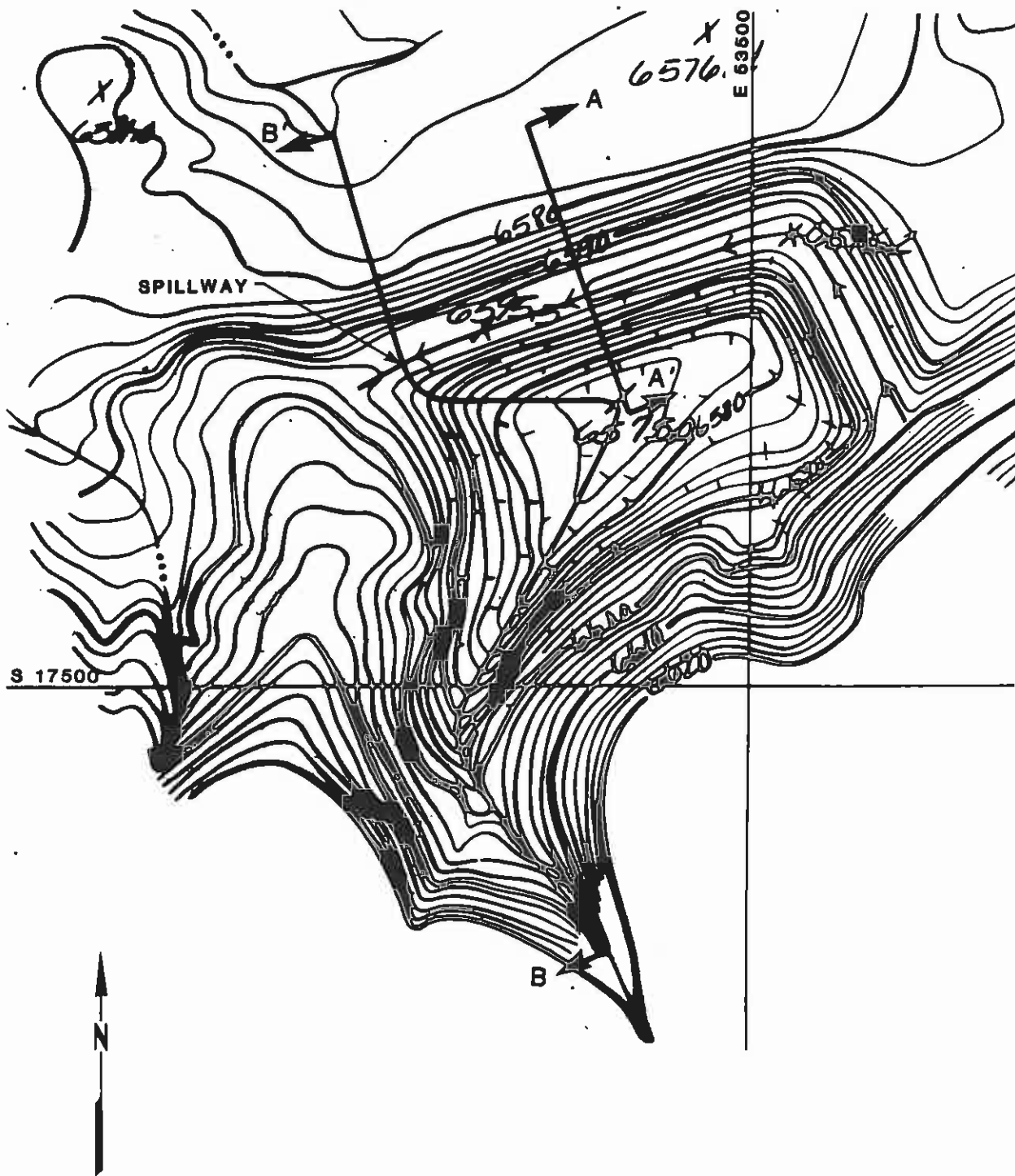
HYDRAULICS

The storage capacity and spillway capacity of Structure J16-F are adequate. The outflow channel is protected with riprap but the spillway channel is not. The spillway channel should be protected against erosion using geotextile and riprap as shown in Plate 5. Plate 4 shows the existing spillway and outflow channel profile and Plate 5 shows the channel dimensions.

* * *

The following plates and appendix are attached and complete this inspection report.

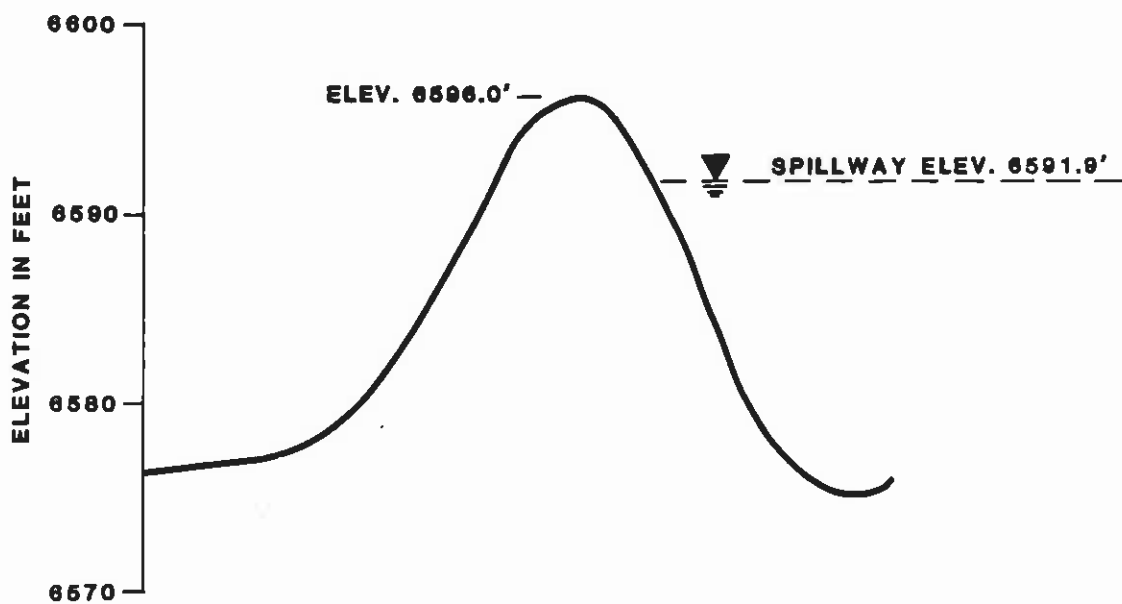
- Plate 1 - Site Plan J16-F
- Plate 2 - Existing Maximum Cross Section J16-F, A-A'
- Plate 3 - Volume-Elevation Curve J16-F
- Plate 4 - Channel Profile J16-F, B-B'
- Plate 5 - Spillway and Outflow Channel Cross Section J16-F
- Appendix A - Inspection Check List
- Appendix B - Hydrology and Hydraulic Calculations



**SITE PLAN
J16-F**

BY **Dames & Moore**

Plate 1

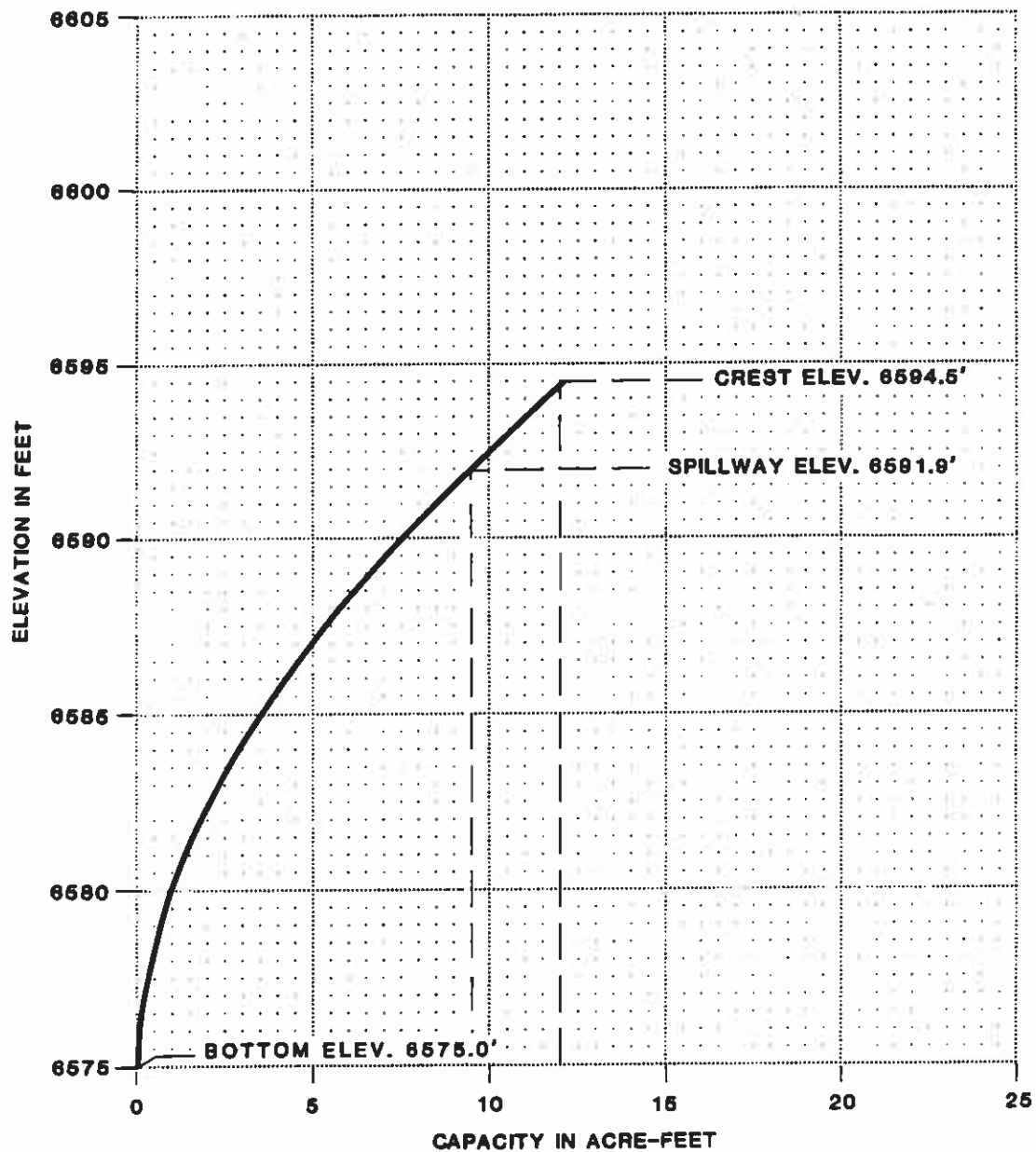


EXISTING
MAXIMUM CROSS-SECTION
A-A'
J16-F

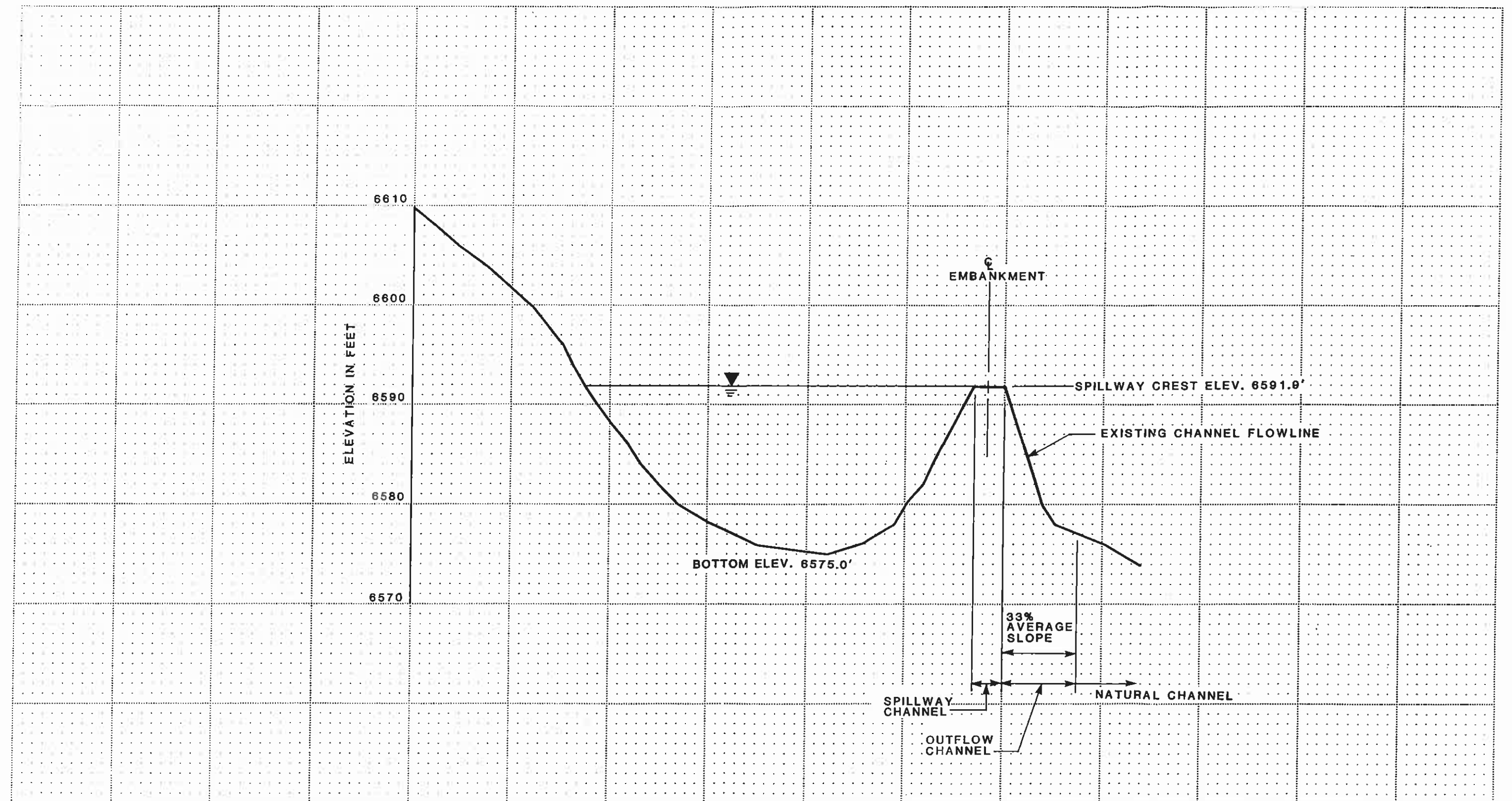
FOR LOCATION SEE PLATE 1

BY **Dames & Moore**

Plate 2



VOLUME-ELEVATION
CURVE
J16-F



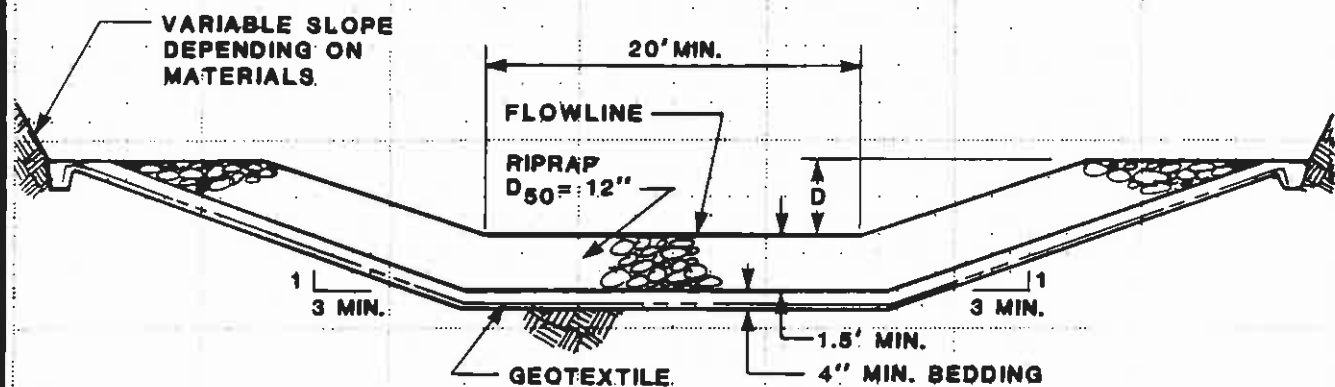
SCALE
0 100 200
FEET

CHANNEL PROFILE B-B'
J16-F

FOR LOCATION SEE PLATE 1

BY **Dames & Moore**

Plate 4



SPILLWAY CHANNEL

$D = 2.1'$

LENGTH = 30'

FLOWLINE ELEV. = 6591.80'

OUTFLOW CHANNEL

$D = 1'$

SPILLWAY AND
OUTFLOW CHANNEL
CROSS SECTION
J16-F

APPENDIX A
INSPECTION CHECK LIST

INSPECTION CHECK LIST

ITEM	YES	NO	REMARKS
1. CREST			uneven crest / not trimmed 14' w
a. Any visual settlements?		X	
b. Misalignment?		X	
c. Cracking?		X	
2. UPSTREAM SLOPE			uneven / not trimmed 26°
a. Adequate grass cover?		X	
b. Any erosion?	X		gullies & rills
c. Are trees growing on slope?		X	
d. Longitudinal cracks?		X	
e. Transverse cracks?		X	
f. Adequate riprap protection?		X	
g. Any stone deterioration?			NA
h. Visual depressions or bulges?		X	
i. Visual settlements?		X	
j. Animal burrows?		X	
3. DOWNSTREAM SLOPE			19°
a. Adequate grass cover?	X		
b. Any erosion?	X		rills
c. Are trees growing on slope?		X	
d. Longitudinal cracks?		X	
e. Transverse cracks?		X	
f. Visual depressions or bulges?		X	
g. Visual settlements?		X	
h. Is the toe drain dry?			NA
i. Are the relief wells flowing?			NA
j. Are boils present at the toe?		X	
k. Is seepage present?		X	
l. Animal burrows?		X	
4. ABUTMENT CONTACT. RIGHT			
a. Any erosion?		X	
b. Visual differential movement?		X	
c. Any cracks noted?		X	
d. Is seepage present?		X	
e. Type of Material?			gray / black SM / rock
5. ABUTMENT CONTACT. LEFT			
a. Any erosion?	X		Rills into spillway
b. Visual differential movement?		X	
c. Any cracks noted?		X	
d. Is seepage present?		X	
e. Type of Material?			brown SM

ITEM	YES	NO	REMARKS
6. SPILLWAY/NORMAL			
a. Location:			
Left abutment?	X		
Right abutment?			
Crest of Embankments?			
b. Approach Channel:		X	
Are side slopes eroding?			
Are side slopes sloughing?			
Bottom of channel eroding?			NA
Obstructed?			
Erosion protection?			
c. Spillway Channel:	X		22' W 22' L 0% slope 3B below crest
Are side slopes eroding?	X		Rolls from LA
Are side slopes sloughing?		X	
Bottom of channel eroding?		X	
Obstructed?		X	
Erosion protection?		X	
d. Outflow Channel:	X		6° slope 21' W L = 75'
Are side slopes eroding?		X	
Are side slopes sloughing?		X	
Bottom of channel eroding?		X	
Obstructed?		X	
Erosion protection?	X		OSD - 15°
e. Weir:		X	
Condition?			
7. SPILLWAY/EMERGENCY			
a. Location:			NA
Left abutment?			
Right abutment?			
Crest of Embankments?			
b. Approach Channel:			
Are side slopes eroding?			
Are side slopes sloughing?			
Bottom of channel eroding?			
Obstructed?			
Erosion protection?			
c. Spillway Channel:			
Are side slopes eroding?			
Are side slopes sloughing?			
Bottom of channel eroding?			
Obstructed?			
Erosion protection?			
d. Outflow Channel:			
Are side slopes eroding?			
Are side slopes sloughing?			
Bottom of channel eroding?			
Obstructed?			
Erosion protection?			
e. Weir:			
Condition?			

APPENDIX B
HYDROLOGY AND HYDRAULIC CALCULATIONS

TIME OF CONCENTRATION

ELEVATION DIFFERENCE = 690 - 692 = 98 ft.

WATER COURSE LENGTH = 2.5 in = 1000 ft. = 0.189 mi.

$$T_c = \left(\frac{11.9 (0.189)^3}{98} \right)^{0.365} = 0.065 \text{ hr.} \quad \checkmark$$

$$\text{LAG TIME} = 2.6 T_c = 0.039 \text{ hr.} \quad \checkmark$$

SCS CURVE NUMBER

DRAINAGE AREA (ac)	COVER TYPE	HYDROLOGIC CONDITION	SOIL TYPE	WEIGHTED CURVE NUMBER
7.6	S-G	poor	D	85 (40)
11.6	disturbed	—	D	94 (60)
				<u>90.4</u> ✓

100% EH #22

use 91

DRAINAGE BASIN AREA

19.2 ACRES 0.030 SQ MILE ✓

REVISIONS

BY _____ DATE _____ TO EO _____
 BY _____ DATE _____ TO EO _____

BY S. D. L. W. DATE 10-2-85
 CHECKED BY BHM 10/24/85
 COPY TO EO _____

UNIVERSAL SOIL LOSS EQUATION

RAINFALL FACTOR

$$R = 40$$

SOIL ERODIBILITY FACTOR

$$\text{SOIL TYPE} = 100\% \text{ EH \#22} = .22$$

$$K = \underline{\underline{.22}}$$

SLOPE FACTOR

<u>LENGTH (ft.)</u>	<u>Δ ELEV (ft.)</u>	<u>SLOPE (%)</u>	<u>LS</u>
450	20	5%	1.07 (.7)
300	60	20%	7.07 (.3)
			<u><u>= 2.87</u></u>

COVER FACTOR

<u>AREA (ac.)</u>	<u>COVER TYPE</u>	<u>% COVER</u>	<u>CANOPY (%)</u>	<u>WEIGHTED C</u>
40%	S-G	10	25	.40 (.36)
60%	disturbed	—	—	.60 (1.0)
				<u><u>C = .744</u></u>

EROSION CONTROL FACTOR

$$P = 1.0$$

SEDIMENT INFLOW

$$A = 40 (.22) (2.87) (.744) (1.0) = 18.79 \text{ ton/acre/year}$$

$$A = (18.79) \left(\frac{1}{2047} \right) (19.2) (.95) = 0.167 \text{ acre-feet/year}$$

Dames & Moore

REVISIONS

BY DATE TO EO
 BY DATE TO EO

DATE

BY DATE 10/27/85
 CHECKED BY GHM
 COPY TO EO